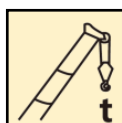


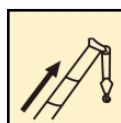
# 全地面起重机 / All Terrain Crane



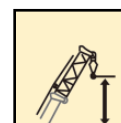
## XCA100\_E



100 t



60 m



88 m

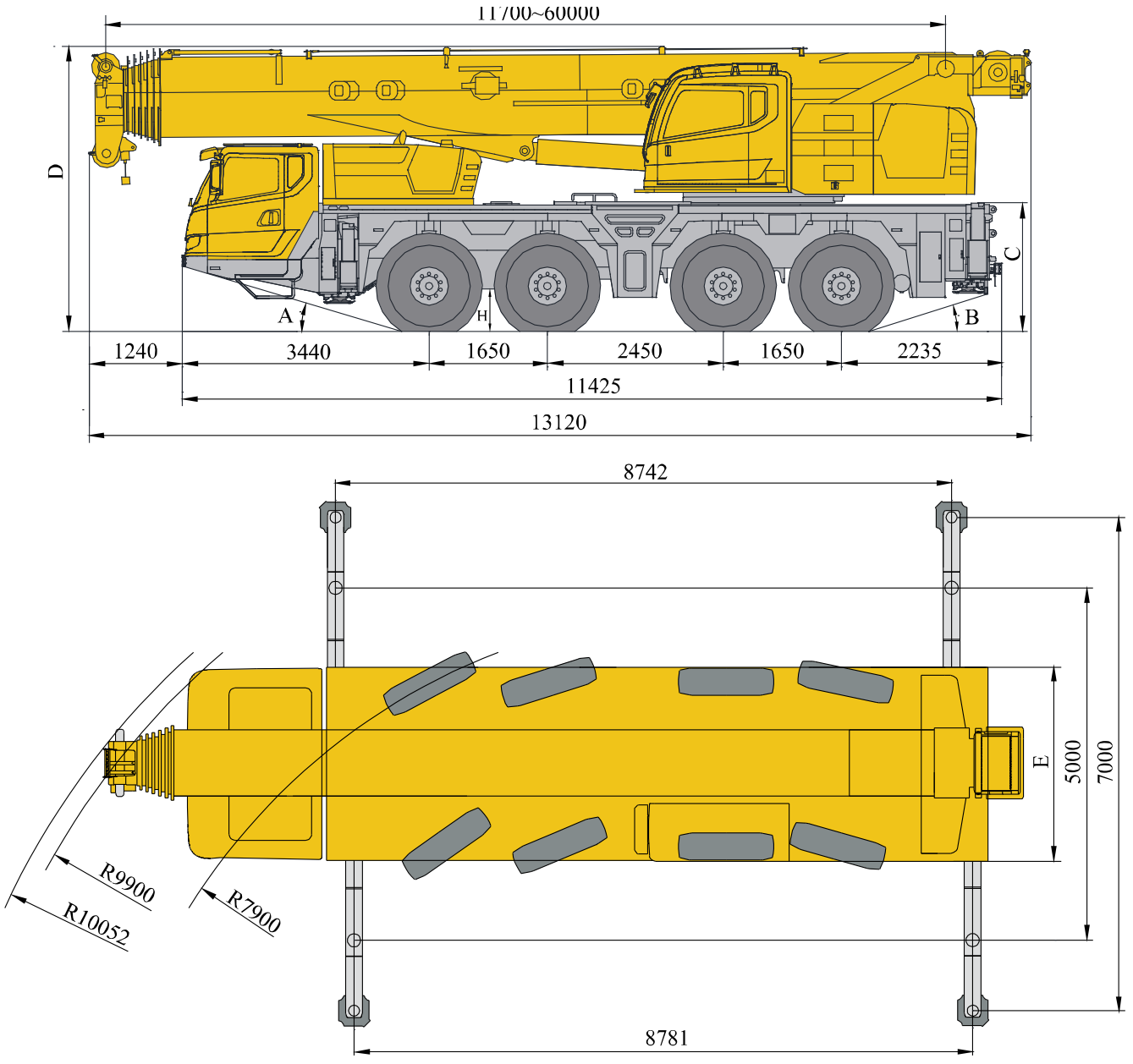



# 目录

## Content

<b>目录</b>	
<b>Content</b>	
尺寸参数	3
Dimensions	
技术规格	4-7
Product Specifications	
重量/作业速度	8
Weight / Working speeds	
平衡重	9
Counterweight	
臂架组合方案	10-11
Boom / Jib combinations	
主臂	12-24
Boom	
主臂+副臂	25-29
Boom + Jib	
主臂+独立臂头	30-36
Boom + Independent jib head	
符号标识	37
Description of symbols	
注意事项	38
Notes	

# 尺寸参数 Dimensions



	A	B	C	D	E	H
385/95 R 25 ( 14.00 R 25 )	17°	16.5°	1800mm	4000mm	2750mm	330mm
445/95 R 25 ( 16.00 R 25 )	17°	16.5°	1800mm	4050mm	2750mm	380mm

# 技术规格

## Technical specifications



### Chassis

<b>Frame</b>	Designed and manufactured by XCMG. It is made of imported high strength steel and has anti-torsion box structure.
<b>Outrigger</b>	4 outriggers, H-shaped arrangement, lateral and vertical outrigger controlled by the hydraulic. Both sides of the chassis equipped with electronic control console, luminous level gauge, lamp and accelerator buttons. Fully retracted, half-extended and fully extended positions and push-pull outrigger floats are available. Out-rigger pressure detection and protective system contributes to improved operation safety.
<b>Engine</b>	OM471LA, in-line six-cylinder water-cooled EFI diesel engine, manufactured by Daimler, rated power 340kw / 1700 rpm, max. torque 2200N.m / 1300 rpm, Stage IV / Tier4F emission standards. Fuel tank capacity : 300L.
<b>Hydraulic system</b>	Load sensitive proportional control system. The hydraulic pump is connected to the engine through PTO for controlling the movements of outriggers and suspensions.
<b>Gearbox</b>	Germany ZF electronic control mechanical transmission, with 12-forward speed, 2-reverse speed. Automatic or manual operations of transmission is selectable.
<b>Transference</b>	Mechanical transfer box is originally imported from KESSLER Germany, equipped with an emergency steering oil pump, which is used to supply steering power while the vehicle is towed after losing power.
<b>Axles</b>	Germany KESSLER high strength axles, excellent comprehensive performance, equipped with pneumatically controlled drum brake
<b>Suspension</b>	Hydro-pneumatic suspension is adopted for all axles, providing good shock absorbing effect. Functions of automatic leveling, suspension lifting, elastic/rigid state switch-over, etc. are available. The stroke of suspension cylinder : -150mm ~ +150mm.
<b>Tires</b>	8 tires, each axle is equipped with single tire, manufactured by Michelin, large bearing capacity. Tire specifications: 445/95R25(14.00R25).

<b>Brakes</b>	Service brake: double-circuit air pressure brake, acting on all wheels. Parking brake: spring energy brake, acting on wheels of 1, 3, 4 axles. Auxiliary brake: engine brake, transmission retarded brake.
<b>Steering</b>	All axles steering, advanced electro-hydraulic proportional steering control is suitable for various demands of working conditions, some steering modes followed may be realized.
<b>Driver's cab</b>	New type steel structure full dimension cab with suspension connecting structure, and there is shock absorb fitted at the rear of the cab, equipped with adjustable seats, safety glass of electrically operated door window lift, electric-adjustable mirrors, steering wheel adjustable in height and angle, reverse displayer, large screen liquid crystal display. Combined control panel reasonably arranged ergonomically designed concept. Heater and air conditioner are standard.
<b>Electrical System</b>	DC 24 volts is in series with two 12-volt battery packs.



### Superstructure

<b>Frame</b>	Designed and manufactured by XCMG, made of high-strength steel.
<b>Superstructure engine</b>	OM934LA, in-line four-cylinder water-cooled EFI diesel engine, manufactured by Benz, rated power 129kw / 2200 rpm, max. torque 750N.m / 1200 ~ 1600 rpm, Stage IV / Tier4F emission standards. Fuel tank capacity : 300L.
<b>Hydraulic system</b>	Load sensitive piston pump driven by superstructure engine, used for hoisting, elevating, telescoping and slewing operation. Imported electro-hydraulic direction valve, matching perfectly stably. Large power Air-cooled hydraulic oil cooler, which may effectively reduce the temperature of oil in the system.
<b>Operating mode</b>	Variable continuous speed regulation. Electric proportional pilot control of all operation of hydraulic pump and proportional valve to control the crane by 2 control handle.
<b>Main winch system</b>	Hydraulic controlled speed regulation, with groove drum equipped, driven by hydraulic variable motor through planetary gear reducer, and with built-in constant closed brake, equipped with imported wire rope and pouch socket.

## 技术规格

### Technical specifications

<b>Slewing system</b>	Single-row ball external tooth slewing ring and driven by a hydraulic motor, with a planetary gear reducer and a normally closed brake equipped, for 360° continuous rotation. Power control and free slewing function as well as stepless speed regulation are available.
<b>Operator's cab</b>	The cab is ergonomically designed for safety and comfort. It has an swing-out door, a adjustable seat and equipped with safety glass and top protective rails. The cab can be tilted up to 20°. Heating & air conditioner are available.
<b>Safety devices</b>	Hydraulic balance valve, Hydraulic relief valve, LMI. Spring centering system for control levers. Lowering limiter for preventing wire rope from over-releasing. Anti-two block at boom head for preventing wire rope from over-winding. Anemometer for measuring the wind velocity.
<b>LMI</b>	The safety protection device is installed in operator's cab. When actual moment approaches overload value, it may send out visual alarm, and automatically stop dangerous movements before overloading. Overload memory function (black box) and fault self-diagnosis function are available.
<b>Combined counterweight</b>	Total weight is 28.7t. 5 counterweight combinations of 0t, 11.8t, 18.7t, 26.7t, and 28.7t are available.
<b>Electrical System</b>	DC 24 volts is in series with two 12-volt battery packs.



### Boom system

<b>Boom</b>	7-section, U-shape cross section, welding structure. Single-cylinder pinning interlocked telescoping system, 46%, 92% and 100% telescoping pattern are available. Boom length: 11.7m ~ 60m.
<b>Fixed jib</b>	Lattice welding structure, with 0°, 15° and 30° jib offset angles available. Jib length: 10.6m, 18.1m.

### Additional equipment

<b>Auxiliary winch system</b>	Hydraulic controlled speed regulation, with groove drum equipped, driven by hydraulic variable motor through planetary gear reducer, and with built-in constant closed brake, equipped with imported wire rope and pouch socket.
<b>Fixed jib</b>	Two insets each 7 m, and a device for continuous luffing of jib
<b>Independent jib head</b>	2.9 m, may be installed on the tip of boom for lifting operations.
<b>Superstructure engine</b>	OM924LA, in-line four-cylinder water-cooled EFI diesel engine, manufactured by Benz, rated power 145kw / 2200 rpm, max. torque 705N.m / 1200 ~ 1600 rpm, China national III emission standards. Fuel tank capacity : 300L.
<b>Chassis engine</b>	OM460LA, in-line six-cylinder water-cooled EFI diesel engine, manufactured by Daimler, rated power 360kw / 1800 rpm, max. torque 2200N.m / 1300 rpm, Stage IIIA , Stage IIIB / Tier3 emission standards. Fuel tank capacity : 300L.
<b>Tires</b>	8 tires, each axle is equipped with single tire, manufactured by Michelin, large bearing capacity. Tire specifications: 445/95R25(16.00R25).

**Product parts details** As mentioned above, please refer to the product quotation for specific parts.

## 重量 Weight






车桥 Axle	1	2	3	4	总重量 Total weight
t	12	12	12	12	48








吊钩 Hook	倍率 No. of lines	吊钩重量 Weight kg	备注 Remarks
75 t	12	730	单钩 Single hook
20 t	3	270	单钩 Single hook

## 作业速度 Working speeds



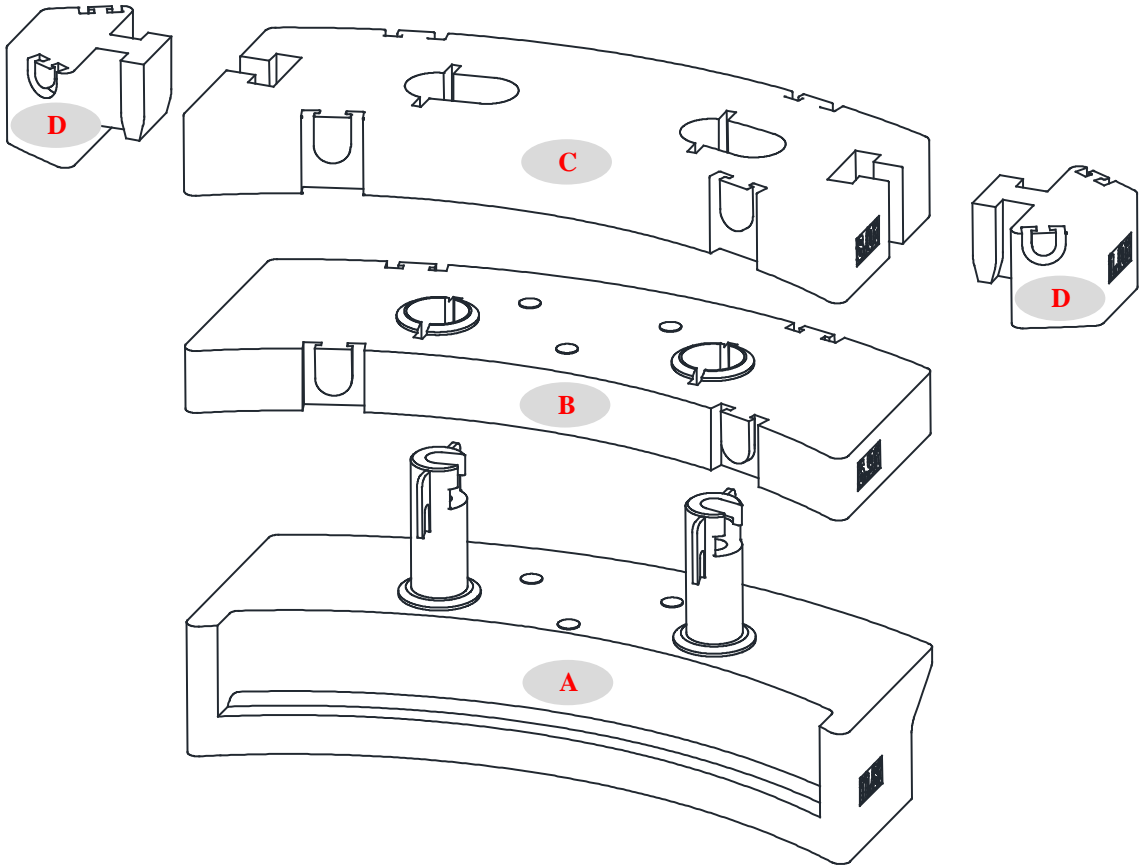
		
385/95 R 25 ( 14.00 R 25 )	2~80	60%
445/95 R 25 ( 16.00 R 25 )	2.2~85	55%



作业机构 Drive	作业速度 Working speed	最大单绳拉力 Max. single line pull	钢丝绳直径/长度 Rope diameter/ length
	0-125 m/min, 单绳, 第4层, 空载 m/min, single line, 4th layer, no load	6.6 t	18 mm/290 m
	0-110 m/min, 单绳, 第5层, 空载 m/min, single line, 5th layer, no load	6.6 t	18 mm/200 m
	0-1.7 r/min		
	从-0.5°抬起至83°约50s Approx. 50s for boom elevation from -0.5° to 83°		
	从11.7m伸出至60m约550s Approx. 550s for boom extension from 11.7m to 60m		



**平衡重**  
**Counterweight**

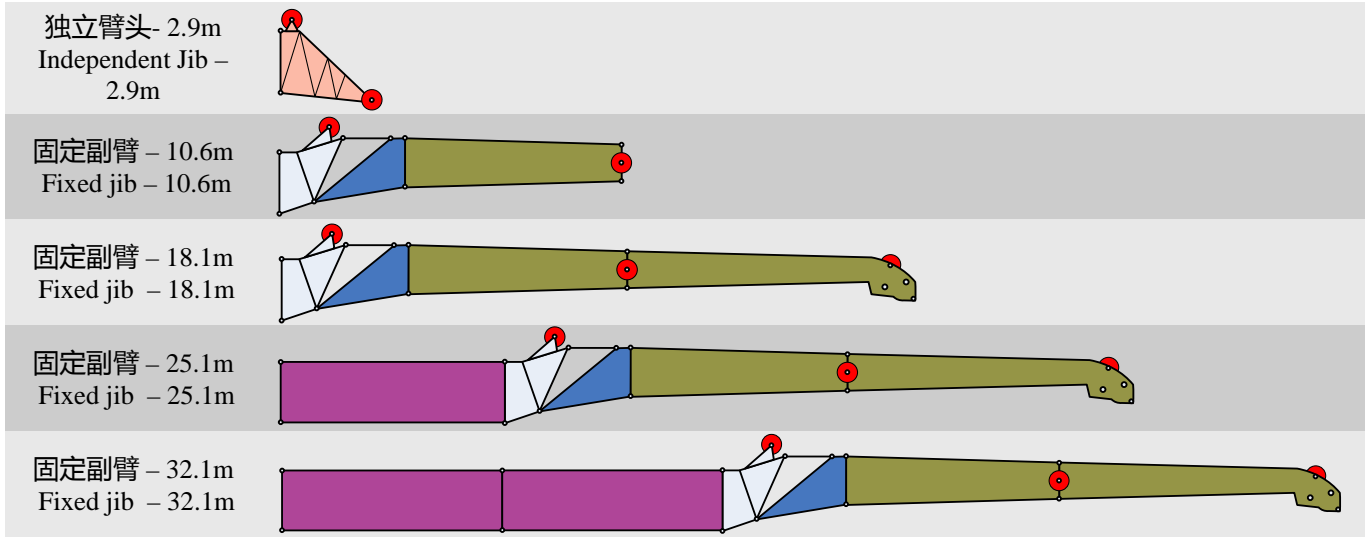


平衡重 Counterweight	A	B	C	D
尺寸 (长×宽×高) m Size (L×W×H) m	3.3×1.4×1.344	3.3×1.4×0.348	3.3×1.4×0.39	0.793×0.665×0.48
重量 t Weight t	11.8	6.9	8	1

工况模式 Working mode	28.7t	26.7 t	18.7 t	11.8t
组合形式 Combinations	A+B+C+D×2	A+B+C	A+B	A

# 臂架组合方案

## Boom / Jib combinations



部件 Component	结构形式 Structure	尺寸 (长×宽×高) m Size (L×W×H) m	重量 kg Weight kg
连接架 Connection bracket		2.075×0.945×1.553	300
旋转架 Swinging bracket		2.86×0.724×1.31	260
一节副臂总成 First jib section assembly		7.485×0.653×0.85	470
二节副臂总成 Second jib section assembly		7.53×0.46×0.66	340
副臂加长节 Jib extension		7.1×0.95×1.313	510
独立臂头 Independent jib		3.208×0.97×2.413	520



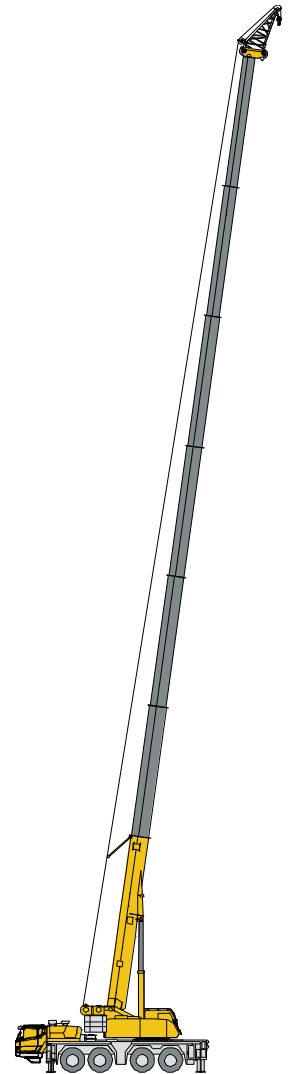
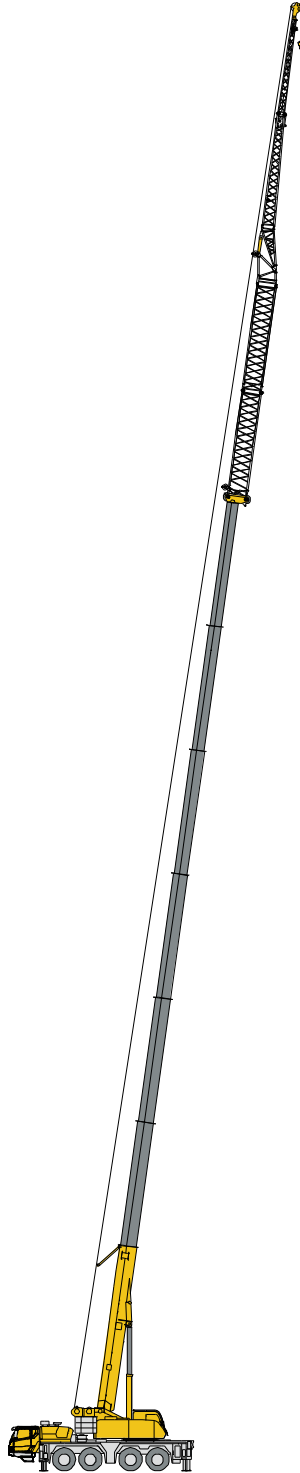
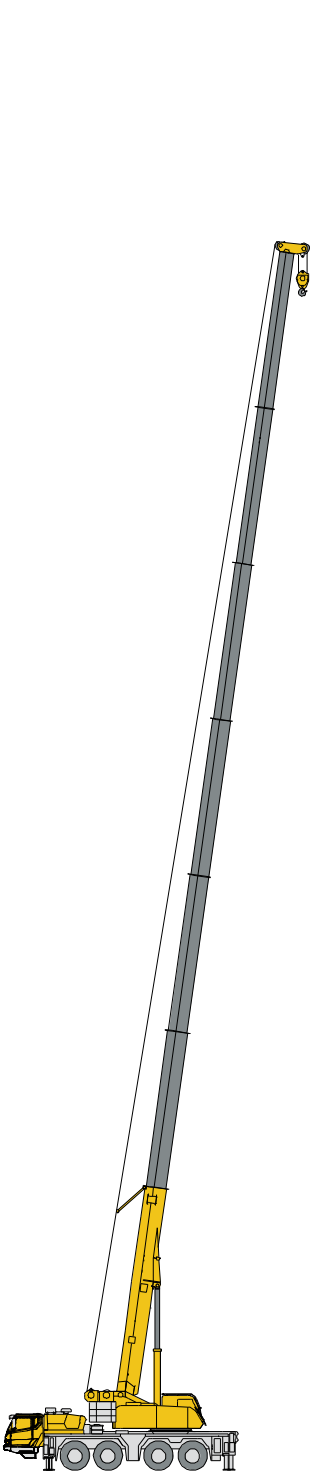
# 臂架组合方案

## Boom / Jib combinations

T 主臂

J 副臂

I 独立臂头



主臂  
Telescopic boom

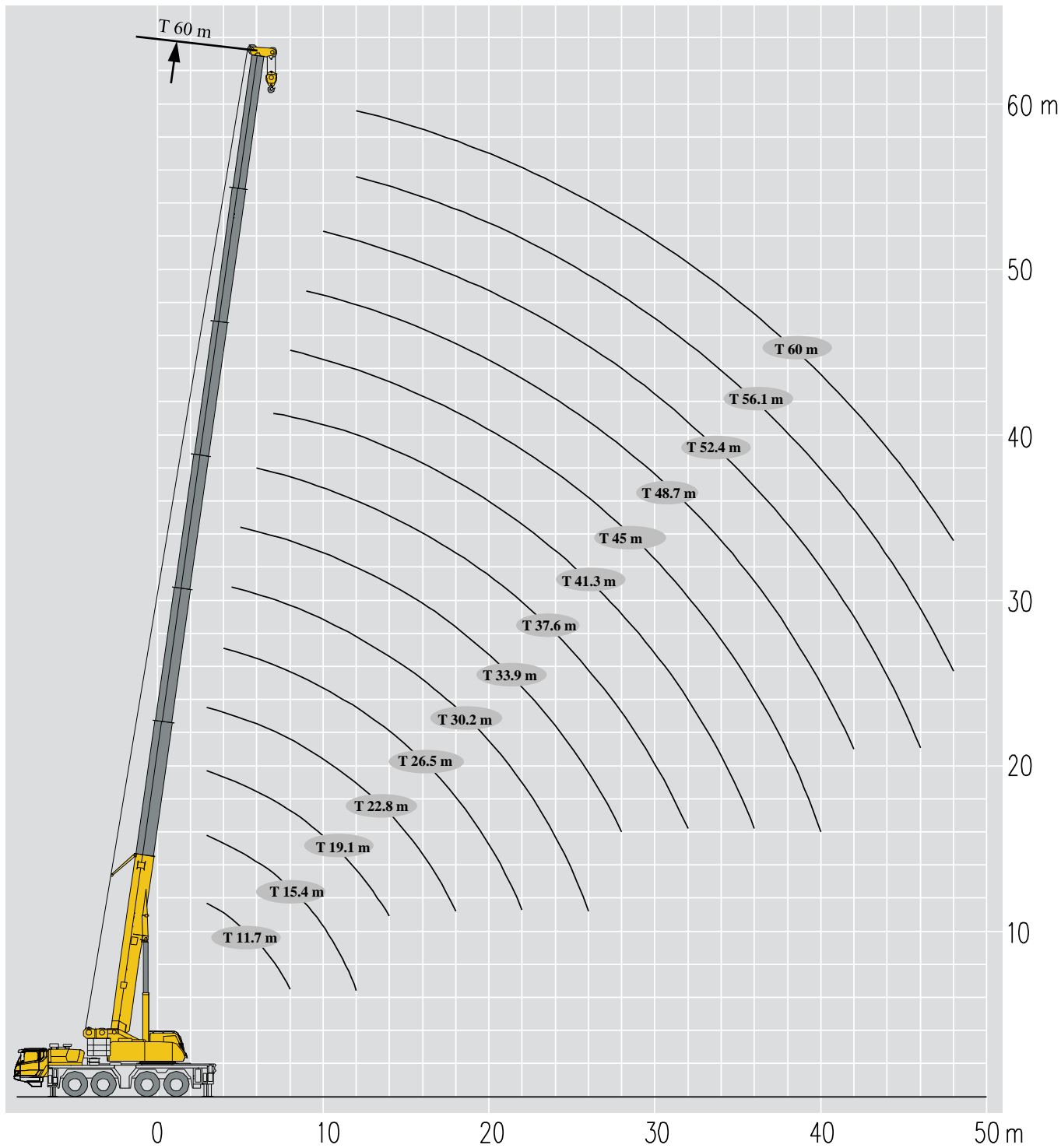
副臂  
Jib

独立臂头  
Independent jib

T : 11.7~60 m

T : 48.7~56.1+7+7 m  
J : 10.6~18.1 m

T : 11.7~60 m  
I : 2.9 m



# 起重性能表

## Lifting capacities

T 11.7~33.9m



m	Lifting Capacity (t)										m
	11.7 m	11.7 m	15.4 m	15.4 m	15.4 m	19.1 m	19.1 m	19.1 m	22.8 m	22.8 m	
3	100*	65.0	65.0	63.5	61.3	60.5	59.5	59.0	55.5	3	
3.5		61.7	61.8	60.0	59.5	57.7	56.8	56.3	55.1	3.5	
4		59.6	59.0	58.5	57.0	54.6	53.9	53.1	52.0	4	
4.5		55.1	55.4	55.0	51.7	51.8	51.0	49.6	49.7	4.5	
5		45.2	50.4	48.5	45.6	49.6	48.6	48.0	47.0	5	
6		42.1	44.0	44.8	40.0	43.9	45.2	43.0	43.2	6	
7		38.9	39.0	39.5	38.0	38.3	39.1	40.2	38.4	7	
8		34.3	33.6	34.9	35.3	34.1	34.8	35.8	34.3	8	
9			31.0	31.6	30.8	31.5	31.8	32.1	31.8	9	
10			27.5	28.0	28.1	27.5	28.2	28.8	27.0	10	
12			22.0	22.4	22.6	22.5	23.0	23.2	22.8	12	
14						18.2	19.1	19.2	19.0	14	
16									15.0	16	
18									12.2	18	
组合 combi nation	000000	000000	010000	000100	000010	011000	001100	000110	011100	组合 combi nation	

m	Lifting Capacity (t)										m
	22.8 m	22.8 m	26.5 m	26.5 m	26.5 m	30.2 m	30.2 m	30.2 m	33.9 m	33.9 m	
3	54.8	54.5								3	
3.5	54.2	53.8								3.5	
4	51.3	50.7	49.0	48.7	48.5					4	
4.5	49.1	48.6	46.2	46.0	45.6	45.2	45.0	41.3		4.5	
5	46.1	45.7	43.8	43.6	43.0	43.2	42.5	39.2	39.0	5	
6	42.5	42.1	39.9	39.5	38.9	39.3	38.5	35.9	37.4	6	
7	40.3	38.0	36.0	36.8	35.7	36.0	35.2	33.2	34.2	7	
8	36.0	36.0	34.0	34.2	34.5	32.5	33.7	30.3	31.8	8	
9	32.2	32.2	31.5	31.8	32.1	31.4	31.8	28.4	29.8	9	
10	27.5	28.1	29.8	29.8	30.7	28.0	28.4	26.5	27.9	10	
12	23.0	23.5	22.1	22.5	22.9	23.3	24.9	22.2	22.2	12	
14	19.2	19.4	18.2	18.8	19.3	18.9	19.3	19.6	19.0	14	
16	16.0	16.3	14.4	15.7	16.8	15.1	16.4	16.6	16.0	16	
18	12.8	13.8	11.7	12.9	13.9	12.3	13.5	14.1	13.4	18	
20			9.5	10.7	11.7	10.1	11.4	12.2	11.2	20	
22			7.8	9.0	10.0	8.4	9.6	10.5	9.5	22	
24						7.1	8.2	9.1	8.1	24	
26						5.9	7.1	8.0	7.0	26	
28									6.0	28	
组合 combi nation	001110	000111	111100	011110	001111	111110	011111	001112	012111	组合 combi nation	

# 起重性能表

## Lifting capacities

T 33.9~60m



m	33.9 m									m
	33.9 m	33.9 m	37.6 m	37.6 m	37.6 m	41.3 m	41.3 m	41.3 m	45 m	
5	39.9	38.0								5
6	37.6	37.2	34.4	30.8	26.5					6
7	34.4	34.0	33.5	28.7	24.8	28.1	27.5	26.7		7
8	32.0	31.6	31.0	28.3	25.2	27.8	27.0	25.4	23.2	8
9	29.9	29.7	28.8	26.5	23.8	27.3	26.9	24.0	23.0	9
10	28.2	28.0	27.2	24.9	22.4	25.5	25.1	22.8	22.8	10
12	23.3	23.0	23.0	22.1	20.0	22.8	22.2	20.6	21.1	12
14	18.4	19.3	19.0	18.4	18.1	19.0	19.0	18.7	18.8	14
16	15.7	16.3	16.0	16.3	16.3	15.6	16.0	16.6	15.1	16
18	12.9	14.0	13.1	13.9	14.0	12.8	13.2	13.7	12.3	18
20	10.8	11.8	11.0	11.8	12.1	10.6	11.0	11.6	10.2	20
22	9.1	10.1	9.3	10.0	10.4	8.9	9.3	9.9	8.5	22
24	7.7	8.7	7.9	8.6	9.0	7.5	7.9	8.5	7.1	24
26	6.5	7.8	6.7	7.5	7.8	6.4	6.8	7.5	6.0	26
28	5.6	6.8	5.8	6.5	6.8	5.4	5.8	6.3	5.0	28
30			4.9	5.7	6.0	4.6	5.0	5.5	4.2	30
32			4.2	5.0	5.3	3.9	4.3	4.8	3.5	32
34						3.3	3.7	4.2	2.9	34
36						2.8	3.1	3.6	2.3	36
38									1.9	38
40									1.4	40
组合 combi nation	111111	011112	111211	012112	011122	211121	121112	111122	222111	组合 combi nation

m	45 m									m
	45 m	45 m	48.7 m	48.7 m	48.7 m	52.4 m	52.4 m	56.1 m	60 m	
8	20.9	22.8								8
9	20.0	21.9	20.9	20.1	18.6					9
10	19.1	20.9	20.7	19.3	17.8	18.6	17.0			10
12	17.3	18.9	19.5	18.2	17.2	17.2	15.7	14.9	13.0	12
14	15.8	17.2	17.6	16.5	15.8	15.8	14.6	14.0	12.5	14
16	14.4	15.7	15.9	14.9	14.5	14.6	13.5	13.1	11.8	16
18	13.8	13.1	13.0	13.5	13.3	13.2	12.4	12.2	11.2	18
20	12.0	11.7	10.9	11.3	11.6	11.0	11.4	11.0	10.4	20
22	10.3	9.9	9.2	9.6	9.9	9.3	9.7	9.3	9.3	22
24	8.9	8.5	7.8	8.2	8.5	7.9	8.3	7.9	7.9	24
26	7.8	7.4	6.6	7.0	7.4	6.8	7.1	6.8	6.8	26
28	6.8	6.4	5.7	6.1	6.4	5.8	6.2	5.8	5.8	28
30	6.0	5.6	4.9	5.2	5.5	5.0	5.3	5.0	5.0	30
32	5.2	4.9	4.1	4.5	4.8	4.3	4.6	4.3	4.3	32
34	4.6	4.3	3.5	3.9	4.2	3.6	4.0	3.6	3.7	34
36	4.1	3.7	3.0	3.4	3.6	3.1	3.5	3.1	3.1	36
38	3.6	3.2	2.5	2.9	3.2	2.6	3.0	2.6	2.6	38
40	3.2	2.8	2.1	2.4	2.7	2.2	2.5	2.2	2.2	40
42			1.7	2.1	2.3	1.8	2.2	1.8	1.8	42
44						1.5	1.8	1.5	1.5	44
46						1.1	1.5	1.1	1.2	46
48									0.9	48
组合 combi nation	012222	111222	221122	122122	112222	221222	122222	222222	333333	组合 combi nation

# 起重性能表

## Lifting capacities

T 11.7~33.9m



m	11.7-33.9m								m
	11.7 m	15.4 m	15.4 m	15.4 m	19.1 m	19.1 m	19.1 m	22.8 m	
3	65.0	65.0	63.5	61.3	60.5	59.5	59.0	55.5	3
3.5	61.7	61.8	60.0	59.5	57.7	56.8	56.3	55.1	3.5
4	59.6	59.0	58.5	57.0	54.6	53.9	53.1	52.0	4
4.5	55.1	55.4	55.0	51.7	51.8	51.0	49.6	49.7	4.5
5	45.2	50.4	48.5	45.6	49.6	48.6	48.0	47.0	5
6	42.1	44.0	44.8	40.0	43.9	45.2	43.0	43.2	6
7	38.9	39.0	39.5	38.0	38.3	39.1	40.2	38.4	7
8	34.3	33.6	34.9	35.3	34.1	34.8	35.8	34.3	8
9		30.3	31.6	30.8	30.8	31.8	32.1	31.5	9
10		25.1	26.4	26.9	25.6	26.6	27.5	26.2	10
12		18.1	19.3	19.8	18.5	19.5	20.3	19.2	12
14					14.0	14.9	15.7	14.6	14
16								11.5	16
18								9.1	18
组合 combi nation	000000	010000	000100	000010	011000	001100	000110	011100	组合 combi nation

m	11.7-33.9m										m
	22.8 m	22.8 m	26.5 m	26.5 m	26.5 m	30.2 m	30.2 m	30.2 m	33.9 m		
3	54.8	54.5									3
3.5	54.2	53.8									3.5
4	51.3	50.7	49.0	48.7	48.5						4
4.5	49.1	48.6	46.2	46.0	45.6	45.2	45.0	41.3			4.5
5	46.1	45.7	43.8	43.6	43.0	43.2	42.5	39.2	39.0		5
6	42.5	42.1	39.9	39.5	38.9	39.3	38.5	35.9	37.4		6
7	40.3	38.0	36.0	36.8	35.7	36.0	35.2	33.2	34.2		7
8	36.0	36.0	34.0	34.2	34.5	32.5	33.7	30.3	31.8		8
9	32.2	32.2	30.8	31.8	32.1	31.4	31.8	28.4	29.8		9
10	27.4	28.1	25.5	27.0	28.3	26.3	27.8	26.5	27.7		10
12	20.3	21.2	18.5	19.9	21.1	19.2	20.6	21.7	20.5		12
14	15.7	16.6	14.0	15.3	16.4	14.7	16.0	17.0	15.9		14
16	12.5	13.4	10.9	12.1	13.2	11.5	12.8	13.7	12.7		16
18	10.1	11.0	8.6	9.8	10.8	9.2	10.4	11.3	10.3		18
20			6.8	8.0	9.0	7.4	8.6	9.5	8.5		20
22			5.4	6.6	7.6	6.0	7.2	8.1	7.1		22
24						4.9	6.0	6.9	5.9		24
26						3.9	5.1	5.9	5.0		26
28									4.2		28
组合 combi nation	001110	000111	111100	011110	001111	111110	011111	001112	012111	组合 combi nation	

# 起重性能表

## Lifting capacities

T 33.9~60m



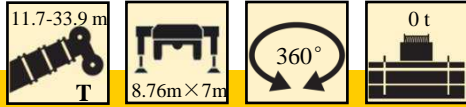
m	Lifting Capacity (t)										m
	33.9 m	33.9 m	37.6 m	37.6 m	37.6 m	41.3 m	41.3 m	41.3 m	45 m	45 m	
5	39.9	38.0									5
6	37.6	37.2	34.4	30.8	26.5						6
7	34.4	34.0	33.5	28.7	24.8	28.1	27.5	26.7			7
8	32.0	31.6	31.0	28.3	25.2	27.8	27.0	25.4	23.2		8
9	29.9	29.7	28.8	26.5	23.8	27.3	26.9	24.0	23.0		9
10	27.1	28.0	27.2	24.9	22.4	25.5	25.1	22.8	22.8		10
12	20.0	21.2	20.2	21.1	20.0	19.8	20.3	20.6	19.3		12
14	15.4	16.6	15.6	16.5	16.8	15.2	15.7	16.2	14.7		14
16	12.2	13.3	12.4	13.2	13.6	12.0	12.5	13.0	11.6		16
18	9.8	10.9	10.0	10.8	11.2	9.7	10.1	10.7	9.2		18
20	8.0	9.1	8.2	9.0	9.4	7.9	8.3	8.8	7.4		20
22	6.6	7.7	6.8	7.6	7.9	6.5	6.9	7.4	6.0		22
24	5.5	6.5	5.7	6.4	6.8	5.3	5.7	6.2	4.9		24
26	4.5	5.5	4.7	5.5	5.8	4.4	4.8	5.3	3.9		26
28	3.7	4.7	3.9	4.6	5.0	3.6	4.0	4.5	3.1		28
30			3.2	4.0	4.3	2.9	3.3	3.8	2.5		30
32			2.6	3.4	3.7	2.3	2.7	3.2	1.9		32
34						1.8	2.2	2.7	1.4		34
36						1.3	1.7	2.2			36
组合 combi nation	111111	011112	111211	012112	011122	211121	121112	111122	222111		组合 combi nation

m	Lifting Capacity (t)										m
	45 m	45 m	48.7 m	48.7 m	48.7 m	52.4 m	52.4 m	56.1 m	60 m	60 m	
8	20.9	22.8									8
9	20.0	21.9	20.9	20.1	18.6						9
10	19.1	20.9	20.7	19.3	17.8	18.6	17.0				10
12	17.3	18.9	19.5	18.2	17.2	17.2	15.7	14.9	13.0		12
14	15.8	16.4	15.5	15.9	15.8	15.6	14.6	14.0	12.5		14
16	13.6	13.1	12.3	12.7	13.1	12.4	12.9	12.4	11.8		16
18	11.2	10.8	10.0	10.4	10.7	10.1	10.5	10.1	10.1		18
20	9.3	8.9	8.2	8.6	8.9	8.3	8.7	8.3	8.3		20
22	7.9	7.5	6.7	7.1	7.4	6.9	7.2	6.9	6.9		22
24	6.7	6.3	5.6	6.0	6.3	5.7	6.1	5.7	5.7		24
26	5.7	5.4	4.6	5.0	5.3	4.7	5.1	4.7	4.8		26
28	4.9	4.6	3.8	4.2	4.5	3.9	4.3	3.9	4.0		28
30	4.2	3.9	3.1	3.5	3.8	3.3	3.6	3.2	3.3		30
32	3.6	3.3	2.5	2.9	3.2	2.7	3.0	2.7	2.7		32
34	3.1	2.7	2.0	2.4	2.7	2.1	2.5	2.1	2.2		34
36	2.7	2.3	1.6	1.9	2.2	1.7	2.0	1.7	1.7		36
38	2.3	1.9	1.2	1.5	1.8	1.3	1.6	1.3	1.3		38
40	1.9	1.5		1.2	1.5		1.3		0.9		40
42					1.1						42
组合 combi nation	012222	111222	221122	122122	112222	221222	122222	222222	333333		组合 combi nation

# 起重性能表

## Lifting capacities

T 11.7~33.9m



m	11.7 m								m
	11.7 m	15.4 m	15.4 m	15.4 m	19.1 m	19.1 m	19.1 m	22.8 m	
3	65.0	65.0	63.5	61.3	60.5	59.5	59.0	55.5	3
3.5	61.7	61.8	60.0	59.5	57.7	56.8	56.3	55.1	3.5
4	59.6	59.0	58.5	57.0	54.6	53.9	53.1	52.0	4
4.5	55.1	55.4	55.0	51.7	51.8	51.0	49.6	49.7	4.5
5	45.2	50.4	48.5	45.6	49.6	48.6	48.0	47.0	5
6	38.6	38.0	39.5	38.0	38.6	40.1	41.3	39.6	6
7	27.8	27.2	28.8	29.4	27.7	29.0	30.1	28.6	7
8	21.1	20.6	22.0	22.6	21.1	22.2	23.2	21.8	8
9		16.1	17.5	18.0	16.6	17.6	18.6	17.3	9
10		12.7	14.1	14.7	13.2	14.3	15.2	13.9	10
12		8.1	9.4	9.9	8.5	9.5	10.4	9.2	12
14					5.6	6.6	7.4	6.3	14
16								4.3	16
18								2.8	18
组合 combi nation	000000	010000	000100	000010	011000	001100	000110	011100	组合 combi nation

m	22.8 m								m	
	22.8 m	22.8 m	26.5 m	26.5 m	26.5 m	30.2 m	30.2 m	30.2 m		33.9 m
3	54.8	54.5								3
3.5	54.2	53.8								3.5
4	51.3	50.7	49.0	48.7	48.5					4
4.5	49.1	48.6	46.2	46.0	45.6	45.2	45.0	41.3		4.5
5	46.1	45.7	43.8	43.6	43.0	43.2	42.5	39.2	39.0	5
6	41.3	42.1	38.6	39.5	38.9	39.3	38.5	35.9	37.4	6
7	30.1	31.3	27.7	29.5	31.1	28.6	30.5	31.9	30.4	7
8	23.2	24.3	21.0	22.7	24.2	21.9	23.6	24.9	23.5	8
9	18.5	19.6	16.5	18.1	19.4	17.3	18.9	20.1	18.8	9
10	15.2	16.2	13.1	14.8	16.1	14.0	15.6	16.7	15.4	10
12	10.4	11.4	8.5	10.0	11.2	9.3	10.8	11.9	10.6	12
14	7.4	8.3	5.6	7.0	8.2	6.3	7.7	8.8	7.6	14
16	5.4	6.3	3.7	5.0	6.1	4.3	5.7	6.7	5.6	16
18	3.9	4.8	2.2	3.5	4.6	2.9	4.2	5.1	4.1	18
20			1.2	2.4	3.5	1.8	3.1	4.0	2.9	20
22				1.5	2.6		2.2	3.1	2.1	22
24							1.5	2.4	1.4	24
26								1.8		26
组合 combi nation	001110	000111	111100	011110	001111	111110	011111	001112	012111	组合 combi nation



# 起重性能表

## Lifting capacities

T 33.9~60m



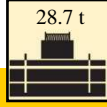
m	33.9-60m										m
	33.9 m	33.9 m	37.6 m	37.6 m	37.6 m	41.3 m	41.3 m	41.3 m	45 m		
5	39.9	38.0	41.9	37.6	30.5						5
6	37.6	37.2	34.4	30.8	26.5						6
7	29.6	31.3	30.0	28.7	24.8	28.1	27.5	26.7			7
8	22.8	24.3	23.1	24.2	24.7	22.6	23.2	23.9	21.9		8
9	18.2	19.6	18.5	19.5	20.0	18.0	18.5	19.2	17.4		9
10	14.9	16.2	15.1	16.1	16.5	14.7	15.2	15.9	14.0		10
12	10.0	11.4	10.3	11.3	11.7	9.9	10.4	11.0	9.3		12
14	7.1	8.3	7.3	8.2	8.6	6.9	7.4	8.0	6.4		14
16	5.0	6.2	5.3	6.1	6.5	4.9	5.3	5.9	4.4		16
18	3.6	4.7	3.8	4.6	5.0	3.4	3.9	4.4	2.9		18
20	2.5	3.6	2.7	3.5	3.9	2.3	2.7	3.3	1.8		20
22	1.6	2.7	1.8	2.6	3.0	1.5	1.9	2.4			22
24		2.0	1.1	1.9	2.2		1.2	1.7			24
26		1.4		1.3	1.6			1.1			26
28					1.1						28
组合 combi nation	111111	011112	111211	012112	011122	211121	121112	111122	222111		组合 combi nation

m	33.9-60m										m
	45 m	45 m	48.7 m	48.7 m	48.7 m	52.4 m	52.4 m	56.1 m	60 m		
8	20.9	22.8									8
9	19.9	19.4	18.3	18.9	18.6						9
10	16.5	16.0	15.0	15.5	15.9	15.2	15.7				10
12	11.7	11.2	10.2	10.7	11.1	10.3	10.8	10.3	10.4		12
14	8.6	8.1	7.2	7.7	8.0	7.4	7.8	7.3	7.4		14
16	6.5	6.0	5.2	5.6	6.0	5.3	5.7	5.3	5.3		16
18	5.0	4.5	3.7	4.1	4.5	3.8	4.3	3.8	3.9		18
20	3.8	3.4	2.6	3.0	3.3	2.7	3.1	2.7	2.7		20
22	2.9	2.5	1.7	2.1	2.4	1.8	2.2	1.8	1.9		22
24	2.2	1.8	1.0	1.4	1.7	1.1	1.5	1.1	1.2		24
26	1.6	1.2			1.1						26
28	1.1										28
组合 combi nation	012222	111222	221122	122122	112222	221222	122222	222222	333333		组合 combi nation

# 起重性能表

## Lifting capacities

T 11.7~33.9m



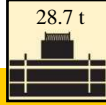
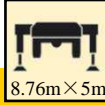
m	Lifting Capacity (t)									m
	11.7 m	15.4 m	15.4 m	15.4 m	19.1 m	19.1 m	19.1 m	22.8 m		
3	65.0	65.0	63.5	61.3	60.5	59.5	59.0	55.5	3	
3.5	61.7	61.8	60.0	59.5	57.7	56.8	56.3	55.1	3.5	
4	59.6	59.0	58.5	57.0	54.6	53.9	53.1	52.0	4	
4.5	55.1	55.4	55.0	51.7	51.8	51.0	49.6	49.7	4.5	
5	45.2	50.4	48.5	45.6	49.6	48.6	48.0	47.0	5	
6	42.1	44.0	44.8	40.0	43.9	45.2	43.0	43.2	6	
7	38.9	39.0	39.5	38.0	38.3	39.1	40.2	38.4	7	
8	34.3	33.6	34.9	35.3	34.1	34.8	35.8	34.3	8	
9		27.8	29.1	29.6	28.2	29.3	30.1	28.9	9	
10		23.2	24.4	24.9	23.6	24.6	25.4	24.2	10	
12		16.8	18.0	18.5	17.2	18.2	18.9	17.8	12	
14					13.1	14.0	14.7	13.7	14	
16								10.7	16	
18								8.6	18	
组合 combi nation	000000	010000	000100	000010	011000	001100	000110	011100	组合 combi nation	

m	Lifting Capacity (t)									m
	22.8 m	22.8 m	26.5 m	26.5 m	26.5 m	30.2 m	30.2 m	30.2 m	33.9 m	
3	54.8	54.5								3
3.5	54.2	53.8								3.5
4	51.3	50.7	49.0	48.7	48.5					4
4.5	49.1	48.6	46.2	46.0	45.6	45.2	45.0	41.3		4.5
5	46.1	45.7	43.8	43.6	43.0	43.2	42.5	39.2	39.0	5
6	42.5	42.1	39.9	39.5	38.9	39.3	38.5	35.9	37.4	6
7	40.3	38.0	36.0	36.8	35.7	36.0	35.2	33.2	34.2	7
8	36.0	36.0	34.0	34.2	34.5	32.5	33.7	30.3	31.8	8
9	30.1	31.1	28.2	29.7	31.0	29.0	30.5	28.4	29.8	9
10	25.4	26.4	23.6	25.0	26.2	24.3	25.7	26.5	25.6	10
12	18.9	19.8	17.2	18.5	19.7	17.9	19.2	20.2	19.1	12
14	14.7	15.6	13.1	14.3	15.4	13.7	15.0	16.0	14.9	14
16	11.7	12.6	10.2	11.4	12.4	10.8	12.0	13.0	11.9	16
18	9.5	10.4	8.0	9.2	10.2	8.6	9.8	10.7	9.7	18
20			6.3	7.5	8.5	6.9	8.1	9.0	8.0	20
22			5.0	6.1	7.1	5.6	6.8	7.6	6.6	22
24						4.5	5.7	6.5	5.5	24
26						3.6	4.8	5.6	4.6	26
28									3.9	28
组合 combi nation	001110	000111	111100	011110	001111	111110	011111	001112	012111	组合 combi nation

# 起重性能表

## Lifting capacities

T 33.9~60m



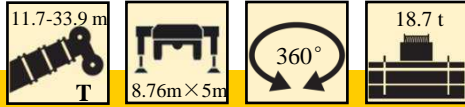
m	33.9 m										m
	33.9 m	33.9 m	37.6 m	37.6 m	37.6 m	41.3 m	41.3 m	41.3 m	45 m		
5	39.9	38.0									5
6	37.6	37.2	34.4	30.8	26.5						6
7	34.4	34.0	33.5	28.7	24.8	28.1	27.5	26.7			7
8	32.0	31.6	31.0	28.3	25.2	27.8	27.0	25.4	23.2		8
9	29.8	29.7	28.8	26.5	23.8	27.3	26.9	24.0	23.0		9
10	25.1	26.3	25.3	24.9	22.4	24.9	25.1	22.8	22.8		10
12	18.6	19.8	18.8	19.7	20.0	18.4	18.9	19.5	17.9		12
14	14.4	15.5	14.6	15.4	15.8	14.2	14.7	15.2	13.8		14
16	11.4	12.5	11.6	12.4	12.8	11.3	11.7	12.3	10.8		16
18	9.2	10.3	9.4	10.2	10.6	9.1	9.5	10.0	8.6		18
20	7.5	8.6	7.7	8.5	8.9	7.4	7.8	8.3	7.0		20
22	6.2	7.2	6.4	7.2	7.5	6.1	6.5	7.0	5.6		22
24	5.1	6.1	5.3	6.0	6.4	5.0	5.4	5.9	4.5		24
26	4.2	5.2	4.4	5.1	5.5	4.1	4.5	4.9	3.6		26
28	3.4	4.4	3.6	4.3	4.7	3.3	3.7	4.2	2.9		28
30			3.0	3.7	4.0	2.6	3.0	3.5	2.2		30
32			2.4	3.1	3.4	2.1	2.5	2.9	1.7		32
34						1.6	2.0	2.4	1.2		34
36						1.2	1.5	2.0			36
组合 combi nation	111111	011112	111211	012112	011122	211121	121112	111122	222111		组合 combi nation

m	45 m										m
	45 m	45 m	48.7 m	48.7 m	48.7 m	52.4 m	52.4 m	56.1 m	60 m		
8	20.9	22.8									8
9	20.0	21.9	20.9	20.1	18.6						9
10	19.1	20.9	20.7	19.3	17.8	18.6	17.0				10
12	17.3	18.9	18.7	18.2	17.2	17.2	15.7	14.9	13.0		12
14	15.8	15.4	14.5	15.0	15.3	14.7	14.6	14.0	12.5		14
16	12.8	12.4	11.5	12.0	12.3	11.7	12.1	11.7	11.7		16
18	10.5	10.1	9.3	9.8	10.1	9.5	9.9	9.5	9.5		18
20	8.8	8.4	7.7	8.1	8.4	7.8	8.2	7.8	7.8		20
22	7.4	7.1	6.3	6.7	7.0	6.4	6.8	6.4	6.5		22
24	6.3	6.0	5.2	5.6	5.9	5.3	5.7	5.3	5.4		24
26	5.4	5.0	4.3	4.7	5.0	4.4	4.8	4.4	4.5		26
28	4.6	4.3	3.5	3.9	4.2	3.7	4.0	3.7	3.7		28
30	4.0	3.6	2.9	3.3	3.5	3.0	3.4	3.0	3.0		30
32	3.4	3.0	2.3	2.7	3.0	2.4	2.8	2.4	2.5		32
34	2.9	2.5	1.8	2.2	2.5	1.9	2.3	1.9	2.0		34
36	2.5	2.1	1.4	1.8	2.0	1.5	1.8	1.5	1.5		36
38	2.1	1.7		1.4	1.7	1.1	1.5	1.1	1.1		38
40	1.7	1.4		1.0	1.3		1.1				40
组合 combi nation	012222	111222	221122	122122	112222	221222	122222	222222	333333		组合 combi nation

# 起重性能表

## Lifting capacities

T 11.7~33.9m



m	11.7-33.9m								m
	11.7 m	15.4 m	15.4 m	15.4 m	19.1 m	19.1 m	19.1 m	22.8 m	
3	65.0	65.0	63.5	61.3	60.5	59.5	59.0	55.5	3
3.5	61.7	61.8	60.0	59.5	57.7	56.8	56.3	55.1	3.5
4	59.6	59.0	58.5	57.0	54.6	53.9	53.1	52.0	4
4.5	55.1	55.4	55.0	51.7	51.8	51.0	49.6	49.7	4.5
5	45.2	50.4	48.5	45.6	49.6	48.6	48.0	47.0	5
6	42.1	44.0	44.8	40.0	43.9	45.2	43.0	43.2	6
7	33.9	33.4	34.8	33.6	33.9	35.1	36.1	34.6	7
8	26.5	26.0	27.4	28.0	26.5	27.6	28.5	27.2	8
9		21.0	22.3	22.8	21.4	22.5	23.3	22.1	9
10		17.3	18.5	19.0	17.7	18.7	19.5	18.3	10
12		12.2	13.3	13.8	12.6	13.5	14.3	13.2	12
14					9.2	10.1	10.9	9.8	14
16								7.5	16
18								5.7	18
组合 combi nation	000000	010000	000100	000010	011000	001100	000110	011100	组合 combi nation

m	11.7-33.9m										m
	22.8 m	22.8 m	26.5 m	26.5 m	26.5 m	30.2 m	30.2 m	30.2 m	33.9 m		
3	54.8	54.5									3
3.5	54.2	53.8									3.5
4	51.3	50.7	49.0	48.7	48.5						4
4.5	49.1	48.6	46.2	46.0	45.6	45.2	45.0	41.3			4.5
5	46.1	45.7	43.8	43.6	43.0	43.2	42.5	39.2	39.0		5
6	42.5	42.1	39.9	39.5	38.9	39.3	38.5	35.9	37.4		6
7	36.0	37.2	33.8	35.6	35.7	34.7	35.2	33.2	34.2		7
8	28.5	29.6	26.5	28.1	29.4	27.3	28.9	30.1	28.8		8
9	23.3	24.3	21.4	22.9	24.2	22.2	23.7	24.8	23.5		9
10	19.5	20.5	17.7	19.1	20.3	18.4	19.8	20.9	19.7		10
12	14.3	15.2	12.6	13.9	15.0	13.2	14.6	15.6	14.5		12
14	10.8	11.7	9.2	10.5	11.6	9.9	11.2	12.1	11.0		14
16	8.5	9.3	6.9	8.1	9.1	7.5	8.8	9.7	8.6		16
18	6.7	7.5	5.1	6.3	7.4	5.8	7.0	7.9	6.9		18
20			3.8	5.0	6.0	4.4	5.6	6.5	5.5		20
22			2.7	3.9	4.9	3.3	4.5	5.4	4.4		22
24						2.4	3.6	4.5	3.5		24
26						1.7	2.9	3.7	2.8		26
28									2.1		28
组合 combi nation	001110	000111	111100	011110	001111	111110	011111	001112	012111	组合 combi nation	

# 起重性能表

## Lifting capacities

T 33.9~60m



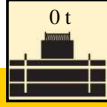
m	Lifting Capacity (t)										m
	33.9 m	33.9 m	37.6 m	37.6 m	37.6 m	41.3 m	41.3 m	41.3 m	45 m		
5	39.9	38.0	41.9	37.6	30.5						5
6	37.6	37.2	34.4	30.8	26.5						6
7	34.4	34.0	33.5	28.7	24.8	28.1	27.5	26.7			7
8	28.1	29.6	28.4	28.3	25.2	27.8	27.0	25.4	23.2		8
9	23.0	24.3	23.2	24.2	23.8	22.8	23.3	24.0	22.2		9
10	19.2	20.4	19.4	20.3	20.8	19.0	19.5	20.1	18.4		10
12	13.9	15.1	14.2	15.0	15.4	13.8	14.2	14.8	13.3		12
14	10.5	11.7	10.8	11.6	12.0	10.4	10.8	11.4	9.9		14
16	8.2	9.3	8.4	9.2	9.5	8.0	8.4	9.0	7.5		16
18	6.4	7.5	6.6	7.4	7.7	6.2	6.7	7.2	5.8		18
20	5.0	6.1	5.2	6.0	6.3	4.9	5.3	5.8	4.4		20
22	3.9	5.0	4.1	4.9	5.2	3.8	4.2	4.7	3.4		22
24	3.0	4.1	3.2	4.0	4.3	2.9	3.3	3.8	2.5		24
26	2.3	3.3	2.5	3.2	3.6	2.2	2.6	3.1	1.8		26
28	1.7	2.7	1.9	2.6	2.9	1.6	1.9	2.4	1.1		28
30			1.4	2.1	2.4	1.0	1.4	1.9			30
32				1.6	1.9			1.4			32
34								1.0			34
组合 combi nation	111111	011112	111211	012112	011122	211121	121112	111122	222111		组合 combi nation

m	Lifting Capacity (t)										m
	45 m	45 m	48.7 m	48.7 m	48.7 m	52.4 m	52.4 m	56.1 m	60 m		
8	20.9	22.8									8
9	20.0	21.9	20.9	20.1	18.6						9
10	19.1	20.2	19.3	19.3	17.8	18.6	17.0				10
12	15.4	14.9	14.1	14.5	14.9	14.2	14.7	14.2	13.0		12
14	11.9	11.5	10.7	11.1	11.4	10.8	11.2	10.8	10.8		14
16	9.5	9.1	8.3	8.7	9.0	8.4	8.8	8.4	8.4		16
18	7.7	7.3	6.5	6.9	7.2	6.6	7.0	6.6	6.7		18
20	6.3	5.9	5.1	5.5	5.8	5.3	5.6	5.3	5.3		20
22	5.2	4.8	4.0	4.4	4.7	4.2	4.5	4.2	4.2		22
24	4.3	3.9	3.1	3.5	3.8	3.3	3.6	3.3	3.3		24
26	3.5	3.2	2.4	2.8	3.1	2.5	2.9	2.5	2.6		26
28	2.9	2.5	1.8	2.2	2.5	1.9	2.3	1.9	1.9		28
30	2.4	2.0	1.3	1.6	1.9	1.4	1.7	1.4	1.4		30
32	1.9	1.5		1.2	1.5		1.3		1.0		32
34	1.5	1.1			1.1						34
36	1.1										36
组合 combi nation	012222	111222	221122	122122	112222	221222	122222	222222	333333		组合 combi nation

# 起重性能表

## Lifting capacities

T 11.7~33.9m



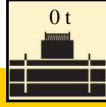
m	11.7 m								m
	11.7 m	15.4 m	15.4 m	15.4 m	19.1 m	19.1 m	19.1 m	22.8 m	
3	65.0	65.0	63.5	61.3	60.5	59.5	59.0	55.5	3
3.5	61.7	61.8	60.0	59.5	57.7	56.8	56.3	55.1	3.5
4	59.6	59.0	58.5	57.0	54.6	53.9	53.1	52.0	4
4.5	55.1	55.4	55.0	51.7	51.8	51.0	49.6	49.7	4.5
5	45.2	50.4	48.5	45.6	49.6	48.6	48.0	47.0	5
6	21.8	21.2	22.9	23.6	21.8	23.1	24.3	22.7	6
7	15.5	15.0	16.5	17.1	15.5	16.7	17.7	16.3	7
8	11.5	11.0	12.4	12.9	11.5	12.6	13.5	12.2	8
9		8.2	9.5	10.1	8.7	9.7	10.6	9.4	9
10		6.2	7.5	8.0	6.6	7.6	8.5	7.3	10
12		3.5	4.6	5.1	3.9	4.8	5.6	4.5	12
14					2.0	2.9	3.7	2.6	14
16								1.3	16
组合 combi nation	000000	010000	000100	000010	011000	001100	000110	011100	组合 combi nation

m	22.8 m								m	
	22.8 m	22.8 m	26.5 m	26.5 m	26.5 m	30.2 m	30.2 m	30.2 m		33.9 m
3	54.8	54.5							3	
3.5	54.2	53.8							3.5	
4	51.3	50.7	49.0	48.7	48.5				4	
4.5	49.1	48.6	46.2	46.0	45.6	45.2	45.0	41.3	4.5	
5	46.1	45.7	43.8	43.6	43.0	43.2	42.5	39.2	5	
6	24.2	25.6	21.7	23.7	25.3	22.7	24.7	26.2	6	
7	17.7	18.8	15.4	17.2	18.6	16.3	18.1	19.4	7	
8	13.5	14.6	11.4	13.0	14.4	12.3	13.9	15.1	8	
9	10.6	11.6	8.7	10.1	11.4	9.4	11.0	12.1	9	
10	8.4	9.4	6.6	8.0	9.3	7.4	8.8	9.9	10	
12	5.5	6.5	3.8	5.2	6.3	4.5	5.9	6.9	12	
14	3.7	4.5	2.0	3.3	4.4	2.7	4.0	4.9	14	
16	2.3	3.2		2.0	3.0	1.4	2.6	3.5	16	
18	1.3	2.2			2.0		1.6	2.5	18	
20					1.2			1.7	20	
22								1.1	22	
组合 combi nation	001110	000111	111100	011110	001111	111110	011111	001112	012111	组合 combi nation

# 起重性能表

## Lifting capacities

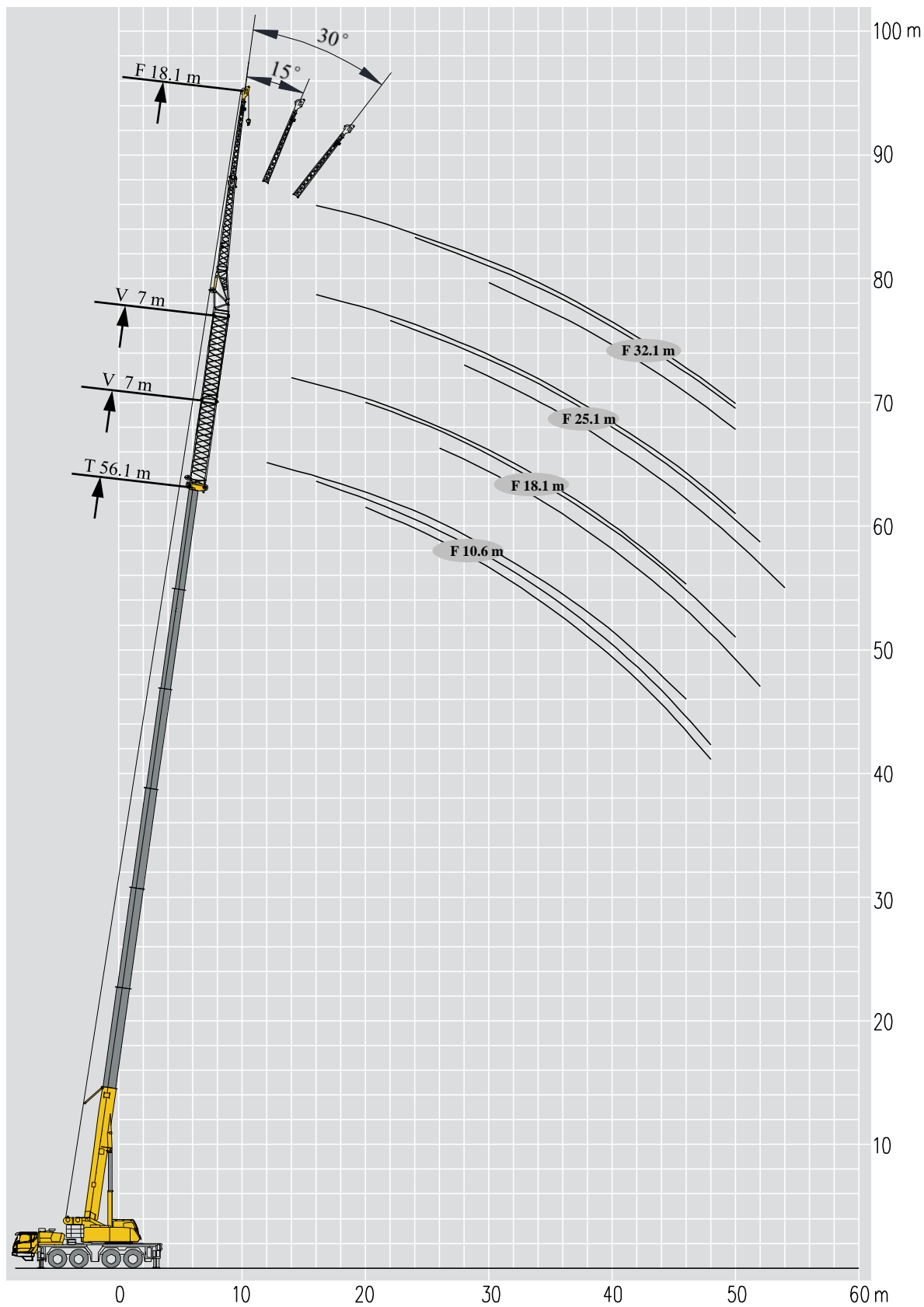
T 33.9~60m



m	33.9 m										m
	33.9 m	33.9 m	37.6 m	37.6 m	37.6 m	41.3 m	41.3 m	41.3 m	45 m		
5	39.9	38.0									5
6	23.8	25.5	24.1	25.4	26.0						6
7	17.3	18.8	17.5	18.7	19.2	17.0	17.6	18.4			7
8	13.1	14.5	13.4	14.4	14.9	12.9	13.5	14.2	12.3		8
9	10.2	11.6	10.5	11.5	11.9	10.0	10.6	11.2	9.5		9
10	8.1	9.4	8.4	9.3	9.7	7.9	8.4	9.1	7.4		10
12	5.2	6.4	5.5	6.3	6.7	5.1	5.5	6.1	4.6		12
14	3.4	4.5	3.6	4.4	4.8	3.2	3.6	4.2	2.7		14
16	2.0	3.1	2.2	3.0	3.4	1.9	2.3	2.8	1.4		16
18	1.0	2.1	1.3	2.0	2.4		1.3	1.8			18
20		1.3		1.3	1.6			1.1			20
组合 combi nation	111111	011112	111211	012112	011122	211121	121112	111122	222111		组合 combi nation

m	45 m										m
	45 m	45 m	48.7 m	48.7 m	48.7 m	52.4 m	52.4 m	56.1 m	60 m		
8	14.8	14.3									8
9	11.9	11.4	10.4	10.9	11.3						9
10	9.7	9.2	8.2	8.7	9.1	8.4	8.9				10
12	6.7	6.2	5.4	5.8	6.2	5.5	5.9	5.5	5.5		12
14	4.7	4.3	3.5	3.9	4.2	3.6	4.0	3.6	3.6		14
16	3.4	3.0	2.1	2.6	2.9	2.3	2.7	2.3	2.3		16
18	2.3	1.9	1.2	1.6	1.9	1.3	1.7	1.3	1.3		18
20	1.6	1.2			1.1						20
组合 combi nation	012222	111222	221122	122122	112222	221222	122222	222222	333333		组合 combi nation





# 起重性能表

## Lifting capacities

T 48.7~56.1m

m	48.7-56.1 m T			10.6 m F			8.76m×7m			360°			28.7 t			m						
	48.7 m						52.4 m						56.1 m									
	10.6 m									10.6 m												
	0°			15°			30°			0°			15°				30°					
12	9.6						8.2									6.5						12
14	9.5						8.1									6.4						14
16	9.3						8.0			8.0						6.4	6.6					16
18	9.2					8.2	8.0			8.0	8.0	7.6				6.4	6.4					18
20	8.5					8.0	7.8			7.9	7.5	7.5				6.3	6.3			6.3		20
22	8.0					7.7	7.2			7.0	6.8	6.8				6.2	6.2			6.0		22
24	7.0					7.0	6.4			6.3	6.1	6.1				5.7	5.6			5.5		24
26	6.5					6.3	5.7			5.6	5.6	5.6				5.0	4.9			4.9		26
28	5.7					5.7	5.1			5.0	5.0	5.0				4.5	4.4			4.4		28
30	4.9					5.2	4.6			4.6	4.5	4.5				4.0	4.0			4.0		30
32	4.2					4.7	4.1			4.1	4.1	4.1				3.5	3.5			3.6		32
34	3.6					4.1	3.5			3.7	3.7	3.7				3.1	3.1			3.2		34
36	3.0					3.5	3.0			3.3	3.4	3.4				2.8	2.8			2.8		36
38	2.6					3.0	2.5			2.8	3.0	3.0				2.4	2.5			2.5		38
40	2.1					2.5	2.1			2.4	2.5	2.5				2.0	2.0			2.1		40
42	1.7					2.1	1.8			2.0	2.1	2.1				1.5	1.7			1.7		42
44	1.4					1.7	1.4			1.6	1.7	1.7				1.2	1.2			1.4		44
46	1.1					1.3	1.1			1.3	1.4	1.4				0.8	1.0			1.0		46
48	0.8					1.0	0.8			1.0	1.0	1.0				0.8	0.8			0.8		48
组合 combinati on	221122						222122						222222						组合 combinati on			

m	48.7-56.1 m T			10.6 m F			8.76m×7m			360°			18.7 t			m						
	48.7 m						52.4 m						56.1 m									
	10.6 m									10.6 m												
	0°			15°			30°			0°			15°				30°					
12	9.6						8.2									6.5						12
14	9.5						8.1									6.4						14
16	9.3						8.0			8.0						6.4	6.6					16
18	9.2					8.2	8.0			8.0	8.0	7.6				6.4	6.4					18
20	8.2					8.0	7.8			7.9	7.5	7.5				6.3	6.3			6.3		20
22	6.8					7.7	6.8			7.0	6.8	6.8				6.2	6.2			6.0		22
24	5.6					6.5	5.6			6.1	6.1	6.1				5.7	5.6			5.5		24
26	4.7					5.5	4.7			5.1	5.5	5.5				5.0	4.9			4.9		26
28	3.9					4.6	3.9			4.3	4.6	4.6				4.2	4.2			4.4		28
30	3.2					3.8	3.2			3.6	3.9	3.9				3.4	3.5			3.8		30
32	2.6					3.2	2.6			2.9	3.2	3.2				2.8	2.9			3.1		32
34	2.1					2.6	2.1			2.4	2.6	2.6				2.3	2.3			2.6		34
36	1.6					2.1	1.6			1.9	2.1	2.1				1.8	1.8			2.1		36
38	1.2					1.6	1.2			1.5	1.7	1.7				1.3	1.4			1.6		38
40	0.9					1.2	0.9			1.1	1.3	1.3				1.0	1.0			1.2		40
42						0.9	0.9			0.8	0.9	0.9								0.9		42
组合 combinati on	221122						222122						222222						组合 combinati on			

m	48.7-56.1 m T			10.6 m F			8.76m×7m			360°			0 t			m						
	48.7 m						52.4 m						56.1 m									
	10.6 m									10.6 m												
	0°			15°			30°			0°			15°				30°					
10																						10
12	9.6						8.2									6.5						12
14	7.3						7.3									6.1	6.1					14
16	5.3						5.3			6.2						6.1	6.1					16
18	3.8					5.2	3.8			4.6	5.3	5.3				4.4	4.5					18
20	2.7					3.9	2.7			3.4	3.9	3.9				3.1	3.3			3.9		20
22	1.8					2.9	1.8			2.4	2.9	2.9				2.1	2.3			2.8		22
24	1.1					2.0	1.1			1.6	2.1	2.1				1.3	1.5			2.0		24
26						1.3				1.0	1.4	1.4					0.9			1.3		26
28						0.8					0.8	0.8										28
组合 combinati on	221122						222122						222222						组合 combinati on			

# 起重性能表

## Lifting capacities

T 48.7~56.1m

		48.7-56.1 m			18.1 m			8.76m×7m			360°			28.7 t				
		48.7 m			52.4 m			56.1 m										
		18.1 m			18.1 m			18.1 m										
		0°	15°	30°	0°	15°	30°	0°	15°	30°								
12	5.0				4.3													
14	4.8				4.2						3.8							
16	4.7				4.2						3.8							
18	4.5		4.2		4.2						3.7							
20	4.5	4.0			4.0	3.8					3.7	3.6						
22	4.3	3.9	3.5		4.0	3.7					3.6	3.5						
24	4.2	3.8	3.4		3.9	3.6	3.4				3.6	3.4						
26	4.0	3.7	3.3		3.9	3.5	3.3				3.5	3.4	3.4					
28	3.9	3.6	3.3		3.8	3.5	3.3				3.5	3.3	3.3					
30	3.8	3.6	3.3		3.7	3.4	3.3				3.4	3.3	3.2					
32	3.7	3.5	3.3		3.6	3.3	3.2				3.3	3.3	3.1					
34	3.6	3.5	3.2		3.4	3.2	3.2				2.9	3.0	3.0					
36	3.5	3.4	3.2		3.1	3.1	3.1				2.6	2.7	2.7					
38	3.0	3.3	3.2		2.7	2.8	2.9				2.2	2.4	2.5					
40	2.6	2.9	3.0		2.5	2.5	2.6				2.0	2.1	2.2					
42	2.2	2.5	2.8		2.2	2.2	2.3				1.6	1.9	2.0					
44	1.8	2.1	2.4		1.8	1.8	2.1				1.2	1.6	1.7					
46	1.5	1.8	2.0		1.5	1.5	1.8				1.0	1.4	1.5					
48	1.2	1.5	1.7		1.2	1.2	1.5					1.2	1.3					
50	0.9	1.2	1.4		1.0	1.0	1.2					0.8	1.1					
52		0.9	1.1		0.8	0.8	1.0						0.8					
54			0.8				0.8											
组合 combinati on		221122			222122			222222									组合 combinati on	

		48.7-56.1 m			18.1 m			8.76m×7m			360°			18.7 t				
		48.7 m			52.4 m			56.1 m										
		18.1 m			18.1 m			18.1 m										
		0°	15°	30°	0°	15°	30°	0°	15°	30°								
12	5.0				4.3													
14	4.8				4.2						3.8							
16	4.7				4.2						3.8							
18	4.5		4.2		4.2						3.7							
20	4.5	4.0			4.0	3.8					3.7	3.6						
22	4.3	3.9	3.5		4.0	3.7					3.6	3.5						
24	4.2	3.8	3.4		3.9	3.6	3.4				3.6	3.4						
26	4.0	3.7	3.3		3.9	3.5	3.3				3.5	3.4	3.4					
28	3.9	3.6	3.3		3.8	3.5	3.3				3.5	3.3	3.3					
30	3.6	3.6	3.3		3.7	3.4	3.3				3.4	3.3	3.2					
32	3.0	3.5	3.3		3.3	3.3	3.2				2.9	3.3	3.1					
34	2.5	3.0	3.2		2.7	3.0	3.2				2.4	2.9	3.0					
36	2.1	2.5	2.9		2.3	2.5	3.0				1.9	2.4	2.7					
38	1.7	2.1	2.5		1.8	2.1	2.5				1.5	2.0	2.4					
40	1.3	1.7	2.0		1.4	1.7	2.0				1.2	1.6	2.0					
42	1.0	1.3	1.6		1.1	1.3	1.6				0.8	1.2	1.6					
44		1.0	1.3		0.8	1.0	1.3					0.9	1.2					
46			0.9				1.0						0.9					
组合 combinati on		221122			222122			222222									组合 combinati on	

		48.7-56.1 m			18.1 m			8.76m×7m			360°			0 t				
		48.7 m			52.4 m			56.1 m										
		18.1 m			18.1 m			18.1 m										
		0°	15°	30°	0°	15°	30°	0°	15°	30°								
12	5.0																	
14	4.8				4.3													
16	4.7				4.2													
18	4.4		4.2		4.2													
20	3.2	4.0			3.7	3.8												
22	2.3	3.3	3.5		2.7	3.3												
24	1.6	2.5	3.3		1.9	2.5												
26	1.0	1.8	2.5		1.3	1.8	2.5											
28		1.2	1.9			1.2	1.9											
30			1.3				1.3											
32			0.8				0.8											
组合 combinati on		221122			222122			222222									组合 combinati on	

# 起重性能表

## Lifting capacities

T 48.7~56.1m

m	48.7+7 m			52.4+7 m			56.1+7 m			m
	18.1 m			18.1 m			18.1 m			
	0°	15°	30°	0°	15°	30°	0°	15°	30°	
	14	3.5			3.2					
16	3.4			3.1			2.8			16
18	3.3			3.1			2.8			18
20	3.3			3.1			2.7			20
22	3.3	3.3		3.0	3.0		2.7	2.6		22
24	3.3	3.2		3.0	3.0		2.7	2.6		24
26	3.2	3.2	3.1	3.0	2.9		2.7	2.6		26
28	3.2	3.1	3.0	3.0	2.9	2.8	2.7	2.6	2.5	28
30	3.1	3.0	2.8	2.9	2.8	2.7	2.7	2.6	2.5	30
32	3.0	2.9	2.8	2.9	2.8	2.7	2.6	2.5	2.5	32
34	2.8	2.7	2.7	2.7	2.7	2.6	2.6	2.5	2.5	34
36	2.7	2.6	2.6	2.6	2.6	2.5	2.2	2.4	2.4	36
38	2.6	2.5	2.5	2.4	2.5	2.4	1.9	2.1	2.2	38
40	2.5	2.4	2.4	2.1	2.2	2.3	1.6	1.8	2.0	40
42	2.2	2.3	2.3	1.8	2.0	2.1	1.3	1.6	1.7	42
44	1.8	2.2	2.2	1.4	1.8	1.9	1.0	1.4	1.5	44
46	1.5	1.8	2.0	1.2	1.6	1.7		1.0	1.3	46
48	1.2	1.5	1.8	1.0	1.4	1.5			1.0	48
50	1.0	1.2	1.5	0.8	1.0	1.3				50
52		1.0	0.9		0.8	0.8				52
54 组合 combinati on	221122			222122			222222			54 组合 combinati on

m	48.7+7 m			52.4+7 m			56.1+7 m			m
	18.1 m			18.1 m			18.1 m			
	0°	15°	30°	0°	15°	30°	0°	15°	30°	
	14	3.5			3.2					
16	3.4			3.1			2.8			16
18	3.3			3.1			2.8			18
20	3.3			3.1			2.7			20
22	3.3	3.3		3.0	3.0		2.7	2.6		22
24	3.3	3.2		3.0	3.0		2.7	2.6		24
26	3.2	3.2	3.1	3.0	2.9		2.7	2.6		26
28	3.2	3.1	3.0	3.0	2.9	2.8	2.7	2.6	2.5	28
30	3.1	3.0	2.8	2.9	2.8	2.7	2.7	2.6	2.5	30
32	3.0	2.9	2.8	2.9	2.8	2.7	2.6	2.5	2.5	32
34	2.6	2.7	2.7	2.4	2.7	2.6	2.4	2.5	2.5	34
36	2.1	2.6	2.6	2.0	2.5	2.5	1.9	2.4	2.4	36
38	1.7	2.1	2.5	1.6	2.0	2.4	1.5	2.0	2.2	38
40	1.3	1.7	2.1	1.2	1.6	2.0	1.2	1.6	2.0	40
42	1.0	1.4	1.7	0.9	1.3	1.6	0.8	1.3	1.6	42
44		1.1	1.4		1.0	1.3		0.9	1.3	44
46 组合 combinati on		0.8	1.0			1.0			1.0	46 组合 combinati on
	221122			222122			222222			

m	48.7+7 m			52.4+7 m			56.1+7 m			m
	18.1 m			18.1 m			18.1 m			
	0°	15°		0°	15°		0°	15°		
	14	3.5			3.2					
16	3.4			3.1			2.8			16
18	3.3			3.1			2.8			18
20	3.3			3.1			2.7			20
22	2.4		3.3	2.3		3.0	2.2		2.6	22
24	1.7		2.6	1.5		2.5	1.5		2.4	24
26	1.1		1.9	0.9		1.8	0.9		1.7	26
28			1.3			1.2			1.2	28
30 组合 combinati on			0.8							30 组合 combinati on
	221122			222122			222222			

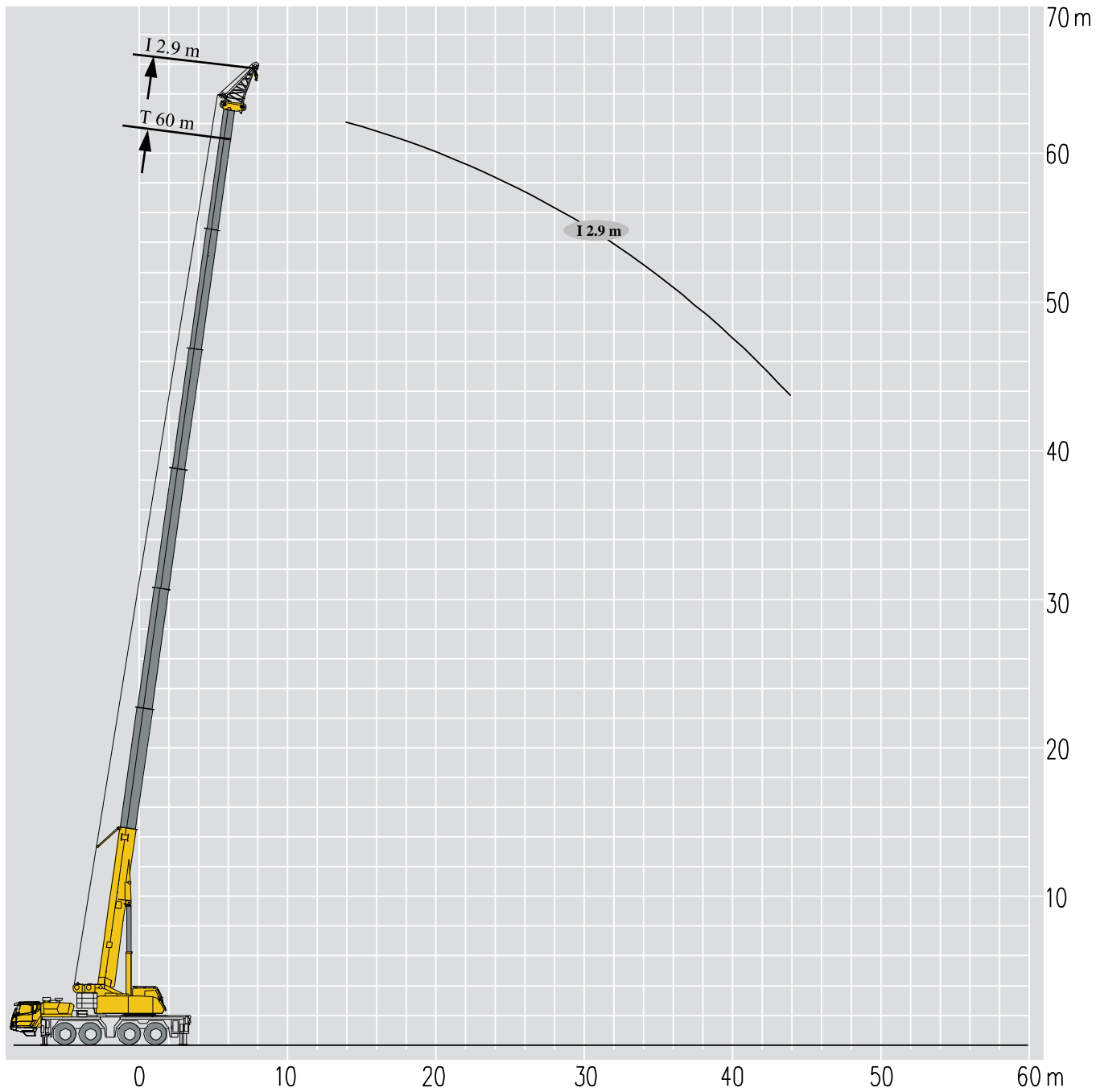
# 起重性能表

## Lifting capacities

T 48.7~56.1m

m	48.7+14 m			52.4+14 m			56.1+14 m			m
	18.1 m			18.1 m			18.1 m			
	0°	15°	30°	0°	15°	30°	0°	15°	30°	
	T			V			F			
16	2.4			2.2			1.9			16
18	2.3			2.2			1.9			18
20	2.3			2.1			1.8			20
22	2.3	2.4		2.1			1.8			22
24	2.3	2.4		2.1	2.2		1.8	1.9		24
26	2.2	2.3		2.0	2.2		1.7	1.8		26
28	2.2	2.3	2.3	2.0	2.1		1.7	1.8		28
30	2.2	2.2	2.2	2.0	2.1	2.0	1.6	1.7	1.8	30
32	2.2	2.2	2.1	2.0	2.0	2.0	1.6	1.7	1.7	32
34	2.1	2.2	2.1	2.0	2.0	2.0	1.6	1.6	1.7	34
36	2.1	2.1	2.0	1.9	1.9	2.0	1.6	1.6	1.7	36
38	2.0	2.0	1.9	1.8	1.8	1.9	1.6	1.6	1.7	38
40	1.8	1.8	1.8	1.8	1.8	1.8	1.3	1.5	1.6	40
42	1.7	1.7	1.8	1.6	1.7	1.8	1.0	1.2	1.5	42
44	1.6	1.6	1.7	1.4	1.5	1.6		1.0	1.2	44
46	1.4	1.6	1.7	1.2	1.3	1.4			1.0	46
48	1.2	1.4	1.6	0.9	1.1	1.2				48
50	0.8	1.2	1.4		0.8	1.0				50
52		1.0	1.2							52
54			1.0							54
组合 combinati on	221122			222122			222222			组合 combinati on

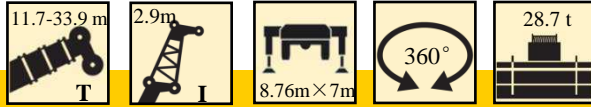
m	48.7+14 m			52.4+14 m			56.1+14 m			m
	18.1 m			18.1 m			18.1 m			
	0°	15°	30°	0°	15°	30°	0°	15°	30°	
	T			V			F			
16	2.4			2.2			1.9			16
18	2.3			2.2			1.9			18
20	2.3			2.1			1.8			20
22	2.3	2.4		2.1			1.8			22
24	2.3	2.4		2.1	2.2		1.8	1.9		24
26	2.2	2.3		2.0	2.2		1.7	1.8		26
28	2.2	2.3	2.3	2.0	2.1		1.7	1.8		28
30	2.2	2.2	2.2	2.0	2.1	2.0	1.6	1.7	1.8	30
32	2.2	2.2	2.1	2.0	2.0	2.0	1.6	1.7	1.7	32
34	2.1	2.2	2.1	2.0	2.0	2.0	1.6	1.6	1.7	34
36	2.1	2.1	2.0	1.9	1.9	2.0	1.6	1.6	1.7	36
38	2.0	2.0	1.9	1.8	1.8	1.9	1.6	1.6	1.7	38
40	1.6	1.8	1.8	1.5	1.8	1.8	1.3	1.5	1.6	40
42	1.3	1.7	1.8	1.1	1.5	1.8	1.0	1.2	1.5	42
44	1.0	1.3	1.6	0.8	1.2	1.5		1.0	1.2	44
46		1.0	1.3		0.9	1.2			1.0	46
48		0.8	1.0			0.9				48
组合 combinati on	221122			222122			222222			组合 combinati on



# 起重性能表

## Lifting capacities

T 11.7~33.9m



m	Lifting Capacity (t)								m
	11.7 m	15.4 m	15.4 m	15.4 m	19.1 m	19.1 m	19.1 m	22.8 m	
3	29.2	29.2	29.2	29.2	29.2	29.2	29.2	29.2	3
3.5	29.2	29.2	29.2	29.2	29.2	29.2	29.2	29.2	3.5
4	29.1	29.1	29.1	29.2	29.2	29.2	29.2	29.2	4
4.5	29.1	29.1	29.1	29.2	29.1	29.2	29.1	29.2	4.5
5	29.1	29.1	29.1	29.1	29.1	29.1	29.1	29.2	5
6	29.1	29.1	29.1	29.1	29.1	29.1	29.1	29.1	6
7	29.1	29.1	29.1	29.1	29.1	29.1	29.1	29.1	7
8	29.1	29.1	29.1	29.1	29.1	29.1	29.1	29.1	8
9	29.1	29.1	29.1	29.1	29.1	29.1	29.1	29.1	9
10	27.2	27.5	27.4	27.6	27.5	27.6	27.5	27.5	10
12		22	22.2	22.2	22.2	22.2	22.2	22.1	12
14		18.2	18.3	18.2	18.5	18.6	18.6	19.5	14
16					15.3	16	16.1	15.6	16
18					12.5	13.2	13.5	12.8	18
20								10.6	20
组合 combi nation	000000	010000	000100	000010	011000	001100	000110	011100	组合 combi nation


m	Lifting Capacity (t)										m
	22.8 m	22.8 m	26.5 m	26.5 m	26.5 m	30.2 m	30.2 m	30.2 m	33.9 m		
3	29.2	29.2									3
3.5	29.2	29.2									3.5
4	29.2	29.2	29.2	29.2	29.2						4
4.5	29.2	29.2	29.2	29.2	29.2						4.5
5	29.2	29.2	29.2	29.2	29.2	29.2	29.2	29.2			5
6	29.2	29.2	29.2	29.1	29.2	29.2	29.2	29.2	29.2		6
7	29.1	29.1	29.1	29.1	29.1	29.2	29.2	29.2	29.2	29.2	7
8	29.1	29.1	29.1	29.1	29.1	29.2	29.1	29.2	29.2	29.2	8
9	29.1	29.1	29.1	29.1	29.1	29.1	29.1	29.1	29.1	29.2	9
10	27.5	27.6	27.2	27.4	27.3	27	26.9	26.9	26.2		10
12	22.1	22.2	22.5	22.5	22.5	22.2	22.2	22.2	22.1		12
14	20.4	20.5	18.6	18.6	18.7	18.5	18.4	18.4	18.2		14
16	16.5	17.3	15	15.8	15.8	15.5	15.7	15.8	15.4		16
18	13.7	14.4	12.2	13.3	13.4	12.6	13.3	13.3	13.4		18
20	11.5	12.2	10	11.1	11.6	10.5	11.6	12	11.4		20
22			8.3	9.4	10.3	8.8	9.8	10.3	9.7		22
24			6.9	8	8.9	7.4	8.4	9	8.3		24
26						6.2	7.3	7.9	7.1		26
28						5.3	6.3	7.1	6.2		28
30									5.3		30
组合 combi nation	001110	000111	111100	011110	001111	111110	011111	001112	012111	组合 combi nation	



# 起重性能表

## Lifting capacities

T 33.9~60m

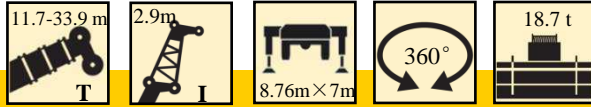
m											m
	33.9 m	33.9 m	37.6 m	37.6 m	37.6 m	41.3 m	41.3 m	41.3 m	45 m		
6	29.2	29.2									6
7	29.2	29.2	28.6	28.6	28.6	23.4	23.4	23.4			7
8	29.1	29.1	28	27.9	27.9	23.4	23.4	23.4	19.2		8
9	29.1	29.1	27.4	27.3	27.4	23	23.2	23	19.2		9
10	26.2	26.3	26	25.8	25.8	22.5	22.5	22.6	18.8		10
12	22	22	21.5	21.4	21.4	20.2	20.2	20.2	18.3		12
14	18.2	18.3	17.8	17.8	18	17	17	17	16.2		14
16	15.4	15.5	15.4	15.4	15.5	14.8	14.8	14.8	14.2		16
18	13.2	13.3	13.2	13.2	13.2	12.8	12.8	13	12.2		18
20	11	11.5	11.1	11.4	11.4	10.8	11.1	11.2	10.3		20
22	9.3	10.2	9.4	10	10	9	9.4	9.8	8.6		22
24	7.9	8.8	8	8.7	9	7.7	8	8.5	7.2		24
26	6.7	7.7	6.8	7.5	7.8	6.5	6.9	7.3	6.1		26
28	5.8	6.7	5.9	6.6	6.9	5.5	5.9	6.4	5.1		28
30	4.9	5.9	5	5.7	6	4.7	5.1	5.5	4.3		30
32			4.3	5	5.3	4	4.4	4.8	3.6		32
34			3.7	4.4	4.7	3.4	3.7	4.2	2.9		34
36						2.8	3.2	3.6	2.4		36
38						2.3	2.7	3.1	1.9		38
40									1.5		40
42									1.1		42
组合 combi nation	111111	011112	111211	012112	011122	211121	121112	111122	222111	组合 combi nation	

m											m
	45 m	45 m	48.7 m	48.7 m	48.7 m	52.4 m	52.4 m	56.1 m	60 m		
8	19.2	19.4									8
9	19.2	19.4									9
10	18.8	18.8	15.8	15.8	16	12.8	12.8				10
12	18.3	18.5	15.4	15.4	15.4	12.8	12.8	10.7	8.8		12
14	16.2	16.2	14.8	14.8	14.8	12.5	12.6	10.5	8.8		14
16	14.2	14.2	13.5	13.6	13.5	12	12	10.2	8.6		16
18	12.4	12.2	11.6	11.6	11.7	11.2	11.2	9.9	8.5		18
20	10.8	10.8	10.4	10.4	10.4	10	10	9.3	8.2		20
22	9.6	9.6	9.2	9.4	9.4	8.8	9	8	7.6		22
24	8.5	8.5	7.8	8.2	8.2	7.6	7.6	6.9	6.7		24
26	7.4	7.4	6.7	7	7.2	6.6	6.6	5.9	5.8		26
28	6.5	6.4	5.7	6.1	6.3	5.8	5.8	5.1	5		28
30	5.6	5.6	4.9	5.2	5.4	5	5.2	4.4	4.3		30
32	5	4.9	4.1	4.5	4.6	4.2	4.4	3.7	3.6		32
34	4.4	4.2	3.5	3.9	4	3.6	3.7	3.2	3.1		34
36	3.8	3.7	3	3.3	3.5	3.1	3.2	2.7	2.6		36
38	3.2	3.2	2.5	2.9	3	2.6	2.7	2.2	2.1		38
40	2.9	2.8	2.1	2.4	2.7	2.2	2.4	1.8	1.7		40
42	2.5	2.4	1.7	2	2.2	1.8	2	1.4	1.4		42
44			1.3	1.7	1.8	1.4	1.6	1.1	1		44
46						1.1	1.2	0.8			46
48							1				48
组合 combi nation	012222	111222	221122	122122	112222	221222	122222	222222	333333	组合 combi nation	

# 起重性能表

## Lifting capacities

T 11.7~33.9m




m	Lifting Capacity (t)								m
	11.7 m	15.4 m	15.4 m	15.4 m	19.1 m	19.1 m	19.1 m	22.8 m	
3	29.2	29.2	29.2	29.2	29.2	29.2	29.2	29.2	3
3.5	29.2	29.2	29.2	29.2	29.2	29.2	29.2	29.2	3.5
4	29.1	29.1	29.1	29.2	29.2	29.2	29.2	29.2	4
4.5	29.1	29.1	29.1	29.2	29.1	29.2	29.1	29.2	4.5
5	29.1	29.1	29.1	29.1	29.1	29.1	29.1	29.2	5
6	29.1	29.1	29.1	29.1	29.1	29.1	29.1	29.1	6
7	29.1	29.1	29.1	29.1	29.1	29.1	29.1	29.1	7
8	29.1	29.1	29.1	29.1	29.1	29.1	29.1	29.1	8
9	29.1	29.1	29.1	29.1	29.1	29.1	29.1	29.1	9
10	27.2	26.6	27.4	27.6	26.6	27.5	27.5	27	10
12		19.4	20.4	20.8	19.5	20.3	21	19.9	12
14		14.9	15.8	16.2	14.9	15.7	16.4	15.3	14
16					11.7	12.5	13.1	12.1	16
18					9.4	10.1	10.8	9.7	18
20								7.9	20
组合 combi nation	000000	010000	000100	000010	011000	001100	000110	011100	组合 combi nation

m	Lifting Capacity (t)										m
	22.8 m	22.8 m	26.5 m	26.5 m	26.5 m	30.2 m	30.2 m	30.2 m	33.9 m		
3	29.2	29.2									3
3.5	29.2	29.2									3.5
4	29.2	29.2	29.2	29.2	29.2						4
4.5	29.2	29.2	29.2	29.2	29.2						4.5
5	29.2	29.2	29.2	29.2	29.2	29.2	29.2	29.2			5
6	29.2	29.2	29.2	29.1	29.2	29.2	29.2	29.2	29.2		6
7	29.1	29.1	29.1	29.1	29.1	29.2	29.2	29.2	29.2	29.2	7
8	29.1	29.1	29.1	29.1	29.1	29.2	29.1	29.2	29.2	29.2	8
9	29.1	29.1	29.1	29.1	29.1	29.1	29.1	29.1	29.1	29.2	9
10	27.5	27.6	26.2	27.4	27.3	26.8	26.9	26.9	26.2	26.2	10
12	20.8	21.7	19.1	20.4	21.4	19.7	20.9	21.9	20.8	20.8	12
14	16.2	17	14.6	15.7	16.8	15.1	16.3	17.2	16.1	16.1	14
16	13	13.7	11.4	12.5	13.5	11.9	13.1	13.9	12.9	12.9	16
18	10.6	11.3	9.1	10.2	11.1	9.5	10.7	11.5	10.5	10.5	18
20	8.8	9.5	7.3	8.3	9.3	7.7	8.8	9.7	8.7	8.7	20
22			5.9	6.9	7.8	6.3	7.4	8.2	7.2	7.2	22
24			4.7	5.8	6.6	5.2	6.2	7	6.1	6.1	24
26						4.2	5.3	6	5.1	5.1	26
28						3.4	4.5	5.2	4.3	4.3	28
30									3.6	3.6	30
组合 combi nation	001110	000111	111100	011110	001111	111110	011111	001112	012111	组合 combi nation	

# 起重性能表

## Lifting capacities

T 33.9~60m

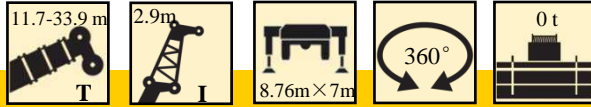
m											m
	33.9 m	33.9 m	37.6 m	37.6 m	37.6 m	41.3 m	41.3 m	41.3 m	45 m		
6	29.2	29.2									6
7	29.2	29.2	28.6	28.6	28.6	23.4	23.4	23.4			7
8	29.1	29.1	28	27.9	27.9	23.4	23.4	23.4	19.2		8
9	29.1	29.1	27.4	27.3	27.4	23	23.2	23	19.2		9
10	26.2	26.3	26	25.8	25.8	22.5	22.5	22.6	18.8		10
12	20.3	21.4	20.4	21.3	21.4	20	20.2	20.2	18.3		12
14	15.6	16.7	15.8	16.6	16.9	15.4	15.8	16.4	14.9		14
16	12.4	13.5	12.6	13.3	13.7	12.2	12.6	13.1	11.7		16
18	10.1	11.1	10.2	10.9	11.3	9.8	10.2	10.7	9.4		18
20	8.3	9.2	8.4	9.1	9.4	8	8.4	8.9	7.6		20
22	6.8	7.8	7	7.7	8	6.6	7	7.5	6.1		22
24	5.7	6.6	5.8	6.5	6.8	5.4	5.8	6.3	5		24
26	4.7	5.6	4.8	5.5	5.8	4.5	4.8	5.3	4		26
28	3.9	4.8	4	4.7	5	3.7	4	4.5	3.2		28
30	3.2	4.1	3.3	4	4.3	3	3.3	3.8	2.5		30
32			2.7	3.4	3.7	2.4	2.7	3.2	2		32
34			2.2	2.9	3.2	1.9	2.2	2.7	1.4		34
36						1.4	1.8	2.2			36
38						1	1.4	1.8			38
组合 combi nation	111111	011112	111211	012112	011122	211121	121112	111122	222111	组合 combi nation	

m											m
	45 m	45 m	48.7 m	48.7 m	48.7 m	52.4 m	52.4 m	56.1 m	60 m		
8	19.2	19.4									8
9	19.2	19.4	15.8	15.8	16						9
10	18.8	18.8	15.8	15.8	16	12.8	12.8				10
12	18.3	18.5	15.4	15.4	15.4	12.8	12.8	10.7	8.8		12
14	16.2	16.2	14.8	14.8	14.8	12.5	12.6	10.5	8.8		14
16	13.6	13.2	12.4	12.8	13.1	12	12	10.2	8.6		16
18	11.2	10.8	10	10.4	10.7	10.1	10.5	9.9	8.5		18
20	9.3	9	8.2	8.6	8.9	8.3	8.7	8.3	8.2		20
22	7.9	7.5	6.8	7.1	7.4	6.9	7.2	6.8	6.8		22
24	6.7	6.3	5.6	6	6.3	5.7	6.1	5.7	5.7		24
26	5.7	5.4	4.6	5	5.3	4.7	5.1	4.7	4.7		26
28	4.9	4.6	3.8	4.2	4.5	3.9	4.3	3.9	3.9		28
30	4.2	3.9	3.1	3.5	3.8	3.2	3.6	3.2	3.2		30
32	3.6	3.3	2.5	2.9	3.2	2.6	3	2.6	2.6		32
34	3.1	2.7	2	2.4	2.7	2.1	2.5	2.1	2.1		34
36	2.6	2.3	1.6	1.9	2.2	1.7	2	1.6	1.6		36
38	2.2	1.9	1.2	1.5	1.8	1.3	1.6	1.2	1.2		38
40	1.8	1.5		1.2	1.4		1.2				40
42	1.5	1.2			1.1						42
组合 combi nation	012222	111222	221122	122122	112222	221222	122222	222222	333333	组合 combi nation	

# 起重性能表

## Lifting capacities

T 11.7~33.9m



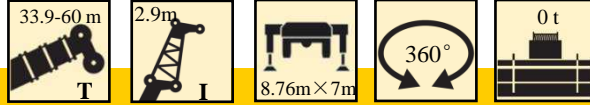
m	Lifting Capacity (t)								m
	11.7 m	15.4 m	15.4 m	15.4 m	19.1 m	19.1 m	19.1 m	22.8 m	
3	29.2	29.2	29.2	29.2	29.2	29.2	29.2	29.2	3
3.5	29.2	29.2	29.2	29.2	29.2	29.2	29.2	29.2	3.5
4	29.1	29.1	29.1	29.2	29.2	29.2	29.2	29.2	4
4.5	29.1	29.1	29.1	29.2	29.1	29.2	29.1	29.2	4.5
5	29.1	29.1	29.1	29.1	29.1	29.1	29.1	29.2	5
6	29.1	29.1	29.1	29.1	29.1	29.1	29.1	29.1	6
7	29.1	29.1	29.1	29.1	29.1	29.1	29.1	29.1	7
8	23.2	22.2	23.5	24	22.3	23.3	24.2	22.8	8
9	18.5	17.6	18.8	19.2	17.7	18.6	19.5	18.1	9
10	15.2	14.3	15.4	15.8	14.4	15.3	16	14.8	10
12		9.5	10.6	11	9.6	10.5	11.2	10	12
14		6.5	7.5	8	6.6	7.4	8.1	7	14
16					4.6	5.4	6	4.9	16
18					3.1	3.9	4.5	3.5	18
20								2.3	20
组合 combi nation	000000	010000	000100	000010	011000	001100	000110	011100	组合 combi nation

m	Lifting Capacity (t)								m	
	22.8 m	22.8 m	26.5 m	26.5 m	26.5 m	30.2 m	30.2 m	30.2 m		33.9 m
3	29.2	29.2							3	
3.5	29.2	29.2							3.5	
4	29.2	29.2	29.2	29.2	29.2				4	
4.5	29.2	29.2	29.2	29.2	29.2				4.5	
5	29.2	29.2	29.2	29.2	29.2	29.2	29.2	29.2	5	
6	29.2	29.2	29.2	29.1	29.2	29.2	29.2	29.2	6	
7	29.1	29.1	28.7	29.1	29.1	29.2	29.2	29.2	7	
8	24	25	21.9	23.4	24.7	22.6	24.1	25.3	8	
9	19.3	20.2	17.3	18.7	19.9	17.9	19.4	20.5	9	
10	15.8	16.7	14	15.3	16.5	14.6	16	17	10	
12	11	11.9	9.2	10.5	11.7	9.8	11.1	12.1	12	
14	8	8.8	6.2	7.5	8.5	6.8	8.1	9	14	
16	5.9	6.7	4.2	5.4	6.4	4.8	6	6.9	16	
18	4.4	5.1	2.8	3.9	4.9	3.3	4.5	5.3	18	
20	3.2	4	1.7	2.8	3.8	2.2	3.3	4.2	20	
22				1.9	2.8	1.3	2.4	3.2	22	
24				1.2	2.1		1.7	2.5	24	
26							1.1	1.9	26	
28								1.4	28	
组合 combi nation	001110	000111	111100	011110	001111	111110	011111	001112	012111	组合 combi nation

# 起重性能表

## Lifting capacities

T 33.9~60m

m											m
	33.9 m	33.9 m	37.6 m	37.6 m	37.6 m	41.3 m	41.3 m	41.3 m	45 m		
6	29.2	29.2									6
7	29.2	29.2	28.6	28.6	28.6	23.4	23.4	23.4			7
8	23.3	24.7	23.5	24.5	25	23.0	23.4	23.4	19.2		8
9	18.6	19.9	18.8	19.7	20.2	18.3	18.8	19.5	17.7		9
10	15.2	16.5	15.4	16.3	16.7	14.9	15.4	16	14.3		10
12	10.4	11.6	10.6	11.5	11.9	10.1	10.6	11.2	9.5		12
14	7.4	8.5	7.5	8.4	8.8	7.1	7.6	8.1	6.6		14
16	5.3	6.4	5.5	6.3	6.6	5.1	5.5	6	4.6		16
18	3.8	4.9	4	4.7	5.1	3.6	4	4.5	3.1		18
20	2.7	3.7	2.8	3.6	3.9	2.5	2.9	3.4	2		20
22	1.8	2.8	2	2.7	3	1.6	2	2.5	1.1		22
24	1.1	2.1	1.2	2	2.3		1.3	1.7			24
26		1.5		1.4	1.7			1.2			26
28					1.2						28
组合 combi nation	111111	011112	111211	012112	011122	211121	121112	111122	222111		组合 combi nation















m											m
	45 m	45 m	48.7 m	48.7 m	48.7 m	52.4 m	52.4 m	56.1 m	60 m		
8	19.2	19.4									8
9	19.2	19.4	15.8	15.8	16.0						9
10	16.6	16.1	15.2	15.6	16	12.8	12.8				10
12	11.8	11.3	10.3	10.8	11.2	10.5	10.9	10.4	8.8		12
14	8.6	8.2	7.3	7.8	8.1	7.4	7.9	7.4	7.4		14
16	6.5	6.1	5.3	5.7	6	5.4	5.8	5.3	5.3		16
18	5	4.6	3.8	4.2	4.5	3.9	4.3	3.8	3.9		18
20	3.8	3.4	2.6	3	3.4	2.7	3.1	2.7	2.7		20
22	2.9	2.5	1.8	2.2	2.5	1.9	2.2	1.8	1.8		22
24	2.2	1.8	1	1.4	1.7	1.1	1.5	1.1	1.1		24
26	1.6	1.2			1.1						26
28	1.1										28
组合 combi nation	012222	111222	221122	122122	112222	221222	122222	222222	333333		组合 combi nation

## 符号标识

### Description of symbols




#### 常规标识

##### General symbols

	支腿 Outriggers		车桥 Axle
	工作幅度 Radius		行驶速度 Driving speed
	吊臂仰角 Boom position		爬坡能力 Gradeability
	吊臂长度 Boom length		轮胎 Tires
	吊钩 Hook block		平衡重 Counterweight
	360°全回转 360° rotation		上车 superstructure
	卷扬 Winch		底盘 Chassis

#### 起重作业标识

##### Crane specific symbols

	主臂 Boom		副臂 Jib
	独立臂头臂 Independent jib head		

1. The total rated loads given in the rated load charts are the maximum lifting capacity when the crane is set up on firm and level ground, which includes the weight of the hook block and slings. The weight of above-mentioned devices should be deducted to correctly calculate the load weight.
2. The working radius shown in the rated load charts is the radius when the load is lifted off the ground, and it is the actual value including loaded boom deflection.
3. A lifting operation is permissible only when the wind force is below grade 5 (instantaneous wind speed is 14.1/s, wind pressure is 125N/m<sup>2</sup>).
4. Before beginning lifting operation, the operator should know the weight of the load to be lifted and its working range, and then select proper working conditions. Never operate the crane beyond the limit shown in the chart. Use the lower value from the chart when the boom length or working radius is between the range of values.
5. Observe the boom angle limit. Never operate the crane with the boom angle beyond the recommended limit even if a load is not being carried. Otherwise, the crane will tip.
6. The boom length given in the rated load charts should accord with the telescoping code of boom sections .



地址：中国江苏徐州市铜山路165号

Add : No.165 Tongshan Road Xuzhou Jiangsu China

电话(Tel) : 0516-83462242/83462350

质量监督电话(Quality Inquiry Tel) : 0516-87888268

备件电话(Spare Parts Tel) : 0516-83461542

邮编(Post Code) : 221004

网址(Web) : www.xcmg.com/qizhongji

服务热线 Service Tel

400-110-9999

400-001-5678



本印刷品不属于合同。出于产品不断改进的需要，我们保留对产品型号、参数、配置进行变更的权利，恕不另行通知。图片仅供参考，具体产品以实物为准。图片中产品可能并非标准配置，部分部件可能需要另行购置。办理牌照和上路行驶需遵守当地法规。

This print does not belong to the contract. We reserve the right to modify the design (such as product model, parameters and configuration) without notice for improvement. The pictures are just for reference. The product in the picture may not be standard configuration. Some parts need to be purchased separately. Conform to the local laws for license application and road traveling.