

## XCA220 全地面起重机 ALL TERRAIN CRANE



地址：中国江苏徐州市铜山路165号  
Add: No.165 Tongshan Road Xuzhou Jiangsu China  
电话 (Tel) : 0516-83462242 83462350  
质量监督电话 (Quality Inquiry Tel) : 0516-87888268  
备件电话 (Spare Parts Tel) : 0516-83461542  
邮编 (Post Code) : 221004

服务热线 Service Tel

**400-110-9999**  
**400-001-5678**



本印刷品不属于合同。由于产品不断改进的需要，我们保留对产品型号、参数、配置进行变更的权利，恕不另行通知。图片仅供参考，具体产品以实物为准。图片中的产品可能并非标准配置，部分部件可能需要另行购置。办证牌照和上路行驶需遵守当地法规。  
This print shall not be taken as a contract. Due to continuous product improvement, we reserve the right to make modification on the product model, parameters and configuration without further notice. The pictures presented here are only for reference; take the real product as standard. The product shown in the picture may not be of standard configuration, and some parts may need further purchase. Obey local laws and regulations on license and driving.

# XCA220

## 全地面起重机

# XCA220

## ALL TERRAIN CRANE

### 科技智能 绿色节能 品质效能 超高性能

SCIENCE AND TECHNOLOGY INTELLIGENCE, GREEN ENERGY SAVING  
QUALITY EFFICIENCY, ULTRA HIGH PERFORMANCE





# Beyond the limit 征服极限

## 再塑典范 become the model

- 七节73m主臂，44m副臂，最大起重能力：220吨，最大起升高度：108m，最大工作幅度（主臂+副臂）：84m，起重性能行业领先
- Seven-section boom of 73m with jib of 44m; the largest lifting capacity is 22t; the max. lifting height is 108m; the max. working radius (boom+jib) is 84m, which takes the lead in the industry
- 单发系统，动力强劲，最大爬坡度可达67%
- Single engine with strong power. The max. grade ability is 67%
- 行驶状态55t，重载转场最大可以携带全部平衡重
- 55t during the travel configuration and all the counterweight is allowed on board for heavy load site transfer
- 五桥底盘，全桥转向，三驱/四驱自由转换，行驶速度84km/h
- Five-axle chassis with all steering axles; 3rd/4th axles can steer freely; the travel speed can reach 84km/h
- 起重智能臂架系统
- Intelligent crane boom system
- 起重机行驶智能控制系统
- Intelligent driving control system

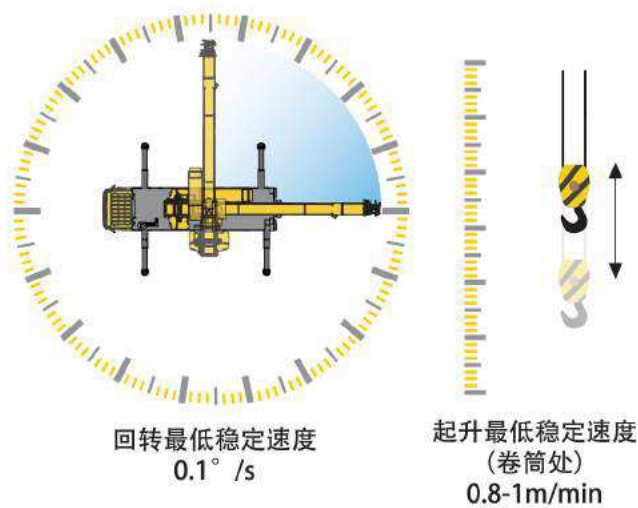






## 起重性能最强 Super hoisting performance

- 七节 73 米主臂，44m 副臂，最大臂长 108.2m，起重性能领先行业 5-10%，是目前臂长最长、起重性能最高的 220 吨全地面起重机；
- 单板臂头的应用，使得伸缩臂搭接长度增加，提升起重性能 1 ~ 3%；
- 使用单发系统，可以减少一个发动机的重量，该重量可以使臂架的起重能力提升约 10%；
- 主臂加长节和压缸无级变幅的技术应用，改善副臂起重性能提升 5% 以上。
- Seven-section boom of 73m with jib of 44m. The max. boom length is 108.2m and the lifting capacity takes the lead in the industry, which is 5%-10% higher than that of the competitors in the industry. Currently, this 220-tonnage all terrain crane has the longest boom and the largest lifting capacity in class;
- Single-plate boom head leads to increased boom compactness and effective overlapping lengths between boom sections and the lifting capacity is increased by 1-3%;
- The single-engine system can reduce weight and the lifting capacity is thus increased by 10%;
- The application of boom extension and stepless elevating technology of the hydraulic cylinder can improve the lifting capacity above 5%.



## 起吊精准安全 Accurate and safe hoisting

- 采用全闭式液压系统，配备大排量泵，重载起升速度高出同类产品 20%；
- 下落速度由泵排量及油门控制，调速性好，下落速度快；过程无节流损失，发热小，变幅速度有效提升；
- 设备起升最低稳定速度(卷筒处) 0.8-1m/min，回转最低稳定速度 0.1° /s。
- Full-closed hydraulic system is adopted with large displacement pump, which contributes to 20% higher heavy load lifting speed;
- The lowering speed is controlled by pump displacement and accelerator with good speed regulation and quick lowering speed; The lifting process is with no throttling loss and small heating, which contributes to improved elevating speed;
- The min. stable lifting speed (drum) is 0.8-1m/min and the min. stable slewing speed is 0.1° /s, The min. stable slewing speed: 0.1° /s, The min. stable lifting speed (drum): 0.8-1m/min.

## 行驶转场高效安全 Safe and efficient site transfer on travel

- 长途转场移动：拆除活动支腿，55 吨行驶，最高车速可达 84km/h；
- 短途重载转场：最大可携带支腿、副卷、74t 平衡重，短距离行驶。
- Site transfer in long-distance: dismantle movable outrigger, travel under 55t with the maximum speed of 84km/h
- Site transfer of heavy-load in short-distance: travel in short-distance with the maximum equipment of outrigger, auxiliary winch and 74t counterweight.

### 轴荷监测技术 Axle load inspection technology

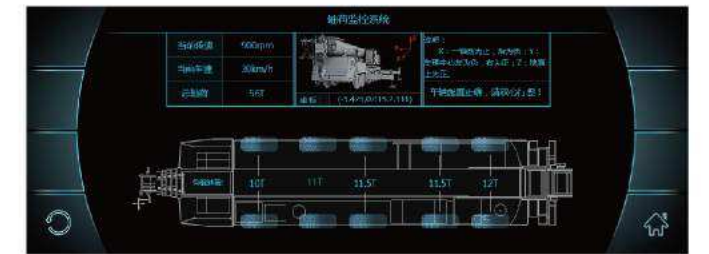
- 动态计算轴荷及车辆重心位置，实时自动匹配相对应的最高档位及车桥的驱动模式，双重保护车辆行驶安全；
- The axle load and center of gravity position is calculated dynamically with the driving model of real time and automatically matched maximum gear and axle, resulting in two-way protection for the safe travel.

### 轴荷检测技术 Axle load inspection technology

- 重载转场时，当轴荷达到极限值时即报警，实时监控整车行驶状态，提醒并协助驾驶员控制车速，防止重载转场过程中车速过高可能引起的车辆倾翻现象，保证车辆的行驶安全；
- With heavy-load site transfer, alarm will be given to monitor the travel condition in real time and to remind the driver of controlling the speed in case the crane will tilt when the axle load reaches the maximum limit. It can also maintain the safety of crane.

### 多模式驱动技术 Multi-model driving technology

- 城镇道路模式、越野道路模式、高速公路模式、重载转场模式 4 种模式可供选择，行驶工况适应性更强；
- 三驱、四驱可切换，动力强劲，经济省油；
- Four models are available to strength the acceptability of different working conditions: urban road travel, cross country travel, highway travel and heavy-load site transfer.
- The 3rd axle and 4th axle can be changed with strong power and oil consumption.



### 重载高压制动系统 Heavy-load high pressure braking system

- 匹配 24 型重载制动气室，重载行车驻车能力由 25% 提升至 35%；
- Equipped with 24-typed heavy-load braking air chamber, the grade ability on travel is improved from 25% to 35%.

### 综合制动管理平台技术 General braking and managing platform technology

- 缩短制动距离，提高制动系统寿命，公路行驶时，缩短紧急制动距离，有效避免交通事故的发生；长下坡行驶时，降低制动系统磨损，提高制动系统使用寿命。
- Braking distance can be reduced with elongation of life. Traveling on road, the emergency braking distance can be reduced to effectively avoid the traffic accident. Traveling on long and minus grade, the abrasion of braking system can be reduced with its elongation of life.

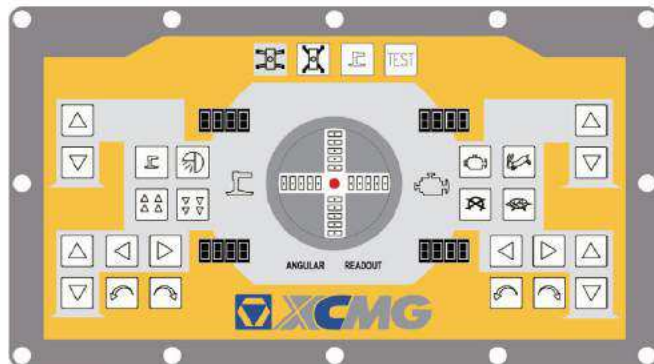






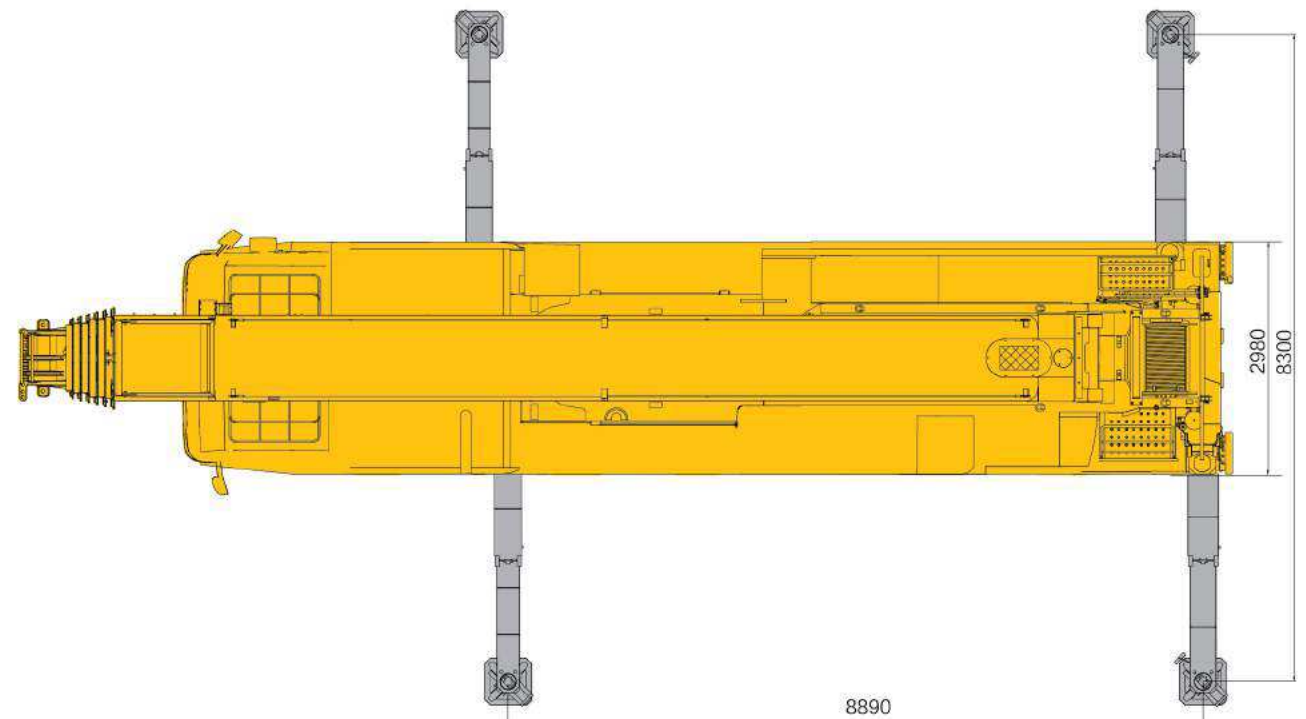
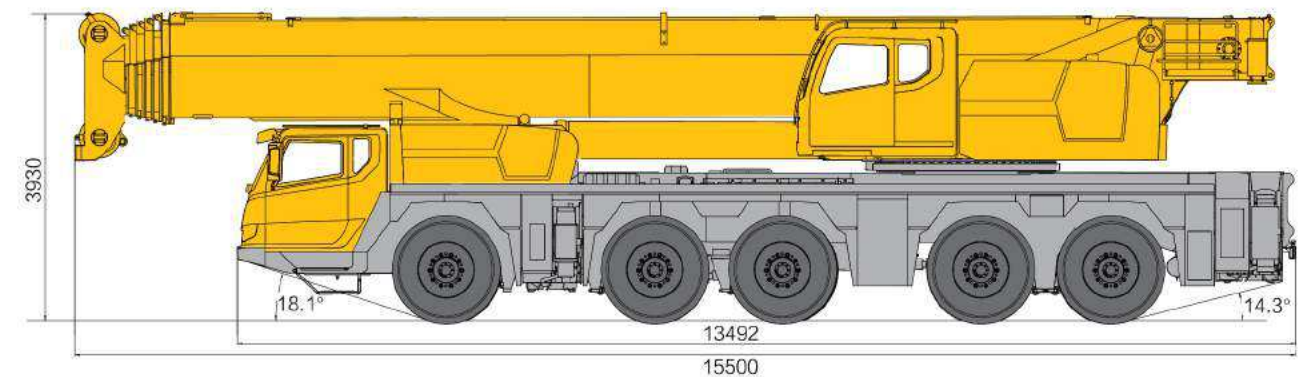
## 周到的人性化关怀 Considerate humanization care

- 徐工人机交互系统, 科技动感, 集成化总线面板, 驾驶操纵更舒适;
- 调频无线遥控装置, 不仅配置了行业独有的彩色显示屏, 而且可以实现所有吊装动作;
- 智能化水平行业领先: 工况规划技术、卷扬随动控制技术、起重变幅补偿技术;
- 采用铝合金零部件: 重量轻、防锈蚀; 底盘新型防水控制面板、全封闭线束, 可靠性提升。
- XCMG man-machine interactive system with dynamic feeling and integrated CANBus panel, contributing to more comfortable driving and manipulating experience;
- FM radio remote control device equipped with a unique colour display, not only offering many graphical and data representations, but also enabling all lifting movements;
- Leading intelligence level: automatic planning of working conditions, winch rope servo action control technology and automatic elevating compensation technology;
- Aluminum alloy parts: light weight and corrosion resistance; New water-proof chassis control panel and enclosed wire harness, providing improved reliability.



## 全新外观, 高端品质 Brand new appearance, high quality

- 整机重量 55 吨, 布置紧凑, 行驶灵活;
- 新一代外观设计, 人机工程校核开发, 遵循国际标准设计, 时尚的驾驶室与操纵室新外观, 层次感与力量感完美结合;
- 全面的人体工程学分析, 人性化细节处理, 配置可旋转折叠登高梯、吊臂防滑坠装置、折叠式扶手、桁架臂套等, 打造驾驶轻松、操纵舒适, 维护便捷的内在品质。
- Total weight of 55t, compact layout, better manoeuvre ability;
- New generation appearance design and ergonomic design, complying with international standards; Fashionable appearance of driver's cab and operator's cab, delivering the feeling of perfect combination of streamlining and strength;
- With ergonomic analysis and personalized consideration of details integrated, such as rotatable and foldable ladder, fall arrest systems, foldable handrails and lattice jib inserts, etc. a quality product is created that is convenient to maintain, easy to drive and comfortable to operate.



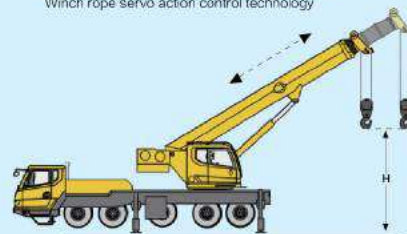
### 卷扬随动控制技术

Winch rope servo action control technology



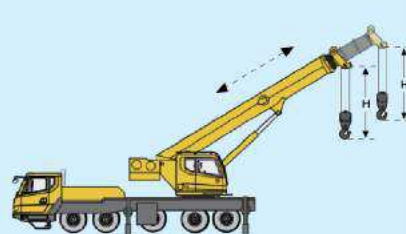
变幅地面随动模式

Winch rope servo action mode while elevating the boom: the hook height above the ground is not changed



伸缩地面随动模式

Winch rope servo action mode while telescoping the boom: the hook height above the ground is not changed



伸缩臂头随动模式

Winch rope servo action mode while telescoping the boom: the clearance between the hook and boom head is not changed

### 起重变幅补偿控制技术

Automatic elevating compensation technology



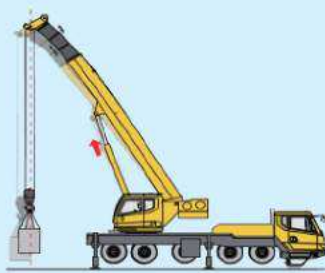
准备起重作业

Preparation of lifting operation



重物离地瞬间吊臂变形

Boom deformation while the load is clearing of the ground



变幅自动补偿垂直起升

Vertical load lifting due to automatic elevating compensation



技术参数 Technical Specifications				
行驶状态主要技术参数表Main Technical Data Table in Travel Configuration				
类别 Category	项目 Item		单位 Unit	参数 Parameter
重 量 Weight	行驶状态总质量 Dead weight in travel configuration		kg	55000
	轴 荷 Axle load	1轴 1st axle	kg	12000
		2 轴 2nd axle	kg	12000
		3 轴 3rd axle	kg	12000
		4 轴 4th axle	kg	9500
		5轴 5th axle	kg	9500
动力 Power	下车发动机型号Chassis engine model			OM460LA.E3B/3
	发动机额定功率Engine rated power		kW/(r/min)	361.1/1800
	发动机最大扭矩Max. engine torque		N.m/(r/min)	2200/1300
行驶 Travel	行驶 速度 Travel speed	最高行驶速度 Max. travel speed	km/h	84
		最低行驶速度 Min. travel speed	km/h	1 ~ 1.5
	转弯 直径 Turning diameter	最小转弯直径 Min. turning diameter	m	18.5
		臂头最小转弯直径 Min. turning diameter at boom head	m	22.5
	最小离地间隙Min. ground clearance		mm	280
	最大爬坡能力Max. grade ability		%	67

技术参数Technical Specifications				
起重机作业状态主要技术参数表Main Technical Data Table for Lifting Operation				
类别 Category	项目 Item		单位 Unit	参数 Parameter
主 要 性 能  Main performance	最大额定总起重量 Max. total rated lifting capacity		t	220
	最小额定幅度 Min. rated working radius		m	3
	转台尾部回转半径 Turning radius at turntable tail	平衡重处 At counterweight	mm	5030
		副卷处 At auxiliary winch	mm	4850
	最大起重力矩 Max. load moment	基本臂 Base boom	kN.m	7393
		最长主臂 Fully-extended boom	kN.m	2963
		最长主臂+副臂 Fully-extended boom + Jib	kN.m	1220
	起升高度 Hoist height	基本臂 Base boom	m	13.4
		最长主臂 Fully-extended boom	m	73.5
		最长主臂+副臂 Fully-extended boom + Jib	m	108
	起重臂长度 Boom length	基本臂 Base boom	m	13.4
		最长主臂 Fully-extended boom	m	73
		最长主臂+副臂 Fully-extended boom + Jib	m	108.2
工 作 速 度  Working speed	副臂安装角 Jib offset angle		°	0、20、40
	起重臂变幅时间 Boom raising time	起臂 Boom raising	s	55
	起重臂伸缩时间 Boom fully extending time	全伸/全缩 Fully-extending/fully retracting	s	600/600
	回转速度 Slewing speed		r/min	1.9
	起升速度 (单绳, 第4层) Single line, the 4 <sup>th</sup> layer	主起升机构 Main winch system	m/min	130
		副起升机构 Auxiliary winch system	m/min	130



## 起重性能表Rated lifting load tables

**XCA220主臂起重性能表，全伸支腿,平衡重74吨（表中起重重量单位t，臂长、幅度单位m）**  
Rated lifting load tables for boom, on fully-extended outriggers and counterweight of 74t (Lifting load in t, boom length and radius in m)

### 主臂长度m（Boom length m）

臂长 Boom length	13.4	18.0	18.0	18.0	22.5	22.5	22.5	22.5	22.5	27.1	27.1	27.1	27.1	31.7	31.7	31.7	31.7	31.7	31.7
3	150.0	66.9	150.0	150.0	150.0	150.0	49.9	71.3	140.0										
3.5	150.0	63.2	145.0	145.0	140.0	140.0	46.4	68.4	140.0										
4	148.0	60.1	140.0	140.0	137.9	137.5	43.6	65.4	139.2	121.0	47.9	69.4	121.0						
4.5	142.7	57.0	135.8	134.9	128.5	127.6	41.0	62.4	129.8	121.0	43.4	66.2	121.0						
5	133.6	54.4	127.2	126.3	120.3	119.5	38.6	59.7	121.6	115.4	39.9	63.6	117.9	101.0	101.0	34.4	52.1	66.7	101.0
6	118.2	49.6	113.0	112.4	106.6	105.7	34.8	55.3	107.9	102.1	35.9	59.5	104.4	100.5	95.2	31.0	47.1	62.4	96.2
7	105.5	46.0	101.6	101.0	95.6	95.0	31.8	51.4	97.1	91.3	32.7	55.7	93.9	90.0	85.3	28.2	42.4	59.0	87.8
8	94.3	42.4	92.2	91.5	86.8	85.9	29.2	48.3	88.1	82.8	29.9	52.3	85.5	81.7	77.2	25.9	38.5	55.5	80.8
9	82.8	39.8	83.1	82.2	79.3	78.4	26.8	44.9	80.7	75.6	27.4	49.4	78.2	74.8	70.7	23.8	35.4	52.5	74.4
10	71.7	37.3	73.8	73.0	71.4	70.4	25.1	41.3	73.0	69.6	25.4	46.7	72.2	68.9	64.8	22.0	32.8	50.0	68.9
12		33.7	59.3	58.4	56.9	55.9	22.0	35.9	58.6	55.8	22.1	40.9	59.1	57.6	56.0	19.1	28.5	45.4	59.5
14		30.6	48.7	48.0	46.6	45.7	19.6	31.4	48.3	45.5	19.6	36.4	48.8	47.4	45.9	16.8	25.2	40.7	49.4
16					39.0	38.1	17.5	27.9	40.7	38.1	17.4	32.6	41.3	40.0	38.5	15.1	22.5	36.6	41.8
18					33.1	32.1	16.0	25.3	34.8	32.3	15.8	29.5	35.4	34.2	32.8	13.6	20.2	33.4	36.1
20										27.7	14.3	27.1	30.8	29.7	28.2	12.4	18.4	30.7	31.5
22										23.3	13.2	25.0	27.0	26.0	24.2	11.4	16.9	28.4	27.7
24														22.4	20.6	10.4	15.5	26.0	24.6
26														19.4	17.7	9.7	14.4	23.2	21.6
28														16.9	15.2	9.0	13.4	20.6	19.0
主臂组合 Boom combination	000000	000001	001000	010000	110000	200000	000002	000011	011000	210000	000021	000111	011100	111100	211000	000022	000211	001111	011110
吊钩 Hook load	160	80	160	160	160	160	80	80	160	160	80	80	160	160	160	80	80	80	160
倍率 Ratio of line	14	7	14	14	14	14	5	7	13	11	5	6	11	9	9	3	5	6	9

### 主臂长度m（Boom length m）

臂长 Boom length	33.3	36.2	36.2	36.2	36.2	36.2	40.8	40.8	40.8	40.8	40.8	45.4	45.4	45.4	45.4	50.0	50.0	50.0	50.0
5	32.7																		
6	29.5	80.0	80.0	32.1	36.7	52.5													
7	26.8	80.0	78.6	29.5	34.1	48.2	64.3	75.6	29.0	44.8	65.2								
8	24.7	79.9	71.8	27.3	31.6	44.1	60.6	69.1	26.6	41.2	59.7	59.5	53.9	27.9	33.5				
9	22.8	73.3	66.0	25.4	29.4	40.4	57.6	63.3	24.6	38.0	55.0	56.2	49.5	26.5	30.9	48.5	45.6	44.2	26.1
10	21.1	67.4	61.3	23.6	27.3	36.8	55.2	58.4	22.9	35.3	51.1	52.0	45.8	24.6	28.8	45.0	42.5	40.9	24.6
12	18.4	58.1	52.9	20.7	23.8	31.9	50.9	50.6	20.0	30.9	44.3	45.6	39.5	21.6	25.1	39.0	36.8	35.5	21.6
14	16.2	48.0	46.3	18.5	21.1	28.0	47.0	44.6	17.7	27.4	38.8	40.4	34.8	19.2	22.3	34.6	32.3	31.1	19.2
16	14.4	40.6	38.9	16.5	18.9	24.9	41.1	39.5	15.9	24.7	34.7	36.3	30.8	17.3	20.0	31.0	28.9	27.7	17.2
18	13.1	34.9	33.3	15.0	17.1	22.5	35.4	33.9	14.4	22.4	31.4	32.8	27.7	15.7	18.1	27.9	25.9	25.0	15.7
20	11.9	30.4	28.8	13.7	15.5	20.3	30.9	29.4	13.1	20.5	28.5	29.9	25.1	14.4	16.6	25.5	23.7	22.7	14.4
22	10.8	26.6	25.2	12.6	14.2	18.5	27.3	25.7	12.1	18.9	26.0	26.4	22.9	13.2	15.3	23.5	21.6	20.7	13.2
24	9.9	23.5	21.7	11.6	13.0	17.0	24.3	22.7	11.3	17.4	23.9	23.4	21.1	12.3	14.2	21.7	19.8	19.0	12.3
26	9.2	20.6	18.7	10.8	12.1	15.6	21.6	19.8	10.5	16.3	22.2	20.8	19.2	11.5	13.3	20.1	18.4	17.6	11.4
28	8.5	18.1	16.3	10.2	11.3	14.5	19.2	17.3	9.8	15.3	19.8	18.3	16.7	10.9	12.4	18.2	17.0	16.3	10.7
30	8.0	16.0	14.2	9.4	10.5	13.4	17.0	15.2	9.2	14.4	17.6	16.2	14.6	10.2	11.7	16.1	15.4	15.2	10.1
32		14.1	12.3	8.9	9.8	12.6	15.2	13.4	8.7	13.5	15.8	14.4	12.8	9.6	11.0	14.3	13.6	13.4	9.5
34							13.6	11.8	8.2	12.8	14.2	12.8	11.2	9.1	10.4	12.7	12.0	11.8	9.0
36							12.2	10.4	7.8	12.0	12.8	11.5	9.9	8.6	9.8	11.3	10.7	10.5	8.6
38												10.2	8.7	8.2	9.3	10.1	9.4	9.2	8.2
40												9.1	7.6	7.8	8.9	9.0	8.4	8.2	7.8
42																8.0	7.4	7.2	7.4
44																7.1	6.5	6.3	7.1
主臂组合 Boom combination	000033	111110	211100	000122	000221	002111	111111	211110	000222	002211	021111	211111	222100	001222	002221	221111	222110	222200	002222
吊钩 Hook load	80	80	80	80	80	80	80	80	30	80	80	80	80	30	80	80	80	80	30
倍率 Ratio of line	3	7	7	3	4	5	6	7	3	4	6	5	5	3	3	5	4	4	3

## 起重性能表Rated lifting load tables

**XCA220主臂起重性能表，全伸支腿,平衡重74吨（表中起重重量单位t，臂长、幅度单位m）**  
Rated lifting load tables for boom, on fully-extended outriggers and counterweight of 74t (Lifting load in t, boom length and radius in m)

### 主臂长度m（Boom length m）

臂长 Boom length	53.1	54.5	54.5	54.5	54.5	54.5	59.1	59.1	59.1	59.1	59.1	63.7	63.7	63.7	68.2	69.8	71.4	73.0
10	22.4	31.2	36.0	34.0	24.7	28.8												
12	19.6	30.4	33.9	32.2	22.9	26.5	22.8	24.1	27.8	26.8	22.1	19.7	22.1	21.0				
14	17.4	27.2	30.4	28.8	20.6	23.6	21.2	22.4	27.3	26.6	20.7	19.7	21.2	20.8	19.0	17.3	16.0	15.0
16	15.7	24.4	27.2	25.6	18.6	21.2	19.9	21.0	24.5	23.9	18.7	19.2	20.3	20.8	17.8	16.5	15.5	14.8
18	14.3	22.1	24.6	23.2	16.9	19.3	18.6	19.5	22.2	21.6	17.1	17.9	19.4	19.3	16.8	16.0	14.9	14.0
20	13.0	20.1	22.3	21.0	15.6	17.6	17.2	18.3	20.3	19.8	15.7	16.4	18.0	17.6	16.1	15.7	14.5	13.4
22	12.0	18.5	20.5	19.2	14.4	16.2	15.9	17.1	18.7	18.0	14.5	15.2	16.5	16.2	14.9	14.5	13.9	13.4
24	11.1	17.1	18.9	17.7	13.4	15.1	14.8	16.1	17.4	16.7	13.4	14.1	15.3	14.9	13.7	13.3	12.8	12.1
26	10.3	15.9	17.5	16.3	12.5	14.1	13.9	15.1	16.1	15.4	12.5	13.1	14.3	13.9	12.7	12.4	11.8	11.3
28	9.7	14.9	16.3	15.2	11.6	13.2	13.0	14.2	15.0	14.4	11.6	12.1	13.3	13.0	11.8	11.4	11.0	10.7
30	9.1	13.9	15.2	14.1	10.9	12.3	12.2	13.4	14.0	13.5	10.9	11.4	12.5	12.0	11.0	10.7	10.3	10.0
32	8.5	13.1	14.3	13.2	10.3	11.6	11.4	12.7	13.2	12.7	10.3	10.7	11.7	11.3	10.4	10.1	9.7	9.4
34	8.1	12.3	12.9	12.4	9.7	10.9	10.9	11.8	12.4	11.9	9.7	10.2	11.0	10.6	9.9	9.5	9.1	8.8
36	7.7	11.6	11.5	11.1	9.3	10.3	10.3	11.2	11.8	11.1	9.3	9.6	10.5	10.0	9.3	9.0	8.6	8.4
38	7.3	11.0	10.3	9.9	8.9	9.8	9.8	10.7	10.9	10.6	8.8	9.2	9.9	9.5	8.9	8.5	8.2	7.9
40	6.9	10.0	9.2	8.8	8.4	9.4	9.4	10.2	9.8	9.5	8.4	8.8	9.4	9.1	8.5	8.1	7.8	7.5
42	6.5	9.0	8.2	7.8	8.0	8.9	9.0	9.3	8.9	8.5	8.0	8.4	9.0	8.5	8.0	7.7	7.4	7.1
44	6.3	8.1	7.3	7.0	7.7	8.5	8.6	8.4	8.0	7.7	7.7	8.0	8.4	8.1	7.6	7.3	7.0	6.8
46	6.1	7.3	6.5	6.2	7.4	8.2	8.4	7.6	7.2	6.9	7.3	7.7	7.6	7.3	7.3	6.9	6.7	6.5
48		6.5	5.8	5.4	7.1	7.8	8.0	6.8	6.4	6.1	7.1	7.4	6.9	6.6	7.0	6.7	6.4	6.2
50		5.9	5.1	4.7	6.9	7.1	7.3	6.2	5.8	5.5	6.8	7.0	6.2	5.9	6.5	6.4	6.1	5.9
52							6.7	5.5	5.2	4.8	6.7	6.4	5.6	5.3	5.8	5.9	5.9	5.7
54							6.1	5.0	4.6	4.3	6.3	5.8	5.0	4.7	5.3	5.3	5.3	5.3
56												5.3	4.5	4.2	4.7	4.8	4.8	4.8
58												4.8	4.0	3.7	4.2	4.3	4.3	4.3
60															3.8	3.9	3.9	3.9
62															3.4	3.4	3.4	3.4
64																3.0	3.0	3.0
66																		2.7
68																		2.3
主臂组合 Main boom	003333	122220	222111	222210	012222	022221	112222	221122	222112	222211	022222	122222	222122	222221	222222	332222	333322	333333
吊钩 Hook	30	80	80	80	30	30	30	30	30	30	30	30	30	30	30	30	30	30
索具 Rigging	2	3	3	3	3	3	2	2	3	3	2	2	2	2	2	2	2	2



## 起重性能表Rated lifting load tables

**XCA220主臂起重性能表, 全伸支腿, 平衡重32吨 (表中起重重量单位t, 臂长、幅度单位m)**  
 Rated lifting load tables for boom, on fully-extended outriggers and counterweight of 32t (Lifting load in t, boom length and radius in m)

主臂长度m ( Boom length m )																				
臂长 Booms length	33.3	36.2	36.2	36.2	36.2	36.2	40.8	40.8	40.8	40.8	40.8	45.4	45.4	45.4	45.4	50.0	50.0	50.0	50.0	50.0
5	32.7																			
6	29.5	60.0	80.0	32.1	36.7	52.5														
7	26.8	80.0	78.6	29.5	34.1	48.2	64.3	75.6	29.0	44.8	65.2									
8	24.7	72.0	70.0	27.3	31.6	44.1	60.6	69.1	26.6	41.2	59.7	59.5	53.9	27.9	33.5					
9	22.8	63.0	61.0	25.4	29.4	40.4	57.6	62.0	24.6	38.0	55.0	56.2	49.5	26.5	30.9	48.5	45.6	44.2	26.1	38.3
10	21.1	55.0	53.8	23.6	27.3	36.8	55.2	55.0	22.9	35.3	51.1	52.0	45.8	24.6	28.8	45.0	42.5	40.9	24.6	35.6
12	18.4	40.6	38.4	20.7	23.8	31.9	41.8	39.6	20.0	30.9	42.2	40.8	38.9	21.6	25.1	39.0	36.8	35.5	21.6	31.1
14	16.2	31.0	29.0	18.5	21.1	28.0	32.2	30.1	17.7	27.4	32.5	31.2	29.4	19.2	22.3	31.0	30.3	30.0	19.2	27.7
16	14.4	24.5	22.6	16.5	18.9	24.9	25.6	23.6	15.9	24.7	26.0	24.7	23.0	17.3	20.0	24.5	23.8	23.6	17.2	24.9
18	13.1	19.8	17.9	15.0	17.1	22.1	20.9	19.0	14.4	22.4	21.2	20.0	18.3	15.7	18.1	19.8	19.1	18.9	15.7	21.6
20	11.9	16.2	14.4	13.7	15.5	18.5	17.3	15.4	13.1	18.8	17.6	16.5	14.8	14.4	16.6	16.3	15.6	15.4	14.4	18.0
22	10.8	13.4	11.6	12.6	14.2	15.7	14.5	12.7	12.1	15.9	14.8	13.7	12.0	13.2	15.3	13.5	12.8	12.6	13.2	15.2
24	9.9	11.2	9.4	11.6	13.0	13.4	12.2	10.4	11.3	13.7	12.5	11.4	9.8	12.3	14.1	11.2	10.6	10.4	12.3	12.9
26	9.2	9.4	7.6	10.8	12.1	11.5	10.4	8.6	10.5	11.8	10.7	9.6	8.0	11.5	12.2	9.4	8.7	8.5	11.4	11.0
28	8.5	7.8	6.1	10.2	11.0	9.9	8.8	7.0	9.8	10.2	9.1	8.0	6.4	10.9	10.7	7.8	7.2	7.0	10.7	9.5
30	8.0	6.5	4.8	9.4	9.6	8.6	7.5	5.7	9.2	8.9	7.8	6.7	5.1	10.2	9.3	6.5	5.9	5.7	9.9	8.1
32		5.4	3.7	8.9	8.5	7.5	6.4	4.6	8.7	7.7	6.7	5.6	4.0	9.0	8.2	5.4	4.8	4.6	8.7	7.0
34							5.4	3.6	8.1	6.8	5.7	4.6	3.1	8.0	7.2	4.4	3.8	3.6	7.7	6.0
36							4.5	2.8	7.2	5.9	4.8	3.7	2.2	7.1	6.3	3.6	2.9	2.7	6.8	5.1
38												3.0		6.4	5.5	2.8	2.2	2.0	6.1	4.4
40												2.3		5.7	4.9	2.1	1.5		5.4	3.7
42																1.5			4.8	3.1
44																			4.2	2.5
主臂组合 Booms 组合	000033	111110	211100	000122	000221	002111	111111	211110	000222	002211	021111	211111	222100	001222	002221	221111	222110	222200	002222	022211
吊钩 Hook size	80	80	80	80	80	80	80	80	30	80	80	80	80	30	80	80	80	80	30	80
吊钩 钩头尺寸	3	7	7	3	4	5	6	7	3	4	6	5	5	3	3	5	4	4	3	4

**XCA220主臂起重性能表, 全伸支腿, 平衡重32吨 (表中起重重量单位t, 臂长、幅度单位m)**  
 Rated lifting load tables for boom, on fully-extended outriggers and counterweight of 32t (Lifting load in t, boom length and radius in m)

主臂长度m ( Boom length m )																		
臂长 Boom length	53.1	54.5	54.5	54.5	54.5	54.5	59.1	59.1	59.1	59.1	59.1	63.7	63.7	63.7	68.2	69.8	71.4	73.0
10	22.4	31.2	36.0	34.0	24.7	28.8												
12	19.6	30.4	33.9	32.2	22.9	26.5	22.8	24.1	27.8	26.8	22.1	19.7	22.1	21.0				
14	17.4	27.2	30.4	28.8	20.6	23.6	21.2	22.4	27.3	26.6	20.7	19.7	21.2	20.8	19.0	17.3	16.0	15.0
16	15.7	24.4	24.7	24.3	18.6	21.2	19.9	21.0	24.5	23.9	18.7	19.2	20.3	20.8	17.8	16.5	15.5	14.8
18	14.3	20.8	20.0	19.6	16.9	19.3	18.6	19.5	20.7	20.4	17.1	17.9	19.4	19.3	16.8	16.0	14.9	14.0
20	13.0	17.3	16.4	16.0	15.6	17.6	17.2	17.5	17.1	16.8	15.7	16.4	17.6	17.3	16.1	15.7	14.5	13.4
22	12.0	14.4	13.6	13.3	14.4	15.6	15.9	14.7	14.3	14.0	14.5	15.2	14.8	14.5	14.9	14.5	13.9	13.4
24	11.1	12.2	11.4	11.0	13.4	13.3	13.6	12.5	12.1	11.7	13.4	13.3	12.5	12.2	12.7	12.6	12.6	12.1
26	10.3	10.3	9.5	9.2	12.5	11.5	11.8	10.6	10.2	9.9	12.0	11.5	10.6	10.3	10.9	10.7	10.8	10.9
28	9.7	8.8	8.0	7.6	10.9	9.9	10.2	9.1	8.7	8.3	10.4	9.9	9.1	8.8	9.3	9.2	9.2	9.4
30	9.1	7.5	6.7	6.3	9.5	8.6	8.9	7.7	7.3	7.0	9.1	8.6	7.8	7.5	8.0	7.9	7.9	8.0
32	8.5	6.3	5.5	5.2	8.4	7.4	7.7	6.6	6.2	5.9	7.9	7.4	6.6	6.3	6.8	6.7	6.8	6.9
34	7.8	5.3	4.6	4.2	7.4	6.4	6.7	5.6	5.2	4.9	6.9	6.4	5.6	5.3	5.9	5.7	5.8	5.9
36	6.9	4.5	3.7	3.4	6.5	5.6	5.9	4.7	4.4	4.0	6.1	5.6	4.8	4.5	5.0	4.9	4.9	5.0
38	6.2	3.7	2.9	2.6	5.7	4.8	5.1	4.0	3.6	3.3	5.3	4.8	4.0	3.7	4.2	4.1	4.1	4.3
40	5.5	3.0	2.3	1.9	5.1	4.1	4.4	3.3	2.9	2.6	4.6	4.1	3.3	3.0	3.5	3.4	3.5	3.6
42	4.9	2.4	1.7		4.4	3.5	3.8	2.7	2.3	2.0	4.0	3.5	2.7	2.4	2.9	2.8	2.8	3.0
44	4.3	1.9			3.9	2.9	3.2	2.1	1.8	1.5	3.4	3.0	2.2	1.9	2.4	2.3	2.3	2.4
46	3.8				3.4	2.4	2.7	1.6			2.9	2.5	1.7		1.9	1.8	1.8	1.9
48					2.9	2.0	2.3				2.5	2.0						1.5
50					2.5	1.6	1.9				2.1	1.6						
52							1.5				1.7							
主臂组合 Boom combi	003333	122220	222111	222210	012222	022221	112222	221122	222112	222211	022222	122222	222122	222221	222222	332222	333322	333333
吊钩 Hook	30	80	80	80	30	30	30	30	30	30	30	30	30	30	30	30	30	30
吊钩 Hook	2	3	3	3	3	3	2	2	3	3	2	2	2	2	2	2	2	2

## 起重性能表Rated lifting load tables

**XCA220主臂起重性能表, 全伸支腿,平衡重0吨 (表中起重重量单位t, 臂长、幅度单位m)**  
**Rated lifting load tables for boom, on fully-extended outriggers and counterweight of 0t (Lifting load in t, boom length and radius in m)**

主臂长度m ( Boom length m )																										
臂长 Boom length	13.4	18.0	18.0	18.0	22.5	22.5	22.5	22.5	22.5	27.1	27.1	27.1	27.1	31.7	31.7	31.7	31.7	31.7	31.7	33.3	36.2	36.2	36.2	36.2	36.2	
3	150.0	66.9	150.0	150.0	150.0	150.0	49.9	71.3	140.0																	
3.5	137.0	63.2	138.0	137.0	136.0	135.0	46.4	68.4	138.0																	
4	121.0	60.1	121.0	120.0	120.0	119.0	43.6	65.4	121.0	119.0	47.9	69.4	121.0													
4.5	107.0	57.0	108.0	107.0	106.0	106.0	41.0	62.4	108.0	106.0	43.4	66.2	109.0													
5	96.0	54.4	97.0	96.0	95.0	94.0	38.6	59.7	97.0	94.0	39.9	63.6	98.0	97.0	95.0	34.4	52.1	66.7	99.0	32.7						
6	78.0	49.6	78.0	77.0	77.0	76.0	34.8	55.3	78.0	76.0	35.9	59.5	79.0	78.0	77.0	31.0	47.1	62.4	80.0	29.5	79.0	78.0	32.1	36.7	52.5	
7	56.2	46.0	57.2	55.7	54.3	52.4	31.8	51.4	57.0	53.0	32.7	55.7	58.8	57.3	54.4	28.2	42.4	59.0	60.6	26.8	59.1	56.0	29.5	34.1	48.2	
8	41.1	42.4	42.0	40.6	39.5	37.8	29.2	46.9	41.8	38.3	29.9	47.6	43.4	42.1	39.5	25.9	38.5	47.4	45.0	24.7	43.7	41.0	27.3	31.6	44.1	
9	31.5	34.9	32.4	31.1	30.0	28.5	26.8	36.8	32.2	29.0	27.4	37.5	33.7	32.5	30.1	23.8	35.4	37.3	35.1	22.8	34.0	31.4	25.4	29.4	37.0	
10	24.9	28.1	25.8	24.6	23.6	22.1	25.1	29.9	25.6	22.6	25.4	30.5	26.9	25.9	23.6	22.0	30.7	30.3	28.3	21.1	27.2	24.9	23.6	27.3	30.1	
12		19.3	17.2	16.1	15.2	13.9	21.1	21.0	17.0	14.3	21.8	21.6	18.3	17.3	15.2	19.1	21.8	21.4	19.6	18.4	18.5	16.4	20.7	22.4	21.2	
14		13.9	11.9	10.8	9.8	8.4	15.6	15.5	11.8	8.9	16.2	16.0	12.9	12.0	9.9	16.8	16.2	15.9	14.1	16.2	13.2	11.1	17.6	16.8	15.6	
16					5.7	4.4	11.9	11.8	7.7	4.9	12.5	12.3	9.0	8.0	5.8	13.5	12.4	12.2	10.3	13.7	9.3	7.0	13.8	13.0	11.9	
18					2.9	1.6	8.8	8.7	4.8	2.1	9.5	9.3	6.0	5.1	3.0	10.6	9.5	9.2	7.3	10.8	6.3	4.2	10.9	10.1	8.9	
20											7.2	7.0	3.9	3.0		8.3	7.2	6.9	5.1	8.5	4.1	2.1	8.6	7.8	6.6	
22											5.5	5.3	2.3			6.5	5.5	5.2	3.4	6.7	2.5		6.8	6.1	4.9	
24																5.1	4.1	3.8	2.1	5.3			5.4	4.7	3.6	
26																4.0	3.0	2.7		4.2			4.3	3.6	2.5	
28																3.1	2.1	1.8		3.3			3.4	2.7	1.6	
30																				2.5			2.6	1.9		
32																							2.0			
主臂长度 Boom length	000000000001	001000	010000	110000	200000	000002	000011	011000	210000	000021	000111	011100	111100	211000	000022	000211	001111	011110	000033	111110	211100	000122	000221	002111		
臂长 Boom length	160	80	160	160	160	160	80	80	160	160	80	80	160	160	160	80	80	160	80	80	80	80	80	80		
	14	7	14	14	14	14	5	7	13	11	5	6	11	9	9	3	5	6	9	3	7	7	3	4	5	

**XCA220主臂起重性能表, 全伸支腿, 平衡重0吨 (表中起重重量单位t, 臂长、幅度单位m)**  
 Rated lifting load tables for boom, on fully-extended outriggers and counterweight of 0t (Lifting load in t, boom length and radius in m)

主臂长度m ( Boom length m )																								
臂长 Boom length	40.8	40.8	40.8	40.8	40.8	45.4	45.4	45.4	45.4	50.0	50.0	50.0	50.0	50.0	53.1	54.5	54.5	54.5	59.1	59.1	59.1	63.7	63.7	
7	60.9	57.7	29.0	44.8	61.4																			
8	45.3	42.5	26.6	41.2	45.8	44.0	41.5	27.9	33.5															
9	35.4	32.8	24.6	37.4	35.8	34.2	31.9	26.5	30.9	34.0	33.0	32.7	26.1	36.3										
10	28.6	26.2	22.9	30.5	29.0	27.5	25.3	24.6	28.8	27.2	26.4	26.1	24.6	29.4	22.4	28.5	24.7	28.8						
12	19.8	17.6	20.0	21.5	20.1	18.8	16.8	21.6	22.1	18.6	17.8	17.5	21.6	20.6	19.6	19.7	22.3	21.1	21.5	20.1	21.8	19.7	20.1	
14	14.3	12.3	17.6	16.0	14.7	13.4	11.6	17.5	16.5	13.2	12.4	12.2	17.1	15.1	17.3	14.3	16.7	15.6	16.0	14.6	16.2	15.6	14.6	
16	10.5	8.3	13.8	12.2	10.9	9.5	7.5	13.7	12.7	9.3	8.5	8.2	13.3	11.4	13.4	10.5	13.0	11.9	12.2	10.8	12.4	11.9	10.9	
18	7.5	5.4	10.9	9.2	7.9	6.5	4.6	10.8	9.8	6.3	5.5	5.3	10.4	8.3	10.5	7.5	10.0	8.8	9.2	7.8	9.5	8.8	7.8	
20	5.3	3.2	8.6	6.9	5.7	4.4	2.5	8.4	7.5	4.2	3.4	3.2	8.1	6.1	8.2	5.3	7.7	6.6	6.9	5.6	7.2	6.6	5.6	
22	3.6	1.6	6.8	5.2	4.0	2.7		6.7	5.7	2.5	1.8	1.6	6.3	4.4	6.5	3.6	6.0	4.9	5.2	3.9	5.4	4.9	3.9	
24	2.3		5.4	3.9	2.7			5.3	4.4				5.0	3.0	5.1	2.3	4.6	3.5	3.8	2.6	4.1	3.5	2.6	
26			4.3	2.8	1.6			4.2	3.3				3.8	2.0	4.0		3.5	2.4	2.8	1.5	3.0	2.4	1.5	
28			3.4	1.9				3.2	2.4				2.9		3.0		2.6	1.5	1.9		2.1	1.5		
30			2.6					2.5	1.6				2.2		2.3		1.8							
32			1.9					1.8					1.5		1.6									
主臂长度m Boom length	111111	211110	000222	002211	021111	211111	222100	001222	002221	221111	222110	222200	002222	022211	003333	122220	012222	022221	112222	221122	022222	122222	222122	
吊钩 Hook	80	80	30	80	80	80	80	30	80	80	80	80	30	80	30	80	30	30	30	30	30	30	30	
滑轮 Sheave	6	7	3	4	6	5	5	3	3	5	4	4	3	4	2	3	3	3	2	2	2	2	2	



# 起重性能表Rated lifting load tables

**XCA220副臂臂起重性能表，全伸支腿,平衡重74吨（表中起重重量单位t，臂长、幅度单位m）**  
Rated lifting load tables for jib, on fully-extended outriggers and counterweight of 74t (Lifting load in t, boom length and radius in m)

0度安装角 副臂长度24m0°（0° offset angle, jib length 24m）					
R/L	59.1+8	59.1+8	63.7+8	63.7+8	68.2+8
16	4.6	5.1			
18	4.6	5.0	4.3	4.6	
20	4.5	5.0	4.2	4.5	4.0
22	4.4	5.0	4.2	4.5	4.0
24	4.4	4.9	4.1	4.4	3.9
26	4.3	4.8	4.1	4.4	3.9
28	4.2	4.7	4.0	4.3	3.8
30	4.1	4.6	3.9	4.2	3.8
32	4.0	4.5	3.9	4.1	3.7
34	3.9	4.4	3.8	4.0	3.6
36	3.7	4.3	3.7	4.0	3.6
38	3.6	4.2	3.5	3.9	3.5
40	3.5	4.1	3.4	3.8	3.4
42	3.3	4.0	3.3	3.8	3.3
44	3.2	3.9	3.2	3.7	3.2
46	3.1	3.8	3.1	3.6	3.1
48	3.0	3.7	3.0	3.5	3.0
50	2.9	3.6	2.9	3.5	2.9
52	2.8	3.5	2.8	3.3	2.8
54	2.7	3.4	2.7	3.1	2.6
56	2.6	3.3	2.6	2.9	2.4
58	2.5	3.2	2.5	2.7	2.2
60	2.4	3.1	2.4	2.5	2.1
62	2.3	2.9	2.2	2.3	1.9
64	2.2	2.7	2.0	2.2	1.7
66	2.1	2.6	1.9	2.0	1.6
68	1.9	2.4	1.8	1.9	1.5
70	1.8	2.1	1.6	1.7	1.3
72	1.7	1.8	1.4	1.6	1.2
74	1.6	1.5	1.3	1.4	1.1
76	1.5	1.2	1.2	1.3	
78	1.4	1.0		1.1	
80	1.3				
82	1.3				
84	1.2				
主臂额定 RBC (t) rated	112222	222211	122222	222221	222222

**XCA220副臂臂起重性能表，全伸支腿,平衡重52吨（表中起重重量单位t，臂长、幅度单位m）**  
Rated lifting load tables for jib, on fully-extended outriggers and counterweight of 52t (Lifting load in t, boom length and radius in m)

0度安装角 副臂长度24m（0° offset angle, jib length 24m）					
R/L	59.1+8	59.1+8	63.7+8	63.7+8	68.2+8
16	4.6	5.1			
18	4.6	5.0	4.3	4.6	
20	4.5	5.0	4.2	4.5	4.0
22	4.4	5.0	4.2	4.5	4.0
24	4.4	4.9	4.1	4.4	3.9
26	4.3	4.8	4.1	4.4	3.9
28	4.2	4.7	4.0	4.3	3.8
30	4.1	4.6	3.9	4.2	3.8
32	4.0	4.5	3.9	4.1	3.7
34	3.9	4.4	3.8	4.0	3.6
36	3.7	4.3	3.7	4.0	3.6
38	3.6	4.2	3.5	3.9	3.5
40	3.5	4.1	3.4	3.8	3.4
42	3.3	4.0	3.3	3.8	3.3
44	3.2	3.9	3.2	3.7	3.2
46	3.1	3.8	3.1	3.6	3.1
48	3.0	3.7	3.0	3.5	3.0
50	2.9	3.6	2.9	3.5	2.9
52	2.8	3.2	2.8	3.3	2.8
54	2.7	2.7	2.7	2.8	2.6
56	2.6	2.3	2.6	2.4	2.4
58	2.5	1.9	2.5	2.0	2.2
60	2.4	1.6	2.4	1.7	1.8
62	2.3	1.3	2.0	1.3	1.5
64	2.1		1.7	1.0	1.2
66	1.8		1.4		
68	1.5		1.2		
70	1.3				
72	1.0				
主臂额定 RBC (t) rated	112222	222211	122222	222221	222222

# 起重性能表Rated lifting load tables

**XCA220副臂臂起重性能表，全伸支腿,平衡重42吨（表中起重重量单位t，臂长、幅度单位m）**  
Rated lifting load tables for jib, on fully-extended outriggers and counterweight of 42t (Lifting load in t, boom length and radius in m)

0度安装角 副臂长度24m（0° offset angle, jib length 24m）					
R/L	59.1+8	59.1+8	63.7+8	63.7+8	68.2+8
16	4.6	5.1			
18	4.6	5.0	4.3	4.6	
20	4.5	5.0	4.2	4.5	4.0
22	4.4	5.0	4.2	4.5	4.0
24	4.4	4.9	4.1	4.4	3.9
26	4.3	4.8	4.1	4.4	3.9
28	4.2	4.7	4.0	4.3	3.8
30	4.1	4.6	3.9	4.2	3.8
32	4.0	4.5	3.9	4.1	3.7
34	3.9	4.4	3.8	4.0	3.6
36	3.7	4.3	3.7	4.0	3.6
38	3.6	4.2	3.5	3.9	3.5
40	3.5	4.1	3.4	3.8	3.4
42	3.3	4.0	3.3	3.8	3.3
44	3.2	3.9	3.2	3.7	3.2
46	3.1	3.4	3.1	3.5	3.1
48	3.0	2.9	3.0	3.0	3.0
50	2.9	2.4	2.9	2.5	2.7
52	2.8	2.0	2.8	2.1	2.2
54	2.7	1.6	2.4	1.7	1.8
56	2.4	1.2	2.0	1.3	1.5
58	2.0		1.7		1.1
60	1.7		1.3		
62	1.4		1.0		
64	1.1				
66					
68					
70					
72					
74					
76					
78					
80					
82					
84					
主臂额定 RBC (t) rated	112222	222211	122222	222221	222222

**XCA220副臂臂起重性能表，全伸支腿,平衡重32吨（表中起重重量单位t，臂长、幅度单位m）**  
Rated lifting load tables for jib, on fully-extended outriggers and counterweight of 32t (Lifting load in t, boom length and radius in m)

0度安装角 副臂长度24m（0° offset angle, jib length 24m）					
R/L	59.1+8	59.1+8	63.7+8	63.7+8	68.2+8
16	4.6	5.1			
18	4.6	5.0	4.3	4.6	
20	4.5	5.0	4.2	4.5	4.0
22	4.4	5.0	4.2	4.5	4.0
24	4.4	4.9	4.1	4.4	3.9
26	4.3	4.8	4.1	4.4	3.9
28	4.2	4.7	4.0	4.3	3.8
30	4.1	4.6	3.9	4.2	3.8
32	4.0	4.5	3.9	4.1	3.7
34	3.9	4.4	3.8	4.0	3.6
36	3.7	4.3	3.7	4.0	3.6
38	3.6	4.2	3.5	3.9	3.5
40	3.5	3.7	3.4	3.8	3.4
42	3.3	3.1	3.3	3.2	3.3
44	3.2	2.5	3.2	2.6	2.8
46	3.1	2.0	2.8	2.1	2.3
48	2.7	1.6	2.4	1.7	1.8
50	2.3	1.2	2.0	1.2	1.4
52	1.9		1.6		1.0
54	1.6		1.2		
56	1.2				
58					
60					
62					
64					
主臂额定 RBC (t) rated	112222	222211	122222	222221	222222



**XCA220 全地面起重机**



起重性能表Rated lifting load tables

XCA220副臂臂起重性能表，全伸支腿,平衡重74吨（表中起重重量单位t，臂长、幅度单位m）  
Rated lifting load tables for jib, on fully-extended outriggers and counterweight of 74t (Lifting load in t, boom length and radius in m)

0度安装角 副臂长度28m（ 0° offset angle, jib length 28m ）					
R/L	59.1+8	59.1+8	63.7+8	63.7+8	68.2+8
18	3.8	4.3			
20	3.8	4.2	3.5	3.8	
22	3.7	4.1	3.5	3.7	3.3
24	3.6	4.0	3.4	3.7	3.3
26	3.6	4.0	3.4	3.6	3.2
28	3.5	3.9	3.4	3.6	3.2
30	3.5	3.8	3.3	3.5	3.2
32	3.4	3.7	3.3	3.5	3.1
34	3.4	3.7	3.2	3.4	3.1
36	3.3	3.6	3.2	3.4	3.0
38	3.2	3.6	3.1	3.3	3.0
40	3.1	3.5	3.0	3.3	3.0
42	3.0	3.4	2.9	3.2	2.9
44	2.9	3.4	2.8	3.2	2.8
46	2.8	3.3	2.7	3.1	2.7
48	2.6	3.2	2.6	3.0	2.6
50	2.5	3.2	2.5	3.0	2.6
52	2.4	3.1	2.5	2.9	2.5
54	2.4	3.0	2.4	2.9	2.4
56	2.3	2.9	2.3	2.8	2.3
58	2.2	2.8	2.2	2.6	2.2
60	2.1	2.7	2.1	2.4	2.0
62	2.0	2.6	2.1	2.3	1.8
64	1.9	2.5	2.0	2.1	1.7
66	1.9	2.4	1.9	2.0	1.6
68	1.8	2.4	1.9	1.8	1.4
70	1.7	2.1	1.8	1.7	1.3
72	1.6	1.9	1.6	1.5	1.1
74	1.5	1.6	1.5	1.4	1.1
76	1.4	1.3	1.4	1.3	
78	1.3	1.1	1.3	1.1	
80	1.2		1.2		
82	1.1		1.1		
84	1.1		1.0		
主臂额定 Boom capacity	112222	222211	122222	222221	222222

XCA220副臂臂起重性能表，全伸支腿,平衡重52吨（表中起重重量单位t，臂长、幅度单位m）  
Rated lifting load tables for jib, on fully-extended outriggers and counterweight of 52t (Lifting load in t, boom length and radius in m)

0度安装角 副臂长度28m（ 0° offset angle, jib length 28m ）					
R/L	59.1+8	59.1+8	63.7+8	63.7+8	68.2+8
18	3.8	4.3			
20	3.8	4.2	3.5	3.8	
22	3.7	4.1	3.5	3.7	3.3
24	3.6	4.0	3.4	3.7	3.3
26	3.6	4.0	3.4	3.6	3.2
28	3.5	3.9	3.4	3.6	3.2
30	3.5	3.8	3.3	3.5	3.2
32	3.4	3.7	3.3	3.5	3.1
34	3.4	3.7	3.2	3.4	3.1
36	3.3	3.6	3.2	3.4	3.0
38	3.2	3.6	3.1	3.3	3.0
40	3.1	3.5	3.0	3.3	3.0
42	3.0	3.4	2.9	3.2	2.9
44	2.9	3.4	2.8	3.2	2.8
46	2.8	3.3	2.7	3.1	2.7
48	2.6	3.2	2.6	3.0	2.6
50	2.5	3.2	2.5	3.0	2.6
52	2.4	3.1	2.5	2.9	2.5
54	2.4	2.8	2.4	2.9	2.4
56	2.3	2.4	2.3	2.5	2.3
58	2.2	2.0	2.2	2.1	2.2
60	2.1	1.6	2.1	1.7	1.9
62	2.0	1.3	2.1	1.4	1.5
64	1.9	1.0	1.7	1.1	1.2
66	1.8		1.4		
68	1.5		1.2		
70	1.3				
72	1.0				
主臂额定 Boom capacity	112222	222211	122222	222221	222222

起重性能表Rated lifting load tables

XCA220副臂臂起重性能表，全伸支腿,平衡重42吨（表中起重重量单位t，臂长、幅度单位m）  
Rated lifting load tables for jib, on fully-extended outriggers and counterweight of 42t (Lifting load in t, boom length and radius in m)

0度安装角 副臂长度28m（ 0° offset angle, jib length 28m ）					
R/L	59.1+8	59.1+8	63.7+8	63.7+8	68.2+8
18	3.8	4.3			
20	3.8	4.2	3.5	3.8	
22	3.7	4.1	3.5	3.7	3.3
24	3.6	4.0	3.4	3.7	3.3
26	3.6	4.0	3.4	3.6	3.2
28	3.5	3.9	3.4	3.6	3.2
30	3.5	3.8	3.3	3.5	3.2
32	3.4	3.7	3.3	3.5	3.1
34	3.4	3.7	3.2	3.4	3.1
36	3.3	3.6	3.2	3.4	3.0
38	3.2	3.6	3.1	3.3	3.0
40	3.1	3.5	3.0	3.3	3.0
42	3.0	3.4	2.9	3.2	2.9
44	2.9	3.4	2.8	3.2	2.8
46	2.8	3.3	2.7	3.1	2.7
48	2.6	3.0	2.6	3.0	2.6
50	2.5	2.5	2.5	2.6	2.6
52	2.4	2.1	2.5	2.1	2.3
54	2.4	1.6	2.4	1.7	1.9
56	2.3	1.3	2.0	1.3	1.5
58	2.0		1.7	1.0	1.1
60	1.7		1.4		
62	1.4		1.1		
64	1.1				
主臂额定 Boom capacity	112222	222211	122222	222221	222222

XCA220副臂臂起重性能表，全伸支腿,平衡重32吨（表中起重重量单位t，臂长、幅度单位m）  
Rated lifting load tables for jib, on fully-extended outriggers and counterweight of 32t (Lifting load in t, boom length and radius in m)

0度安装角 副臂长度28m（ 0° offset angle, jib length 28m ）					
R/L	59.1+8	59.1+8	63.7+8	63.7+8	68.2+8
18	3.8	4.3			
20	3.8	4.2	3.5	3.8	
22	3.7	4.1	3.5	3.7	3.3
24	3.6	4.0	3.4	3.7	3.3
26	3.6	4.0	3.4	3.6	3.2
28	3.5	3.9	3.4	3.6	3.2
30	3.5	3.8	3.3	3.5	3.2
32	3.4	3.7	3.3	3.5	3.1
34	3.4	3.7	3.2	3.4	3.1
36	3.3	3.6	3.2	3.4	3.0
38	3.2	3.6	3.1	3.3	3.0
40	3.1	3.5	3.0	3.3	3.0
42	3.0	3.2	2.9	3.2	2.9
44	2.9	2.6	2.8	2.7	2.8
46	2.8	2.1	2.7	2.2	2.3
48	2.6	1.7	2.4	1.7	1.9
50	2.3	1.2	2.0	1.3	1.4
52	2.0		1.6		1.1
54	1.6		1.2		
56	1.3				
主臂额定 Boom capacity	112222	222211	122222	222221	222222



起重性能表Rated lifting load tables

XCA220副臂臂起重性能表，全伸支腿,平衡重22吨（表中起重量单位t，臂长、幅度单位m）  
Rated lifting load tables for jib, on fully-extended outriggers and counterweight of 22t (Lifting load in t, boom length and radius in m)

0度安装角 副臂长度28m（0° offset angle, jib length 28m）					
R/L	59.1+8	59.1+8	63.7+8	63.7+8	68.2+8
18	3.8	4.3			
20	3.8	4.2	3.5	3.8	
22	3.7	4.1	3.5	3.7	3.3
24	3.6	4.0	3.4	3.7	3.3
26	3.6	4.0	3.4	3.6	3.2
28	3.5	3.9	3.4	3.6	3.2
30	3.5	3.8	3.3	3.5	3.2
32	3.4	3.7	3.3	3.5	3.1
34	3.4	3.7	3.2	3.4	3.1
36	3.3	3.5	3.2	3.4	3.0
38	3.2	2.8	3.1	2.9	3.0
40	3.1	2.2	3.0	2.3	2.4
42	2.8	1.7	2.4	1.7	1.9
44	2.3	1.2	1.9	1.2	1.4
46	1.9		1.5		
48	1.5		1.1		
50	1.1				
主臂组合 Boom combination	112222	222211	122222	222221	222222

起重性能表Rated lifting load tables

XCA220副臂臂起重性能表，全伸支腿,平衡重22吨（表中起重量单位t，臂长、幅度单位m）  
Rated lifting load tables for jib, on fully-extended outriggers and counterweight of 22t (Lifting load in t, boom length and radius in m)

0度安装角 副臂长度32m（0° offset angle, jib length 32m）					
R/L	59.1+8	59.1+8	63.7+8	63.7+8	68.2+8
20	3.4	3.8			
22	3.4	3.7	3.2	3.4	
24	3.3	3.7	3.1	3.3	3.0
26	3.2	3.6	3.1	3.3	2.9
28	3.2	3.5	3.0	3.2	2.9
30	3.1	3.5	3.0	3.2	2.8
32	3.1	3.4	2.9	3.1	2.8
34	3.0	3.3	2.9	3.1	2.8
36	3.0	3.3	2.9	3.0	2.7
38	2.9	2.9	2.8	3.0	2.7
40	2.9	2.3	2.8	2.4	2.5
42	2.8	1.8	2.5	1.8	2.0
44	2.4	1.3	2.0	1.4	1.5
46	1.9		1.6		1.0
48	1.5		1.2		
50	1.2				
主臂组合 Boom combination	112222	222211	122222	222221	222222

XCA220副臂臂起重性能表，全伸支腿,平衡重74吨（表中起重量单位t，臂长、幅度单位m）  
Rated lifting load tables for jib, on fully-extended outriggers and counterweight of 74t (Lifting load in t, boom length and radius in m)

0度安装角 副臂长度32m（0° offset angle, jib length 32m）					
R/L	59.1+8	59.1+8	63.7+8	63.7+8	68.2+8
20	3.4	3.8			
22	3.4	3.7	3.2	3.4	
24	3.3	3.7	3.1	3.3	3.0
26	3.2	3.6	3.1	3.3	2.9
28	3.2	3.5	3.0	3.2	2.9
30	3.1	3.5	3.0	3.2	2.8
32	3.1	3.4	2.9	3.1	2.8
34	3.0	3.3	2.9	3.1	2.8
36	3.0	3.3	2.9	3.0	2.7
38	2.9	3.2	2.8	3.0	2.7
40	2.9	3.1	2.8	2.9	2.6
42	2.8	3.1	2.7	2.9	2.6
44	2.8	3.0	2.7	2.8	2.6
46	2.7	3.0	2.6	2.8	2.6
48	2.6	2.9	2.6	2.7	2.5
50	2.5	2.8	2.5	2.7	2.3
52	2.4	2.8	2.3	2.6	2.3
54	2.3	2.7	2.2	2.5	2.3
56	2.2	2.7	2.1	2.4	2.2
58	2.1	2.5	2.0	2.3	2.1
60	2.0	2.3	2.0	2.3	2.0
62	1.8	2.2	1.9	2.2	1.8
64	1.8	2.2	1.9	2.1	1.6
66	1.7	2.1	1.8	2.1	1.4
68	1.7	2.1	1.7	1.9	1.2
70	1.7	2.0	1.6	1.7	1.0
72	1.6	1.9	1.5	1.6	
74	1.5	1.7	1.3	1.4	
76	1.4	1.4	1.1	1.2	
78	1.3	1.2		1.0	
80	1.2				
82	1.1				
84					
主臂组合 Boom combination	112222	222211	122222	222221	222222

XCA220副臂臂起重性能表，全伸支腿,平衡重74吨（表中起重量单位t，臂长、幅度单位m）  
Rated lifting load tables for jib, on fully-extended outriggers and counterweight of 74t (Lifting load in t, boom length and radius in m)

0度安装角 副臂长度36m（0° offset angle, jib length 36m）					
R/L	59.1+8	59.1+8	63.7+8	63.7+8	
22	2.8	3.1			
24	2.7	3.1	2.6	2.8	
26	2.7	3.0	2.5	2.7	
28	2.7	2.9	2.5	2.7	
30	2.6	2.9	2.5	2.6	
32	2.6	2.8	2.4	2.6	
34	2.5	2.8	2.4	2.5	
36	2.5	2.7	2.4	2.5	
38	2.4	2.6	2.3	2.5	
40	2.4	2.6	2.3	2.4	
42	2.3	2.5	2.2	2.4	
44	2.3	2.5	2.2	2.3	
46	2.3	2.4	2.2	2.3	
48	2.2	2.4	2.1	2.2	
50	2.2	2.3	2.1	2.2	
52	2.1	2.3	2.1	2.2	
54	2.0	2.3	2.0	2.1	
56	1.9	2.2	1.9	2.1	
58	1.8	2.2	1.9	2.1	
60	1.8	2.1	1.8	2.0	
62	1.7	2.0	1.7	1.9	
64	1.6	1.8	1.7	1.8	
66	1.6	1.8	1.6	1.7	
68	1.5	1.8	1.5	1.7	
70	1.4	1.7	1.5	1.6	
72	1.4	1.7	1.4	1.5	
74	1.3	1.6	1.4	1.4	
76	1.2	1.5	1.3	1.3	
78		1.2		1.2	
80		1.0		1.0	
主臂组合 Boom combination	112222	222211	122222	222221	



XCA220 全地面起重机