



Made in Germany



WT 300 *e.tronic*

Product Information

Courtesy of Crane.Market

WT 300 e.tronic load table in 4-rope mode with 2-/4-rope hook block (in 4-rope mode, loads of max. 16.0 t are possible).

Radius [m]		25.0	30.0	32.5	35.0	37.5	40.0	42.5	45.0	47.5	50.0	52.5	55.0	57.5	60.0	62.5	65.0	67.5	70.0
Jib length [m]	70.0 3.0 – 20,1	12.6	10.3	9.4	8.6	7.9	7.4	6.8	6.4	6.0	5.6	5.3	5.0	4.7	4.4	4.2	4.0	3.8	3.6
	67.5 3.0 – 20,6	12.9	10.5	9.6	8.8	8.1	7.5	7.0	6.6	6.1	5.8	5.4	5.1	4.8	4.6	4.3	4.1	3.9	
	65.0 3.0 – 20,9	13.2	10.7	9.8	9.0	8.3	7.7	7.2	6.7	6.3	5.9	5.5	5.2	4.9	4.7	4.4	4.2		
	62.5 3.0 – 21,2	13.4	10.9	9.9	9.1	8.4	7.8	7.3	6.8	6.4	6.0	5.6	5.3	5.0	4.7	4.5			
	60.0 3.0 – 21,7	13.7	11.2	10.2	9.4	8.7	8.1	7.5	7.0	6.6	6.2	5.8	5.5	5.2	4.9				
	57.5 3.0 – 22,1	14.0	11.4	10.5	9.6	8.9	8.2	7.7	7.2	6.7	6.3	5.9	5.6	5.3					
	55.0 3.0 – 22,4	14.2	11.6	10.6	9.8	9.0	8.4	7.8	7.3	6.8	6.4	6.0	5.7						
	52.5 3.0 – 22,6	14.4	11.7	10.7	9.9	9.1	8.4	7.9	7.4	6.9	6.5	6.1							
	50.0 3.0 – 23,3	14.8	12.1	11.1	10.2	9.4	8.7	8.1	7.6	7.1	6.7								
	47.5 3.0 – 23,5	14.9	12.2	11.2	10.3	9.5	8.8	8.2	7.7	7.2									
	45.0 3.0 – 23,8	15.2	12.4	11.3	10.4	9.6	9.0	8.3	7.8										
	42.5 3.0 – 23,9	15.3	12.5	11.4	10.5	9.7	9.0	8.4											
	40.0 3.0 – 24,1	15.4	12.6	11.5	10.6	9.8	9.1												
	37.5 3.0 – 24,4	15.6	12.7	11.6	10.7	9.9													
	35.0 3.0 – 24,5	15.7	12.8	11.7	10.8														
	32.5 3.0 – 24,7	15.8	12.9	11.8															
	30.0 3.0 – 24,8	15.8	12.9																
	25.0 3.0 – 25,0	16.0																	

The loads relate to 40 m hook travel. In case of larger hook travels, they are reduced by the hoist rope weight (in 4-rope mode = 5.2 kg/m hook travel).

WT 300 e.tronic load table in 2-rope mode with 2-/4-rope hook block (in 2-rope mode, loads of max. 8.0 t are possible).

Radius [m]		25.0	30.0	32.5	35.0	37.5	40.0	42.5	45.0	47.5	50.0	52.5	55.0	57.5	60.0	62.5	65.0	67.5	70.0
Jib length [m]	70.0 3.0 – 36,9	8.0	8.0	8.0	8.0	7.9	7.3	6.8	6.4	6.0	5.6	5.3	5.0	4.7	4.5	4.3	4.1	3.9	3.7
	67.5 3.0 – 37,8	8.0	8.0	8.0	8.0	8.0	7.5	7.0	6.6	6.1	5.8	5.5	5.2	4.9	4.6	4.4	4.2	4.0	
	65.0 3.0 – 38,6	8.0	8.0	8.0	8.0	8.0	7.7	7.2	6.7	6.3	5.9	5.6	5.3	5.0	4.8	4.5	4.3		
	62.5 3.0 – 39,1	8.0	8.0	8.0	8.0	8.0	7.8	7.3	6.8	6.4	6.0	5.7	5.4	5.1	4.8	4.6			
	60.0 3.0 – 40,2	8.0	8.0	8.0	8.0	8.0	8.0	7.5	7.0	6.6	6.2	5.9	5.6	5.3	5.0				
	57.5 3.0 – 41,1	8.0	8.0	8.0	8.0	8.0	8.0	7.7	7.2	6.8	6.4	6.0	5.7	5.4					
	55.0 3.0 – 41,7	8.0	8.0	8.0	8.0	8.0	8.0	7.8	7.3	7.0	6.5	6.1	5.8						
	52.5 3.0 – 42,1	8.0	8.0	8.0	8.0	8.0	8.0	7.9	7.4	7.1	6.6	6.2							
	50.0 3.0 – 43,4	8.0	8.0	8.0	8.0	8.0	8.0	8.0	7.7	7.2	6.8								
	47.5 3.0 – 43,8	8.0	8.0	8.0	8.0	8.0	8.0	8.0	7.8	7.3									
	45.0 3.0 – 44,8	8.0	8.0	8.0	8.0	8.0	8.0	8.0	7.9										
	42.5 3.0 – 42,5	8.0	8.0	8.0	8.0	8.0	8.0	8.0											
	40.0 3.0 – 40,0	8.0	8.0	8.0	8.0	8.0	8.0												
	37.5 3.0 – 37,5	8.0	8.0	8.0	8.0	8.0													
	35.0 3.0 – 35,0	8.0	8.0	8.0	8.0														
	32.5 3.0 – 32,5	8.0	8.0	8.0															
	30.0 3.0 – 30,0	8.0	8.0																
	25.0 3.0 – 25,0	8.0																	

The loads relate to 40 m hook travel. In case of larger hook travels, they are reduced by the hoist rope weight (in 2-rope mode = 2.6 kg/m hook travel).

The WT 300 e.tronic tower crane. Flat top. Steadfast. And flexible.

Transport. Big on saving space.

To make it big, you have to be flexible. That's why the WT 300 e.tronic is easy to transport. The slewing unit together with the 70 m jib requires only three trucks; the 40' long counterjib is fitted with container connectors, enabling it to be transported on any standard chassis. Even small parts are allocated a set place and are, for the most part, secured automatically. Naturally, the compact design ensures that storage of the whole crane is space-saving. And it can be loaded in just one lift per unit.

Assembly. Off to a quick start.

Being well-prepared facilitates, simplifies and accelerates every assembly. That's why, with the WT 300 e.tronic, you can expect a crane with jib stays already pre-assembled and positioned or with connections accessible without additional erection platforms. And, of course, the assembly weights can very easily be adapted to the capacity of the assembly crane. Once it has been assembled, the current configuration is simply stored in the e.tronic control. And to program the maximum load limit switch, you need only one known test weight.

Maintenance. Some things guarantee success.

If you experience any obstacles on the construction site, our cranes overcome them easily. Because with the WT 300 e.tronic, tried and tested high volume components ensure reliability. The sophisticated error diagnostics system displays any faults and malfunctions on the touch panel. In many cases, these can be rectified by the crane operator himself. The operating and error data can be retrieved on any PC with a modem and the corresponding software. When the reservoir of the e.tronic-controlled central lubrication system is empty, you have the possibility to automatically send an SMS to a pre-selected service number.

Control. All but enviably smart.

The WT 300 e.tronic is equipped with the e.tronic programmable logic control system, featuring 230 V powerful relay switches rated in category AC 4 – so operational wear and tear is not an issue here. The safety-related measuring systems are fitted in duplicate and thus ensure that DIN EN 954/3 is complied with. And what's more, since the frequency converters controlled by absolute encoders are identical for all drives, they are completely interchangeable. The e.tronic includes an operating range limit with 8 polygons of max. 8 corner points each.

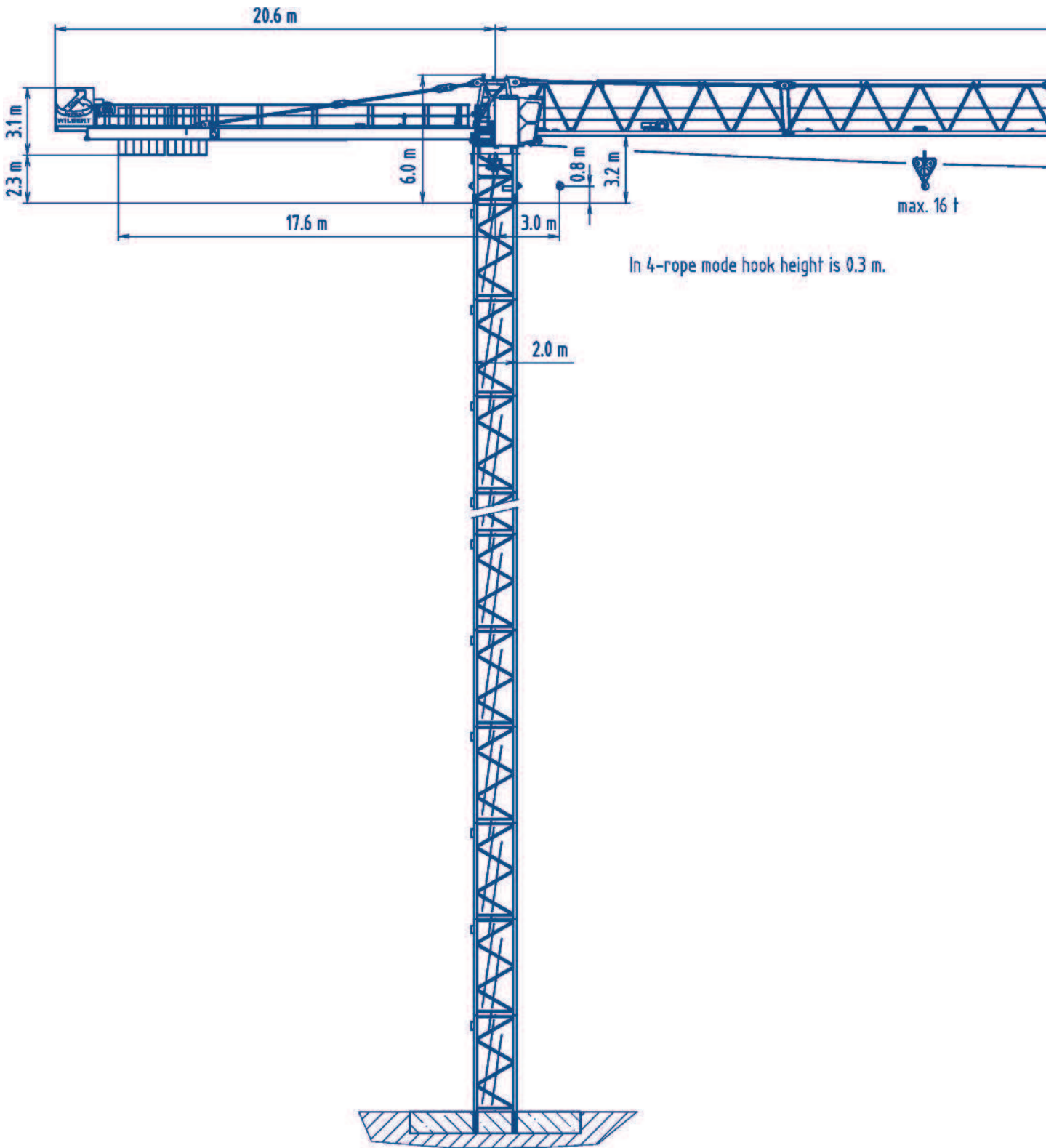
The spacious, side-mounted operator cab ensures the crane operator is comfortable and has clear visibility. It also features a touch panel providing him with all the important data he requires – in the language of his choice, of course.

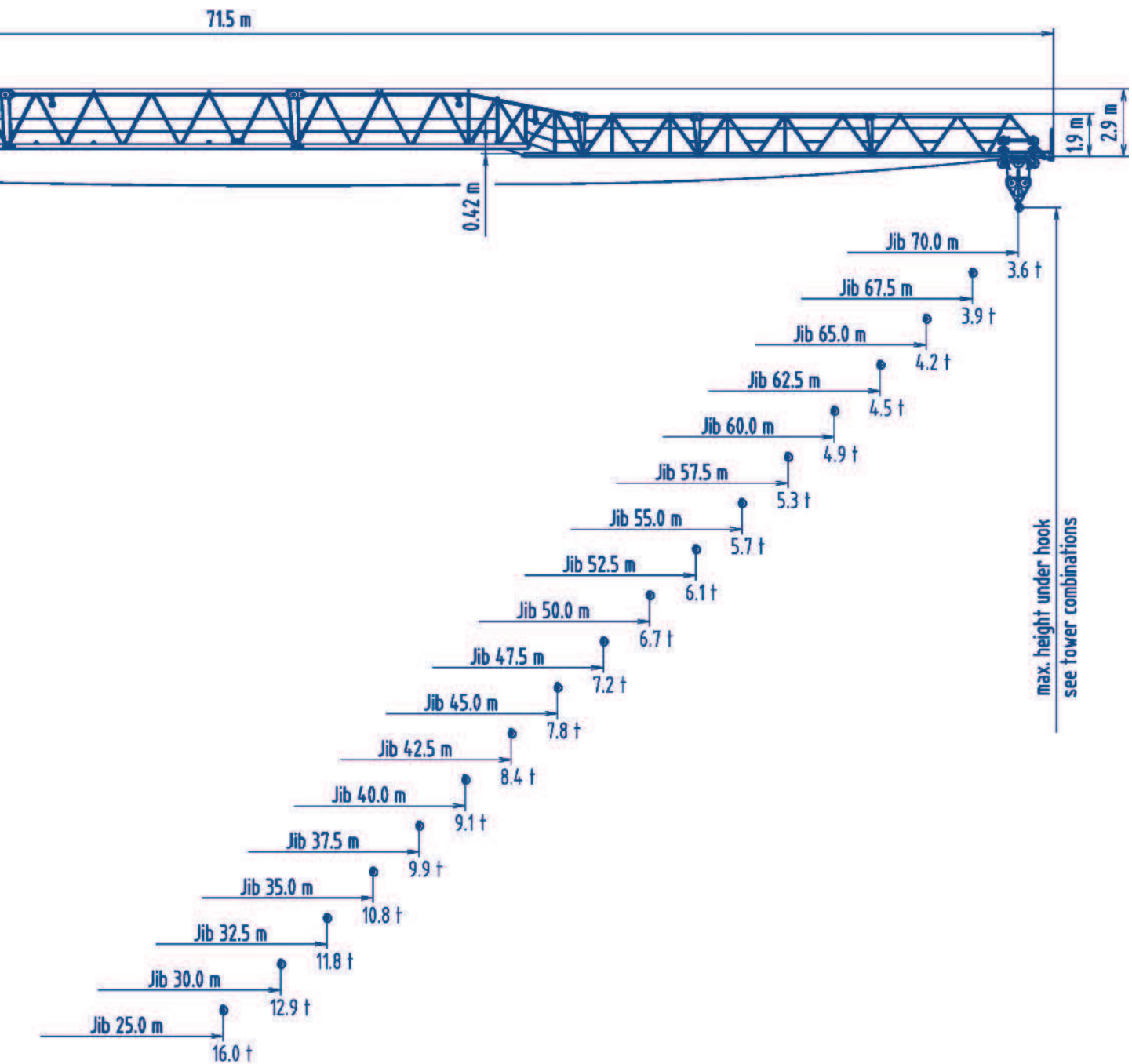
Modular system. Bigger with every step.

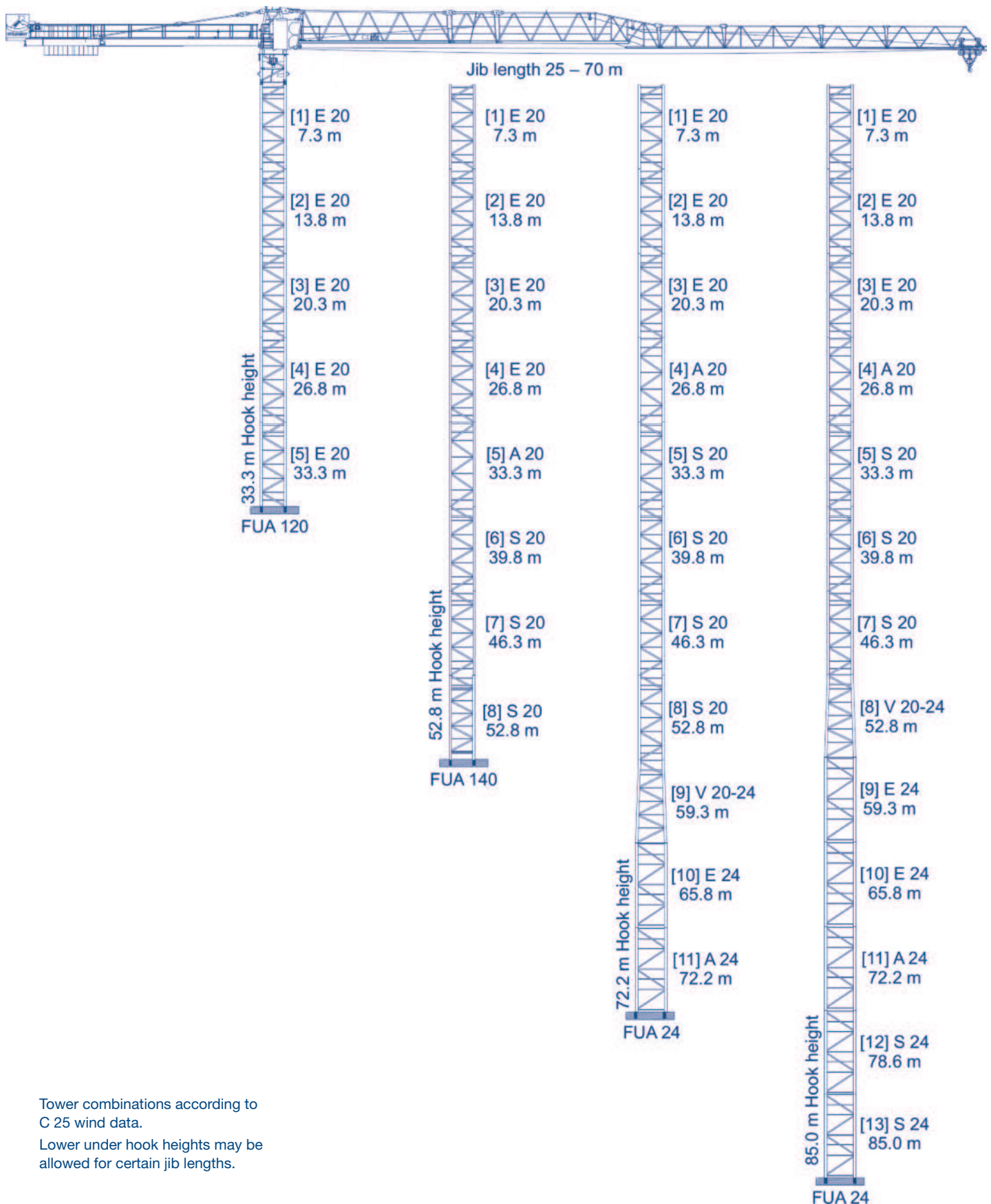
From 25 m to 70 m – just adapt the length of the jib as required, with eight different jib pieces in two and a half metre lengths. The slewing unit can be assembled on the 2 m wide tower elements having standard length of 6.5 m and featuring external and internal climbing frames. Additional tower elements in intermediate lengths as well as base elements such as foundation anchors, expandable cross frames and assembly-optimised crossframe elements – with pressure plates that can be replaced by rail-going undercarriages – are also available for flexible use. And as far as advertising is concerned, the two illuminated display boards can be changed quickly and easily – simply remove the diffusing panel and change the logo.

The real size of the WT 300 e.tronic is demonstrated by its maximum freestanding tower height of 98.8 m, realised with standard tower elements. Higher freestanding hook heights are possible with special tower elements. Just ask!

WILBERT Tower Cranes
Layout drawing

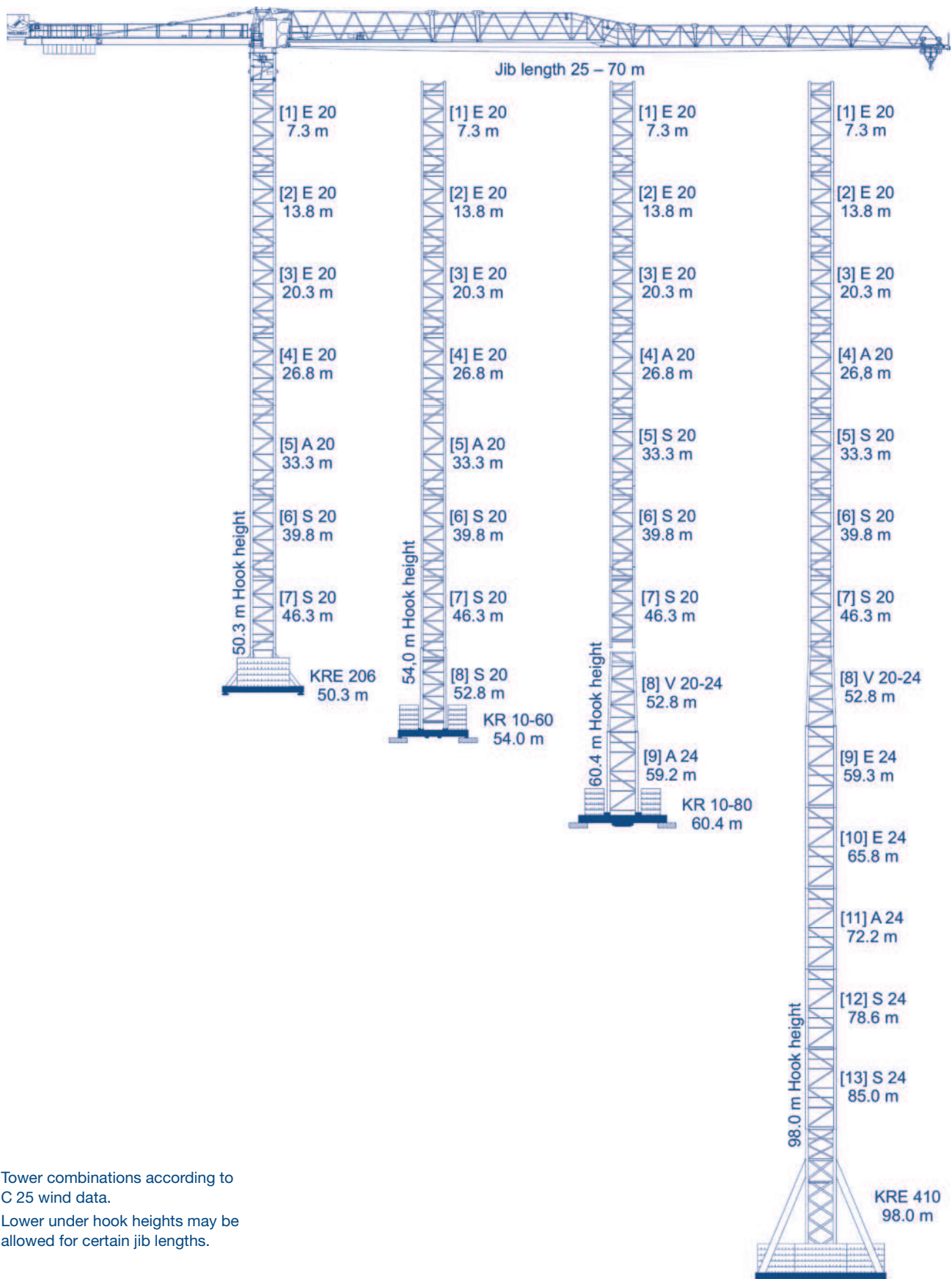





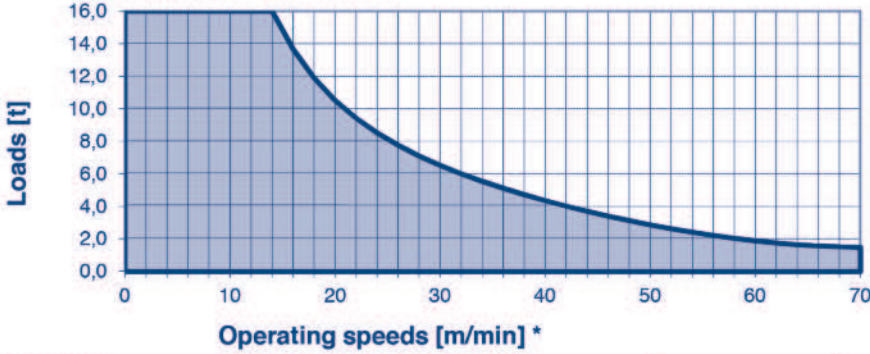

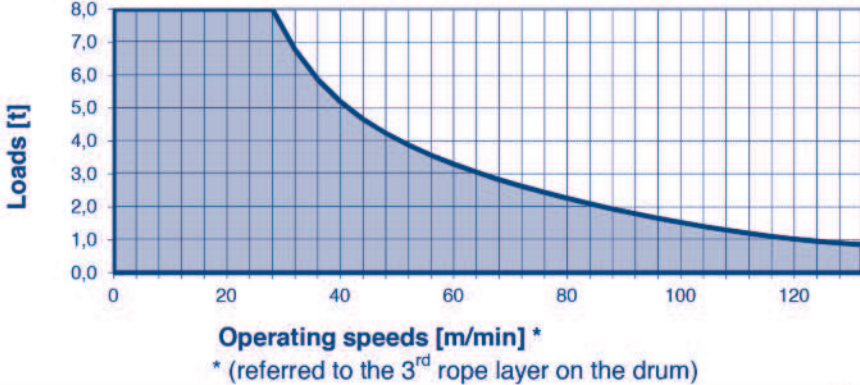

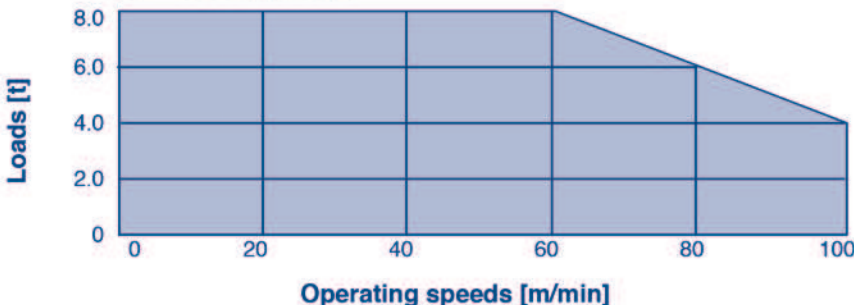





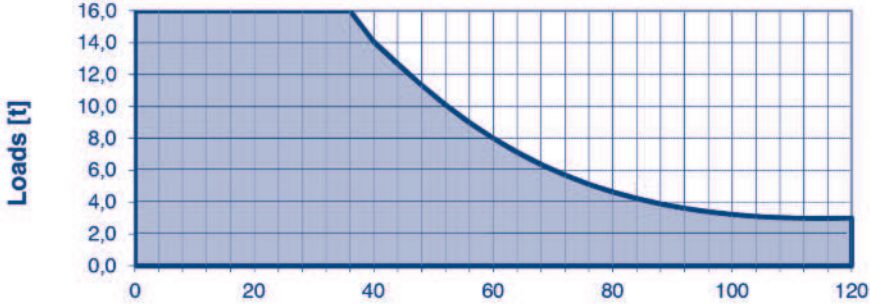

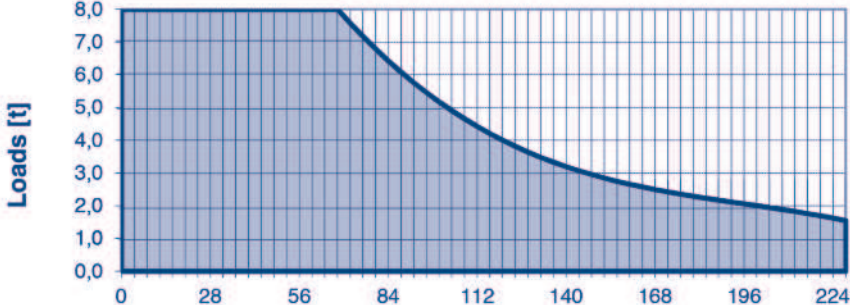

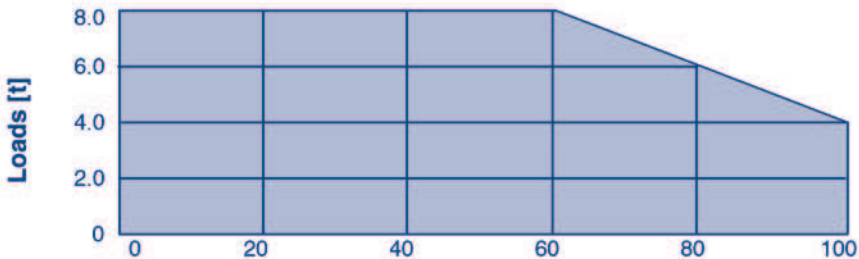


Tower combinations according to
C 25 wind data.

Lower under hook heights may be
allowed for certain jib lengths.

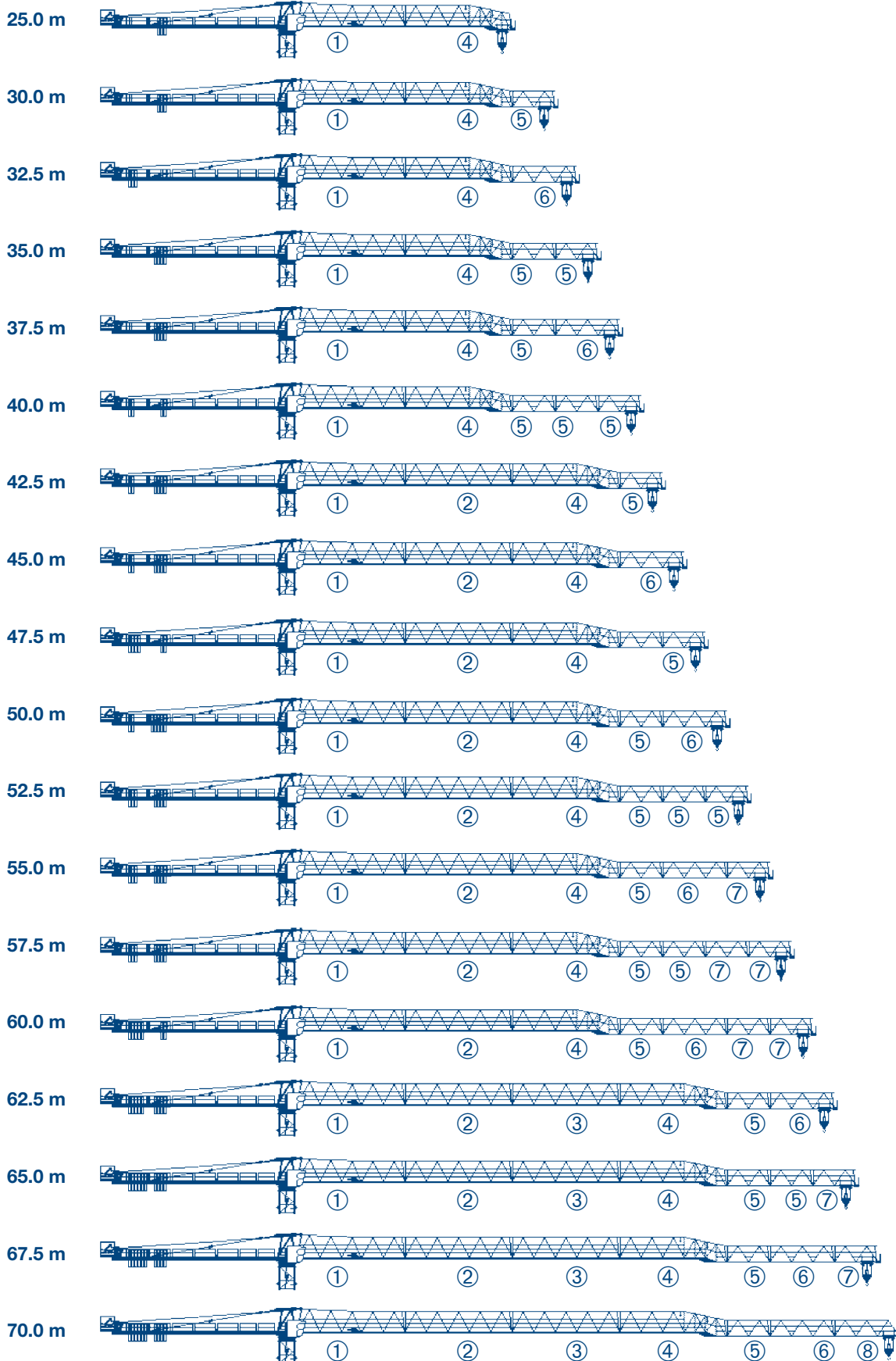












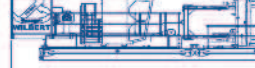

Tower combinations according to
C 25 wind data.
Lower under hook heights may be
allowed for certain jib lengths.

Drive [Type]	Operating Speeds Load	Hook travel max. [m]	Power rating [kW]
HFU 45-40	Hoisting	80	45
	<div>continuous acceleration</div>  <div>Operating speeds [m/min] *</div>		
HFU 45-40	Hoisting		45
	<div>continuous acceleration</div>  <div>Operating speeds [m/min] *</div> <div>*(referred to the 3rd rope layer on the drum)</div>		
TW	Moving trolley		9.2
	<div>continuous acceleration</div>  <div>Operating speeds [m/min]</div>		
DW	Slewing		2 x 7.5
	<div>continuous acceleration</div>  <div>Operating speeds [min⁻¹]</div> <div>0.8</div>		
Total power requirements			
64 kVA			
Total power requirements at utilisation factor 0.8			

Drive [Type]	Operating speeds Load	Hook travel max. [m]	Power rating [kW]
HFU 110-40	Hoisting	305	110
	<p>continuous acceleration</p>  <p>Loads [t]</p> <p>Operating speeds [m/min] *</p>		
HFU 110-40	Hoisting	610	110
	<p>continuous acceleration</p>  <p>Loads [t]</p> <p>Operating speeds [m/min] *</p> <p>* (referred to the 3rd layer on the drum)</p>		
TW	Moving trolley		9.2
	<p>continuous acceleration</p>  <p>Loads [t]</p> <p>Operating speeds [m/min]</p>		
DW	Slewing		2 x 7.5
	<p>continuous acceleration</p>  <p>Operating speeds [min⁻¹]</p>		
Total power requirements			
<p>124 kVA</p> <p>Total power requirements at utilisation factor 0.8</p>			

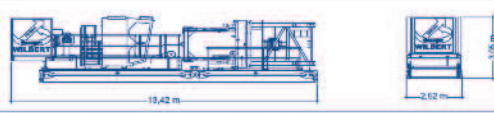
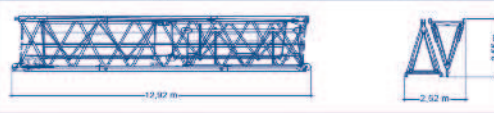

WILBERT Tower Cranes Jib combinations



Pos.	Qty.	Description	Package (not to scale)	Length [m]	Width [m]	Height [m]	Weight [kg]	Volume [m³]
1	1	Tower head section complete with several stay parts		5.93	2.48	2.40	8,150	35.21
2	1	Cab with cab platform		3.28	1.90	2.45	1,360	15.27
3	1	Counterjib 1 (lower section)		12.19	2.44	1.05	4,300	31.17
4	1	Counterjib 2 (upper section)		6.05	2.44	0.88	3,100	12.98
5a	1	Machine platform HFU 45-40 with hoist rope		2.90	2.49	2.03	3,500	14.65
5b	1	Machine platform HFU 110-40 with hoist rope		2.30	5.40	1.99	8,700	24.67
6	1	Jib section 1 with trolley gear		12.82	1.56	2.57	4,600	51.39
7	0 – 1*	Jib section 2		12.79	1.54	2.54	3,650	50.01
8	0 – 1*	Jib section 3		12.90	1.54	2.52	2,660	50.06
9	1	Jib section 4		12.85	1.50	2.91	2,700	55.98
10	0 – 3*	Jib section 5		5.31	1.15	1.85	800	11.30
11	0 – 1*	Jib section 6		7.78	1.15	1.85	950	16.52
12	0 – 2*	Jib section 7		5.22	1.15	1.84	425	11.05
13	0 – 1*	Jib section 8		7.67	1.15	1.84	540	16.18
15	1	Rope swivel crossbeam		0.64	1.08	0.43	110	0.29
16	1	Trolley 16 t		1.78	1.73	1.40	533	4.31
17	1	Hook block		1.06	0.30	1.78	640	0.57
18	1	Railings (loose parts)		2.50	0.90	1.10	362	2.48
19	1	Concrete counterweight (under machine platform)		1.19	1.96	0.38	2,000	0.88
20	3 – 10*	Concrete counterweight		0.36	1.41	2.22	2,700	1.13
21	1	Jib stay		1.34	0.42	0.42	390	0.24
22	2	Stay rod 1 (counterjib)		1.87	0.11	0.29	165	0.06
23	2	Stay rod 2 (counterjib)		5.30	0.11	0.29	310	0.17
24	2	Stay rod 3 (counterjib)		6.76	0.11	0.29	410	0.22

* Quantity according to jib length

Transport units

Pos.	Description	Package (not to scale)	Weight [kg]	Volume [m³]
A	Transport unit 1 Counterjib 1 + 2 with counterweight 2.0 t and machine platform, tower head section, cab with cab platform, trolley, small parts		24,773	103.15
B	Transport unit 2 30 m jib AL 1, AL 2 + AL 5, rope swivel crossbeam		9,585	83.02
C	Transport unit 3 40 m jib AL 3 + AL 6, AL 4 + AL 8, set of railings		7,212	88.22

WILBERT Turmkrane GmbH

Lohrgraben 2
55444 Waldlaubersheim
Germany
Phone: +49 (0)6707 6668-0
Fax: +49 (0)6707 6668-1490
Web: www.wilbert.de
Email: info@wilbert.de

presented by: