

# 45 TON

## WHL45TC125



With a 45-ton lifting capacity, combined with 125' reach and a sub-frame suitable for fifth wheel installation, the Hydra-Lift WHL45TC125 Swing Cab Cranes offer heavy lifting and versatility.

Out and down outriggers with independently operated horizontal extension cylinders and vertical jack cylinders, give the operator true stability on uneven surfaces or in tight locations. The fully equipped cab provides the operator with a comfortable working environment in all weather conditions. Mounted on a tandem steer tri-drive rear axle chassis with fifth wheel, or single steer tri-drive rear axle chassis, or tandem steer tandem drive rear axle chassis without fifth wheel, WHL45TC125 Cranes are truly capable of heavy lifting and heavy hauling.



### FEATURES & BENEFITS

- 45-ton lifting capacity (80,000 lbs at 10' radius)
- 135' tip height (fully extended)
- 4 section 125' fully proportional boom
- 38.6' retracted length
- Continuous 360° rotation
- Tapered rear subframe for fifth wheel installation
- Out and down outriggers
- Dual fan oil cooler
- Hydraulic tank heater
- Pre-wired boom and cab for LED work lights
- New cab design with electric controls
- Designed and tested to CSA Z-150 standards
- 15,000 lb, 2 speed grooved drum planetary winch with integral brake for high efficiency and security, includes cable packer
- High strength box construction, welded booms for maximum strength to weight ratio
- A2B and LMI system with digital radio weight indicator
- Remote Monitoring Video System: two cameras and one in-cab colour display (view right rear outriggers and winches)
- 40-ton four-sheave crane block (Easy Reeve)
- **Optional boom lights and air conditioning available**

Continued on next page >>

# LOAD CHARTS AND SPECIFICATIONS

## WHL45TC125 TRACTOR LOAD CHART Outriggers at Full Spread (240° over the back)

| MAIN BOOM MAXIMUM RATED LOAD IN LBS. |                   |                       |                   |             |                   |             |                   |             |                   |             |                   |                      |                   |                      |                   |                      |
|--------------------------------------|-------------------|-----------------------|-------------------|-------------|-------------------|-------------|-------------------|-------------|-------------------|-------------|-------------------|----------------------|-------------------|----------------------|-------------------|----------------------|
| LOADED OPERATING RADIUS              | LOADED BOOM ANGLE | RETRACTED BOOM LENGTH | LOADED BOOM ANGLE | BOOM LENGTH | LOADED BOOM ANGLE | BOOM LENGTH | LOADED BOOM ANGLE | BOOM LENGTH | LOADED BOOM ANGLE | BOOM LENGTH | LOADED BOOM ANGLE | EXTENDED BOOM LENGTH | LOADED BOOM ANGLE | EXTENDED BOOM LENGTH | LOADED BOOM ANGLE | EXTENDED BOOM LENGTH |
| FEET                                 | °                 | 38.6'                 | °                 | 45'         | °                 | 60'         | °                 | 75'         | °                 | 90'         | °                 | 105'                 | °                 | 120'                 | °                 | 125'                 |
| 10                                   | 69                | 80,000                | 72                | 53,000      |                   |             |                   |             |                   |             |                   |                      |                   |                      |                   |                      |
| 12                                   | 66                | 71,000                | 69                | 53,000      | 75                | 42,000      |                   |             |                   |             |                   |                      |                   |                      |                   |                      |
| 15                                   | 61                | 60,000                | 65                | 52,000      | 72                | 39,700      | 75                | 32,000      |                   |             |                   |                      |                   |                      |                   |                      |
| 20                                   | 52                | 45,000                | 58                | 43,400      | 67                | 36,700      | 71                | 29,000      | 75                | 25,000      |                   |                      |                   |                      |                   |                      |
| 25                                   | 41                | 38,000                | 50                | 35,900      | 61                | 34,100      | 67                | 27,000      | 71                | 23,800      | 74                | 20,000               | 76                | 16,600               |                   |                      |
| 30                                   | 28                | 27,000                | 41                | 28,500      | 56                | 29,600      | 63                | 25,500      | 68                | 22,300      | 71                | 18,500               | 74                | 15,200               | 74                | 12,600               |
| 35                                   |                   |                       | 30                | 23,700      | 50                | 26,000      | 59                | 23,300      | 65                | 20,300      | 68                | 16,000               | 71                | 13,500               | 72                | 12,600               |
| 40                                   |                   |                       | 11                | 19,600      | 43                | 21,100      | 54                | 21,500      | 61                | 19,400      | 65                | 13,500               | 69                | 12,200               | 69                | 11,400               |
| 45                                   |                   |                       |                   |             | 35                | 17,100      | 49                | 16,700      | 57                | 17,200      | 62                | 12,000               | 66                | 11,000               | 67                | 10,500               |
| 50                                   |                   |                       |                   |             | 26                | 14,400      | 44                | 14,400      | 53                | 15,500      | 59                | 10,600               | 63                | 10,000               | 64                | 9,800                |
| 55                                   |                   |                       |                   |             | 13                | 12,100      | 38                | 12,000      | 49                | 11,900      | 56                | 9,400                | 61                | 9,400                | 62                | 9,000                |
| 60                                   |                   |                       |                   |             |                   |             | 31                | 10,300      | 45                | 10,200      | 53                | 8,300                | 58                | 8,500                | 59                | 8,200                |
| 65                                   |                   |                       |                   |             |                   |             | 23                | 8,900       | 40                | 9,000       | 49                | 7,700                | 55                | 7,800                | 57                | 7,500                |
| 70                                   |                   |                       |                   |             |                   |             | 8                 | 7,800       | 35                | 7,800       | 45                | 6,900                | 52                | 7,100                | 54                | 6,700                |
| 75                                   |                   |                       |                   |             |                   |             |                   |             | 29                | 7,000       | 41                | 6,200                | 49                | 6,400                | 51                | 6,000                |
| 80                                   |                   |                       |                   |             |                   |             |                   |             | 21                | 6,200       | 37                | 5,600                | 46                | 5,800                | 48                | 5,400                |
| 85                                   |                   |                       |                   |             |                   |             |                   |             | 8                 | 4,600       | 32                | 5,100                | 42                | 5,300                | 45                | 4,800                |
| 90                                   |                   |                       |                   |             |                   |             |                   |             |                   |             | 26                | 4,600                | 38                | 4,800                | 41                | 4,400                |
| 95                                   |                   |                       |                   |             |                   |             |                   |             |                   |             | 19                | 4,200                | 34                | 4,400                | 38                | 3,900                |
| 100                                  |                   |                       |                   |             |                   |             |                   |             |                   |             | 7                 | 3,800                | 30                | 4,000                | 34                | 3,500                |
| 105                                  |                   |                       |                   |             |                   |             |                   |             |                   |             |                   |                      | 25                | 1,800                | 29                | 3,000                |
| 110                                  |                   |                       |                   |             |                   |             |                   |             |                   |             |                   |                      | 18                | 1,400                | 24                | 2,500                |
| 115                                  |                   |                       |                   |             |                   |             |                   |             |                   |             |                   |                      | 6                 | 1,000                | 18                | 1,700                |
| 120                                  |                   |                       |                   |             |                   |             |                   |             |                   |             |                   |                      |                   |                      | 6                 | 1,200                |
|                                      | 0                 | 22,000                | 0                 | 18,000      | 0                 | 11,000      | 0                 | 6,800       | 0                 | 3,600       | 0                 | 2,800                | 0                 | 1,000                | 0                 | 1,000                |

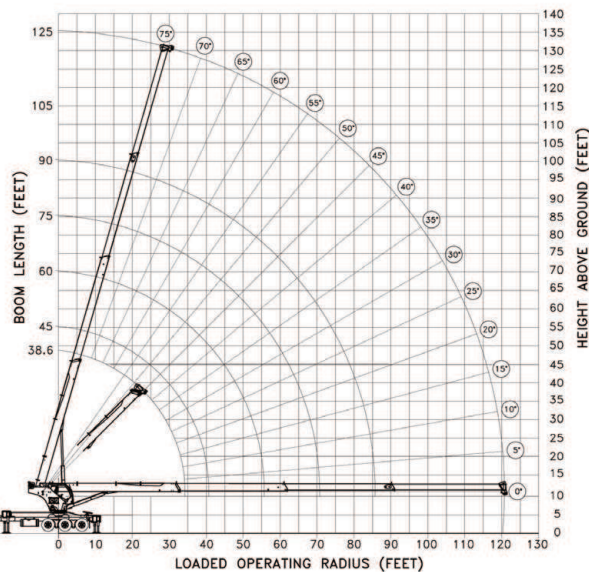
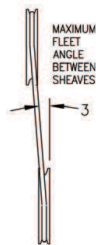
RATINGS ABOVE THE HEAVY LINE ARE BASED ON STRUCTURAL COMPETENCE AND NOT ON MACHINE STABILITY.

### WARNING

- Actual load radius governs all loads and must be measured manually
- Do not allow boom deflection to increase the load radius
- Anti-two-block system must be in good working condition before operating the crane
- Keep a minimum of five wraps of load on the winch drum
- Do not exceed 10 parts of line

### IMPORTANT

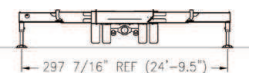
- Deductions must be made from rated loads for lifting accessories: Jib, Overhaul Ball, Load Hook, Snatch Block, Load Block, etc.
- Maximum outrigger pad load is less than 84,500 lbs.
- De-rate chart 2% of the rated load for every degree below -14°F
- At -40°F and below, the chart should be reduced to 50% of the rated load. Crane movement must be slow and shock loading avoided
- The crane should not be used at -58°F or colder



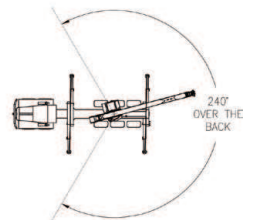
**MAXIMUM LINE PULL**

|                           |                            |
|---------------------------|----------------------------|
| 1 PART LINE<br>9,000 LBS  | 6 PART LINE<br>54,000 LBS  |
| 2 PART LINE<br>18,000 LBS | 7 PART LINE<br>63,000 LBS  |
| 3 PART LINE<br>27,000 LBS | 8 PART LINE<br>72,000 LBS  |
| 4 PART LINE<br>36,000 LBS | 9 PART LINE<br>81,000 LBS  |
| 5 PART LINE<br>45,000 LBS | 10 PART LINE<br>90,000 LBS |

- Lift line ratings are based on 5/8" 18x19 rotation resistant wire rope with a minimum breaking strength of 45,400lb (SF>5)
- Sheaves numbered from left to right when viewed facing the crane



### LOAD CHART WORKING AREA



FOR ALL OTHER LOADING CONFIGURATIONS, REFER TO LOAD CHART BOOKLET



12155 - 154 Street  
Edmonton, AB Canada T5V 1J3  
Toll Free: 1 800 661 0378 | Fax: 780 455 6770

www.weldco-hydralift.com

702-20-2709 (REV C)

Last revised: June 22, 2022

Courtesy of CraneMarket.com