



# 50 D

*Diesel self-propelled crane with on-board operator*

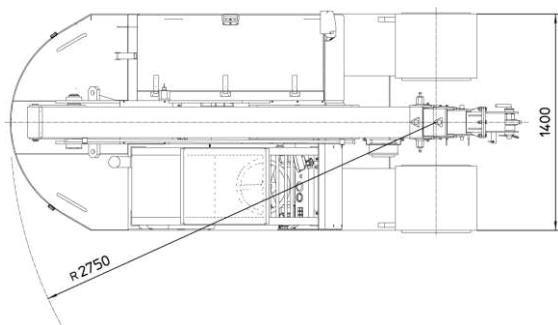
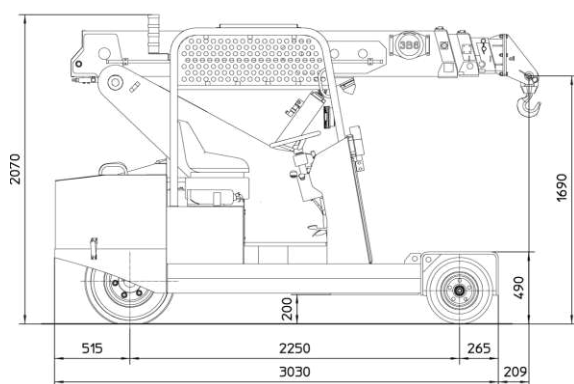
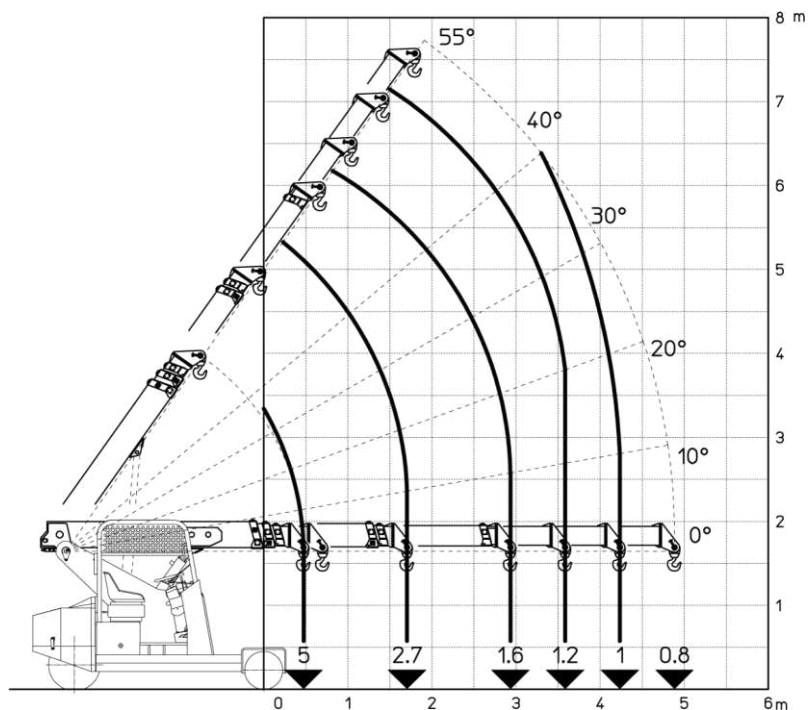


## FEATURES

**MAX CAPACITY** 5.000 kg  
**MAX BOOM EXTENSION** 4,88 m  
**MAX BOOM ANGLE** 55°  
**MIN BOOM ANGLE** 0°  
**WEIGHT** 5.300 kg  
**CONFORMITY** 2006/42 CE; 2014/30 CE;  
2014/35 CE; 2000/14 CE; EN 13000

<b>CHASSIS</b>	5 wheels structure made in high quality steel, with internal counterweights	
<b>WHEELS</b>	Front: n°4 superelastic wheels 16x7 – R8" Rear: n°1 superelastic wheels 23x10 – R12"	
<b>TRACTION</b>	Kubota D1105T, turbodiesel 3 cylinders engine, HP 24, kW 18 EU NRMM 97/68 EC Stage IIIa	
<b>TRANSMISSION</b>	Automatic (hydrostatic). Max speed 8 Km/h.	
<b>BRAKES</b>	Hydraulically controlled foot operating brake. Lever mechanically controlled parking brake	
<b>HYDRAULIC SYSTEM</b>	Gear pump, max pressure 210 bar	
<b>BOOM</b>	Manufactured in high quality steel, composed by four elements: main boom and three telescopic booms with sequential hydraulic unthreading	
<b>BOOM'S CONTROL</b>	By proportional lever distributor in the cab	
<b>PROGRESS COMMAND</b>	By pedals and steering wheel in the cabin	
<b>SAFETY SYSTEM</b>	Electronic load moment indicator (LMI) with display showing lifted load and boom position	
<b>STEERING</b>	Rear steering axle with hydraulic motor (hydro guide) mounted on the fifth wheel	
<b>TOTAL WEIGHT AND MAX CAPACITY</b>	Total weight: Kg. 5.300	Max Capacity: Kg 5.000
<b>OPTIONALS</b>	Hydraulic winch; chain hoists; carry-deck; manual and hydraulic jibs; cable remote control; radio remote control; working light; fire extinguisher; fully hydraulic boom.	

The values shown may vary depending on the configuration of the machine. The values shown may change at any time without notice



Rear steering with 180° rotation for maximum manoeuvrability



Operator's cabin with ergonomic controls and digital display for the electronic load moment indicator



Wide range of optional accessories for many applications

**Valla**  
MANITEX

VALLA MANITEX SRL  
Via Leonardo da Vinci 12  
29016 - Cortemaggiore (PC) - ITALY

PHONE: +39 0523 256411

EMAIL: [info@valla.com](mailto:info@valla.com)

SITE: [www.valla.com](http://www.valla.com)

cod. 891.056 rev. 01 ed. 06/2018