


Valla 50 D



Self Diesel operated Mobile Crane Max. Capacity **Lbs. 11,000**



	
OUTREACH (Ft)	CAPACITY (Lbs.)
6	4,600
9	3,800
15	2,000



TECHNICAL DATA

CRANE FRAME: five-wheelers frame fabricated from preformed and welded steel plate with built-in counterweight.

TRACTION: 3 cylinders, water cooled diesel engine Kubota D1105T – 23,5 kW.

TRANSMISSION: automatic (hydrostatic) – max. speed 8 k/h with final reduction gear in oil bath.

BRAKES: hydaraulically controlled foot operating brake. Lever mechanically controlled parking brake.

STEERING: power steering with hydraulic motor and gear 180° . Safety valves and filter.

WHEELS: nr. 1 rear pneumatic 250/60 R12 nr. 4 front superelastic 16 x 7 R8.

BOOM: boom fabricated from preformed and welded quality steel plate. Nr.4 telescoping sections: 1 fixed; 2 hydraulically telescoping and 1 manually telescoping. Fitted with nylon wear pads adjustable wear pads on the sides.

HYDRAULIC SYSTEM: in own enclosed circuit powered by a gear pump throughtwo control valves, lever operated, 1 for boom raise an lower, 1 for boom extension and retraction. Fitted with safety valves and filters. Maximum hydraulic pressure 210 Bar.

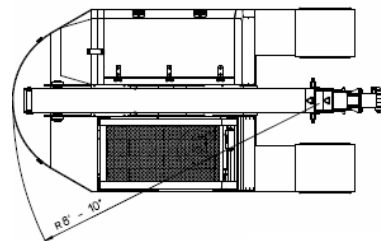
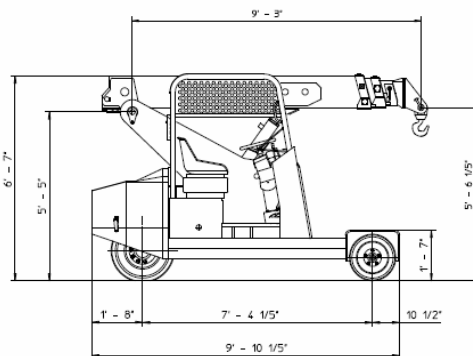
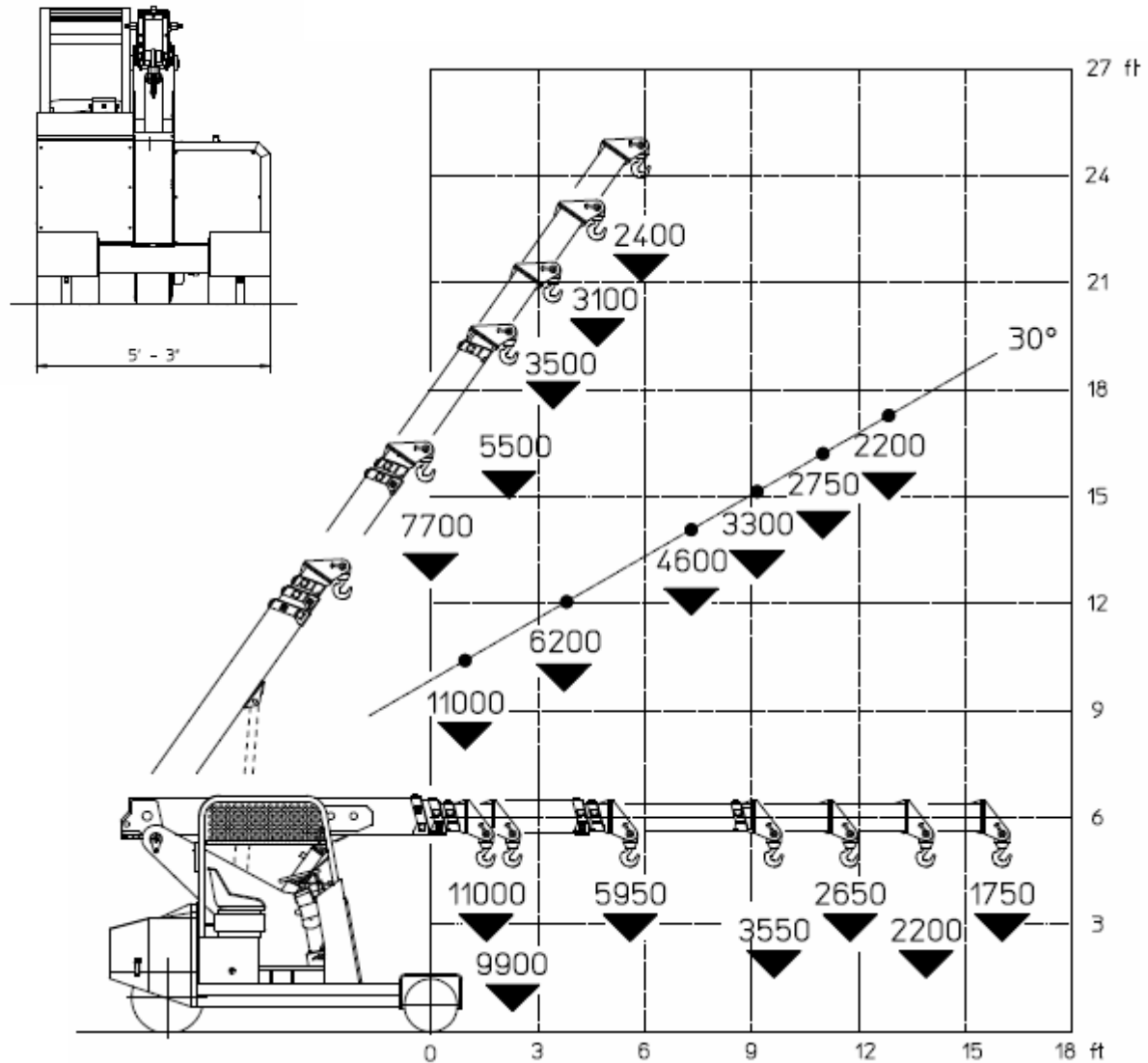
LMI: electronic Load Moment Indicator. Display showing lifted load, max allowed load, tilting percentage, operating radius, angle, telescope and light indicators on the operative mode.

TOTAL WEIGHT: approx. Lbs. 12,000 **MAX. CAPACITY:** Lbs. 11,000

Options on request: hydraulic winch; chain hoists; carry-deck; manual and hydraulic jibs; cable remote control; radio remote control; fully hydraulic boom; man bucket and relevant certification as aerial platform; full set of road lights, non marking tires.

Data subject to be changed without any previous notice. Pictures may differ form technical description.

VALLA mobile crane mod. 50D complies with the following standards:
-2006/42/CE
-UNIEN13000
-I.S.P.E.S.L.



Lbs./ft

MANITEX VALLA
SINCE 1945 LEADER IN PICK & CARRY

Valla a division of CVS Ferrari Srl
Via Piacenza, 45 - 29010 Calendasco (Piacenza) - ITALIA
Tel. +39 0523 762025 / 752004 - Fax +39 0523 760531
e-mail: info@valla.com - www.valla.com

Data subject to be changed without any previous notice. Pictures may differ from technical description.