



# 75 D

*Diesel self-propelled crane with on-board operator*

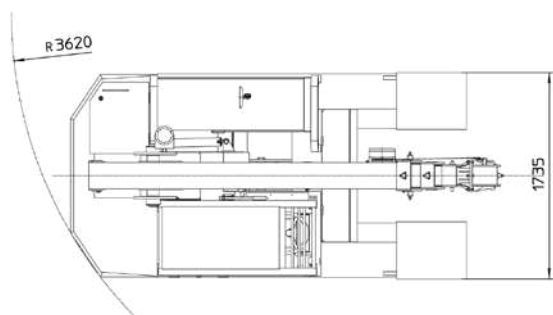
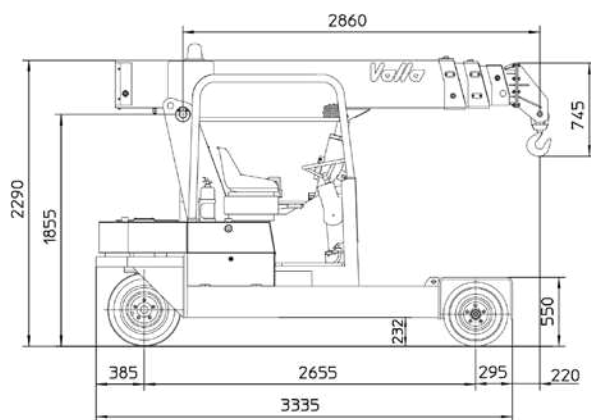
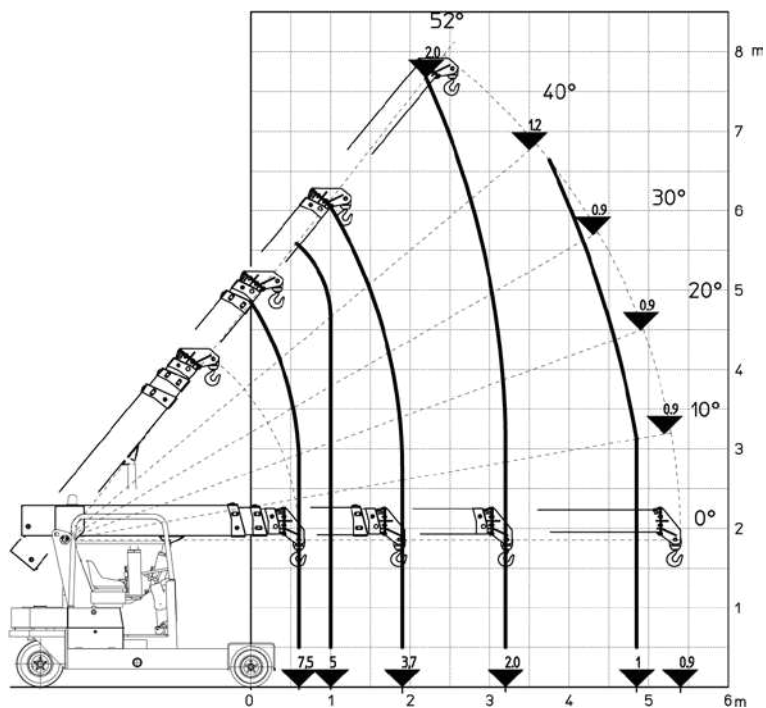


## FEATURES

**MAX CAPACITY** 7.500 kg  
**MAX BOOM EXTENSION** 5.4 m  
**MAX BOOM ANGLE** 52°  
**MIN BOOM ANGLE** 0°  
**WEIGHT** 6.100 kg  
**CONFORMITY** 2006/42 CE; 2014/30 CE;  
 2014/35 CE; 2000/14 CE; EN 13000

<b>CHASSIS</b>	6 wheels structure made in high quality steel, with internal counterweights and operator cab
<b>WHEELS</b>	Front: n°4 superelastic wheels 21x8 – R9” Rear: n°2 superelastic wheels 6,5 – R10”
<b>TRACTION</b>	Diesel 4 cylinders engine, air cooled, , HP 49, kW 36 EU NRMMD 97/68 EC Stage III°
<b>TRANSMISSION</b>	Automatic (hydrostatic) “automotive”. Differential axle. Max speed 13 Km/h.
<b>BRAKES</b>	Foot hydraulically operated brakes (disc on front, drums on rear wheels). Parking hand brake mechanically operated
<b>SUSPENSIONS</b>	Oscillating rear unit with mechanical lock
<b>BOOM</b>	Manufactured in high quality steel, composed by four elements: main boom and three telescopic hydraulic sections on nylon sliding pads. Adjustable side guide sliding pads for the recovery of the game
<b>BOOM’S CONTROL</b>	By joystick
<b>OPERATOR’S PROTECTION</b>	Made of sturdy 4-post steel frame with steel grille with full visibility
<b>SAFETY SYSTEM</b>	Electronic load moment indicator (LMI) with display showing: lifted load, max allowed load, tilting percentage, operating radius, angle, telescope and light indicators on the operative mode
<b>TOTAL WEIGHT</b>	Total weight: approx. Kg. 6.100
<b>MAX CAPACITY</b>	Max Capacity: Kg 7.500
<b>OPTIONALS</b>	Hydraulic winch, loading platform, mechanical jib, hydraulic jib, radio control only for aerial part, closed cabin

The values shown may vary depending on the configuration of the machine. The values shown may change at any time without notice



Rear steering with hydraulic cylinder between chassis and traction group for great performance also on not flat surfaces



Wide range of optional accessories for many applications



VALLA MANITEX SRL  
Via Leonardo da Vinci 12  
29016 - Cortemaggiore (PC) - ITALY

PHONE: +39 0523256411  
EMAIL: info@valla.com  
SITE: www.valla.com

cod.891.059 ed.06/2018

Courtesy of CraneMarket.com