



160 SD

Diesel Carry-deck crane with 16.000 kg capacity



FEATURES

MAX CAPACITY 16.000 kg
MAX BOOM EXTENSION 10,5 m
MAX BOOM ANGLE 70°
MINIMUM BOOM ANGLE 0°
WEIGHT 16.000 kg
CONFORMITY 2006/42 CE; 2014/30 CE; 2014/35 CE; 2000/14 CE; EN 13000

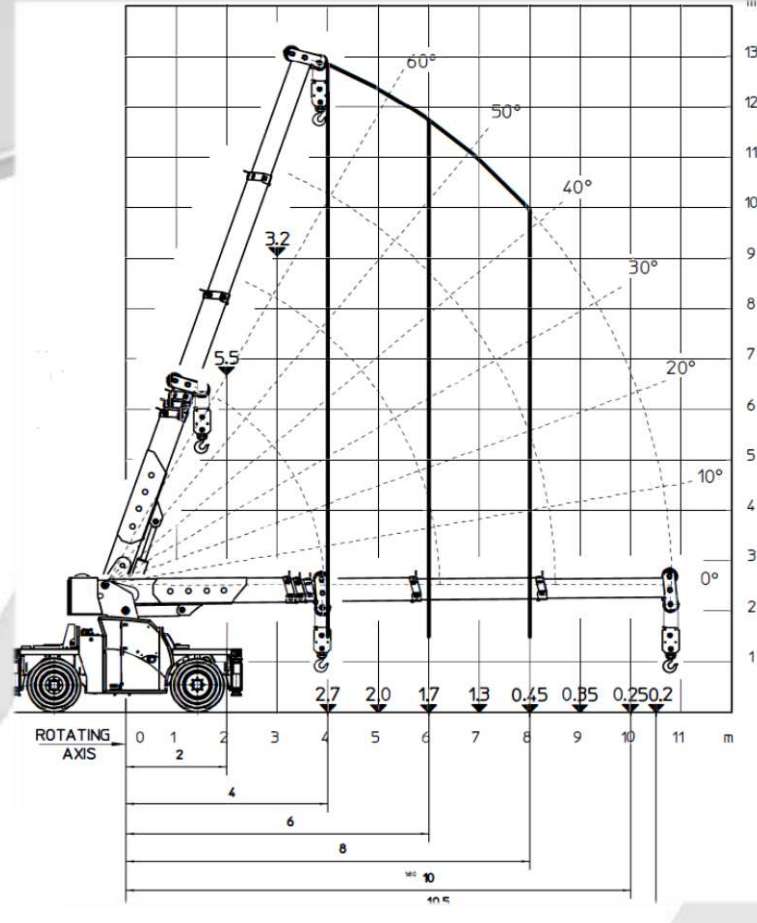
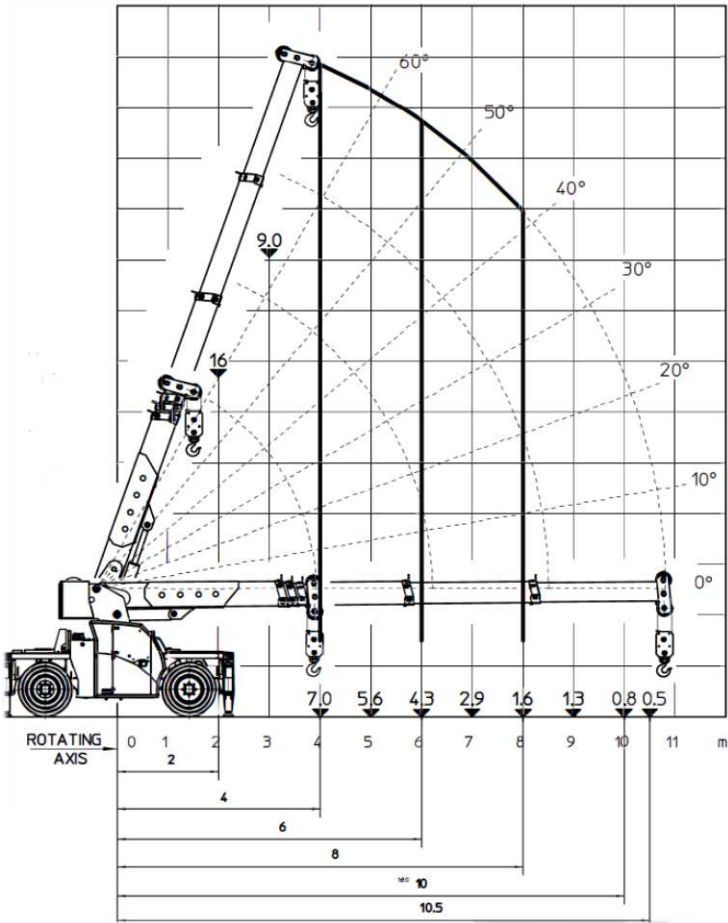
CHASSIS	4 wheels, H shaped type structure made in high quality steel.
OPERATOR CABIN	Ergonomic compliance, wide glass surface, FOPS compliance (ISO 13000).
WHEELS	FRONT: n°2 pneumatic tyres 10.00 – R20” REAR: n°2 pneumatic tyres 10.00 – R20”
TRACTION	Hydrostatic, permanent all wheels drive system .
SERVICE BRAKES	N°2 disc brakes in oil bath on front axle N°2 disc brakes in oil bath on rear axle
PARKING BRAKE	S.A.H.R disc brakes in oil bath on forward axle.
STEERING	Double steering axles with three different configurations: rear steering mode, crab steering mode, articulate steering mode.
LIGHTS	Automotive headlamps and working light.
TURRET	360° slewing feature.
BOOM	Manufactured in high quality steel, made by four elements: main boom and three telescopic hydraulic sections, 16T hydraulic winch.
FUEL	90l tank to refill with Diesel EN 590 only.
ENGINE	In-line-4-cylinders Turbo Diesel 74.5 kW @ 2200 rpm meets EU97/68 Stage IIIA, U.S. Epa Tier III or In-line-4-cylinders commonrail Turbo Diesel 75 kW @ 2200 rpm meets EU97/68 Stage IV, U.S. Epa Tier IV
STABILIZATION	4 H-type outriggers installed on 4 independent H-type crossbars.
BOOM CONTROL	CAN-bus joystick inside the cabin.
DRIVE CONTROL	By pedal and steering wheel.
SAFETY SYSTEM	Electronic load moment indicator (LMI) with display for load, boom’s position and boom’s angle control.
OPTIONALS	Manual flying jib, radio remote control (for boom, turret, winch), InTouch system®, cabin air conditioning, Tyco Ansul® fire extinguishing system, self-lubricating system, bonding reel, airport lights, collision avoidance cameras, crossbars with three different areas available per side (0%, 50%, 100%), spare wheel on deck.

All specifications are subject to change. Consult Valla for latest specifications

Courtesy of CraneMarket.com

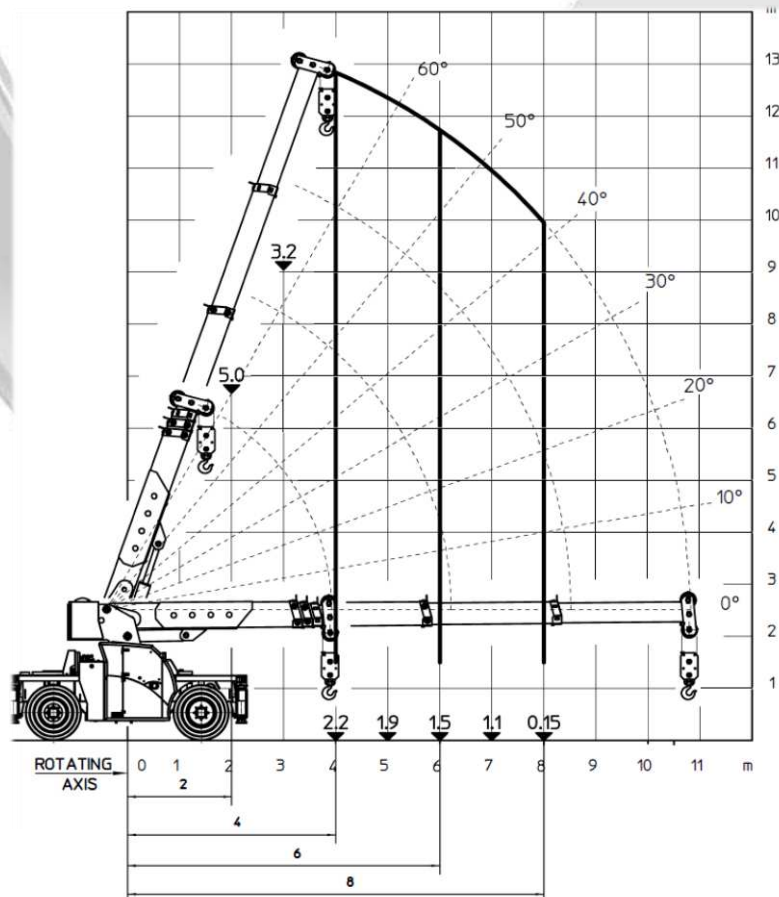
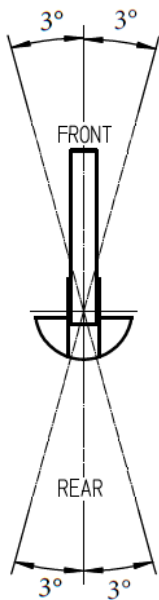
Front/Rear – on outriggers 0-50*-100%

Free on wheels

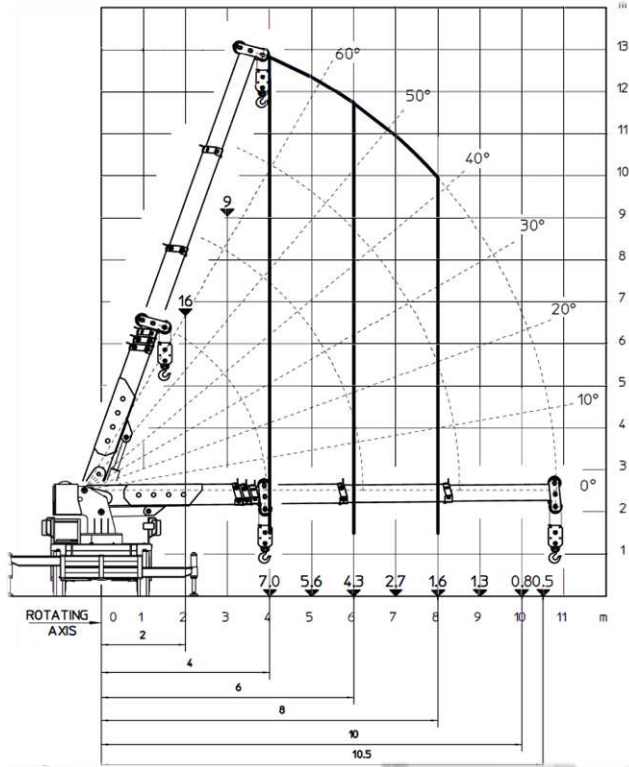


*extension 50% is an option

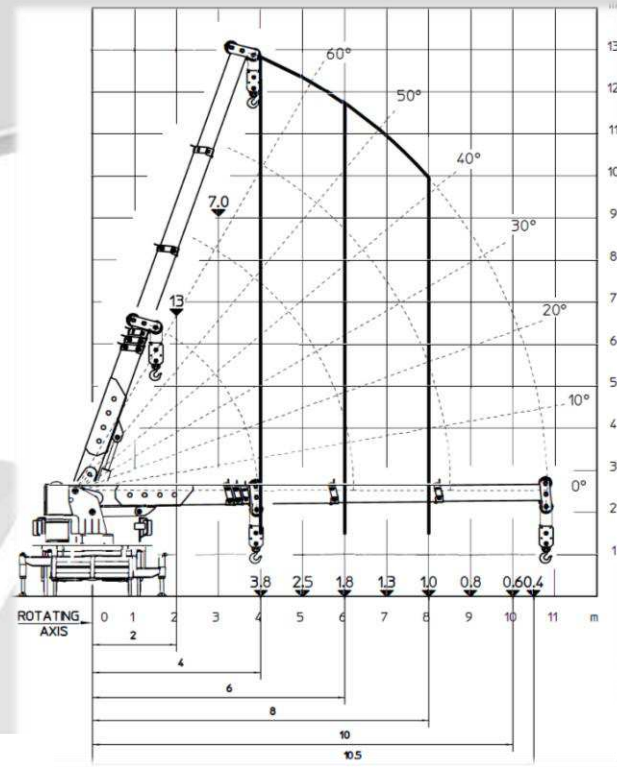
Pick & Carry – V < 3 km/h



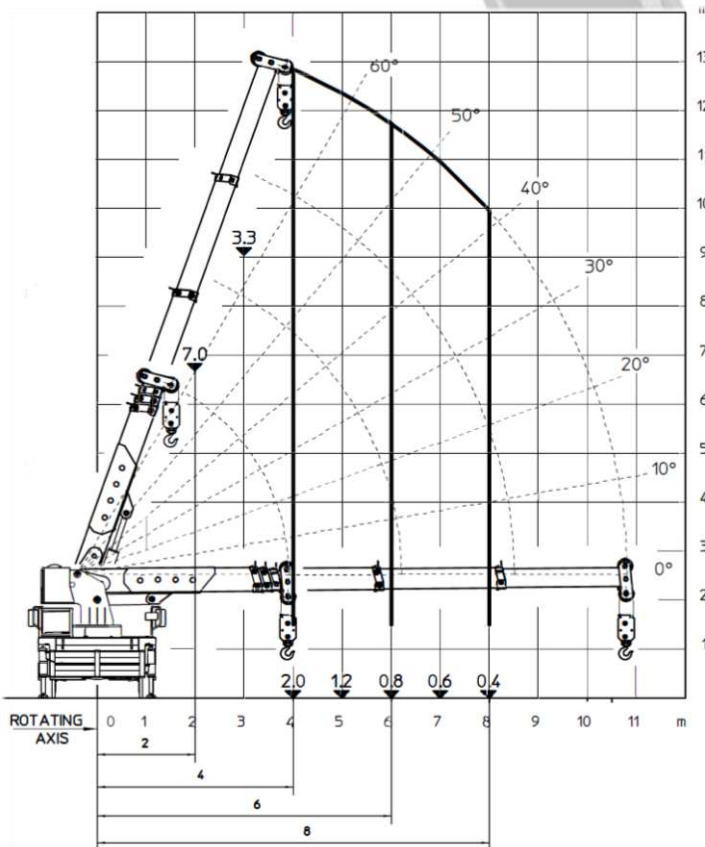
360° with outriggers at 100%



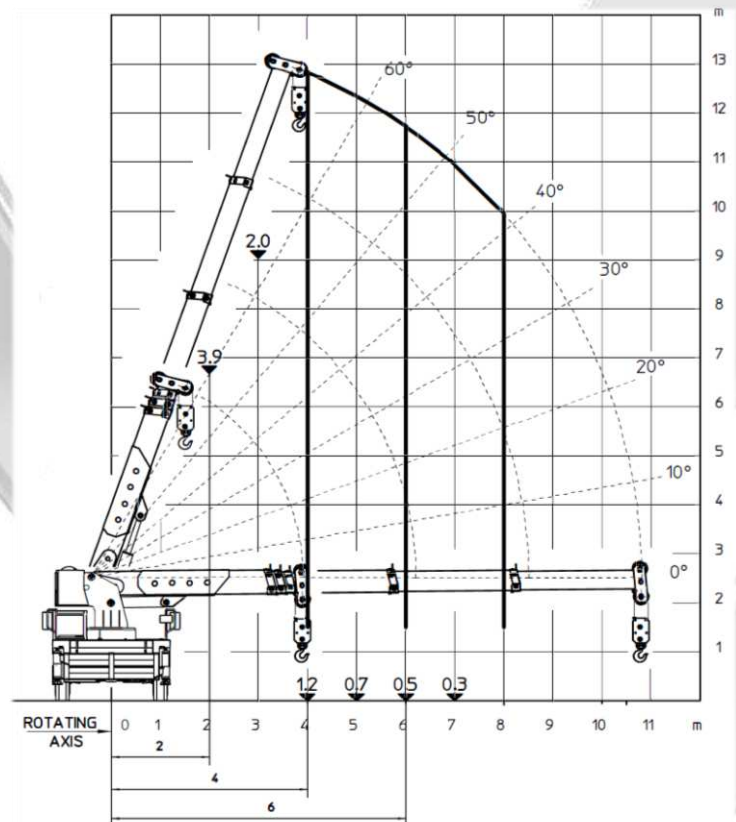
360° with outriggers at 50% (optional)

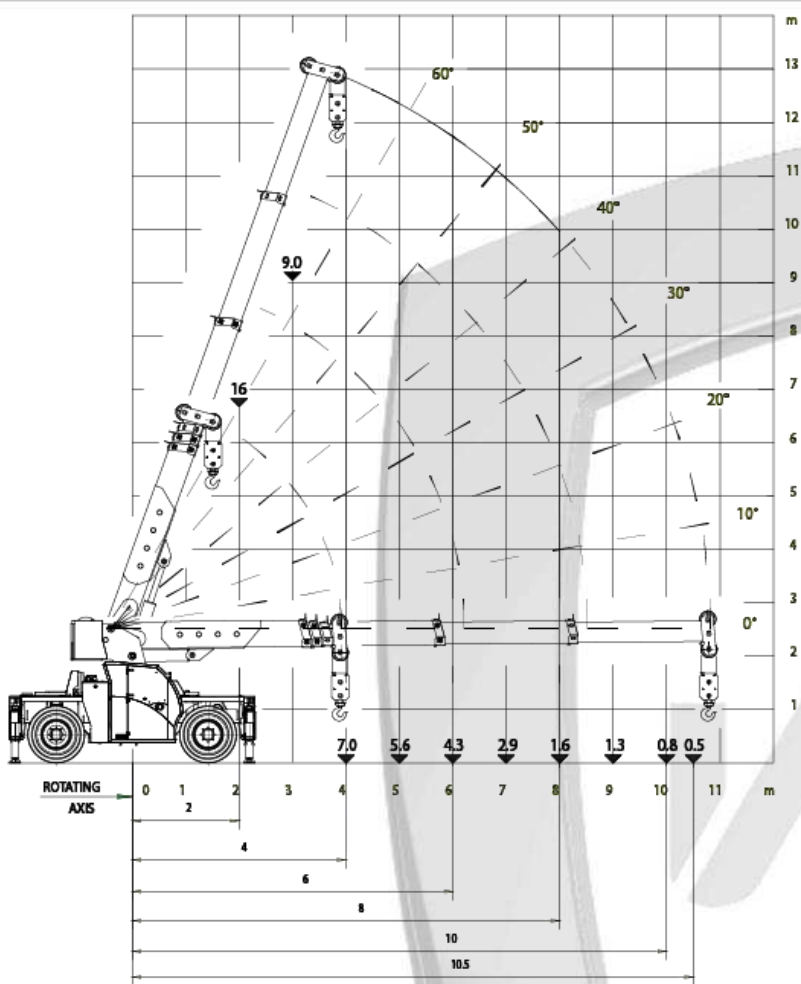


360° with outriggers at 0%

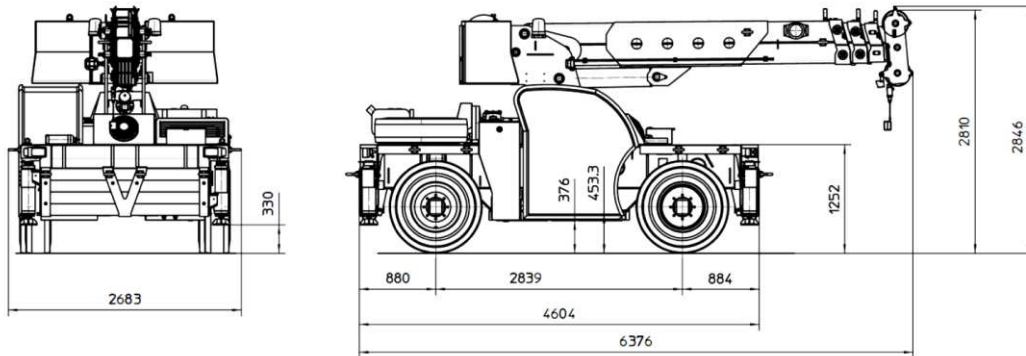


360° - on wheels

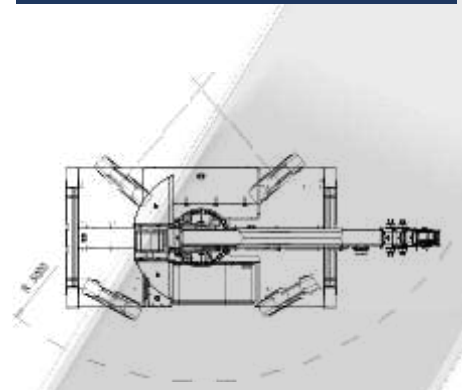
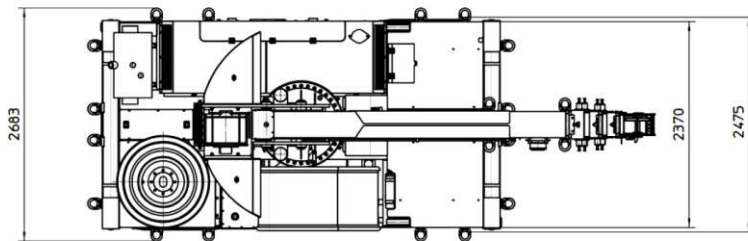




Ergonomic operator cabin



Independent crossbars and outriggers



Incredible handling

Lashing points are considered as option.



VALLA MANITEX SRL
Via Leonardo da Vinci 12
29016 - Cortemaggiore (PC) - ITALY

PHONE: +39 0523 256411
EMAIL: info@valla.com
SITE: www.valla.com

Cod. 891.071 ed. 06/2018