



180 D

Diesel operated Arm Lift Mobile Crane



FEATURES

MAX CAPACITY 18.000 kg
MAX BOOM EXTENSION 7.15 m
MAX BOOM ANGLE 53°
MIN BOOM ANGLE 0°
WEIGHT 19.000 kg
REMOVABLE COUNTER 3.450 kg
CONFORMITY 2006/42 CE; 2014/30 CE;
2014/35 CE; 2000/14 CE; EN 13000

CHASSIS 6 wheels structure made in high quality steel, with internal counterweights and operator cab

WHEELS Front: n°4 superelastic wheels 355/65 - R15"
Rear: n°2 superelastic wheels 355/65 - R15"

TRACTION Diesel 5 cylinders engine, air cooled, EU NRMMMD 97/68 EC Stage IIIa o Stage IVa

TRANSMISSION Automatic (hydrostatic) "automotive". Differential axle. Max speed 15 Km/h.

BRAKES Foot hydraulically operated brakes (disc on front, drums on rear wheels). Parking hand brake mechanically operated

SUSPENSIONS Oscillating rear unit with mechanical lock

BOOM Manufactured in high quality steel, composed by four elements: main boom and three telescopic hydraulic sections on nylon sliding pads

BOOM'S CONTROL By joystick

DRIVING MODE Automotive type hydro-guide which drives an articulated cylinder between the propulsion unit and the chassis.

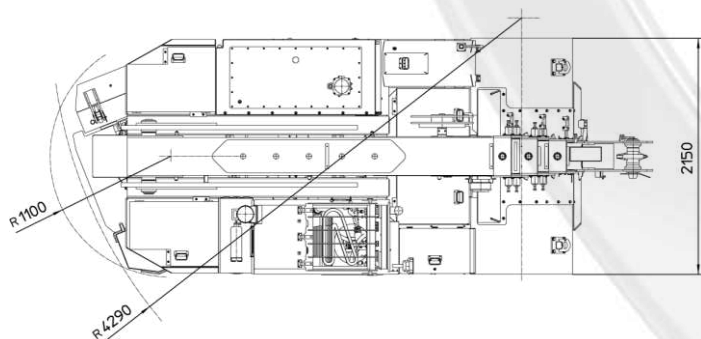
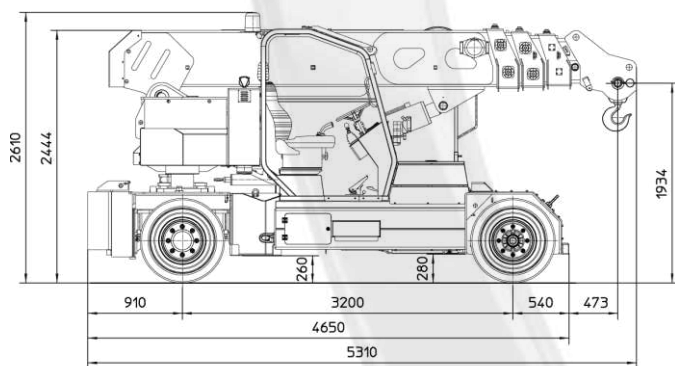
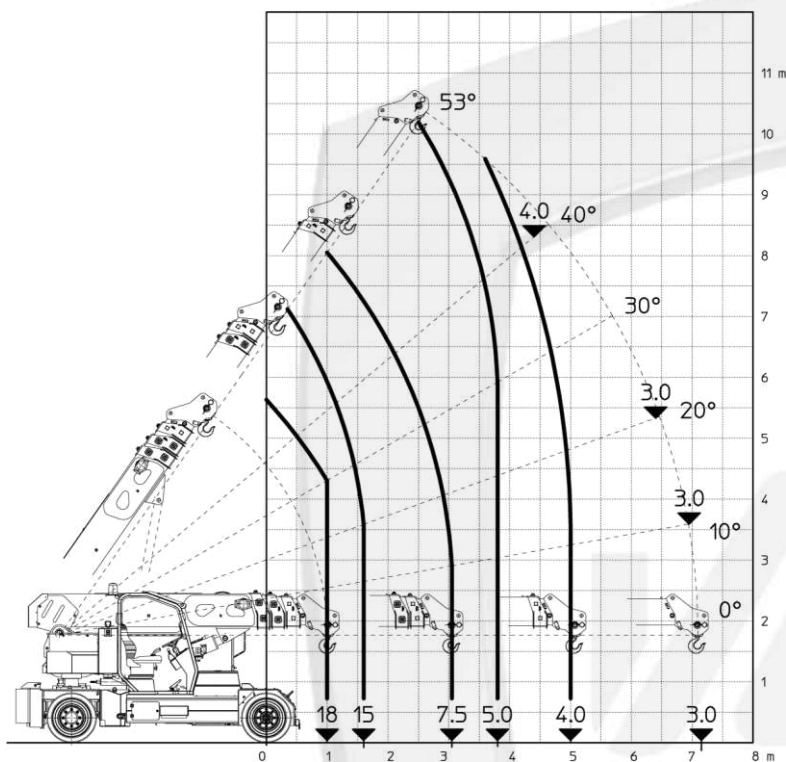
OPERATOR'S PROTECTION Made of sturdy 4-post steel frame with steel grille with full visibility

WEIGHT AND CAPACITY Total weight: approx. Kg. 19.000 Max Capacity: Kg 18.000

SAFETY SYSTEM Electronic load moment indicator (LMI) with display showing: lifted load, max allowed load, tilting percentage, operating radius, angle, telescope and light indicators on the operative mode

OPTIONALS Hydraulic winch, loading platform, Jib, radio control only for aerial part, closed cabin, heated cabin

The values shown may vary depending on the configuration of the machine. The values shown may change at any time without notice



Removable counter (3450 kg) to facilitate the crane's transport

Valla
MANITEX

VALLA MANITEX SRL
Via Leonardo da Vinci 12
29016 - Cortemaggiore (PC) - ITALY

PHONE: +39 0523 256411
EMAIL: info@valla.com
SITE: www.valla.com