



120 D

Diesel self-propelled crane with on-board operator

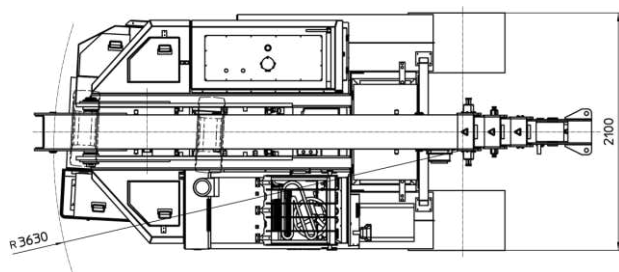
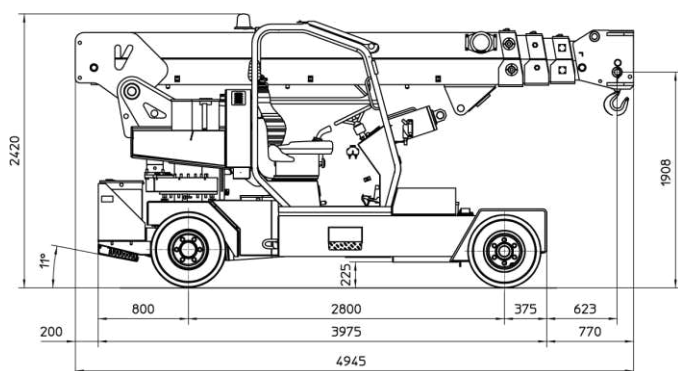
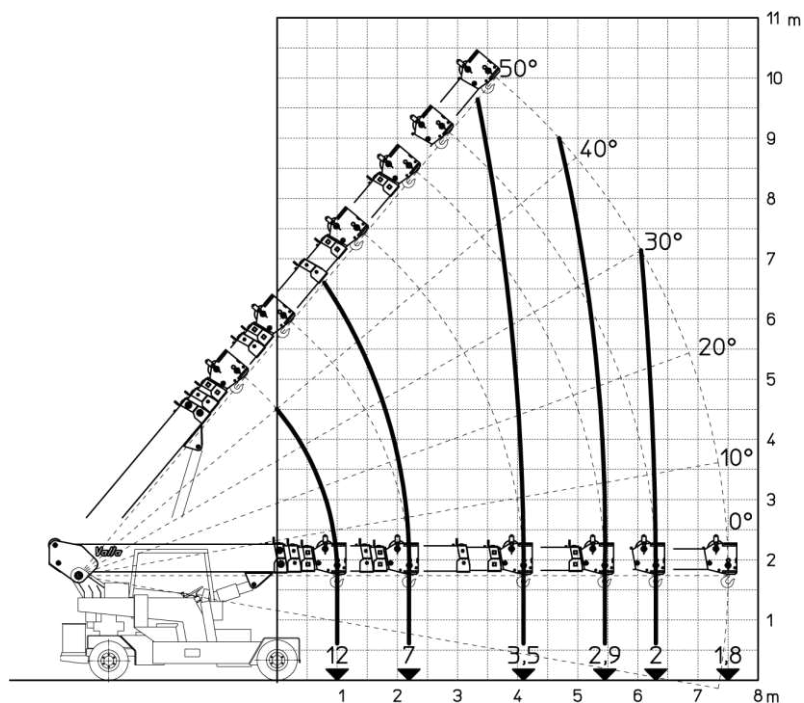


FEATURES

MAX CAPACITY 12.000 kg
MAX BOOM EXTENSION 7.5 m
MAX BOOM ANGLE 50°
MIN BOOM ANGLE 10°
WEIGHT 13.000 kg
CONFORMITY 2006/42 CE; 2014/30 CE;
2014/35 CE; 2000/14 CE; EN 13000

CHASSIS	6 wheels structure made in high quality steel, with internal counterweights and operator cab	
WHEELS	Front: n°4 superelastic wheels 250 - R15" Rear: n°2 superelastic wheels 250 - R15"	
TRACTION	Turbo Diesel 4 cylinders engine, air cooled, EU NRMMMD 97/68 EC Stage IIIa o Stage IVa	
TRANSMISSION	Automatic (hydrostatic) "automotive". Differential axle. Max speed 13 Km/h.	
BRAKES	Foot hydraulically operated brakes (disc on front, drums on rear wheels). Parking hand brake mechanically operated	
SUSPENSIONS	Oscillating rear unit with mechanical lock	
BOOM	Manufactured in high quality steel, composed by four elements: main boom and three telescopic hydraulic sections on nylon sliding pads. Adjustable side guide sliding pads for the recovery of the game	
BOOM'S CONTROL	By joystick	
DRIVING MODE	Automotive type hydro-guide which drives an articulated cylinder between the propulsion unit and the chassis.	
OPERATOR'S PROTECTION	Made of sturdy 4-post steel frame with steel grille with full visibility	
WEIGHT AND CAPACITY	Total weight: approx. Kg. 13.000	Max Capacity: Kg 12.000
SAFETY SYSTEM	Electronic load moment indicator (LMI) with display showing: lifted load, max allowed load, tilting percentage, operating radius, angle, telescope and light indicators on the operative mode	
OPTIONALS	Hydraulic winch, loading platform, Jib, radio control only for aerial part, closed cabin	

The values shown may vary depending on the configuration of the machine. The values shown may change at any time without notice



Prolunga idraulica brandeggiabile
reclinabile sul fianco, disponibile come
accessorio



Braccio telescopico in grado di
raggiungere altezze fino a 10 metri



Vasta disponibilità di accessori per
l'efficace gestione di una ampia gamma di
applicazioni

Valla
MANITEX

VALLA MANITEX SRL
Via Leonardo da Vinci 12
29016 - Cortemaggiore (PC) - ITALY

PHONE: +39 0523 256411
EMAIL: info@valla.com
SITE: www.valla.com