

TMS 860

Product Guide



HYDRAULIC TRUCK CRANE

Features

- **MAX. CAPACITY** - 60 Tonnes at 3m radius (85% Rating) 360° Slew
- **BOOM** - 5 Section formed full - power boom 11.2m - 41.3m
 - 10.1 m fixed lattice extension (optional)
 - 17.1 m tele lattice extension (optional)
- **MAX. ROAD SPEED** - 47 km/hr
- **CARRIER** - 8x4 Drive

Superstructure Specification

BOOM

5-section, telescopic, formed, full power, sequenced-synchronized boom. Fabricated from high strength, low alloy steel plates. Telescopic sections slide on adjustable and replaceable low friction wear resistance pads.

Telescoping Range : 11.2m - 41.3m

Maximum tip height : 44.0m. for main boom

: 54m with 10.1m fixed lattice extension

: 60m with 17.1m tele lattice extension

BOOM NOSE

Five nylatron sheaves mounted on heavy duty tapered roller bearings with removable pin-type rope guards.

BOOM ELEVATION

Single double acting hydraulic cylinder with integral holding valve.

BOOM ANGLE

Maximum 78°, Minimum -1.8°.

SUPERSTRUCTURE FRAME

Fabricated from high tensile steel plates and sections.

SLEW SYSTEM

Ball bearing swing circle with 360° continuous rotation. Planetary glide swing with foot applied multi-disc wet brake. Spring applied hydraulically released parking brake. Mechanical house lock operated from cab. Free slew facility provided.

SLEW SPEED

Maximum 2.0 RPM (Unladen).

HOIST SYSTEM

Power up and down, equal speed, planetary reduction with integral automatic spring applied multi-disc brake on grooved hoist barrel. Hoist drum fitted with third wrap indicator.

Max. Single Line Pull : Hoist Drum

1st Layer : 7955 kg, 2nd Layer : 7273 kg, 3rd Layer : 6705 kg,

4th Layer : 6218 kg, 5th Layer : 5800 kg.

Max. Single Line Pull : Hoist Rope

7250 kg with 18 x 19 class rope.

Max. Single Line Speed :

113 m/min. (Unladen) - Top layer.

Non Spin Hoist Rope :

Rope length 182m and 19mm (3/4") dia.

HOOK BLOCK

60 MT, 5 sheaves.

COUNTERWEIGHT

6000 kg. Pinned with superstructure.

CRANE CONTROLS

Joystick controls are in operator's cab for slewing, telescoping,

hoisting and derricking with independent or simultaneous operation of crane motions.

HYDRAULIC SYSTEM

Pump - 3 sec. gear pump driven through gearbox PTO.

Engine driven steering pump.

Valves - 3 nos. Over center control valves with built-in pressure relief.

Filter - Return line type, full flow with bypass protection and service indicator. Replaceable cartridge.

Reservoir - 800 litres capacity fitted with filter, external sight gauge, clean out access, strap mounted to frame.

Oil Cooler - Remote mounted, thermostatically controlled electric motor driven fan.

LOAD MOMENT INDICATOR & ANTI-TWO BLOCK SYSTEM

Electronic load moment indicator system with audio-visual warning & control lever lockout indicates electronic display of boom angle, length, radius, relative load moment, permissible load, load indication & warning of impending two block condition. Motion cut off to ensure the safe operation with load for tele, derrick & hoist motions.

SAFETY SYSTEM

Pendant Limit Switch on boom head for over hoist. Third wrap indicator on hoist barrel to ensure 3 turns of rope on hoist drum.

Hydraulic relief valves protect pumps and structures from excessive pressure. Lock and counterbalance valves fitted on derrick, telescopic and outrigger cylinders to sustain rams in the event of hydraulic failure.

OPERATOR'S CAB

Totally enclosed steel construction, full vision type, windows fitted with toughened safety glass including front windscreen. Adjustable operator's seat, cab interior light, electric fan, electric horn, electric windshield wiper and lockable sliding door. Ergonomically designed cab and controller layout to give fatigue free comfort to the operator.

OPTIONAL EQUIPMENT

Auxiliary Hoist

Air Conditioned Super Cabin

Air Conditioned Carrier Cabin

10.1m Fixed Lattice

17.1m Tele Lattice

40T/50T Hook Block (Loose Supply)

15T Single Sheave Hook Block (Loose Supply)

6.8T Headache Ball

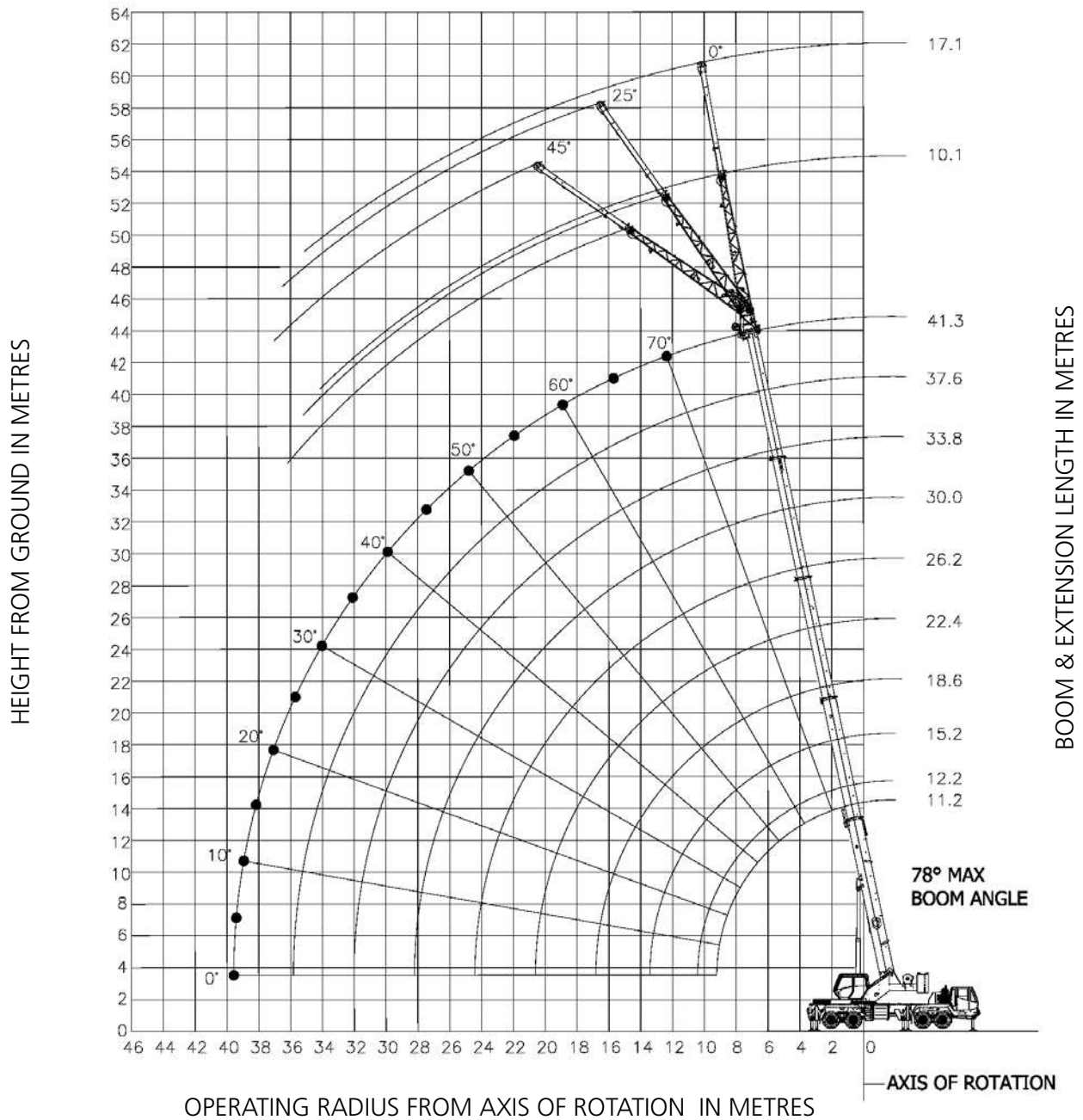
Tie Down Rope

Anemometer

5 Kg. Fire Extinguisher

Height of Lift : 5 Section 11.2m - 41.3m Full Power Boom
: 10.1m Fixed Lattice Extension
: 17.1m Tele Lattice Extension

WORKING RANGE DIAGRAM
 (BOOM DEFLECTION NOT SHOWN)



NOTE:
 The above heights of lift and boom angles are based on a straight (unladen) boom and allowance should be made for boom deflections obtained under laden conditions.

Lifting Capacities (Metric) 85% Rating 5 Section Boom Duties (in Kilograms)

Main Boom Duties on Outriggers Fully Extended - Full 360° Slew

Radius in Meters	Main Boom Length (in Meters)									
	11.20	12.20	15.20	18.60	22.40	26.20	30.00	33.80	37.60	41.30
3.00	60000	44000								
3.50	56000	44000	42500							
4.00	52000	44000	42500	26575						
4.50	47000	44000	42500	26575	14000					
5.00	41000	41000	41000	26575	14000	13000				
6.00	33000	33000	32000	26575	14000	13000	13000			
7.00	27000	27000	26250	25925	14000	13000	13000	13000		
8.00	21050	20500	20000	19600	13350	13000	13000	13000	10250	
9.00	16675	16500	15800	15350	11850	12100	11500	11500	10250	5535
10.00		13500	12775	12375	10625	11000	11000	11000	10250	5535
12.00			8710	8350	9000	9470	9825	9830	10250	5535
14.00				5820	6450	6905	7250	7430	7620	5535
16.00				4035	4650	5095	5425	5665	5855	5535
18.00					3340	3770	4090	4320	4505	4655
20.00					2330	2755	3070	3295	3475	3620
22.00						1955	2265	2485	2665	2805
24.00						1310	1615	1830	2005	2145
26.00							1080	1295	1465	1600
28.00							630	840	1010	1145
30.00									625	760

Note: Minimum boom angle 0 degree for 41.3 meter boom length (no load) at over rear only.

WARNING- Do not derrick- up from 0 degree boom angle if boom length is more than 33.8 meter.

10.1m Fixed Offsettable Boom Extension on Outriggers Fully Extended - 360° Slew

Radius (in Meters)	10.1m length		
	0° Offset	25° Offset	45° Offset
12.0	3,875		
14.0	3,875		
16.0	3,875	3,375	
18.0	3,780	3,260	2,965
20.0	3,450	3,005	2,840
22.0	2,820	2,780	2,690
24.0	2,190	2,160	2,060
26.0	1,670	1,640	1,540
28.0	1,230	1,200	1,100
30.0	750	750	700

17.1m Tele Offsettable Boom Extension on Outriggers Fully Extended - 360° Slew

Radius (in Meters)	17.1m length		
	0° Offset	25° Offset	45° Offset
12.0			
14.0	2,280		
16.0	2,280		
18.0	2,280		
20.0	2,280	2,040	
22.0	2,280	2,035	
24.0	2,190	1,900	1,685
26.0	1,900	1,780	1,630
28.0	1,450	1,450	1,350
30.0	1,000	1,000	950

TMS 860

Notes

Weight Reduction for Load Handling Devices (approx.)

Auxiliary Boom Head	60 kg
Hookblocks and Headache Ball	
60 MT, 5 Sheaves	**570 kg
40 MT / 50 MT	**426 kg
15 MT, 1 Sheave	**418 kg
6.8 MT, Headache Ball	**140 kg

10.1m Boom Extension	
Stowed (Boom Extension)	*470 kg
Erected (Boom Extension)	*2,195 kg
17.1m Boom Extension	
Stowed (Boom Extension)	*725 kg
Erected (Boom Extension)	*3,680 kg

* Reduction of main boom capacities
 ** Refer to rating plate for actual weights

Hookblock Capacities and Weights - Tonnes

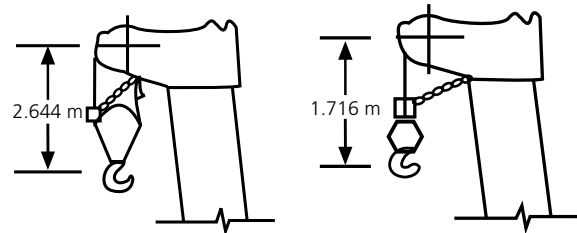
No of Falls	10	9	8	7	6	5	4	3	2	1
Permissible Load	60	55.0	50.0	40.0	35.0	30.0	23.0	17.0	12.0	6.0
Weight of Hook Block	0.570	0.570	0.570	0.570	0.570	0.570	0.570	0.570	0.418	0.140

Notes for Lifting Capacities

WARNING: THIS CHART IS ONLY A GUIDE. The Notes below are for illustration only and should not be relied upon to operate the crane. The individual crane's load chart, operating instructions and other instruction plates must be read and understood prior to operating the crane.

- All rated loads have been tested to meet minimum requirements of IS: 4573-1982 Specification for Power Driven Mobile Cranes, and do not exceed (85% of the tipping load on outriggers as well as on rubber) as determined by SAE J765OCT 80 Crane Stability Test Code.
- The weight of hook-block, slings and all similarly used load handling devices must be added to the weight of the load. When more than minimum required reeving is used, the additional rope weight shall be considered part of the load.
- Capacities appearing above the bold line are based on structural strength and tipping should not be relied upon as a capacity limitation.
- All capacities are for crane on firm, level surface. It may be necessary to have structural supports under the outrigger floats or tyres to spread the load to a larger bearing surface.
- When either boom length or radius or both are between values listed, the smallest load shown at either the next larger radius or boom length shall be used.
- For outrigger operation, all outriggers shall be fully stretched & jacks extended to raise tyres free of the ground & the slew plinth becomes horizontal before raising the boom or lifting loads.
- The machine is equipped with front jack, the front jack cylinder shall be set along with the four outriggers.
- Tyres shall be inflated to the recommended pressure. Damaged tyres are hazardous for safe operation of crane.
- Lifting over-side on rubber is not permitted. Outrigger beams must be fully extended and stabilizers properly set when rotating superstructure over the side.
- Load ratings are based on freely suspended loads. No attempt shall be made to move a load horizontally on the ground in any direction.
- Handling of other equipment with the boom is not authorized except with equipment furnished and installed by TIL Ltd.
- Do not move the crane with boom extended or jib erected.
- 10.1m fixed and 17.1m tele length boom extensions may be used for double or single line lifting service.
- BOOM EXTENSION WARNING:**
 For main boom length greater than 33.8m with 10.1m fixed and 17.1m tele length boom extensions in working position, the boom angle must not be less than 40°, since loss of stability will occur causing a tipping condition. The boom angle is not restricted for main boom length equal to or less than 33.8m. The warning also applies for boom extension erection purposes.

WARNING: Outrigger beams must be fully extended and stabilizers properly set when rotating superstructure over side. Do not rotate superstructure while on rubber.



Dimensions are for largest furnished hook block with anti-two block activated.

Carrier Specification

CARRIER

8x4 wheel, right hand drive, purpose-built, heavy duty carrier frame of torsion box section with integral front & rear outrigger housing fabricated from high strength steel plates and sections.

OUTRIGGERS

Hydraulically operated outrigger system, comprising four independently controlled hydraulic telescopic horizontal beams with vertical jacks for over side & over rear operation. Plus one vertical hydraulic jack mounted under front of carrier to permit 360° lifting duties. Outrigger hydraulic jacks are fitted with positive lock valves. Easy fit outrigger feet are provided with stowage facility on carrier.

OUTRIGGER CONTROLS

Located on both side of the chassis, requires two hand operation. Crane level indicator adjacent to controls.

ENGINE

Ashok Leyland H6ETICRC3R325

165 kW @ 2500 RPM

Max. Torque : 800 Nm @ 1700 - 1900 RPM

Emission : BS III CEV

CLUTCH

Dry single plate hydraulically operated servo assisted.

GEAR BOX

Synchromesh, 9 forward & 1 reverse speed obtained via a single lever control.

DRIVE CONFIGURATION

8 x 4

AXLES

Front Axle – 2 beam type non-drive steer axles, leaf spring mounted in tandem.

Rear Axle – 2 Heavy duty, fully floating type with hub reduction, twin axle. Air operated inter axle differential lock. Mounted on specially designed rocker beam to allow maximum articulation on uneven ground.

STEERING

Front axles, mechanical with hydraulic power assist controlled by steering wheel from driver's cab.

Turning Circle Diameter - 23.8 m

BRAKES

Service - Air operated on all wheels by means of foot operated pedal in driver's cab.

Parking - Flick-valve operated, spring actuated pneumatically released brake on trailing front axle and leading rear axle.

FUEL TANK

Capacity – 300 litres.

WHEELS & TYRES

Tyres 12.00 x 20-18 single on front axles and twins on rear axles.

Spare wheel (one) provided for front axle.

DRIVER'S CAB

Two man design, steel construction full width cab with electric fan, interior light, horn, operating windows fitted with toughened glass. Two lockable doors, electric windscreen wiper in front of windscreen. Upholstered and adjustable operator's seat. Automotive controls include steering wheel, pedals for clutch, brake and accelerator.

INSTRUMENTATION

Air pressure gauge, engine oil pressure gauge, fuel gauge, water temperature gauge, speedometer, voltmeter, tacho-hourmeter, warning lights and switches for control.

ELECTRICAL EQUIPMENT

24-Volt starting and lighting system includes two combined dipping head lamps, side, rear and stop lamp, flashing direction indicator.

MISC. STANDARD EQUIPMENT

Beacon Lights

3 point seat belt in driver's cab

Boom base light

Front and Rear Tow Hook

Mobile charging Point in driver's cabin

1 no. Fire Extinguisher

First - Aid box

Full Deck Platform

Lockable Tool Box

Tool Box with Tool Kit For normal maintenance

MAXIMUM SPEED

47 km/hr

GROSS VEHICLE WEIGHT AND AXLE LOADS (approx)

Front Axles - 16,280 kg

Rear Axles - 25,990 kg

GVW - 42,270 kg

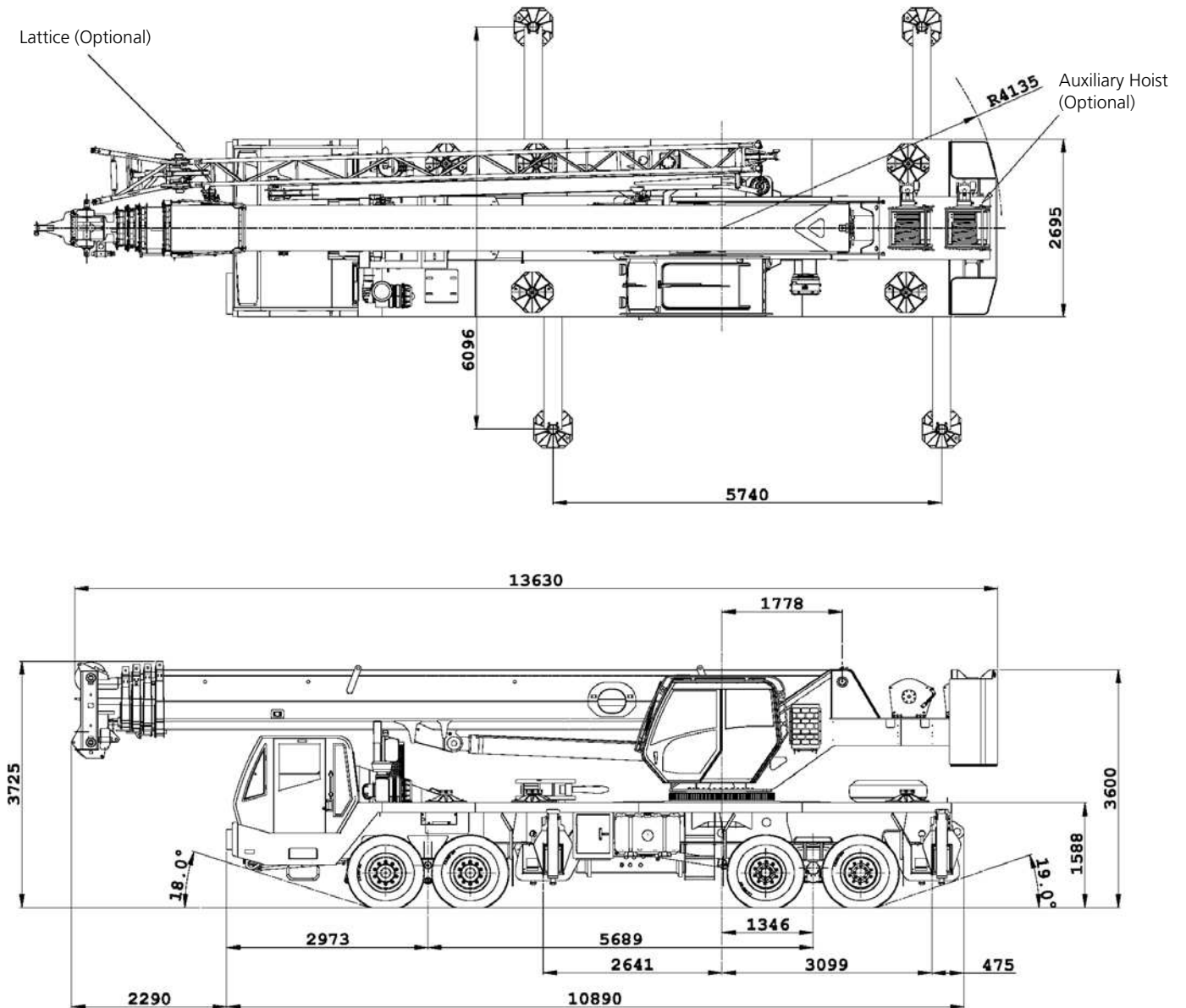
WEIGHTS FOR OPTIONAL ITEM (approx.)

Auxiliary Hoist : 700 kg

10.1m Fixed Lattice : 800 kg

17.1m Tele Lattice: 1200 kg

G.A Drawing



Dimensions in mm

Constant improvement and engineering progress make it necessary that we reserve the right to make specification, equipment and price changes without notice. The photographs/drawings in this document are just for illustrative purpose which may include optional equipment and accessories, which can be provided at an additional cost on request.

TIL Limited

CIN: L74999WB1974PLC041725

Registered & Corporate Office:

1, Taratolla Road, Garden Reach, Kolkata - 700024
Phone: + 91 33 2469 3732-6 / 6497 | 6633 2000 / 2845
Mobile: +91 9831839025 | +91 9831054573
Fax: + 91 33 2469 2143 / 3731
Email: Mhg.Er@tilindia.com | mktg-til@tilindia.com



CHENNAI

TIL Limited
Jhaver Plaza, 7th Floor 1-A Nungambakkam
High Road
Chennai 600 034, Tamil Nadu
Phone: +91 044 6670 3000 / 3010
Mobile: +91 9618562333 | +91 9790973502
Fax: +91 44 2827 9681
Email: chennai.til@tilindia.com

DELHI NCR

Plot 11, Site No.IV
Sahibabad Industrial Area
Ghaziabad 201 010 U.P.
Phone: +91 120 277 8735 / 8736 / 7468
Mobile: +91 9971091610 | 9903842544
Fax: +91 120 277 7467
Email: MHGMarketing.Sahibabad@tilindia.com | mhgcs.Sahibabad@tilindia.com

DELHI

TIL Limited
302 Ansal Bhawan
16, Kasturba Gandhi Marg, New Delhi 110 001
Phone: +91 11 2331 1607 / 8046 / 9248 | 2335 0250 / 0255
Fax: +91 11 2331 3263
Email: til.delhi@tilindia.com

KAMARHATTY

TIL Limited
517, Barrackpore Trunk Road
Kolkata 700 058
Phone: +91 33 2553 1352 / 1882 | 6633 4000
Fax: +91 33 2553 2546 / 5971
Email: MktDept.KMT@tilindia.com | til.kmt@tilindia.com

KHARAGPUR

TIL Limited
Vill. & P.O. Changual, Kharagpur
Dist: Paschim Medinipur 721 301, West Bengal
Phone: +91 32 2266 1101

MUMBAI

TIL Limited
A - 606, A Wing, 6th Floor,
215 Atrium, Andheri - Kurla Road,
Andheri - East, Mumbai - 400059, Maharashtra
Mobile: +91 8850971609
Phone: + 91 22 4969 1169

TIL has a pan-India network of offices with service engineers located in the close proximity of jobsites.

Toll Free No: **1800 266 1535**

www.tilindia.in

Technical Specification TIL/TMS860/1019. This cancels Technical Specification TIL/TMS860/0318