

PERFORMANCE

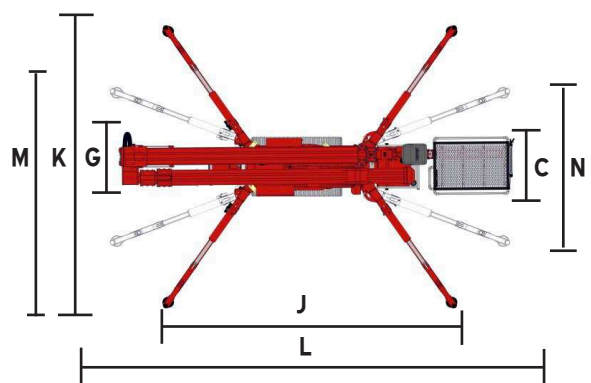
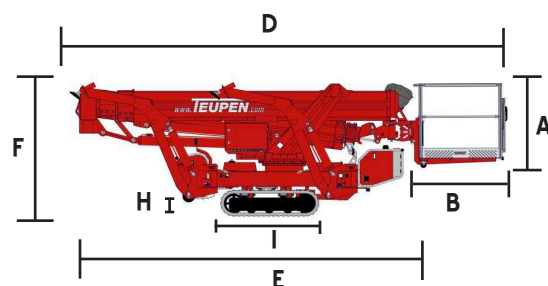
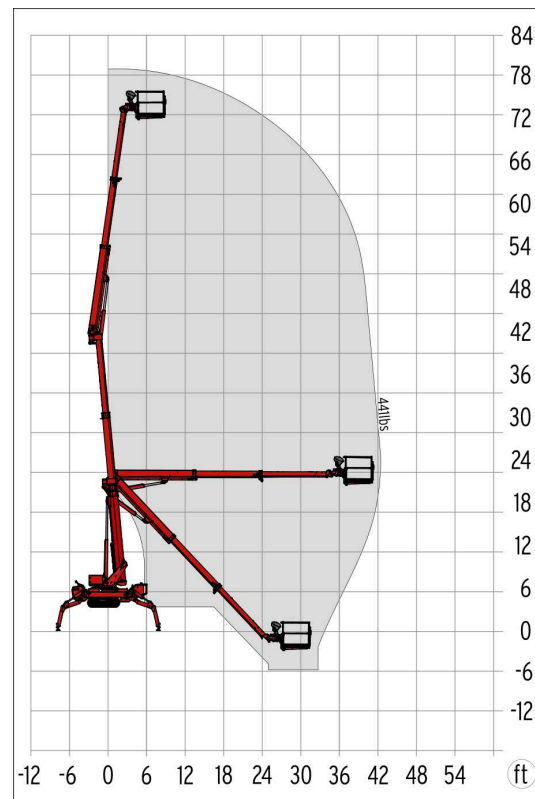
Platform Height, max	72 ft
Horizontal Outreach with 250 lbs	39 ft 4 in
Up and Over Clearance, max	41 ft 8 in
Basket Capacity	551 lbs
Moveable Jib	-
Basket Rotation	180°
Turret Rotation	450°
Height and Width Track Adjustment	7 in / 1 ft 6 in
Gradeability, max	16.7° / 30.0%
Slope Angle	19° / 34.0%
Travel Speed	2.5 mph

MEASUREMENTS

Platform Height (A)	3 ft x 7 in
Platform Length (B)	3 ft x 11 in
Platform Width (C)	2 ft x 8 in
Overall Length (D)	20 ft x 12 in
Length Without Basket (E)	16 ft 7 in
Height, Travel Position (F)	6ft 6 in
Minimum Width (G)	3 ft 3 in
Maximum Ground Clearance (H)	1 ft 5 in
Track L x W (I)	4 ft 9 in x 8 in
Length Outrigger Footprint, Standard (J)	15 ft 5 in
Width Outrigger Footprint, Standard (K)	15 ft 5 in
Length Footprint, one side narrow (L)	20 ft 8 in
Width Footprint, one side narrow (M)	12 ft
Width Footprint, both sides narrow (N)	8 ft 8 in
Total Weight	7275 lbs
Live Load in Traveling Position	105.7 lbs per square foot
Live Load in Working Position	35.9 lbs per square foot

POWER

Standard Power Sources	1) Electric: 115 V, 19.3 A, 1.6 kW 2) Diesel: Kubota Z 602, 14.5 hp
Optional Power Sources	Li-Ion Battery; 48 V



CHASSIS

- Powerful track drive with hydraulic braking system
- Hydraulically adjustable height and width track chassis
- Indoor non-marking rubber track with low profile tread depth, for smoother travel
- Sensitive electrohydraulic remote control
- 2 LED headlights on 10-30 V engine unit
- Protective cover over control box

STABILIZATION

- Fully-hydraulic, automatic levelling system with outrigger setup monitoring
- Variable outrigger system with one side narrow or both sides narrow setup options
- Wear resistant, anti-friction PVC outrigger feet
- 4 outrigger footing pads
- 4 covers on piston rod (outrigger stabilization) cylinders

BOOM SYSTEM

- Telescoping upper and lower booms
- All functions are available from one control panel
- Robust, lockable control panel with integrated operation and display control
- Self-levelling platform with electro-hydraulic levelling system
- Corner-mounted, 180° rotating basket
- Boom rotation via high-performance slew ring, worm gear and hydraulic motor
- Coming home function
- Electric emergency lowering

POWER

- 115 V electric motor
- Kubota Z602 Diesel Engine, 14.5 hp
- 2.91 gallon fuel tank capacity
- Start/Stop switch of combustion engine in the basket

PRODUCTIVITY, SAFETY, QUALITY

- 115 V power outlet in the basket
- Modular basket with eyelets for safety belts and tool tray
- High-quality paint in RAL 3020 (red)
- Hydraulic emergency lowering via hand pump
- Cables and hoses are safely routed through boom structure
- Biodegradable hydraulic oil
- Lock valves - hydraulic return valves on all hydraulic cylinders
- Relief valves protecting the hydraulic system from high pressure
- Protective covers for oil-tank, emergency controls and connecting cables and hoses
- Hour meter
- Complete second control box on the chassis and error analysis with display
- Fuzzy IV control technology

OPTIONS

- 48 V Li-Ion battery instead of diesel engine
- Custom paintwork, one color, according to RAL scheme (except metallic coatings, signal - or special colors)
- Custom paintwork, two colors, according to RAL scheme (except metallic coatings, signal - or special colors)

CONTACT

Teupen USA
10701 Southern Loop Blvd
Pineville, NC 28134

Phone (704) 248 - 9888
Fax (704) 248 - 9889
info@teupen-usa.com