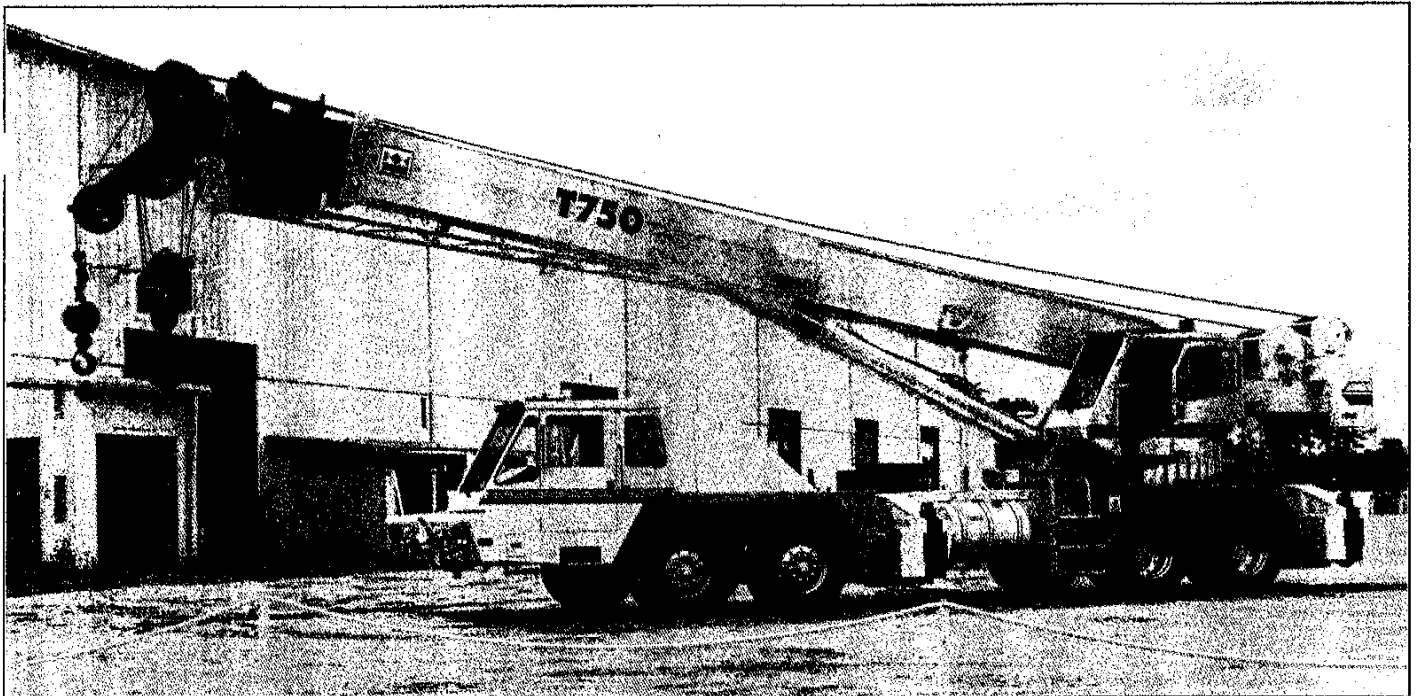


LIFTING DATA
85% USA

T 750

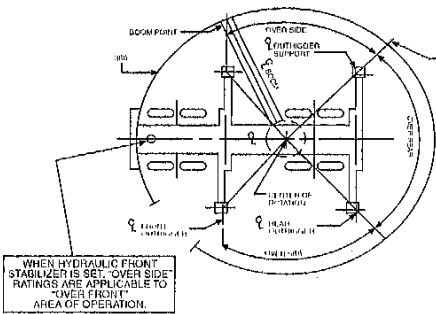
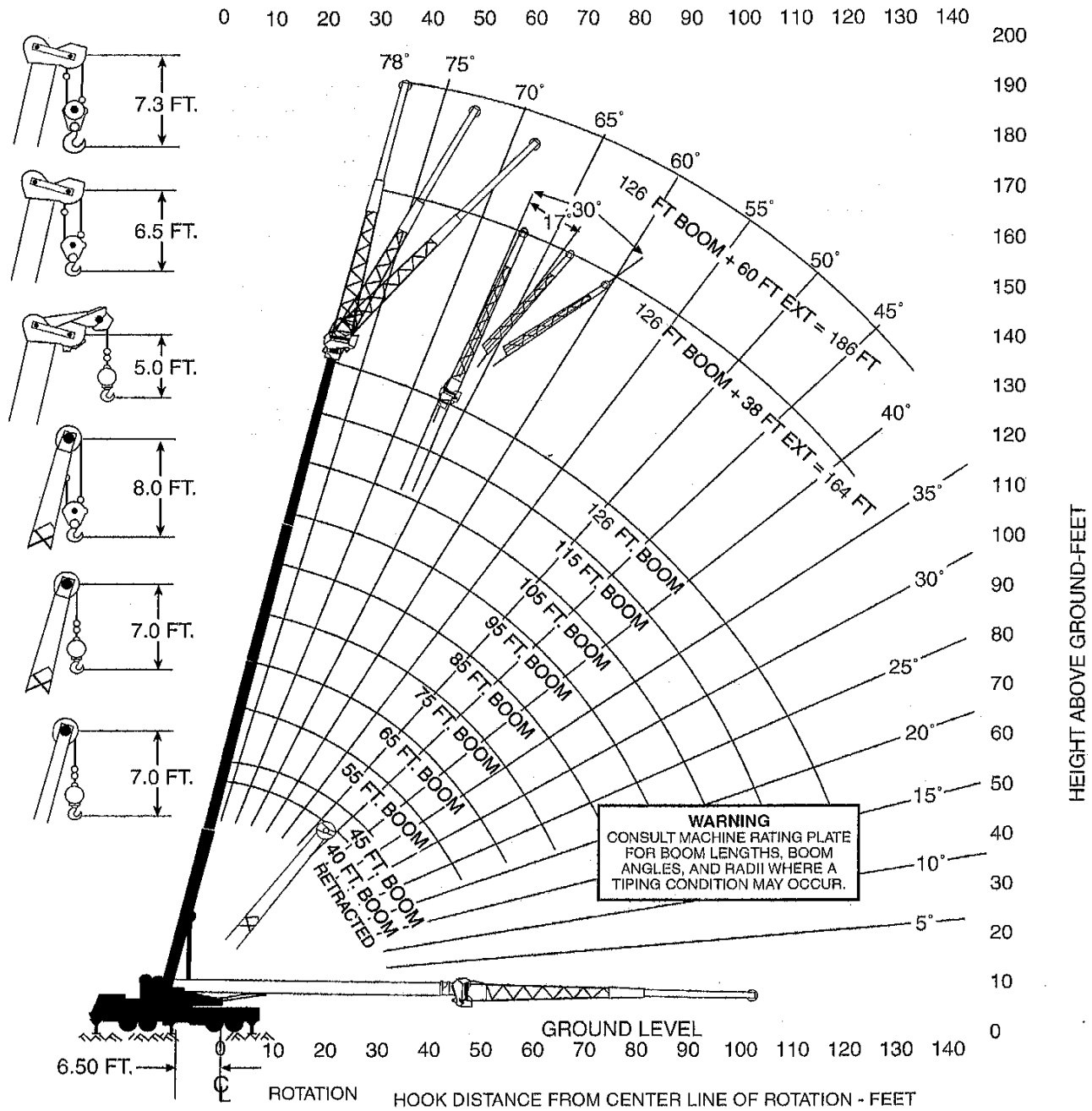
**75 Ton Capacity
Truck Crane**



 **TEREX CRANES, INC.**

T 750 RANGE DIAGRAM

RANGE DIAGRAM T 750 126' FULL POWER BOOM

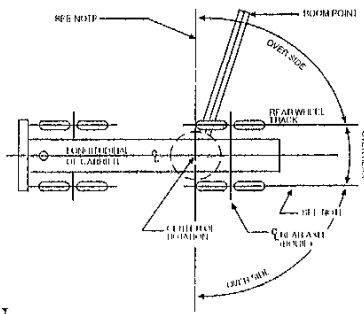


WHEN HYDRAULIC FRONT STABILIZER IS SET, "OVER-SIDE" RATINGS ARE APPLICABLE TO "OVER-FRONT" AREA OF OPERATION.

NOTE: These lines determine the limiting position of any load for operating within working areas indicated.

AREAS OF OPERATION

ON OUTRIGGERS



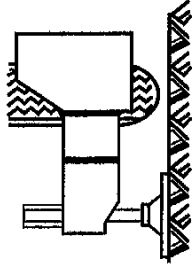
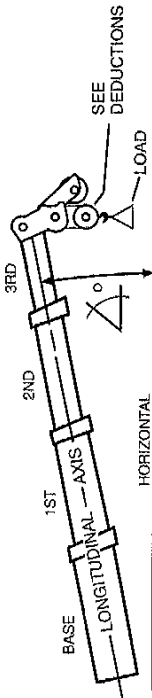
ON TIRES

This Lifting Data is for informational purposes only. Do not use to operate the crane; refer to the Operator's Manual and Crane Rating Information supplied with each crane.

RATED LIFTING CAPACITIES IN POUNDS

40.5 - 126 FT BOOM ON FULLY EXTENDED OUTRIGGERS - 360°
9700 POUND TOTAL COUNTERWEIGHT

9700 POUND TOTAL COUNTERWEIGHT



POWERED BOOM LENGTH IN FEET

LOAD RADIUS FT.	40.5 FT		45 FT		55 FT		65 FT		75 FT		85 FT		95 FT		105 FT		115 FT		126 FT			
	LOADED BOOM ANGLE Δ°	LOAD, LB SIDE	LOADED BOOM ANGLE Δ°	LOAD, LB SIDE	LOADED BOOM ANGLE Δ°	LOAD, LB SIDE	LOADED BOOM ANGLE Δ°	LOAD, LB SIDE	LOADED BOOM ANGLE Δ°	LOAD, LB SIDE	LOADED BOOM ANGLE Δ°	LOAD, LB SIDE	LOADED BOOM ANGLE Δ°	LOAD, LB SIDE	LOADED BOOM ANGLE Δ°	LOAD, LB SIDE	LOADED BOOM ANGLE Δ°	LOAD, LB SIDE	LOADED BOOM ANGLE Δ°	LOAD, LB SIDE		
10	68	150000	71	102000	74	95000															10	
12	65	116000	68	100000	72	94700	75	77800														12
15	60	82500	64	91700	69	89000	73	73200														15
20	51	69600	56	69500	63	69000	68	64000	71	55700	74	48200	76	40000								20
25	41	55600	48	55200	57	54600	63	54000	67	44500	70	39000	73	32400	75	31600	77	28200				25
30	28	44500	38	44700	50	45100	58	45000	63	35400	67	33400	67	29500	69	25800	72	23100	74	20500		30
35			25	34800	43	35400	52	35400	58	27600	63	27200	63	26700	66	23200	69	21000	72	18800		35
40					34	27300	46	27600	54	21900	55	22900	60	21900	63	21000	66	19200	69	17100		40
45					22	21600	39	21900	48	17700	50	18100	56	18300	60	18300	64	17500	67	15700		45
50							31	17700	43	14700	46	14800	52	15100	57	15100	61	15200	64	14800		50
55							29	14200	37	14700	40	12900	48	12600	53	12500	57	12600	61	12700		55
60							19	10000	19	10000	35	10200	43	10500	49	10500	54	10500	58	10600		60
65											28	8400	38	8800	46	8700	51	8700	56	8800		65
70											18	7000	33	7300	41	7200	47	7300	53	7400		70
75													26	6100	37	6000	44	6000	49	6100		75
80													17	5000	31	4900	40	5000	46	5000		80
85															25	3900	35	4000	43	4100		85
90															17	3100	30	3200	39	3300		90
95																						95
100																						100

ZERO DEGREE BOOM ANGLE LOADS (LB) / (RADI) (FT.)

LOAD RADIUS FT.	0	23000 (34.0)	0	18700 (38.5)	0	12300 (48.5)	0	8600 (58.5)	0	6300 (68.5)	0	4700 (78.5)	0	3200 (88.5)	0	0 (98.5)
10																
12																
15																
20																
25																
30																
35																
40																
45																
50																
55																
60																
65																
70																
75																
80																
85																
90																
95																
100																

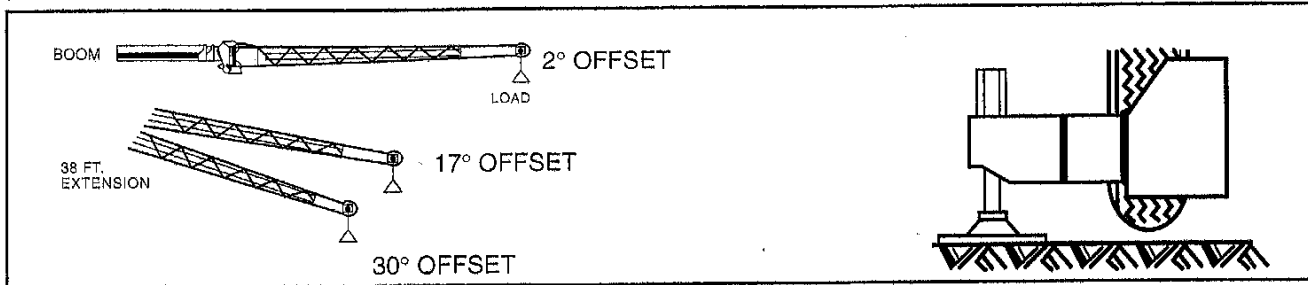
MIN. BOOM ANGLE (DEG) FOR INDICATED BOOM LENGTH (NO LOAD)	-2
MAX. BOOM LENGTH (FEET) AT -2 DEGREE BOOM ANGLE (NO LOAD)	105

This Lifting Data is for informational purposes only. Do not use to operate the crane; refer to the Operator's Manual and Crane Rating Information supplied with each crane.

RATED LIFTING CAPACITIES IN POUNDS

126 FT BOOM FULLY EXTENDED
 126 FT. BOOM PLUS EXTENSION
 FULLY EXTENDED OUTRIGGERS - 360°

9700 POUND TOTAL COUNTER WEIGHT



2 DEG EXT OFFSET WITH STINGER RETRACTED		REF. LOAD RADIUS FT.
FOR BOOM LENGTHS >128.0 FT - 164 FT		
LOADED BOOM ANGLE Δ°	LOAD, LB 360°	FOR 164 FOOT BOOM ONLY
77	11200	40
75	10500	45
74	9900	50
72	9300	55
70	8800	60
68	8300	65
67	7800	70
65	7400	75
63	6900	80
60	5800	85
58	4800	90
53	3200	100

17 DEG EXT OFFSET WITH STINGER RETRACTED		REF. LOAD RADIUS FT.
FOR BOOM LENGTHS >128.0 FT - 164 FT		
LOADED BOOM ANGLE Δ°	LOAD, LB 360°	FOR 164 FOOT BOOM ONLY
77	8700	50
75	8400	55
73	8000	60
72	7700	65
70	7300	70
68	6900	75
66	6500	80
64	6200	85
61	5600	90
56	3800	100
51	2400	110

30 DEG EXT OFFSET WITH STINGER RETRACTED		REF. LOAD RADIUS FT.
FOR BOOM LENGTHS >128.0 FT - 164 FT		
LOADED BOOM ANGLE Δ°	LOAD, LB 360°	FOR 164 FOOT BOOM ONLY
77	6800	55
75	6500	60
74	6400	65
72	6200	70
70	6000	75
68	5800	80
66	5700	85
63	5500	90
59	4300	100
53	2800	110

2 DEG EXT OFFSET WITH STINGER EXTENDED		REF. LOAD RADIUS FT.
FOR BOOM LENGTHS >150.0 FT - 186 FT		
LOADED BOOM ANGLE Δ°	LOAD, LB 360°	FOR 186 FOOT BOOM ONLY
77	7100	45
76	6800	50
75	6600	55
73	6300	60
72	6100	65
70	5700	70
68	5500	75
67	5300	80
65	5200	85
64	5100	90
60	4600	100
56	3300	110
51	2200	120

17 DEG EXT OFFSET WITH STINGER EXTENDED		REF. LOAD RADIUS FT.
FOR BOOM LENGTHS >150.0 FT - 186 FT		
LOADED BOOM ANGLE Δ°	LOAD, LB 360°	FOR 186 FOOT BOOM ONLY
77	5000	60
76	4900	65
74	4600	70
72	4400	75
71	4200	80
69	4100	85
67	3900	90
64	3700	100
60	3400	110
56	2900	120
51	1900	130

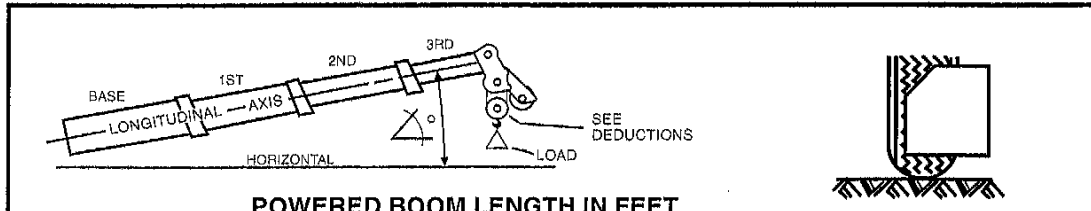
30 DEG EXT OFFSET WITH STINGER EXTENDED		REF. LOAD RADIUS FT.
FOR BOOM LENGTHS >150.0 FT - 186 FT		
LOADED BOOM ANGLE Δ°	LOAD, LB 360°	FOR 186 FOOT BOOM ONLY
77	3700	70
76	3600	75
74	3500	80
72	3300	85
70	3200	90
67	3100	100
63	3000	110
59	2700	120
54	2100	130

This Lifting Data is for informational purposes only. Do not use to operate the crane; refer to the Operator's Manual and Crane Rating Information supplied with each crane.

RATED LIFTING CAPACITIES IN POUNDS

40.5 - 75 FT BOOM ON TIRES
CREEP - OVER REAR

9700 POUND TOTAL COUNTER WEIGHT



POWERED BOOM LENGTH IN FEET

LOAD RADIUS FT.	40.5 FT		45 FT		55 FT		65 FT		75 FT		LOAD RADIUS FT.
	LOADED BOOM ANGLE Δ°	LOAD, LB REAR	LOADED BOOM ANGLE Δ°	LOAD, LB REAR	LOADED BOOM ANGLE Δ°	LOAD, LB REAR	LOADED BOOM ANGLE Δ°	LOAD, LB REAR	LOADED BOOM ANGLE Δ°	LOAD, LB REAR	
10	68	32600	70	32300	74	31600					10
12	65	29500	68	29200	72	28700	75	28200			12
15	60	25500	63	25400	69	25000	72	24600	75	24200	15
20	51	20400	56	20300	63	20100	67	19900	71	19600	20
25	41	16300	47	16300	57	16200	62	16100	67	15900	25

ZERO DEGREE BOOM ANGLE LOADS (LB) / (RADII (FT.))

0	9100 (34.0)	0	6700 (38.5)	0	3200 (48.5)	0	0 (58.5)		
---	----------------	---	----------------	---	----------------	---	-------------	--	--

MINIMUM BOOM ANGLE (DEG) FOR INDICATED BOOM LENGTH (NO LOAD)	-2
MAXIMUM BOOM LENGTH (FEET) AT -2 DEGREE BOOM ANGLE (NO LOAD)	65

TIRE SIZE	ROADING	CREEP
14.00R20	90	105
315/80R22.5	115	115
425/65R22.5	120	120

2080 MAIN & AUXILIARY HOIST REEVING 6 X 37										
.75 INCH (19mm) DIAMETER ROPE BREAKING STRENGTH 58800 LB. (26600 KG)										
PARTS OF LINE	1	2	3	4	5	6	7	8	9	10
MAXIMUM LOAD-LBS.	15000	30000	45000	60000	75000	90000	105000	120000	135000	150000
MAXIMUM LOAD-KGS.	6800	13600	20400	27200	34000	40800	47600	54400	61200	68100

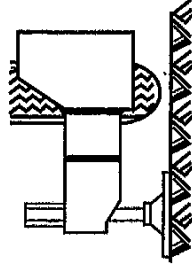
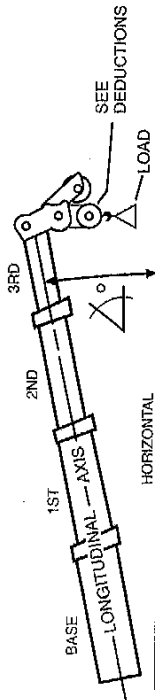
HOIST REEVING 8 X 19 ROTATION RESISTANT										
.75 INCH (19mm) DIAMETER ROPE BREAKING STRENGTH 51800 LB. (23500 KG)										
PARTS OF LINE	1	2	3	4	5	6	7	8	9	10
MAXIMUM LOAD-LBS.	10350	20700	31050	41400	51750	62100	72450	82800	93150	103500
MAXIMUM LOAD-KGS.	4600	9300	14000	18700	23400	28100	32800	37500	42200	46900

This Lifting Data is for informational purposes only. Do not use to operate the crane; refer to the Operator's Manual and Crane Rating Information supplied with each crane.

RATED LIFTING CAPACITIES IN POUNDS

40.5 - 126 FT BOOM ON FULLY EXTENDED OUTRIGGERS - OVER REAR
 9700 POUND TOTAL COUNTERWEIGHT LOAD MOMENT DEVICE (LMI) CODE # 04

9700 POUND TOTAL COUNTERWEIGHT



POWERED BOOM LENGTH IN FEET

LOAD RADIUS FT.	40.5 FT.		45 FT.		55 FT.		65 FT.		75 FT.		85 FT.		95 FT.		105 FT.		115 FT.		126 FT.		
	LOADED BOOM ANGLE Δ°	LOAD, LB REAR	LOADED BOOM ANGLE Δ°	LOAD, LB REAR	LOADED BOOM ANGLE Δ°	LOAD, LB REAR	LOADED BOOM ANGLE Δ°	LOAD, LB REAR	LOADED BOOM ANGLE Δ°	LOAD, LB REAR	LOADED BOOM ANGLE Δ°	LOAD, LB REAR	LOADED BOOM ANGLE Δ°	LOAD, LB REAR	LOADED BOOM ANGLE Δ°	LOAD, LB REAR	LOADED BOOM ANGLE Δ°	LOAD, LB REAR	LOADED BOOM ANGLE Δ°	LOAD, LB REAR	
10	68	150000	71	102000	74	95000															
12	65	116000	68	100000	72	94700	75	7800													
15	60	92500	64	91700	69	89000	73	73200	71	56700	74	48200	76	40000							
20	51	69600	56	69500	63	69000	68	64000	71	56700	73	48200	76	40000							
25	41	56600	48	55200	57	54600	63	54000	67	48500	70	42200	73	36300	75	31600					
30	28	44500	38	44700	50	45100	58	35400	63	35000	67	33400	70	32400	72	28800	74	25400	76	22500	30
35			25	36000	43	33600	52	35400	58	35000	63	33400	67	29500	68	25800	72	23100	74	20500	35
40					34	28300	46	28000	54	27800	59	27200	63	26700	66	23200	69	21000	72	18800	40
45					39	23700	49	23100	55	22500	60	21900	63	21000	66	19200	69	17100	72	15700	45
50					22	23300	31	19400	43	19700	50	18800	56	18000	60	18400	64	17500	67	15700	50
55							21	16200	37	16400	46	16500	52	16800	57	16700	61	16000	64	14800	55
60									29	13700	40	13900	48	14200	53	14100	58	14200	61	13600	60
65									19	11600	35	11700	43	12100	50	12000	54	12000	59	12100	65
70											28	9900	38	10300	46	10200	51	10200	56	10300	70
75											18	8400	33	8800	41	8600	44	8700	53	8800	75
80													26	7500	48	7300	44	7400	50	7500	80
85													17	6300	32	6200	40	6300	46	6300	85
90															25	5200	35	5300	43	5300	90
95															17	4300	30	4400	39	4500	95
100																	24	3600	35	3700	100
110																			25	2300	110

ZERO DEGREE BOOM ANGLE LOADS (LB) / (RADI) (FT.)

LOAD RADIUS FT.	0	23000 (34.0)	0	16700 (38.5)	0	12300 (48.5)	0	8600 (58.5)	0	6300 (68.5)	0	4700 (78.5)	0	3400 (88.5)	0	2500 (98.5)	0	0	0	0	0

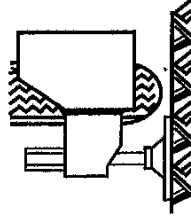
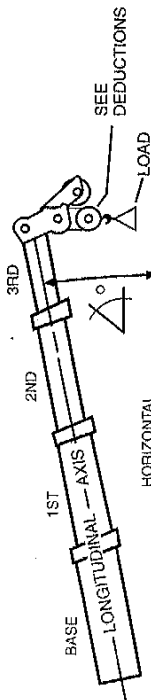
MIN. BOOM ANGLE (DEG) FOR INDICATED BOOM LENGTH (NO LOAD) -2
 MAX. BOOM LENGTH (FEET) AT -2 DEGREE BOOM ANGLE (NO LOAD) 126

This Lifting Data is for informational purposes only. Do not use to operate the crane; refer to the Operator's Manual and Crane Rating Information supplied with each crane.

RATED LIFTING CAPACITIES IN POUNDS

40.5 - 126 FT BOOM ON MID POSITION OUTRIGGERS - 360°
 9700 POUND TOTAL COUNTERWEIGHT

9700 POUND TOTAL COUNTERWEIGHT



POWERED BOOM LENGTH IN FEET

LOAD RADIUS FT.	40.5 FT.			45 FT.			55 FT.			65 FT.			75 FT.			85 FT.			95 FT.			105 FT.			115 FT.			126 FT.					
	LOAD	LOAD, LB	LOAD, LB	LOAD, LB	LOAD, LB	LOAD, LB	LOAD, LB	LOAD, LB	LOAD, LB	LOAD, LB	LOAD, LB	LOAD, LB	LOAD, LB	LOAD, LB	LOAD, LB	LOAD, LB	LOAD, LB	LOAD, LB	LOAD, LB	LOAD, LB	LOAD, LB	LOAD, LB	LOAD, LB	LOAD, LB	LOAD, LB	LOAD, LB	LOAD, LB	LOAD, LB					
10	68	150000	71	102000	74	95000																											
12	65	116000	68	100000	72	94700	75	77800																									
15	60	90800	64	91300	69	89000	73	73200	75	61000																							
20	51	49300	56	49300	63	49800	68	50100	71	50400	74	48200	76	40000																			
25	41	31400	47	31700	57	32200	63	32500	67	32700	70	32900	73	33000	75	33000	76	33000															
30	28	21800	38	22100	50	22500	57	22800	63	23000	66	23200	69	23400	71	23400	72	23400															
35			25	15900	43	16400	52	16700	58	16900	62	17000	66	17300	69	17300	71	17300															
40					34	12200	46	12500	53	12800	58	12800	62	13100	66	13100	69	13100															
45							39	9400	48	9600	54	9700	59	9900	63	9900	65	9900															
50							31	7000	43	7200	50	7300	55	7500	60	7500	63	7600															
55								20	5100	36	5300	45	5500	51	5800	56	5700	60	5700														
60									29	3800	40	4000	47	4300	52	4200	56	4200															
65										19	2500	34	2700	43	3100	49	2900	53	3000														

ZERO DEGREE BOOM ANGLE LOADS (LB) / (RADIUS (FT.))

LOAD RADIUS FT.	16500 (34.0)	12600 (38.5)	7200 (48.5)	3900 (58.5)	0 (68.5)
10	0	16500	0	7200	0
12					
15					
20					
25					
30					
35					
40					
45					
50					
55					
60					
65					

MIN. BOOM ANGLE (DEG) FOR INDICATED BOOM LENGTH (NO LOAD)	-2
MAX. BOOM LENGTH (FEET) AT -2 DEGREE BOOM ANGLE (NO LOAD)	75

This Lifting Data is for informational purposes only. Do not use to operate the crane; refer to the Operator's Manual and Crane Rating Information supplied with each crane.

NOTES: Operation on Outriggers

1. Read and understand all warnings and instructional notes.
2. Rated loads for fully extended outriggers do not exceed 85% of the tipping load as determined by SAE Crane Stability Test Code J765.
3. The tires shall be raised clear of the ground and free of crane weight before operating boom or lifting loads.
4. All outrigger beams must be extended to the same length; fully extended, mid position or fully retracted.
5. Rated lifting capacities above the bold line are based on the machine's hydraulic or structural competence and not on machine stability. Rated lifting capacities below the bold line are based on the machine's stability.
6. Rated lifting capacities include the weight of hook block, slings and auxiliary lifting devices. Their weight must be subtracted from the listed rated lifting capacity to obtain the net load to be lifted.
7. When lifting over the lattice extension the weight of any hook block, slings, and auxiliary lifting devices at the main boom head must be added to the load.
8. When the lattice extension is erected but unused add three (3) times the weight of any hook block, slings, and auxiliary lifting devices at the extension head to the load. Outriggers must be in the fully extended position when lifting at the main boom head with the lattice extension erected.
9. Add 150 lb. to the chart values if the auxiliary boom head sheave is not erected.
10. Extension rated lifting capacity is based on loaded main boom angle with reference to horizontal, regardless of main boom length. Reference radius is for fully extended main boom. For angles now shown, use the next lower boom angle to determine the allowable capacity.
11. Do not tip machine to determine allowable lifting capacities.
12. Handling of personnel is not permitted unless it is the least hazardous way to complete the job. Handling of personnel is only permitted in accordance with the Terex Cranes, Inc. policy guide and OSHA 1926-550.
13. Use of pile driving/extracting equipment is approved under the limitations and operating requirements stated in Terex Cranes, Inc. "Pile Driving/Extracting Policy" guide.

Operation on Tires

1. Crane lifting capacities on tires do not exceed 75% of the tipping load.
2. Crane lifting capacities on tires depend on tire capacity, condition of the tires and tire air pressure. Tires must be inflated to the recommended pressure before lifting.
3. Crane lifting capacities require lifting from main boom head only on a smooth and level surface.
4. Rated lifting capacities above the bold line are based on the machine's hydraulic or structural competence and not on machine stability. Rated lifting capacities below the bold line are based on the machine's stability.
5. For pick and carry operations, the boom must be centered over the rear of the machine, the mechanical swing lock engaged and the load must be restrained from swing.
6. Do not travel with boom extension erected.
7. Creep: Motion less than 200 feet (60 meters) in a 30 minute period and not exceeding 1 MPH (1.6 (KM/H)).
8. Maximum recommended boom angle on tires is 73° without load.
9. Lifting loads with erected boom extension is neither intended nor approved.
10. Operating pile driving/extracting equipment on tires is neither intended nor approved.

HOOK BLOCK WEIGHTS

15 Ton Ball Hook	467 Pounds
20 Ton 1 Sheave Hook	420 Pounds
75 Ton 5 Sheave Hook	1174 Pounds

13.6 M Ton Ball Hook	213 Kg
18.1 M Ton 1 Sheave Hook	190 Kg
68 M Ton 5 Sheave Hook	533 Kg

NOTE: These weights apply only to TEREX CRANES, INC. supplied equipment.

NOTE: All designs, specifications, and components of the equipment described are subject to change at the manufacturer's sole discretion at any time and without advance notice. Capacity charts and information printed here are only a guide and may not be complete. They should not be relied upon to operate the crane. The individual load charts and related lifting data on each crane must be understood and govern operation of the crane. Data published herein is informational in nature and shall not be construed to warrant suitability of the machine for any particular purpose as performance may vary with conditions encountered. The only warranty applicable is our standard warranty for this machine.

 **TEREX CRANES, INC.**

P.O. Box 260002 Hwy. 501 East/Atlantic Center Conway, SC 29528-2602 U.S.A.
(843) 349-6900 FAX (843) 349-7690

T 760 LIFT-1



Printed in USA