



TELEMATICS PLATFORM FOR ROUGH TERRAIN CRANES

The T-Link Telematics Platform, included on base unit, allows remote access of crane fleet operating data anytime, anywhere via the internet from your computer, smartphone or tablet.

► **Cost savings and increased of productivity**

Thanks to T-Link, cost savings and increased productivity can be achieved in all applications.

► **Better management of maintenance and technical assistance**

Remote monitoring delivers critical vehicle operating data and statistics. Routine maintenance can be scheduled more efficiently and unexpected issues are quickly addressed.

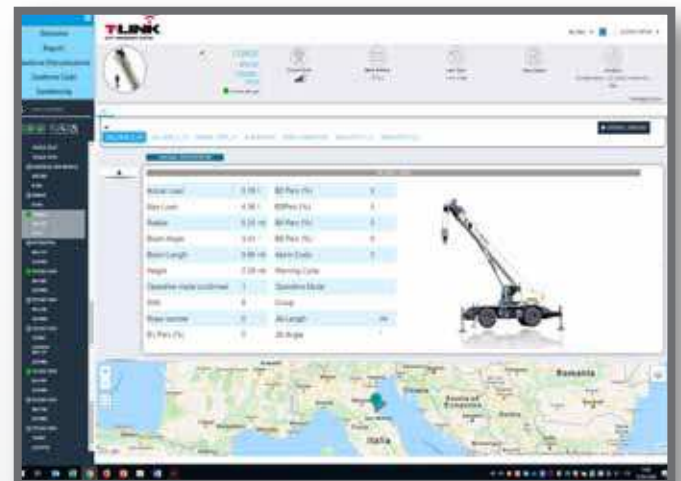
► **Fleet control**

Using the **Geofence** function, each crane's position is monitored, and the owner is notified in the event the crane leaves its set boundary.

► **Improved machine management, statistics and real-time data**

A wide range of **real-time operating data** and **fault-codes** are reported to assess fleet performance.

The machine's **Data logger** section collects detailed machine information, such as working hours, load lifting statistics, alarm history, etc.





TEREX CRANES

Rough Terrain Cranes

Via Cassoletta, 76 - loc. Crespellano
40053 Valsamoggia (BO)
Italy

Ph: +39 051 6501011
Email: mktg.cranes@terex.com

Tower Cranes

Via delle Innovazioni, 17
33074 Fontanafredda (PN)
Italy

Ph: +39 0434 989111
Email: mktg.cranes@terex.com



www.terex.com/cranes



Brochure Reference: RT-FL-E-TLI -09/21

WORKS FOR YOU.™

Courtesy of CraneMarket.com