

2

18 TON CRANE

# TEREX CD 118

rough terrain crane  
18 ton capacity

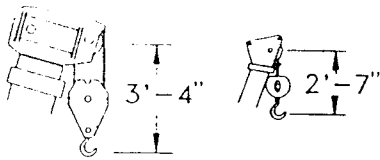
## range diagram & lifting capacities

### REDUCTION IN MAIN BOOM CAPACITY

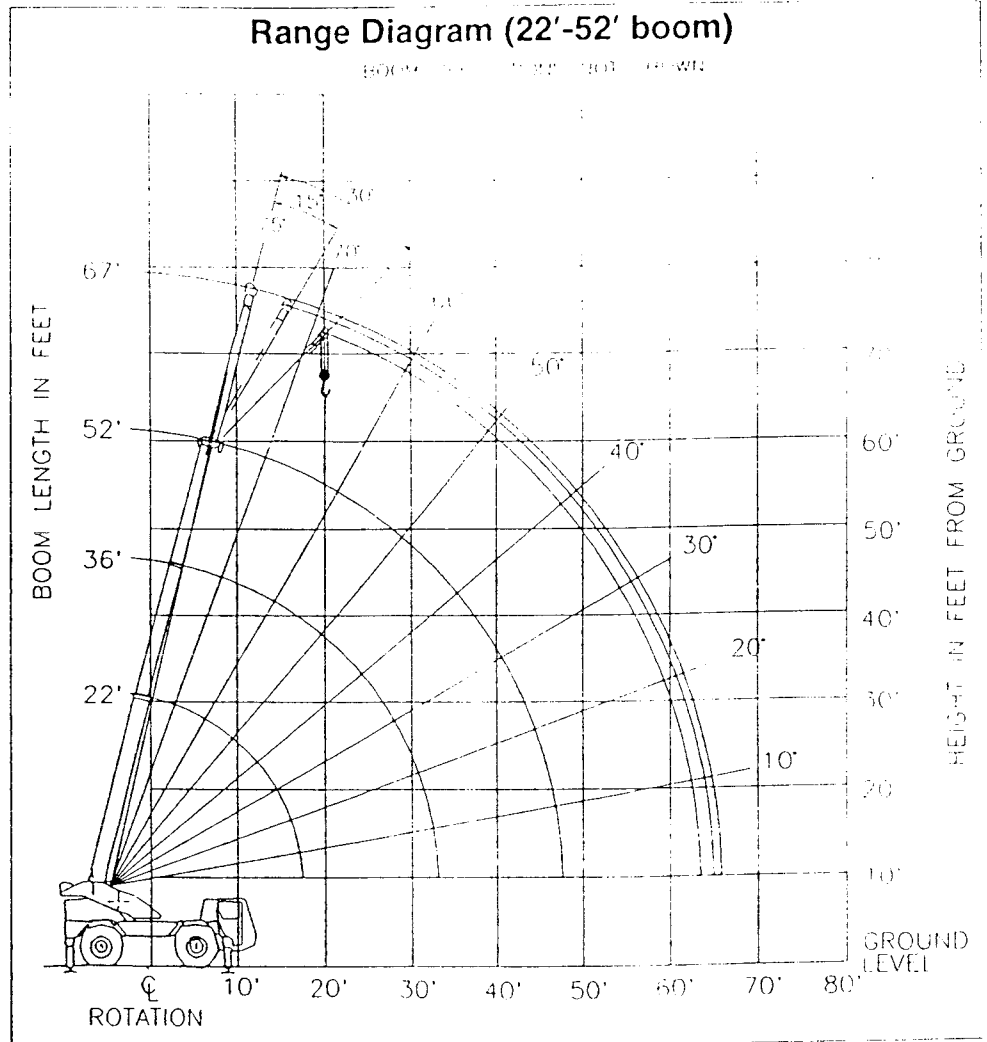
All Jibs in Stowed Position	0 Lbs.
15' Jib Erected	500 Lbs.

### HOOK BLOCK WEIGHTS

Hook & Ball	121 Lbs.
Hook Block (2 Sheave)	325 Lbs.
Hook Block (3 Sheave)	350 Lbs.



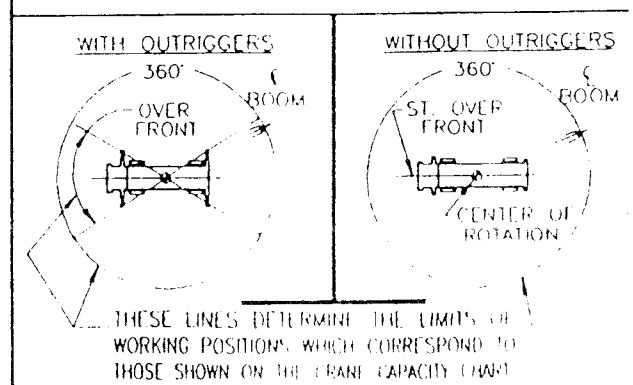
Dimensions are for largest factory furnished hook block and hook & ball, with anti-two block activated.



### CD 118 TURNING CIRCLES

	2-Wheel Steer	4-Wheel Steer
Turning Radius	22' 4"	14' 10.5"
Curb Clearance Circle (Over 15.00 x 22.5 Tires)	45' 11.5"	31' 0.5"
Machine Clearance Circle (Over Boom Head)	49' 0"	34' 2"
(Over Stowed Jib)	50' 7"	35' 9"

### CRANE WORKING POSITIONS



# Lifting Capacities — Pounds

## (22'-52' boom)

18700 CD

MODEL CD 118

CONCRETE WALLS	1000 LBS	STABILITY PERCENTAGE	
BOOM LENGTH	150 FT	ON OUTRIGGERS	85%
OUTRIGGER CAPACITY	30 TONS	ON TILES	75%
		ON SLABS	50%

**CAUTION:** Do not use this specification sheet as a load rating chart. The format of data is not consistent with the machine chart and may be subject to change.

### ON OUTRIGGERS

LOAD RADIUS (FT)	BOOM LENGTH 22 FT			BOOM LENGTH 36 FT			BOOM LENGTH 52 FT			LOAD RADIUS (FT)
	LOADED BOOM ANGLE (DEG)	OVER FRONT (LB)	360° (LB)	LOADED BOOM ANGLE (DEG)	OVER FRONT (LB)	360° (LB)	LOADED BOOM ANGLE (DEG)	OVER FRONT (LB)	360° (LB)	
5	75.0	36,000*	36,000*							5
6	64.5	30,000*	30,000*							6
8	58.4	28,400*	28,400*	71.3	26,500*	26,500*				8
10	51.9	23,100*	23,100*	67.9	23,200*	22,900*				10
12	44.6	18,800*	18,800*	64.4	19,200*	18,700*				12
15	31.0	14,500*	14,500*	58.8	14,900*	14,500*	69.0	15,000*	14,700*	15
18				52.9	12,000*	11,700*	65.4	12,100*	11,800*	18
20				48.7	10,500*	10,200*	62.9	10,700*	10,400*	20
25				36.4	7,900*	7,400*	56.4	8,000*	7,600*	25
30				17.5	6,100*	5,400*	49.4	6,300*	5,600*	30
35							41.4	5,000*	4,200*	35
40							31.8	3,900*	3,300*	40
45							17.9	3,100*	2,600*	45
50										50

\*\* MAXIMUM CAPACITY AT 0 DEGREE BOOM ANGLE

BOOM LENGTH 22 FT			BOOM LENGTH 36 FT			BOOM LENGTH 52 FT		
LOAD RADIUS (FT)	OVER FRONT (LB)	360° (LB)	LOAD RADIUS (FT)	OVER FRONT (LB)	360° (LB)	LOAD RADIUS (FT)	OVER FRONT (LB)	360° (LB)
17.5	8,500*	8,500*	31.3	4,500*	4,500*	47.1	2,500*	2,300*

### ON TIRES

RADIUS (FT)	MAX BOOM LENGTH (FT)	15.00 X 22.5-16PR				RADIUS (FT)
		STATIONARY		PICK & CARRY		
		360°	STRAIGHT OVER FRONT	CREEP	2.5 MPH	
6	22	15,500*				6
8	22	13,300*				8
10	22	10,300*	15,500*	12,300*	10,100*	10
12	36	8,300*	13,300*	10,500*	8,600*	12
15	36	6,300*	9,900*	8,500*	6,900*	15
18	52	4,900*	7,300*	7,000*	5,600*	18
20	52	4,000*	6,200*	6,200*	5,000*	20
25	52	2,700*	4,300*	4,300*	3,800*	25
30	52	2,000*	3,100*	3,100*	2,900*	30
35	52	1,400*	2,400*	2,400*	2,300*	35
40	52	1,000*	1,800*	1,800*	1,800*	40
45	52	700*	1,400*	1,400*	1,400*	45

Note: For On Tires Capacities:

- A. For Pick and Carry Operations, boom must be extended to the end of the machine.
- B. The load should be restrained from swinging.
- C. Creep speed is crane movement of less than 10 mph (16 km/h) (excluding 1.0 mph (1.6 km/h)).
- D. Refer to general Notes for additional information.
- E. Without outriggers, never increases the boom length beyond the maximum applicable boom used to test for stability.

### SIDE STOW JIB ON OUTRIGGERS

LOADED BOOM ANGLE (DEG)	LOAD RADIUS (REF) (FT)	15 FT OFFSETTABLE JIB						LOADED BOOM ANGLE (DEG)
		0° OFFSET		15° OFFSET		30° OFFSET		
		360° (LB)	LOAD RADIUS (REF) (FT)	360° (LB)	LOAD RADIUS (REF) (FT)	360° (LB)	LOAD RADIUS (REF) (FT)	
75	16'-2"	5,500*	18'-4"	4,100*	21'-1"	3,400*	75	
73	18'-9"	5,500*	21'-1"	4,000*	23'-8"	3,400*	73	
71	21'-2"	5,400*	23'-9"	3,800*	26'-1"	3,200*	71	
68	24'-8"	5,400*	27'-5"	3,600*	29'-7"	3,100*	68	
65	27'-11"	5,000*	30'-10"	3,500*	32'-10"	3,000*	65	
62	31'-1"	4,700*	34'-0"	3,300*	35'-11"	2,900*	62	
59	34'-1"	4,400*	37'-0"	3,200*	38'-9"	2,800*	59	
55	37'-10"	4,000*	40'-4"	3,100*	41'-10"	2,700*	55	
51	41'-5"	3,500*	43'-5"	3,100*	44'-10"	2,600*	51	
47	44'-6"	3,000*	46'-5"	2,900*	47'-10"	2,600*	47	
43	47'-5"	2,700*	49'-1"	2,800*	50'-5"	2,500*	43	
38	51'-0"	2,300*	52'-3"	2,700*	53'-5"	2,400*	38	
32	54'-4"	2,000*	56'-0"	1,900*	56'-4"	1,900*	32	
25	57'-8"	1,800*	59'-0"	1,700*			25	
17	61'-1"	1,500*	61'-3"	1,500*			17	
0	63'-3"	1,400*					0	

Notes for Jib Capacities:

- 1. For all boom lengths, less than the maximum with a jib erected, the rated capacity is shown in the appropriate column.
- 2. For boom angles not shown, use the capacity of the next lower boom length.
- 3. Listed radii are for fully extended main boom only.

### RECOMMENDED TIRE PRESSURE

TIRE SIZE	STATIONARY	CREEP	2.5 MPH	TRAVEL
15.00 X 22.5-16PR	110 PSI	110 PSI	110 PSI	90 PSI

### MAXIMUM PERMISSIBLE HOIST LINE LOAD

WIRE ROPE	1	2	3	4	5
6X19 OR 6X37 HOPE	6,000	12,000	18,000	24,000	30,000
ROBARK® RESINATED HOPE	5,000	11,000	17,000	23,000	29,000
BOOM HEAD	1	1.1	1.2	1.3	1.4
HOOK BLOCK	1	1	1.1	1.2	1.3