

### DIESEL ENGINE

Manufacturer & type	Deutz-BF6M 2012 C
Design	6-cylinder turbocharged
Engine output	153HP (114 kW)
Nominal speed	2,000 rpm
Displacement	372 cb in (6.1 l)
Cooling system	Water and charge air cooling (temperature controlled fan speed).
Emission standards	COM II/TIER II
Air filter design	Two-stage filter with safety valve.
Fuel tank	83 US gal (315 l)

### SWING SYSTEM

Ring gear	Internally toothed ring gear.
Drive	Multi-stage planetary gear with integrated multi-disc brake.
Uppercarriage swing speed	0 - 8 rpm

### UNDERCARRIAGE

<ul style="list-style-type: none"> <li>• Front axle: Rigid mounted steering axle for safe transport of loads, max. steering angle 30°.</li> <li>• Rear axle: Oscillating axle in planetary gear design with multi-disc brake and oscillating axle lock.</li> </ul>	
Stabilizers	4-point stabilizers
Tires	Solid rubber, elastic tires 8-fold 10.00-20

### ELECTRICAL SYSTEM

Operating voltage	24 V
Batteries	2 x 12 V / 100 Ah
Option	generator system 13 kW

### BRAKES

Service brake	Hydraulically controlled braking system acting on all four wheel pairs.
Parking brake	Hydraulically controlled single-circuit braking system acting on the 2-speed transmission.

### TRAVEL DRIVE

<ul style="list-style-type: none"> <li>• Hydrostatic drive through infinitely variable axial piston motor; travel brake valve mounted on travel motor providing wear-free braking.</li> </ul>	
Travel speed	12 mp/h (0 - 20 km/h)
Turning radius	27' (8.2 m)

### HYDRAULIC SYSTEM

<ul style="list-style-type: none"> <li>• Single-circuit hydraulic system with load-sensing and power management control for optimal use of the available engine output.</li> <li>• Separate oil cooler with large cooling surface, temperature controlled fan speed.</li> <li>• Hydraulic oil filters: Filter element incorporated in oil tank.</li> <li>• Central greasing system as standard.</li> </ul>	
Max. pump capacity	111 US gal/min (at 2,000 rpm) (420 l/min)
Max. operating pressure	4,640/5,220 psi (320/360 bar)
Hydraulic oil tank	87 US gal (330 l)

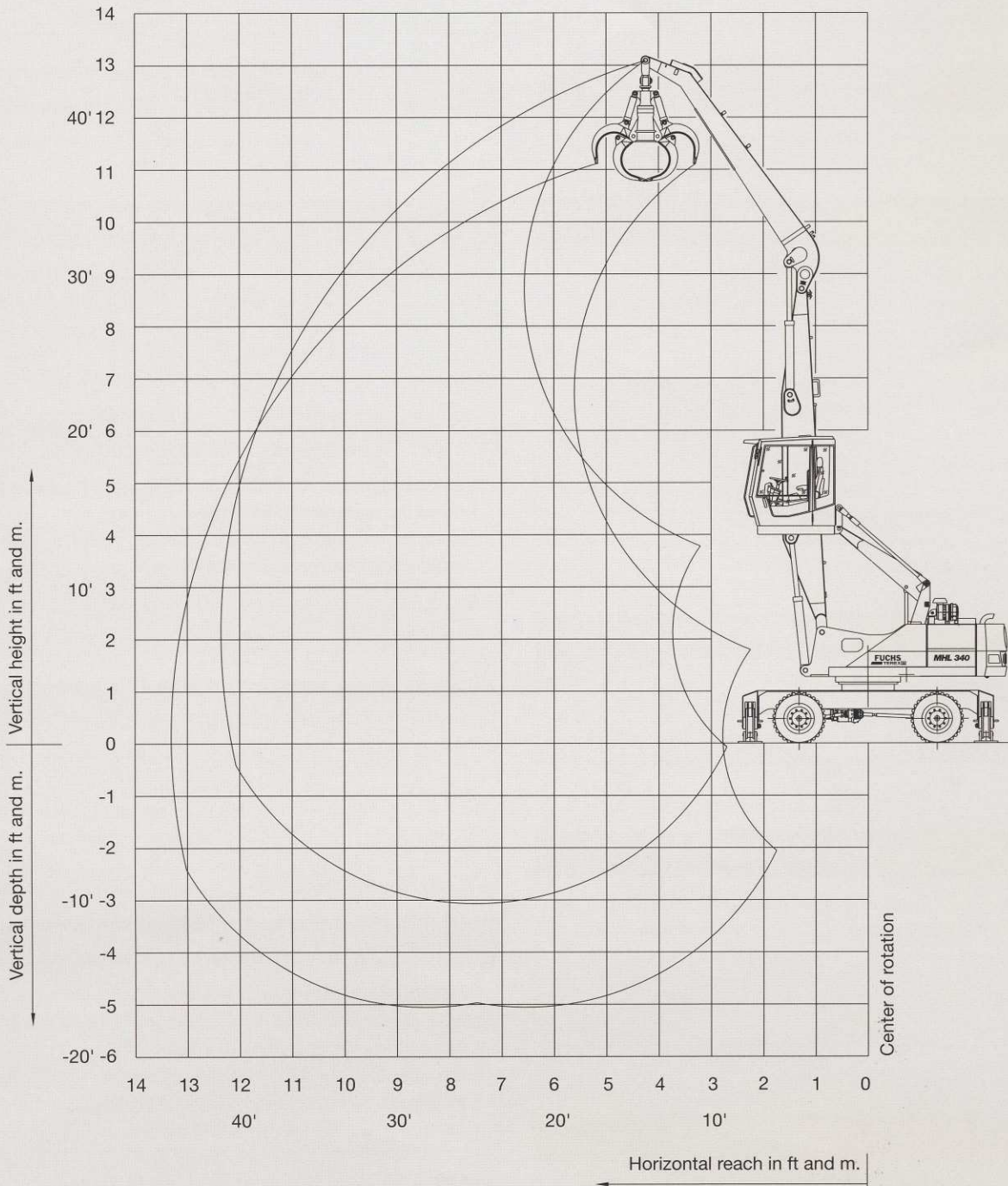
### OPERATING WEIGHTS

Basic machine including work equipment (including 0.6 m <sup>3</sup> /0.8 yd <sup>3</sup> cactus grab and generator system)	
Reach 41' (12.5 m)	55,115 lbs (25,000 kg)

**WORKING DIAGRAM**

MHL 340 (reach 41'/12.5 m)

- Work equipment: box-type boom 21'7"/6.6 m, dipperstick 17'4"/5.3 m.





## LIFTING CAPACITY

MHL 340 (reach 41'12.5 m)

• Work equipment: box-type boom 21'7"/6.6 m, dipperstick 17'4"/5.3 m.

Height in ft.	Undercarriage stabilizers	Reach in ft.					
		15	20	25	30	35	40
35	non supported			(9,200)			
	4-pt. supported			11,600* (11,600*)			
30	non supported			(9,400)	(6,700)		
	4-pt. supported			10,900* (10,900*)	10,500* (10,500*)		
25	non supported			(9,200)	(6,700)	(5,200)	
	4-pt. supported			10,900* (10,900*)	10,500* (10,500*)	8,300 (10,000*)	
20	non supported		(12,700*)	(9,200)	(6,700)	(5,000)	
	4-pt. supported		12,700* (12,700*)	11,800* (11,800*)	10,500 (10,700*)	8,300 (10,000*)	
15	non supported		(12,500)	(8,700)	(6,500)	(5,000)	(3,900)
	4-pt. supported		15,100* (15,100*)	12,900* (12,900*)	10,300 (11,600*)	8,100 (10,500*)	6,500 (8,500)
10	non supported	(18,000)	(11,600)	(8,300)	(6,300)	(4,800)	(3,900)
	4-pt. supported	24,400* (24,400*)	18,000* (18,000*)	13,400 (14,500*)	10,100 (12,300)	7,800 (10,500)	6,500 (8,500)
5	non supported	(16,400)	(10,900)	(7,800)	(6,100)	(4,800)	(3,700)
	4-pt. supported	29,000* (30,100*)	18,200 (20,800*)	12,900 (16,000*)	9,800 (12,900)	7,800 (10,300)	6,300 (8,300)
0	non supported	(14,900*)	(10,300)	(7,600)	(5,900)	(4,500)	(3,700)
	4-pt. supported	14,900* (14,900*)	17,500 (22,400*)	12,500 (16,900*)	9,600 (12,700*)	7,600 (10,000)	6,300 (8,300*)
-5	non supported	(14,500*)	(10,100)	(7,400)	(5,600)	(4,500)	
	4-pt. supported	14,500* (14,500*)	17,100 (23,100*)	12,300 (16,700*)	9,400 (12,700*)	7,600 (10,000)	
-10	non supported		(9,800)	(7,200)	(5,600)		
	4-pt. supported		13,600 (22,200)	12,300 (16,400*)	9,400 (12,500*)		

Height in m	Undercarriage stabilizers	Reach in m					
		4.5	6	7.5	9	10.5	12
10.5	non supported			(4.2)			
	4-pt. supported			5.3* (5.3*)			
9	non supported			(4.3)	(3.1)		
	4-pt. supported			5.0* (5.0*)	4.8* (4.8*)		
7.5	non supported			(4.2)	(3.1)	(2.4)	
	4-pt. supported			5.0* (5.0*)	4.8* (4.8*)	3.8 (4.6*)	
6	non supported		(5.8*)	(4.2)	(3.1)	(2.3)	
	4-pt. supported		5.8* (5.8*)	5.4* (5.4*)	4.8 (4.9*)	3.8 (4.6*)	
4.5	non supported		(5.7)	(4.0)	(3.0)	(2.3)	(1.8)
	4-pt. supported		6.9* (6.9*)	5.9* (5.9*)	4.7 (5.3*)	3.7 (4.8*)	3.0 (3.9)
3	non supported	(8.2)	(5.3)	(3.8)	(2.9)	(2.2)	(1.8)
	4-pt. supported	11.1* (11.1*)	8.2* (8.2*)	6.1 (6.6*)	4.6 (5.6)	3.6 (4.8)	3.0 (3.9)
1.5	non supported	(7.5)	(5.0)	(3.6)	(2.8)	(2.2)	(1.7)
	4-pt. supported	13.2 (13.7)	8.3 (9.5*)	5.9 (7.3*)	4.5 (5.9)	3.6 (4.7)	2.9 (3.8)
0	non supported	(6.8*)	(4.7)	(3.5)	(2.7)	(2.1)	(1.7)
	4-pt. supported	6.8* (6.8*)	8.0 (10.2*)	5.7 (7.7)	4.4 (5.8)	3.5 (4.6)	2.9 (3.8)
-1.5	non supported	(6.6*)	(4.6)	(3.4)	(2.6)	(2.1)	
	4-pt. supported	6.6* (6.6*)	7.8 (10.5*)	5.6 (7.6)	4.3 (5.8)	3.5 (4.6)	
-3	non supported		(4.5)	(3.3)	(2.6)		
	4-pt. supported		6.2 (10.1)	5.6 (7.5)	4.3 (5.7)		

## REMARKS

The values are stated in tons (t) or lbs. The pump pressure for this table is 5220 psi (360 bar). The values amount to 75 % of the static tipping load or 87 % of the hydraulic lifting force (marked \*), in accordance with ISO 10567. When the machine is standing on solid and levelground, these values apply to slewing operations through 360°. The values in brackets apply in the lengthwise direction of the undercarriage. The values specified "non-supported" only apply when the load is hoisted

above the front or rear axle. The weight of the attached load hoisting implement (grab, magnet, load hook, etc.) must be deducted from the carrying capacity values. If the FUCHS-TEREX quick-attach system is mounted on the boom, carrying capacity values are reduced by 661 lbs (300 kg).

### CAB

- Hydraulically height-adjustable cab with max. eye level of 18'5.5 m, human-engineered, functional design and excellent all-round visibility.
- Air-cushioned comfort seat with pneumatically adjustable lumbar support, safety belt and headrest. Seat heating available on request. The seat meets EC-safety and health requirements (Directive 89/392/EEC, Paragraph 3.2.2). Seat position, seat inclination and seat cushion multi-adjustable in line with position of armrests and pilot control units.
- 3-speed fan for hot water heating, 4 adjustable defroster nozzles.
- Up and over type front windshield, with pull-down sunblind; lift-up skylight on cab roof.
- Air conditioning as standard.
- Option: Cab with bullet-proofed glass.

### OFFICIAL HOMOLOGATION

- Certification according to CE-regulations.

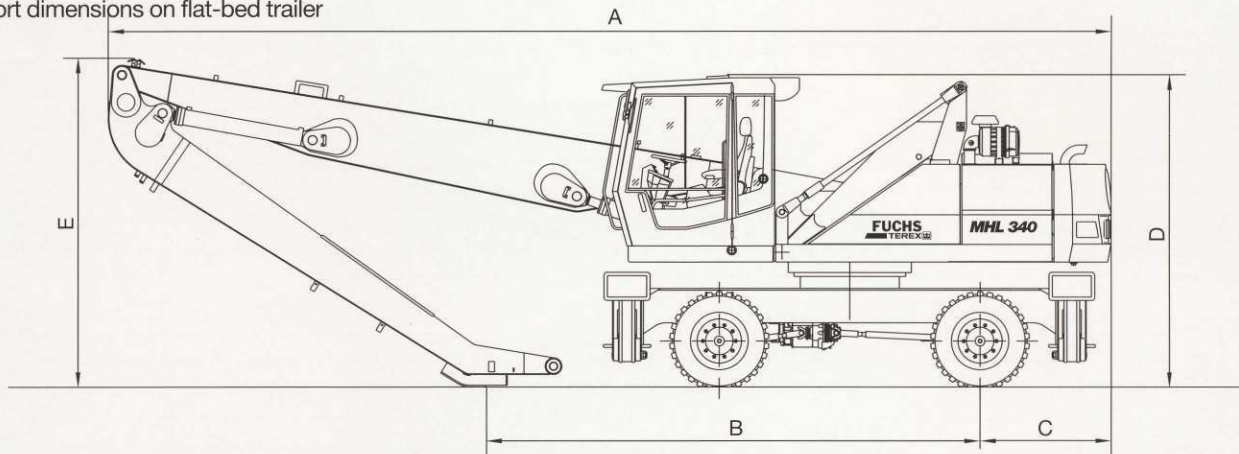
### GRABS

- 0.8 yd<sup>3</sup>/0.6 m<sup>3</sup> cactus grab with cast central case and enclosed swing drive, grab jaws with wear-resistant grab liners and tips.

### TRANSPORT DIMENSIONS

Dimension in/mm.	Reach 41'12.5 m
A	401"10.200 m
B	198"5.030 m
C	52"1.335 m
D	125"3.190 m
E	132"3.350 m

Transport dimensions on flat-bed trailer



#### TEREX Fuchs

8800 Rostin Road  
Southaven, MS 38671  
USA

TOLL FREE: 1-888-201-6008  
PHONE: 662-393-1800  
FAX: 662-393-1700  
WEB [www.terex.com](http://www.terex.com)  
EMAIL [fuchs@fuchsusa.com](mailto:fuchs@fuchsusa.com)