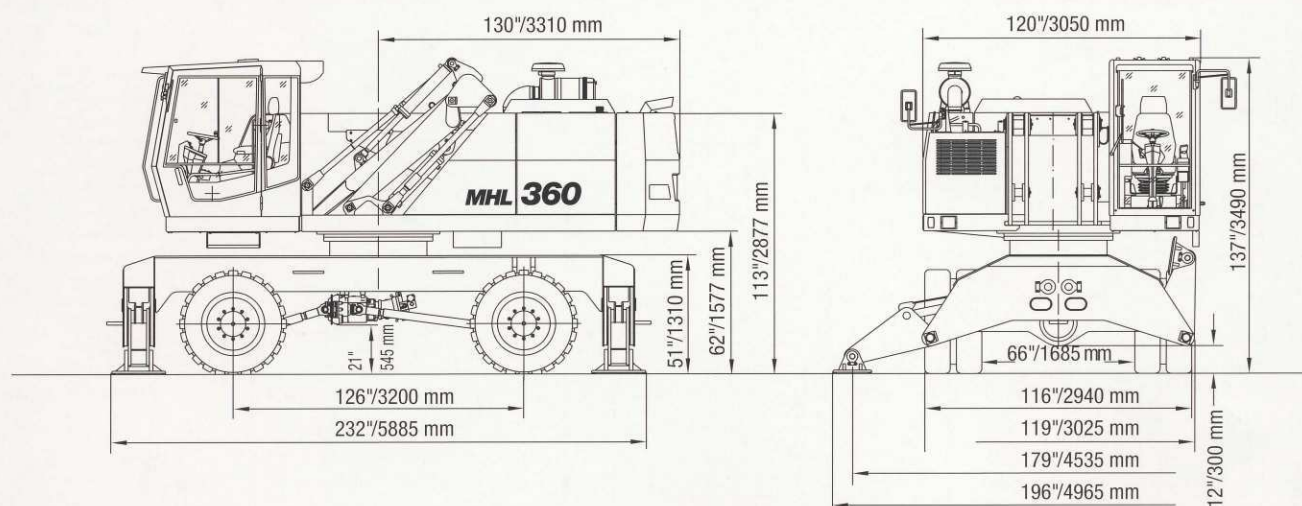


Loading Machines



Diesel Engine

Manufacturer and type	Deutz-BF6M 1013 FC
Design	6-cylinder turbocharged and charge air cooler.
Engine output	249 HP (186 kW)
Nominal speed	2,000 rpm
Displacement	433 cu in (7.1 l)
Cooling system	Liquid cooling, thermostatically controlled and charge air cooling.
Emission standards	COM II and TIER II
Air filter design	Two-stage filter with safety valve.
Fuel tank	118 US gal (450 l)

Electrical System

Operating voltage	24 V
Batteries	2 x 12 V / 100 Ah / 760 A (accor. to EN)
Lighting set	2 uppercarriage-mounted headlamps, 2 boom-mounted working floodlight, rear side-marker and turn signal lamps.
Option	Magnet system 20 kW or 30 kW

Travel Drive

► Hydrostatic drive through infinitely variable axial piston motor and directly mounted travel brake valves, two-speed power shift gear, 4-wheel drive.	
Travel speed / Gradeability	0 - 9.3 mph (0 - 15 km/h) / max. 45%
Turning radius	26' (8.0 m)

Operating Weights

Basic machine including work attachment, 4-point stabilizers and 0.8 m³ (1.04 yd³) cactus grab

Reach 16.5 m (54')	straight boom 95,900 lbs (43,500 kg)
Reach 18.0 m (59')	straight boom 97,000 lbs (44,000 kg)
Reach 18.0 m (59')	monobloc 97,000 lbs (44,000 kg)

Swing System

Ring gear	Internally toothed ring gear.
Drive	Three-stage planetary gear with integrated multi-disc brake.
Upper carriage swing speed	0 - 6 rpm

Superstructure

Front axle: Rigid mounted steering axle with integrated drum brake, max. steering angle 30°.

Rear axle: Oscillating rear axle with oscillating axle lock and integrated drum brake.

Stabilizers	4-point-stabilizers
Tires	Solid rubber, elastic tires 8-fold 12.00 -24

Brake System

Service brake	Hydraulic single-circuit braking system acting on all four wheel pairs.
Parking brake	Hydraulic disc brake on gear box acting on both front and rear axle.

Hydraulic System

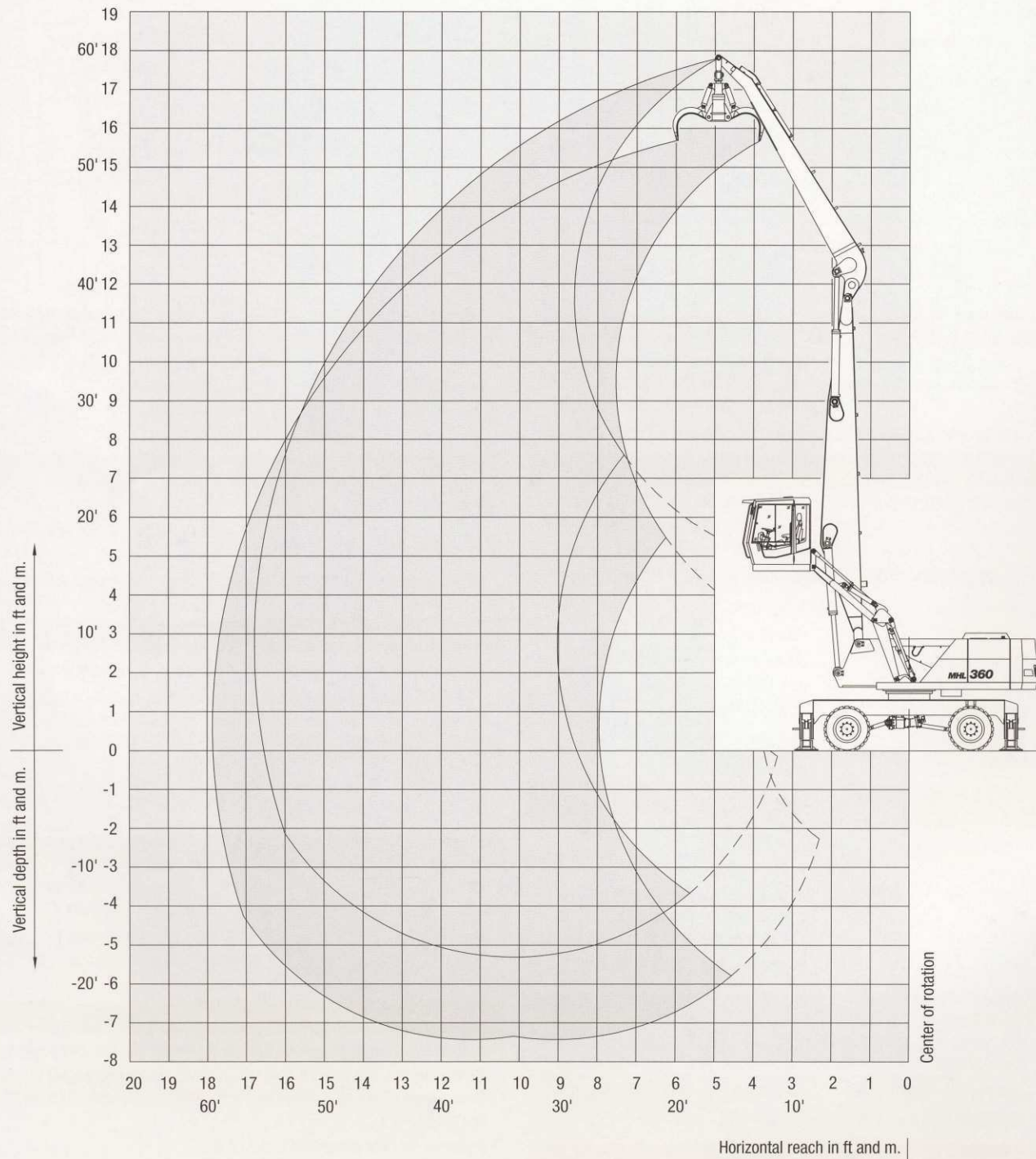
► Single circuit hydraulic system with load sensing function and power management control for optimal use of the available engine output.	
► Separate oil cooler with large cooling surface, temperature controlled fan speed.	
► Hydraulic oil filter integrated in the oil tank.	
► Central lubricating system as standard.	
► Regeneration function for lift cylinders: saves energy and increases the operating speed.	
Max. pump capacity	169 US gal/min (640 l) at 2,000 rpm
Max. operating pressure	5,221 psi (360 bar)
Hydraulic oil tank	206 US gal (780 l)



Working Diagram

MHL 360 reach 54' (16.5 m)

► Work equipment: box-type boom straight 29' (8.9 m), dipperstick 22' (7.0 m).



Lifting Capacity

MHL 360 reach 54' (16.5 m)

► Work equipment: box-type boom straight 29' (8.9 m), dipperstick 22' (7.0 m).

Height in ft.	Undercarriage stabilizers	15	20	25	30	35	40	45	50	55
50	non-supported				(17,637)	(13,448)				
	4-pt. supported				20,283* (20,283*)	13,889* (13,889*)				
45	non-supported				(18,298)	(13,889*)	(10,803)			
	4-pt. supported				19,842* (19,842*)	17,857* (17,857*)	13,889* (13,889*)			
40	non-supported				(18,519)	(14,110)	(11,023)	(8,598)		
	4-pt. supported				19,401* (19,401*)	17,417* (17,417*)	16,094* (16,094*)	11,905* (11,905*)		
35	non-supported				(18,298)	(14,110)	(11,023)	(8,818)		
	4-pt. supported				19,621* (19,621*)	17,637* (17,637*)	15,873* (15,873*)	13,448* (14,330*)		
30	non-supported				(18,078)	(13,889)	(11,023)	(8,818)	(7,055)	
	4-pt. supported				20,283* (20,283*)	17,857* (17,857*)	16,094* (16,094*)	13,448 (14,330*)	11,023 (12,787*)	
25	non-supported			(23,589)	(17,637)	(13,669)	(10,803)	(8,818)	(7,055)	
	4-pt. supported			24,471* (24,471*)	20,944* (20,944*)	18,519* (18,519*)	16,094* (16,314*)	13,228 (14,551*)	11,023 (13,007*)	
20	non-supported		(31,967)	(24,471*)	(16,755)	(13,228)	(10,582)	(8,598)	(7,055)	
	4-pt. supported		33,069* (33,069*)	24,471* (22,487*)	22,267* (22,267*)	18,960* (18,960*)	15,873* (16,535*)	13,007 (14,771*)	10,803 (12,787*)	
15	non-supported	(37,479)	(29,321)	(20,944)	(15,873)	(12,566)	(10,141)	(8,378)	(6,834)	(5,732)
	4-pt. supported	52,911* (52,911*)	37,258* (37,258*)	28,660* (28,660*)	23,369* (23,369*)	18,960 (19,621*)	15,432* (16,976*)	12,787 (14,771*)	10,803 (12,787*)	9,039 (10,582*)
10	non-supported		(26,455)	(19,401)	(14,991)	(11,905)	(9,700)	(7,937)	(6,614)	(5,732)
	4-pt. supported		40,786* (40,786*)	30,203* (30,203*)	22,928 (24,251*)	18,298 (20,062*)	14,991 (17,196*)	12,346 (14,551*)	10,582 (12,566*)	9,039 (10,362*)
5	non-supported		(18,078)	(14,110)	(11,464)	(9,259)	(7,716)	(6,614)	(5,732)	
	4-pt. supported		27,999* (27,999*)	28,660* (31,085*)	22,046 (24,471*)	17,637 (20,063*)	14,551 (16,976*)	12,125 (14,330*)	10,362 (12,125*)	9,039 (9,480*)
0	non-supported		(20,723)	(16,976)	(13,448)	(10,803)	(9,039)	(7,496)	(6,393)	
	4-pt. supported		20,723* (20,723*)	27,558* (30,203*)	21,164 (24,030*)	17,196 (19,621*)	14,110 (16,535*)	11,905 (13,669*)	10,141 (11,244*)	
-5	non-supported		(20,283*)	(16,535)	(13,007)	(10,582)	(8,818)	(7,496)	(6,393)	
	4-pt. supported		20,283* (20,283*)	26,896 (27,999*)	20,723 (22,708*)	16,755 (18,519*)	13,889 (14,432*)	11,684 (12,566*)	9,921* (9,921*)	
-10	non-supported		(22,046)	(16,314)	(12,787)	(10,362)	(8,598)	(7,275)		
	4-pt. supported		22,046* (22,046*)	24,251* (24,251*)	20,062 (20,062*)	16,535* (16,535*)	13,669 (13,669*)	11,244* (11,244*)		

Height in m	Undercarriage stabilizers	4.5	6	7.5	9	10.5	12	13.5	15	16.5
15	non-supported				(8.0)	(6.1)				
	4-pt. supported				9.2* (9.2*)	6.3* (6.3*)				
13.5	non-supported				(8.3)	(6.3)	(4.9)			
	4-pt. supported				9.0* (9.0*)	8.1* (8.1*)	6.3* (6.3*)			
12	non-supported				(8.4)	(6.4)	(5.0)	(3.9)		
	4-pt. supported				8.8* (8.8*)	7.9* (7.9*)	7.3* (7.3*)	5.4* (5.4*)		
10.5	non-supported				(8.3)	(6.4)	(5.0)	(4.0)		
	4-pt. supported				8.9* (8.9*)	8.0* (8.0*)	7.2* (7.2*)	6.1* (6.5*)		
9	non-supported				(8.2)	(6.3)	(5.0)	(4.0)	(3.3)	
	4-pt. supported				9.2* (9.2*)	8.1* (8.1*)	7.3* (7.3*)	6.1 (6.5*)	5.0 (5.8*)	
7.5	non-supported			(10.7)	(8.0)	(6.2)	(4.9)	(4.0)	(3.2)	
	4-pt. supported			11.1* (11.1*)	9.5* (9.5*)	8.4* (8.4*)	7.3* (7.4*)	6.0 (6.6*)	5.0 (5.9*)	
6	non-supported		(14.5)	(10.2*)	(7.6)	(6.0)	(4.8)	(3.9)	(3.2)	
	4-pt. supported		15.0* (15.0*)	12.0* (12.0*)	10.1* (10.1*)	8.6* (8.6*)	7.2* (7.5*)	5.9 (6.7*)	4.9 (5.8*)	
4.5	non-supported	(17.0)	(13.3)	(9.5)	(7.2)	(5.7)	(4.6)	(3.8)	(3.1)	(2.6)
	4-pt. supported	24.0* (24.0*)	16.9* (16.9*)	13.0* (13.0*)	10.6* (10.6*)	8.6 (8.9*)	7.0 (7.7*)	5.8 (6.7*)	4.9 (5.8*)	4.1 (4.8*)
3	non-supported		(12.0)	(8.8)	(6.8)	(5.4)	(4.4)	(3.6)	(3.0)	(2.6)
	4-pt. supported		18.5* (18.5*)	13.7* (13.7*)	10.4 (11.0*)	8.3 (9.1*)	6.8* (7.8*)	5.6 (6.6*)	4.8 (5.7*)	4.1 (4.7*)
1.5	non-supported		(11.0)	(8.2)	(6.4)	(5.2)	(4.2)	(3.5)	(3.0)	(2.6)
	4-pt. supported		12.7* (12.7*)	13.0 (14.1*)	10.0 (11.1*)	8.0 (9.1*)	6.6 (7.7*)	5.5 (6.5*)	4.7 (5.5*)	4.0 (4.3*)
0	non-supported		(9.4)	(7.7)	(6.1)	(4.9)	(4.1)	(3.4)	(2.9)	
	4-pt. supported		9.4* (9.4*)	12.5 (13.7*)	9.6 (10.9*)	7.8 (8.9*)	6.4 (7.5*)	5.4 (6.2*)	4.6 (5.1*)	
-1.5	non-supported		(9.2*)	(7.5)	(5.9)	(4.8)	(4.0)	(3.4)	(2.9)	
	4-pt. supported		9.2* (9.2*)	12.2 (12.7*)	9.4 (10.3*)	7.6 (8.4*)	6.3 (7.0*)	5.3 (5.7*)	4.5* (4.5*)	
-3	non-supported		(10.0)	(7.4)	(5.8)	(4.7)	(3.9)	(3.3)		
	4-pt. supported		10.0* (10.0*)	11.0* (11.0*)	9.1 (9.1*)	7.5* (7.5*)	6.2 (6.2*)	5.1* (5.1*)		

Remarks

The values are stated in tons (t) or lbs. The pump pressure for this table is 5220 psi (360 bar). The values amount to 75 % of the static tipping load or 87 % of the hydraulic lifting force (marked *), in accordance with ISO 10567. When the machine is standing on solid and level ground, these values apply to slewing operations through 360°. The values in brackets apply in the lengthwise direction of the undercarriage. The values specified "non-

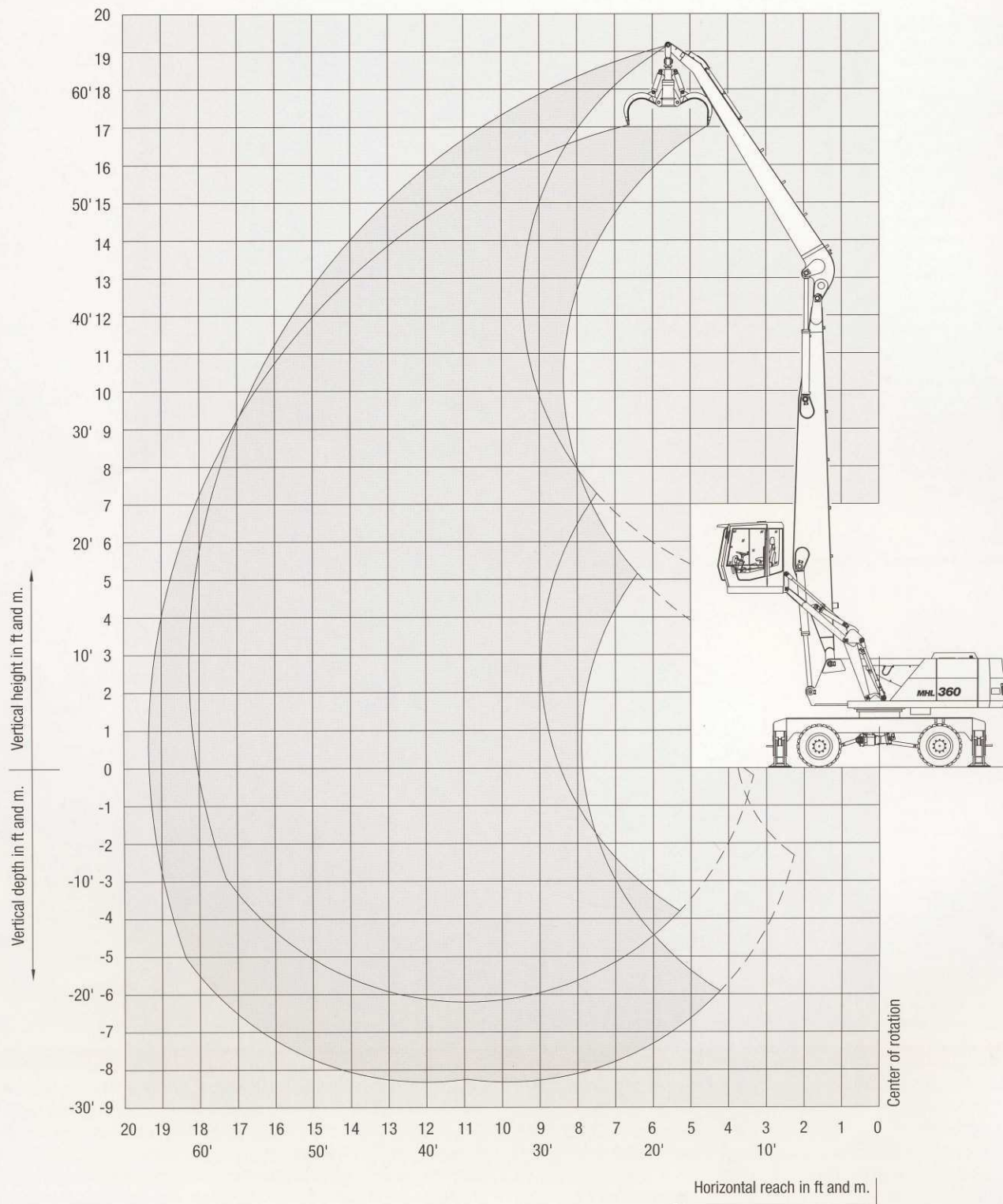
supported" only apply when the load is hoisted above the front or rear axle. The weight of the attached load hoisting implement (grab, magnet, load hook) must be deducted from the carrying capacity values. If the TEREX Fuchs quick-attach system is mounted on the boom, carrying capacity values are reduced by 1,332 lbs (600 kg). In accordance with EC guidelines, hose-rupture safety valves on the lift cylinders and an overload warning device are required for crane operations.



Working Diagram

MHL 360 reach 59' (18.0 m)

► Work equipment: box-type boom straight 31' (9.7 m), dipperstick 25' (7.8 m).



Lifting Capacity

MHL 360 reach 59' (18.0 m)

▶ Work equipment: box-type boom straight 31' (9.7 m), dipperstick 22' (7.8) .

Height in ft.	Undercarriage stabilizers	Reach in ft.									
		15	20	25	30	35	40	45	50	55	60
50	non-supported					(14,330)	(11,023)				
	4-pt. supported					16,755* (16,755*)	14,991* (14,991*)				
45	non-supported					(14,551)	(11,244)	(8,818)			
	4-pt. supported					16,535* (16,535*)	14,771* (14,771*)	13,448* (13,448*)			
40	non-supported					(14,551)	(11,464)	(9,039)	(7,055)		
	4-pt. supported					16,535* (16,535*)	14,771* (14,771*)	13,228* (13,228*)	11,023 (11,905*)		
35	non-supported					(14,551)	(11,244)	(9,039)	(7,055)		
	4-pt. supported					16,535* (16,535*)	14,771* (14,771*)	13,228* (13,228*)	11,023 (11,905*)		
30	non-supported				(18,298)	(14,110)	(11,023)	(8,818)	(7,055)	(5,732)	
	4-pt. supported				19,180* (19,180*)	16,976* (16,976*)	14,991* (14,991*)	13,448* (13,448*)	11,023 (11,905*)	9,039 (10,582*)	
25	non-supported				(17,637*)	(13,669)	(10,803)	(8,598)	(6,834)	(5,732)	
	4-pt. supported				20,062* (20,062*)	17,417* (17,417*)	15,212* (15,212*)	13,228 (13,448*)	10,803 (12,125*)	9,039 (10,582*)	
20	non-supported			(22,487)	(16,755)	(13,007)	(10,362)	(8,378)	(6,834)	(5,512)	
	4-pt. supported			25,574* (25,574*)	21,164* (21,164*)	18,078* (18,078*)	15,653* (15,653*)	12,787* (13,669*)	10,582 (12,125*)	8,818 (10,582*)	
15	non-supported	(37,479)	(29,101)	(20,503)	(15,432)	(12,125)	(9,700)	(7,937)	(6,393)	(5,291)	
	4-pt. supported	48,502* (48,502*)	36,156* (36,156*)	27,558* (27,558*)	22,046* (22,046*)	18,739* (18,739*)	14,991 (15,873*)	12,346 (13,889*)	10,362 (12,125*)	8,818 (10,582*)	
10	non-supported		(25,353)	(18,519)	(14,330)	(11,464)	(9,259)	(7,496)	(6,173)	(5,071)	(4,409)
	4-pt. supported		38,801* (38,801*)	28,881* (28,881*)	22,267 (22,928*)	17,637 (18,960*)	14,330 (16,094*)	11,905 (13,889*)	10,141 (11,905*)	8,598 (10,141*)	7,496 (8,378*)
5	non-supported		(20,944*)	(16,755)	(13,228)	(10,582)	(8,598)	(7,055)	(5,952)	(5,071)	
	4-pt. supported		20,944* (20,944*)	27,558 (29,321*)	21,164 (23,369*)	16,976 (18,960*)	13,889 (15,873*)	11,684 (13,669*)	9,921 (11,684*)	8,378 (9,700*)	
0	non-supported		(15,653*)	(15,432)	(12,346)	(9,921)	(8,157)	(6,834)	(5,732)	(4,850)	
	4-pt. supported		15,653* (15,653*)	26,015 (28,440*)	20,062 (22,708*)	16,314 (18,519*)	13,448 (15,432*)	11,244 (13,448*)	9,700 (11,028*)	8,157 (9,039*)	
-5	non-supported		(15,653*)	(14,771)	(11,684)	(9,480)	(7,937)	(6,614)	(5,512)	(4,850)	
	4-pt. supported		15,653* (15,653*)	25,133 (26,455*)	19,401 (21,385*)	15,653 (17,637*)	13,007 (14,771*)	11,023 (12,346*)	9,480 (10,141*)	7,937 (7,937*)	
-10	non-supported		(17,196*)	(14,551)	(11,464)	(9,259)	(7,496)	(6,393)	(5,512)		
	4-pt. supported		17,196* (17,196*)	23,149* (23,149*)	19,180 (19,180*)	15,432 (15,873*)	12,787 (13,448*)	10,803 (11,023*)	8,818* (8,818*)		

Height in m	Undercarriage stabilizers	Reach in m									
		4.5	6	7.5	9	10.5	12	13.5	15	16.5	18
15	non-supported					(6.5)	(5.0)				
	4-pt. supported					7.6* (7.6*)	6.8* (6.8*)				
13.5	non-supported					(6.6)	(5.1)	(4.0)			
	4-pt. supported					7.5* (7.5*)	6.7* (6.7*)	6.1* (6.1*)			
12	non-supported					(6.6)	(5.2)	(4.1)	(3.2)		
	4-pt. supported					7.5* (7.5*)	6.7* (6.7*)	6.0* (6.0*)	5.0 (5.4*)		
10.5	non-supported					(6.6)	(5.1)	(4.1)	(3.2)		
	4-pt. supported					7.5* (7.5*)	6.7* (6.7*)	6.0* (6.0*)	5.0 (5.4*)		
9	non-supported				(8.3)	(6.4)	(5.0)	(4.0)	(3.2)	(2.6)	
	4-pt. supported				8.7* (8.7*)	7.7* (7.7*)	6.8* (6.8*)	6.1* (6.1*)	5.0 (5.4*)	4.1 (4.8*)	
7.5	non-supported				(8.0*)	(6.2)	(4.9)	(3.9)	(3.1)	(2.6)	
	4-pt. supported				9.1* (9.1*)	7.9* (7.9*)	6.9* (6.9*)	6.0 (6.1*)	4.9 (5.5*)	4.1 (4.8*)	
6	non-supported			(10.2)	(7.6)	(5.9)	(4.7)	(3.8)	(3.1)	(2.5)	
	4-pt. supported			11.6* (11.6*)	9.6* (9.6*)	8.2* (8.2*)	7.1* (7.1*)	5.8* (6.2*)	4.8 (5.5*)	4.0 (4.8*)	
4.5	non-supported	(17.0)	(13.2)	(9.3)	(7.0)	(5.5)	(4.4)	(3.6)	(2.9)	(2.4)	
	4-pt. supported	22.0* (22.0*)	16.4* (16.4*)	12.5* (12.5*)	10.0* (10.0*)	8.5* (8.5*)	6.8 (7.2*)	5.6 (6.3*)	4.7 (5.5*)	4.0 (4.8*)	
3	non-supported		(11.5)	(8.4)	(6.5)	(5.2)	(4.2)	(3.4)	(2.8)	(2.3)	(2.0)
	4-pt. supported		17.6* (17.6*)	13.1* (13.1*)	10.1 (10.4*)	8.0 (8.6*)	6.5 (7.3*)	5.4 (6.3*)	4.6 (5.4*)	3.9 (4.6*)	3.4 (3.8*)
1.5	non-supported		(9.5*)	(7.6)	(6.0)	(4.8)	(3.9)	(3.2)	(2.7)	(2.3)	
	4-pt. supported		9.5* (9.5*)	12.5 (13.3*)	9.6 (10.6*)	7.7 (8.6*)	6.3 (7.2*)	5.3 (6.2*)	4.5 (5.3*)	3.8 (4.4*)	
0	non-supported		(7.1*)	(7.0)	(5.6)	(4.5)	(3.7)	(3.1)	(2.6)	(2.2)	
	4-pt. supported		7.1* (7.1*)	11.8 (12.9*)	9.1 (10.3*)	7.4 (8.4*)	6.1 (7.0*)	5.1 (6.1*)	4.4 (5.0*)	3.7 (4.1*)	
-1.5	non-supported		(7.1*)	(6.7)	(5.3)	(4.3)	(3.6)	(3.0)	(2.5)	(2.2)	
	4-pt. supported		7.1* (7.1*)	11.4 (12.0*)	8.8 (9.7*)	7.1 (8.0*)	5.9 (6.7*)	5.0 (5.6*)	4.3 (4.6*)	3.6 (3.6*)	
-3	non-supported		(7.8*)	(6.6)	(5.2)	(4.2)	(3.4)	(2.9)	(2.5)		
	4-pt. supported		7.8* (7.8*)	10.5* (10.5*)	8.7 (8.7*)	7.0 (7.2*)	5.8 (6.1*)	4.9 (5.0*)	4.0* (4.0*)		

Remarks

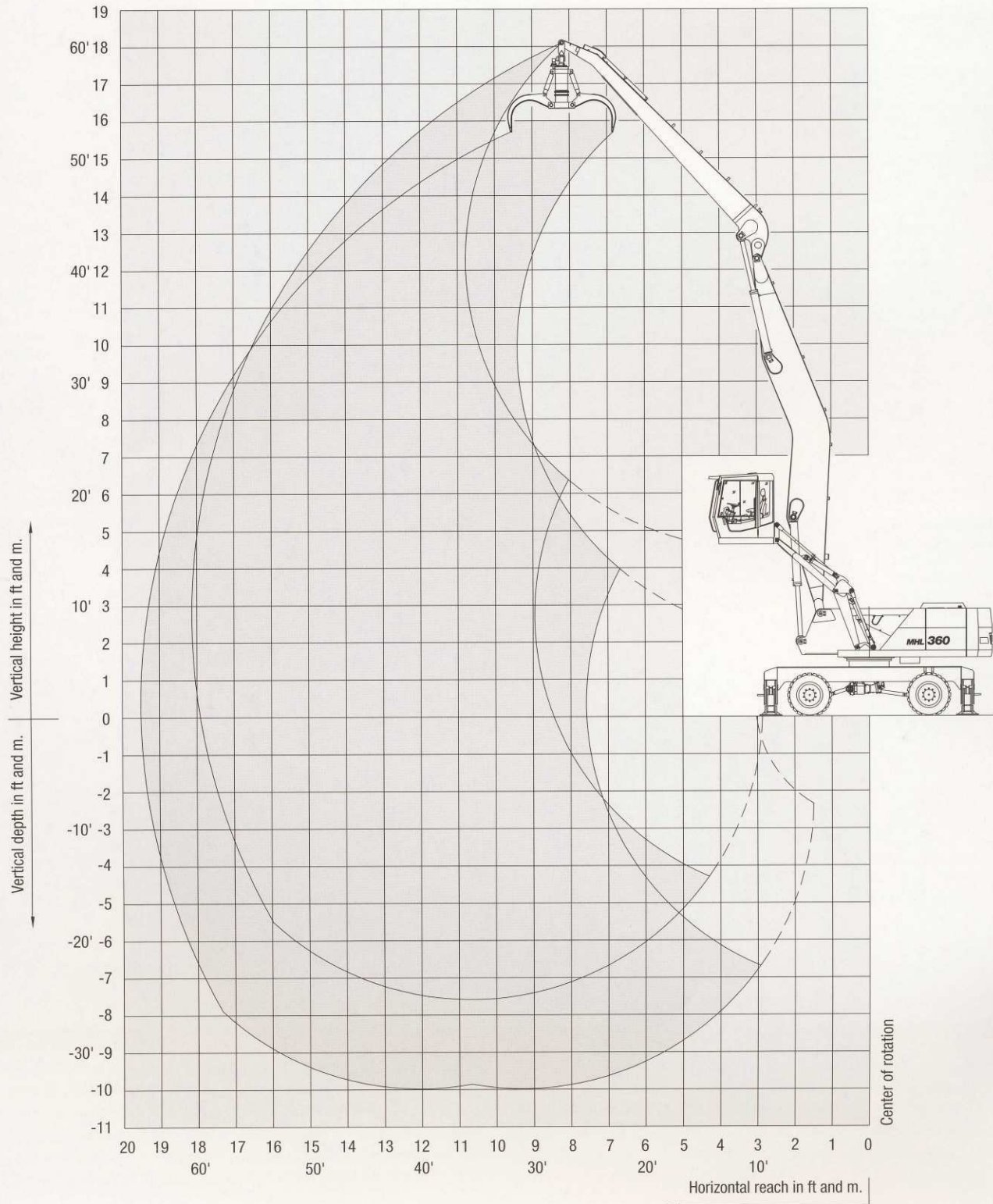
The values are stated in tons (t) or lbs. The pump pressure for this table is 5220 psi (360 bar). The values amount to 75 % of the static tipping load or 87 % of the hydraulic lifting force (marked *), in accordance with ISO 10567. When the machine is standing on solid and level ground, these values apply to slewing operations through 360°. The values in brackets apply in the lengthwise direction of the undercarriage. The values specified "non-

supported" only apply when the load is hoisted above the front or rear axle. The weight of the attached load hoisting implement (grab, magnet, load hook) must be deducted from the carrying capacity values. If the TEREX Fuchs quick-attach system is mounted on the boom, carrying capacity values are reduced by 1,332 lbs (600 kg). In accordance with EC guidelines, hose-rupture safety valves on the lift cylinders and an overload warning device are required for crane operations.

Working Diagramm

MHL 360 reach 59' (18.0 m)

► Work equipment: box-type boom monobloc 31' (9.7 m), dipperstick 25' (7.8 m) .



Lifting Capacity

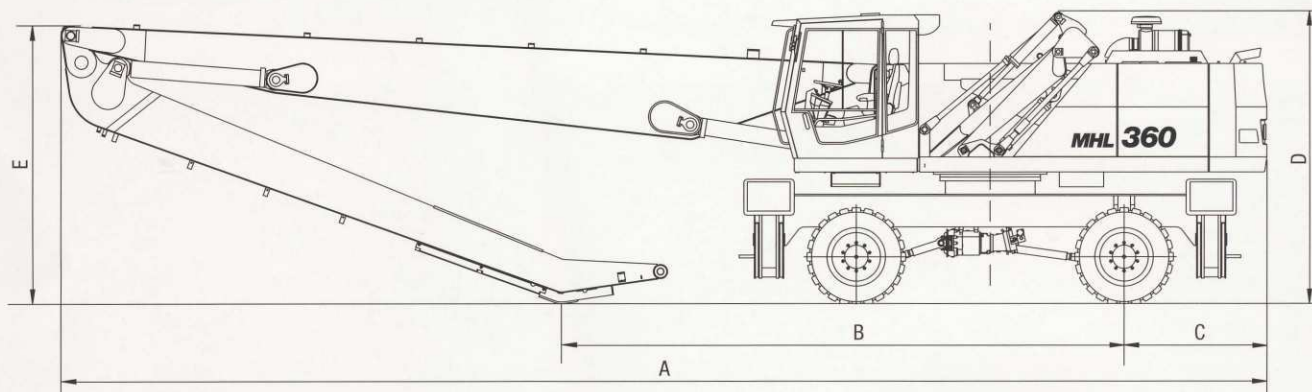
MHL 360 reach 59' (18.0 m)

► Work equipment: box-type boom monobloc 31' (9.7 m), dipperstick 25' (7.8 m).

Height in ft.	Undercarriage stabilizers	Reach in ft.									
		15	20	25	30	35	40	45	50	55	60
50	non-supported						(11,023)				
	4-pt. supported						13,007* (13,007*)				
45	non-supported						(11,244)	(8,818)			
	4-pt. supported						12,566* (12,566*)	11,684* (11,684*)			
40	non-supported						(11,464)	(9,039)	(7,055)		
	4-pt. supported						12,346* (12,346*)	11,684* (11,684*)	10,803* (10,803*)		
35	non-supported						(11,244*)	(9,039)	(7,055)		
	4-pt. supported						12,566* (12,566*)	11,684* (11,684*)	10,803* (10,803*)		
30	non-supported					(14,330*)	(11,023)	(8,818)	(7,055)	(5,732)	
	4-pt. supported					14,330* (14,330*)	12,787* (12,787*)	11,905* (11,905*)	10,803 (10,803*)	9,039 (9,921*)	
25	non-supported					(13,669)	(10,603)	(8,598)	(7,055)	(5,512)	
	4-pt. supported					14,771* (14,771*)	13,228* (13,228*)	11,905* (11,905*)	10,803 (11,023*)	9,039 (9,921*)	
20	non-supported				(16,755)	(13,007)	(10,362)	(8,378)	(6,834)	(5,512)	
	4-pt. supported				17,857* (17,857*)	15,653* (15,653*)	13,889* (13,889*)	12,346* (12,346*)	10,582 (11,023*)	8,618 (10,141*)	
15	non-supported	(37,479)	(29,101)	(20,723)	(15,653)	(12,346)	(9,700)	(7,937)	(6,393)	(5,291)	
	4-pt. supported	44,092* (44,092*)	30,865* (30,865*)	23,810* (23,810*)	19,401* (19,401*)	16,535* (16,535*)	14,330* (14,330*)	12,346 (12,787*)	10,362 (11,244*)	8,598 (10,582*)	
10	non-supported		(25,353)	(18,739)	(14,330)	(11,244)	(9,259)	(7,496)	(6,173)	(5,071)	(4,409)
	4-pt. supported		35,053* (35,053*)	26,235* (26,235*)	20,944* (20,944*)	17,417* (17,417*)	14,551 (14,771*)	11,905 (13,007*)	10,141 (11,464*)	8,598 (10,141*)	7,496 (8,378*)
5	non-supported		(22,487)	(16,976)	(13,228)	(10,582)	(8,598)	(7,005)	(5,952)	(5,071)	
	4-pt. supported		24,251* (24,251*)	27,558* (27,558*)	21,164 (21,605*)	16,976 (18,078*)	13,889 (15,212*)	11,684 (13,228*)	9,921 (11,464*)	8,378 (10,141*)	
0	non-supported		(17,857*)	(15,653)	(12,346)	(9,921)	(8,157)	(6,834)	(5,732)	(4,850)	
	4-pt. supported		17,857* (17,857*)	26,015 (27,999*)	20,062 (22,267*)	16,314 (18,078*)	13,448 (15,432*)	11,244 (13,228*)	9,700 (11,464*)	8,378 (9,700*)	
-5	non-supported		(17,196*)	(14,771)	(11,684)	(9,480)	(7,716)	(6,614)	(5,512)	(4,850)	
	4-pt. supported		17,196* (17,196*)	25,133 (27,337*)	19,401 (21,826*)	15,653 (18,078*)	13,007 (15,212*)	11,023 (13,007*)	9,480 (11,023*)	8,157 (9,259*)	
-10	non-supported		(18,298*)	(14,330)	(11,244)	(9,039)	(7,496)	(6,393)	(5,512)	(4,630)	
	4-pt. supported		18,298* (18,298*)	24,692 (25,794*)	19,180 (20,944*)	15,432 (17,196*)	12,787 (14,551*)	10,803 (12,346*)	9,259 (10,141*)	8,157 (8,378*)	
-15	non-supported		(19,612*)	(14,330)	(11,023)	(9,039)	(7,496)	(6,393)	(5,512)		
	4-pt. supported		19,621* (19,621*)	23,149* (23,149*)	18,960* (19,180*)	15,212 (16,094*)	12,566 (13,448*)	10,803 (11,244*)	9,039* (9,039*)		
-20	non-supported		(20,062*)	(14,551)	(11,244)	(9,039)	(7,496)	(6,393)	(5,512)		
	4-pt. supported		21,385* (21,385*)	19,842* (19,842*)	16,755* (16,755*)	14,110* (14,110*)	11,684* (11,684*)	9,480* (9,480*)	7,055* (7,055*)		

Height in m	Undercarriage stabilizers	Reach in m									
		4.5	6	7.5	9	10.5	12	13.5	15	16.5	18
15	non-supported						(5.0)				
	4-pt. supported						5.9* (5.9*)				
13.5	non-supported						(5.1)	(4.0)			
	4-pt. supported						5.7* (5.7*)	5.3* (5.3*)			
12	non-supported						(5.2)	(4.1)	(3.2)		
	4-pt. supported						5.6* (5.6*)	5.3* (5.3*)	4.8* (4.8*)		
10.5	non-supported						(5.1)	(4.1)	(3.2)		
	4-pt. supported						5.7* (5.7*)	5.3* (5.3*)	4.9* (4.9*)		
9	non-supported					(6.5*)	(5.0)	(4.0)	(3.2)	(2.6)	
	4-pt. supported					6.5* (6.5*)	5.8* (5.8*)	5.4* (5.4*)	4.9 (4.9*)	4.1 (4.5*)	
7.5	non-supported					(6.2)	(4.9)	(3.9)	(3.2)	(2.5)	
	4-pt. supported					6.7* (6.7*)	6.0* (6.0*)	5.4* (5.4*)	4.9 (5.0*)	4.1 (4.5*)	
6	non-supported				(7.6)	(5.9)	(4.7)	(3.8)	(3.1)	(2.5)	
	4-pt. supported				8.1* (8.1*)	7.1* (7.1*)	6.3* (6.3*)	5.6* (5.6*)	4.8 (5.0*)	4.0 (4.6*)	
4.5	non-supported	(17.0)	(13.2)	(9.4)	(7.1)	(5.6)	(4.4)	(3.6)	(2.9)	(2.4)	
	4-pt. supported	20.0* (20.0*)	14.0* (14.0*)	10.8* (10.8*)	8.8* (8.8*)	7.5* (7.5*)	6.5* (6.5*)	5.6 (5.8*)	4.7 (5.1*)	4.0 (4.6*)	
3	non-supported		(11.5)	(8.5)	(6.5)	(5.1)	(4.2)	(3.4)	(2.8)	(2.3)	(2.0)
	4-pt. supported		15.9* (15.9*)	11.9* (11.9*)	9.5* (9.5*)	7.9* (7.9*)	6.6 (6.7*)	5.4 (5.9*)	4.6 (5.2*)	3.9 (4.6*)	3.4 (3.8*)
1.5	non-supported		(10.2)	(7.7)	(6.0)	(4.8)	(3.9)	(3.2)	(2.7)	(2.3)	
	4-pt. supported		11.0* (11.0*)	12.5* (12.5*)	9.6 (9.8*)	7.7 (8.2*)	6.3 (6.9*)	5.3 (6.0*)	4.5 (5.2*)	3.8 (4.6*)	
0	non-supported		(8.1*)	(7.1)	(5.6)	(4.5)	(3.7)	(3.1)	(2.6)	(2.2)	
	4-pt. supported		8.1* (8.1*)	11.8 (12.7*)	9.1 (10.1*)	7.4 (8.2*)	6.1 (7.0*)	5.1 (6.0*)	4.4 (5.2*)	3.8 (4.4*)	
-1.5	non-supported		(7.8*)	(6.7)	(5.3)	(4.3)	(3.5)	(3.0)	(2.5)	(2.2)	
	4-pt. supported		7.8* (7.8*)	11.4 (12.4*)	8.8 (9.9*)	7.1 (8.2*)	5.9 (6.9*)	5.0 (5.9*)	4.3 (5.0*)	3.7 (4.2*)	
-3	non-supported		(8.3*)	(6.5)	(5.1)	(4.1)	(3.4)	(2.9)	(2.5)	(2.1)	
	4-pt. supported		8.3* (8.3*)	11.2 (10.7*)	8.7 (9.5*)	7.0 (7.8*)	5.7 (6.1*)	4.9 (5.6*)	4.2* (4.6*)	3.7 (3.8*)	
-4.5	non-supported		(8.9*)	(6.5)	(5.0)	(4.1)	(3.4)	(2.9)	(2.5)		
	4-pt. supported		8.9* (8.9*)	10.5* (10.5*)	8.6 (8.7*)	6.9 (7.3*)	5.7 (6.1*)	4.9 (5.1*)	4.1 (4.1*)		
-6	non-supported		(9.1*)	(6.6)	(5.1)	(4.1)	(3.4)	(2.9)	(2.5)		
	4-pt. supported		9.7* (9.7*)	9.0* (9.0*)	7.6 (7.6*)	6.4* (6.4*)	5.3 (5.3*)	4.3* (4.3*)	3.2* (3.2*)		

► For additional remarks see notes on page 5.

MHL 360**Transport dimensions on flat-bed trailer****Transport Dimensions**

Dimensions	Reach (work equipment)		
	54' (16.5 m) straight	59' (18.0 m) straight	59' (18.0 m) monobloc
A	541" (13,720 mm)	571" (14,510 mm)	567" (14,415 mm)
B	252" (6,405 mm)	253" (6,440 mm)	234" (5,945 mm)
C	67" (1,710 mm)	67" (1,710 mm)	67" (1,710 mm)
D	137" (3,490 mm)	137" (3,490 mm)	137" (3,490 mm)
E	132" (3,350 mm)	143" (3,630 mm)	145" (3,675 mm)

Grabs

- ▶ 1.04 yd³ (0.8 m³) - 1.3 yd³ (1.0 m³) cactus grab (optional) with cast central case and enclosed swing drive, grab jaws with wear-resistant grab liners and tips.
- ▶ Clamshell bucket (optional) according to job-site conditions.

Safety Equipments

- ▶ Required when machine is used for load hook operations in compliance with EN 474-5. Protection of cab ensured by work equipment operating range limit.

Cab

- ▶ **Cab:** ergonomically shaped driver's cab with functional design and excellent all-round visibility, infinitely variable hydraulically height-adjustable with max. eye level of 20' (6.1 m)
- ▶ **Driver's seat:** air-cushioned comfort seat with pneumatically adjustable lumbar support, safety belt and integrated headrest, seat heating available on request. Seat position, seat inclination and seat cushion multi-adjustable in line with position of armrests and pilot control units, allowing fatigue-free operations.
- ▶ **Steering post:** inclinable and height adjustable.
- ▶ Infinitely variable hotwater heating with 3-speed fan, 4 adjustable defroster nozzles.
- ▶ Air conditioning as standard.
- ▶ Up and over type front windshield with pull-down sunblind, lift-up skylight on cab roof.
- ▶ **Option:** cab with bullet-proofed glass, windshield screen, auxiliary heating, stereo cassette radio.
- ▶ Acoustic power level (guaranteed) $L_{WA} = 104 \text{ dB(A)}$.

Official Homologation

- ▶ Certification according to CE-regulations.

**TEREX Fuchs**

8800 Rostin Road
Southaven, MS 38671
USA

TOLL FREE: 1-888-201-6008
PHONE: 662-393-1800
FAX: 662-393-1700
WEB www.terex.com
EMAIL fuchs@fuchssusa.com