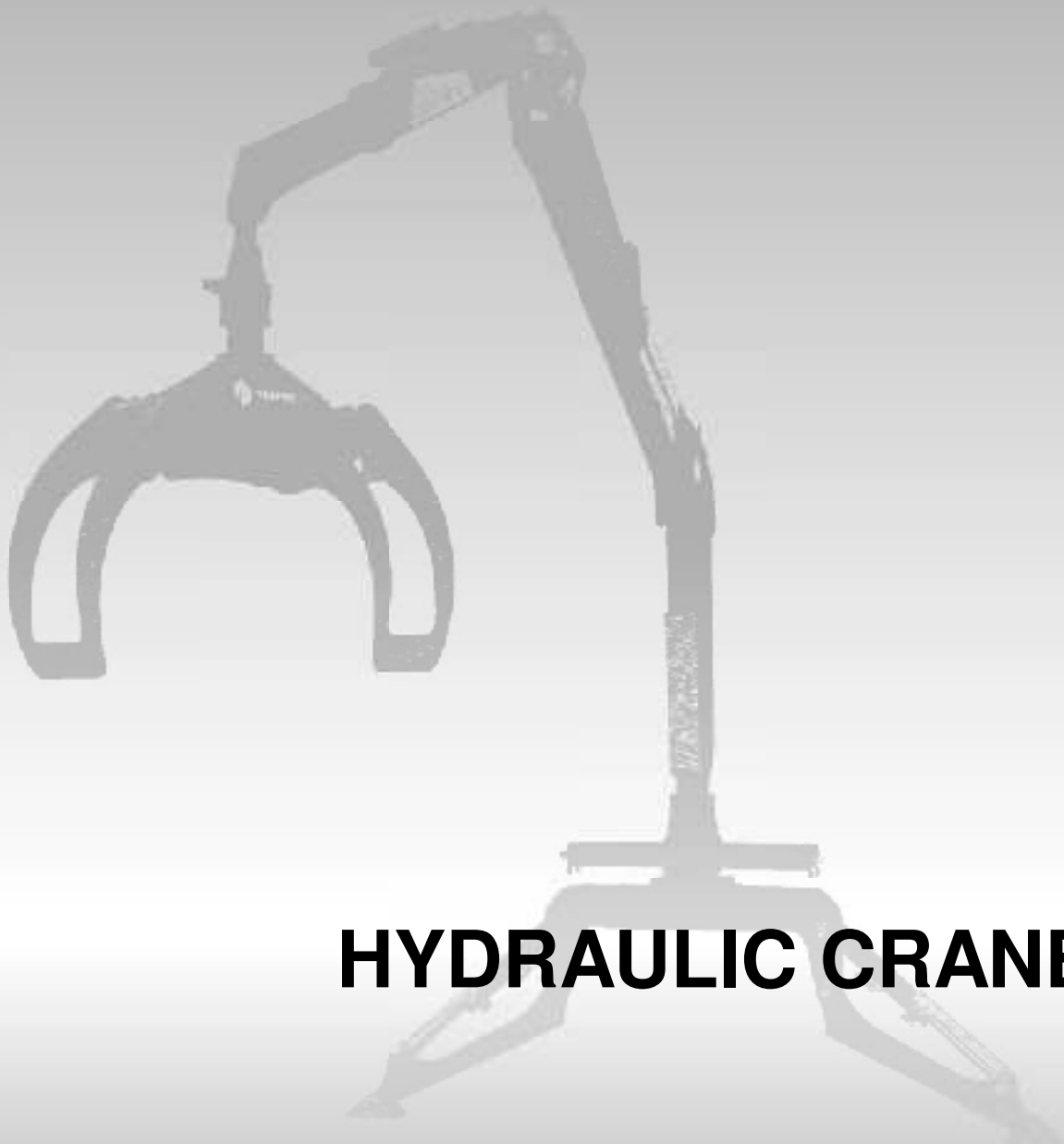




**TAJFUNLIV®**



# HYDRAULIC CRANES



## **Tajfun Liv d.o.o.**

We are a specialized European company in manufacturing hydraulic loader cranes. With in-house development and production we have become an important manufacturer of equipment for handling timber and waste material. Forty years of experience in development, production and sales of cranes is our advantage and guarantee for reliable and quality products, made of material from renowned European producers.

A wide range of cranes with capacity from 60 to 261 kNm and outreach of up to 14.5 m provides the users with the optimal choice regarding the type and requirements of the job. Significantly facilitated and simplified work, flexibility in performing various tasks and great extent of efficiency and durability of the entire equipment are only some of the benefits brought to you by investing in LIV cranes.

Skilled and trained employees in development, technology and production are the warranty for the high quality of our products, which render the efficient and safe work in any environment possible. Our strategy is to manufacture and market reliable, user- and environment-friendly cranes with top technical characteristics.



## Development and production

Stress and structure kinematics analyses, based on 3D models, are performed by using the Finite Element Method (FEM). After the majority of critical points are eliminated in the design stage, the durability testing of the prototype is used to eliminate the weaknesses that the computer simulation was unable to detect. The result is a product able to withstand even the heaviest loads in all working environments.

High product quality is ensured by compliance of cranes and accessories with European standards. All structural parts are made of fine-grain micro-alloyed steel of highest quality. Most hydraulic cylinder jackets are precision-rolled, thus featuring an excellent glide surface, smoother and stiffer, compared to usual honing. The lower part of the column is made of thermally treated alloy-steel casting, ensuring high level of strength and stability. The entire slewing system is submerged in oil bath, ensuring operational longevity. The boom system is designed to provide solid lifting characteristics in the entire lifting area.

Constant upgrading of products and development of new crane types is performed according to the Machine Safety Directive 06/42/EEC. Products are classified as HC1S4 according to the EN 12999 standard - Loader Cranes. Quality of products and processes and protection of the environment are managed according to the ISO 9001 and ISO 14001 standards.



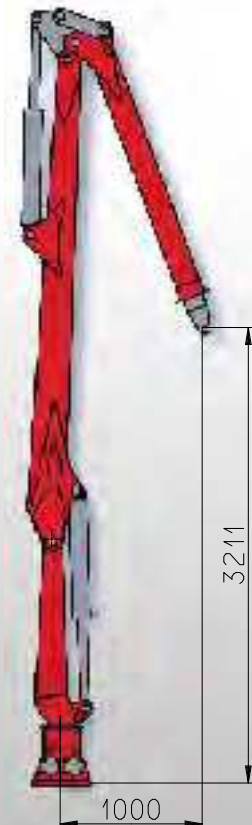
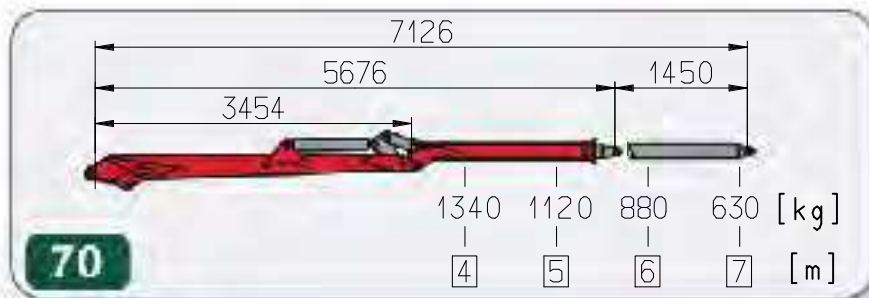
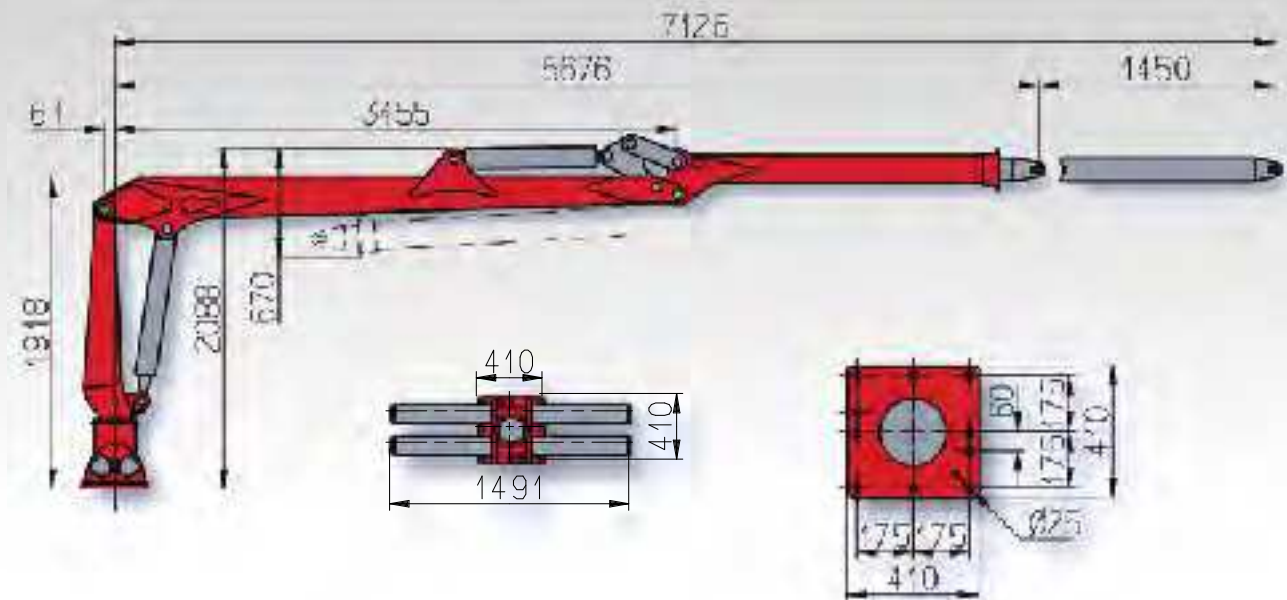


### The “T” family

The “T” family cranes are mainly intended for installation on tractors, forwarders and trailers. They are especially suitable for work in areas with difficult access, being a strong and reliable tool in all off-road timber handling. Our production range includes cranes with capacity from 50 to 120 kNm, with various shapes and lengths of boom mechanism and in versions with high or short columns. Operation of the crane may be classical on top seat on the column or proportional electro-hydraulic from the tractor’s cabin.



## LIV 50T

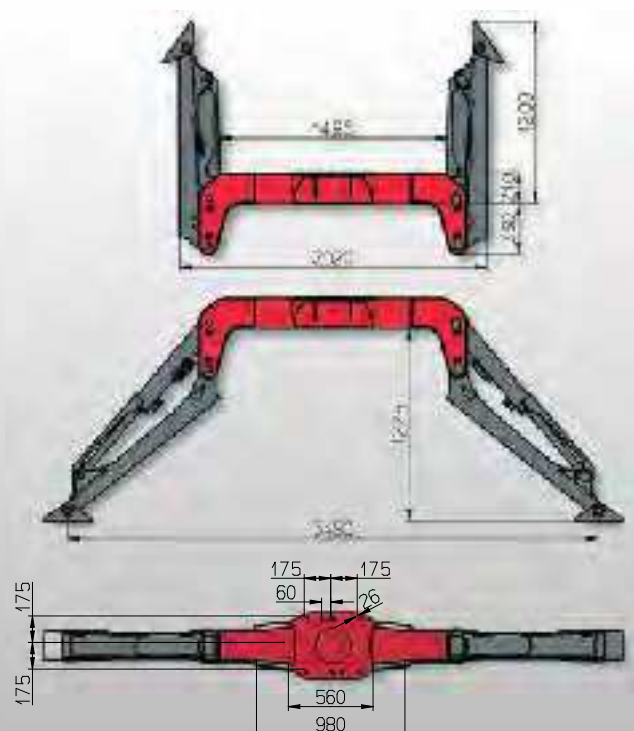


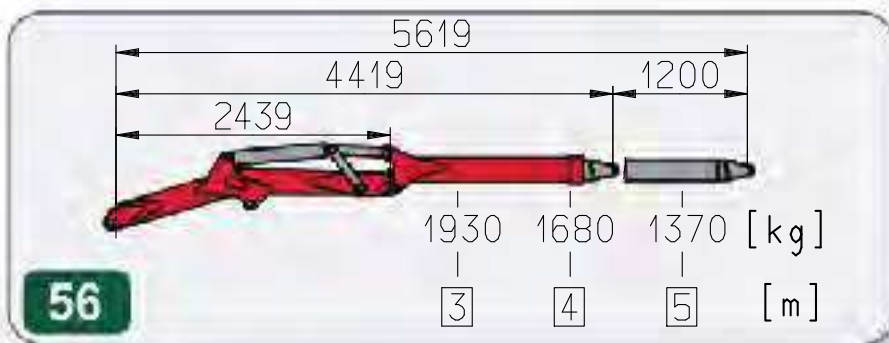
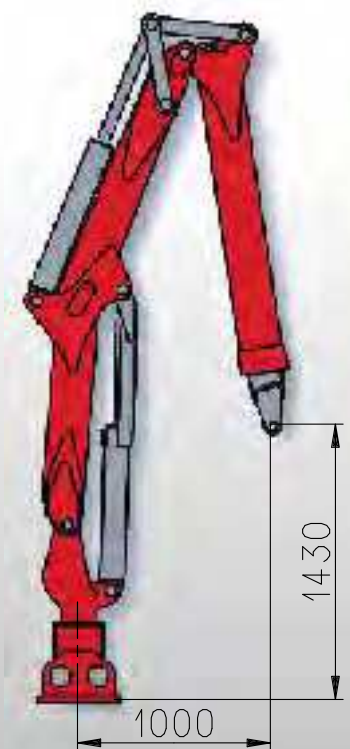
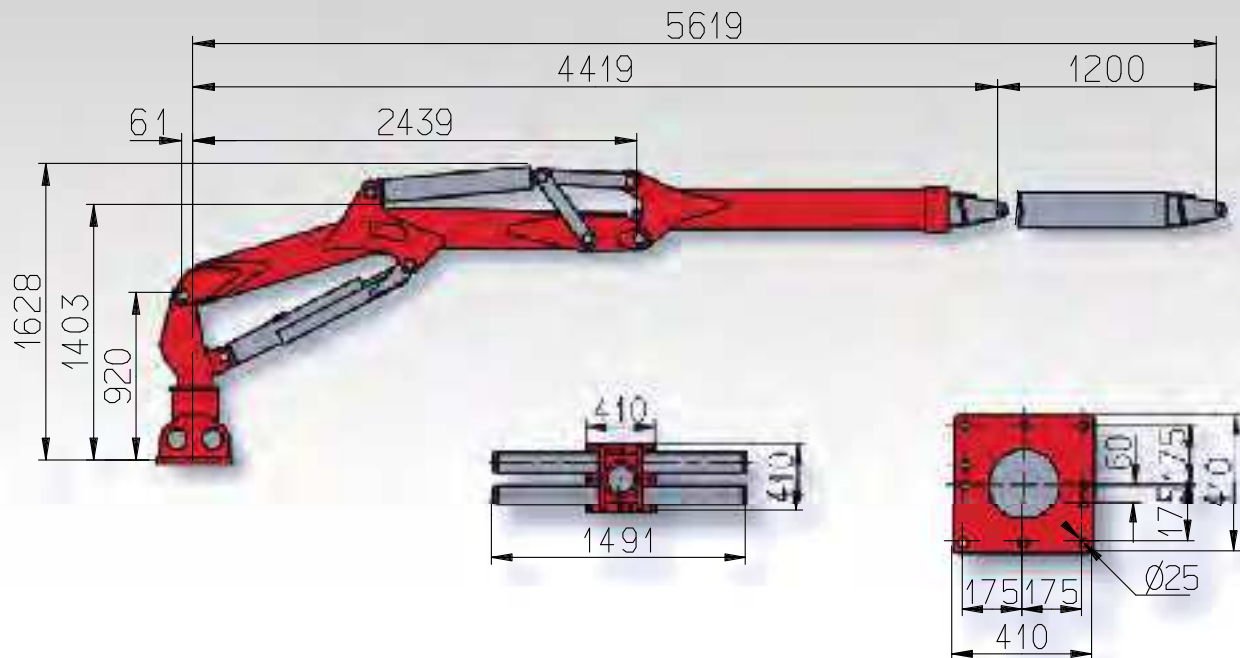
LIV 50T.70		
Tm	kNm	55
	o	370
Q	l/min	40-60
	MPa	21
	mm	7126
	kNm	22
	mm	1450
	kg	980





## LIV 60T



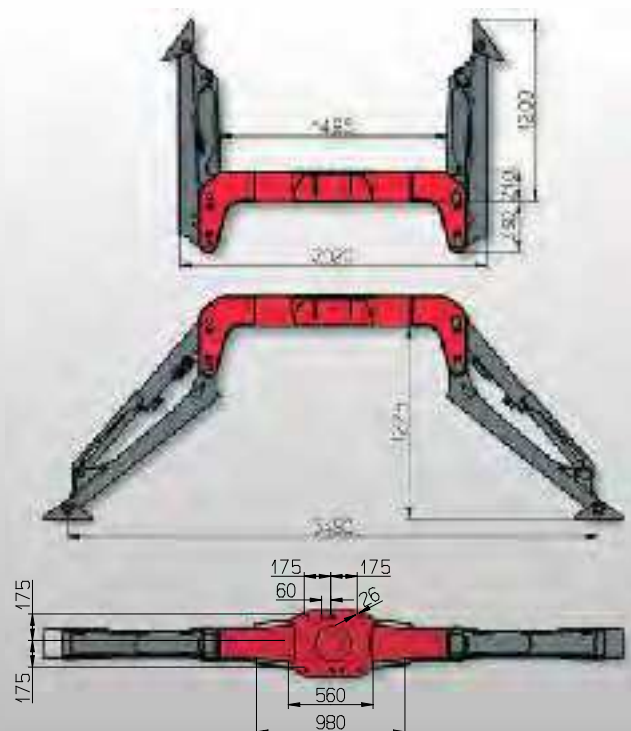
**LIV 60T****LIV 60T.56**

<b>Tm</b>	kNm	<b>66</b>
	o	<b>370</b>
<b>Q</b>	l/min	<b>40-60</b>
	MPa	<b>21</b>
	mm	<b>5619</b>
	kNm	<b>22</b>
	mm	<b>1200</b>
	kg	<b>740</b>





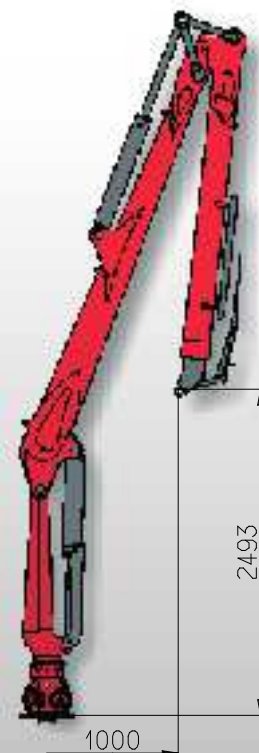
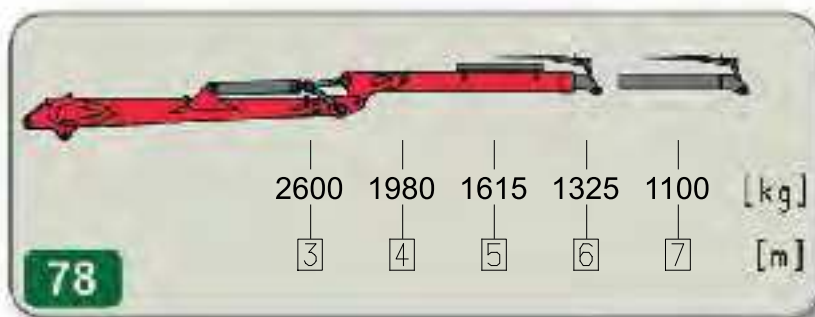
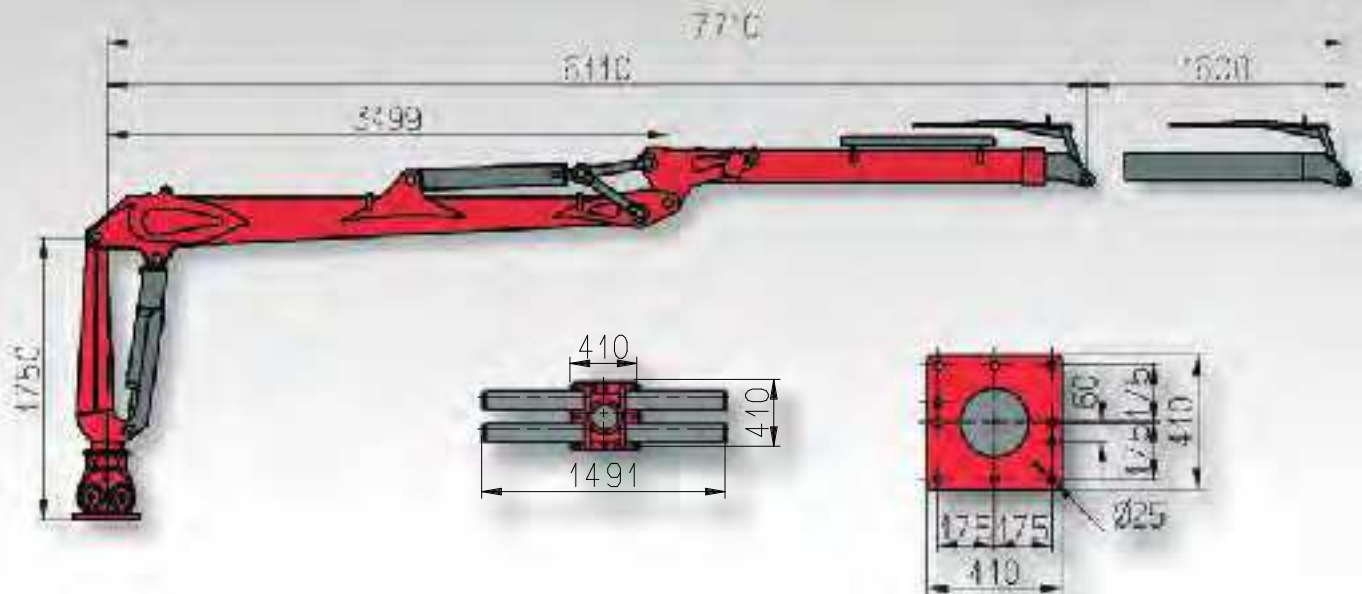
## LIV 80T







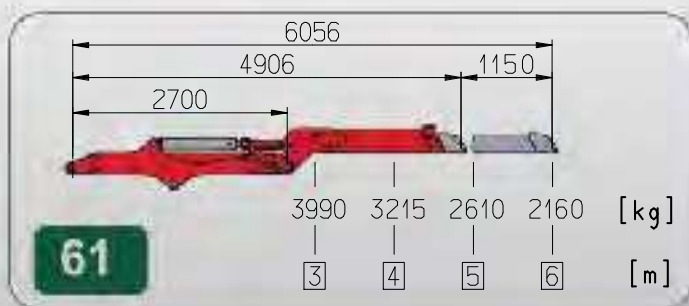
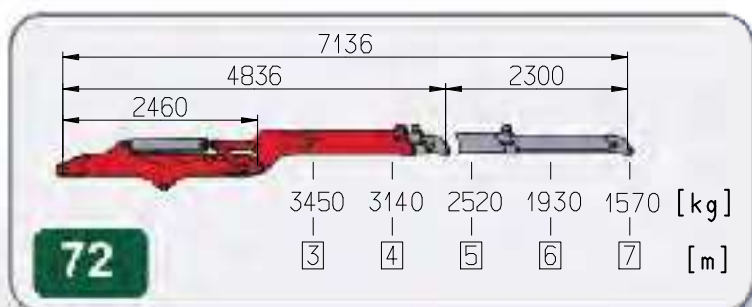
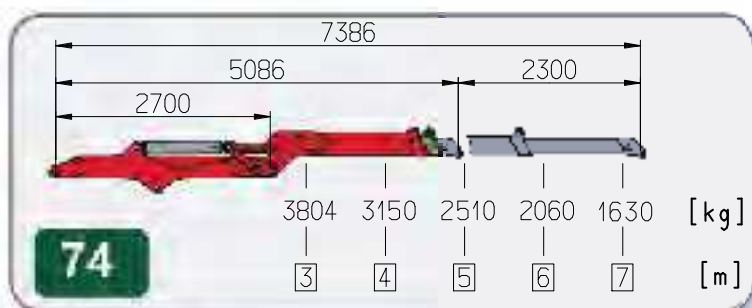
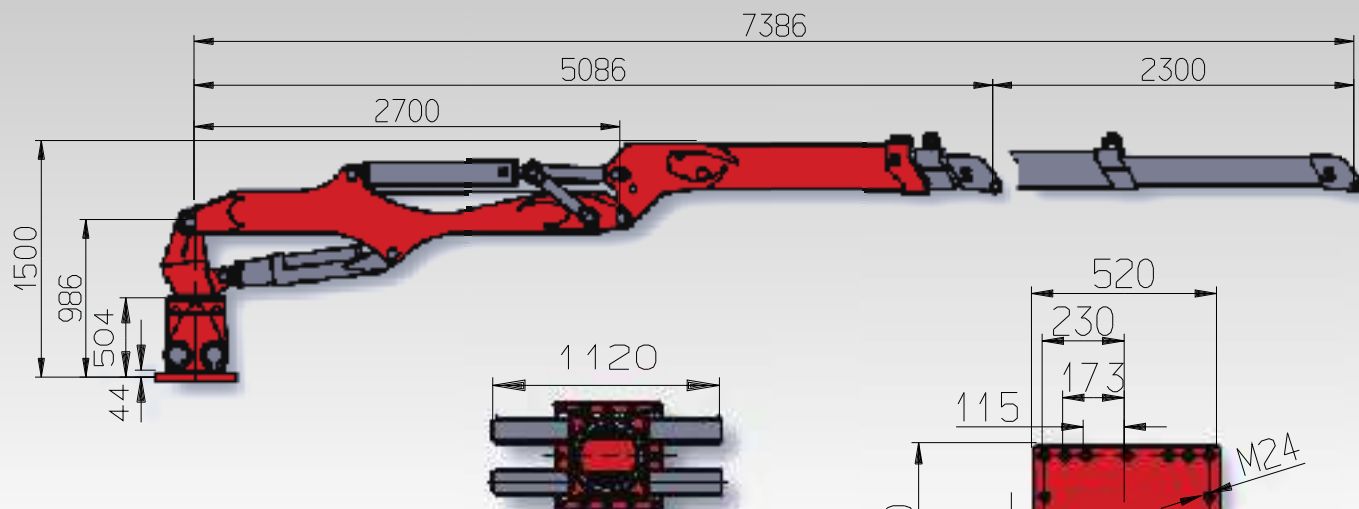
## LIV 80T



LIV 80T.78		
Tm	kNm	81
	o	370
Q	l/min	40-60
	MPa	21
	mm	7710
	kNm	22
	mm	1600
	kg	1250



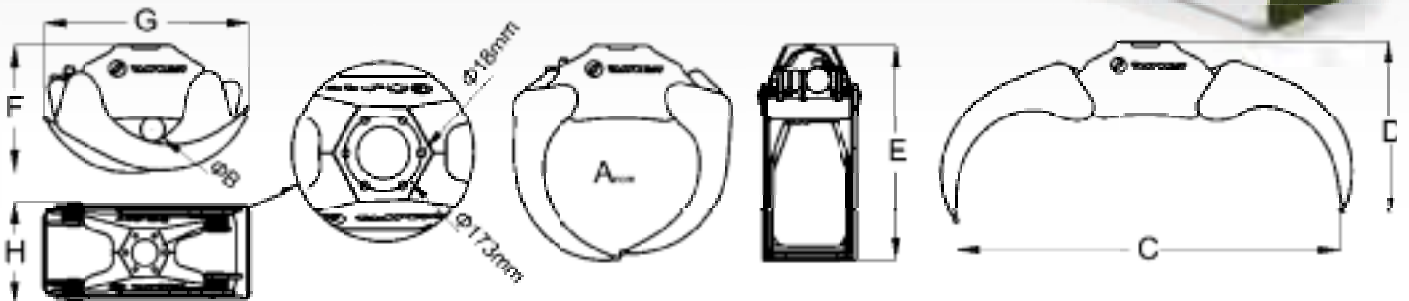
## LIV 120T



	X	Y
.61	1000	1775
.72	1000	1325
.74	1000	1575

		LIV 120T.61	LIV 120T.72	LIV 120T.74
Tm	kNm	<30	127	126
	o	210	210	210
Q	l/min	60-80	60-80	60-80
	MPa	23	23	23
t <sub>max</sub>	mm	6506	7136	7386
	kNm	36	36	36
	mm	1150	2300	2300
	kg	1450	1540	1590

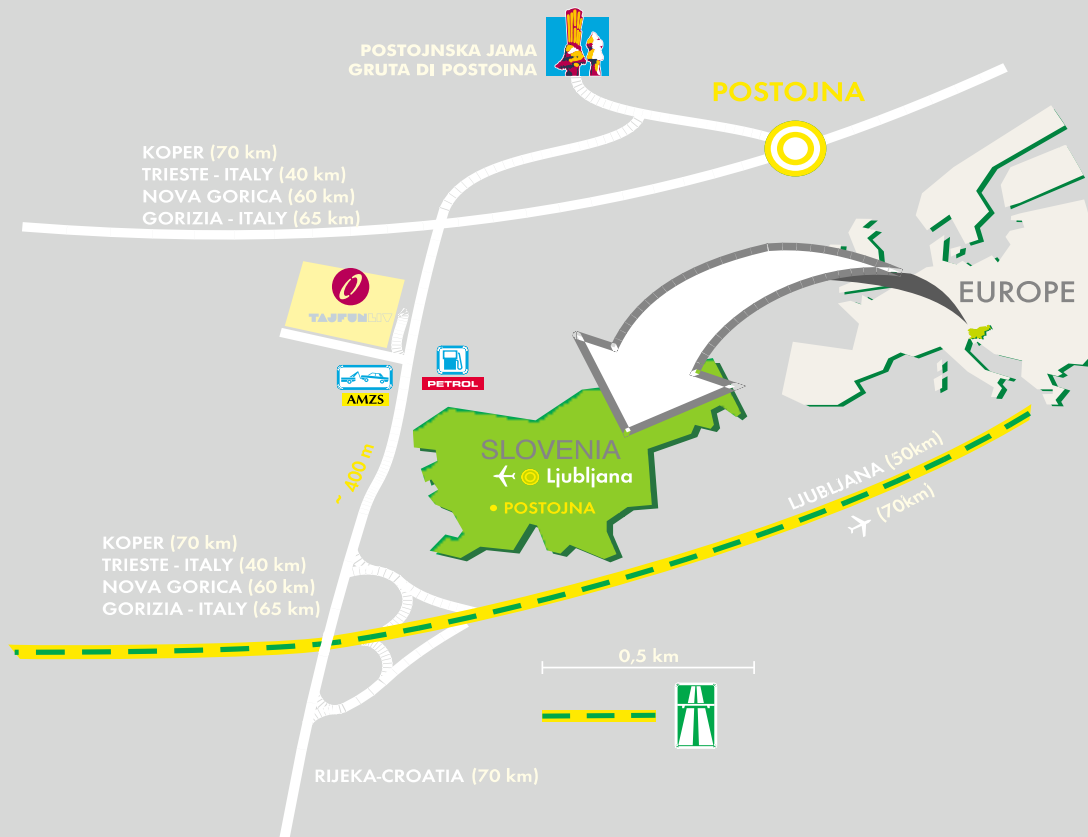
# Grapples



		GO 037	GO 043	GO 053
$A_{nom}$	m <sup>2</sup>	0,36	0,41	0,53
B	m	0,11	0,13	0,15
C	m	1,75	1,91	2,26
D	m	0,78	0,78	0,93
E	m	0,98	1,02	1,16
F	m	0,58	0,64	0,69
G	m	0,94	0,99	1,1
H	m	0,46	0,45	0,49
Opening time at 50 l/min	s	1,9	2,1	2,4
Closing time at 50 l/min	s	2,5	2,6	3
Gripping force ( $A_{nom}$ )	kN	19	18	18,5
Max. operating pressure	MPa	23	23	23
Max. load	kN	40	40	55
Weight	kg	215	240	340







**Tajfun Liv d.o.o.**  
Industrijska cesta 2  
SI-6230 Postojna  
Slovenija

**T:** +386 5 728 38 90  
**F:** +386 5 728 38 63  
**E:** [info@tajfun-liv.si](mailto:info@tajfun-liv.si)

**[www.tajfun-liv.si](http://www.tajfun-liv.si)**

