

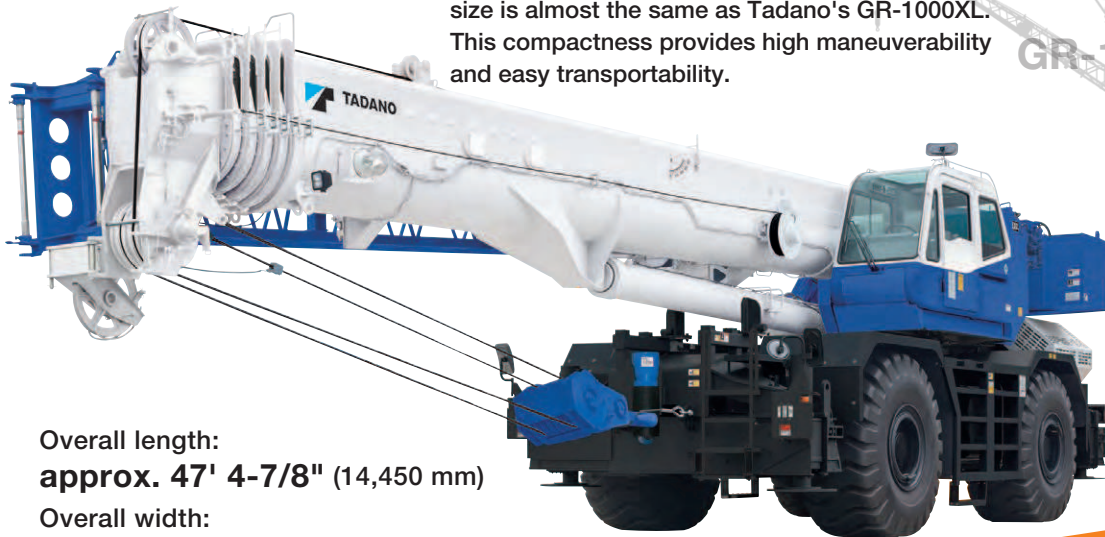
# GR-1200XL

**120 TON CAPACITY (110.0 metric tons)**

## Longer Rounded Boom and Compact Carrier

### Compact carrier

The GR-1200XL has a compact carrier whose size is almost the same as Tadano's GR-1000XL. This compactness provides high maneuverability and easy transportability.



Overall length:  
**approx. 47' 4-7/8"** (14,450 mm)

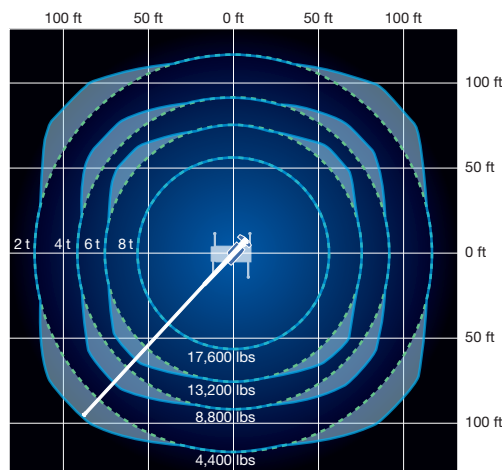
Overall width:  
**approx. 10' 10-1/2"** (3,315 mm)

Overall height:  
**approx. 12' 5-3/8"** (3,795 mm)



### Smart Chart system

Tadano's newly developed Smart Chart taps the potential of a crane by expanding the conventional circular working area into a square one, improving work safety and efficiency.



Carrier length: **28' 4-3/4"**  
(8,655 mm)

**New**  
**120t**  
**model**

Longer boom and larger capacity

**39.4 ft–**  
**183.7 ft**  
(12.0 m–56.0 m)

Max. lifting height:  
**184.0 ft** (56.1 m)  
[Boom only]

**241.4 ft** (73.6 m)  
[Boom + Jib]

Max. working radius:  
**144.3 ft** (44.0 m)  
[Boom only]

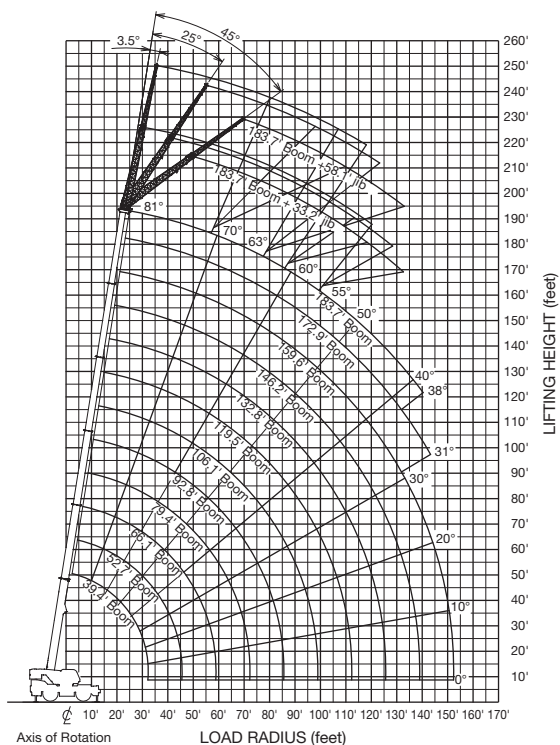
**153.8 ft** (46.9 m)  
[Boom + Jib]

**81.0°**



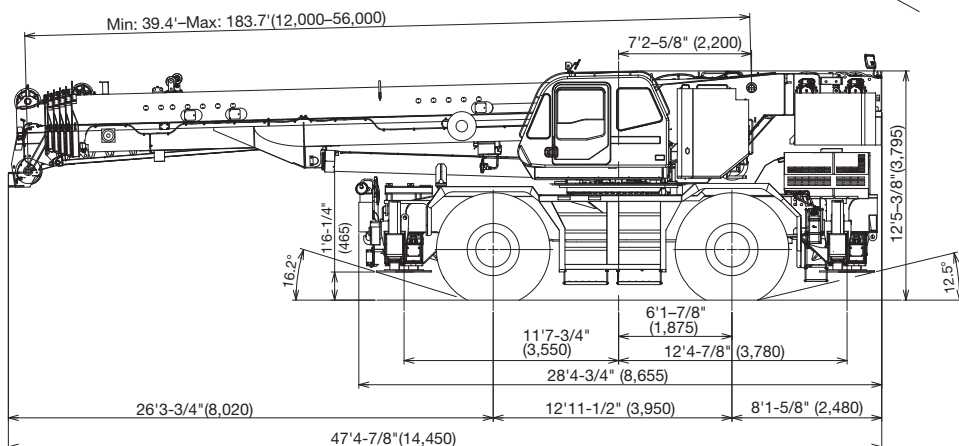
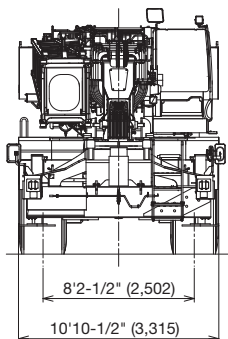
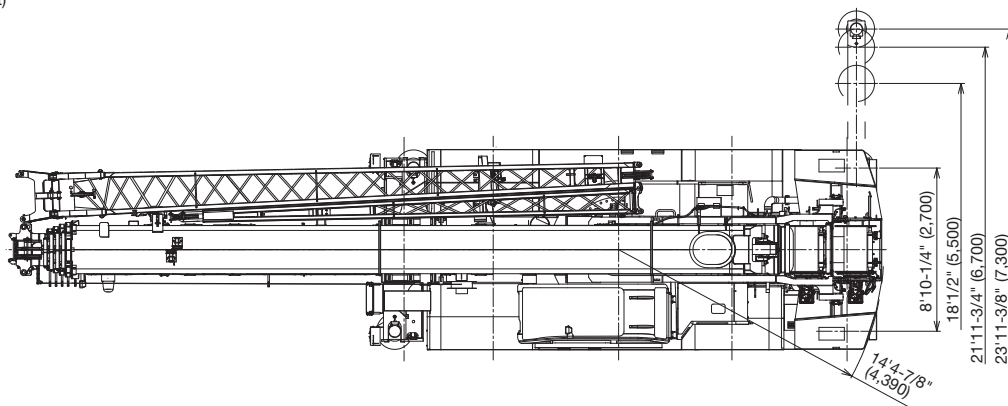
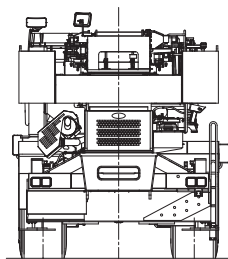
# MODEL: GR-1200XL

## WORKING RANGE



Max. lifting capacity		120 US tons (110 metric tons)
Max. lifting height	Boom only	184.0 ft (56.1 m)
	Boom + Jib	241.4 ft (73.6 m)
Max. working radius	Boom only	144.3 ft (44.0 m)
	Boom + Jib	153.8 ft (46.9 m)
Boom length		39.4 ft–183.7 ft (12.0 m–56.0 m)
Jib length		33.2 ft / 58.1ft (10.1 m/17.7 m)

## DIMENSIONS\*\*



\*\*Dimension is with boom angle at -1.5 degree. ( ) Reference dimensions in mm.

Note: Some specifications are subject to change.



## TADANO AMERICA Corporation

4242 West Greens Road, Houston, TX 77066

Tel: 281-869-0030 Fax: 281-869-0040

www.tadanoamerica.com Email: sales@tadano-cranes.com

Parts Hotline: 713-865-1041 Service Hotline: 281-869-5925

CONEXPO2017\_E\_2017\_3\_500

Printed in USA

Courtesy of CraneMarket