



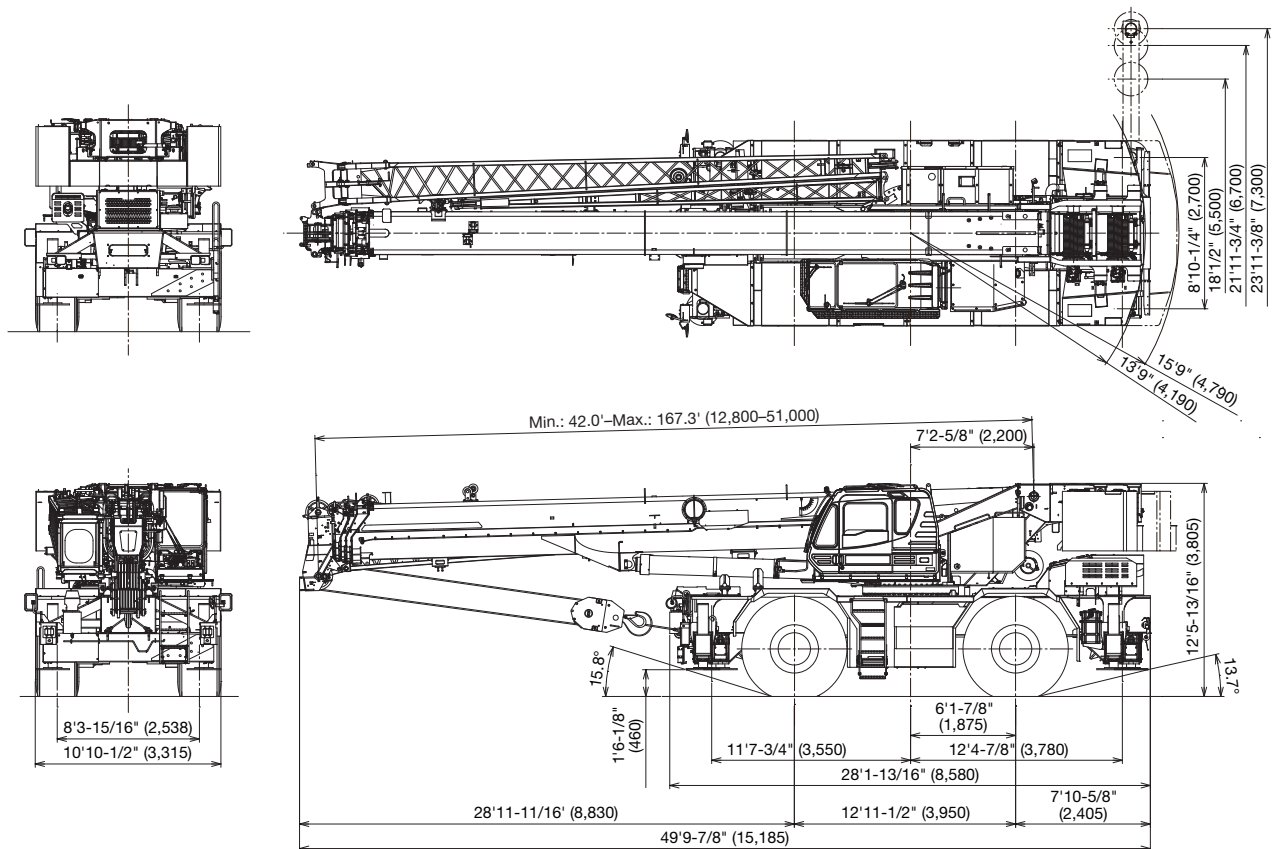
# GR-1000XLL-4

100 Ton (90.7 Metric Ton) Capacity

Form NO. GR-1000-4-00102/US-01

## HYDRAULIC ROUGH TERRAIN CRANE

### DIMENSIONS



Note: Dimension is with boom angle at -1.5 degree.  
( ) Reference dimensions in mm.

### GENERAL DIMENSIONS

	Feet	Meters		Feet	Meters
Turning radius (29.5-25 Tires)			Overall length	approx. 49' 9-7/8"	15.185
4 wheel steer	22' 4"	6.8	Overall width	approx. 10' 10-1/2"	3.315
2 wheel steer	35' 9-3/32"	10.9	Overall height	approx. 12' 5-13/16"	3.805

# CRANE SPECIFICATIONS

## BOOM

5 section full power synchronized telescoping boom, 42.0'-167.3' (12.8 m-51.0 m), of round box construction with 7 sheaves, 17-5/16" (0.44 m) root diameter, at boom head.

The synchronization system consists of 2 telescope cylinders, an extension cable and retraction cable. Hydraulic cylinder fitted with holding valve. 2 easily removable wire rope guards, rope dead end provided on both sides of boom head. Boom telescope sections are supported by wear pads both vertically and horizontally. Extension speed 125.3' in 170 seconds.

**BOOM ELEVATION** - By a double acting hydraulic cylinder with holding valve. Elevation -1.5°-80.5°, combination controls for hand or foot operation. Boom angle indicator. Automatic speed reduction and slow stop function. Boom raising speed 20° to 60° in 46 seconds.

**JIB** - 2 stage bi-fold lattice type, 3.5°, 25° or 45° offset (tilt type). Single sheave, 15-5/8" (0.396 m) root diameter, at the head of both jib sections. Stored alongside base boom section. Jib length is 33.2' (10.1 m) or 58.1' (17.7 m). Assistant cylinders for mounting and stowing, controlled at right side of superstructure. Self stowing jib mounting pins.

## AUXILIARY LIFTING SHEAVE (SINGLE TOP)

Single sheave, 15-5/8" (0.396 m) root diameter. Mounted to main boom head for single line work (stowable).

**ANTI-TWO BLOCK** - Pendant type over-winding cut out device with audio-visual (FAILURE lamp/BUZZER) warning system.

## SLEWING

Hydraulic axial piston motor through planetary slewing speed reducer. Continuous 360° full circle slewing on ball bearing turn table at 1.5 min<sup>-1</sup> {rpm}. Equipped with manually locked/released slewing brake. A 360° positive slewing lock for pick and carry and travel modes, manually engaged in cab. Twin slewing system: Free slewing or lock slewing controlled by selector switch on front console.

## WINCH

**MAIN WINCH** - Variable speed type with grooved drum driven by hydraulic axial piston motor through speed reducer. Power load lowering and raising. Equipped with automatic brake (neutral brake) and counterbalance valve. Controlled independently of auxiliary winch. Equipped with cable follower and drum rotation indicator.

**DRUM** - Grooved 14-1/4" (0.362 m) root diameter x 26-13/16" (0.681 m) wide. Wire rope: 935' of 3/4" diameter rope (285 m of 19 mm). Drum capacity: 1135' (346 m) 7 layers. Maximum single line pull: 1st layer 20,000 lbs (9,090 kg). Maximum permissible line pull wire strength: 14,600 lbs (6,600 kg).

**AUXILIARY WINCH** - Variable speed type with grooved drum driven by hydraulic axial piston motor through speed reducer. Power load lowering and raising. Equipped with automatic brake (neutral brake) and counterbalance valve. Controlled independently of main winch. Equipped with cable follower and drum rotation indicator.

**DRUM** - Grooved 14-1/4" (0.362 m) root diameter x 26-13/16" (0.681 m) wide. Wire rope: 482' of 3/4" diameter rope (147 m of 19 mm). Drum capacity: 1135' (346 m) 7 layers. Maximum single line pull: 1st layer 20,000 lbs (9,090 kg). Maximum permissible line pull wire strength: 14,600 lbs (6,600 kg).

**WIRE ROPE** - Non-rotating 3/4" (19 mm) P·S (19) + 39 x P·7 Breaking Strength 72,800 lbs (33,000 kg)

## HOOK BLOCKS

100 ton (90.7 metric ton)-8 sheaves with swivel hook and safety latch, for 3/4" (19 mm) wire rope.

7.3 ton (6.6 metric ton) - Weighted hook with swivel and safety latch, for 3/4" (19 mm) wire rope.

## COUNTERWEIGHT

Self-removable counterweight ..... 24,700 lbs (11,200 kg)

## HYDRAULIC SYSTEM

**PUMPS** - 2 variable piston pumps for crane functions.

Tandem gear pump for steering, slewing and optional equipment. Powered by carrier engine. Pump disconnect for crane is engaged/disengaged by rotary switch from operator's cab.

**CONTROL VALVES** - Multiple valves actuated by pilot pressure with integral pressure relief valves.

**RESERVOIR** - 210 gallon (795 lit.) capacity. External sight level gauge.

**FILTRATION** - BETA10=10 return filter, full flow with bypass protection, located inside of hydraulic reservoir. Accessible for easy replacement.

**OIL COOLER** - Air cooled fan type.

## CAB AND CONTROLS

Both crane and drive operations can be performed from one cab mounted on rotating superstructure.

20° tilt, Left side, 1 man type, steel construction with sliding door access and safety glass windows opening at side. Door window is powered control. Windshield glass window and roof glass window are shatter-resistant. Tilt-telescoping steering wheel. Adjustable control lever stands for slewing, boom elevating, boom telescoping, auxiliary winch and main winch. Control lever stands can change neutral positions and tilt for easy access to cab. 3 way adjustable operator's seat with high back, headrest and armrest. Engine throttle knob. Foot operated controls: boom elevating boom telescoping, service brake and engine throttle. Hot water cab heater and air conditioning.

Dash-mounted Instrument panel, Multi Function Display, Starter switch (engine start/stop), 12 V power outlet, USB port, drive selector switch, parking brake switch, steering mode select switch, power window switch, pump engaged/disengaged switch, slewing brake switch, telescoping/auxiliary winch select switch, outrigger controls, free slewing/lock slewing selector switch, air conditioning control switch.

Instruments panel - Torque converter oil temperature, engine water temperature, air pressure, fuel, speedometer, tachometer, hour meter and odometer/tripmeter.

Multi Function Display - DEF level gauge, Fuel consumption monitor.

Tadano electronic LOAD MOMENT INDICATOR system (AML-E2) including:

- Control lever lockout function with audible and visual pre-warning
- Number of parts of line
- Boom position indicator
- Outrigger state indicator
- Slewing angle
- Boom angle / boom length / jib offset angle / jib length / load radius / rated lifting capacities / actual loads read out
- Potential lifting height
- Ratio of actual load moment to rated load moment indication
- Automatic Speed reduction and slow stop function on boom elevation and slewing
- Working condition register switch
- Load radius / boom angle / tip height / slewing range preset function
- External warning lamp
- Tare function
- Main Hydraulic oil pressure
- Fuel consumption monitor

- Main winch / auxiliary winch select
- Drum rotation indicator (audible and visible type) main and auxiliary winch
- On rubber indicator

TADANO AML-E2 monitors outrigger extended length and automatically programs the corresponding "RATED LIFTING CAPACITIES" table.

Operator's right hand console includes transmission gear selector, slewing lock lever and sight level bubble.

Upper console includes, roof washer and wiper switch, emergency outrigger set up key switch, jib equipped / removed select switch, high speed winch (main / aux) switch, Cab tilt switch, Pump disconnect enable switch and boom emergency telescoping switch (2nd and 3rd-top).

NOTE: Each crane motion speed is based on unladen conditions.

## CARRIER SPECIFICATIONS

**TYPE** - Rear engine, left hand steering, driving axle 2-way selected type by manual switch, 4 x 2 front drive, 4 x 4 front and rear drive.

**FRAME** - High tensile steel, all welded mono-box construction.

**TRANSMISSION** - Electronically controlled full automatic transmission. Torque converter driving full powershift with driving axle selector. 6 forward and 2 reverse speeds, constant mesh.

- 3 speeds - high range - 2 wheel drive; 4 wheel drive
- 3 speeds - low range - 4 wheel drive

**TRAVEL SPEED** - 22 mph (36 km/h)

**AXLE** - Front: Full floating type, steering and driving axle with planetary reduction. Rear: Full floating type, steering and driving axle with planetary reduction and non-spin rear differential.

**STEERING** - Hydraulic power steering controlled by steering wheel. Four steering modes available: 2 wheel front, 2 wheel rear, 4 wheel coordinated and 4 wheel crab.

**SUSPENSION** - Front: Rigid mounted to frame. Rear: Pivot mounted with hydraulic lockout device.

**BRAKE SYSTEMS** - Service: Air over hydraulic disc brakes on all 4 wheels. Parking / Emergency: Spring applied-air released brake acting on input shaft of front axle. Auxiliary: Electro-pneumatic operated exhaust brake.

**TIRES** - 29.5-25 36PR (OR) Air pressure: 68 psi (470 kPa)  
29.5-25 40PR (OR) Air pressure: 67 psi (465 kPa)

**OUTRIGGERS** - Four hydraulic, beam and jack outriggers. Vertical jack cylinders equipped with integral holding valve. Each outrigger beam and jack is controlled independently from cab. Beams extend to 23' 11-3/8" (7.3 m) center-line and retract to within 10' 10-1/2" (3.315 m) overall width with floats. Outrigger jack floats are attached thus eliminating the need of manually attaching and detaching them. Controls and sight bubble located in superstructure cab. Four outrigger extension lengths are provided with corresponding "RATED LIFTING CAPACITIES" for crane duty in confined areas.

- Min. Extension 8' 10-1/4" (2.7 m) center to center
- Mid. Extension 18' 1/2" (5.5 m) center to center
- Mid. Extension 21' 11-3/4" (6.7 m) center to center
- Max. Extension 23' 11-3/8" (7.3 m) center to center

Float size (Diameter) 1' 11- 5/8" (0.6 m)

### ENGINE

Model	Cummins B6.7
Type	Direct injection diesel
No. of cylinders	6
Combustion	4 cycle, turbo charged and after cooled
BoreXStroke, in. (mm)	4.212 X 4.882 (107 X 124)
Displacement, cu. in (liters)	409 (6.7)
Air inlet heater	24 volt preheat
Air cleaner	Dry type, replaceable element
Oil filter	Full flow with replaceable element
Fuel filter	Full flow with replaceable element
Fuel tank, gal. (liters)	79.2 (300), right side of carrier
Cooling	Liquid pressurized, recirculating by-pass

Radiator	Fin and tube core, thermostat controlled
Fan, in. (mm)	Suction type, 9-blade, 28 (711) dia.
Starting	24 volt
Charging	24 volt system, negative ground
Battery	2-120 amp. Hour
Compressor, air, CFM (l /min)	17.0 CFM (481) at 2,400 rpm
Output, Max. HP (kW)	Gross 280 (209) at 2,200 rpm
Torque, Max. ft-lb (Nm)	850 (1,152) at 1,500 rpm
Capacity, gal. (liters)	
Cooling water	2.7 (10)
Lubrication	4.0 (15)
Fuel	79.2 (300)
DEF/AdBlue	15.0 (57)

# STANDARD EQUIPMENT

- 5 section full power partially synchronized boom  
42.0'-167.3' (12.8 m-51.0 m)
- 33.2' or 58.1' (10.1 m or 17.7 m) bi-fold lattice jib (tilt type)  
with 3.5°, 25° or 45° pinned offsets and self storing pins.
- Quick reeving type bi-fold jib
- Anti-Two block device (overwind cutout)
- Winch drum camera with light
- LED work lights
- Variable speed main winch with grooved drum, cable follower, drum  
rotation indicator (audible, visible and thumper type) and 935' of 3/4" cable.
- Variable speed auxiliary winch with grooved drum, cable follower, drum  
rotation indicator (audible, visible and thumper type) and 482' of 3/4" cable.
- Auxiliary lifting sheave (single top) stowable
- 2-speed winch
- 100 ton (90.7 metric ton) hook block - 8 sheave with swivel hook  
and safety latch for 3/4" (19 mm) wire rope
- 7.3 ton (6.6 metric ton) hook with swivel
- Tadano twin slewing system and 360° positive slewing lock
- Positive control
- Hydraulic oil cooler
- 3 way adjustable cloth seat with armrests, high back and seat belt
- Tilt-telescoping steering wheel
- Tinted safety glass and sun visor
- Front windshield wiper and washer
- Roof window wiper and washer
- Power window (cab door)
- 12V power outlet
- Ashtray
- Cab floor mat
- Pump disconnect in operator's cab
- Air conditioner (hot water heater and cooler)
- Full instrumentation package
- Self centering finger control levers with pilot control
- Control pedals for boom elevating and boom telescoping
- Low oil pressure / high water temp. warning device (visual)
- Air cleaner dust indicator
- Cup holder
- Battery disconnect
- USB port
- 20° tilt cab
- Wind speed indicator
- Emergency steering system
- Tadano electronic load moment indicator system (AML-E2)
- Boom angle indicator
- Outrigger extension length detector
- Electronic crane monitoring system
- Rear view camera
- Right front view camera
- Fenders
- Air dryer
- Complete highway light package
- Towing hooks-Front and rear
- Hook block tie down (front bumper)
- Weighted hook storage compartment
- Halogen head lamp
- Independently controlled outriggers
- Four outrigger extension positions
- Self-storing outrigger pads
- Electronic controlled automatic transmission driven by torque converter
- 4 X 4 X 4 drive / steer
- Non-spin rear differential
- Automatic rear axle oscillation lockout system
- 29.5-25 36 PR tires
- 29.5-25 40 PR tires
- Disc brakes
- Water separator with filter (high filtration)
- Back-up alarm
- 24 volt electric system
- Tool storage compartment
- Tire inflation kit
- Cummins B6.7 turbo charged  
after cooled engine (280 HP) with exhaust brake
- Engine over-run alarm
- Lifting eyes
- Telematics (machine data logging and monitoring system)  
with HELLO-NET via internet (availability depends on countries)
- Fuel consumption monitor
- Eco mode system
- Self-removable counterweight
- Radiator cover
- Clearance sonar (Rear side)
- Automatic pump disconnect
- Over unwinding prevention

# HOISTING PERFORMANCE

## LINE SPEEDS AND PULLS

Layer	Main or auxiliary hoist - 14'-1/4" (0.362 m) drum							
	Line speeds <sup>1</sup>				Line pulls Available <sup>2</sup>			
	Low		High		Low		High	
	F.P.M	m/min	F.P.M	m/min	Lbs.	kgf	Lbs.	kgf
1st	278	84	387	118	20,000	9,090	14,400	6,520
2nd	302	92	421	128	18,100	8,230	13,000	5,900
3rd	327	99	456	139	16,600	7,520	11,900	5,390
4th	352	107	491	149	15,300	6,920	10,900	4,960
5th	377	115	526	160	14,100	6,410	10,100	4,600
6th	402	122	560	170	13,200	5,970	9,400	4,280
7th <sup>3</sup>	427	130	595	181	12,300	5,590	8,800	4,010

- Maximum permissible line pull wire strength  
14,600 lbs (6,600 kg).

<sup>1</sup> Line speeds based only on hook block, not loaded.  
<sup>2</sup> Developed by machinery with each layer of wire rope, but not based  
on rope strength or other limitation in machinery or equipment.  
<sup>3</sup> Seventh layer of wire rope are not recommended  
for hoisting operations.

## DRUM WIRE ROPE CAPACITIES

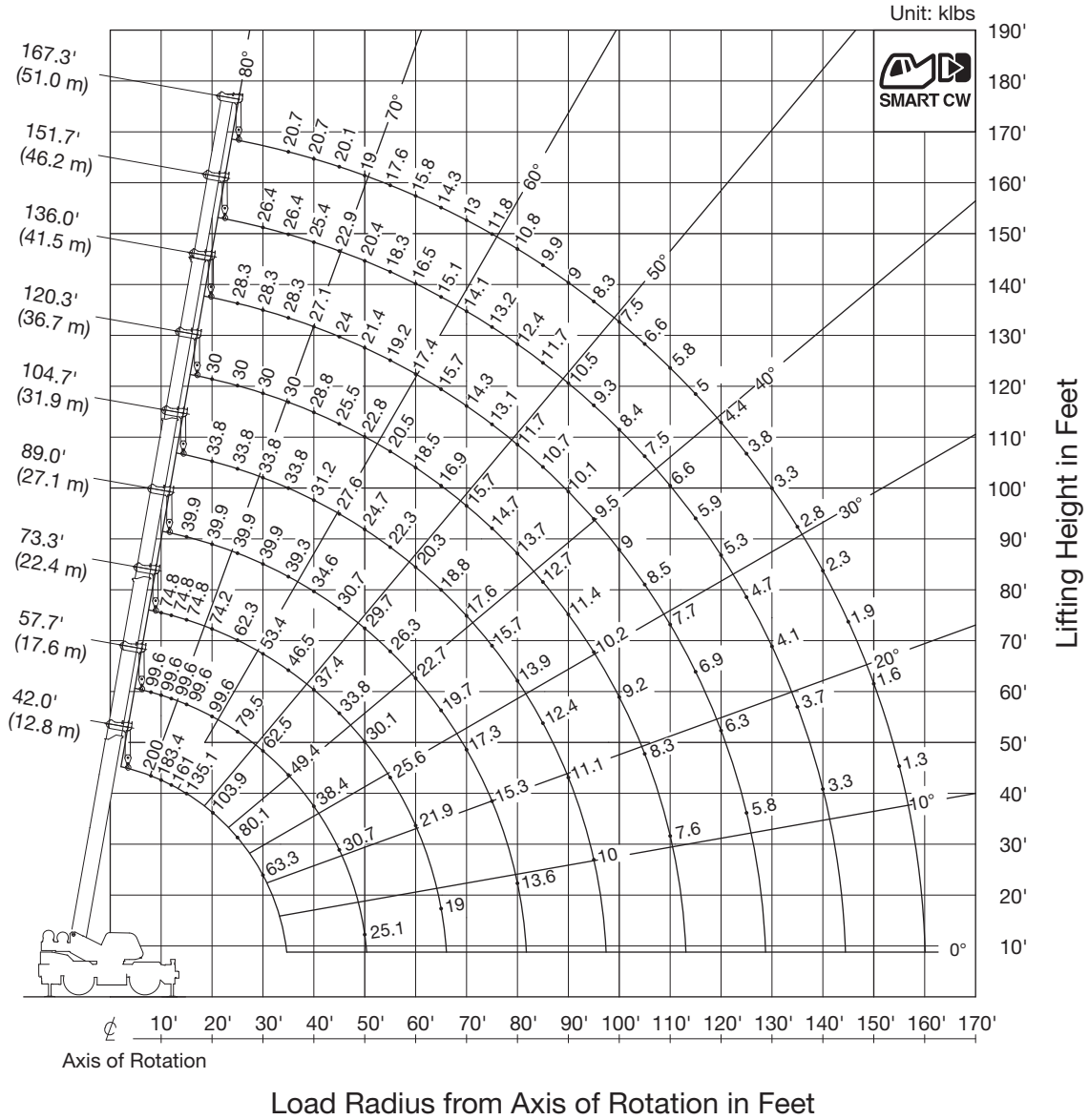
Wire rope layer	Main and auxiliary drum grooved lagging 30/4" (19 mm) wire rope			
	Rope per layer m		Total wire rope m	
	Feet	Meters	Feet	Meters
1	128.0	39.0	128.0	39.0
2	139.4	42.5	267.4	81.5
3	150.9	46.0	418.3	127.5
4	162.1	49.4	580.4	176.9
5	173.9	53.0	754.3	229.9
6	185.4	56.5	939.6	286.4
7	196.9	60.0	1,136.5	346.4

## DRUM DIMENSIONS

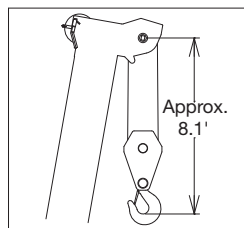
	Inch	mm
Root diameter	14-1/4"	362
Length Flange diameter	26-13/16"	681
	25-7/8"	657

# GR-1000XLL-4 WORKING RANGE CHART

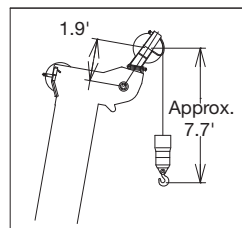
## SMART COUNTERWEIGHT 360° ROTATION



BOOM



SINGLE TOP

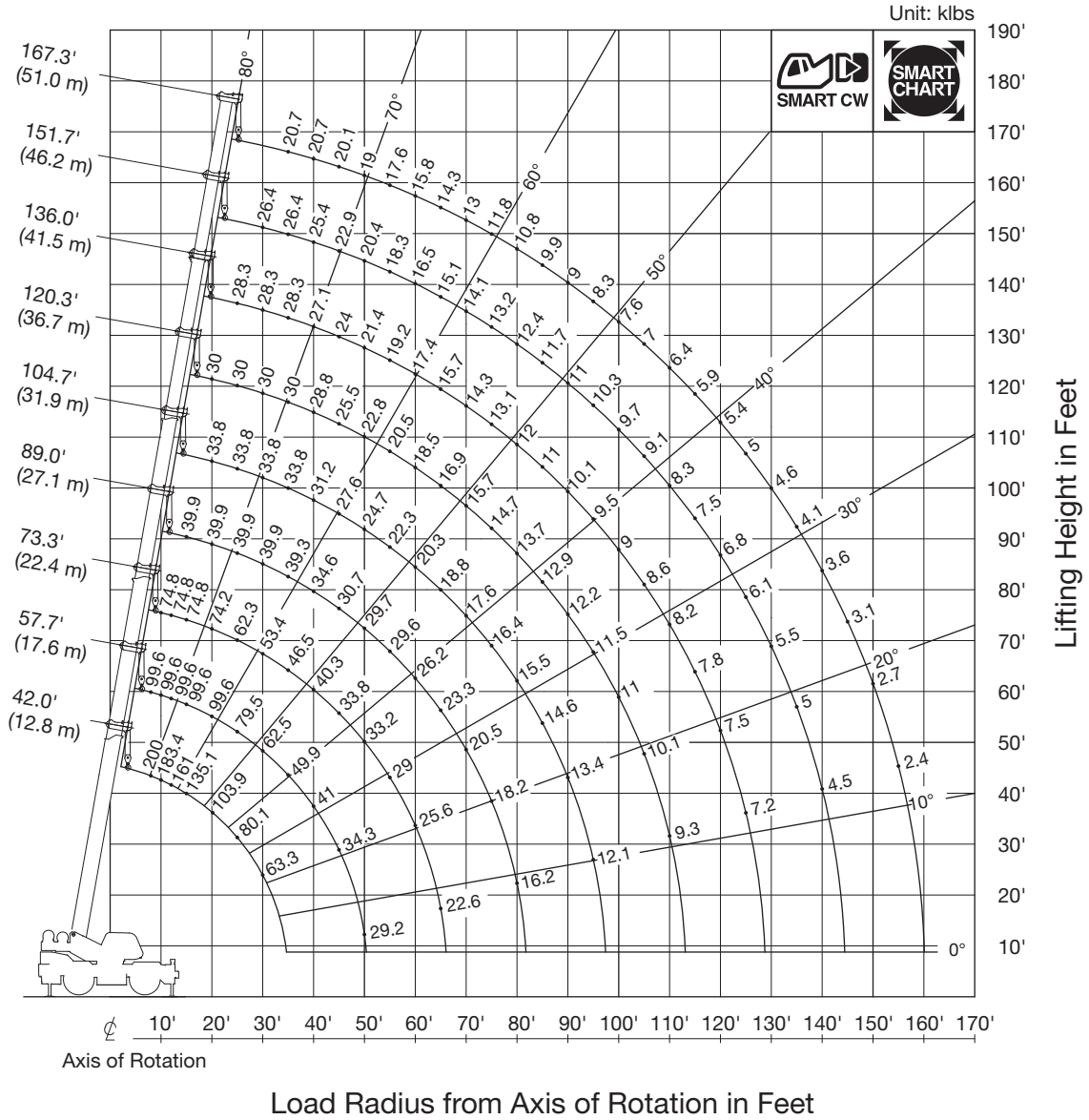


NOTE: Boom geometry shown is for unloaded condition and machine standing level on firm supporting surface. Boom deflection and subsequent radius and boom angle change must be accounted for when applying load to hook. When boom length is same as telescoping mode 1 and 2, it show large load.

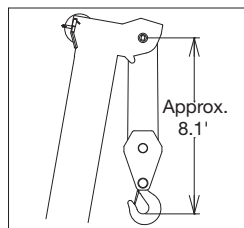


# GR-1000XLL-4 WORKING RANGE CHART

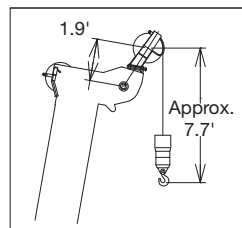
## SMART COUNTERWEIGHT SMART CHART



BOOM

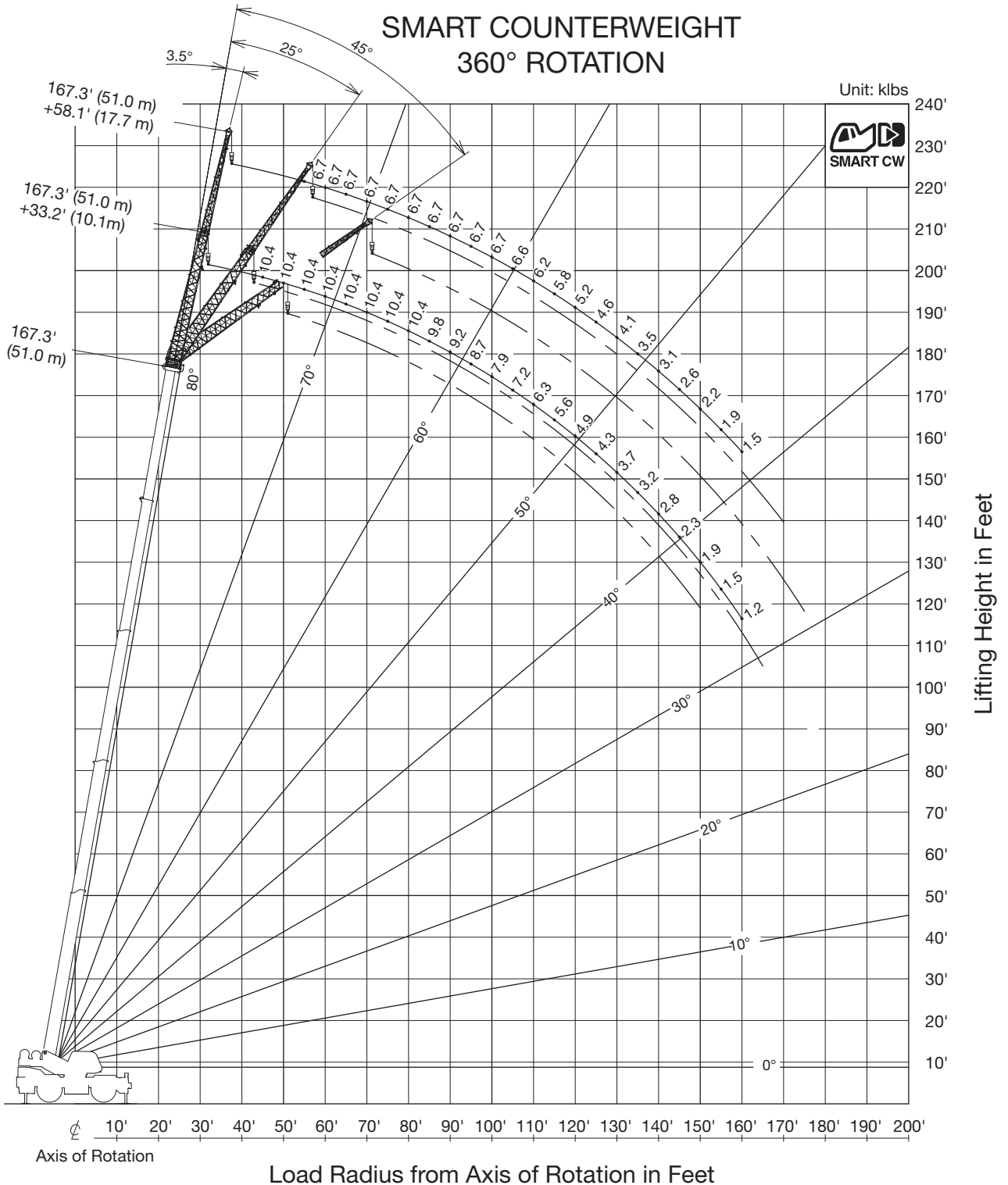


SINGLE TOP

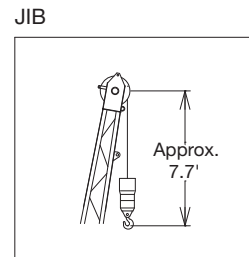


NOTE: Boom geometry shown is for unloaded condition and machine standing level on firm supporting surface. Boom deflection and subsequent radius and boom angle change must be accounted for when applying load to hook. When boom length is same as telescoping mode 1 and 2, it show large load.

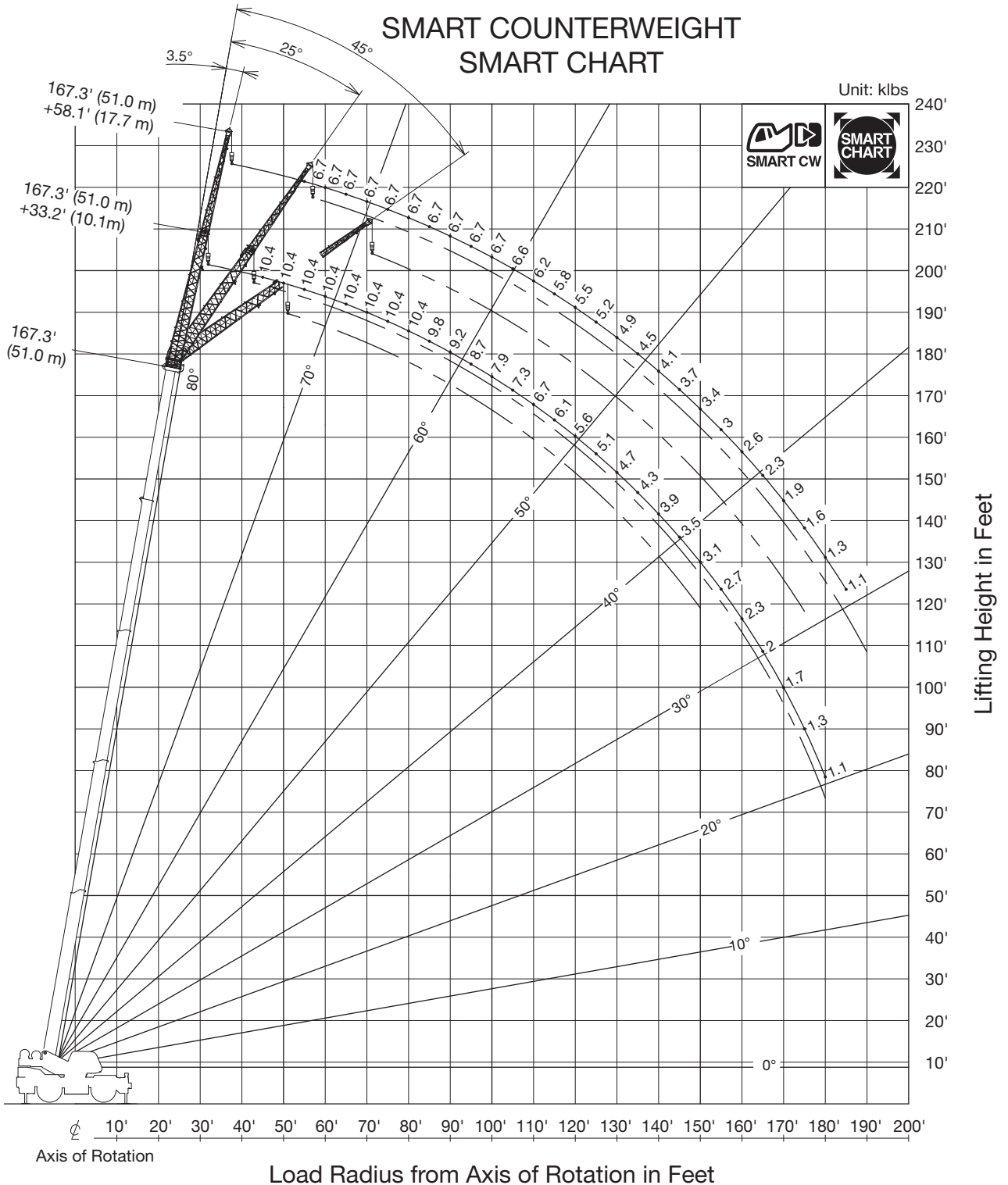
# GR-1000XLL-4 WORKING RANGE CHART



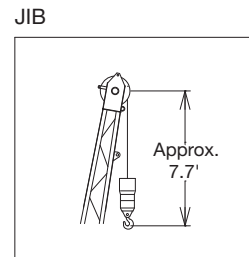
NOTE: Jib geometry shown are for unloaded condition and machine standing level on firm supporting surface. Boom deflection and subsequent radius and boom angle change must be accounted for when applying load to hook.



# GR-1000XLL-4 WORKING RANGE CHART




NOTE: Jib geometry shown are for unloaded condition and machine standing level on firm supporting surface. Boom deflection and subsequent radius and boom angle change must be accounted for when applying load to hook.





# GR-1000XLL-4 RATED LIFTING CAPACITIES (IN POUNDS)

		COUNTERWEIGHT 24,700lbs (11.2 t) ON OUTRIGGERS FULLY EXTENDED 23' 11-3/8" (7.3 m) SPREAD 360° ROTATION SMART COUNTERWEIGHT														
		A	42.0' (12.8 m)	57.7' (17.6 m)	73.3' (22.4 m)		89.0' (27.1 m)		104.7' (31.9 m)		120.3' (36.7 m)		136.0' (41.5 m)		151.7' (46.2 m)	
B																
8		200,000	99,600													
10		183,400	99,600	74,800	33,800											
12		161,000	99,600	74,800	33,800											
15		135,100	99,600	74,800	33,800	39,900	29,700									
20		103,900	99,600	74,200	33,800	39,900	29,700	33,800	27,700	30,000	27,600					
25		80,100	79,500	62,300	33,800	39,900	29,700	33,800	27,700	30,000	27,600	28,300	27,500			
30		63,300	62,500	53,400	33,800	39,900	29,700	33,800	27,700	30,000	27,600	28,300	26,100	26,400	24,100	
35			49,400	46,500	33,800	39,300	29,700	33,800	27,700	30,000	27,400	28,300	23,900	26,400	23,600	20,700
40			38,400	37,400	33,800	34,600	29,700	31,200	27,700	28,800	25,000	27,100	21,500	25,400	22,000	20,700
45			30,700	29,800	33,800	30,700	29,700	27,600	26,300	25,500	23,000	24,000	19,500	22,900	20,500	20,100
50			25,100	24,100	30,100	26,200	29,700	24,700	23,900	22,800	21,200	21,400	17,800	20,400	19,100	19,000
55				19,800	25,600	21,800	26,300	22,300	22,000	20,500	19,800	19,200	16,300	18,300	17,600	17,600
60				16,400	21,900	18,300	22,700	19,300	20,300	18,500	18,200	17,400	15,000	16,500	16,200	15,800
65				13,600	19,000	15,400	19,700	16,500	18,800	16,800	16,900	15,700	14,000	14,900	15,100	14,300
70					13,100	17,300	14,100	17,600	14,900	15,700	14,300	13,000	13,600	14,100	13,000	13,000
75					11,100	15,300	12,100	15,700	12,900	14,700	13,100	12,100	12,400	13,200	11,800	11,800
80					9,400	13,600	10,400	13,900	11,200	13,700	11,700	11,400	11,300	12,400	10,800	10,800
85								9,000	12,400	9,700	12,700	10,200	10,700	10,400	11,700	9,900
90								7,700	11,100	8,400	11,400	9,000	10,100	9,300	10,500	9,000
95								6,600	10,000	7,300	10,200	7,800	9,500	8,200	9,300	8,300
100										6,300	9,200	6,800	9,000	7,200	8,400	7,500
105										5,500	8,300	5,900	8,500	6,300	7,500	6,600
110										4,700	7,600	5,100	7,700	5,500	6,600	5,800
115												4,400	6,900	4,800	5,900	5,000
120												3,800	6,300	4,100	5,300	4,400
125												3,300	5,800	3,500	4,700	3,800
130														3,000	4,100	3,300
135														2,600	3,700	2,800
140														2,200	3,300	2,300
145																1,900
150																1,600
155																1,300
Telescoping mode		1, 2	1	1	2	1	2	1	2	1	2	1	2	1	2	1, 2
2nd Boom		0	50	100	0	100	0	100	0	100	0	100	0	100	50	100
3rd Boom		0	0	0	33	16	50	33	66	50	83	66	100	83	100	100
4th Boom		0	0	0	33	16	50	33	66	50	83	66	100	83	100	100
Top Boom		0	0	0	33	16	50	33	66	50	83	66	100	83	100	100

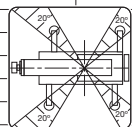
A: Boom length in feet  
 B: Load radius in feet

NOTE: The lifting capacity data stored in the LOAD MOMENT INDICATOR (AML-E2) is based on the standard number of parts of line listed in the chart. Standard number of parts of line for each boom length should be according to the following table.

Boom length in feet (meters)	42.0' (12.8 m)	42.0' to 73.3' (12.8 m to 22.4 m)		73.3' to 167.3' (22.4 m to 51 m)	Single top jib
Telescoping mode	1, 2	1	2	1, 2	1, 2
Number of parts of line	16	8	4	4	1

# GR-1000XLL-4 RATED LIFTING CAPACITIES (IN POUNDS)

		COUNTERWEIGHT 24,700lbs (11.2 t) ON OUTRIGGERS FULLY EXTENDED 23' 11-3/8" (7.3 m) SPREAD															
		SMART CHART SMART COUNTERWEIGHT															
A		42.0' (12.8 m)	57.7' (17.6 m)	73.3' (22.4 m)		89.0' (27.1 m)		104.7' (31.9 m)		120.3' (36.7 m)		136.0' (41.5 m)		151.7' (46.2 m)		167.3' (51 m)	
B																	
8		200,000	99,600														
10		183,400	99,600	74,800	33,800												
12		161,000	99,600	74,800	33,800												
15		135,100	99,600	74,800	33,800	39,900	29,700										
20		103,900	99,600	74,200	33,800	39,900	29,700	33,800	27,700	30,000	27,600						
25		80,100	79,500	62,300	33,800	39,900	29,700	33,800	27,700	30,000	27,600	28,300	27,500				
30		63,300	62,500	53,400	33,800	39,900	29,700	33,800	27,700	30,000	27,600	28,300	26,100	26,400	24,100		
35			49,900	46,500	33,800	39,900	29,700	33,800	27,700	30,000	27,400	28,300	23,900	26,400	23,600	20,700	
40			41,000	40,300	33,800	34,600	29,700	31,200	27,700	28,800	25,000	27,100	21,500	25,400	22,000	20,700	
45			34,300	33,600	33,800	30,700	29,700	27,600	26,300	25,500	23,000	24,000	19,500	22,900	20,500	20,100	
50			29,200	28,400	33,200	27,500	29,700	24,700	23,900	22,800	21,200	21,400	17,800	20,400	19,100	19,000	
55				24,200	29,000	24,800	29,600	22,300	20,500	19,800	19,200	16,300	18,300	17,600	17,600		
60				20,200	25,600	22,200	26,200	20,200	20,300	18,500	18,200	17,400	15,000	16,500	16,200	15,800	
65				17,100	22,600	18,900	23,300	18,300	18,800	16,800	16,900	15,700	14,000	14,900	15,100	14,300	
70						16,100	20,500	16,800	17,600	15,400	15,700	14,300	13,000	13,600	14,100	13,000	
75						13,900	18,200	15,000	16,400	14,100	14,700	13,100	12,100	12,400	13,200	11,800	
80						11,900	16,200	13,000	15,500	12,900	13,700	12,000	11,400	11,300	12,400	10,800	
85								11,300	14,600	11,900	12,900	11,000	10,700	10,400	11,700	9,900	
90								9,900	13,400	10,600	12,200	10,100	10,100	9,500	11,000	9,000	
95								8,600	12,100	9,300	11,500	9,300	9,500	8,700	10,300	8,300	
100										8,200	11,000	8,600	9,000	8,000	9,700	7,600	
105										7,200	10,100	7,700	8,600	7,400	9,100	7,000	
110										6,300	9,300	6,800	8,200	6,800	8,300	6,400	
115												6,000	7,800	6,300	7,500	5,900	
120												5,300	7,500	5,600	6,800	5,400	
125												4,700	7,200	5,000	6,100	5,000	
130														4,400	5,500	4,600	
135														3,800	5,000	4,100	
140														3,400	4,500	3,600	
145																3,100	
150																2,700	
155																2,400	
Telescoping mode		1, 2	1	1	2	1	2	1	2	1	2	1	2	1	2	1, 2	
2nd Boom		0	50	100	0	100	0	100	0	100	0	100	0	100	50	100	
3rd Boom		0	0	0	33	16	50	33	66	50	83	66	100	83	100	100	
4th Boom		0	0	0	33	16	50	33	66	50	83	66	100	83	100	100	
Top Boom		0	0	0	33	16	50	33	66	50	83	66	100	83	100	100	



A: Boom length in feet  
B: Load radius in feet

NOTE: The lifting capacity data stored in the LOAD MOMENT INDICATOR (AML-E2) is based on the standard number of parts of line listed in the chart. Standard number of parts of line for each boom length should be according to the following table.

Boom length in feet (meters)	42.0' (12.8 m)	42.0' to 73.3' (12.8 m to 22.4 m)	73.3' to 167.3' (22.4 m to 51 m)	Single top jib
Telescoping mode	1, 2	1 2	1, 2	1, 2
Number of parts of line	16	8 4	4	1

# GR-1000XLL-4 RATED LIFTING CAPACITIES (IN POUNDS)

SMART COUNTERWEIGHT		COUNTERWEIGHT 24,700 lbs (11.2 t) ON OUTRIGGERS FULLY EXTENDED 23' 11-3/8" (7.3 m) SPREAD 360° ROTATION					
		167.3' (51 m) Boom + 33.2' (10.1 m) JIB		167.3' (51 m) Boom + 58.1' (17.7 m) JIB			
B	3.5° Offset	25° Offset	45° Offset	B	3.5° Offset	25° Offset	45° Offset
45	10,400			45			
50	10,400			50			
55	10,400			55	6,700		
60	10,400			60	6,700		
65	10,400	10,400		65	6,700		
70	10,400	10,400	9,800	70	6,700		
75	10,400	10,400	9,600	75	6,700	6,200	
80	10,400	10,200	9,400	80	6,700	6,100	
85	9,800	9,500	9,000	85	6,700	5,900	
90	9,200	8,500	8,500	90	6,700	5,800	4,800
95	8,700	8,000	7,700	95	6,700	5,600	4,700
100	7,900	7,600	7,300	100	6,700	5,500	4,600
105	7,200	7,200	6,900	105	6,600	5,400	4,500
110	6,300	6,800	6,600	110	6,200	5,300	4,400
115	5,600	6,300	6,300	115	5,800	5,200	4,300
120	4,900	5,600	6,000	120	5,200	5,000	4,200
125	4,300	4,900	5,300	125	4,600	4,900	4,200
130	3,700	4,300	4,700	130	4,100	4,600	4,100
135	3,200	3,800	4,100	135	3,500	4,400	4,000
140	2,800	3,200	3,500	140	3,100	4,100	4,000
145	2,300	2,800	3,000	145	2,600	3,500	3,900
150	1,900	2,300	2,500	150	2,200	3,100	3,600
155	1,500	1,900		155	1,900	2,600	3,100
160	1,200	1,500		160	1,500	2,200	2,700
165		1,100		165		1,900	2,200
170				170		1,500	1,800
175				175			1,400
Telescoping mode	1, 2	1, 2	1, 2	Telescoping mode	1, 2	1, 2	1, 2

SMART COUNTERWEIGHT		COUNTERWEIGHT 24,700 lbs (11.2 t) ON OUTRIGGERS FULLY EXTENDED 23' 11-3/8" (7.3 m) SPREAD 360° ROTATION						
		151.7' (46.2 m) Boom + 33.2' (10.1 m) JIB			151.7' (46.2 m) Boom + 58.1' (17.7 m) JIB			
B	3.5° Offset	25° Offset	45° Offset	B	3.5° Offset	25° Offset	45° Offset	
40	12,500	11,500		40				
45	12,500	11,500		45				
50	12,500	11,500		50	7,600	7,200		
55	12,500	11,500	12,500	55	7,600	7,200		
60	12,500	11,500	12,500	60	7,600	7,200		
65	12,500	11,500	12,100	65	7,600	7,200		
70	12,500	11,500	11,700	70	7,600	7,200	6,500	
75	12,500	10,900	11,400	75	7,600	7,200	6,300	
80	11,700	10,300	11,000	80	7,600	7,200	6,100	
85	10,700	9,800	10,700	85	7,600	7,200	6,000	
90	9,800	8,600	10,100	90	7,600	7,200	5,900	
95	9,000	8,000	9,300	95	7,300	7,000	5,700	
100	8,200	7,600	8,600	100	7,100	6,500	5,600	
105	7,300	7,100	7,900	105	6,900	6,100	5,400	
110	6,500	6,700	7,200	110	6,700	5,800	5,300	
115	5,700	6,300	6,400	115	6,200	5,400	5,200	
120	5,000	6,000	5,600	120	5,500	5,100	5,000	
125	4,400	5,400	5,000	125	4,900	4,800	4,800	
130	3,800	4,800	4,400	130	4,300	4,600	4,700	
135	3,300	4,300	3,800	135	3,800	4,300	4,600	
140	2,800	3,800	3,300	140	3,300	4,100	4,200	
145	2,400	3,300	2,800	145	2,800	3,700	3,900	
150	2,000	2,900	2,300	150	2,400	3,400	3,700	
155	1,600	2,500	1,900	155	2,100	3,000	3,400	
160	1,300	2,200	1,500	160	1,700	2,600	3,200	
165		1,900	1,100	165	1,400	2,300	2,800	
170		1,500		170	1,100	2,000	2,400	
175		1,300		175		1,700	2,100	
180				180		1,400	1,700	
185				185		1,200	1,400	
Telescoping mode	1	2	1	2	1	2	1	2

SMART COUNTERWEIGHT		COUNTERWEIGHT 24,700 lbs (11.2 t) ON OUTRIGGERS FULLY EXTENDED 23' 11-3/8" (7.3 m) SPREAD 360° ROTATION						
		120.3' (36.7 m) Boom + 33.2' (10.1 m) JIB			120.3' (36.7 m) Boom + 58.1' (17.7 m) JIB			
B	3.5° Offset	25° Offset	45° Offset	B	3.5° Offset	25° Offset	45° Offset	
30	14,600	14,600		30				
35	14,600	14,600		35				
40	14,600	14,600	14,400	40	9,900	8,700		
45	14,600	14,600	13,800	45	9,900	8,700		
50	14,600	14,600	13,200	50	9,900	8,700		
55	14,600	14,600	12,700	55	9,900	8,700		
60	14,600	14,400	12,200	60	9,900	8,700	7,200	
65	14,600	13,400	11,800	65	9,600	8,700	7,000	
70	14,600	12,600	11,400	70	9,100	8,700	6,500	
75	13,900	12,400	11,000	75	8,700	8,400	6,300	
80	12,800	11,700	10,700	80	8,300	8,000	6,300	
85	11,500	11,000	10,400	85	8,000	7,700	6,100	
90	10,200	10,300	10,100	90	7,700	7,400	5,800	
95	9,000	9,800	9,800	95	7,400	7,100	5,600	
100	8,000	9,300	8,700	100	7,100	6,900	5,400	
105	7,000	8,800	7,700	105	6,800	6,600	5,200	
110	6,200	8,300	6,800	110	6,600	6,400	5,100	
115	5,400	7,600	6,000	115	6,400	6,200	4,900	
120	4,800	6,900	5,200	120	6,200	6,000	4,800	
125	4,100	6,300	4,500	125	6,000	5,800	4,700	
130	3,600	5,800	3,900	130	5,800	5,600	4,600	
135	3,100	5,200	3,300	135	5,600	5,400	4,500	
140	2,600	4,700		140	5,400	5,200	4,400	
145	2,200	4,300		145	5,200	5,000	4,300	
150				150	5,000	4,800	4,200	
155				155	4,800	4,600	4,100	
160				160	4,600	4,400	4,000	
165				165	4,400	4,200	3,900	
170				170	4,200	4,000	3,800	
Telescoping mode	1	2	1	2	1	2	1	2

B: Load radius in feet

# GR-1000XLL-4 RATED LIFTING CAPACITIES (IN POUNDS)


		COUNTERWEIGHT 24,700 lbs (11.2 t) ON OUTRIGGERS FULLY EXTENDED 23' 11-3/8" (7.3 m) SPREAD					
		SMART CHART			SMART CHART		
		167.3' (51 m) Boom + 33.2' (10.1 m) JIB			167.3' (51 m) Boom + 58.1' (17.7 m) JIB		
B		3.5° Offset	25° Offset	45° Offset	3.5° Offset	25° Offset	45° Offset
45		10,400					
50		10,400					
55		10,400					
60		10,400					
65		10,400	10,400				
70		10,400	10,400	9,800			
75		10,400	10,200	9,400			
80		10,400	9,500	9,000			
85		9,800	9,000	8,500			
90		9,200	8,500	8,100			
95		8,700	8,000	7,700			
100		7,900	7,600	7,300			
105		7,300	7,200	6,900			
110		6,700	6,800	6,600			
115		6,100	6,500	6,300			
120		5,600	5,900	6,000			
125		5,100	5,400	5,600			
130		4,700	5,000	5,100			
135		4,300	4,600	4,700			
140		3,900	4,200	4,300			
145		3,500	3,800	3,900			
150		3,100	3,400	3,500			
155		2,700	3,100				
160		2,300	2,700				
165		2,000	2,300				
170		1,700	1,900				
175		1,300	1,500				
180		1,100	1,200				
185							
190							
Telescoping mode		1, 2	1, 2	1, 2			

		COUNTERWEIGHT 24,700 lbs (11.2 t) ON OUTRIGGERS FULLY EXTENDED 23' 11-3/8" (7.3 m) SPREAD					
		SMART CHART			SMART CHART		
		151.7' (46.2 m) Boom + 33.2' (10.1 m) JIB			151.7' (46.2 m) Boom + 58.1' (17.7 m) JIB		
B		3.5° Offset	25° Offset	45° Offset	3.5° Offset	25° Offset	45° Offset
40		12,500	11,500				
45		12,500	11,500				
50		12,500	11,500				
55		12,500	11,500	12,500	11,500		
60		12,500	11,500	12,500	11,500	10,000	10,000
65		12,500	11,500	12,100	11,100	9,800	9,700
70		12,500	11,500	11,700	10,300	9,600	9,500
75		12,500	10,900	11,400	9,700	9,400	9,200
80		11,700	10,300	11,000	9,100	9,200	8,600
85		10,700	9,800	10,700	8,500	9,100	8,200
90		9,800	8,600	10,100	8,000	8,900	7,700
95		9,000	8,000	9,300	7,600	8,800	7,300
100		8,200	7,600	8,600	7,100	8,700	6,900
105		7,600	7,100	7,900	6,800	8,000	6,600
110		7,000	6,700	7,300	6,400	7,400	6,200
115		6,400	6,300	6,700	6,100	6,800	6,000
120		5,900	6,000	6,200	5,800	6,300	5,700
125		5,400	5,700	5,700	5,500	5,800	5,400
130		5,000	5,400	5,200	5,200	5,300	5,200
135		4,600	5,100	4,800	5,000	4,900	4,900
140		4,100	4,900	4,400	4,700		
145		3,600	4,500	3,900	4,500		
150		3,200	4,100	3,400	4,300		
155		2,700	3,600	3,000	3,900		
160		2,300	3,200	2,500	3,400		
165		2,000	2,900	2,100	3,000		
170		1,600	2,500				
175		1,300	2,200				
180							
185							
190							
Telescoping mode		1	2	1	2	1	2

		COUNTERWEIGHT 24,700 lbs (11.2 t) ON OUTRIGGERS FULLY EXTENDED 23' 11-3/8" (7.3 m) SPREAD					
		SMART CHART			SMART CHART		
		120.3' (36.7 m) Boom + 33.2' (10.1 m) JIB			120.3' (36.7 m) Boom + 58.1' (17.7 m) JIB		
B		3.5° Offset	25° Offset	45° Offset	3.5° Offset	25° Offset	45° Offset
30		14,600	14,600				
35		14,600	14,600				
40		14,600	14,600	14,400			
45		14,600	14,600	13,800	13,600		
50		14,600	14,600	13,200	13,000	10,400	10,400
55		14,600	14,600	12,700	12,500	10,200	10,100
60		14,600	14,400	12,200	12,000	9,900	9,800
65		14,600	13,400	11,800	11,600	9,700	9,600
70		14,600	12,600	11,400	11,200	9,500	9,400
75		13,900	12,400	11,000	10,800	9,300	9,200
80		12,800	11,700	10,700	10,500	9,200	9,100
85		11,700	11,000	10,400	10,200	9,000	8,900
90		10,800	10,300	10,100	9,900	8,900	8,800
95		10,000	9,800	9,900	9,700	8,800	8,700
100		9,200	9,300	9,400	9,200	8,700	8,600
105		8,500	8,800	8,700	8,700	8,600	8,500
110		7,900	8,300	8,100	8,300	8,200	8,300
115		7,000	7,900	7,500	7,900	7,600	7,900
120		6,300	7,500	6,700	7,500		
125		5,600	7,200	6,000	7,200		
130		4,900	6,900	5,200	6,800		
135		4,300	6,500	4,600	6,500		
140		3,800	6,000				
145		3,300	5,500				
150							
155							
160							
165							
170							
Telescoping mode		1	2	1	2	1	2

B: Load radius in feet

# GR-1000XLL-4 RATED LIFTING CAPACITIES (IN POUNDS)

		COUNTERWEIGHT 24,700lbs (11.2 t) ON OUTRIGGERS MIDDLE EXTENDED 21' 11-3/4" (6.7 m) SPREAD 360° ROTATION SMART COUNTERWEIGHT														
		A	42.0' (12.8 m)	57.7' (17.6 m)	73.3' (22.4 m)		89.0' (27.1 m)		104.7' (31.9 m)		120.3' (36.7 m)		136.0' (41.5 m)		151.7' (46.2 m)	
B																
8		200,000	99,600													
10		178,900	99,600	74,800	33,800											
12		156,600	99,600	74,800	33,800											
15		130,900	99,600	74,800	33,800	39,900	29,700									
20		100,900	99,600	74,200	33,800	39,900	29,700	33,800	27,700	30,000	27,600					
25		79,100	77,500	62,300	33,800	39,900	29,700	33,800	27,700	30,000	27,600	28,300	27,500			
30		55,000	53,900	52,500	33,800	39,900	29,700	33,800	27,700	30,000	27,600	28,300	26,100	26,400	24,100	
35			39,800	38,700	33,800	39,300	29,700	33,800	27,700	30,000	27,400	28,300	23,900	26,400	23,600	20,700
40			30,600	29,700	33,800	31,900	29,700	31,200	27,700	28,800	25,000	27,100	21,500	25,400	22,000	20,700
45			24,100	23,300	29,300	25,400	29,700	26,500	26,300	25,500	23,000	24,000	19,500	22,900	20,500	20,100
50			19,400	18,500	24,400	20,600	25,200	21,700	23,900	22,500	21,200	21,400	17,800	20,400	19,100	19,000
55				14,800	20,500	16,800	21,300	18,000	21,700	18,700	19,800	19,200	16,300	18,300	17,600	17,600
60				11,900	17,400	13,800	18,200	15,000	18,700	15,700	18,200	16,200	15,000	16,500	16,200	15,800
65				9,600	15,000	11,400	15,700	12,500	16,100	13,300	16,400	13,800	14,000	14,200	15,100	14,300
70						9,300	13,600	10,400	14,000	11,200	14,300	11,800	13,000	12,200	13,400	12,500
75						7,700	11,800	8,800	12,300	9,500	12,600	10,100	12,100	10,400	11,700	10,700
80						6,300	10,400	7,300	10,800	8,000	11,100	8,600	11,300	9,000	10,200	9,300
85								6,000	9,500	6,800	9,700	7,300	9,900	7,700	8,900	8,000
90								5,000	8,400	5,700	8,600	6,200	8,800	6,600	7,800	6,900
95								4,000	7,400	4,700	7,600	5,200	7,800	5,600	6,800	5,900
100										3,900	6,800	4,400	6,900	4,800	5,900	5,000
105										3,100	6,000	3,600	6,200	4,000	5,100	4,300
110										2,500	5,400	2,900	5,500	3,300	4,400	3,600
115												2,300	4,900	2,700	3,800	3,000
120												1,800	4,300	2,100	3,200	2,400
125												1,300	3,800	1,600	2,700	1,900
130														1,200	2,300	1,400
135															1,900	1,000
140															1,500	
Telescoping mode		1, 2	1	1	2	1	2	1	2	1	2	1	2	1	2	1, 2
2nd Boom		0	50	100	0	100	0	100	0	100	0	100	0	100	50	100
3rd Boom		0	0	0	33	16	50	33	66	50	83	66	100	83	100	100
4th Boom		0	0	0	33	16	50	33	66	50	83	66	100	83	100	100
Top Boom		0	0	0	33	16	50	33	66	50	83	66	100	83	100	100

A: Boom length in feet  
 B: Load radius in feet

NOTE: The lifting capacity data stored in the LOAD MOMENT INDICATOR (AML-E2) is based on the standard number of parts of line listed in the chart. Standard number of parts of line for each boom length should be according to the following table.

Boom length in feet (meters)	42.0' (12.8 m)	42.0' to 73.3' (12.8 m to 22.4 m)	73.3' to 167.3' (22.4 m to 51 m)	Single top jib
Telescoping mode	1, 2	1	2	1, 2
Number of parts of line	16	8	4	1

# GR-1000XLL-4 RATED LIFTING CAPACITIES (IN POUNDS)

SMART COUNTERWEIGHT		COUNTERWEIGHT 24,700 lbs (11.2 t) ON OUTRIGGERS MIDDLE EXTENDED 21' 11-3/4" (6.7 m) SPREAD 360° ROTATION					
		167.3' (51 m) Boom + 33.2' (10.1 m) JIB			167.3' (51 m) Boom + 58.1' (17.7 m) JIB		
B	3.5° Offset	25° Offset	45° Offset	B	3.5° Offset	25° Offset	45° Offset
45	10,400						
50	10,400						
55	10,400				6,700		
60	10,400				6,700		
65	10,400	10,400			6,700		
70	10,400	10,400			6,700		
75	10,400	10,200	9,400		6,700	6,200	
80	10,300	9,500	9,000		6,700	6,100	
85	9,000	9,000	8,500		6,700	5,900	
90	7,800	8,500	8,100		6,700	5,800	4,800
95	6,800	7,800	7,700		6,700	5,600	4,700
100	5,900	6,800	7,300		6,500	5,500	4,600
105	5,100	5,900	6,400		5,700	5,400	4,500
110	4,400	5,100	5,600		5,000	5,300	4,400
115	3,700	4,400	4,800		4,300	5,200	4,300
120	3,100	3,800	4,100		3,700	4,900	4,200
125	2,600	3,200	3,500		3,200	4,200	4,200
130	2,100	2,600	2,900		2,600	3,700	4,100
135	1,700	2,100	2,400		2,200	3,100	3,700
140	1,200	1,700	1,900		1,800	2,600	3,200
145		1,300	1,400		1,400	2,200	2,700
150			1,000		1,000	1,800	2,200
155						1,400	1,800
160						1,000	1,300
Telescoping mode	1, 2	1, 2	1, 2	Telescoping mode	1, 2	1, 2	1, 2


SMART COUNTERWEIGHT		COUNTERWEIGHT 24,700 lbs (11.2 t) ON OUTRIGGERS MIDDLE EXTENDED 21' 11-3/4" (6.7 m) SPREAD 360° ROTATION						
		151.7' (46.2 m) Boom + 33.2' (10.1 m) JIB			151.7' (46.2 m) Boom + 58.1' (17.7 m) JIB			
B	3.5° Offset	25° Offset	45° Offset	B	3.5° Offset	25° Offset	45° Offset	
40	12,500	11,500						
45	12,500	11,500						
50	12,500	11,500						
55	12,500	11,500	12,500	11,500	7,600	7,200		
60	12,500	11,500	12,500	11,500	7,600	7,200		
65	12,500	11,500	12,100	11,100	7,600	7,200		
70	12,500	11,500	11,700	10,300	7,600	7,200		
75	11,700	10,900	11,400	9,700	7,600	7,200	6,500	
80	10,200	10,300	11,000	9,100	7,600	7,200	6,300	
85	8,900	9,800	10,000	8,500	7,600	7,200	6,200	
90	7,700	8,600	8,700	8,000	7,600	7,200	6,100	
95	6,700	7,600	7,600	7,600	7,600	7,200	6,000	
100	5,800	6,700	6,600	7,100	7,600	7,200	5,900	
105	5,000	5,900	5,800	6,600	7,600	7,200	5,800	
110	4,300	5,200	5,000	5,800	7,600	7,200	5,700	
115	3,600	4,500	4,300	5,100	7,600	7,200	5,600	
120	3,000	3,900	3,600	4,500	7,600	7,200	5,500	
125	2,500	3,400	3,000	3,900	7,600	7,200	5,400	
130	2,000	2,900	2,500	3,400	7,600	7,200	5,300	
135	1,500	2,400	2,000	2,800	7,600	7,200	5,200	
140	1,100	2,000	1,500	2,400	7,600	7,200	5,100	
145		1,700	1,100	2,000	7,600	7,200	5,000	
150		1,300		1,600	7,600	7,200	4,900	
155				1,200	7,600	7,200	4,800	
160					7,300	7,000	4,700	
165					6,500	6,500	4,600	
170					5,700	6,100	4,500	
175					5,000	5,800	4,400	
180					4,300	5,300	4,400	
185					3,700	4,800	4,300	
190					3,200	4,400	4,200	
195					2,600	4,000	4,200	
200					2,200	3,600	4,100	
205					1,800	3,300	4,100	
210					1,400	3,000	4,000	
215					1,000	2,600	3,900	
220						2,200	3,800	
225						1,800	3,600	
230						1,400	3,400	
235						1,000	3,200	
240							2,800	
245							2,400	
250							2,000	
255							1,700	
260							1,300	
265							1,000	
270								
Telescoping mode	1	2	1	2	1	2	1	2

SMART COUNTERWEIGHT		COUNTERWEIGHT 24,700 lbs (11.2 t) ON OUTRIGGERS MIDDLE EXTENDED 21' 11-3/4" (6.7 m) SPREAD 360° ROTATION						
		120.3' (36.7 m) Boom + 33.2' (10.1 m) JIB			120.3' (36.7 m) Boom + 58.1' (17.7 m) JIB			
B	3.5° Offset	25° Offset	45° Offset	B	3.5° Offset	25° Offset	45° Offset	
30	14,600	14,600						
35	14,600	14,600						
40	14,600	14,600	14,400		9,900	8,700		
45	14,600	14,600	13,800	13,600	9,900	8,700		
50	14,600	14,600	13,200	13,000	9,900	8,700		
55	14,600	14,600	12,700	12,500	9,900	8,700		
60	14,600	14,400	12,200	12,000	9,900	8,700		
65	14,600	13,400	11,800	11,600	9,900	8,700		
70	13,200	12,600	11,400	11,200	9,100	8,700		
75	11,400	12,400	11,000	10,800	8,700	8,400	6,500	
80	9,900	11,700	10,700	10,500	8,700	8,000	6,300	
85	8,600	10,800	9,600	10,200	8,700	7,700	6,200	
90	7,400	9,700	8,300	9,900	8,700	7,400	6,000	
95	6,400	8,600	7,200	9,300	7,700	7,100	5,800	
100	5,500	7,700	6,200	8,300	7,400	7,000	5,600	
105	4,700	6,900	5,400	7,500	6,500	6,900	5,400	
110	4,000	6,200	4,600	6,700	5,700	6,600	5,200	
115	3,300	5,500	3,800	5,900	4,900	6,200	5,000	
120	2,700	4,900	3,200	5,300	4,300	5,500	4,800	
125	2,200	4,400	2,600	4,700	3,700	5,000	4,600	
130	1,700	3,900	2,000	4,100	3,100	4,600	4,400	
135	1,300	3,400	1,500	3,600	2,600	4,500	4,300	
140		3,000			2,200	4,400	4,200	
145		2,600			1,800	4,300	4,100	
150					1,400	4,200	4,000	
155					1,000	4,100	4,000	
160						4,000	4,000	
165						3,900	4,000	
170						3,800	4,000	
175						3,700	4,000	
180						3,600	4,000	
185						3,500	4,000	
190						3,400	4,000	
195						3,300	4,000	
200						3,200	4,000	
205						3,100	4,000	
210						3,000	4,000	
215						2,900	4,000	
220						2,800	4,000	
225						2,700	4,000	
230						2,600	4,000	
235						2,500	4,000	
240						2,400	4,000	
245						2,300	4,000	
250						2,200	4,000	
255						2,100	4,000	
260						2,000	4,000	
265						1,900	4,000	
270						1,800	4,000	
Telescoping mode	1	2	1	2	1	2	1	2

B: Load radius in feet



# GR-1000XLL-4 RATED LIFTING CAPACITIES (IN POUNDS)

		COUNTERWEIGHT 24,700lbs (11.2 t) ON OUTRIGGERS MIDDLE EXTENDED 18' 1/2" (5.5 m) SPREAD 360° ROTATION SMART COUNTERWEIGHT														
		A	42.0' (12.8 m)	57.7' (17.6 m)	73.3' (22.4 m)		89.0' (27.1 m)		104.7' (31.9 m)		120.3' (36.7 m)		136.0' (41.5 m)		151.7' (46.2 m)	
B																
8		195,600	99,600													
10		167,700	99,600	74,800	33,800											
12		145,800	99,600	74,800	33,800											
15		120,900	99,600	74,800	33,800	39,900	29,700									
20		89,500	87,800	74,200	33,800	39,900	29,700	33,800	27,700	30,000	27,600					
25		57,600	56,500	55,000	33,800	39,900	29,700	33,800	27,700	30,000	27,600	28,300	27,500			
30		40,900	39,900	38,700	33,800	39,900	29,700	33,800	27,700	30,000	27,600	28,300	26,100	26,400	24,100	
35			29,500	28,700	33,800	30,800	29,700	31,900	27,700	30,000	27,400	28,300	23,900	26,400	23,600	20,700
40			22,600	21,800	27,800	23,900	28,500	25,000	27,700	25,800	25,000	26,400	21,500	25,400	22,000	20,700
45			17,600	16,800	22,500	18,800	23,300	20,000	23,700	20,700	23,000	21,300	19,500	21,700	20,500	20,100
50			13,800	13,000	18,600	15,000	19,400	16,200	19,900	16,900	20,100	17,400	17,800	17,800	19,100	18,100
55				10,100	15,500	12,000	16,300	13,100	16,800	13,900	17,000	14,400	16,300	14,800	16,100	15,100
60				7,800	13,100	9,600	13,800	10,700	14,200	11,500	14,600	12,000	14,700	12,400	13,600	12,700
65				5,900	11,100	7,600	11,800	8,700	12,200	9,500	12,500	10,000	12,700	10,400	11,600	10,700
70						6,000	10,100	7,000	10,500	7,800	10,800	8,400	11,000	8,800	9,900	9,000
75						4,600	8,600	5,600	9,100	6,400	9,300	6,900	9,500	7,400	8,500	7,600
80						3,400	7,500	4,400	7,800	5,200	8,100	5,700	8,300	6,100	7,300	6,400
85								3,400	6,800	4,100	7,000	4,700	7,200	5,000	6,200	5,400
90								2,500	5,900	3,200	6,100	3,700	6,300	4,100	5,300	4,400
95								1,700	5,100	2,400	5,300	2,900	5,400	3,300	4,500	3,600
100										1,700	4,600	2,200	4,700	2,600	3,700	2,900
105										1,100	3,900	1,600	4,100	1,900	3,100	2,200
110											3,400	1,000	3,500	1,400	2,500	
115													3,000		2,000	
120													2,500		1,500	
125													2,100		1,100	
Telescoping mode		1, 2	1	1	2	1	2	1	2	1	2	1	2	1	2	1, 2
2nd Boom		0	50	100	0	100	0	100	0	100	0	100	0	100	50	100
3rd Boom		0	0	0	33	16	50	33	66	50	83	66	100	83	100	100
4th Boom		0	0	0	33	16	50	33	66	50	83	66	100	83	100	100
Top Boom		0	0	0	33	16	50	33	66	50	83	66	100	83	100	100

A: Boom length in feet  
 B: Load radius in feet

NOTE: The lifting capacity data stored in the LOAD MOMENT INDICATOR (AML-E2) is based on the standard number of parts of line listed in the chart. Standard number of parts of line for each boom length should be according to the following table.

Boom length in feet (meters)	42.0' (12.8 m)	42.0' to 73.3' (12.8 m to 22.4 m)	73.3' to 167.3' (22.4 m to 51 m)	Single top jib
Telescoping mode	1, 2	1	2	1, 2
Number of parts of line	16	8	4	1

# GR-1000XLL-4 RATED LIFTING CAPACITIES (IN POUNDS)


SMART COUNTERWEIGHT		COUNTERWEIGHT 24,700 lbs (11.2 t) ON OUTRIGGERS MIDDLE EXTENDED 18' 1/2" (5.5 m) SPREAD 360° ROTATION					
		167.3' (51 m) Boom + 33.2' (10.1 m) JIB			167.3' (51 m) Boom + 58.1' (17.7 m) JIB		
B	3.5° Offset	25° Offset	45° Offset	B	3.5° Offset	25° Offset	45° Offset
45	10,400			45			
50	10,400			50			
55	10,400			55	6,700		
60	10,400	10,400		60	6,700		
65	10,400	10,400	9,800	65	6,700		
70	10,100	10,400	9,600	70	6,700		
75	8,700	9,900	9,400	75	6,700	6,200	
80	7,400	8,600	9,000	80	6,700	6,100	
85	6,300	7,400	8,100	85	6,700	5,900	
90	5,300	6,300	7,000	90	6,000	5,800	4,800
95	4,500	5,400	6,000	95	5,100	5,600	4,700
100	3,700	4,600	5,100	100	4,300	5,500	4,600
105	3,100	3,800	4,300	105	3,600	5,000	4,500
110	2,400	3,200	3,600	110	3,000	4,300	4,400
115	1,900	2,600	3,000	115	2,400	3,700	4,300
120	1,400	2,000	2,400	120	1,900	3,100	3,900
125		1,500	1,800	125		2,500	3,300
130			1,300	130		2,100	2,700
135				135		1,600	2,200
140				140			1,700
Telescoping mode	1, 2	1, 2	1, 2	Telescoping mode	1, 2	1, 2	1, 2

SMART COUNTERWEIGHT		COUNTERWEIGHT 24,700 lbs (11.2 t) ON OUTRIGGERS MIDDLE EXTENDED 18' 1/2" (5.5 m) SPREAD 360° ROTATION					
		151.7' (46.2 m) Boom + 33.2' (10.1 m) JIB			151.7' (46.2 m) Boom + 58.1' (17.7 m) JIB		
B	3.5° Offset	25° Offset	45° Offset	B	3.5° Offset	25° Offset	45° Offset
40	12,500	11,500		40			
45	12,500	11,500		45			
50	12,500	11,500		50	7,600	7,200	
55	12,500	11,500	12,500	55	7,600	7,200	
60	12,500	11,500	12,500	60	7,600	7,200	
65	11,800	11,500	12,100	65	7,600	7,200	
70	10,000	11,000	11,400	70	7,600	7,200	6,500
75	8,500	9,500	9,800	75	7,600	7,200	6,500
80	7,300	8,200	8,400	80	7,600	7,200	6,300
85	6,200	7,100	7,300	85	7,600	7,200	6,100
90	5,200	6,200	6,200	90	6,900	7,200	6,000
95	4,400	5,300	5,300	95	5,900	6,700	5,900
100	3,600	4,500	4,400	100	5,100	5,900	5,800
105	2,900	3,900	3,700	105	4,300	5,100	5,000
110	2,300	3,200	3,000	110	3,600	4,400	4,900
115	1,800	2,700	2,400	115	3,000	3,800	4,800
120	1,300	2,200	1,900	120	2,400	3,200	4,700
125		1,700	1,400	125	1,900	2,700	4,600
130		1,300	1,100	130	1,500	2,500	4,500
135			1,300	135		2,000	4,400
140				140		1,800	4,300
145				145		1,600	4,200
150				150		1,400	4,100
155				155		1,100	4,000
Telescoping mode	1	2	1	Telescoping mode	1	2	1

SMART COUNTERWEIGHT		COUNTERWEIGHT 24,700 lbs (11.2 t) ON OUTRIGGERS MIDDLE EXTENDED 18' 1/2" (5.5 m) SPREAD 360° ROTATION					
		120.3' (36.7 m) Boom + 33.2' (10.1 m) JIB			120.3' (36.7 m) Boom + 58.1' (17.7 m) JIB		
B	3.5° Offset	25° Offset	45° Offset	B	3.5° Offset	25° Offset	45° Offset
30	14,600	14,600		30			
35	14,600	14,600		35			
40	14,600	14,600	14,400	40	9,900	8,700	
45	14,600	14,600	13,800	45	9,900	8,700	
50	14,600	14,600	13,200	50	9,900	8,700	
55	14,600	14,600	12,700	55	9,900	8,700	
60	13,500	14,400	12,200	60	9,900	8,700	7,200
65	11,400	13,400	11,800	65	9,900	8,700	7,000
70	9,700	12,000	11,200	70	9,600	8,700	6,800
75	8,200	10,500	9,500	75	9,100	8,700	6,500
80	6,900	9,200	8,100	80	8,700	8,400	6,300
85	5,900	8,100	6,900	85	8,000	8,000	6,200
90	4,900	7,100	5,800	90	6,900	7,700	6,000
95	4,100	6,300	4,900	95	5,900	7,400	5,800
100	3,300	5,500	4,000	100	5,000	6,900	5,500
105	2,600	4,800	3,300	105	4,300	6,200	5,000
110	2,000	4,200	2,600	110	3,600	5,500	4,900
115	1,500	3,700	2,000	115	3,000	4,900	4,500
120	1,000	3,200	1,400	120	2,400	4,400	4,400
125		2,700	1,000	125	1,900	3,900	4,300
130		2,300	700	130	1,500	3,400	4,100
135		1,900	500	135	1,000	2,900	3,800
140		1,500	300	140		2,400	3,500
145		1,200	200	145		1,900	3,200
150			100	150		1,500	2,800
155				155		1,200	2,500
160				160		1,100	2,200
Telescoping mode	1	2	1	Telescoping mode	1	2	1

B: Load radius in feet

# GR-1000XLL-4 RATED LIFTING CAPACITIES (IN POUNDS)

		COUNTERWEIGHT 24,700lbs (11.2 t) ON OUTRIGGERS MINIMUM EXTENDED 8' 10-5/16" (2.7 m) SPREAD 360° ROTATION SMART COUNTERWEIGHT														
		A	42.0' (12.8 m)	57.7' (17.6 m)	73.3' (22.4 m)		89.0' (27.1 m)		104.7' (31.9 m)		120.3' (36.7 m)		136.0' (41.5 m)		151.7' (46.2 m)	
B																
12		85,700	84,100													
15		57,800	56,700													
20		34,900	34,200	33,200	33,800	35,400	29,700	33,800	27,700	30,000	27,600					
25		23,300	22,600	21,800	27,700	23,900	28,400	25,000	27,700	25,700	27,600	26,300	27,500			
30		16,300	15,500	14,700	20,400	16,800	21,200	17,900	21,600	18,700	21,800	19,200	22,000	19,500	20,900	
35			10,700	10,000	15,400	12,000	16,200	13,100	16,600	13,800	16,900	14,400	17,100	14,700	16,000	14,400
40			7,300	6,600	11,900	8,500	12,600	9,600	13,100	10,400	13,400	10,900	13,600	11,300	12,500	11,200
45			4,700	4,000	9,200	5,900	9,900	6,900	10,400	7,700	10,700	8,300	10,900	8,700	9,800	8,600
50			2,800		7,100	3,900	7,800	4,900	8,200	5,700	8,600	6,200	8,800	6,600	7,800	6,700
55					5,400	2,200	6,100	3,300	6,600	4,000	6,900	4,500	7,100	5,000	6,100	5,000
60					4,100		4,800		5,200		5,500		5,700		4,700	
65					3,000		3,600		4,100		4,300		4,500		3,600	
70							2,700		3,100		3,400		3,600			
75							1,900		2,200		2,500		2,700			
80							1,200		1,600		1,800		2,000			
Telescoping mode	1, 2	1	1	2	1	2	1	2	1	2	1	2	1	2	1, 2	1, 2
2nd Boom	0	50	100	0	100	0	100	0	100	0	100	0	100	50	100	100
3rd Boom	0	0	0	33	16	50	33	66	50	83	66	100	83	100	100	100
4th Boom	0	0	0	33	16	50	33	66	50	83	66	100	83	100	100	100
Top Boom	0	0	0	33	16	50	33	66	50	83	66	100	83	100	100	100

A: Boom length in feet  
 B: Load radius in feet

NOTE: The lifting capacity data stored in the LOAD MOMENT INDICATOR (AML-E2) is based on the standard number of parts of line listed in the chart. Standard number of parts of line for each boom length should be according to the following table.

Boom length in feet (meters)	42.0' (12.8 m)	42.0' to 73.3' (12.8 m to 22.4 m)	73.3' to 167.3' (22.4 m to 51 m)	Single top jib
Telescoping mode	1, 2	1	2	1, 2
Number of parts of line	16	8	4	1

# WARNING AND OPERATING INSTRUCTIONS FOR LIFTING CAPACITIES

## GENERAL

1. RATED LIFTING CAPACITIES apply only to the machine as originally manufactured and normally equipped by TADANO LTD. Modifications to the machine or use of optional equipment other than that specified can result in a reduction of capacity.
2. Hydraulic cranes can be hazardous if improperly operated or maintained. Operation and maintenance of this machine must be in compliance with information, in the Operation and Maintenance Manual supplied with the crane. If this manual is missing, order a replacement through the distributor.
3. The operator and other personnel associated with this machine shall fully acquaint themselves with the latest American National Standards Institute (ANSI) safety standards for cranes.

## SET UP

1. Rated lifting capacities on the chart are the maximum allowable crane capacities and are based on the machine standing level on firm supporting surface under ideal job conditions. Depending on the nature of the supporting surface, it may be necessary to have structural supports under the outrigger floats or tires to spread the loads to a larger bearing surface.
2. For outrigger operation, outriggers shall be properly extended with tires free of supporting surface before operating crane.

## OPERATION

1. Rated lifting capacities have been tested to and meet minimum requirements of SAE J1063-Cantilevered Boom Crane Structures Method of Test.  
Rated lifting capacities do not exceed 85% of the tipping load on outriggers fully extended as determined by SAE J765-Crane Stability Test Code.
2. Rated lifting capacities for partially extended outriggers are determined from the formula, Rated Lifting Capacities = (Tipping Load -  $0.1 \times$  Tip Reaction) / 1.25.
3. Rated lifting capacities are based on actual load radius increased by boom deflection.
4. The weight of handling device such as hook blocks, slings, etc., must be considered as part of the load and must be deducted from the lifting capacities.
5. Rated lifting capacities are based on freely suspended loads and make no allowance for such factors as the effect of wind, sudden stopping of loads, supporting surface conditions, inflation of tires, operating speeds, side loads, etc. Side pull on boom or jib is extremely dangerous.  
Such action can damage the boom, jib or slewing mechanism, and lead to overturning of the crane.
6. Rated lifting capacities do not account for wind on lifted load or boom. We recommend against working under the condition that the load is out of control due to a strong wind. During boom lift, consider that the rated lifting capacity is reduced by 50% when the wind speed is 20 mph (9 m/s) to 27 mph (12 m/s); reduced by 70% when the wind speed is 27 mph (12 m/s) to 31 mph (14 m/s). If the wind speed is 31 mph (14 m/s) or over, stop operation. During jib lift, stop operation if the wind speed is 20 mph (9 m/s) or over.
7. Rated lifting capacities at load radius shall not be exceeded. Do not tip the crane to determine allowable loads.
8. Do not operate at boom lengths, radii, or boom angle, where no capacities are shown. Crane may overturn without any load on the hook.
9. When boom length is between values listed, refer to the rated lifting capacities of the next longer and next shorter booms for the same radius. The lesser of the two rated lifting capacities shall be used.
10. When making lifts at a load radius not shown, use the next longer radius to determine allowable capacity.
11. Load per line should not exceed 14,600 lbs. (6,600 kg) for main winch and auxiliary winch.
12. Check the actual number of parts of line with LOAD MOMENT INDICATOR (AML-E2) before operation. Maximum lifting capacity is restricted by the number of parts of line of LOAD MOMENT INDICATOR (AML-E2). Limited capacity is as determined from the formula, Single line pull for main winch 14,600 lbs. (6,600 kg)  $\times$  number of parts of line.

13. The boom angle before loading should be greater to account for deflection. For rated lifting capacities, the loaded boom angle and the load radius is for reference only.
14. The 42.0' (12.8 m) boom length capacities are based on boom fully retracted. If not fully retracted [less than 57.7' (17.6 m) boom length], use the rated lifting capacities for the 57.7' (17.6 m) boom length.
15. Extension or retraction of the boom with loads may be attempted within the limits of the RATED LIFTING CAPACITIES.  
The ability to telescope loads is limited by hydraulic pressure, boom angle, boom length, crane maintenance, etc.  
For lifting capacity of single top, deduct the weight of the load handling equipment from the rated lifting capacity of the boom.
16. For the lifting capacity of single top, the net capacity shall not exceed 14,600 lbs. (6,600 kg) including the main boom hook mass attached to the boom.
17. When the base jib or top jib or both jibs are removed, set the jib state switch to the REMOVED position.
18. When erecting and stowing jib, be sure to retain it by hand or by other means to prevent its free movement.
19. Use "ANTI-TWOBLOCK" disable switch when erecting and stowing jib and when stowing hook block. While the switch is pushed, the hoist does not stop, even when overwind condition occurs.
20. When lifting a load by using jib (aux. winch) and boom (main winch) simultaneously, do the following:
  - Enter the operation status as jib operation, not as boom operation.
  - Before starting operation, make sure that mass of load is within rated lifting capacity for jib.
21. Before telescoping the boom, set the telescoping mode selector switch to mode 1 or mode 2 fully retracted.  
A change of the telescoping mode is not permissible when the boom has been partially or fully extended.
22. Crane operation is prohibited without full counterweight 24,700 lbs. (11.2 ton) installed. Outriggers shall be extended 23' 11-3 / 8" (7.3 m) spread when installing or removing removable counterweight.

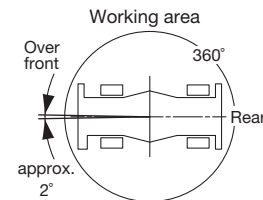
## DEFINITIONS

1. Load Radius: Horizontal distance from a projection of the axis of rotation to supporting surface before loading to the center of the vertical hoist line or tackle with load applied.
2. Loaded Boom Angle: The angle between the boom base section and the horizontal, after lifting the rated lifting capacity at the load radius.
3. Working Area: Area measured in a circular arc about the centerline of rotation.
4. Freely Suspended Load: Load hanging free with no direct external force applied except by the hoist line.
5. Side Load: Horizontal side force applied to the lifted load either on the ground or in the air.

# GR-1000XLL-4 RATED LIFTING CAPACITIES (IN POUNDS)

COUNTERWEIGHT 24,700lbs (11.2 t) ON RUBBER STATIONARY									
Over front					360° Rotation				
B \ A	42.0' (12.8 m)	73.3' (22.4 m)	89.0' (27.1 m)	104.7' (31.9 m)	B \ A	42.0' (12.8 m)	73.3' (22.4 m)	89.0' (27.1 m)	104.7' (31.9 m)
12	65,000				12	43,000			
15	53,700				15	32,600			
20	40,400	33,800	29,700		20	19,400	22,900	22,900	
25	31,400	33,800	29,700	27,700	25	12,500	15,700	16,400	16,800
30	24,200	27,300	27,800	27,700	30	8,100	11,200	11,800	12,200
35		21,200	21,700	22,000	35		8,100	8,700	9,100
40		16,800	17,400	17,800	40		5,800	6,400	6,800
45		13,600	14,200	14,500	45		4,100	4,700	5,100
50		11,100	11,600	12,000	50		2,800	3,400	3,700
55		9,100	9,700	10,000	55		1,700	2,300	2,600
60		7,500	8,000	8,400	60				
65		6,200	6,700	7,100	65				
70			5,600	5,900	70				
75			4,700	5,000	75				
80			3,900	4,200	80				
85				3,400	85				
90				2,800	90				
95				2,300	95				
Telescoping mode	1, 2	2	2	2	Telescoping mode	1, 2	2	2	2
2nd Boom	0	0	0	0	2nd Boom	0	0	0	0
3rd Boom	0	33	50	66	3rd Boom	0	33	50	66
4th Boom	0	33	50	66	4th Boom	0	33	50	66
Top Boom	0	33	50	66	Top Boom	0	33	50	66

COUNTERWEIGHT 24,700lbs (11.2 t) ON RUBBER CREEP				
Over front				
B \ A	42.0' (12.8 m)	73.3' (22.4 m)	89.0' (27.1 m)	104.7' (31.9 m)
12	50,600			
15	41,400			
20	30,400	33,300	29,700	
25	23,200	26,100	26,700	27,000
30	17,900	20,900	21,500	21,900
35		17,000	17,600	17,900
40		13,900	14,500	14,900
45		11,400	12,000	12,400
50		9,400	10,000	10,400
55		7,700	8,300	8,700
60		6,300	6,900	7,300
65		5,100	5,700	6,100
70			4,700	5,000
75			3,800	4,100
80			3,000	3,300
85				2,600
90				2,000
95				1,500
Telescoping mode	1, 2	2	2	2
2nd Boom	0	0	0	0
3rd Boom	0	33	50	66
4th Boom	0	33	50	66
Top Boom	0	33	50	66



A: Boom length in feet  
B: Load radius in feet

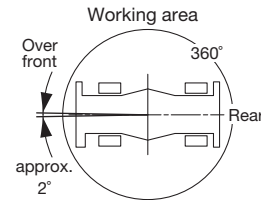
NOTE: The lifting capacity data stored in the LOAD MOMENT INDICATOR (AML-E2) is based on the standard number of parts of line listed in the chart. Standard number of parts of line for on-rubber operation should be according to the chart.

Boom length in feet (meters)	42.0' (12.8 m)	42.0' to 104.7' (12.8 m to 31.9 m)	Single top jib
Number of parts of line	6	4	1

# GR-1000XLL-4 RATED LIFTING CAPACITIES (IN POUNDS)

		COUNTERWEIGHT 24,700lbs (11.2 t) ON RUBBER STATIONARY SMART COUNTERWEIGHT				360° Rotation					
		Over front									
B \ A	A	42.0' (12.8 m)	73.3' (22.4 m)	89.0' (27.1 m)	104.7' (31.9 m)	B	A	42.0' (12.8 m)	73.3' (22.4 m)	89.0' (27.1 m)	104.7' (31.9 m)
12		67,600				12					
15		56,000				15					
20		42,300	33,800	29,700		20		21,800			
25		33,000	33,800	29,700	27,700	25		14,200	17,500		
30		25,900	29,000	29,400	27,700	30		9,500	12,600	13,200	13,200
35			22,600	23,000	23,300	35			9,300	9,900	10,300
40			18,000	18,600	18,800	40			6,900	7,500	7,900
45			14,600	15,200	15,500	45			5,000	5,600	6,000
50			12,000	12,500	12,900	50			3,600	4,200	4,600
55			9,900	10,500	10,800	55			2,500	3,000	3,400
60			8,200	8,800	9,100	60			1,500	2,100	2,400
65			6,900	7,400	7,700	65				1,300	
70				6,200	6,500	70					
75				5,200	5,600	75					
80				4,400	4,700	80					
85					3,900	85					
90					3,300	90					
95					2,800	95					
Telescoping mode	1, 2	2	2	2	2	Telescoping mode	1, 2	2	2	2	2
2nd Boom	0	0	0	0	0	2nd Boom	0	0	0	0	0
3rd Boom	0	33	50	66	66	3rd Boom	0	33	50	66	66
4th Boom	0	33	50	66	66	4th Boom	0	33	50	66	66
Top Boom	0	33	50	66	66	Top Boom	0	33	50	66	66

		COUNTERWEIGHT 24,700lbs (11.2 t) ON RUBBER CREEP SMART COUNTERWEIGHT			
		Over front			
B \ A	A	42.0' (12.8 m)	73.3' (22.4 m)	89.0' (27.1 m)	104.7' (31.9 m)
12		53,300			
15		43,600			
20		32,300	33,800	29,700	
25		24,800	27,600	28,200	27,700
30		19,300	22,300	22,900	23,200
35			18,100	18,700	19,100
40			14,900	15,500	15,900
45			12,300	12,900	13,300
50			10,200	10,800	11,200
55			8,500	9,100	9,500
60			7,000	7,600	8,000
65			5,800	6,400	6,800
70				5,300	5,700
75				4,400	4,700
80				3,600	3,900
85					3,200
90					2,500
95					2,000
Telescoping mode	1, 2	2	2	2	2
2nd Boom	0	0	0	0	0
3rd Boom	0	33	50	66	66
4th Boom	0	33	50	66	66
Top Boom	0	33	50	66	66



A: Boom length in feet  
B: Load radius in feet

NOTE: The lifting capacity data stored in the LOAD MOMENT INDICATOR (AML-E2) is based on the standard number of parts of line listed in the chart. Standard number of parts of line for on-rubber operation should be according to the chart.

Boom length in feet (meters)	42.0' (12.8 m)	42.0' to 104.7' (12.8 m to 31.9 m)	Single top jib
Number of parts of line	6	4	1



# WARNING AND OPERATING INSTRUCTIONS FOR ON RUBBER LIFTING CAPACITIES

- Rated lifting capacities on-rubber are in pounds and do not exceed 75% of tipping loads as determined by SAE J765-Crane Stability Test Code.
- Rated lifting capacities shown in the chart are based on condition that crane is set on firm level surfaces with suspension-lock applied. They are based on actual load radius increased by tire deformation and boom deflection.
- If the suspension-lock cylinders contain air, the axle will not be locked completely and rated lifting capacities may not be obtainable. Bleed the cylinders according to the operation safety and maintenance manual.
- Rated lifting capacities are based on proper tire inflation, capacity and condition. Damaged tires are hazardous to safe operation of crane.
- Tires shall be inflated to correct air pressure.
- Over front operation shall be performed within 2 degrees in front of chassis.
- On-rubber lifting with "jib" is not permitted. Maximum permissible boom length is 104.7 ft. (31.9 m).
- When making lift on-rubber stationary, set parking brake.
- For creep operation, boom must be centered over front of machine, slewing lock engaged, and load restrained from slewing. Travel slowly and keep the lifted load as close to the ground as possible, and especially avoid any abrupt steering, accelerating or braking.
- Do not operate the crane while carrying the load.
- Creep is motion for crane not to travel more than 200 ft. (60 m) in any 30 minute period and to travel at the speed of less than 1 mph (1.6 km/h).
- For creep operation, choose the drive mode and proper gear according to the road or working condition.

Tires	Air Pressure
29.5-25 36PR	68 psi. (470 kPa)
29.5-25 40PR	67 psi. (465 kPa)

## NOTES FOR LOAD MOMENT INDICATOR (AML-E2)

- Set AML select keys in accordance with the actually operating crane conditions and don't fail to make sure, before crane operation, that the displays on front panel are correct.
- When operating crane on outriggers:
  - Set "P.T.O." switch to "ON".
  - Press the outrigger state select key to register for the outrigger operation. If the display agrees with the actual state, press the set key to register. After the completion of the registration, the display returns to the crane operation status.
  - Press the lift state select key to register the lift state to be used (single top/jib/boom).
  - Each time the lift state select key is pressed, the display changes. If the display agrees with the actual state, press the set key to register. After the completion of the registration, the display returns to the crane operation status.
  - When erecting and stowing jib, select the status of jib set (Jib state indicative symbol lights up).
- When operating crane on-rubber:
  - Set "P.T.O." switch to "ON".
  - Press the outrigger state select key to register for the on-rubber operation. Each time the outrigger state select key is pressed, the display changes. Select the creep operation, the on-rubber state indicator symbol lights up.
  - Press the lift state select key to register the lift state. However, pay attention to the following.
    - For stationary operation.
      - The front capacities are attainable only when the over front position symbol comes on.
      - When the boom is more than 2 degrees from centered over front of chassis, 360° capacities are in effect.
      - When a load is lifted in the front position and then slewed to the side area, make sure the value of the LOAD MOMENT INDICATOR (AML-E2) is below the 360° lifting capacity.
    - For creep operation.
      - The creep capacities are attainable only when boom is in the straight forward position of chassis and the over front position symbol is on. If boom is not in the straight forward position of chassis, never lift load.
- This machine is equipped with an automatic slewing stopping device. (For the details, see Operation and Maintenance Manual.) But, operate very carefully because the automatic slewing stop does not work in the following cases.
  - During on-rubber operation.
  - When the "P.T.O." switch is set to "OVERRIDE" and the "OVERRIDE" key switch outside the cab is on.
- During crane operation, make sure that the displays on front panel are in accordance with actual operating conditions.
- The displayed values of LOAD MOMENT INDICATOR (AML-E2) are based on freely suspended loads and make no allowance for such factors as the effect of wind, sudden stopping of loads, supporting surface conditions, inflation of tire, operating speed, side loads, etc.  
For safe operation, it is recommended when extending and lowering boom or slewing, lifting loads shall be appropriately reduced.
- LOAD MOMENT INDICATOR (AML-E2) is intended as an aid to the operator. Under no condition should it be relied upon to replace use of capacity charts and operating instruction. Sole reliance upon LOAD MOMENT INDICATOR (AML-E2) aids in place of good operating practice can cause an accident. The operator must exercise caution to assure safety.
- The lifting capacity differs depending on the outrigger extension width and slewing position.  
Work with the capacity corresponding to the outrigger extension width and slewing position.  
For the relationship among the outrigger extension width, slewing position and lifting capacities, refer to the working area charts.

## GR-1000XLL-4 Axle Weight distribution chart

	Pounds			Kilograms		
	GVW	Front	Rear	GVW	Front	Rear
Base machine	123,500	61,600	61,900	56,040	27,940	28,100
Remove:						
1. 7.3 ton (6.6 metric ton) hook block	-400	-600	200	-165	-251	86
2. 100 ton (90.7 metric ton) hook block	-1,900	-3,500	1,600	-850	-1,571	721
3. Top jib	-800	-1,200	400	-336	-534	198
4. Base jib	-2,000	-4,200	2,200	-867	-1,886	1,019
5. Removable Counterweight	-24,700	9,500	-34,200	-11,200	4,296	-15,496







**TADANO AMERICA CORPORATION**

4242 West Greens Road.  
Houston, Texas, 77066 U.S.A.  
PHONE: (281) 869-0030  
FAX: (281) 869-0040  
<http://www.tadanoamerica.com>

---

Form No. GR-1000-4-00102/US-01