

# BT-200

Maximum deck bottom depth :  
**5.4 m**

Maximum deck bottom height :  
**7.0 m**

Maximum working radius :  
**5.1 m**

Maximum deck loading capacity :  
**200 kg**

2-section boom length :  
**3.06 m - 5.11 m**

5-section post boom length :  
**3.325 m - 9.825 m**

3-section deck boom length :  
**3.5 m - 8.21 m**



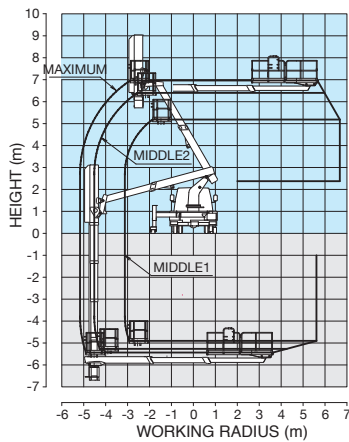
## MODEL : BT-200

### SPECIFICATIONS

|                             |   |
|-----------------------------|---|
| <b>DECK</b>                 |   |
| Outside dimensions          | 3.0 m x 0.85 m x 0.9 m (Length x width x depth)   |
| Capacity                    | 200 kg  |
| Automatic leveling system   | By a double-acting hydraulic cylinder.  |
| Maximum deck bottom depth   | 5.4 m   |
| Maximum deck bottom height  | 7.0 m   |
| Maximum working radius      | 5.1 m   |
| <b>BOOM</b>                 |   |
|                             | Two-section full power telescoping boom of box construction. Telescopic system consists of a double-acting hydraulic cylinder. Hydraulic cylinder fitted with a holding valve and a pilot check valve.  |
| Boom length                 | 3.06 m – 5.11 m   |
| Slewing system              | Hydraulic motor driven through worm reduction gear.   |
| Slewing angle               | 115° (Left 105°, Right 10°)   |
| Elevation system            | By a double-acting hydraulic cylinder, fitted with a holding valve.   |
| Elevation angle             | -15° – 60°  |
| <b>POST</b>                 |   |
| Boom length                 | Five-section full power telescoping boom by 2 of three stages hydraulic cylinders.<br>3.325 m – 9.825 m   |
| <b>DECK BOOM</b>            |   |
|                             | Three-section full power synchronized telescoping boom of box construction. The synchronization system consists of a double-acting hydraulic cylinder, an extension cable and a retraction cable. Hydraulic cylinder fitted with a holding valve and a pilot check valve. |
| Boom length                 | 3.5 m – 8.21 m  |
| Slewing system              | Hydraulic motor driven.   |
| Slewing angle               | 90°   |
| <b>HYDRAULIC SYSTEM</b>     |   |
| Pumps                       | Gear pump   |
| Control valves              | Multiple hydraulic-control valves actuated by switch with integral relief valves.<br>And electric remote control from deck.   |
| Hydraulic oil tank capacity | Approx. 95 L  |
| Filter                      | Return line filter  |
| <b>OUTRIGGERS</b>           |   |
|                             | Four hydraulically operated outriggers equipped with solid Rubber tires. Each outrigger controlled simultaneously or independently from rear side of carrier.   |
| Maximum extension width     | Front 2.74 m, Rear 2.81 m   |

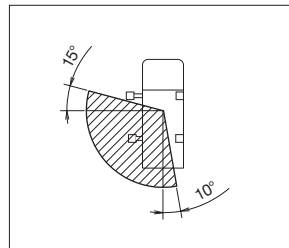
|                              |  |
|------------------------------|--|
| <b>CONTROLS AND MONITORS</b> |  |
| In deck                      | Levers for boom telescoping, boom elevation/rotation, post telescoping.<br>Switches for deck boom telescoping, deck boom rotation, emergency stop-release, automatic stow, acceleration change-over, emergency pump start, engine start, inter-phone volume control, inter-phone, emergency switch (operate a deck boom telescoping and slewing).<br>Monitor lamps for limit of automatic motion controller (AMC), stow position, emergency stop.  |
| On rotating frame            | Switches for boom telescoping, boom elevation, boom rotation, post telescoping, deck boom telescoping, deck boom rotation, emergency stop-release, automatic stow, acceleration change-over, emergency pump start, engine start, level adjustment, emergency switch (operate entire functions).<br>Monitor lamps for limit of automatic motion controller (AMC), AWL 90%, AWL 100%, AMC error, stow position, emergency stop.<br>Display for boom length, boom elevation angle, boom rotation angle, deck boom length, deck boom rotation angle, outrigger extension width.  |
| Outriggers control           | Levers for extension-retraction and outrigger selection.<br>Monitor lamps for outrigger extension width, vehicle tipping warning.  |
| Truck cab                    | Switches for inter-phone.<br>Monitor lamps for jack deploy, working prohibition.   |
| <b>SAFETY DEVICES</b>        | <ul style="list-style-type: none"> <li>•AMC (automatic motion control : working range limiter)</li> <li>•Boom and deck automatic stowing</li> <li>•Automatic speed reduction and slow stop function.</li> <li>•Automatic speed control system.</li> <li>•Boom lower surface profile function (not to hit)</li> <li>•Voice alarm</li> <li>•Foot switch (on deck, on rotating frame)</li> <li>•Guard for operation levers</li> <li>•Emergency pump</li> <li>•Emergency stop system</li> <li>•Jack interlock</li> <li>•Outrigger slider-interlock</li> <li>•Boom interlock</li> <li>•Slider lock pins</li> <li>•Outrigger indicator</li> <li>•Vehicle tipping warning</li> <li>•Hydraulic safety valves</li> <li>•Hydraulic cylinder lock valves</li> </ul> |
| <b>ACCESSORIES</b>           | •Hour meter •Chocks  |
| <b>OPTIONAL EQUIPMENT</b>    | •Work light (on deck) •Jack roller choke (float) •Marker lamps<br>•Safety belt •Grease pump •Tools   |

### WORKING RANGE

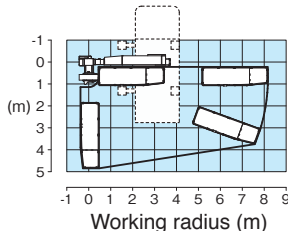


### BOOM ROTATION AREA

(The slanting line indicates working area)



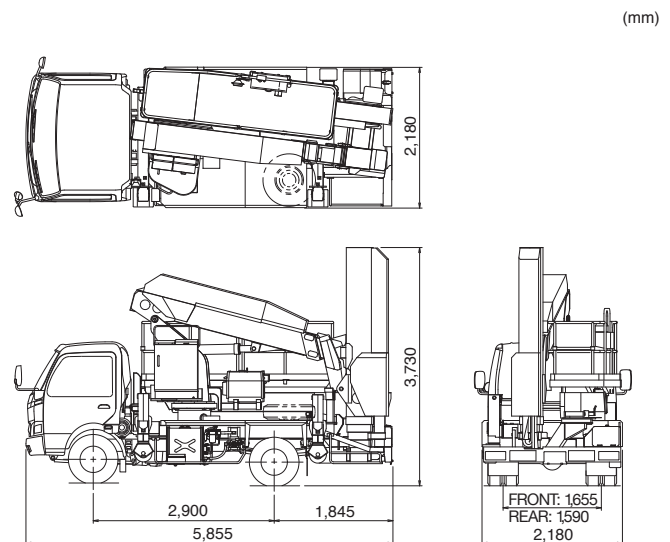
### DECK WORKING AREA



#### NOTES:

- Working ranges shown are for a case where the bridge inspection device is set on firm, level ground, and do not include boom deflection.
- "MAXIMUM", "MIDDLE2" and "MIDDLE1" indicates the corresponding outrigger extension widths.

### DIMENSION



- This is for reference chassis, subject to change specification without notice.
- Continuing technical development requires Tadano to retain the right to make specifications, equipment and price changes without notice.

\*Some specifications are subject to change



**TADANO LTD.** (International Division)

4-12, Kamezawa 2-chome, Sumida-ku Tokyo 130-0014, Japan

Phone: 81-3-3621-7750 Fax: 81-3-3621-7785

http://www.tadano.com/ E-mail: info@tadano.com

BT-200-2014-03-1 Printed in Japan

Courtesy of CraneMarket.com