

LS-218RH CRANE CAPACITIES:

(in metric tons)

| Working radius (m) | Boom length (m) | | | | | | | | | | | | | | |
|--------------------------|-----------------|-------|-------|-------|-------|-------|-------|-------|-------|-------|-------|-------|-------|-------|-------|
| | 12.20 | 15.25 | 18.30 | 21.35 | 24.40 | 27.45 | 30.50 | 33.55 | 36.60 | 39.65 | 42.70 | 45.75 | 48.80 | 51.85 | 54.90 |
| 3.7 | 80.0 | | | | | | | | | | | | | | |
| 4.0 | 72.8 | | | | | | | | | | | | | | |
| 4.5 | 62.0 | 61.9 | | | | | | | | | | | | | |
| 5.0 | 54.5 | 54.4 | 51.5 | | | | | | | | | | | | |
| 6.0 | 40.9 | 40.8 | 40.7 | 40.2 | 38.2 | | | | | | | | | | |
| 7.0 | 32.6 | 32.5 | 32.4 | 32.3 | 32.2 | 31.3 | | | | | | | | | |
| 8.0 | 26.9 | 26.8 | 26.7 | 26.6 | 26.5 | 26.4 | 26.0 | 25.5 | | | | | | | |
| 9.0 | 22.9 | 22.8 | 22.7 | 22.6 | 22.5 | 22.5 | 22.4 | 22.1 | 21.7 | 21.2 | | | | | |
| 10.0 | 19.9 | 19.8 | 19.7 | 19.6 | 19.5 | 19.5 | 19.4 | 19.3 | 19.2 | 18.8 | 18.3 | 17.3 | | | |
| 11.0 | 17.6 | 17.5 | 17.4 | 17.3 | 17.2 | 17.1 | 17.1 | 17.0 | 16.9 | 16.8 | 16.4 | 16.0 | 15.0 | 13.2 | |
| 12.0 | 15.7 | 15.6 | 15.5 | 15.4 | 15.3 | 15.3 | 15.2 | 15.1 | 15.0 | 15.0 | 14.8 | 14.5 | 14.0 | 13.1 | 12.2 |
| 14.0 | | 12.7 | 12.6 | 12.5 | 12.4 | 12.4 | 12.3 | 12.2 | 12.1 | 12.0 | 11.9 | 11.9 | 11.7 | 11.5 | 11.2 |
| 16.0 | | | 10.6 | 10.5 | 10.4 | 10.3 | 10.3 | 10.2 | 10.1 | 10.0 | 10.0 | 9.9 | 9.8 | 9.7 | |
| 18.0 | | | 9.1 | 9.0 | 8.9 | 8.9 | 8.8 | 8.7 | 8.6 | 8.5 | 8.5 | 8.4 | 8.3 | 8.2 | 8.1 |
| 20.0 | | | | 7.9 | 7.8 | 7.7 | 7.6 | 7.5 | 7.4 | 7.3 | 7.3 | 7.2 | 7.1 | 7.0 | 6.9 |
| 22.0 | | | | | 6.8 | 6.7 | 6.7 | 6.6 | 6.5 | 6.4 | 6.3 | 6.2 | 6.1 | 6.0 | 5.9 |
| 24.0 | | | | | | 6.0 | 5.9 | 5.8 | 5.7 | 5.6 | 5.5 | 5.4 | 5.3 | 5.2 | 5.1 |
| 26.0 | | | | | | | 5.2 | 5.1 | 5.0 | 4.9 | 4.8 | 4.7 | 4.6 | 4.5 | 4.4 |
| 28.0 | | | | | | | 4.6 | 4.5 | 4.4 | 4.3 | 4.2 | 4.1 | 4.0 | 3.9 | 3.8 |
| 30.0 | | | | | | | | 4.0 | 3.9 | 3.8 | 3.7 | 3.6 | 3.5 | 3.4 | 3.3 |
| 32.0 | | | | | | | | | 3.4 | 3.3 | 3.2 | 3.1 | 3.0 | 2.9 | 2.8 |
| 34.0 | | | | | | | | | | 2.9 | 2.8 | 2.6 | 2.5 | 2.4 | 2.3 |
| 36.0 | | | | | | | | | | 2.5 | 2.4 | 2.3 | 2.2 | 2.1 | 1.9 |
| 38.0 | | | | | | | | | | | 2.0 | 1.9 | 1.8 | 1.7 | 1.6 |

Notes:

- Capacities shown are in metric tons and are based on NEN2022 – with machine standing level on firm supporting surface under ideal job conditions. Deductions from the lifting crane capacities must be made for weight of hook block.

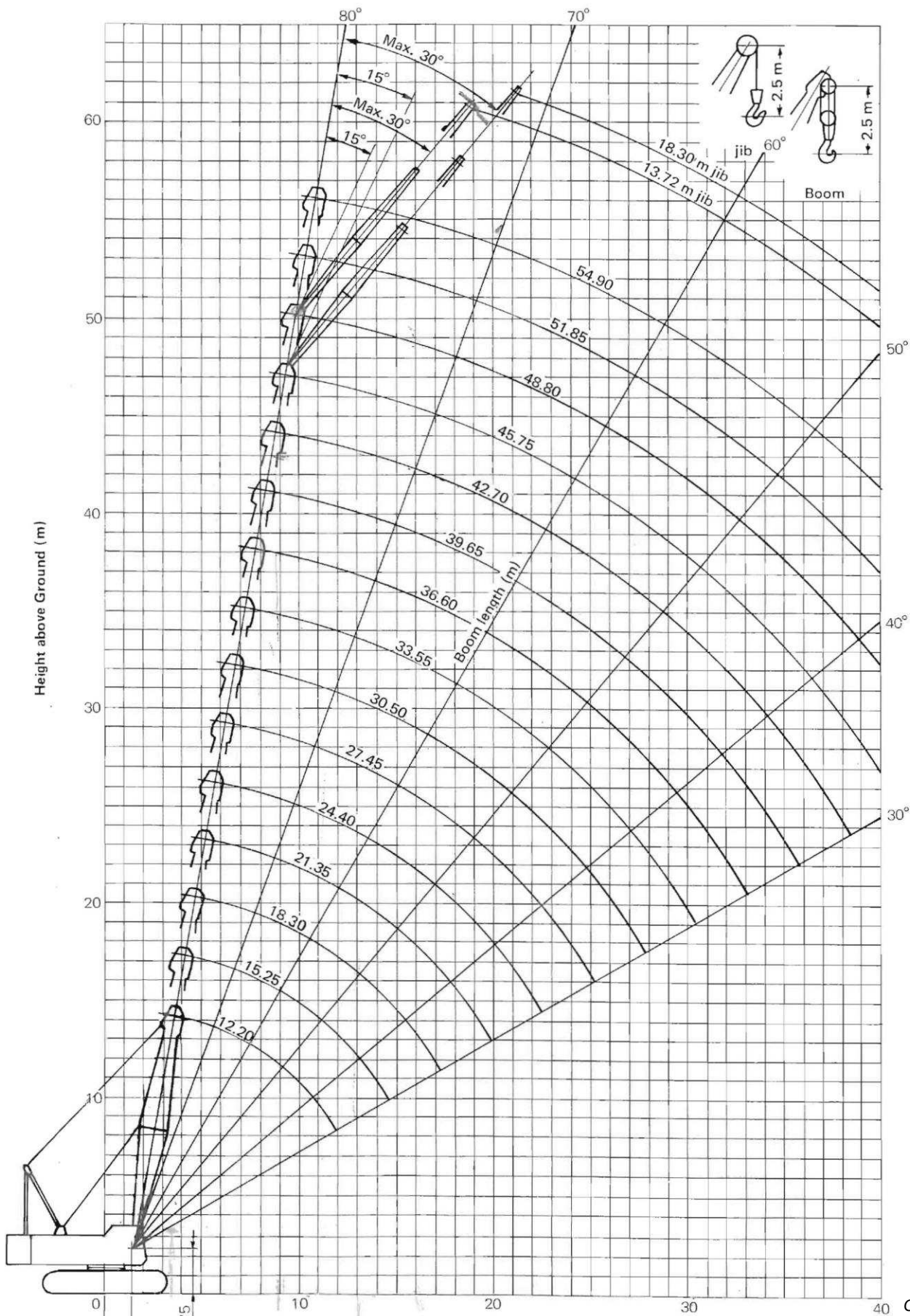
| | | |
|--------------------------|-----|-----|
| Kind of hook block | 80t | 25t |
| Weight of hook block (t) | 1.1 | 0.7 |

- Side frames must be extended for all operating conditions.

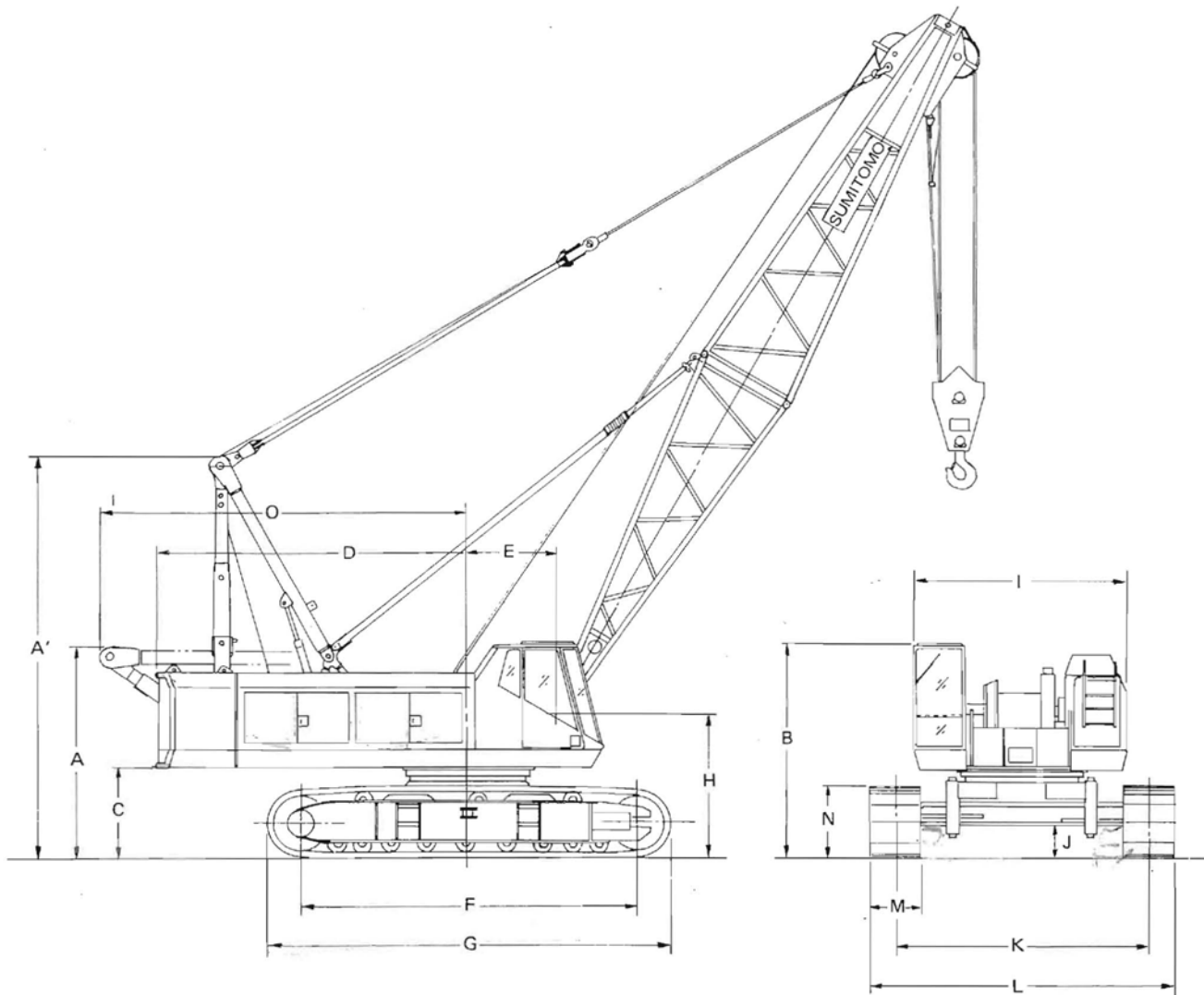
Crane 80 metric tons



LS-218RH CRANE WORKING RANGES:



LS-218RH
DIMENSIONS:



| | | |
|-----|--|-----------------------------------|
| A: | Height over low gantry unit | 3.375m |
| A': | Height over high gantry unit. | 6.425m |
| B: | Height of cab | 3.395m |
| C: | Counterweight ground clearance | 1.400m |
| D: | Radius of rear end | 5.000m |
| E: | Center of rotation to boom foot pin | 1.400m |
| F: | Center to center distance of tumbler | 5.340m |
| G: | Overall length of crawler. | 6.415m |
| H: | Height from ground to boom foot pin | 2.275m |
| I: | Overall width of house | 3.400m |
| J: | Ground clearance | 0.535m (Jack cyl. 0.345m) |
| K: | Center to center distance of crawler | extended 4.000m |
| | | retracted 2.660m |
| L: | Overall width of crawler | extended 4.810m |
| | | retracted 3.470m |
| M: | Shoe width | 0.810m |
| N: | Height of shoe. | 1.160m |
| O: | Tail swing radius at low gantry | 5.920m |



CRANE BOOMS: Lattice construction; round tubular main chords, alloy hi-ten steel, with bracing of round steel tubing.

| | |
|--------------------------------|--|
| Boom connections | In-line pin connections. |
| Basic boom | Two-piece, 12.20m basic length; 6.10m base and 6.10m top section; 1.55m deep and 1.55m wide at connections. |
| Boom point machinery | Five head sheaves mounted on antifriction bearings. |
| Boom extensions | Available in 3.05m, 6.10m and 9.14m lengths with pendants. Maximum boom length 54.9m. |
| Jib | Two-piece; 9.14m basic length with 4.57m long base and top sections, available in 4.57m jib extensions. Maximum jib length 18.30m. |
| Boom plus jib length | 45.75m + 18.30m. 48.80m + 13.72m |

HOOK BLOCK:

| | |
|-----------------------------|----------------|
| 80t, five sheaves | Standard |
| 25t, one sheave | Optional extra |

HIGH GANTRY: Retractable high gantry.

LINE SPEED:

| Drums | Root dia. | Type | Line speed (Hoisting, Lowering) | | Cable dia. |
|--------------------|-----------|------------------|---------------------------------|--------------------------------|------------|
| | | | Pump control "OFF" (Ordinary) | Pump control "ON" | |
| Main hoist (Front) | 546mm | Parallel grooved | High 60 m/min Low 30 m/min | High 15 m/min Low 7.5 m/min | 26mm |
| Aux. hoist (Rear) | 546mm | Parallel grooved | High 60 m/min Low 30 m/min | High 15 m/min Low 7.5 m/min | 26mm |
| 3rd drum (option) | 320mm | Parallel grooved | 60 m/min | 15 m/min | 16mm |
| Boom hoist | 420mm | Parallel grooved | 40 m/min | 10 m/min | 20mm |

HOIST REEVING:

| No. of parts of line | Main hoist | | | | | | | | | |
|----------------------|------------|------|------|------|------|------|------|------|------|-----|
| | 10 | 9 | 8 | 7 | 6 | 5 | 4 | 3 | 2 | 1 |
| Max. load (t) | 80.0 | 74.0 | 66.5 | 58.7 | 50.8 | 42.0 | 34.6 | 26.2 | 17.6 | 8.8 |

WORKING WEIGHT AND GROUND PRESSURE:

| Shoe width | Weight | Pressure |
|-------------|--------|-------------------------|
| 810mm | 74.0t | 0.80 kg/cm ² |
| 965mm (Opt) | 75.5t | 0.69 kg/cm ² |

With basic boom and counterweight A, B, C, D.

Weight without counterweight and front attachment: approx. 48t.

COUNTERWEIGHT: A (5.1t), B (6.1t), C (5.1t), D (3.7t)
Total . . . 20.0t

SAFETY DEVICE: Hook over hoist limiting device, boom over hoist limiting device, boom angle indicator, boom back stop, drum pawl lock for main, aux. and boom hoist drum, load moment limiter

GRANDEABILITY: 30% (17°)