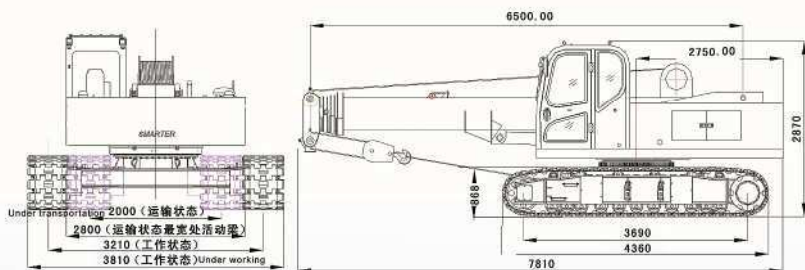


整体参数示意图  
Parameter diagram



# 伸缩臂式履带起重机 TELESCOPIC CRAWLER CRANE

## SMQ120A

专业制造 真诚服务  
SPECIALIZED MANUFACTURING WARMHEARTED SERVICE

■ 本产品图册所包含的图片及数据会随着产品的不断升级而改变，请以实际产品为准。

Hefei Smarter Heavy Industry Co., Ltd. has the privilege to upgrade the photographs and parameters in the catalogue. Latest information should be subjected to actual products.



合肥神马重工有限公司  
HEFEI SMARTER HEAVY INDUSTRY CO., LTD

地址：中国 合肥经济技术开发区繁华大道240号  
邮编：230601  
电话：0551-2205777  
传真：0551-2205854  
E-mail: smarter@188.com  
HTTP://www.chinasmarter.com  
ADD: No.240 Fanhua road, Hefei eco-tech development zone  
P.C: 230601  
TEL: 0551-2205777  
FAX: 0551-2205854  
E-mail: smarter@188.com  
Website: HTTP://www.chinasmarter.com



### 伸缩履带全缩 Track fully retraction

倍率 Multiple	6	4	4	3	3	2	2
臂长/角度 boom length/angle	6.5	8.75	11	13.25	15.5	17.75	20
2	12	6.3	6.3	5.7	4.4		
2.5	7	6.3	6.3	5	4	3.3	
3	5	5.5	5.5	4.5	3.5	2.9	2.2
3.5	3.5	4.1	4.1	4.1	3.2	2.6	2
4	2.5	3.1	3.2	3.2	2.9	2.3	1.8
5		1.9	2	2	2	1.9	1.5
6		1.2	1.3	1.3	1.3	1.3	1.2
7			0.8	0.8	0.8	0.8	0.9
8			0.4	0.5	0.5	0.5	0.5
9				0.2	0.2	0.2	0.3

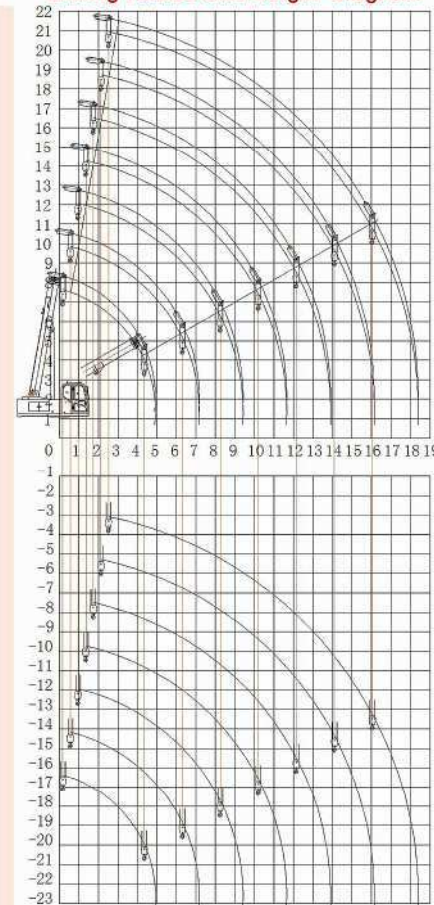
### 伸缩履带全伸 Track fully extension

倍率 Multiple	6	4	4	3	3	2	2
臂长/角度 boom length/angle	6.5	8.75	11	13.25	15.5	17.75	20
2	12	6.3	6.3	5.7	4.4		
2.5	11	6.3	6.3	5	4	3.3	
3	10	6.3	5.9	4.5	3.5	2.9	2.2
3.5	9	6.3	5.3	4.1	3.2	2.6	2
4	7.1	6	4.8	3.7	2.9	2.3	1.8
5		4.6	4	3.1	2.4	1.9	1.5
6		3.1	3.2	2.6	2	1.6	1.2
7			2.3	2.2	1.7	1.3	1
8			1.7	1.7	1.4	1.1	0.8
9				1.3	1.2	0.9	0.6
10				0.9	0.9	0.7	0.5
11					0.7	0.6	0.4
12					0.5	0.5	0.3
13						0.3	0.2
14						0.1	0.1

### 带载行驶 Travel with load

倍率 Multiple	6	4	4	3	3	2	2
臂长/角度 boom length/angle	6.5	8.75	11	13.25	15.5	17.75	20
2	8.4						
2.5	7.7						
3	7						
3.5	6.3						
4	4.97						

### 起升幅度高度示意图 Lifting radius and height diagram



#### 伸缩臂式履带起重机功能简介

伸缩臂式履带起重机是我公司与大连理工大学合作开发的新一代系列产品。该机为国内填补空白产品，技术先进，性能卓越，是现代吊装工程理想的作业施工设备。

本机同时兼备汽车吊无需拆卸臂架及履带吊可带载行走的优点，又具有适应各种工作场地的履带底盘，其履带可以降低对地面的压强，可以更接近吊载荷载，其伸缩臂的灵活性使起重机可以通过较低的空间。主要应用在桥梁下、隧道内等高度受限以及建筑工地上场内转场频繁的非道路工作场合。因而，伸缩臂履带起重机经常可以代替吨位大得多的轮式起重机和桁架臂履带起重机。本机还具有液压伸缩的履带跑轮，收回时便于运输，而伸出时能提高起重机的稳定性。

#### Function Introduction of Telescopic Crawler Crane

Telescopic Crawler Crane is a kind of new generation products, which is developed by our company and Dalian University of Technology. Our advanced and excellent-performance Telescopic Crawler Crane fills the gap in domestic market, and will be an ideal lifting equipment at present.

This machine combines the advantages of autocrane working without boom-disassembling and crawler crane working with load. The track chassis can be used in various working fields, with lower pressure to ground, more close to lifting load. The machine can pass through lower height for its flexible telescopic boom, usually as the replacement of autocrane and truss boom crawler crane with much larger tonnage. It is mainly applied to such following fields, such as under-bridge, inner-tunnel and other height-restricted off-streets area or frequent shifting yard. This machine also has the track span of hydraulic telescopic crane, with the advantages of convenient transportation when retracting and stable performance when extending.

### 总参数表 Parameter list

最大额定起重量Qmax (t) Max. Rated lift capacity (t)	12	
最大额定起重量时的幅度 (m) Radius under max. Lift capacity (m)	2	
额定载荷下起升速率 Lifting power under rated loading capacity	6	
最大起重力矩 (L·m) Max. lifting torque (L·m)	9×3.5	
起升机构最大绳速 (m/min) Single rope speed (m/min)	110	
基本臂起升高度 (m) Boom lifting height (m)	7	
伸缩时间 (伸/缩) (s) Extending and retracting time (extending/retracting) (s)	54/47	
变幅时间 (起/落) (s) Luffing time (up/down) (s)	43/39	
外形尺寸 Overall dimension	起重机总长 (m) Total length	7.81
	起重机总宽 (m) Total width	2.8
	起重机总高 (m) Total height	2.87
回转速度 (rpm) Slewing speed (rpm)	1.8	
履带接地长度×轨距 (mm×mm) Touch length×gauge length (mm×mm)	3690×2000	
爬坡能力 Gradability	40%	
传动形式 Transmission system	全液压传动 Full hydraulic transmission	
行走速度 (km/h) Travel speed (km/h)	1.8/3.2	
起重机总质量Mzc (含重量) (t) Total weight Mzc (including counterweight)	15.4	
主臂 Boom	基本主臂 (m) Boom (m)	6.5
	最长主臂 (m) Boom total length (m)	20
平均接地比压 (Mpa) Ground pressure (Mpa)	0.063	
发动机 Engine	品牌 Brand	进口康明斯 Cummins
	型号 Model	ISDE14030
	形式 type	水冷/涡轮增压 Water cooling/turbo supercharging
	排量 emission	4.5
功率 (KW/rpm) Power (KW/rpm)	103/2200	
燃油箱容量 (L) Fuel tank capacity (L)	280L	
主泵 Main pump	类型 type	斜轴/柱塞/变量 bevel shaft/piston/variable
	压力 (Mpa) pressure (Mpa)	25
	流量 (L/min) Flow (L/MIN)	120×2
齿轮泵 Gear pump	压力 (Mpa) Pressure (Mpa)	20
	流量 (L/min) Flow (L/min)	44
先导泵 Pilot pump	压力 (Mpa) Pressure (Mpa)	10
	流量 (L/min) Flow (L/min)	22
液压油箱容量 (L) hydraulic oil tank capacity (L)	350L	