

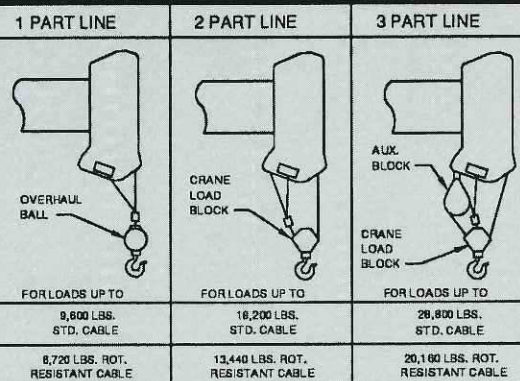
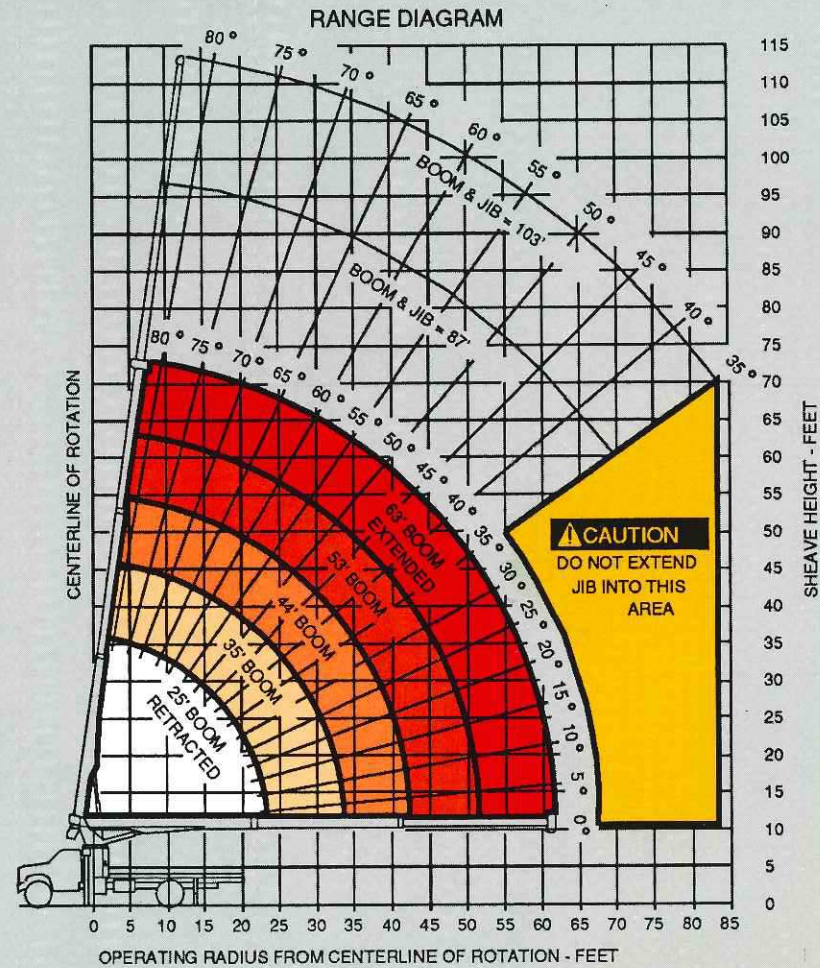
Technical drawing of a crane boom and base. The boom is angled at 82° and has a winch at 82° boom elevation. Dimensions include: 73' vertical height, 8' horizontal distance, 5' 3" vertical distance, 54' 1" vertical distance, 2' 8" horizontal distance, 35' 4" vertical distance, 82° boom angle, 10° base angle, 9 1/2" base height, 96" base width, 10' 1" base width, 9' 2" base width, 20' 4" base width, 20' 1" base width, 8" base width, and 8 1/2" base height. The drawing is labeled "WINCH @ 82° BOOM ELEVATION" and "GROUNDLINE".

# SIMON-RO

## MODEL TC-2863

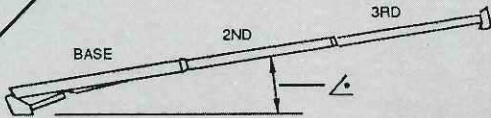
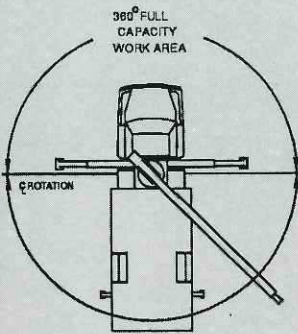
### MAXIMUM LOAD CHART

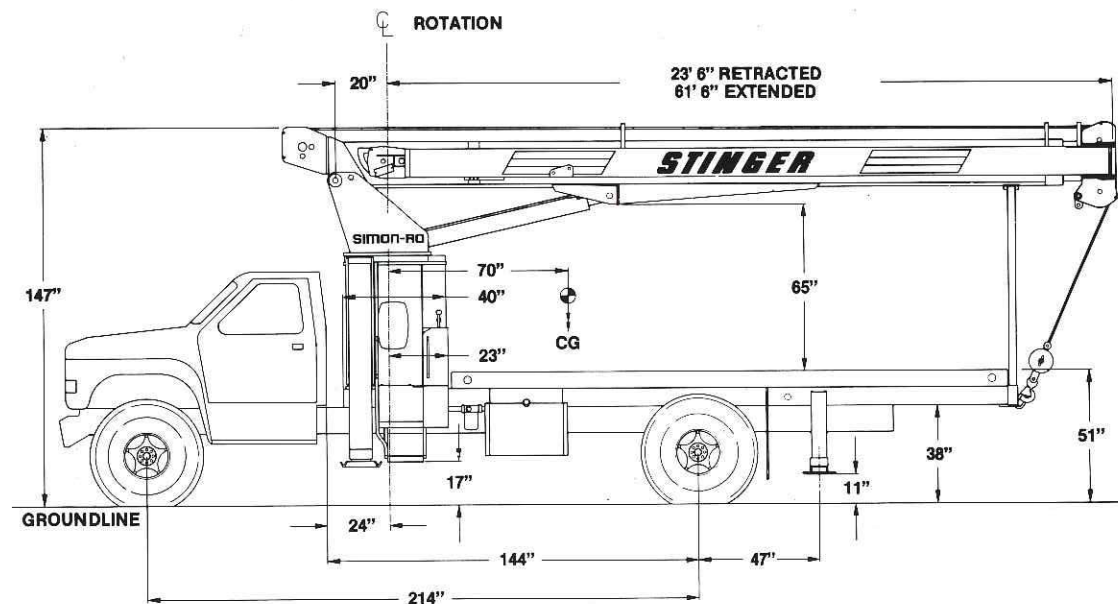
CANADA PAT. NO. 1097265



USE ONLY 9/16" DIAMETER  
CABLE WITH 33,600 LB.  
BREAKING STRENGTH ON  
THIS MACHINE.

3-654-00379

LOAD RATINGS IN LBS. WITH OUTRIGGERS EXTENDED										AREA OF OPERATION	
CRANE CAPACITY RATING	LOADED BOOM ANGLE		BOOM LENGTH								
	25 FT		35 FT		44 FT		53 FT		63 FT	DEDUCTIONS FROM RATED LOADS FOR LOAD HANDLING DEVICES  <hr/> AUXILIARY BLOCK: 50 LBS  OVERHAUL BALL: 125 LBS  CRANE LOAD BLOCK: 200 LBS  SWING AROUND JIB: (STOWED) 400 LBS	
4	76	28800									
5	75	24000									
8	67	16650	74	14200	78	14200					
10	62	14200	70	14200	75	13050	79	12420			
12	56	12250	67	12250	73	11900	77	10750	79	9100	
14	50	10580	63	10580	71	10580	74	9440	77	8300	
16	43	9380	60	9380	67	9380	72	8470	75	7560	
20	32	7350	52	7350	61	7350	69	6900	73	6400	
25			40	5500	53	5500	61	5500	66	5260	
30			24	4340	44	4340	55	4340	61	4340	
35					34	3500	48	3500	56	3500	
40					19	2850	40	2850	50	2850	
45							31	2340	44	2340	
50							17	1930	37	1930	
55									27	1600	
60									14	1330	
JIB CAPACITIES FOR ALL BOOM LENGTHS											
LOADED BOOM ANGLE		35°	40°	45°	50°	55°	60°	65°	70°	75°	80°
RETRACTED 24 FT JIB		700	825	1000	1150	1340	1600	1900	2300	3100	4160
EXTENDED 40 FT JIB		520	580	650	730	810	930	1080	1400	1810	2260



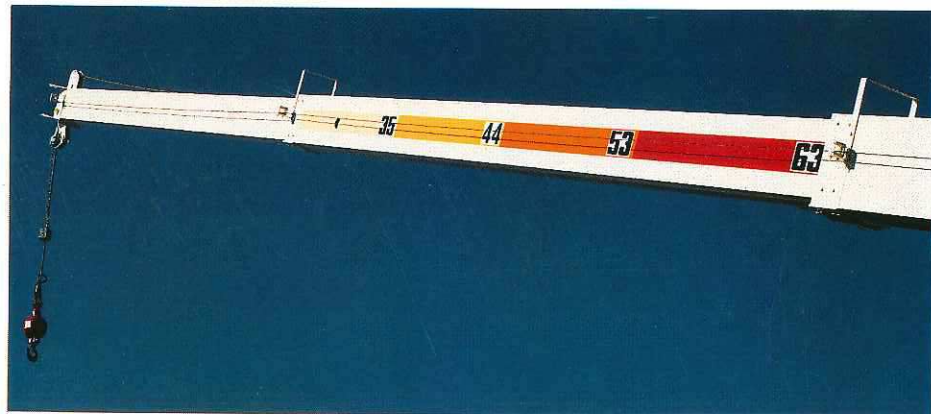
## 2800 SERIES

## Recommended Chassis Requirements

**\* (Minimum Rear GAWR. . 19,000 lbs.)**

**Specifications Subject to Change**  
*Courtesy of Crane.Market*





### STANDARD FEATURES

- 3-section color-coded hydraulic boom. 2nd and 3rd stages extend proportionally.
- Optimized four-plate keel design boom. A Simon-RO exclusive. A lighter, longer, stronger and more rigid boom assembly than is available on other cranes. **It is 10 to 20 percent stronger** with the same or less weight than "non-keel" designs.
- Tapered and flared base boom reinforcement spreads lift cylinder loads and stresses.
- Easily accessible heavy-duty, high-strength, molydisulfide impregnated nylon wear pads in booms and outrigger legs.
- Boom and load chart are color-coded to provide the operator with accurate lift capacity information at all times. A patented Simon-RO exclusive.
- Boom tip has provisions for attaching optional jibs and aerial work baskets. Auxiliary sheave permits 3-parting of the load line.
- Heavy-duty, computer designed turret. Line bored to insure accurate alignment of boom assembly and topping cylinder.
- Boom mounted two-speed winch with automatic, spring applied/pressure released brake. Provides 11,400 lb. first layer wire rope pull. 114/184 feet per minute third wrap speeds. "Fast Draw" thumb control button makes for easy operation of higher speeds.
- 240 feet of 9/16", 6X25 extra improved plow steel wire rope with 33,600 lb. breaking strength.
- Planetary rotation drive with Cam-Lok eccentric ring adjustment of the boom swing drive gear.
- Shear-ball type 370 degree rotation. "One-Stop" centralized bearing lubrication point.
- Manual-over-hydraulic controls.
- Dual operator's platforms and controls with dual foot throttles allow crane operation from either side of the machine. "Grip-strut" platform and "back-up" safety screen.
- Fully protected operator's "console." Valves, plumbing, bearing blocks, outrigger warning switches and the two-speed winch switch are protected from potential damage. Full top-to-bottom enclosure at the flatbed.
- 100% full-flow filtration of the hydraulic system helps prevent downtime and extend unit life.
- Two-section high efficiency vane pump delivers 33/17 gallons per minute at 2,600 psi.
- Subframe is a single fabricated piece, which clamps to the truck chassis. When installed on recommended chassis, no ballast is required, and **there is no derating of the load chart throughout the full 370 degree work area.**
- Front outriggers are independently operated link, out-and-down type providing an 18'-9" stability base. Equipped with pilot operated check valves. Pad size is 16" x 16".
- Rear outriggers are independently operated A-frame type with pilot-operating holding valves. Rear outriggers provide a 10'-1 1/2" stability base when fully extended.

- Other standard features include: engine start/stop switch, oil/filter indicator gauge, system pressure gauge, leveling indicator, cartridge type holding valves on all cylinders, operators, installation, maintenance and parts manuals, horn button, anti-two-block device, outrigger warning alarm, electronic back-up alarm, boom rest and load hook stow ring at the end of the subframe.
- All components are shot-blasted, primed and finished painted prior to assembly and striping with 5 color scheme.
- All machines are thoroughly tested prior to shipment.
- Standard Simon-RO limited warranty.

### OPTIONAL EQUIPMENT

- 24' side-folding jib.
- Two-stage, 40' side-folding jib.
- Capacity alert system.
- Aerial remote controls.
- Auxiliary lifting blocks for two- and three-parting the load line.
- Continuous rotation.
- 18' or 20' wood, steel or steel over wood flatbed with DOT lighting.
- Power-leveled, rotating work platform.
- Tool boxes.
- Pin-on work personnel baskets and platforms.
- Hydraulic tool circuits.
- Three-section hydraulic pump.
- Hydraulic oil cooler.
- Spin-resistant cable.
- Boom-mounted hydraulic hose reel.
- Rear Bumper.
- Roofer's package complete with hydraulic circuitry and necessary load handling options.

### SEATTLE CRANE AND EQUIPMENT CO.

4403 20th Street East  
FIFE, WASHINGTON 98424

## SIMON-RO

Olathe, Kansas 66061  
(913) 782-1200  
FAX (913) 782-1625

# STINGER<sup>®</sup> TC-2863

# SIMON-RO



## STINGER

# 2800 SERIES

(TC-2863 Shown) Maximum sheave height with three section boom: 73'. Maximum lifting radius: 61' 6". Maximum sheave height with two-stage 40' jib: 113'. Maximum lifting capacity: 28,800 lbs.