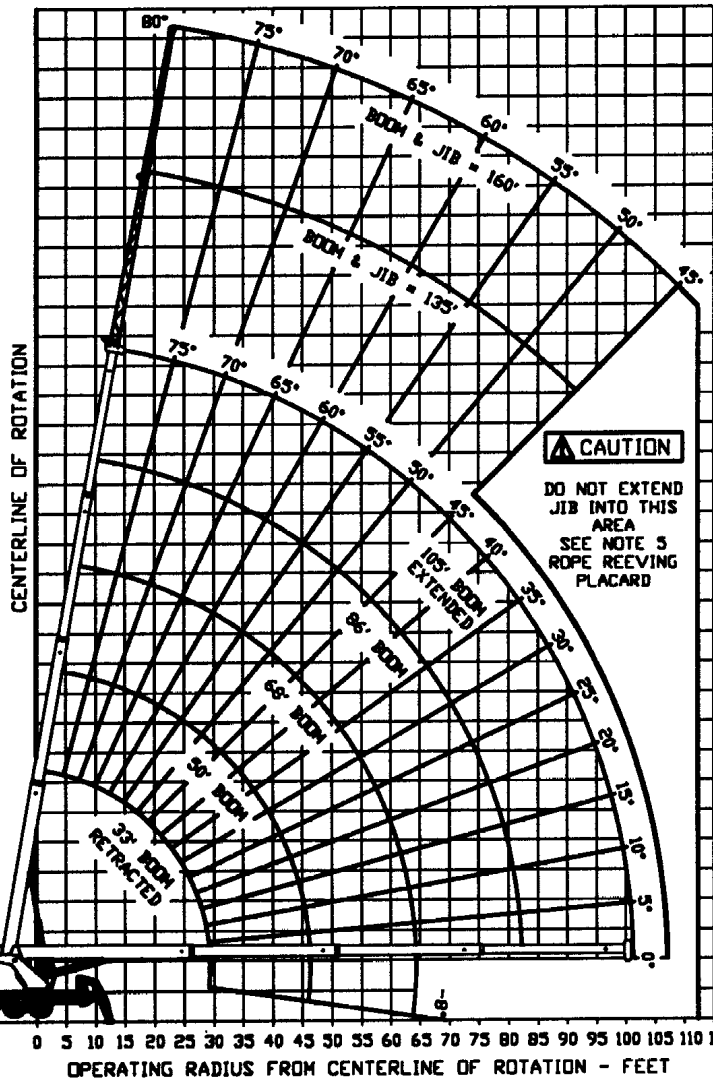


RANGE DIAGRAM

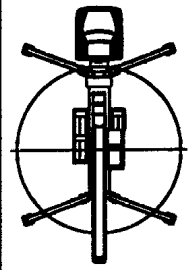


LOAD RATINGS IN LBS. WITH OUTRIGGERS EXTENDED

| DRUM RAI ST INF GT | LOADED BOOM ANGLE | | | | | BOOM LENGTH | | | | |
|--------------------------------|-------------------|-------|-------|-------|--------|-------------|-----|-------|-----|-------|
| | 33 FT | 50 FT | 68 FT | 86 FT | 105 FT | BASE | 2ND | 3RD | 4TH | |
| 5 | 76 | 75000 | | | | | | | | |
| 8 | 70 | 58000 | | | | | | | | |
| 10 | 66 | 50000 | 75 | 35000 | | | | | | |
| 12 | 62 | 43800 | 73 | 33500 | 78 | 29000 | | | | |
| 15 | 56 | 37100 | 69 | 31000 | 76 | 27500 | | | | |
| 20 | 44 | 28400 | 63 | 26600 | 72 | 24000 | 76 | 18600 | | |
| 25 | 29 | 21600 | 57 | 21700 | 68 | 19900 | 73 | 16700 | 77 | 13000 |
| 30 | | | 50 | 17700 | 63 | 17100 | 70 | 15000 | 75 | 11700 |
| 35 | | | 41 | 14000 | 58 | 14400 | 67 | 13200 | 72 | 10600 |
| 40 | | | 31 | 11000 | 53 | 11600 | 63 | 11400 | 70 | 9400 |
| 45 | | | 13 | 8500 | 47 | 9450 | 59 | 9750 | 67 | 8400 |
| 50 | | | | | 40 | 7550 | 55 | 8000 | 63 | 7500 |
| 55 | | | | | 33 | 6100 | 50 | 6600 | 60 | 6600 |
| 60 | | | | | 23 | 5000 | 46 | 5350 | 57 | 5700 |
| 65 | | | | | | | 41 | 4400 | 53 | 4800 |
| 70 | | | | | | | 35 | 3650 | 50 | 3950 |
| 75 | | | | | | | 27 | 3000 | 45 | 3200 |
| 80 | | | | | | | 17 | 2500 | 41 | 2550 |
| 85 | | | | | | | | | 36 | 2000 |
| 90 | | | | | | | | | 30 | 1500 |
| 95 | | | | | | | | | 23 | 1125 |
| 100 | | | | | | | | | 11 | 750 |
| | | 12500 | | 6300 | | 3400 | | 1900 | | 650 |
| | | 600 | | 0 | | 0 | | 0 | | 0 |

NOTE: RATINGS ABOVE THE HEAVY LINE ARE BASED ON STRUCTURAL COMPETENCE AND NOT ON MACHINE STABILITY

AREA OF OPERATION



360° FULL CAPACITY WORK AREA

DEDUCTIONS FROM RATED LOADS FOR HANDLING DEVICES

OVERHAUL BALL: 226 LBS

DOUBLE SHEAVE LOAD BLOCK: 250 LBS

TRIPLE SHEAVE LOAD BLOCK: 591 LBS

AUX SHEAVE 50 LBS

BOOM CAPACITY 2 0' STOWED JIB DEDUCTIONS

JIB CAPACITIES FOR ALL BOOM LENGTHS

| LOADED BOOM ANGLE | 45° | 50° | 55° | 60° | 65° | 70° | 75° | 78° |
|---------------------|------|------|------|------|------|------|------|------|
| RETRACTED 30 FT JIB | 1600 | 1850 | 2450 | 3200 | 4050 | 5000 | 6100 | 6300 |
| EXTENDED 55 FT JIB | 1100 | 1350 | 1650 | 2250 | 2500 | 2850 | 3000 | 3250 |

SIMON-RO

OLATHE, KANSAS 66061

75105

25 TON @ 10 FEET

MAXIMUM LOAD CHART
MAXIMUM OUTRIGGER SPREAD

U.S. PATENT NOS. 4211332, 4459786, 5012939

CANADA PAT. NO. 1097265

THIS MACHINE COMPLIES WITH OSHA REGULATIONS 1910.180 AND 1926.550 WHERE APPLICABLE AT DATE OF MANUFACTURE

3-654-00520
REV "D"

REMOVAL OF THIS PLACARD IS A VIOLATION OF THE LAW.