

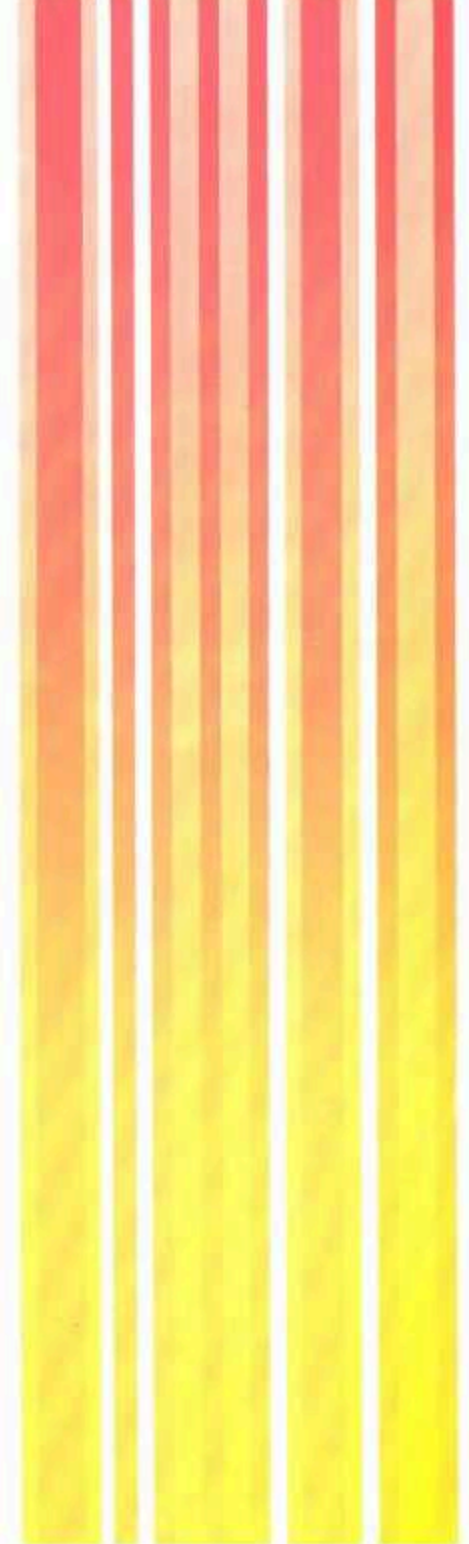
SS 600 SUPER SNORKEL S 600 SUPER SIXTY

EMERGENCY and WORK PLATFORMS



SIMON

SIMON



S600 SUPER SIXTY

AT WORK

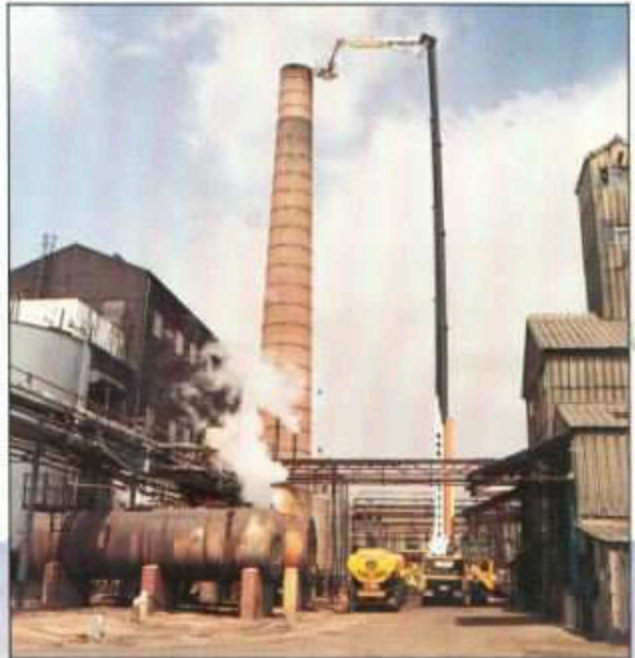
Wherever the need arises for fast,
mobile, high reach access –
send for the Simon Super Sixty.

Unequaled load/reach

Second to none as a robust, reliable work platform with a cage load of 450 kg in any position – 62 metres upreach, 23 metres outreach or 6 metres downreach.

Compact

Only 12 metres long on the road, the compact and highly manoeuvrable S600 is equally at home in city centres or industrial sites, on ancient monuments or modern tower blocks.



- 1 60 metre fractionating column – emergency repair.
- 2 50 metre chimney stack – masonry inspection.
- 3 High level camera platform for film crew.
- 4 60 metre cathedral tower – fabric survey.
- 5 45 metre exhaust stack – paint application.
- 6 Quarry road – safety survey.



SS 600

SUPER SNORKEL Emergency Platform

S 600

SUPER SIXTY Work Platform

Above and Beyond all Others



Simon breaks through the height barrier with the 600 Series emergency and work platform – purpose-built to meet the growing demand for greater high-rise access.

- Only 12 metres long on the road
- 62 metres upreach
- 23 metres outreach
- 6 metres downreach
- Additional cage control for high speed mast operation
- 450 kg cage load in any position
- 7½° levelling capability on gradients and cambers
- Only from Simon – over 30 years in the business

Engineered for maximum upreach, outreach, downreach and rescue capacity in a compact manoeuvrable appliance with a shorter travel length than conventional 3 boom, 30 metre platforms – only 12 metres long on the road.

Cage designed for strength and safety with capacity for work crew and tools or 8 adults – access doors on two sides and extended floor – faster rescue of young, old, disabled or frightened fire victims.



Cage capacity – 8 adults

Direct hydraulic, logical response control from cage and turntable for all boom and mast movements, with additional proportional control in cage for high speed mast extension and retraction – even faster rescue.

Cage-mounted monitor with water flow controlled by operation of screw valve – no stop/start jet impulse loading.

Mast operates in vertical plane only, with booms in any position – no boom knuckle or tailswing to distract operator – full operational manoeuvrability and faster coverage of fire/work area.



Water jet and fog curtain.

2000 l/min water monitor and additional hose connection in Snorkel cage.

Water curtain protects cage occupants and equipment from heat.



Close inspection of ancient monument

Full safe working load of 450 kg in all boom positions – no artificial reach limitations.

Intercom links cage and turntable control consoles – vital for emergency operations.



Safety survey of quarry face.

galvanised steel cables – constant loading in all boom positions for total operator confidence. Cables protected inside booms for minimum maintenance and maximum safety. Dual cage restraint cables for extra security with cage monitor at full flow – **safe and sure.**

Booms – rectangular box sections of high tensile steel. Elevation and extension cylinders double acting with integral lock valves – **safe and sure.**

Mast – vertical extension and retraction by four telescoping sections running on needle roller bearings, powered by four single acting, integrated hydraulic cylinders with integral lock valve protection; erection and stowage by double acting cylinder with integral lock valve protection – **no chains or cables.**

Deceleration at max boom elevation – no safety stop – **no safety stop – greater safety, less maintenance.**

All hydraulic cylinders purpose-built by specialist suppliers to Simon stringent design and quality control criteria, based on 30 years hydraulic platform experience.

Abrasion resistant hoses and electric lines enclosed for protection with easy access for maintenance. Telescoping water pipes carried externally by mast and booms, with relief valve at base collecting head and flexible hoses at pivot points – **simple to maintain, reliable in operation.**



16 metre outreach at ground level – even in front of the vehicle.



Direct cage access from ground level – maximum operator efficiency, minimum operator fatigue.

Cage outreach at ground level from 2 metres to 16 metres from turntable – greater speed and flexibility during rescue operations.



Off-highway capability.

55000 operates on 7 1/2° gradients and cambers with the vehicle facing in any direction. A unique hydraulically operated stabilising system comprising 3 jacks, 2 stabilisers and a longitudinal lift facility of the turntable ensures the vertical attitude of the mast to $\pm 1/2^\circ$ accuracy allowing unrestricted mast extension and boom movement – **with no tailwinding.**

Turntable – continuous rotation in either direction by hydraulic motor and multi-stage epicyclic gearbox with multi-plate disc brake, through high quality steering ring; rotary distributor for hydraulic and electric lines; control console with seat for operator – maximum operational flexibility – **no rotation restrictions.**

Base – rugged construction integrated with vehicle frame – direct ground support through integral jacks and stabilisers with swivelling feet; two hydraulic screw jacks for longitudinal levelling; double level indicator and interlock.

Independent ground controls for jack operation and mast erection/stowing with sequential interlocking systems to ensure operational stability by preventing:

- mast erection until jacks and stabilisers are correctly set.
- mast extension and boom movements until mast is vertical.
- stowing of mast until it is fully retracted and main boom is down.
- jack/stabiliser retraction until mast is stowed.



Four jacks and stabilisers

Constant speed, constant pressure, variable delivery pump drive from vehicle power take-off for reliable power supply and minimum power consumption/noise level/heat generation.

Standby engine/pump unit provides low speed operation for all functions if main engine should fail; emergency controls at turntable for lowering cage to ground in exceptional circumstances.



Fast and manoeuvrable in city traffic.



SIMON

Simon Engineering Dudley Limited
Dudley
West Midlands
DY1 2JX
England

Telex: 53802R
Telephone: 0284 77100 / 77105
Telefax: 0284 77106
Cables: SIMON DUDLEY



Simon design and manufacture – backed by 30 years experience in aerial access. Built to meet International Standards. Full after sales service, worldwide. Quality, safety and reliability assured.

Safety on gradients

With no tailswing to distract the operator, Super Sixty operates on gradients and cambers up to 7½° through a minimal spread, 5 point stabilising system and a unique turntable levelling facility, important for aerial devices above 40 metres.

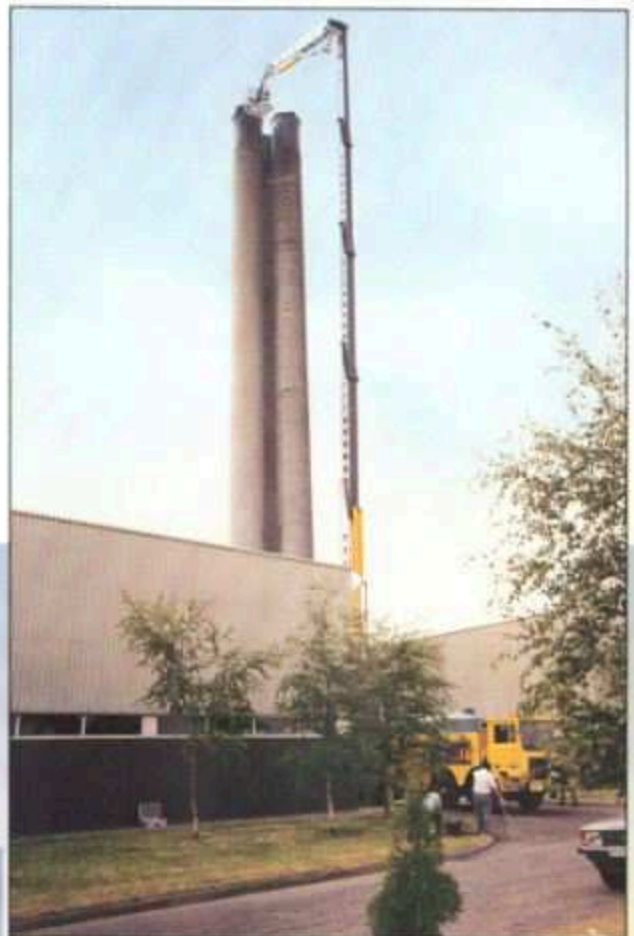
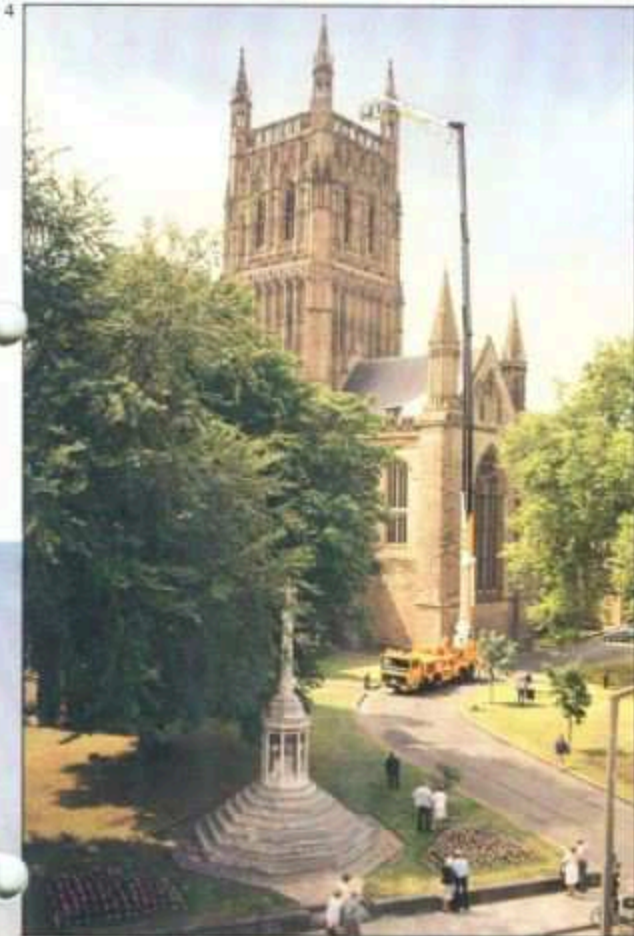
Cost effectiveness

Look at the unequalled opportunities to increase productivity and profitability on those important jobs, inaccessible to conventional machines and traditionally requiring the labour intensive erection of staging systems.

Safe, reliable, multi-purpose

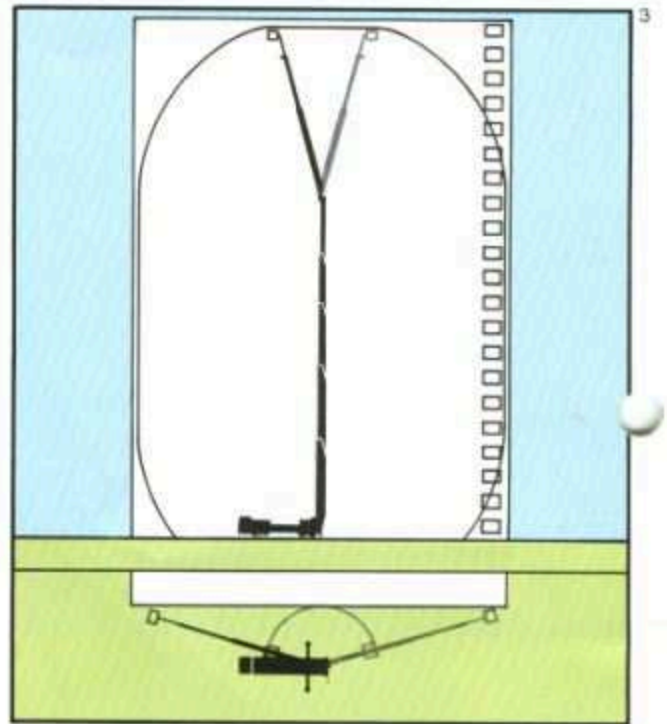
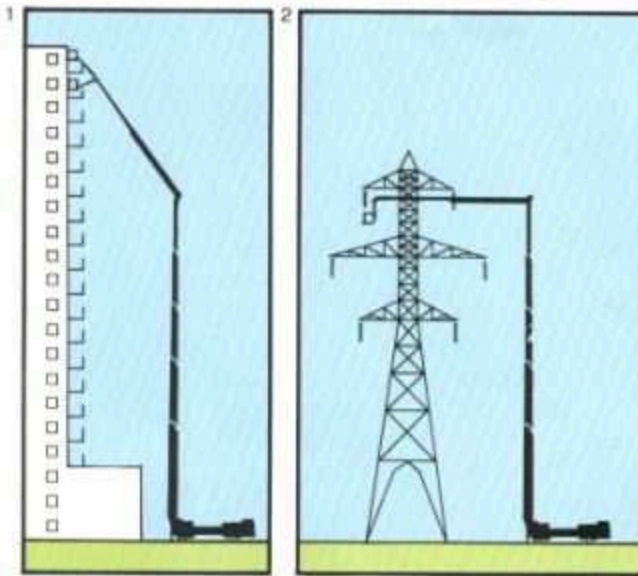
From cathedrals to canals, from cable cars to cooling towers, only the Super Sixty offers such wide ranging operational benefits, with the safety and reliability of full hydraulic control – backed by Simon know-how and experience.

SAFE, SWIFT AND SURE WITH SIMON

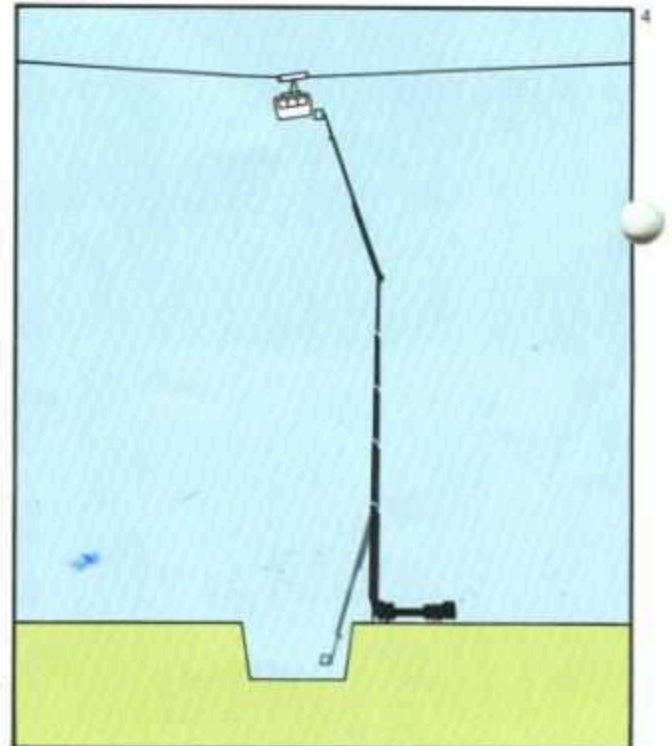


SS 600 S 600

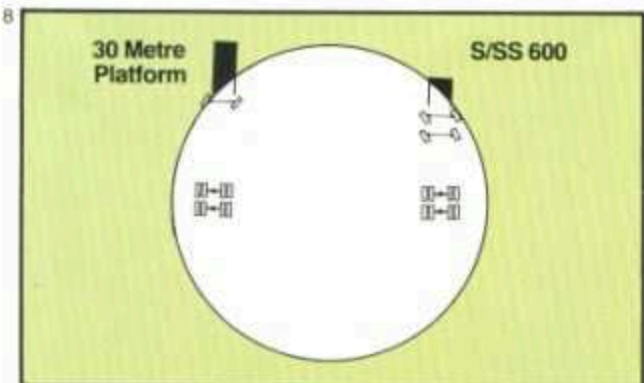
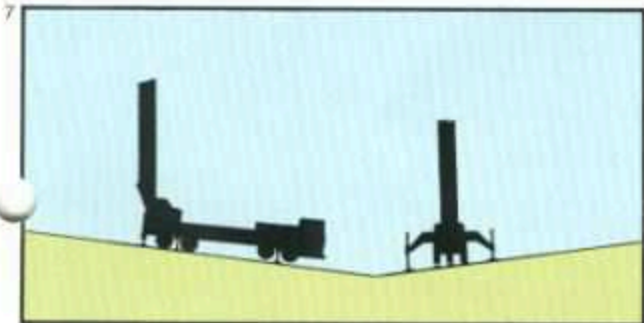
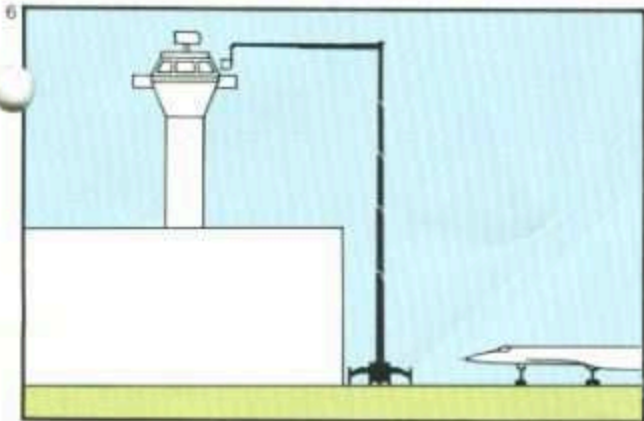
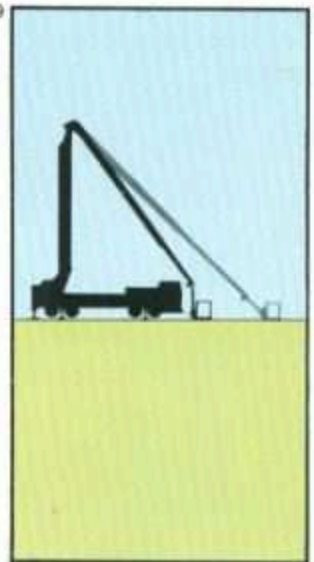
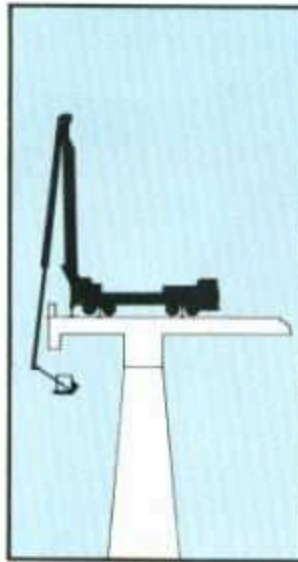
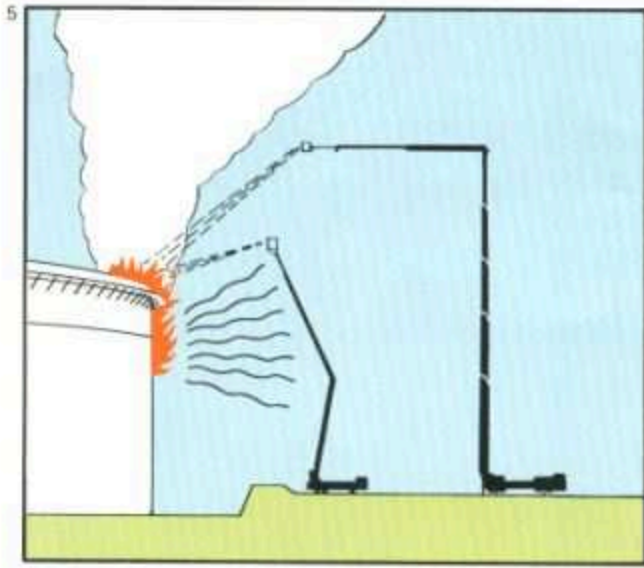
The Simon formula for high level emergency or routine access



1. **62 metres upreach at 9 metres outreach**
for high-rise buildings and installations – hotels, offices, apartments, road and rail bridges, cooling towers, process plant, chimneys, quarry faces, cable cars, nuclear reactors, radio telescopes, radar antennae, monuments, power lines.
- 2/6. **23 metres outreach at 14 to 43 metres upreach**
for previously inaccessible places – industrial installations, airports, power lines.
3. **60 x 44 metre "scrub" area**
for maximum coverage and fast emergency access without moving the vehicle.
4. **Rescues from cable car or canal**
not an every day requirement but vitally important in an emergency.
5. **Stands further back**
to avoid injury or damage from radiant heat at major fires.
7. **Unique 5 point stabilising system**
allows unrestricted operation on combined lateral and longitudinal slopes up to 7½°.
8. **Only 12 metres long on the road**
23 metre turning circle, kerb to kerb – smaller than most 30 metre platforms.
9. **6 metres downreach below ground level**
for bridges, elevated roads, jetties, quarries, canals.
10. **2 to 16 metres outreach at ground level**
cage reaches to ground, within the stabiliser spread or even in front of the vehicle – invaluable in narrow streets for faster rescue.



**ONLY FROM SIMON –
OVER 30 YEARS IN THE BUSINESS**



VEHICLE

Standard vehicles:-

Terberg F1850 8 x 4

Mercedes-Benz 4436/51 8 x 4

These are conventional commercial vehicles with cab positions and transmissions adapted to suit the special requirements of the Simon S/SS600 retaining their world-wide after-sales facilities, the most modern cab design with full headroom, full instrumentation and provides full modern standards of driver comfort, security and control.

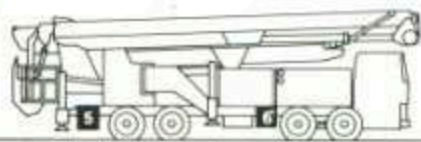
Alternative vehicles

The vehicle is an integral part of the 600 Series, contributing to the compact overall dimensions and operational efficiency. Alternative vehicles would need to be close copies in terms of dimensions, capacities and layout.

Bodywork options

Standard cab has seats for driver and passenger – additional space available as shown.

1. Front left hand side – equipment stowage, or two sideways facing seats.
2. Transverse stowage for 4" suction lines.
3. Fire pump inlets and controls or equipment stowage.
- 4/5/6. Small lockers for hoses, small tools, etc.



SS600 SIMON SUPER SNORKEL S600 SIMON SUPER SIXTY

OPERATIONAL DATA

Overall travelling dimensions:	
length	12.0 m
width	2.5 m
height	3.85 m
Operating width	6.5 m
Maximum cage floor height	60.0 m
at cage rail outreach of	8.5 m
Maximum horizontal outreach to cage rail	22.0 m
Maximum horizontal outreach at cage footstep	22.32 m
Maximum safe working load	450 kg
Cage size, overall (including footstep)	1.9 m wide x 1.35 m long x 1.1 m deep
Main boom operating angle — maximum	165°
Tip boom operating angle — maximum	90°
Monitor capacity	2000 lt./min. nominal
Water piping size	74 mm dia. minimum

VEHICLE DATA

TERBERG F1850	8 x 4 using Volvo tilt cab
5100 mm mean wheelbase	
Engine: Volvo TD121G 6 cylinder, direct injection and turbo supercharging	
12 litres, Diesel,	
Maximum output; 242 kW (329 HP metric)	
Nett ISO/SAE at 2050 r.p.m.	
Transmission: SS600;	Allison Automatic gearbox; HT7740
S600;	Volvo R62 fully synchronised
8 speed range gearbox	
Optional: Allison Automatic gearbox;	
HT7740	

MERCEDES BENZ 4436/51	8 x 4
5125 mm mean wheelbase	
Engine: Mercedes-Benz type OM423	
12 litres, Diesel	
Maximum output; 242 kW (329 HP metric)	
Nett ISO/SAE at 2300 r.p.m.	
Transmission: SS600/S600;	Allison Automatic gearbox; HT750

TYPICAL VEHICLE WEIGHT

Total not including equipment;	40,000 kg
Front bogie;	15,000 kg
Rear bogie;	25,000 kg
Tyre size (12 wheels)	1200 - R24 (PR18)
Maximum road speed	80 km p.h.
Turning circle, kerb to kerb	24.2 metres

Simon Engineering Dudley Limited is a subsidiary of Simon Engineering plc — a major group of more than 70 companies, established over 100 years.

For further information on Simon Hydraulic Platforms please contact Simon Engineering Dudley or your local distributor.

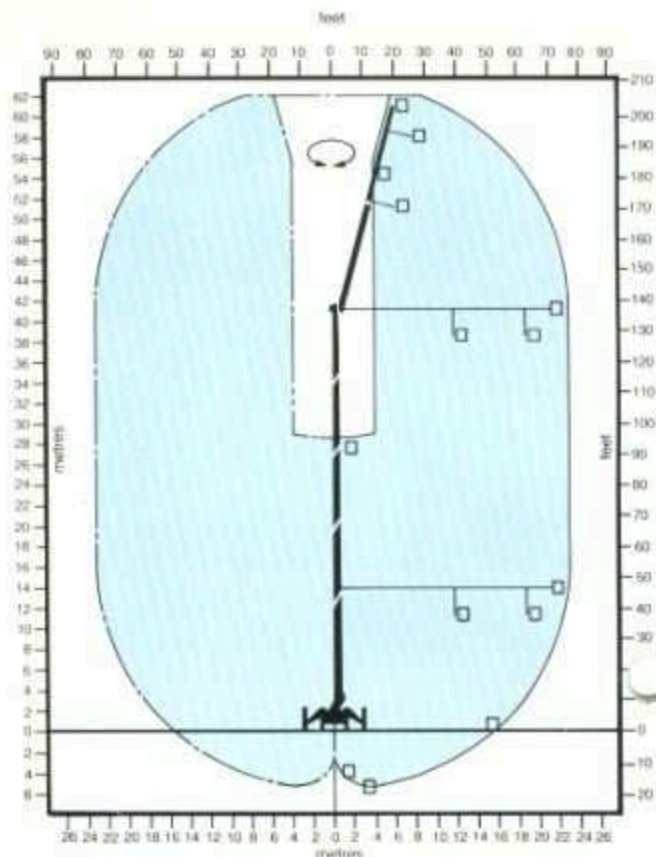
This specification is intended to give a general description and shall not be considered binding or part of a contract.

Simon and Simon Snorkel are registered trademarks. U.K. and Overseas Patents granted/pending.

SIMON

Simon Engineering Dudley Limited
Dudley,
West Midlands
DY1 2HA
England

Telex: 338568
Telephone: Brierley Hill (0384) 70180
Telefax: 0384 77105
Cables: SIMON DUDLEY



CAGE EQUIPMENT:

Standard

Intercom between turntable and cage.
2 x 24 volt 5 Ampere power outlets.
2 x 24 volt 75 watt halogen spotlights.
Davy automatic emergency escape.

Optional: SS600/S600

36 lt./min. 197 bar hydraulic outlet in the cage for hydraulic tools etc.
Hydraulic winch - 100 kg capacity
Diesel auxiliary engine

Optional: SS600

A Rosenbauer R280 water pump driven by a power take off can be fitted to give a monitor output up to 2000 lt./min at 7 bar pressure.

Optional: S600

Vehicle engine remote stop/start
Diesel auxiliary engine remote stop/start

GENERAL DATA

A power take-off driven fire pump can be fitted to give a monitor output up to 2000 lt./min at 7 bar pressure.

Total weight on the road Not exceeding 45 tonnes
(depending on weight of options and equipment carried)