

SERAM

LIFTING BALANCED
CRANES

S200

S200.25E / S200.30E / S200.35E



250 kW



25 m / 35 m
82 ft / 115 ft



149 t / 222 t
164 US t / 245 US t

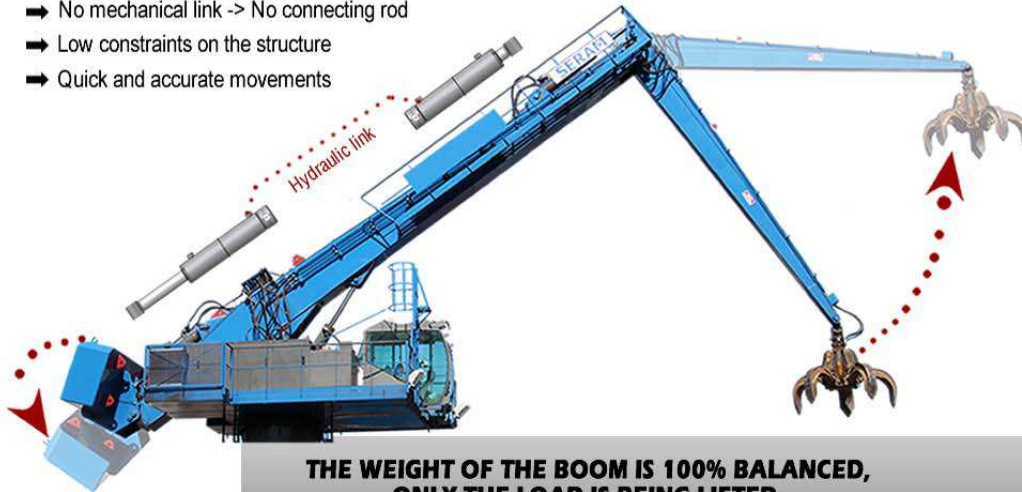
Courtesy of Crane.Market

THE SERAM HYDRAULIC BALANCING THE EASY AND EFFICIENT SOLUTION

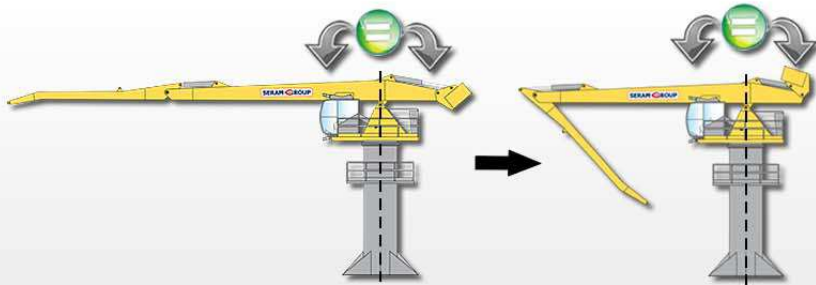
S200
S200.25E / S200.30E / S200.35E

The SERAM crane is the **only** balanced crane **by hydraulic system**

- ➔ No mechanical link -> No connecting rod
- ➔ Low constraints on the structure
- ➔ Quick and accurate movements



**THE WEIGHT OF THE BOOM IS 100% BALANCED,
ONLY THE LOAD IS BEING LIFTED.**



Enjoy the **unique advantages** of the balanced crane

Unequaled operating costs

Up to **80% energy consumption** compared to a diesel conventional crane

Diesel Conventional Crane

- 50%

Electric Conventional Crane

- 80%

SERAM Electric Balanced Crane

An exceptional lifetime of the hydraulic components

The average working pressure of a SERAM crane is **55% lower** than a conventional crane.

**~ 320 bars
~ 4650 psi**

Conventional Crane

**~ 140 bars
~ 2030 psi**

SERAM Balanced Crane

THE SERAM TECHNOLOGY

THE SERAM STRUCTURE THE RELIABILITY

World Reference...

FEM CLASSIFICATION*
A8M8

The most performing grade on the market



+ of 2 Millions of lifting cycles



+ of 20 Years of operating



+ of 40 000 Hours of working operation

*FEM: European Federation of Materials Handling

THE SERAM MAINTENANCE THE SIMPLICITY

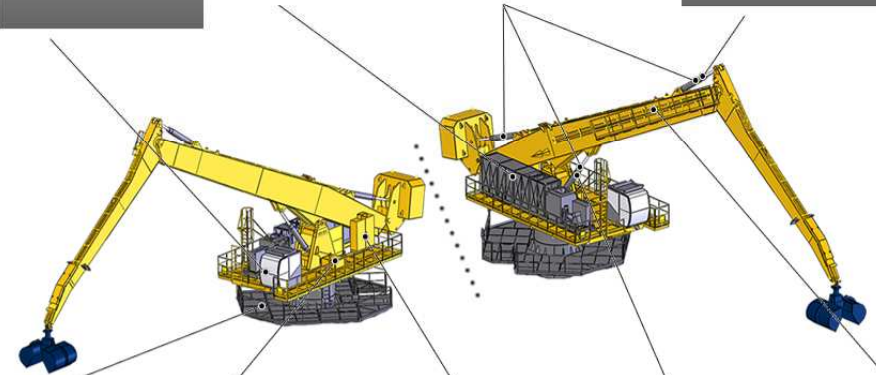
All the main components of the crane have an **easy access**

The SERAM DATA
(System of assistance to diagnosis)
Direct location on the dashboard of the cabin

THE HYDRAULIC UNIT
Direct access from the lateral platform

A SINGLE CYLINDER
(The 3 cylinders are identical and interchangeable)

DIPPER ARM CYLINDER
Direct access from the maintenance walkway



THE RING GEAR
(External toothing / 100% visible)
Direct access from the intermediate platform

THE SWING MOTOR
Direct access from the lateral platform

THE ELECTRIC CABINET
(Raised cabinet to have an easier access to the cables)
Direct access from the lateral platform

MAIN ARM CYLINDER
Direct access from the central platform

LUBRICATION
(Centralized manual lubrication points on the maintenance walkway)



S200

S200.25E / S200.30E / S200.35E

SPECIFICATIONS

MAIN FEATURES

	S200.25E		S200.30E		S200.35E	
Power	200 t.m	67.2 USt.ft	200 t.m	67.2 USt.ft	200 t.m	67.2 USt.ft
Maximum horizontal outreach	25 m	82 ft	30 m	98 ft	35 m	115 ft
Length of the main arm	14 m	46 ft	17 m	56 ft	20 m	66 ft
Length of the dipper arm	11 m	36 ft	13 m	43 ft	15 m	49 ft

ELECTRIC MOTOR

Power	250 kW (400 volts - 50 hertz) / (480 volts - 60 hertz)
Type of starting	By variable frequency drive

DIESEL GENERATOR

(For crawlers only)

Power	440 kVA
-------	---------

HYDRAULIC SYSTEM

Type of the hydraulic system	Load Sensing
Hydraulic pumps	Regulating pumps with Load Sensing regulation
Pump flow for the movements	620 l/min / 164 gal/min
Average working pressure	150 Bars / 2176 psi
Pump flow for the rotation	380 l/min (dedicated closed circuit) / 100 gal/min
Maximum rotation speed	3.5 tr/min
Hydraulic tank	2000 l / 528 gal
Cooling	Oil/Air heat exchanger

WORKING EQUIPMENT

Hydraulic cylinders	300 x 180 x 1950 mm / 11.8 x 7.1 x 76.8 in
Swing motors	Double radial piston engine with hydraulic safety brake
Ring gears	Triple roller bearings with external toothing

SUPPORT

Fixed support (F)	Support fixed on a concrete base		
Dimensions of the anchoring base	N/C - On request		
Forces applied on the ground	NC	NC	NC
Total weight of the machine	149 t / 164 USt	162 t / 179 USt	172 t / 190 USt

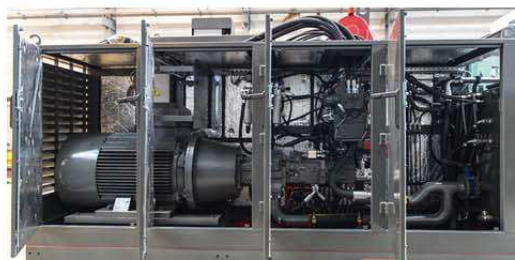
Free Standing support (AS)	Support on 4 shoes - No ground anchoring needed - Can be moved if needed		
Dimensions	Base: 8500 x 8500 mm / 27.9 x 27.9 ft 4 shoes: 1500 x 1500 mm / 4.9 x 4.9 ft		
Maximum forces applied on a shoe	Fz= 865 kN* / 194.5 kipf	Fz= 916 kN* / 205.9 kipf	Fz= 938 kN* / 210.9 kipf
Total weight of the machine	176 t / 194 UST	188 t / 207 UST	198 t / 218 UST

Trolley on rails (C)	Trolley equipped with 4 boggies, with 2 wheels each		
Dimensions	Wheel base: 8500 x 8500 mm / 27.9 x 27.9 ft Wheels of Boggies Ø710mm / 2.3 ft		
Maximum forces applied on a bogie	Fz= 894 kN* / 201 kipf	Fz= 943 kN* / 212 kipf	Fz= 964 kN* / 216.7 kipf
Total weight of the machine	187 t / 206 USt	199 t / 219 USt	208 t / 229 USt

Crawlers (Ch)	Base: 7500 x 7500 mm / 24.6 x 24.6 ft Width of the crawlers: 800 mm / 2.6 ft Speed: 0 to 2 km/h / 0 to 1.2 mph		
Dimensions			
Pression on the ground	17.4 N/cm ² * / 25.2 psi	18.5 N/cm ² * / 26.8 psi	19.3 N/cm ² * / 28 psi
Total weight of the machine	209 t / 230 USt	222 t / 245 USt	232 t / 256 USt

EQUIPMENTS

ACCESS	
Access ladder to the intermediate platform	●
Access stairway to the intermediate platform	Opt
Maintenance walkway	●
HYDRAULIC UNIT	
Lateral and upper openings allowing a total access to the hydraulic unit	●
Motor pump support equipped with an anti-vibration system - Noise mitigation	●
Enhanced cooling	Opt
Sound insulation	Opt
HYDRAULIC EQUIPMENTS	
Cylinders - Single piece chrome steel rods	●
Cylinders - equipped with safety valves and with load limiters	●
Automatic lubrication of the joints and cylinders	●
Automatic lubrication of the tracks and rollers of the gear	●
Automatic lubrication of the toothing of the gear	Opt



OPERATING CABIN

VISIBILITY	
Panoramic windshield	●
2 Pantograph wipers + windshield washer	●
Adjustable sun shades	●
COMFORT	
Reversible air conditioning on the roof of the cabin	●
Additional fan heater	●
Heat-insulating laminated glass type Securit	●
Lateral polycarbonate glazing	Opt
Interior lighting	●
FM radio station / MP3 player	●
Briefcase	●
Hydrocarbon resistant, textured floor mat	●
Electrical outlets 220 volts / 110 volts	●
12V cigare lighter socket	Opt
Communication radio	Opt
Starting with breath test	Opt
Pressurization system of the cabin	Opt
Customer's logo on the arm	Opt



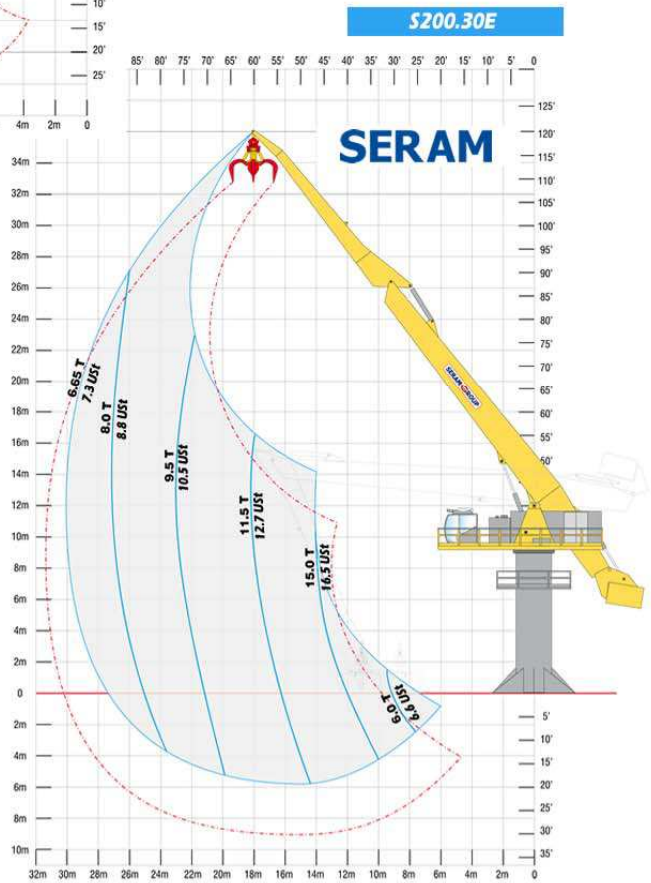
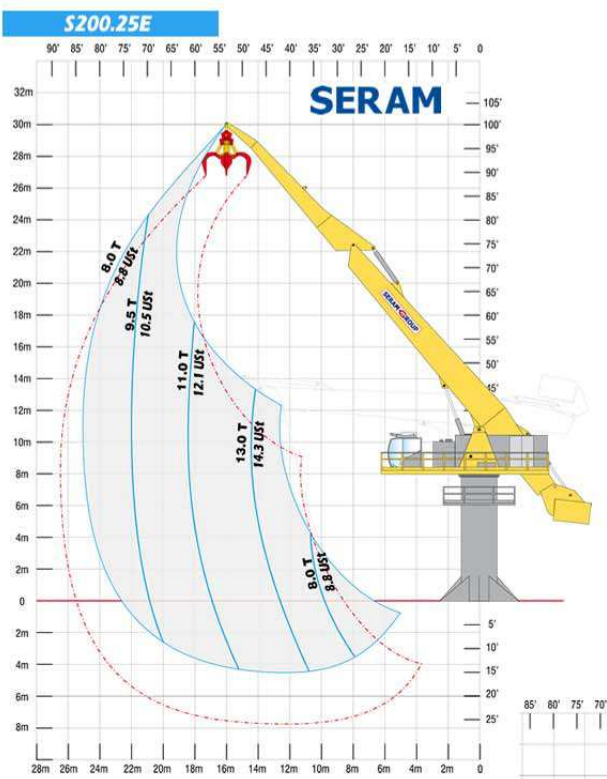
ELECTRICAL EQUIPMENTS	
Hydraulic collector - 4 power slip rings 3ph+t	●
Hydraulic collector - Additional switching ring	Opt
High Voltage / Low Voltage transformer	Opt
OPTIONS	
Handling tools (grapple, clamshell, etc)	Opt
Automatic Weighing system	Opt
Fire hose protection	Opt



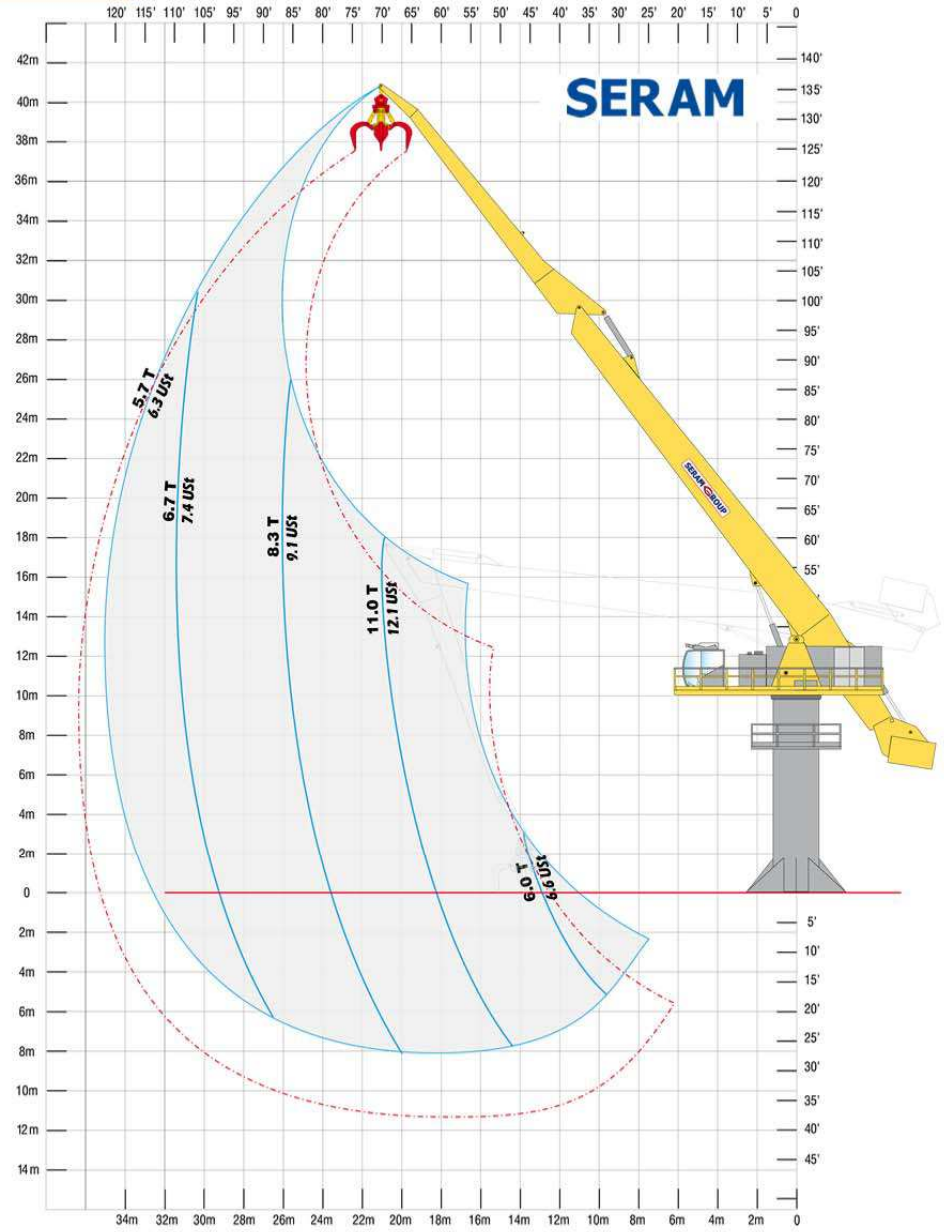
ERGONOMICS	
Ergonomic suspension seat	●
Adjustable backrest and armrests	●
Adjustable footrest	●
Operating and control panel of the crane	●
Hydraulic joysticks on the armrests	●
SERAM DATA : Control and defect recording module	●
SERAM DATA : GSM module for remote supervision	Opt
SERAM VISION : camera support	Opt
Anti-collision system: driving assistance	Opt
Cabin extension	Opt
Guard screen for the windshield	Opt
Lighting of the working area: 2 x 400W	●
Additional lighting	Opt

S200

S200.25E / S200.30E / S200.35E



S200.35E



Load charts in Metric Tons and US Tons, valid at the end of the crane's boom without handling tool. According to the A8M8 classification of the FEM (European Federation of Materials Handling). The loading capacities are valid on a 360° working area.

MODULAR SOLUTIONS

S200

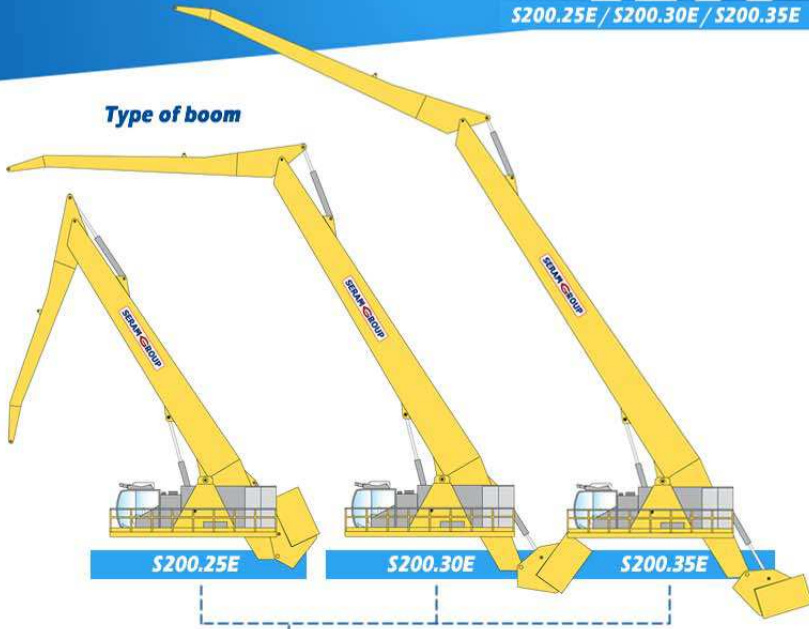
S200.25E / S200.30E / S200.35E

DIMENSIONS

Type of tools

-  Grapple
-  Clamshell
-  Electromagnet
-  Timber grapple

Type of boom



Type of cabin






King 50

Type of engine

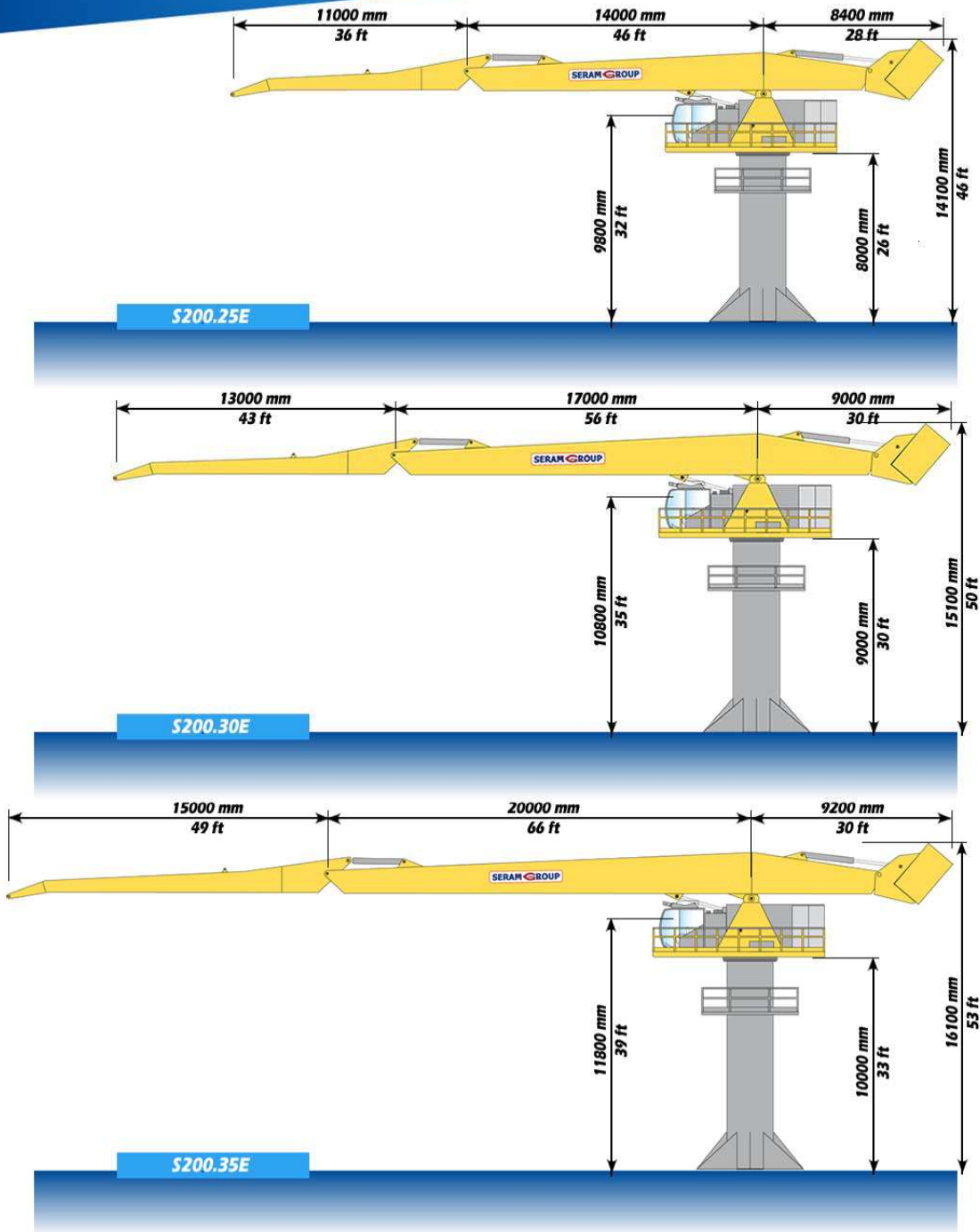
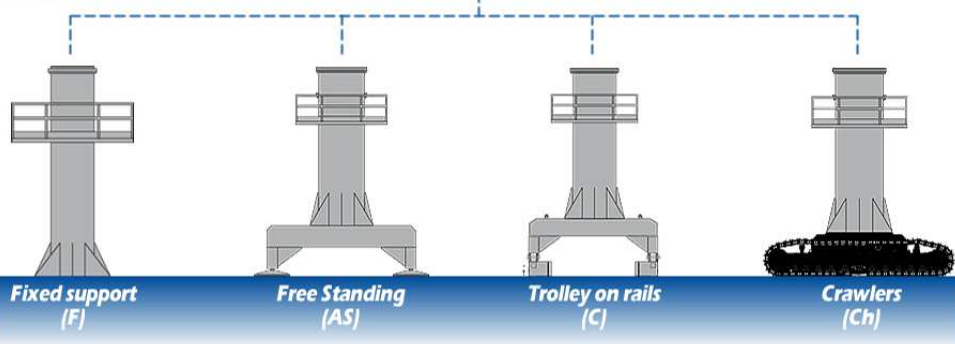


Electro-Hydraulic

Power supply options

-  Diesel generator
-  Transformer
-  Cable reel

Type of supports



Courtesy of Crane.Market

EXAMPLES

S200

S200.25E / S200.30E / S200.35E



S200

S200.25E / S200.30E / S200.35E



Your dealer:

SERAM **SERAM SA**

817 boulevard Marius Berliet - 66000 Perpignan (France)
Tél : 04 68 61 02 28 - seramsa@seram.net

WWW.SERAM.NET