

SERAM

LIFTING BALANCED
CRANES

S150

S150.25E / S150.30E / S150.35E



200 kW



25 m / 35 m
82 ft / 115 ft



117 t / 194 t
129 USt / 214 USt

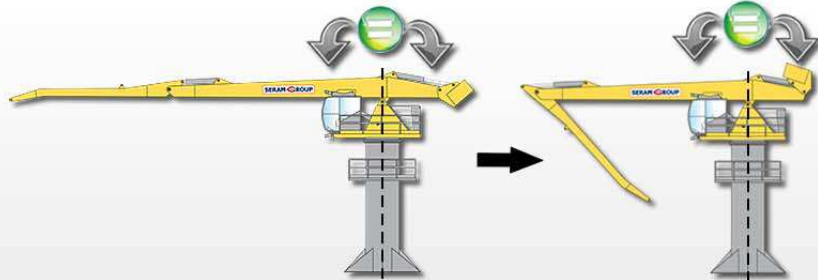
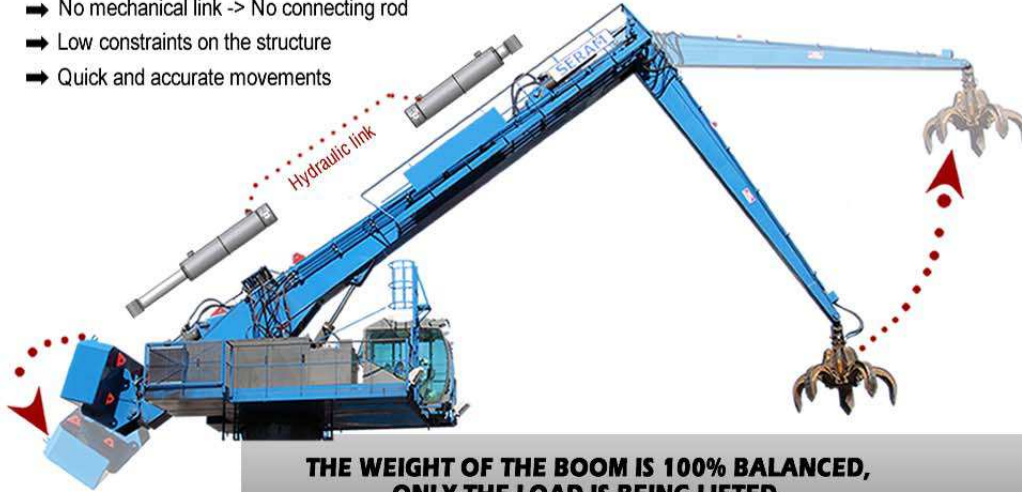
Courtesy of Crane.Market

THE SERAM HYDRAULIC BALANCING THE EASY AND EFFICIENT SOLUTION

S150
S150.25E / S150.30E / S150.35E

The SERAM crane is the **only** balanced crane **by hydraulic system**

- No mechanical link -> No connecting rod
- Low constraints on the structure
- Quick and accurate movements



Enjoy the **unique advantages** of the balanced crane

Unequaled operating costs

Up to **80% energy consumption** compared to a diesel conventional crane

	Diesel Conventional Crane
- 50%	Electric Conventional Crane
- 80%	SERAM Electric Balanced Crane

An exceptional lifetime of the hydraulic components

The average working pressure of a SERAM crane is **55% lower** than a conventional crane.

~ 320 bars ~ 4650 psi	Conventional Crane
~ 140 bars ~ 2030 psi	SERAM Balanced Crane

THE SERAM TECHNOLOGY

THE SERAM STRUCTURE THE RELIABILITY

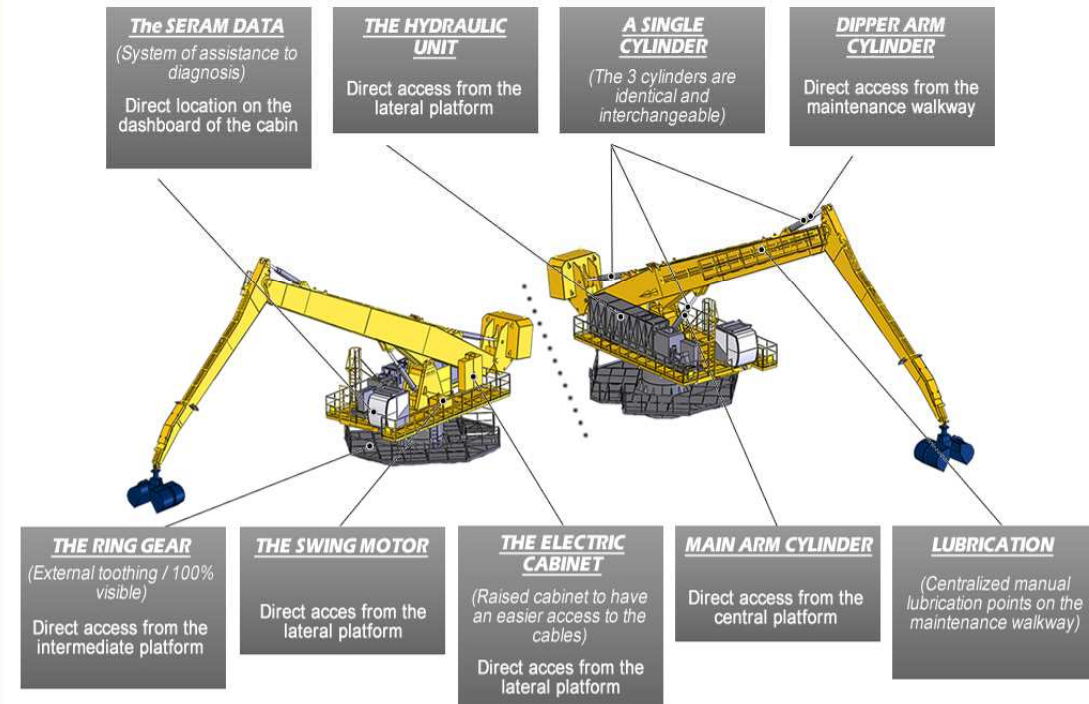
World Reference...

FEM CLASSIFICATION* A8M8 The most performing grade on the market	→	+ of 2 Millions of lifting cycles
	→	+ of 20 Years of operating
	→	+ of 40 000 Hours of working operation

*FEM: European Federation of Materials Handling

THE SERAM MAINTENANCE THE SIMPLICITY

All the main components of the crane have an **easy access**





S150

S150.25E / S150.30E / S150.35E

SPECIFICATIONS

MAIN FEATURES

	S150.25E		S150.30E		S150.35E	
Power	150 t.m	50.4 US t.ft	150 t.m	50.4 US t.ft	150 t.m	50.4 US t.ft
Maximum horizontal outreach	25 m	82 ft	30 m	98 ft	35 m	115 ft
Length of the main arm	14 m	46 ft	17 m	56 ft	20 m	66 ft
Length of the dipper arm	11 m	36 ft	13 m	43 ft	15 m	49 ft

ELECTRIC MOTOR

Power	200 kW (400 volts - 50 hertz) / (480 volts - 60 hertz)
Type of starting	By variable frequency drive

DIESEL GENERATOR

(For crawlers only)

Power	410 kVA
-------	---------

HYDRAULIC SYSTEM

Type of the hydraulic system	Load Sensing
Hydraulic pumps	Regulating pumps with Load Sensing regulation
Pump flow for the movements	620 l/min / 164 gal/min
Average working pressure	140 Bars / 2030 psi
Pump flow for the rotation	380 l/min (dedicated closed circuit) / 100 gal/min
Maximum rotation speed	3.5 tr/min
Hydraulic tank	2000 l / 528 gal
Cooling	Oil/Air heat exchanger

WORKING EQUIPMENT

Hydraulic cylinders	300 x 180 x 1950 mm / 11.8 x 7.1 x 76.8 in
Swing motors	Double radial piston engine with hydraulic safety brake
Ring gears	Rollers and balls with external toothing

SUPPORT

Fixed support (F)	Support fixed on a concrete base		
Dimensions of the anchoring base	5000 x 5000 mm / 16.4 x 16.4 ft		
Forces applied on the ground	Fz= 1490 kN; Mx=3320 kN.m* 335 kipf; 816235 lbf.yd*	Fz= 1650 kN; Mx=3410 kN.m* 370.9 kipf; 838362 lbf.yd*	Fz= 1790 kN; Mx=3490 kN.m* 402.4 kipf; 858031 lbf.yd*
Total weight of the machine	117 t / 129 US t	132 t / 146 US t	145 t / 160 US t

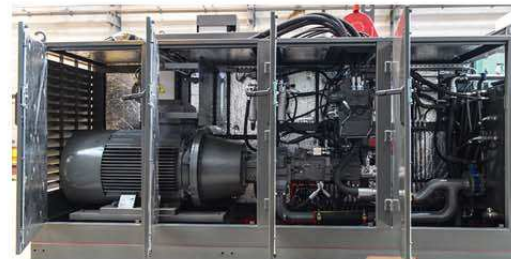
Free Standing support (AS)	Support on 4 shoes - No ground anchoring needed - Can be moved if needed		
Dimensions	Base: 7500 x 7500 mm / 24.6 x 24.6 ft 4 shoes: 1500 x 1500 mm / 4.9 x 4.9 ft		
Maximum forces applied on a shoe	Fz= 780 kN* / 175.4 kipf	Fz= 810 kN* / 182.1 kipf	Fz= 850 kN* / 191.1 kipf
Total weight of the machine	141 t / 155 US t	156 t / 172 US t	167 t / 184 US t

Trolley on rails (C)	Trolley equipped with 4 boggies, with 2 wheels each		
Dimensions	Wheel base: 8000 x 8000 mm / 26 x 26 ft Wheels of Boggies Ø630mm / 2.1 ft		
Maximum forces applied on a bogie	Fz= 790 kN* / 177.6 kipf	Fz= 840 kN* / 188.8 kipf	Fz= 890 kN* / 200.1 kipf
Total weight of the machine	150 t / 165 US t	164 t / 181 US t	176 t / 194 US t

Crawlers (Ch)	Base: 7500 x 7500 mm / 24.6 x 24.6 ft Width of the crawlers: 800 mm / 2.6 ft Speed: 0 to 2 km/h / 0 to 1.2 mph		
Dimensions			
Pressure on the ground	14.75 N/cm²* / 21.4 psi	16.0 N/cm²* / 23.2 psi	17.1 N/cm²* / 24.8 psi
Total weight of the machine	177 t / 195 US t	192 t / 212 US t	205 t / 226 US t

EQUIPMENTS

ACCESS	
Access ladder to the intermediate platform	●
Access stairway to the intermediate platform	Opt
Maintenance walkway	●
HYDRAULIC UNIT	
Lateral and upper openings allowing a total access to the hydraulic unit	●
Motor pump support equipped with an anti-vibration system - Noise mitigation	●
Enhanced cooling	Opt
Sound insulation	Opt
HYDRAULIC EQUIPMENTS	
Cylinders - Single piece chrome steel rods	●
Cylinders - equipped with safety valves and with load limiters	●
Automatic lubrication of the joints and cylinders	●
Automatic lubrication of the tracks and rollers of the gear	●
Automatic lubrication of the toothing of the gear	Opt



OPERATING CABIN

VISIBILITY	
Panoramic windshield	●
2 Pantograph wipers + windshield washer	●
Adjustable sun shades	●
COMFORT	
Reversible air conditioning on the roof of the cabin	●
Additional fan heater	●
Heat-insulating laminated glass type Securit	●
Lateral polycarbonate glazing	Opt
Interior lighting	●
FM radio station / MP3 player	●
Briefcase	●
Hydrocarbon resistant, textured floor mat	●
Electrical outlets 220 volts / 110 volts	●
12V cigare lighter socket	Opt
Communication radio	Opt
Starting with breath test	Opt
Pressurization system of the cabin	Opt
Customer's logo on the arm	Opt



ELECTRICAL EQUIPMENTS

Hydraulic collector - 4 power slip rings 3ph+t	●
Hydraulic collector - Additional switching ring	Opt
High Voltage / Low Voltage transformer	Opt
OPTIONS	
Handling tools (grapple, clamshell, etc)	Opt
Automatic Weighing system	Opt
Fire hose protection	Opt

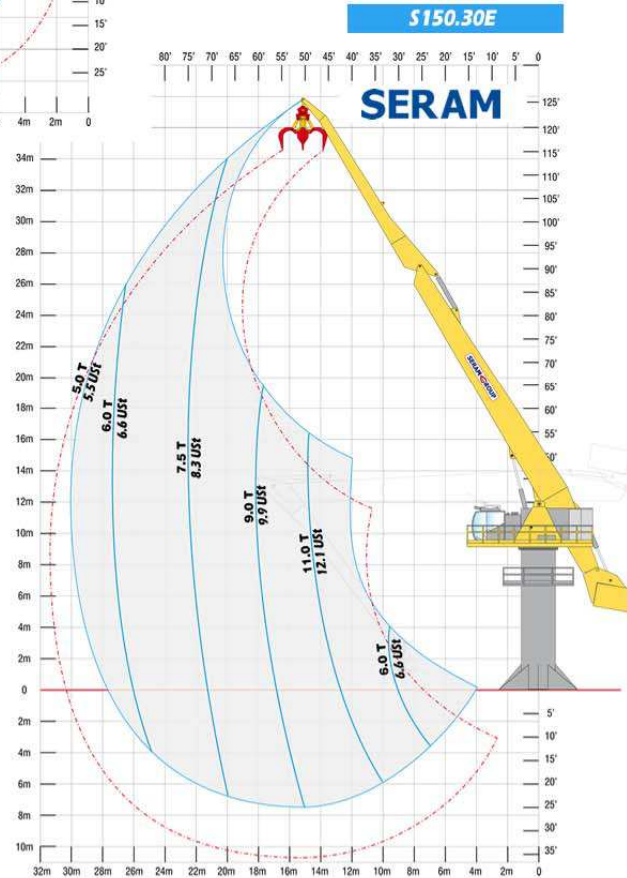
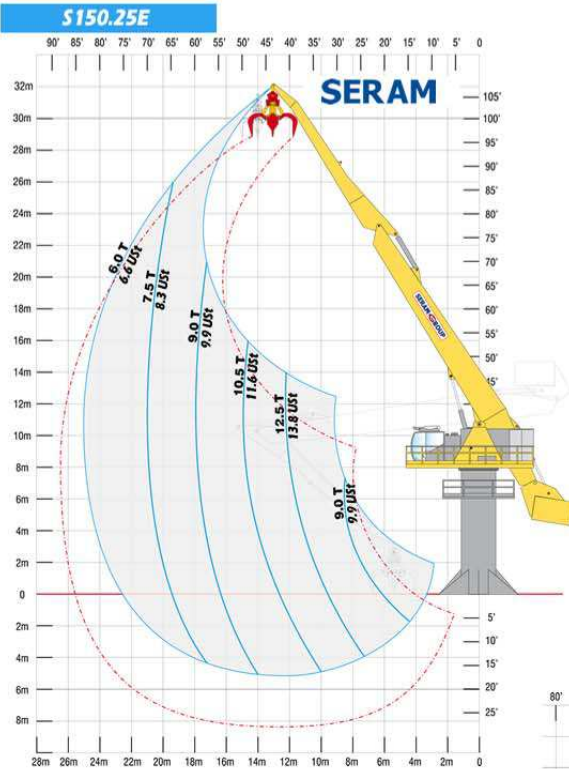


ERGONOMICS

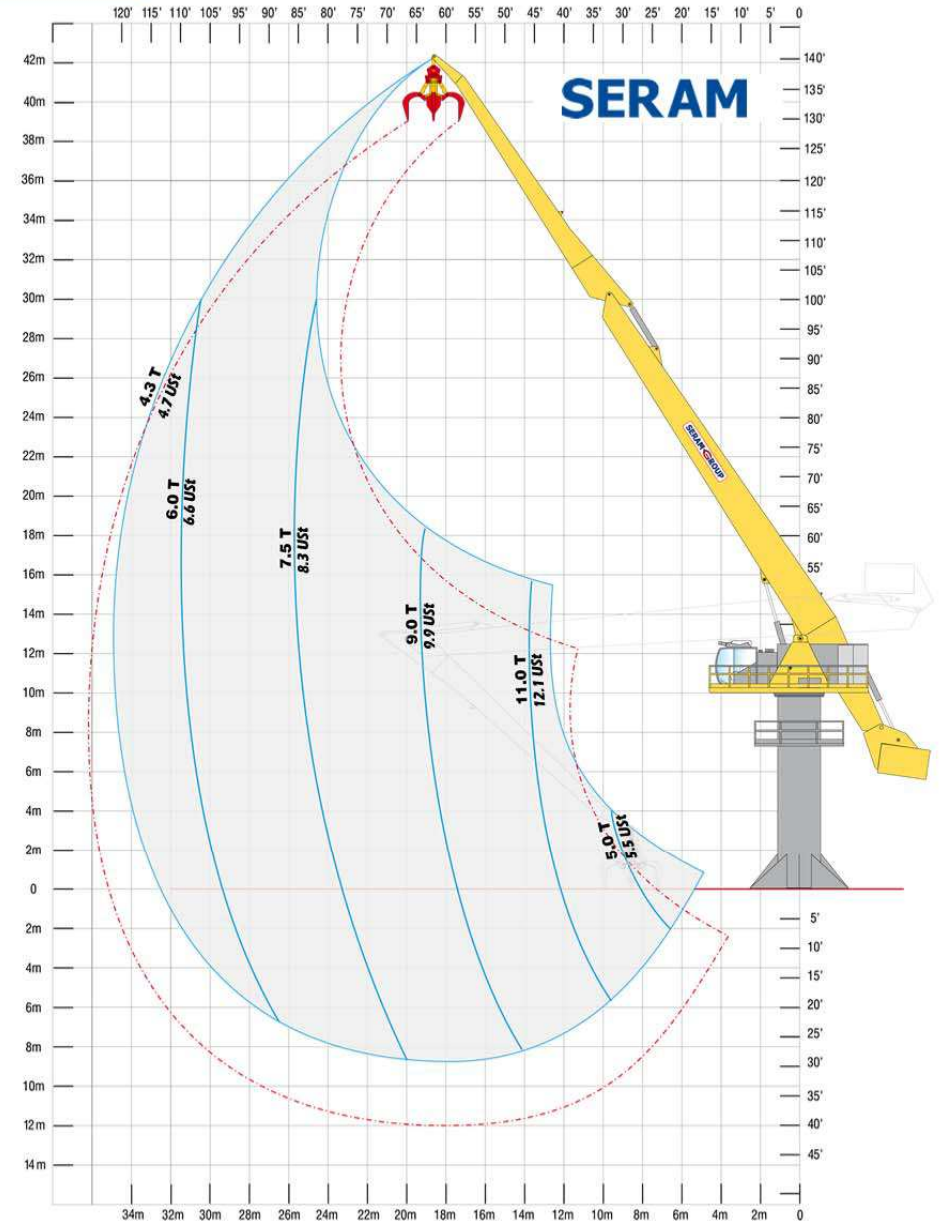
Ergonomic suspension seat	●
Adjustable backrest and armrests	●
Adjustable footrest	●
Operating and control panel of the crane	●
Hydraulic joysticks on the armrests	●
SERAM DATA : Control and defect recording module	●
SERAM DATA : GSM module for remote supervision	Opt
SERAM VISION : camera support	Opt
Anti-collision system: driving assistance	Opt
Cabin extension	Opt
Guard screen for the windshield	Opt
Lighting of the working area: 2 x 400W	●
Additional lighting	Opt

S150

S150.25E / S150.30E / S150.35E



S150.35E



Load charts in Metric Tons and US Tons, valid at the end of the crane's boom without handling tool. According to the A8M8 classification of the FEM (European Federation of Materials Handling). The loading capacities are valid on a 360° working area.

MODULAR SOLUTIONS

S150

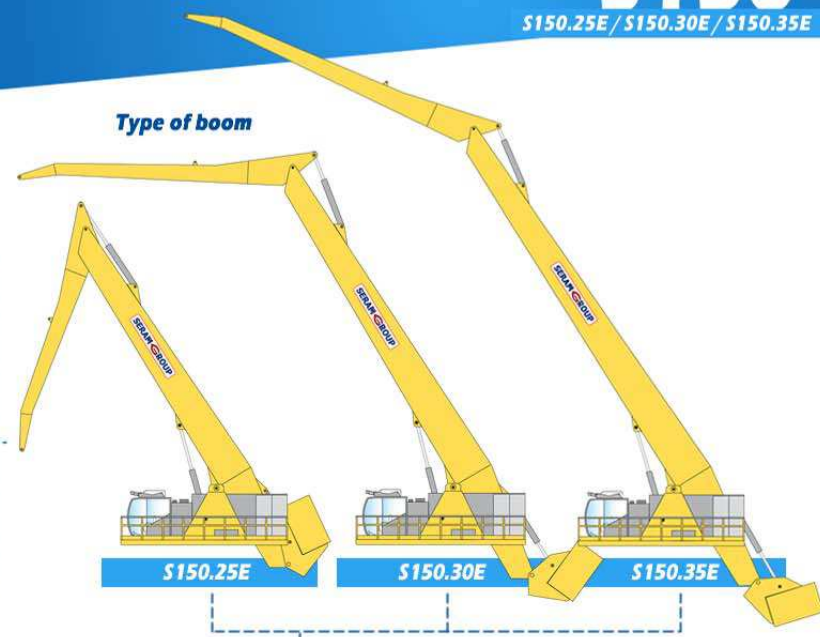
S150.25E / S150.30E / S150.35E

DIMENSIONS

Type of tools

- Grapple
- Clamshell
- Electromagnet
- Timber grapple

Type of boom



Type of cabin



Type of engine



Electro-Hydraulic

Power supply options



Diesel generator

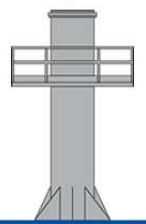


Transformer

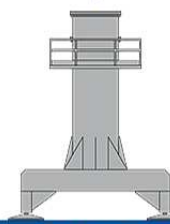


Cable reel

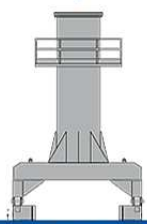
Type of supports



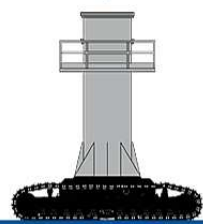
Fixed support (F)



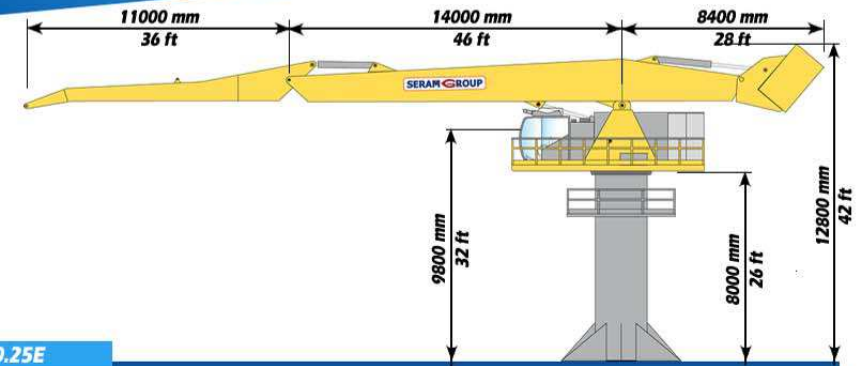
Free Standing (AS)



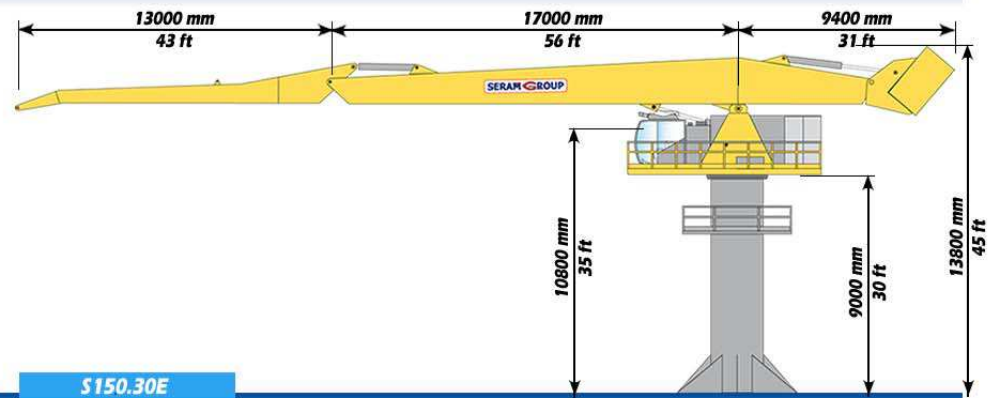
Trolley on rails (C)



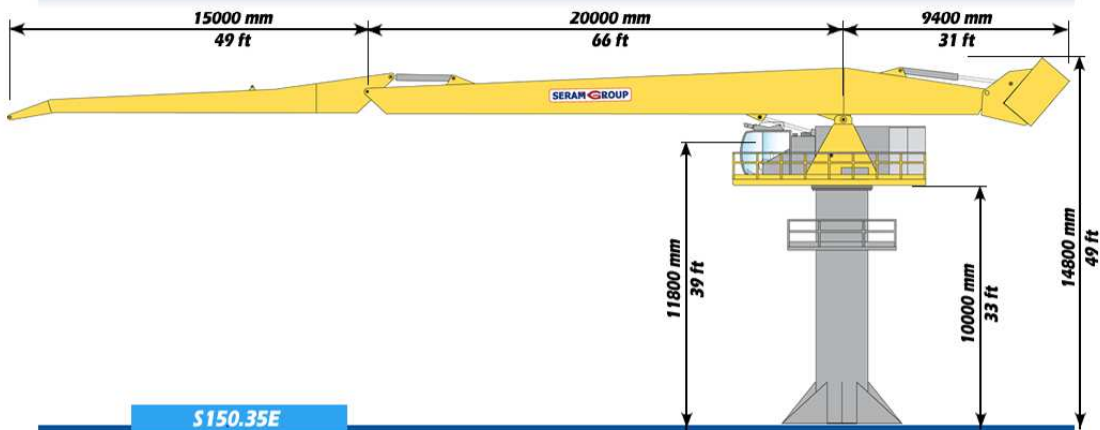
Crawlers (Ch)



S150.25E



S150.30E



S150.35E

EXAMPLES

S150
S150.25E / S150.30E / S150.35E



S150

S150.25E / S150.30E / S150.35E



Your dealer:

SERAM
SERAM SA

817 boulevard Marius Berliet - 66000 Perpignan (France)
Tél : 04 68 61 02 28 - seramsa@seram.net

WWW.SERAM.NET