

# SERAM

INDOOR HANDLING  
CRANES

# S35

S35.12 / S35.15



**75 kW**



**12 m / 15 m**  
**39 ft / 49 ft**



**22 t / 36 t**  
**24 USt / 40 USt**

*Courtesy of Crane.Market*



## MAIN FEATURES

	S35.12		S35.15	
Power	35 t.m	11.8 USf.ft	35 t.m	11.8 USf.ft
Maximum horizontal outreach	12 m	39 ft	15 m	49 ft
Length of the main arm	6.5 m	21 ft	8.5 m	28 ft
Length of the dipper arm	5.5 m	18 ft	6.5 m	21 ft

## ELECTRIC MOTOR

Power	75 kW (400 volts - 50 hertz) / (480 volts - 60 hertz)
Type of starting	By variable frequency drive

## DIESEL GENERATOR

(For crawlers support only)

Power	On request
-------	------------

## HYDRAULIC SYSTEM

Type of the hydraulic system	Load Sensing
Hydraulic pumps	Regulating pumps with Load Sensing regulation
Pump flow for the movements	195 l/min / 51 gal/min
Average working pressure	250 Bars / 3628 psi
Pump flow for the rotation	80 l/min (dedicated closed circuit) / 21 gal/min
Maximum rotation speed	4 tr/min
Hydraulic tank	775 l / 205 gal
Cooling	Oil/Air heat exchanger

## WORKING EQUIPMENT

Hydraulic cylinders	170 x 100 x 1330 mm / 6.7 x 3.9 x 52.4 in
Swing motors	Radial piston engine with hydraulic safety brake
Ring gears	Crossed rollers with external toothing

## SUPPORT

<b>Fixed support (F)</b>	Support fixed on a concrete base	
Dimensions of the anchoring base	2350 x 2350 mm / 7.7 x 7.7 ft	
Forces applied on the ground	Fz= 370kN; Mx=1005kN.m* 83.2 kipf; 247083 lbf.yd	Fz= 390kN; Mx=1150kN.m* 87.7 kipf; 282732 lbf.yd
Total weight of the machine	22 t / 24 USf	24 t / 26 USf

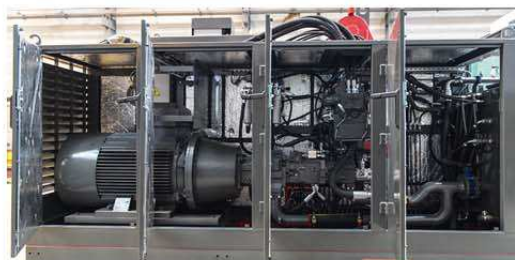
## Free Standing support (AS)

Support on 4 shoes - No ground anchoring needed - Can be moved if needed

Dimensions	Base: 4500 x 4500 mm / 14.8 x 14.8 ft 4 shoes: 1500 x 1500 mm / 4.9 x 4.9 ft	
Maximum forces applied on a shoe	Fz= 230kN* / 51.7 kipf	Fz= 250kN* / 56.2 kipf
Total weight of the machine	34 t / 37 USf	36 t / 40 USf

## EQUIPMENTS

<b>ACCESS</b>	
Access ladder to the intermediate platform	●
Access stairway to the intermediate platform	Opt
<b>HYDRAULIC UNIT</b>	
Lateral and upper openings allowing a total access to the hydraulic unit	●
Motor pump support equipped with an anti-vibration system - Noise mitigation	●
Enhanced cooling	Opt
Sound insulation	Opt
<b>HYDRAULIC EQUIPMENTS</b>	
Cylinders - Single piece chrome steel rods	●
Cylinders - equipped with safety valves and with load limiters	●
Automatic lubrication of the joints and cylinders	●
Automatic lubrication of the tracks and rollers of the gear	Opt
Automatic lubrication of the toothing of the gear	Opt



## OPERATING CABIN

<b>VISIBILITY</b>	
Panoramic windshield	●
2 Pantograph wipers + windshield washer	●
Adjustable sun shades	●
<b>COMFORT</b>	
Reversible air conditioning on the roof of the cabin	●
Additional fan heater	●
Heat-insulating laminated glass type Securit	●
Lateral polycarbonate glazing	Opt
Interior lighting	●
FM radio station / MP3 player	●
Briefcase	●
Hydrocarbon resistant, textured floor mat	●
Electrical outlets 220 volts / 110 volts	●
12V cigare lighter socket	Opt
Communication radio	Opt
Starting with breath test	Opt
Pressurization system of the cabin	Opt
Customer's logo on the arm	Opt



## ELECTRICAL EQUIPMENTS

Hydraulic collector - 4 power slip rings 3ph+t	●
Hydraulic collector - Additional switching ring	Opt
High Voltage / Low Voltage transformer	Opt
<b>OPTIONS</b>	
Handling tools (grapple, clamshell, etc)	Opt
Automatic Weighing system	Opt



## ERGONOMICS

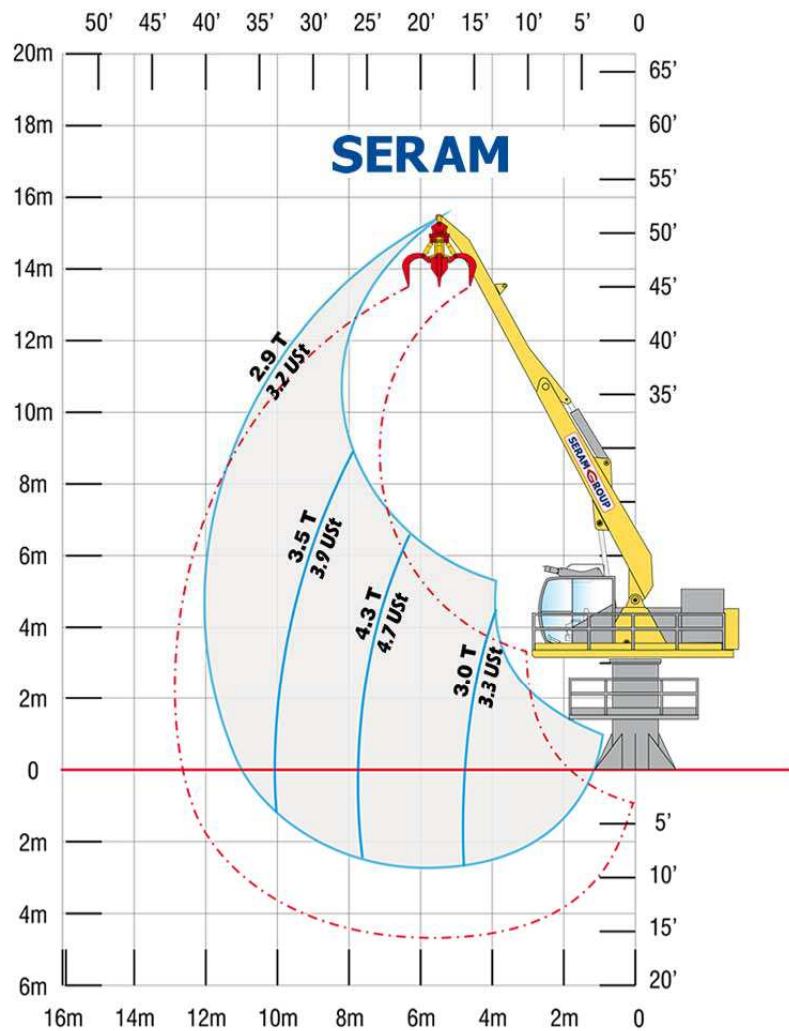
Ergonomic suspension seat	●
Adjustable backrest and armrests	●
Adjustable footrest	●
Operating and control panel of the crane	●
Hydraulic joysticks on the armrests	●
SERAM DATA : Control and defect recording module	●
SERAM DATA : GSM module for remote supervision	Opt
SERAM VISION : camera support	Opt
Anti-collision system: driving assistance	Opt
Cabin extension	Opt
Guard screen for the windshield	Opt
Lighting of the working area: 2 x 400W	●
Additional lighting	Opt



**S35**  
S35.12 / S35.15

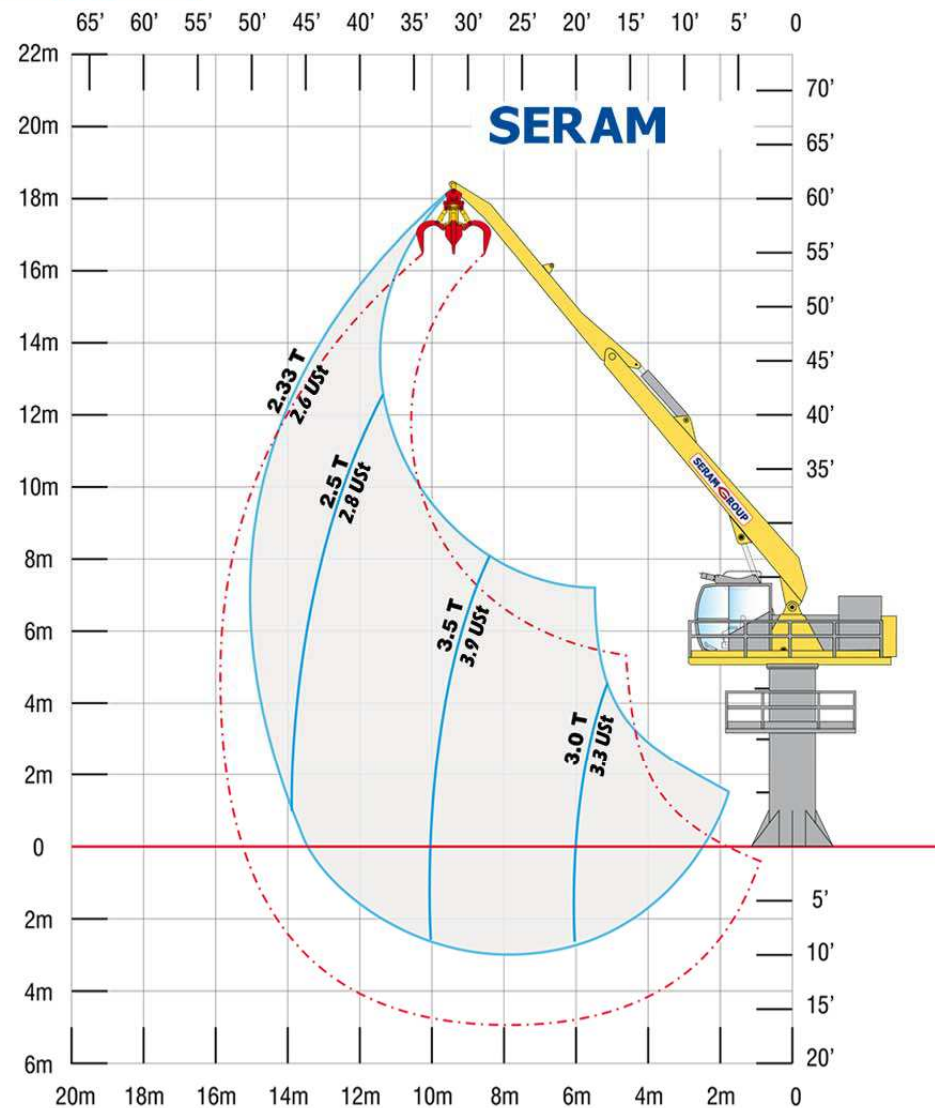
# LOAD CHARTS

S35.12



Load charts in Metric Tons and US Tons, valid at the end of the crane's boom without handling tool. According to the A8M8 classification of the FEM (European Federation of Materials Handling). The loading capacities are valid on a 360° working area.

S35.15



Load charts in Metric Tons and US Tons, valid at the end of the crane's boom without handling tool. According to the A8M8 classification of the FEM (European Federation of Materials Handling). The loading capacities are valid on a 360° working area.

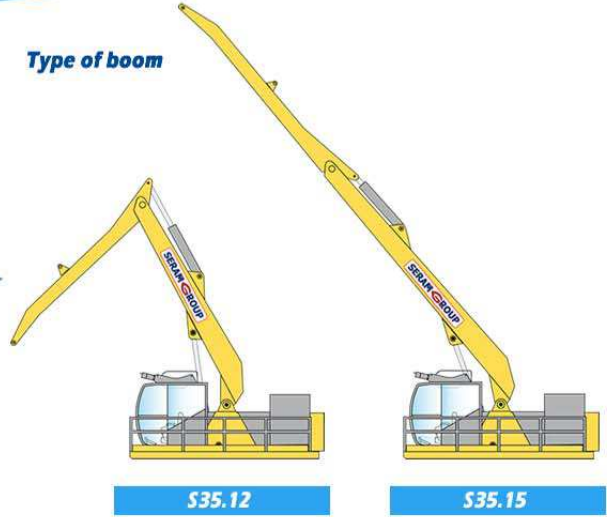


### Type of tools



Grapple  
Clamshell  
Electro-magnet  
Timber grapple

### Type of boom



S35.12

S35.15

### Type of cabin



King 25

### Type of engine



Electro-Hydraulic

### Power supply options



Diesel generator

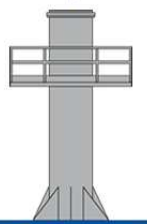


Transformer

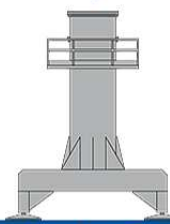


Cable reel

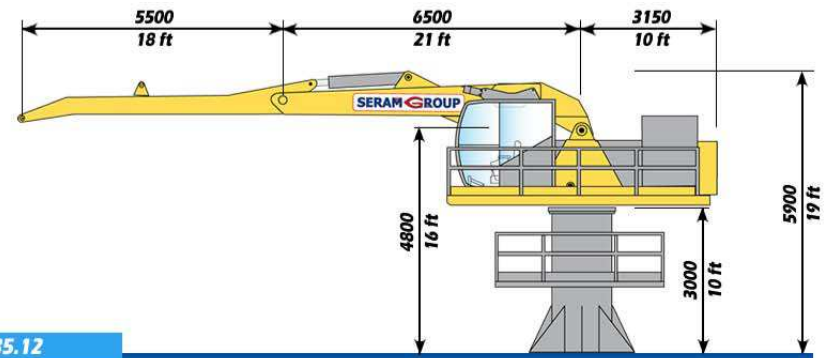
### Type of supports



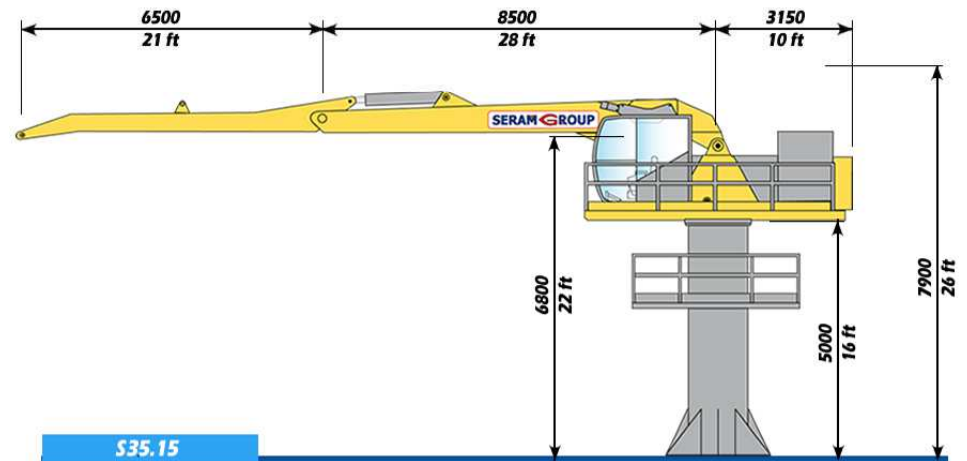
Fixed support (F)



Free Standing (AS)



S35.12



S35.15

# S35

S35.12 / S35.15



Your dealer:

## SERAM

SERAM SA

817 boulevard Marius Berliet - 66000 Perpignan (France)  
Tél : 04 68 61 02 28 - seramsa@seram.net

[WWW.SERAM.NET](http://WWW.SERAM.NET)