

# SERAM

LIFTING BALANCED  
CRANES

# S80

S80.20E / S80.25E



**110 kW**



**20 m / 25 m**  
**66 ft / 82 ft**



**64 t / 95 t**  
**71 USt / 105 USt**

*Courtesy of Crane.Market*

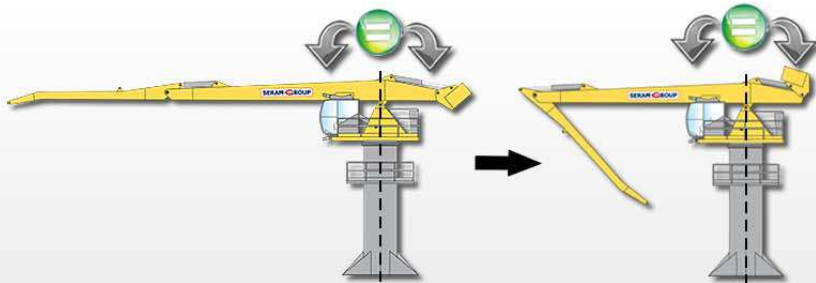
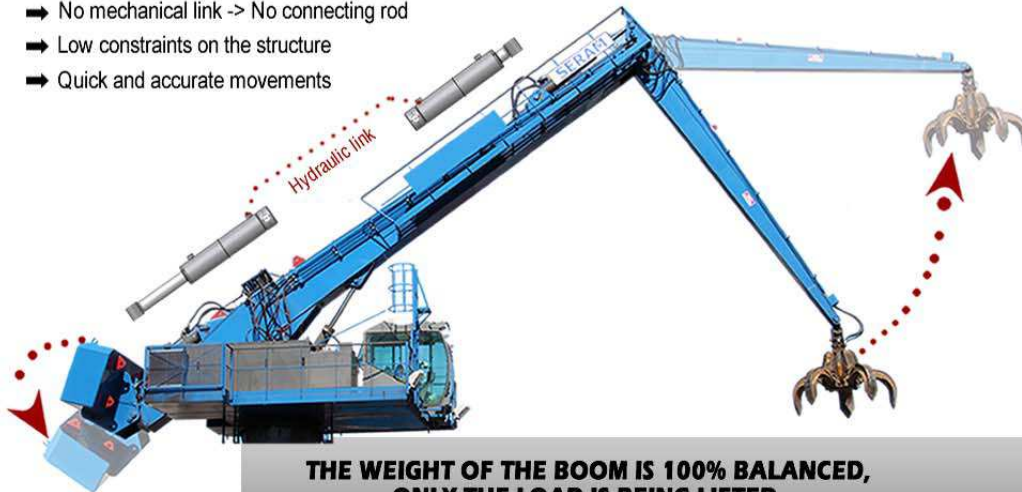


# THE SERAM HYDRAULIC BALANCING THE EASY AND EFFICIENT SOLUTION

**S80**  
S80.20E / S80.25E

The SERAM crane is the **only** balanced crane **by hydraulic system**

- No mechanical link -> No connecting rod
- Low constraints on the structure
- Quick and accurate movements



Enjoy the **unique advantages** of the balanced crane

## Unequaled operating costs

Up to **80% energy consumption** compared to a diesel conventional crane

Diesel Conventional Crane

- 50%

Electric Conventional Crane

- 80%

SERAM Electric Balanced Crane

## An exceptional lifetime of the hydraulic components

The average working pressure of a SERAM crane is **55% lower** than a conventional crane.

~320 bars  
~4650 psi

Conventional Crane

~140 bars  
~2030 psi

SERAM Balanced Crane

# THE SERAM TECHNOLOGY

## THE SERAM STRUCTURE THE RELIABILITY

World Reference...

FEM  
CLASSIFICATION\*

**A8M8**

The most performing  
grade on the market

+ of 2 Millions  
of lifting cycles

+ of 20 Years  
of operating

+ of 40 000 Hours  
of working operation

\*FEM: European Federation of Materials Handling

## THE SERAM MAINTENANCE THE SIMPLICITY

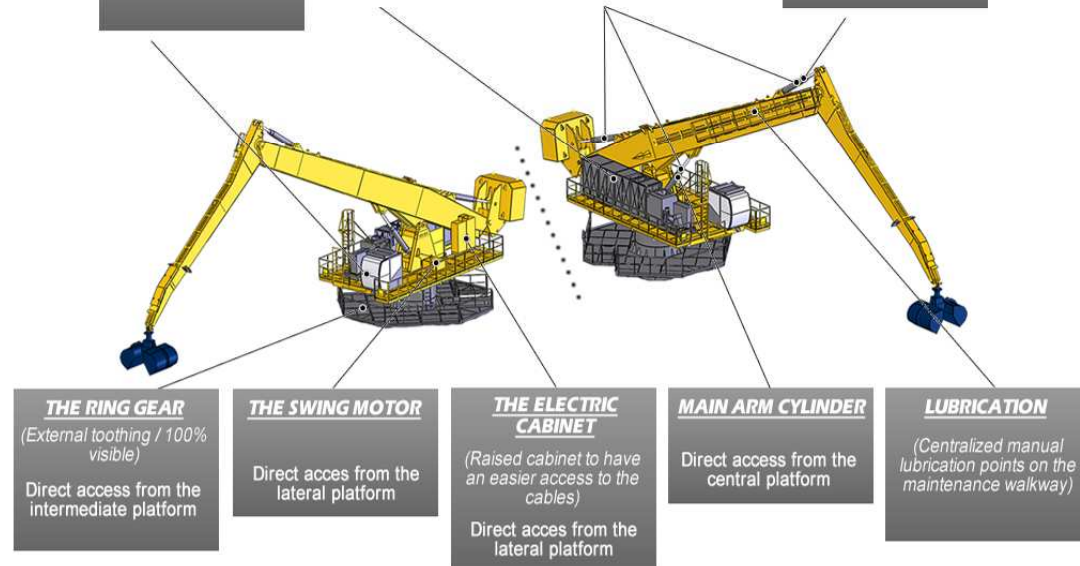
All the main components of the crane have an **easy access**

**The SERAM DATA**  
(System of assistance to diagnosis)  
Direct location on the dashboard of the cabin

**THE HYDRAULIC UNIT**  
Direct access from the lateral platform

**A SINGLE CYLINDER**  
(The 3 cylinders are identical and interchangeable)

**DIPPER ARM CYLINDER**  
Direct access from the maintenance walkway







# SPECIFICATIONS

## MAIN FEATURES

	S80.20E		S80.25E	
Power	80 t.m	26.9 USt.ft	80 t.m	26.9 USt.ft
Maximum horizontal outreach	20 m	66 ft	25 m	82 ft
Length of the main arm	11.5 m	38 ft	14 m	46 ft
Length of the dipper arm	8.5 m	28 ft	11 m	36 ft

## ELECTRIC MOTOR

Power	110 kW (400 volts - 50 hertz) / (480 volts - 60 hertz)
Type of starting	By variable frequency drive

## DIESEL GENERATOR

(For crawlers only)

Power	210 kVA
-------	---------

## HYDRAULIC SYSTEM

Type of the hydraulic system	Load Sensing
Hydraulic pumps	Regulating pumps with Load Sensing regulation
Pump flow for the movements	415 l/min / 110 gal/min
Average working pressure	140 Bars / 2030 psi
Pump flow for the rotation	155 l/min (dedicated closed circuit) / 41 gal/min
Maximum rotation speed	5 tr/min
Hydraulic tank	775 l / 205 gal
Cooling	Oil/Air heat exchanger

## WORKING EQUIPMENT

Hydraulic cylinders	250 x 140 x 1415 mm / 9.8 x 5.5 x 55.7 in
Swing motors	Radial piston engine with hydraulic safety brake
Ring gears	Crossed rollers with external toothing

## SUPPORT

<b>Fixed support (F)</b>	Support fixed on a concrete base	
Dimensions of the anchoring base	4000 x 4000 mm / 13.1 x 13.1 ft	
Forces applied on the ground	Fz= 768kN; Mx=1650kN.m* 172.7 kipf, 405659 lbf.yd	Fz= 770kN; Mx=1770kN.m* 173.1 kipf, 435162 lbf.yd
Total weight of the machine	64 t / 71 USt	68 t / 75 USt

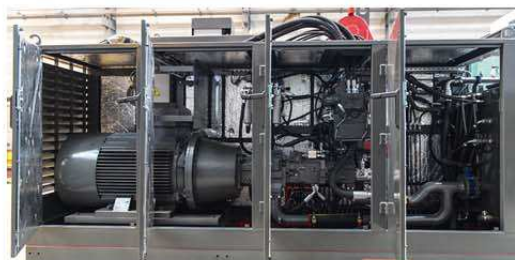
<b>Free Standing support (AS)</b>	Support on 4 shoes - No ground anchoring needed - Can be moved if needed	
Dimensions	Base: 5500 x 5500 mm / 18 x 18 ft 4 shoes: 1500 x 1500 mm / 4.9 x 4.9 ft	
Maximum forces applied on a shoe	Fz= 335kN* / 75.3 kipf	Fz= 430kN* / 96.7 kipf
Total weight of the machine	78 t / 86 USt	82 t / 90 USt

<b>Trolley on rails (C)</b>	Trolley equipped with 4 boggies, with 2 wheels each	
Dimensions	Wheel base: 5500 x 5500 mm / 18 x 18 ft Wheels of boggies Ø630mm / 2.1 ft	
Maximum forces applied on a bogie	Fz= 338kN* / 76 kipf	Fz= 435kN* / 97.8 kipf
Total weight of the machine	85 t / 94 USt	89 t / 98 USt

<b>Crawlers (Ch)</b>	Base: 5500 x 6000 mm / 18 x 19.7 ft Width of the crawlers: 600 mm / 2 ft Speed: 0 to 2 km/h / 0 to 1.22 mph	
Dimensions		
Presson on the ground	14.7 N/cm** / 21.3 psi	15.3 N/cm** / 22.2 psi
Total weight of the machine	106 t / 117 USt	110 t / 121 USt

## EQUIPMENTS

<b>ACCESS</b>	
Access ladder to the intermediate platform	●
Access stairway to the intermediate platform	Opt
Maintenance walkway	●
<b>HYDRAULIC UNIT</b>	
Lateral and upper openings allowing a total access to the hydraulic unit	●
Motor pump support equipped with an anti-vibration system - Noise mitigation	●
Enhanced cooling	Opt
Sound insulation	Opt
<b>HYDRAULIC EQUIPMENTS</b>	
Cylinders - Single piece chrome steel rods	●
Cylinders - equipped with safety valves and with load limiters	●
Automatic lubrication of the joints and cylinders	●
Automatic lubrication of the tracks and rollers of the gear	Opt
Automatic lubrication of the toothing of the gear	Opt



## OPERATING CABIN

<b>VISIBILITY</b>	
Panoramic windshield	●
2 Pantograph wipers + windshield washer	●
Adjustable sun shades	●
<b>COMFORT</b>	
Reversible air conditioning on the roof of the cabin	●
Additional fan heater	●
Heat-insulating laminated glass type Securit	●
Lateral polycarbonate glazing	Opt
Interior lighting	●
FM radio station / MP3 player	●
Briefcase	●
Hydrocarbon resistant, textured floor mat	●
Electrical outlets 220 volts / 110 volts	●
12V cigare lighter socket	Opt
Communication radio	Opt
Starting with breath test	Opt
Pressurization system of the cabin	Opt
Customer's logo on the arm	Opt



## ELECTRICAL EQUIPMENTS

Hydraulic collector - 4 power slip rings 3ph+t	●
Hydraulic collector - Additional switching ring	Opt
High Voltage / Low Voltage transformer	Opt
<b>OPTIONS</b>	
Handling tools (grapple, clamshell, etc)	Opt
Automatic Weighing system	Opt
Fire hose protection	Opt



## ERGONOMICS

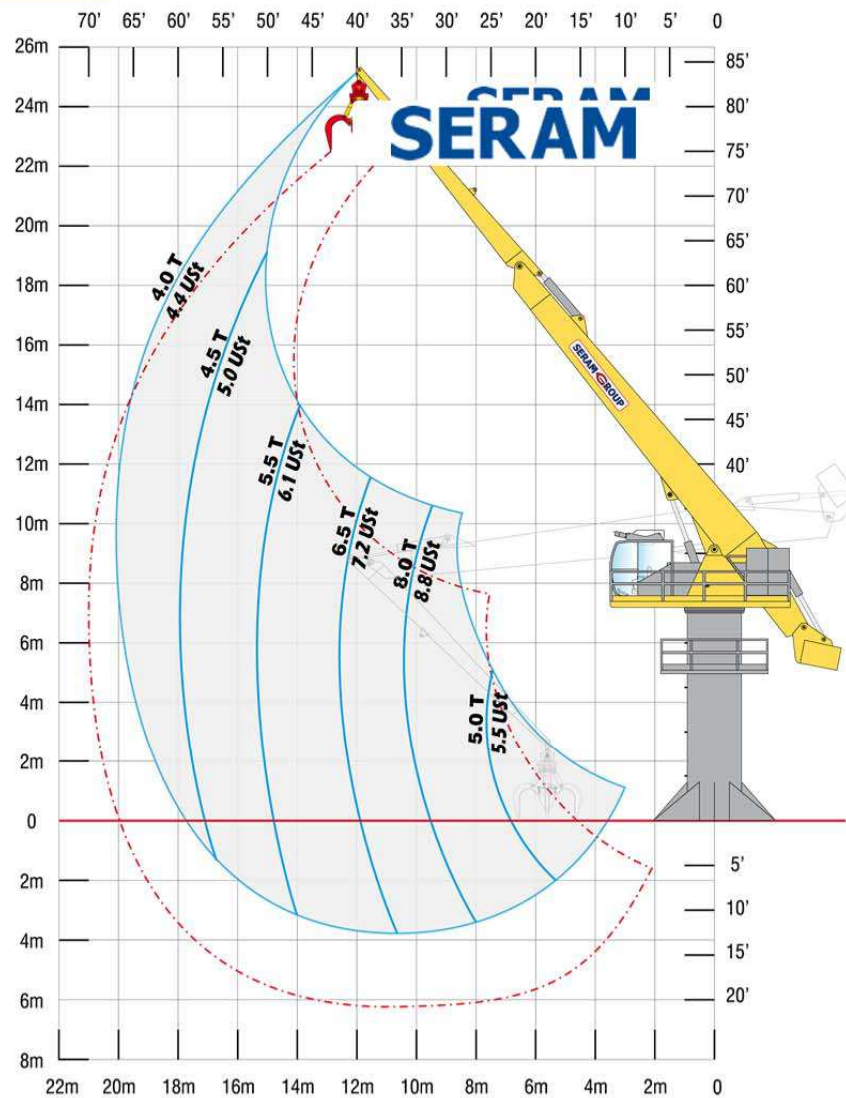
Ergonomic suspension seat	●
Adjustable backrest and armrests	●
Adjustable footrest	●
Operating and control panel of the crane	●
Hydraulic joysticks on the armrests	●
SERAM DATA : Control and defect recording module	●
SERAM DATA : GSM module for remote supervision	Opt
SERAM VISION : camera support	Opt
Anti-collision system: driving assistance	Opt
Cabin extension	Opt
Guard screen for the windshield	Opt
Lighting of the working area: 2 x 400W	●
Additional lighting	Opt





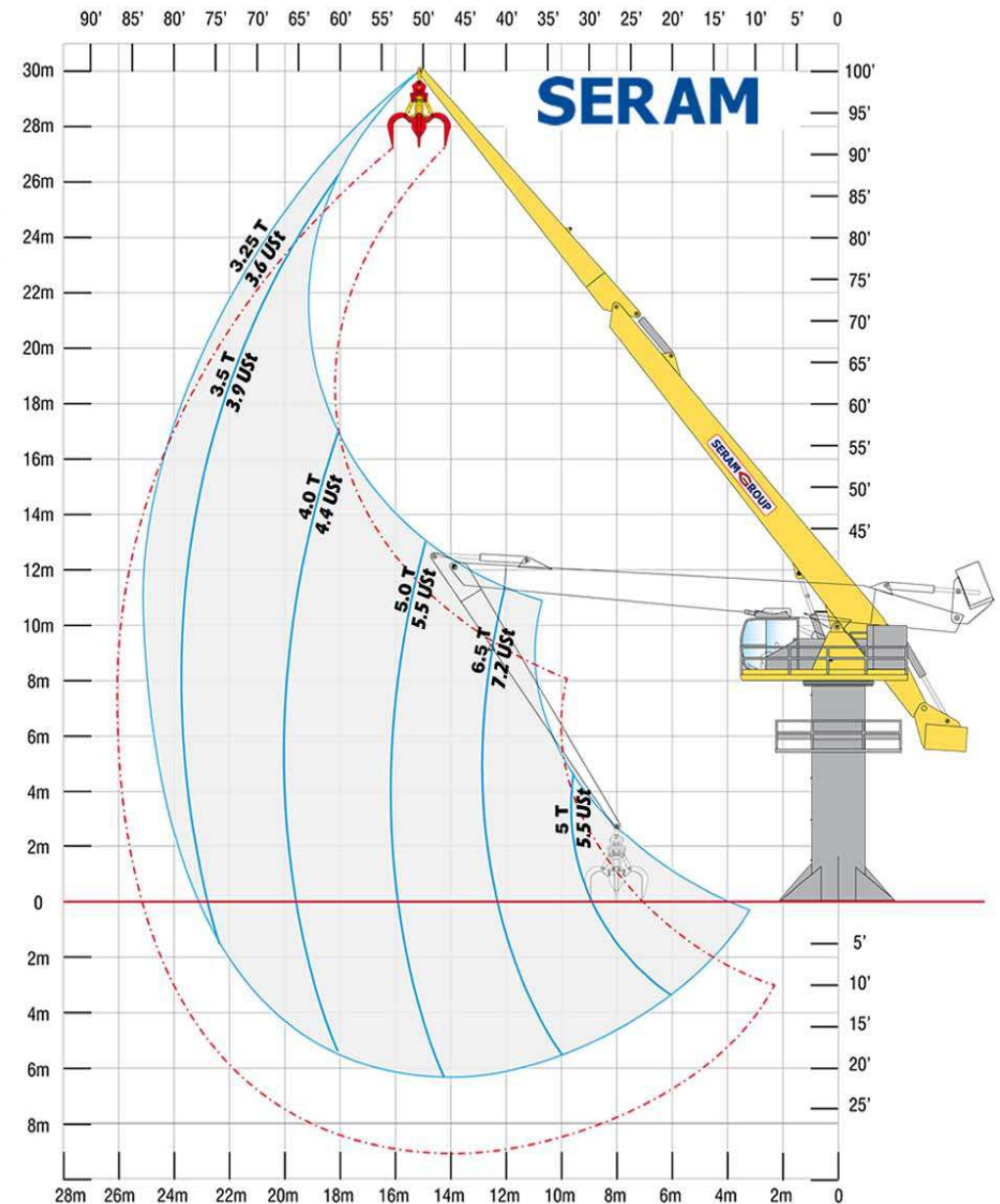
# ABAQUES DE CHARGES

S80.20E

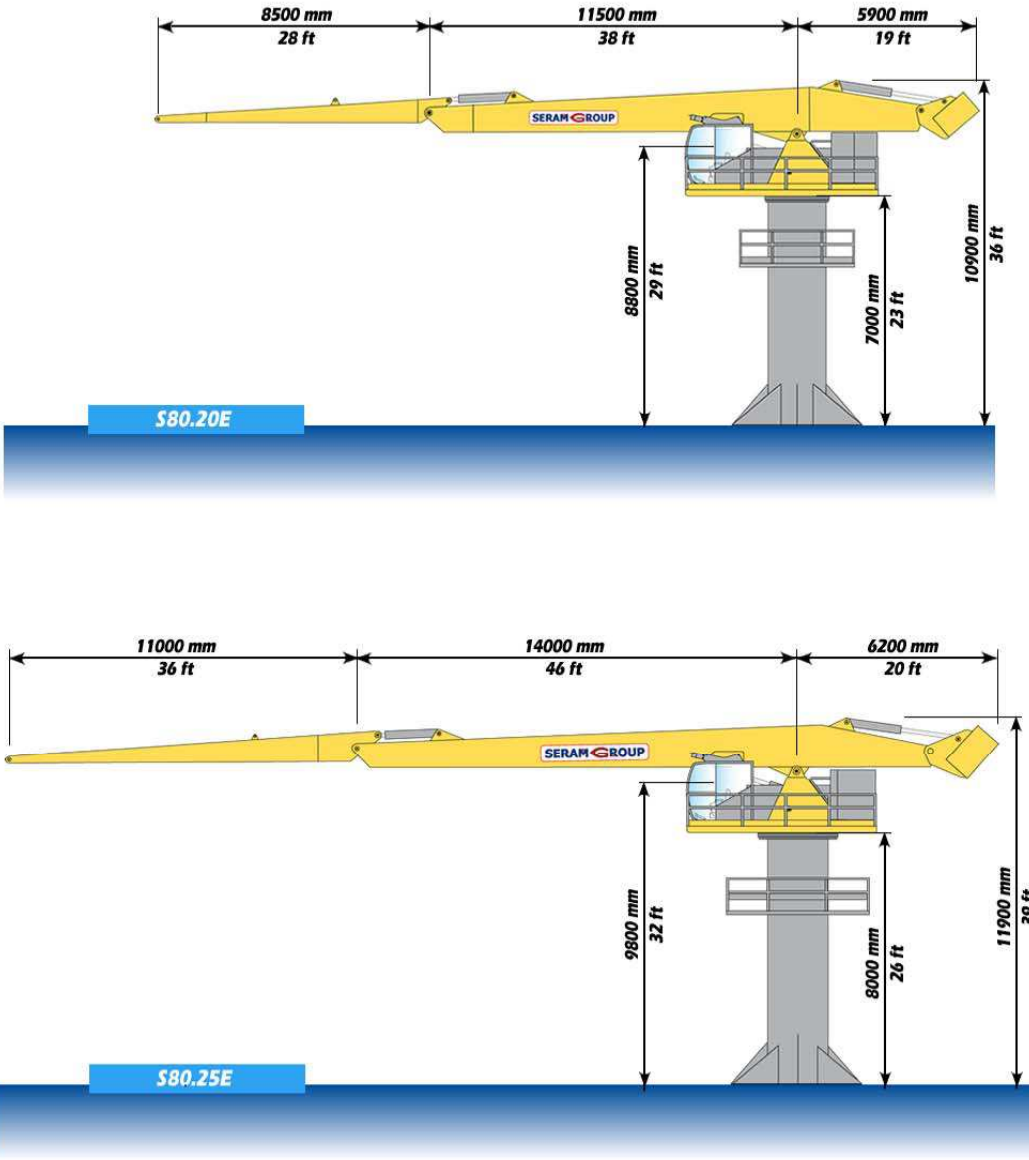
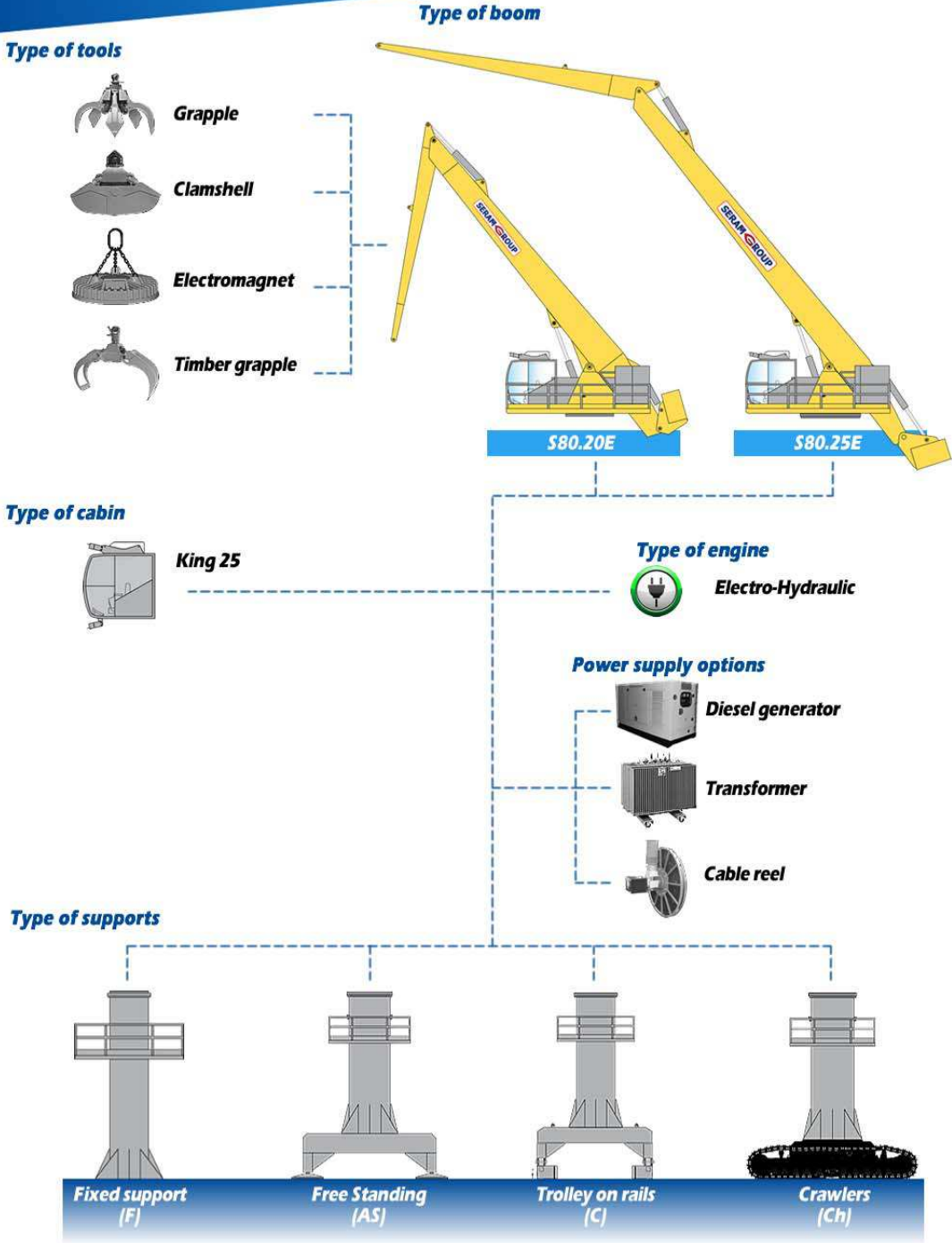


Load charts in Metric Tons and US Tons, valid at the end of the crane's boom without handling tool. According to the A8M8 classification of the FEM (European Federation of Materials Handling). The loading capacities are valid on a 360° working area.

S80.25E



Load charts in Metric Tons and US Tons, valid at the end of the crane's boom without handling tool. According to the A8M8 classification of the FEM (European Federation of Materials Handling). The loading capacities are valid on a 360° working area.





EXAMPLES

S80  
S80.20E / S80.25E





# S80

S80.20E / S80.25E



Your dealer:

**SERAM**  
**SERAM SA**

817 boulevard Marius Berliet - 66000 Perpignan (France)  
Tél : 04 68 61 02 28 - [seramsa@seram.net](mailto:seramsa@seram.net)

**[WWW.SERAM.NET](http://WWW.SERAM.NET)**