

SENEBOGEN[®] *Green Line*



206 HP



84,900 lbs.



Material Handling Machine **D-Series**

830M

Courtesy of Crane.Market

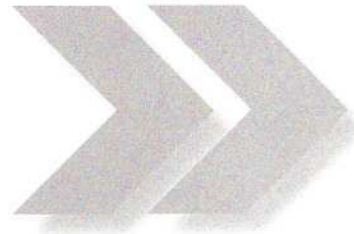


SENNEBOGEN Hydroclean
– This system, using a 2 micron filter, keeps the hydraulic circuit free from water and contamination. This extends the life of the hydraulic components and reduces machine maintenance and operating costs.

Cooling system with water radiator, turbo intercooler and hydraulic oil cooler side by side.

Ideal maintenance access.

Innovative Material Handling

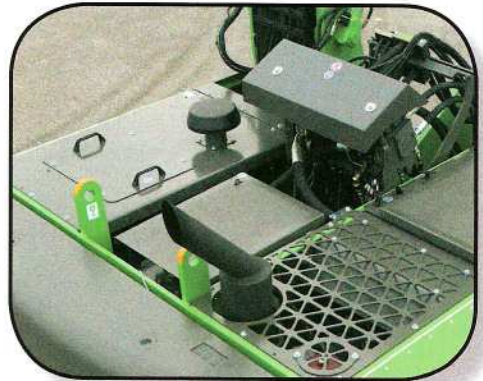


Hydraulic driven fan with flow optimized fan blades, reversible to keep the coolers free of debris.

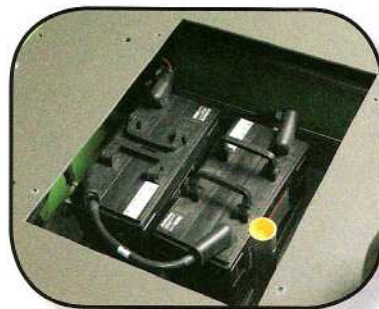




Easy and safe access to the uppercarriage.



Uppercarriage designed specifically for heavy lifting with continuous bearing plates from boom to counterweight.

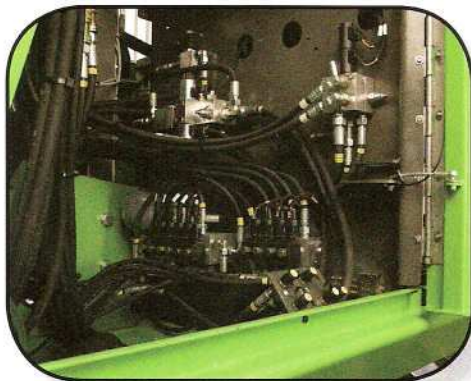
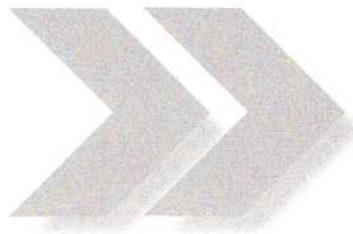


Excellent access to the batteries.



Access from the ground to hydraulic components, air filter, diesel tank, central lubrication, electric panel and battery disconnect switch.

Innovative Material Handling



Hydraulic valves mounted all together for easy maintenance.
Test ports in a centralized location for easy trouble shooting of the hydraulic system.



Stability increased with newly redesigned undercarriage.



Fuses and relays are positioned together for ease of maintenance. The battery disconnect switch and main fuses are easily accessible from the ground level.



Redesigned cab including a catwalk and fixed handrails, has enhanced cab access and cab safety.

Visibility is improved with the standard hydraulic elevating cab.

Sliding cab door – the ideal access, safe and comfortable.

Two hydraulic lifting cylinders enhance cab stability and safety.



Cooling efficiency is improved using wider fin spacing and coarse particle separation placed in front of radiator and coolers.



Centralized undercarriage greasing.





Hydraulic elevating cab with tinted safety glass.

Sliding cab door makes access to the cab very safe and comfortable.



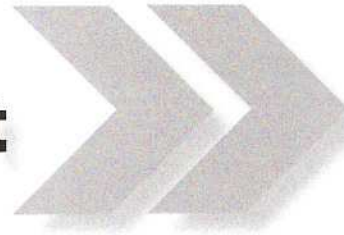
Larger cab with improved visibility and comfort.

Adjustable air vents.



Tilttable steering column, air suspended seat with lumbar support, fully adjustable to the joysticks as well as to the foot controls, seat heater.

Safety and Comfort first



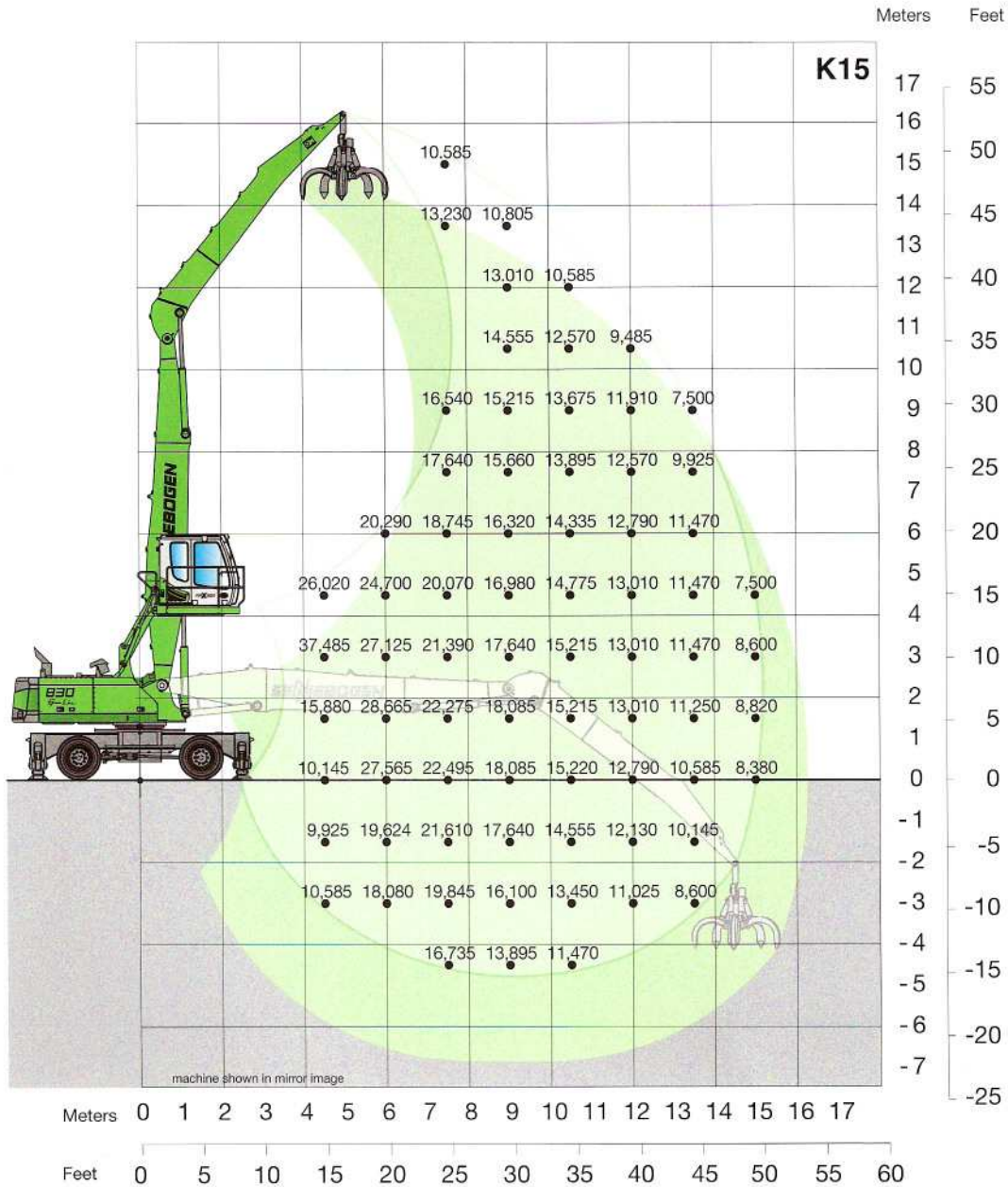
Standard catwalk with fixed railings guarantees safe access to the cab.



Fully automatic climate control – heating and air conditioning with temperature presetting, fresh / recirculated air flow modes, air filter and 8 adjustable air vents.



SENNEBOGEN diagnostic system – automatic monitoring, warning and storage of all essential operating conditions.



Working Equipment

K15 50'3" reach
boom 27'11"
stick 23'

Operator's Cab

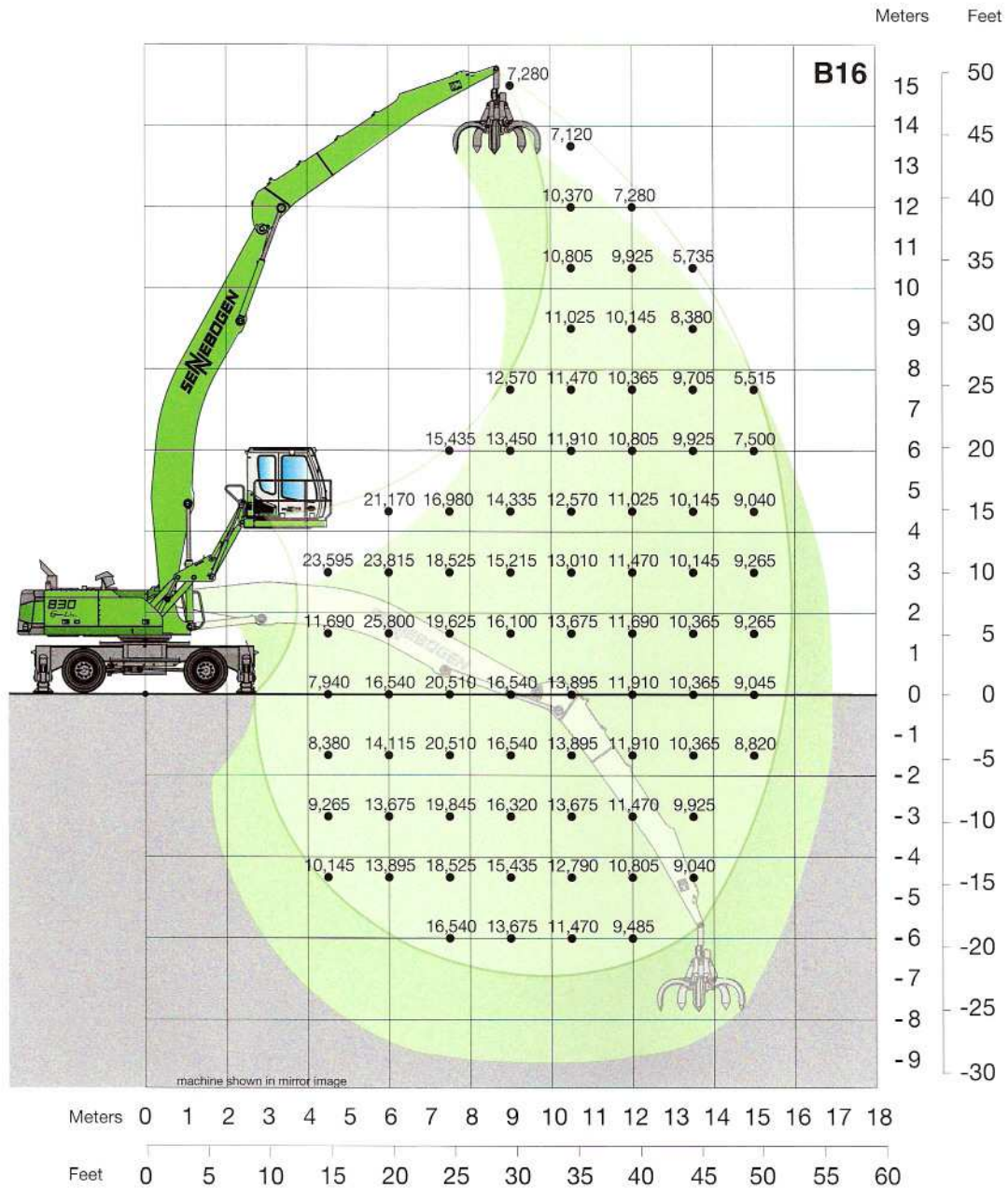
D270 maXCab
hydraulic elevating
eye level 18'5"

Undercarriage

MP30D with 4-point outriggers
Tires 8 x 12.00-20

Lift capacities are stated in pounds. Indicated loads are based on ISO 10567 and do not exceed 75% of tipping and 87% of hydraulic capacity. Machine on firm, level supporting surface. Loads valid for 360° with machine supported on outriggers. Lifting capacities do not include working attachments such as scrap grapples, magnets, etc. Their weights must be deducted from the numbers indicated in the lifting charts.

830M



Working Equipment

B16 52'6" reach
 boom 29'6"
 stick 23'

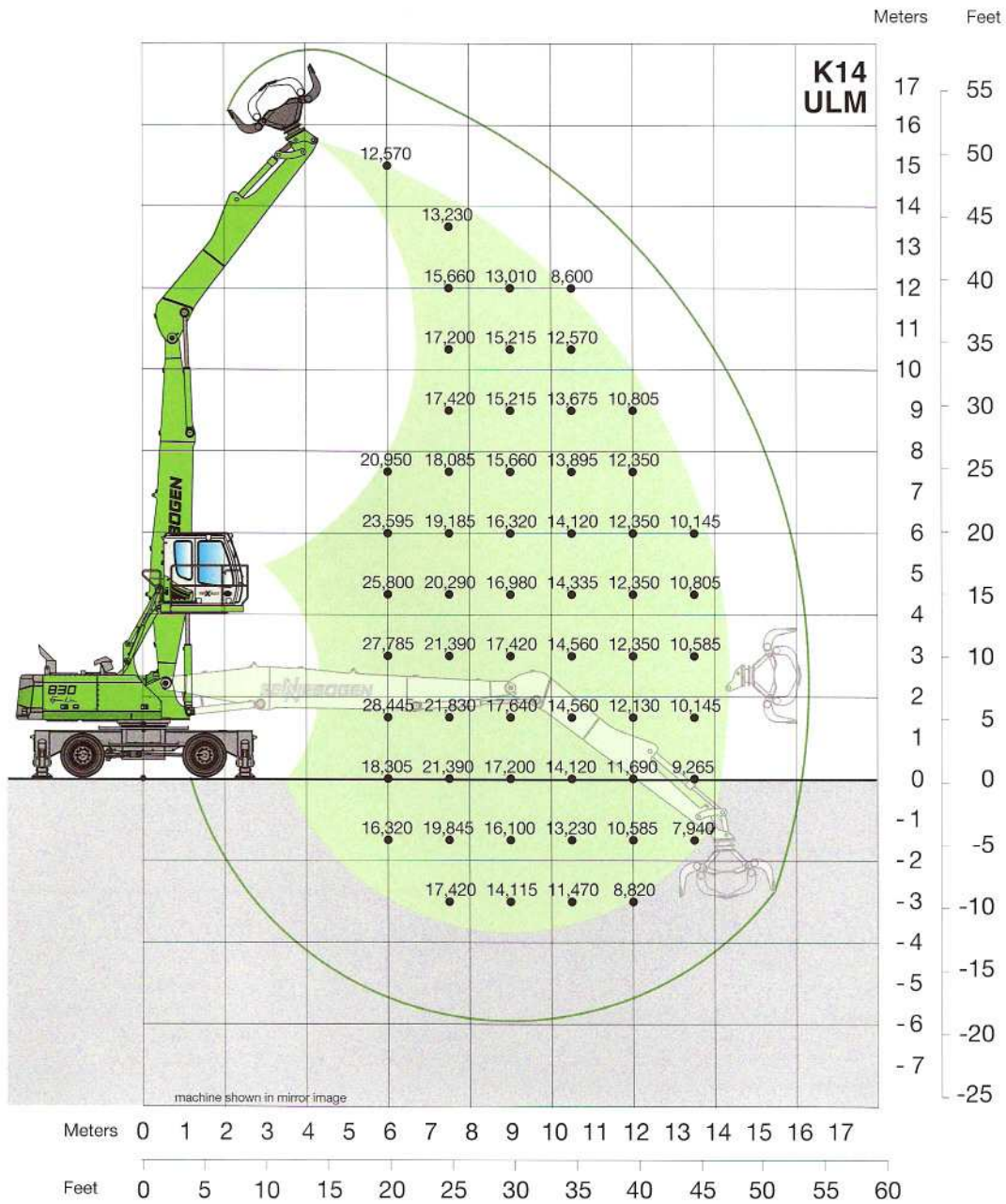
Operator's Cab

D 300/260 maXCab (optional)
 hydraulic elevating / forward moving
 eye level 19'7"

Undercarriage

MP30D with 4-point outriggers
 Tires 8 x 12.00-20

Lift capacities are stated in pounds. Indicated loads are based on ISO 10567 and do not exceed 75% of tipping and 87% of hydraulic capacity. Machine on firm, level supporting surface. Loads valid for 360° with machine supported on outriggers. Lifting capacities do not include working attachments such as scrap grapples, magnets, etc. Their weights must be deducted from the numbers indicated in the lifting charts.



Working Equipment

K14 ULM 47'7" reach
 boom 27'11"
 straight stick 19'8" with reversing
 mechanism

Operator's Cab

D270 maXCab
 hydraulic elevating
 eye level 18'5"

Undercarriage

MP30D with 4-point outriggers
 Tires 8 x 12.00-20

Lift capacities are stated in pounds. Indicated loads are based on ISO 10567 and do not exceed 75% of tipping and 87% of hydraulic capacity. Machine on firm, level supporting surface. Loads valid for 360° with machine supported on outriggers. Lifting capacities do not include working attachments such as scrap grapples, magnets, etc. Their weights must be deducted from the numbers indicated in the lifting charts.

Technical Specifications

Engine

Model:	Cummins QSB6.7
Type:	6 cylinder, inline
Cooling:	Water cooled
Rating (ISO 9249):	206 HP (151 kW) at 2,000 rpm
Fuel Tank:	130 gal
Air Filter:	Dual stage with prefilter

Electrical System

Operating Voltage:	24 V
Batteries:	2 x 12 V, 110 Ah
Light Package:	2 x uppercarriage 2 x cab (front)

Optional:

Light Package	2 x boom 2 x stick
---------------	-----------------------

Hydraulic System

Flow Rate:	140 gpm
Working Pressure:	4930 psi
Hydraulic Tank:	82 gal
Oil Filtration:	full flow return filters plus 2 micron SENNEBOGEN Hydroclean

Swing System

Drive:	Axial piston motor, planetary gear, multidisc brake
Swing Speed:	0-8 rpm
Swing Bearing:	Sealed ball bearing with internal teeth

Undercarriage

Drive:	Variable displacement hydraulic motor, dual stage power shift transmission, all wheel drive
Steering:	Steering wheel
Travel Speed:	1st 0 - 4.4 mph 2nd 0 - 12.5 mph
Axles:	Front axle: oscillating with hydraulic lock Rear axle: fixed
Brakes:	Multidisc in both axles
Tires:	8 x 12.00-20 solid rubber
Safety:	Travel alarm
Optional:	
Steering:	Joy stick & steering wheel
Tires:	8 x 12.00-20 pneumatic tires

Operator's Cab

Model:	maXCab with sliding door
Interior:	Fully automatic climate control Air suspended seat, heated with lumbar support, adjustable arm rests Adjustable steering wheel AM/FM radio with CD player SDS diagnostic system Safety lever for all controls Interior lightning Parallel windshield wiper and washer Sunshade for windshield and skylight

Optional:

Exterior:	FOPS protection guard Windshield guard Bullet proof glass
-----------	---

Cab System

Standard:	D270 maXCab Hydraulic elevating with two cylinders Eye level 18'5"
Optional:	D300/260 maXCab hydraulic elevating and forward moving Eye level 19'7" D150 maXCab Fix cab riser 5' Eye level 14'7"

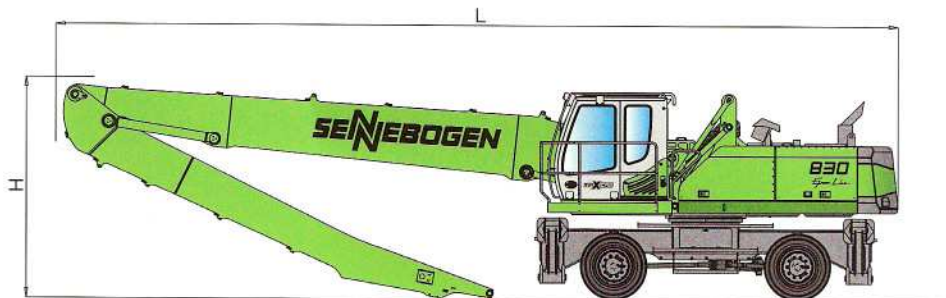
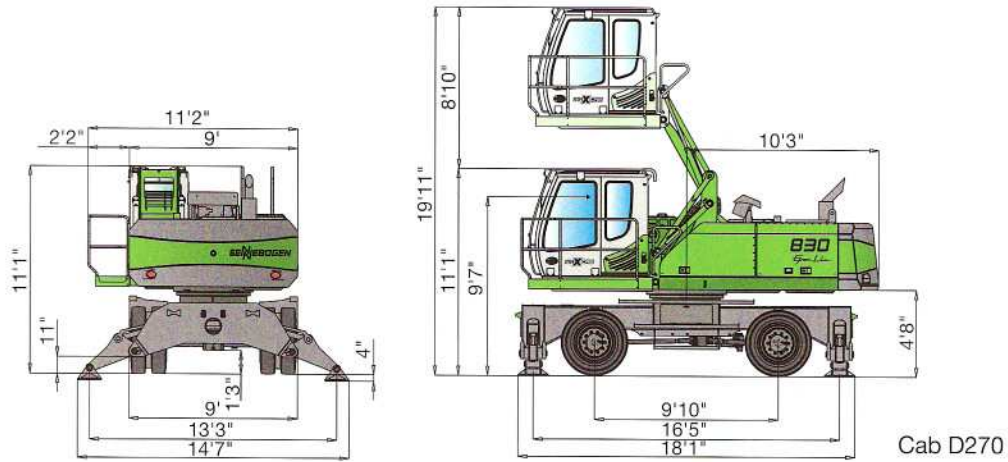
Magnet System

Drive:	Belt driven
Rating:	15/ (20 kW optional)
Controller:	Hubbell
Generator:	Baldor

Attachments

- 0.75, 1.0 and 1.25 cu. yds. scrap grapple with rotation, 4 or 5 tine, open, semi-closed or closed, depending on the weight of the grapple and operating reach
- 0.75 to 2.0 cu. yds. clamshell grapple with rotation, depending on the material density, weight of the grapple and operating reach
- Log grapple available in different sizes and configurations depending on material being handled
- Contact **SENNEBOGEN** for approval of the attachment before operating the machine
- Always refer to the lifting capacities on the chart before installing any attachment

Machine Dimensions



	Boom	Stick	Transport length (L)	Transport height (H)
K15	27'11"	23'	40'10"	11'3"
B16	29'6"	23'	44'	11'8"
K14 ULM	27'11"	19'8"	40'10"	11'4"

830_M

make your competition ...

“Green With Envy”



Under our policy of continuous improvement, we reserve the right to change specifications and design without prior notice. The illustrations shown may include optional equipment.

SENNEBOGEN LLC

2835 Jeff Adams Drive
Charlotte, NC 28206

Phone: +1 (877) 309-0099 (Toll Free)
Fax: +1 (704) 347-8894
E-Mail: sales@sennbogenllc.com

www.sennbogen-na.com

