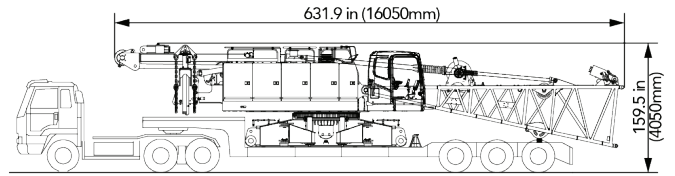
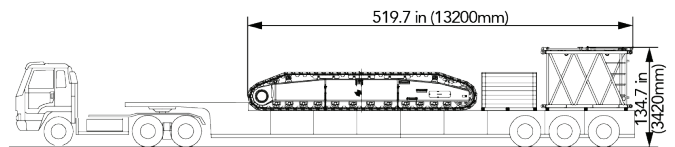


SCA1350A | TRANSPORT PLAN

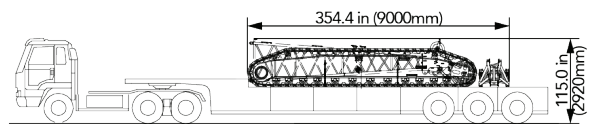
Transport cart 1	
Components included	<ul style="list-style-type: none"> Basic machine (4 winches, carbody, outrigger, A-frame, all wire ropes), boom base
Transport weight	<ul style="list-style-type: none"> 88.2Klb (40t)



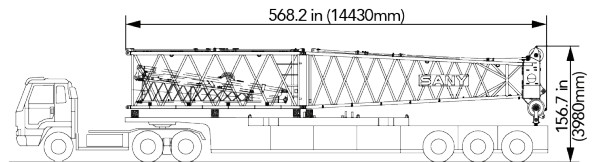
Transport cart 2	
Components included	<ul style="list-style-type: none"> Crawler frame: 33.1Klb (15t) 3m(9.9ft) boom insert: 1.4Klb (0.62t) Packing case: 2.2Klb (1t)
Transport weight	<ul style="list-style-type: none"> 36.7Klb (16.62t)



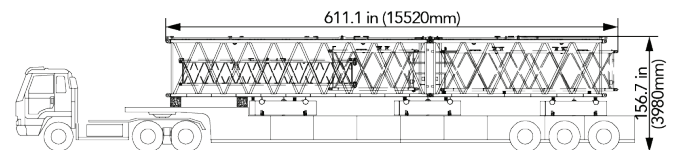
Transport cart 3	
Components included	<ul style="list-style-type: none"> Crawler frame: 33.1Klb (15t) Luffing jib top: 2.6Klb (1.17t) Extension boom: 0.7Klb(0.3t)
Transport weight	<ul style="list-style-type: none"> 36.3Klb (16.47t)



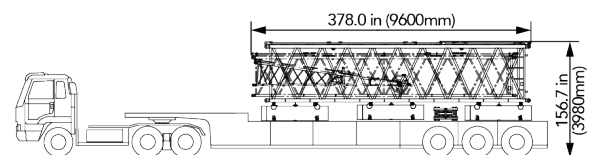
Transport cart 4	
Components included	<ul style="list-style-type: none"> Counterweight tray: 26.5Klb (12t) Boom top: 5.7Klb (2.55t) 6m(20ft) boom insert & Fixed jib base: 4.2Klb (1.88t)
Transport weight	<ul style="list-style-type: none"> 36.3Klb (16.43t)



Transport cart 5	
Components included	<ul style="list-style-type: none"> Counterweight*3: 34.8Klb (15.75t) 9m(30ft) boom insert& 3m(10ft) luffing jib insert& 6m(20ft) fixed jib insert: 4.7Klb (2.13t) 6m(20ft) boom insert& 6m(20ft) luffing jib insert: 3.4Klb (1.53t)
Transport weight	<ul style="list-style-type: none"> 42.8Klb (19.41t)



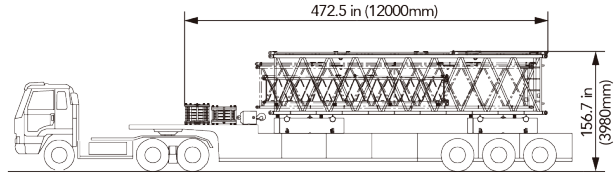
Transport cart 6	
Components included	<ul style="list-style-type: none"> Counterweight*3: 34.8Klb (15.75t) 9m(30ft) boom insert:+9m(30ft) luffing jib insert+ Fixed jib top: 6.0Klb (2.72t) 35T lifting hook: 2.5Klb (1.11t)
Transport weight	<ul style="list-style-type: none"> 43.2Klb (19.58t)



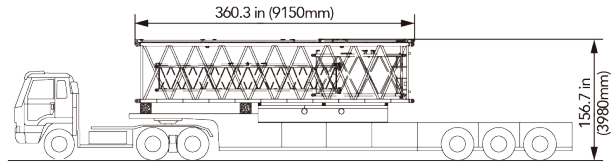
In the interest of continual equipment development, SANY America, Inc. reserves the right to change these specifications at any time without prior notification.

SCA1350A | TRANSPORT PLAN

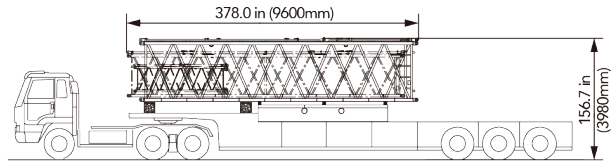
Transport cart 7	
Components included	<ul style="list-style-type: none"> Counterweight*2: 23.2Klb (10.5t) 9m(30ft) boom insert+9m(30ft) luffing jib insert+ 6m(20ft) fixed jib insert: 5.6Klb (2.53t) 135T lifting hook: 4.5Klb(2.04t) 80T lifting hook: 4.3Klb(1.94t) 13.5T ball hook: 1.0Klb (0.45t)
Transport weight	<ul style="list-style-type: none"> 38.5Klb(17.46t)



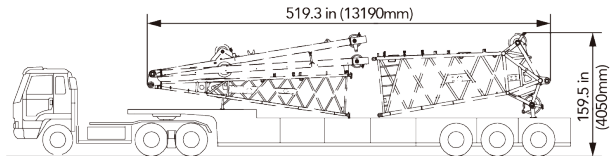
Transport cart 8	
Components included	<ul style="list-style-type: none"> Carbody counterweight: 22.1Klb (10t) 9m(30ft) boom insert+3m(10ft) luffing jib insert+ 6m(20ft) fixed jib insert: 4.7Klb (2.13t)
Transport weight	<ul style="list-style-type: none"> 26.8Klb (12.13t)



Transport cart 9	
Components included	<ul style="list-style-type: none"> Carbody counterweight: 22.1Klb (10t) 9m(30ft) boom insert+9m(30ft) luffing jib insert+ 3m(10ft) fixed jib insert: 5.3Klb (2.39t)
Transport weight	<ul style="list-style-type: none"> 27.3Klb (12.39t)



Transport cart 10	
Components included	<ul style="list-style-type: none"> Luffing jib base with struts : 6.9Klb (3.13t) Boom top(for LJ only): 4.2Klb (1.9t)
Transport weight	<ul style="list-style-type: none"> 11.1Klb (5.03t)



In the interest of continual equipment development, SANY America, Inc. reserves the right to change these specifications at any time without prior notification.

MORE THAN MACHINES

sanyamerica.com