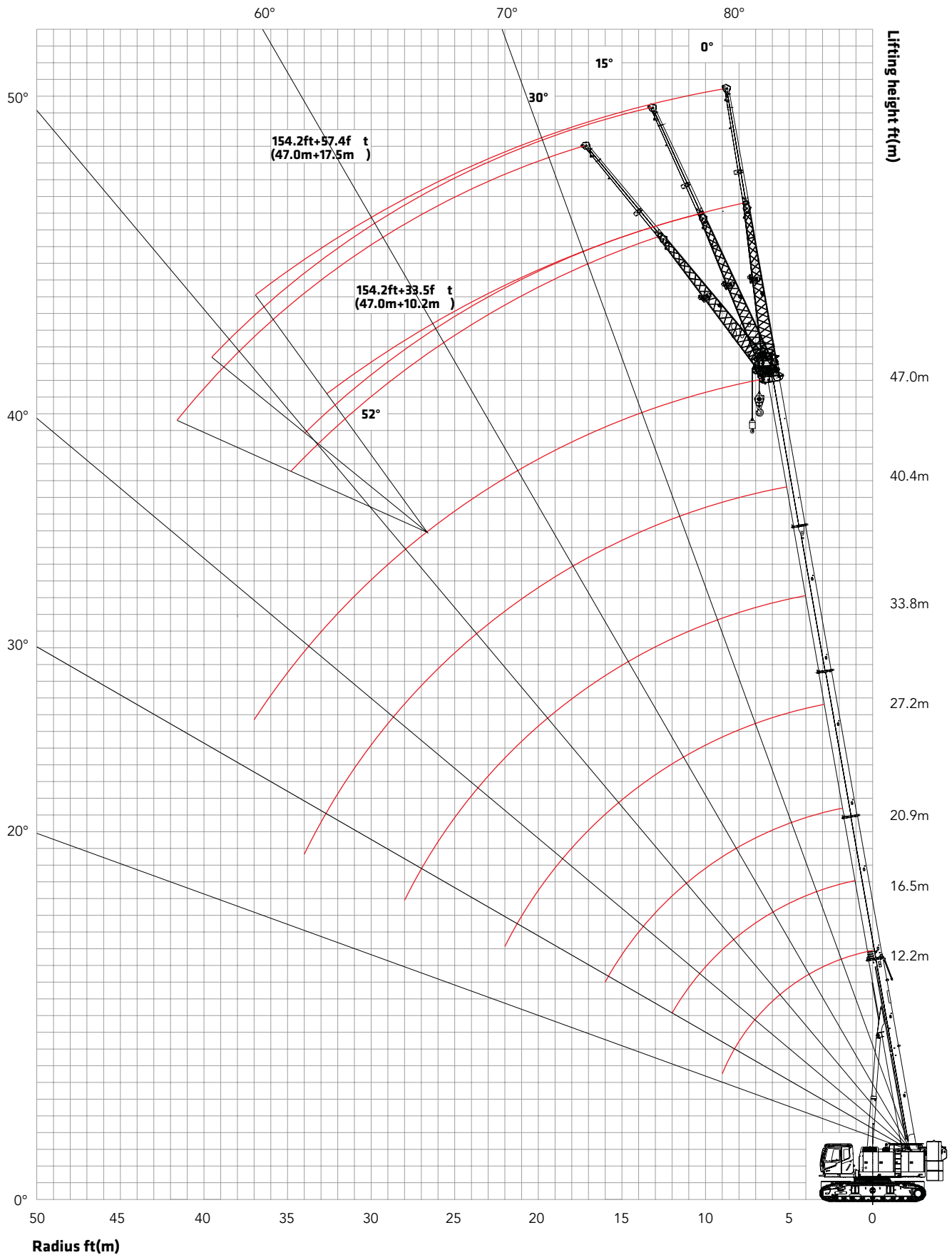


# SCA800TB | WORKING RADIUS IN H CONFIGURATION



In the interest of continual equipment development, SANY America, Inc. reserves the right to change these specifications at any time without prior notification.

# SCA800TB | LOAD CHART OF H CONFIG. | IMPERIAL

Radius(ft)	Rear Counterweight 57.3Klb, Carbody Counterweight 13.2Klb							Radius(ft)
	40	54.1	68.6	89.2	110.9	132.5	154.2	
10	176.4	141						10
12	158.2	132.9						12
15	141	130.2	93.3					15
20	109.1	102	85.3	65.1	52.1	43.4		20
25	80.7	80.3	67.3	58.2	45.6	38		25
30	58.2	57.7	57.1	52.7	44.5	34.7	25.8	30
35		42.3	40.8	42.5	35.7	30	23.6	35
40		36.2	33.8	38	32.5	27.1	23	40
45			25.6	29.3	27.6	25.8	22.5	45
50			19.4	22.5	23.4	22	21.4	50
55				19.1	20	19.9	18.7	55
60				17.4	18.2	19.3	17.6	60
65				14.1	15.2	16.1	16	65
70				11.5	12.6	13.4	13.7	70
75					10.1	11	11.9	75
80					8.9	9.6	10.6	80
85					8.4	9	10.1	85
90					6.8	7.5	8.6	90
95						6.5	7.7	95
100						6.1	7.4	100
105						5.1	6.2	105
110							5.3	110
120							3.9	120
Parts of line	11	10	8	6	5	4	3	Parts of line
Min. Angle						26°	33°	Min. Angle
Telescoping Status ( % )								
Telescoping Cylinder	I	I	I	I II	I II	I II	I II	Telescoping Cylinder
Section 2	0	50	100	100	100	100	100	Section 2
Section 3	0	0	0	25	50	75	100	Section 3
Section 4	0	0	0	25	50	75	100	Section 4
Section 5	0	0	0	25	50	75	100	Section 5

In the interest of continual equipment development, SANY America, Inc. reserves the right to change these specifications at any time without prior notification. Refer to machine's load chart. Capacities are in Klb.