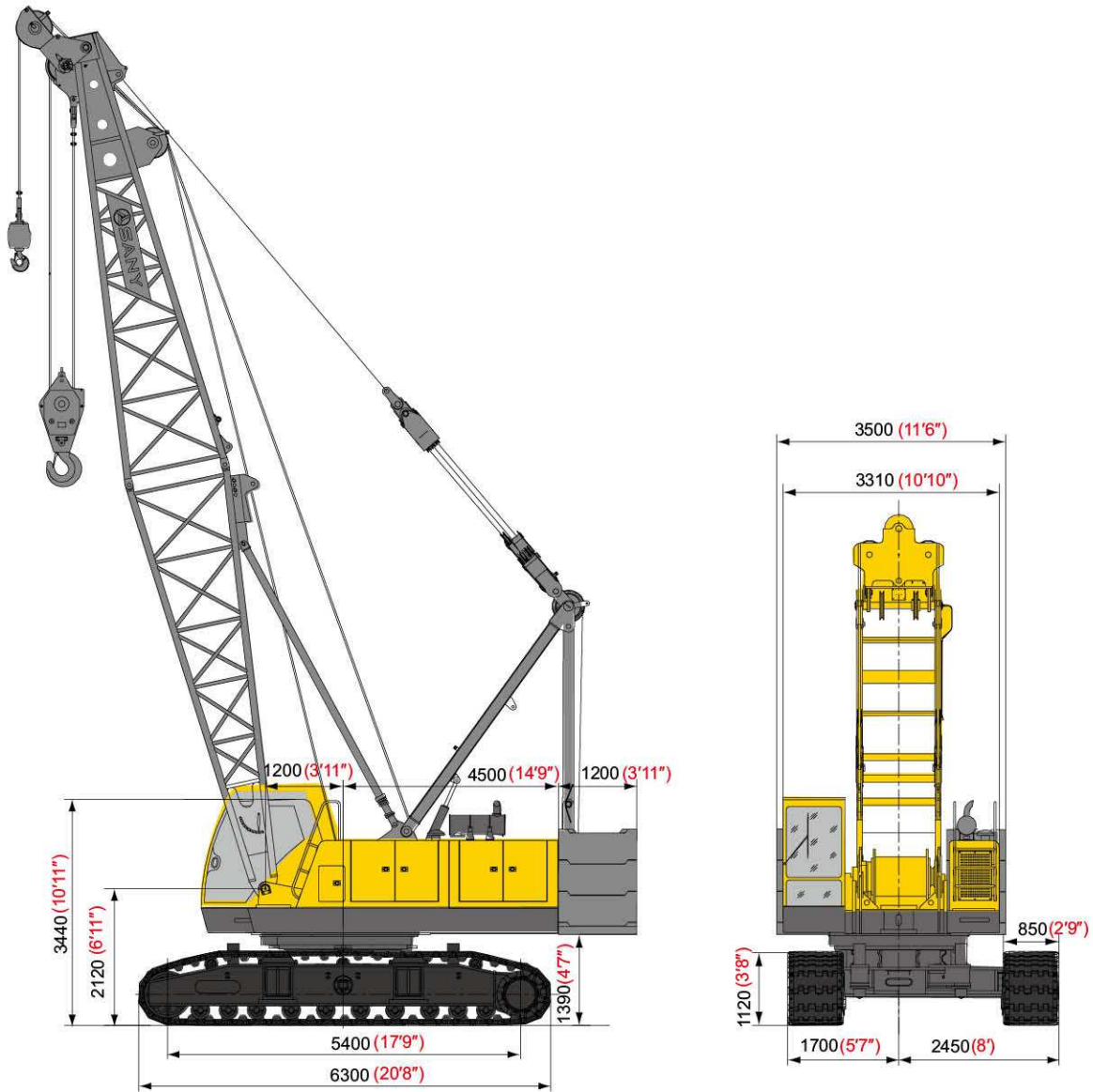


Outline Dimensions

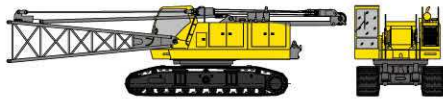


Outline Dimensions of SCC800C Hydraulic Crawler Crane

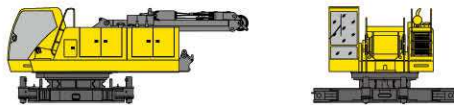
Performance Data

Main Technical Data of SCC800C Hydraulic Crawler Crane			
Performance Index		Unit	Data
H Operating Condition	Max. Rated Load	t (Ust)	80 (88.2)
	Boom Length	m (ft)	13~58 (42' 8" ~190' 3")
	Boom Luffing Angle		30° ~ 80°
FJ Operating Condition	Full Extensional Boom+ Full Extensional Jib	m (ft)	49+18 (160' 9" +59' 1")
	Jib Offset Angle		15° , 30°
Working Speed	Wire Speed of Main and Aux. Hoisting Winch (at Third Layer)	m/min (fpm)	0~110 (0~361fpm)
	Wire Speed of Luffing Winch (at Fifth Layer)	m/min (fpm)	0~73 (0~240)
	Slewing Speed	rpm	0~2.25
	Traveling Speed	km/h (mph)	0~1.1/0~2.0 (0~0.68/0~1.24)
	Gradeability		30%
Engine	Output Power/Rated Rotational Speed Rated Rotational Speed	kW/rpm (hp/rpm)	183/2000(Tier 3) 186/ 2200 (Tier 2) 246/2000(Tier 3) 250/2200(Tier 2)
Transport Data	Max. Transport Weight of Single Part (with Crawler)	kg (lb)	46,500 (102,500)
	Transport Dimensions (Length x Width x Height) (With Boom Base)	mm (ft)	13320 x 3400 x 3340 (43' 8" x 11' 2" x 10' 11")
	Average Ground Pressure(Basic Boom)	MPa (psi)	0.076 (11)

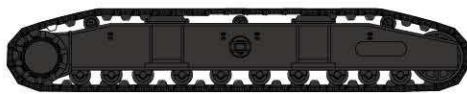
Transport Dimensions



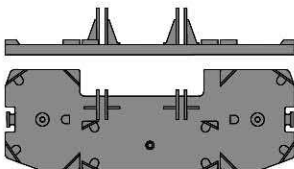
Basic Machine (with crawlers)		×1
Length	13.32m	43' 8"
Width	3.40m	11' 2"
Height	3.34m	10' 11"
Weight	46500kg	102513lb



Basic Machine (without crawlers)		×1
Length	7.65m	25' 1"
Width	3.31m	10' 10"
Height	3.07m	10' 1"
Weight	27500kg	60626lb



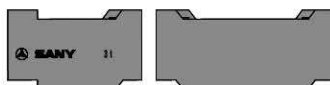
Crawler Assembly		×2
Length	6.30m	20' 8"
Width	1.00m	3' 3"
Height	1.12m	3' 8"
Weight	9600kg	21164lb



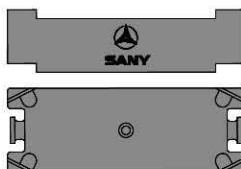
Counterweight Tray		×1
Length	3.50m	11' 6"
Width	1.20m	3' 11"
Height	0.56m	1' 10"
Weight	3600kg	7937lb



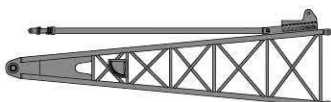
Left Counterweight Block		×3
Length	1.2m	3' 11"
Width	0.9m	2' 11"
Height	0.47m	1' 7"
Weight	3100kg	6834lb



Right Counterweight Block		×3
Length	1.20m	3' 11"
Width	0.90m	2' 11"
Height	0.47m	1' 7"
Weight	3100kg	6834lb



Central Counterweight Block		×3
Length	1.64m	5' 5"
Width	0.58m	1' 11"
Height	0.41m	1' 4"
Weight	2500kg	5511lb

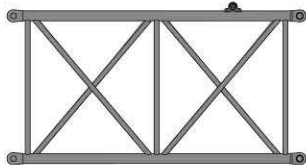


Boom Base		×1
Length	6.728m	22' 1"
Width	1.626m	5' 4"
Height	1.89m	6' 2"
Weight	1600kg	3527lb

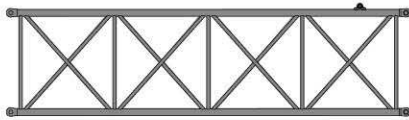
Transport Dimensions



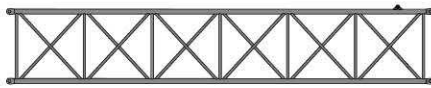
Boom Tip		× 1
Length	6.98m	22' 11"
Width	1.63m	5' 4"
Height	1.79m	5' 10"
Weight	1650kg	3638lb



3m(9' 10'') Boom Insert		× 1
Length	3.14m	10' 4"
Width	1.63m	5' 4"
Height	1.6m	5' 3"
Weight	400kg	882lb



6m(19' 8'') Boom Insert B		× 1
Length	6.14m	20' 2"
Width	1.63m	5' 4"
Height	1.60m	5' 3"
Weight	750kg	1653lb



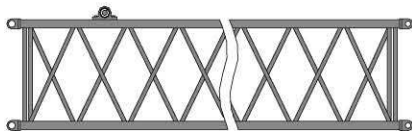
9m(29' 6'') Boom Insert B		× 4
Length	9.14m	29' 12"
Width	1.63m	5' 4"
Height	1.60m	5' 3"
Weight	1050kg	2315lb



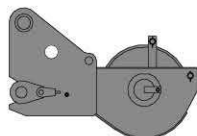
Jib Tip		× 1
Length	4.875m	15' 12"
Width	0.87m	2' 10"
Height	0.77m	2' 6"
Weight	350kg	772lb



Jib Base		× 1
Length	4.69m	15' 5"
Width	0.89m	2' 11"
Height	0.77m	2' 6"
Weight	300kg	661lb

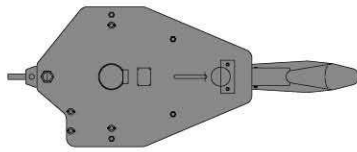


4.5m(14' 9'') Jib Insert		× 2
Length	4.57m	14' 12"
Width	0.87m	2' 10"
Height	0.77m	2' 6"
Weight	200kg	441lb

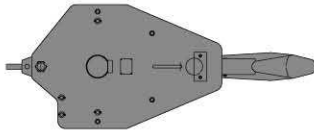


Extension Jib		× 1
Length	1.15m	3' 9"
Width	0.79m	2' 7"
Height	0.97m	3' 2"
Weight	150kg	331lb

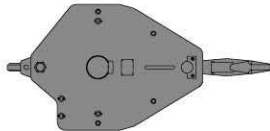
Transport Dimensions



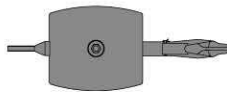
80t (88USSt) Hook Block		×1
Length	2.00m	6' 7"
Width	0.50m	1' 8"
Height	0.80m	2' 7"
Weight	1250kg	2756lb



50t (55USSt) Hook Block		×1
Length	1.80m	5' 11"
Width	0.45m	1' 6"
Height	0.80m	2' 7"
Weight	750kg	1653lb



25t (27.6USSt) Hook Block		×1
Length	1.60m	5' 3"
Width	0.42m	1' 5"
Height	0.80m	2' 7"
Weight	550kg	1213lb



9t (9.9USSt) Ball Hook		×1
Length	0.95m	3' 1"
Width	0.36m	1' 2"
Height	0.36m	1' 2"
Weight	250kg	551lb

Notes:

1.The transport dimensions of main parts are not drawn to proportion. The dimensions in the sketches are design values excluding packages.

1.The weight is design value and there may be difference caused during manufacturing.

Specifications



Upperworks



Engine

The imported Cummins Model QSC8.3 diesel (Tier 3), inline 6-cylinders, water-cooled, electronic fuel injecting, turbo-charging, rated at 183kW(245hp) at 2000rpm. The maximum torque output is 1268N•m(935lb•ft), at 1400rpm.

Air Filtering: Two-stage air filtering system including an air pre-filter and an air filter.

Fuel tank capacity: 400L (106gal.).

Optional, imported Cummins Model 6CTAA-250 diesel (Tier 2), rated at 186kW (250hp) /2200rpm, maximum torque output is 1219N•m(899lb•ft), at 1300 rpm.



Electrical Controlling System

The electrical controlling system is composed of controllers, displays, sensors etc, which are connected by electric wires.

Data transmission between controllers, displays, engine, load moment limiter, and remote controlling termination is achieved by CAN bus technology, enabling high reliability for the system.

Information including working parameters (e.g. rotational speed of the engine, fuel volume, engine oil pressure, servo pressure, wind speed, engine working hours) and working state (e.g. main/aux. winch lockup, main luffing winch lockup, slewing lockup) is shown on the display.



Hydraulic System

The Hydraulic system configurations: Rexroth (R) or Kawasaki (K), both can achieve inching control.

Rexroth pump system: the main pump is controlled by LAO, which is summation power adjustment plus electronic power adjustment override control, enabling load-sensitive function.

Rexroth main valve: integral multi-port valve, which can achieve LUDV, i.e. Load Independent Flow Distribution. If the flow in the system is inadequate, i.e. the pump unable to supply adequate flow for actuator components acting at required speed, then each actuator component will reduce its speed in proportion.

Independent closed slewing system.

Kawasaki pump system: the main pump is controlled by positive flow plus summation power. The displacement

of main pump is proportional to control signal. When the summation output pressure of dual pump reaches the pre-set value, the displacement changing mechanism began to act synchronically and reduce the pump displacement, keeping the summation output power of the pump constant. In addition, when the slewing pump and the main pump working at the same time, the cross power control can be achieved, avoiding the engine from working overloaded.

Kawasaki main valve: open-centered control valve unloaded at neutral position, which is hydraulic pilot proportional controlled. Spool of each valve is connected in series, achieving compound actions at light load. It is optional to install pressure compensated valve at the upstream of each spool, which can reduce the variation in load flow characteristics caused by change of load, enabling good adaptability for the operator.

Independent open slewing system

Oil cooler: oil radiator directly driven by hydraulic motor.

Hydraulic oil tank capacity: 320L(84.5 gal.).



Main & Auxiliary Hoisting Mechanism

The main winch drum and the auxiliary winch drum are separately driven by winch motors through gearboxes. Operate the hoisting control levers to achieve rolling in two directions, i.e. hoisting and lowering the hook block.

Brake: normally closed, built-in, wet, blade-type, spring loaded; spring-applied and hydraulically-released.

Winch drum: using fold line groove winch drum to avoid entangling during winding the ropes into multi layers.

Main & Aux. Hoisting Mechanism	Outermost Speed of Wire Rope	0 ~ 110m/min (0 ~ 361fpm)
	Wire Rope Diameter	Φ24mm(15/16")
	Wire Rope Length of Main/Aux. Winch	240m(787' 5") /180m(590'7")
	Rated Single-line Pull	9,200kg(20,300lb)



Luffing Mechanism

The luffing winch drum is directly driven by luffing motors through gearbox. Operate the luffing control lever to achieve rolling in two directions, i.e. lifting and lowering the boom.

Brake: normally closed, built-in, wet, blade-type, spring

Specifications

loaded; spring-applied and hydraulically-released.
Winch drum: using fold line groove winch drum to avoid entangling during winding the ropes into multi layers.

Luffing Mechanism	Outermost Speed of Wire Rope	0 ~ 73m/min (0 ~ 240fpm)
	Wire Rope Diameter	Φ 20mm(13/16")
	Wire Rope Length of luffing Winch	180m(590' 7")
	Rated Single-line Pull	6,900kg(15,200lb)



Slewing Mechanism

Internal gearing slewing driving system, allowing 360°rotation.

Brake: normally closed, built-in, wet, blade-type, spring loaded; spring-applied and hydraulically-released.

Slewing lock: hydraulically-controlled locking pin is provided to ensure the upperworks are securely locked after work completion or during transportation.

Free slipping: during hoisting load, the center of gravity of the load and that of the boom might not be in the same plane due to mis-judging, when, the function of free slipping will rectify the upper-works to prevent the suspended load from wiggling.

Slewing ring: Q series single-row ball slewing ring.

Slewing speed: 0~2.25rpm.



Driver's Cab

The sliding door of cab allows easy and safe opening and closing. The large window, together with lower beam and upper beam head lights and rearview mirror permit broad viewing area; location of air conditioner, MP3 player, seat, control levers, control buttons are all arranged ergonomically, making the operation more comfortable.

Armrest box: the left and right armrest boxes are installed with control levers, electric switches, and ignition lock. The armrest boxes can also adjust with the seat.

Seat: suspension, multi-direction, multi-position, installed with in-seat interlocking switch.

Air conditioner: cool and warm wind, optimal wind tunnel and wind port.



Counterweight

The casting counterweight blocks are installed by piling one by one on counterweight tray, making easy assembly, disassembly and transportation.

Standard counterweight weight is 27,000kg (60,000lb) in total, containing one 3,600kg(8,000lb) counterweight tray, three 3,100kg(6,800lb) left counterweight blocks, three 3,100kg(6,800lb) right counterweight blocks, and two 2,500kg(5,500lb) central counterweight blocks.

One additional counterweight block of 2,500kg(5,500lb) Using the additional counterweight block in certain conditions with medium or long booms can improve the hoisting capability of the crane.



Lowerworks

Independent traveling drive is provided in each crawler frame. The hydraulic traveling motor drives gear reducer and achieves straight-line traveling and steering.

Brake: normally closed, built-in, wet, blade-type, spring loaded; spring-applied and hydraulically-released.

Crawler telescoping is achieved by extending and retracting the crawler frame.

Crawler tensioning is achieved by adjusting the shim plates with the guide rollers supported by hydraulic jack.

Crawler pads are made of high-strength alloy steel casting.

Travel Speed (low):0~1.1 km/h(0~0.68 mph)

Travel Speed (high):0~2.0 km/h(0~1.24mph)



Operation Device



Boom

Lattice structure, main chords use high-strength alloy steel pipes. Boom sections are connected with pin shafts. Basic boom is composed of one 6.5m boom base and one 6.5m boom tip.

Boom inserts: 3m×1(9'10"×1), 6m×1(19'8"×3), 9m×4(29'6"×4)

Boom length: 13m~58m(42'8"~190'3")

Specifications

➤ Fixed Jib

Lattice structure. Main chords use high-strength alloy steel pipes. Jib sections are connected with pin shafts. Basic jib is composed of one 4.5m jib base and one 4.5m (14'9") jib tip.

Jib inserts: 4.5m×2(14'9"×2);

Jib length: 9m~18((29'6"~59'1");

Full Extensional Boom + Full Extensional Jib: 49m (160'9") +18m (59'1").

➤ Extension Jib

Welding structure, connected to main boom with pin shafts, used for installing auxiliary hook block.

➤ Hook Blocks

80t (88USt) hook block

50t (55USt) hook block

25t (27.6USt) hook block

9t (10USt) ball hook

Note: the above-mentioned devices are the complete configurations. Actual configurations see the purchase contract.



Safety Devices

➤ Switch for Assembling Mode / Operating Mode

The over-hoist limit device, boom limits, A-frame alarming device, track telescopic alarming device, and load moment limiter can be overridden in the assembling mode.

While under normal operating mode, all these safety devices are functioning.

➤ Emergency Stop

When emergency occurs, press this button to cut off the electricity and stop all the operations.

➤ Emergency Operating

If an operating system failure occurs, the emergency electric plugs can be connected to the standby power. Then the crane can be operated to safe state. During emergency operation, all safety devices stop functioning.

➤ Load Moment Limiter

The load moment limiter is independently controlled by computer and displays the actual load on the boom. It automatically detects the weight hoisted by the crane and the angle of boom, as well as displays the rated load, actual load, operating radius and angle of boom.

Components: host machine, monitor, angle sensor and force sensor etc.

Function: real-time display the rated load, actual load, operating radius, angle and height of the boom under the current situation of the crane. Automatically detect the dynamic data of an overload and sounds an alarm immediately and stop the operation.

➤ Over-hoist Limit Device for Main and Auxiliary Hooks

The limit switch and anti-two block on the upper boom are used to prevent the hook from being lifted too high. When the hook is lifted to a certain height, the limit switch is activated with a buzzer on the control board sending an alarm to both electronic and hydraulic controls, and the hook lifting operation stops automatically.

➤ Over Roll-out Limit Device for Main and Auxiliary Hooks

It is composed of the motion trigger device fixed inside of the drum and a proximity switch. It can send a signal when the wire rope is rolled out when there are only three wraps left on the drum. The electronic controlling system can automatically stop the hooks and send alarm through the buzzer and display.

➤ Function Locking

If the function locking joystick is not in position or the operator is not at seat, all the other control levers are out of commission so as to prevent mis-operation.

➤ Winch Lock Device

Electronic controlled locking device is set in all the winch drums, which means it is essential to release the ratchet before the winding operation so as to prevent the mis-operation caused by lever and to guarantee the safety when the winding is under non-operating mode.

Specifications

➤ Slewing Lock Device

It uses hydraulic power pins to lock the upperworks at front or back. The slewing pin is electrically controlled, which can coordinate the slewing operation and prevent mis-operation.

➤ A-frame Alarming Device

Under normal operating mode, the A-frame alarm system is activated. The system sends an alarm through the buzzer and display, and all the operations stops at the same time.

➤ Boom Limit Device

When the boom angle is over 78°, the alarm buzzer sounds, and the luffing winch is stopped. The lowering operation is allowed. This protection function is the small for the load moment limiter and anti-two block switch. When the angle of the boom is lower than 30°, the system sends an alarm through the buzzer and display of combined instruments. At the same time, the boom stops. The raising operation is allowed. This safeguard function is automatically controlled by load moment limiter.

➤ Boom Back-stop Device

The back-stop rod is made of nested steel pipe and spring structure fixed on the top of the lower boom, which is equipped with the function of support through the spring pressure so as to prevent the main boom retroversion.

➤ Boom Angle Indicator

Pendulum-type angle indicator mounted at the side close to the driver's cab of the lower boom.

➤ Hook Clamp

Each kind of lifting hook is equipped with a clamp plate used to prevent the hoisting wire rope from falling off.

➤ Monitoring System

Camera: 2 cameras, respectively for monitoring the auxiliary winch, luffing winch and the situation of the rear of the crane for the complete appliance.

Optional: zoom camera, monitoring the working state of

the hooks.

Optional: remote monitoring system, which is equipped with GPS and GPRS for data transmission, device status inquiry and data statistical analysis, running data supervision and analysis, and fault remote diagnosis.

➤ Lightning Protection Device

It includes grounding devices and surge-protect device, which can prevent the damage to the electronic components and the hurt to the staff from lightning.

➤ Gradienter

Electronic gradienter can indicate the inclining angle of the upperworks on the monitor of the control system.

➤ Tri-color Load Alarming Light

The load alarming light includes 3 colors, which can display the instantaneous load synchronously. Namely, the green color means the load rate is less than 92%, the yellow color means the load rate is between 92% to 100% and the red color means the load rate is over 100%, which is in overload situation. When the yellow light is on, the pre-alarm light begins to flicker and sound a discontinuous alarm; when the red light is on, the pre-alarm begins to flicker and sound a continuous alarm; when the actual load reaches 102% of rated load, the system will cut off those operations prone to danger.

➤ Audio-visual Alarm

When the engine is working, the alarm light is flickering; when the crane is traveling or slewing, it sounds an alarm.

➤ Slewing Indicator

When the crane is traveling or slewing, the slewing indicator is flickering all the time.

➤ Illumination

Night illuminating devices such as winch illuminator, dipped light in front of the driver's cab, angle adjustable high beam and head lamp in driver's cab are installed so as to improve safety for construction during night.

Specifications



Rearview Mirror

The mirrors shall be respectively set at the right side of the driver's cab and the front handrail of the left cover.



Pharos

It is installed at the top of the boom system to send signal of height.



Anemometer

It is installed at the top of the boom system to detect real-time wind speed and can transmit the data to the driver's cab for display on the monitor.

Key Words



Operating radius
Radius (R)



Main boom (H)
Boom angle
Mixed main boom (HJ)
Light main boom (H_L)



Fixed jib (FJ)
Fixed short jib (SF)
Light fixed short jib (SF_L)
Heavy fixed short jib (SF_H)



Luffing jib (LJ)



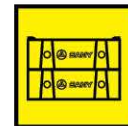
Superlift counterweight (B)
Superlift mast (D)



Superlift radius



Counterweight



Central ballast

Operating Condition Code:

H: Heavy main boom

H_L: Light main boom

HD (HDB): Heavy main boom + superlift mast (+ superlift counterweight)

HJ: Mixed main boom

HJD (HJDB): Mixed main boom + superlift mast (+ superlift counterweight)

FJ: Fixed jib

LJ: Luffing jib

LJD (LJDB): Luffing jib + superlift mast (+ superlift counterweight)

SF: Fixed short jib

SF_L: Light fixed short jib

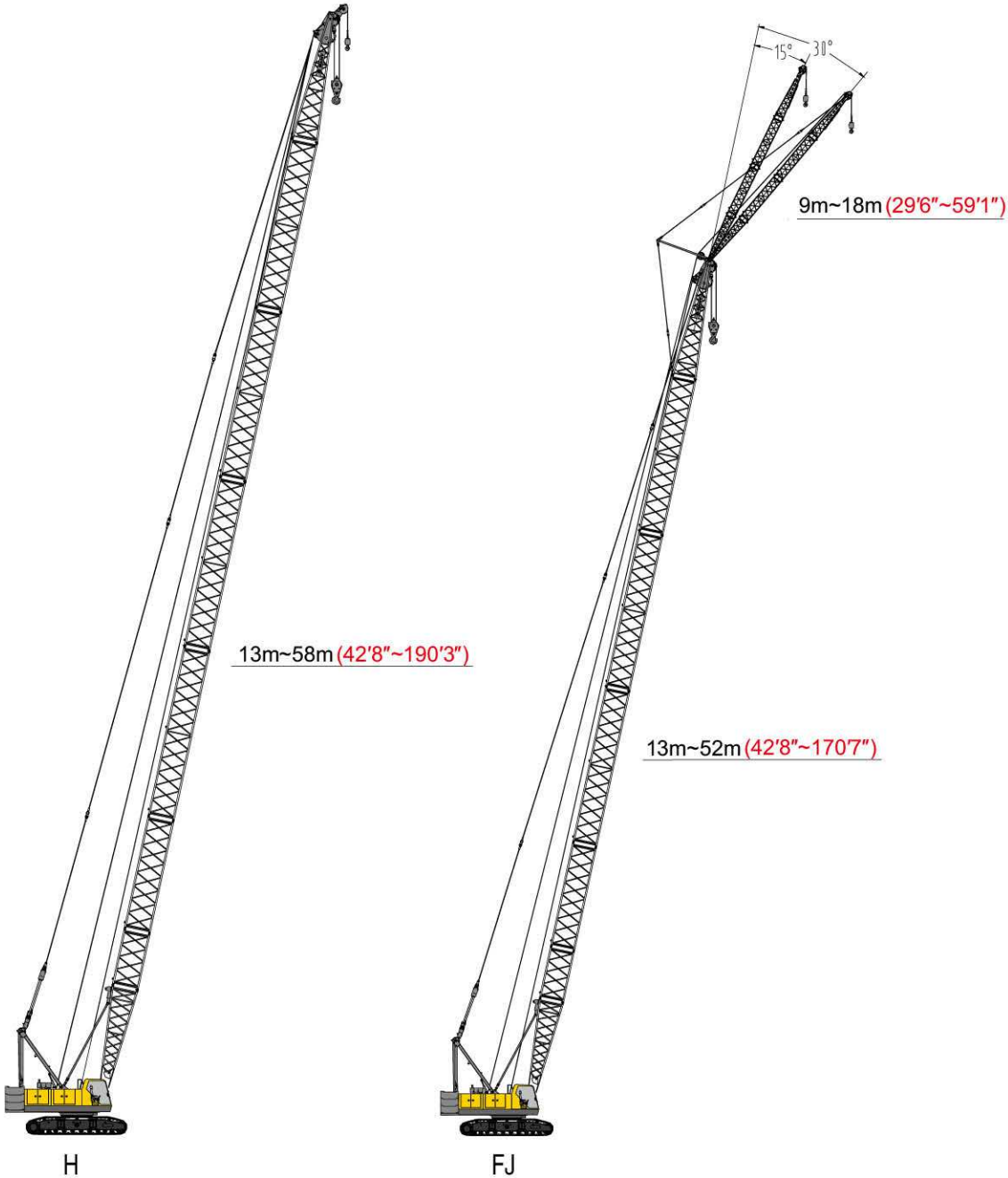
SF_LD SF_LDB): Light fixed short jib + superlift mast (+ superlift counterweight)

SF_H: Heavy fixed short jib

SF_HD (SF_HDB): Heavy fixed short jib + superlift mast (+ superlift counterweight)

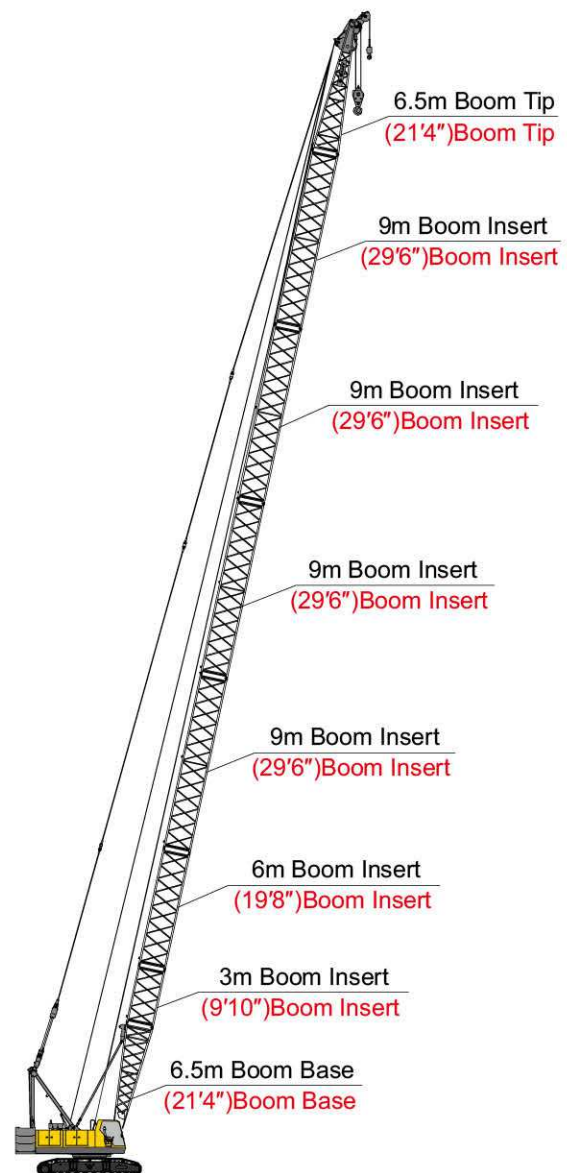
Note: These keywords are general terms. A specific product may not use all of them.

Operating Conditions

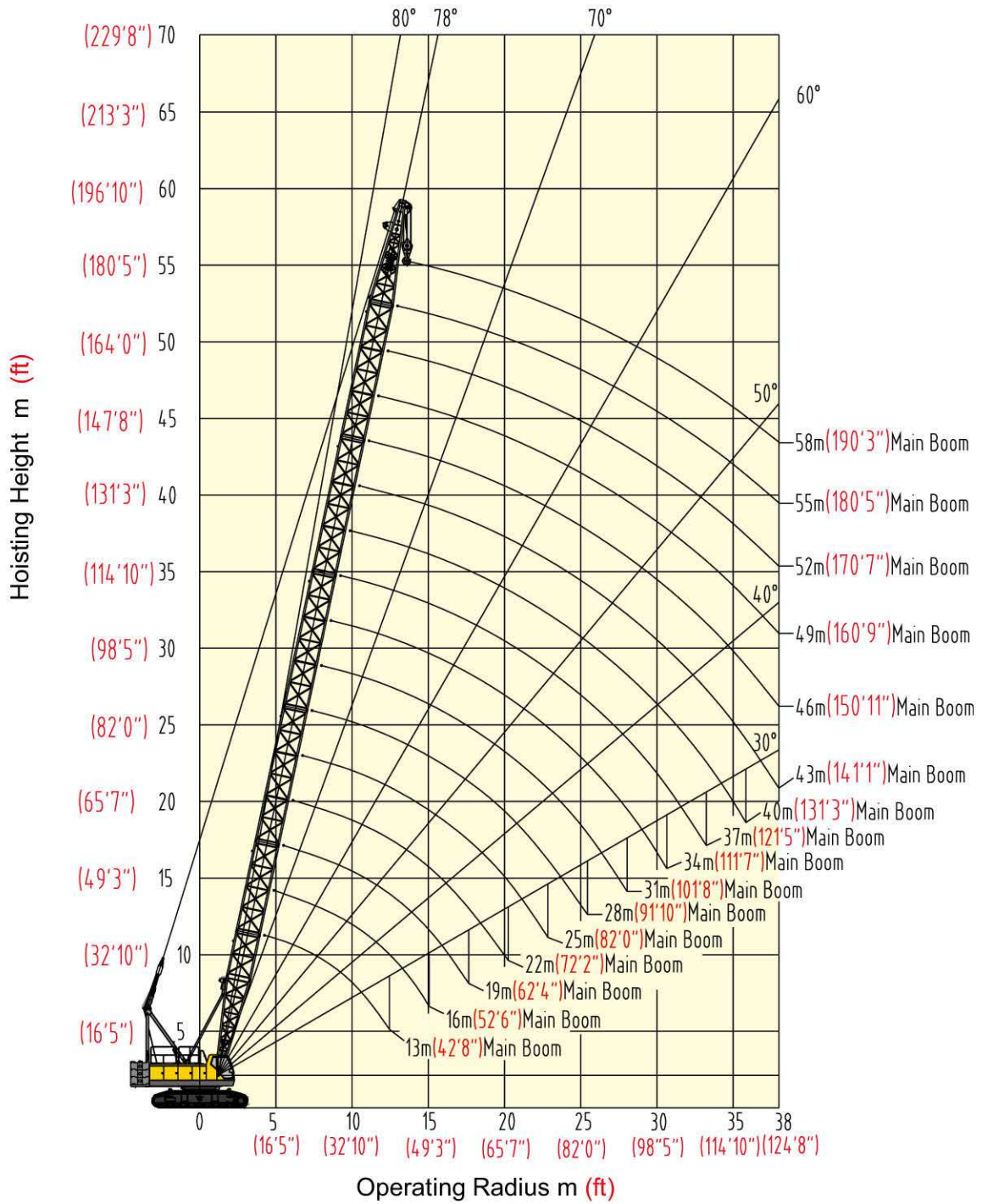


H Operating Condition/Combination of Boom

Boom Length m(ft)	Boom Insert		
	3m (9' 10")	6m (19' 8")	9m (29' 6")
13 (42' 8")	-	-	-
16 (52' 6")	1	-	-
19 (62' 4")	-	1	-
22 (72' 2")	-	-	1
25 (82')	1	-	1
28 (91' 10")	-	1	1
31 (101' 8")	1	1	1
34 (111' 7")	1	-	2
37 (121' 5")	-	1	2
40 (131' 3")	1	1	2
43 (141' 1")	1	-	3
46 (150' 11")	-	1	3
49 (160' 9")	1	1	3
52 (170' 7")	1	-	4
55 (180' 5")	-	1	4
58 (190' 3")	1	1	4



Operating Range Diagram



Hoisting Height and Operating Range Diagram

Load Charts of H Operating Condition

Main Boom Load Charts 1/3										kg(lb)×1000		
Boom m(ft)	13	16	19	22	25	28	31	34				
Radius m(ft)	(42'8")	(52'6")	(62'4")	(72'2")	(82')	(91'10")	(101'8")		(111'7")			
4.3	80.00											
(14'1")	(176.37)											
4.5	76.50											
(14'9")	(168.65)											
5	68.07	66.80										
(16'5")	(150.07)	(147.27)										
5.5	59.18	58.90	58.72									
(18'1")	(130.47)	(129.85)	(129.45)									
6	52.30	52.02	51.84	51.66								
(19'8")	(115.3)	(114.68)	(114.29)	(113.89)								
6.5	46.82	46.54	46.35	46.18	45.90							
(21'4")	(103.22)	(102.6)	(102.18)	(101.81)	(101.19)							
7	42.34	42.06	41.88	41.70	41.42	40.72						
(22'12")	(93.34)	(92.72)	(92.33)	(91.93)	(91.31)	(89.77)						
7.5	38.60	38.30	38.20	38.00	37.70	37.10	36.90	38.50				
(24'7")	(85.16)	(84.52)	(84.13)	(83.73)	(83.11)	(81.7)	(81.33)	(84.88)				
8	35.50	35.20	35.00	34.80	34.60	34.00	33.80	35.30	33.51	35.01		
(26'3")	(78.24)	(77.6)	(77.2)	(76.81)	(76.19)	(74.89)	(74.49)	(77.8)	(73.88)	(77.18)		
8.5	32.80	32.50	32.30	32.20	31.90	31.30	31.10	32.60	30.86	32.26		
(27'11")	(72.31)	(71.67)	(71.27)	(70.9)	(70.26)	(69.05)	(68.65)	(71.76)	(68.03)	(71.12)		
9	30.47	30.20	30.00	29.80	29.60	29.00	28.90	30.20	28.56	29.88		
(29'6")	(67.17)	(66.56)	(66.16)	(65.76)	(65.15)	(63.98)	(63.6)	(66.51)	(62.96)	(65.87)		
10	26.65	26.37	26.20	26.00	25.70	25.30	25.10	26.30	24.79	25.97		
(32'10")	(58.75)	(58.13)	(57.72)	(57.34)	(56.7)	(55.67)	(55.27)	(57.89)	(54.65)	(57.25)		
11	23.64	23.35	23.17	22.99	22.71	22.28	22.10	23.17	21.81	22.88		
(36'1")	(52.12)	(51.48)	(51.08)	(50.68)	(50.07)	(49.12)	(48.72)	(51.08)	(48.08)	(50.44)		
12	21.21	20.92	20.74	20.56	20.27	19.87	19.69	20.67	19.41	20.38		
(39'4")	(46.76)	(46.12)	(45.72)	(45.33)	(44.69)	(43.81)	(43.41)	(45.57)	(42.79)	(44.93)		
13		18.91	18.73	18.55	18.27	17.88	17.71	18.60	17.42	18.32		
(42'8")		(41.69)	(41.29)	(40.9)	(40.28)	(39.42)	(39.04)	(41.01)	(38.4)	(40.39)		
14		17.23	17.04	16.87	16.58	16.22	16.04	16.87	15.80	16.60		
(45'11")		(37.99)	(37.57)	(37.19)	(36.55)	(35.76)	(35.36)	(37.19)	(34.74)	(36.55)		
15			15.61	15.43	15.15	14.80	14.62	15.39	14.30	15.10		
(49'3")			(34.41)	(34.02)	(33.4)	(32.63)	(32.23)	(33.93)	(31.61)	(33.31)		
16			14.37	14.20	13.91	13.58	13.40	14.12	13.11	13.80		
(52'6")			(31.68)	(31.31)	(30.67)	(29.94)	(29.54)	(31.13)	(28.9)	(30.49)		
18				12.18	11.89	11.58	11.40	12.04	11.12	11.80		
(59'1")				(26.85)	(26.21)	(25.53)	(25.13)	(26.54)	(24.51)	(25.9)		
20					10.31	10.01	9.84	10.41	9.55	10.12		
(65'7")					(22.73)	(22.07)	(21.69)	(22.95)	(21.05)	(22.31)		
22					9.03	8.75	8.58	9.09	8.29	8.81		
(72'2")					(19.91)	(19.29)	(18.92)	(20.04)	(18.28)	(19.42)		
24						7.72	7.54	8.01	7.25	7.73		
(78'9")						(17.02)	(16.62)	(17.66)	(15.98)	(17.04)		
26							6.67	7.11	6.36	6.82		
(85'4")							(14.7)	(15.67)	(14.02)	(15.04)		
28									5.60	6.06		
(91'10")									(12.35)	(13.36)		
30									4.94	5.39		
(98'5")									(10.89)	(11.88)		
Counterweight	27	27	27	27	27	27	27	27+2.5	27	27+2.5		
kg(lb)×1000	(59.5)	(59.5)	(59.5)	(59.5)	(59.5)	(59.5)	(59.5)	(59.5+5.5)	(59.5)	(59.5+5.5)		

Note: Cells 40% grayed and italicized indicate that the operating condition is with both the standard counterweight and additional counterweight; and cells framed and grayed indicate that the lifting capacity depends on strength of boom system.

Load Charts of H Operating Condition

Main Boom Load Charts 2/3											kg(lb)×1000	
Boom m(ft)	37		40		43		46		49			
Radius m(ft)	(121'5")		(131'3")		(141'1")		(150'11")		(160'9")			
8.5 (27'11")												
9 (29'6")	28.38 (62.57)	29.70 (65.48)										
10 (32'10")	24.60 (54.23)	25.78 (56.83)	24.43 (53.86)	25.61 (56.46)	24.14 (53.22)	25.32 (55.82)						
11 (36'1")	21.63 (47.69)	22.70 (50.04)	21.45 (47.29)	22.52 (49.65)	21.17 (46.67)	22.23 (49.01)	20.98 (46.25)	22.05 (48.61)				
12 (39'4")	19.22 (42.37)	20.20 (44.53)	19.05 (42)	20.02 (44.14)	18.76 (41.36)	19.73 (43.5)	18.58 (40.96)	19.55 (43.1)	18.40 (40.56)	19.37 (42.7)		
13 (42'8")	17.24 (38.01)	18.13 (39.97)	17.06 (37.61)	17.95 (39.57)	16.77 (36.97)	17.67 (38.96)	16.59 (36.57)	17.48 (38.54)	16.41 (36.18)	17.30 (38.14)		
14 (45'11")	15.60 (34.33)	16.40 (36.16)	15.40 (33.93)	16.20 (35.76)	15.10 (33.31)	15.90 (35.12)	14.92 (32.89)	15.75 (34.72)	14.75 (32.52)	15.57 (34.33)		
15 (49'3")	14.20 (31.19)	14.90 (32.89)	14.00 (30.82)	14.70 (32.5)	13.70 (30.18)	14.50 (31.88)	13.50 (29.76)	14.27 (31.46)	13.33 (29.39)	14.09 (31.06)		
16 (52'6")	12.90 (28.51)	13.70 (30.09)	12.80 (28.11)	13.50 (29.7)	12.50 (27.49)	13.20 (29.06)	12.28 (27.07)	13.00 (28.66)	12.11 (26.7)	12.82 (28.26)		
18 (59'1")	10.90 (24.1)	11.60 (25.51)	10.80 (23.7)	11.40 (25.11)	10.50 (23.08)	11.10 (24.47)	10.28 (22.66)	10.92 (24.07)	10.11 (22.29)	10.74 (23.68)		
20 (65'7")	9.40 (20.66)	9.90 (21.89)	9.20 (20.26)	9.80 (21.52)	8.90 (19.62)	9.50 (20.88)	8.70 (19.22)	9.30 (20.48)	8.50 (18.78)	9.10 (20.08)		
22 (72'2")	8.11 (17.88)	8.62 (19)	7.93 (17.48)	8.44 (18.61)	7.61 (16.78)	8.16 (17.99)	7.40 (16.34)	8.00 (17.57)	7.20 (15.92)	7.80 (17.17)		
24 (78'9")	7.05 (15.54)	7.54 (16.62)	6.86 (15.12)	7.37 (16.25)	6.54 (14.42)	7.08 (15.61)	6.34 (13.98)	6.90 (15.19)	6.10 (13.54)	6.70 (14.79)		
26 (85'4")	6.15 (13.56)	6.64 (14.64)	5.96 (13.14)	6.46 (14.24)	5.64 (12.43)	6.17 (13.6)	5.44 (11.99)	6.00 (13.14)	5.30 (11.57)	5.80 (12.72)		
28 (91'10")	5.39 (11.88)	5.87 (12.94)	5.20 (11.46)	5.68 (12.52)	4.88 (10.76)	5.37 (11.84)	4.68 (10.32)	5.16 (11.38)	4.50 (9.9)	5.00 (10.96)		
30 (98'5")	4.74 (10.45)	5.19 (11.44)	4.55 (10.03)	5.00 (11.02)	4.23 (9.33)	4.68 (10.32)	4.03 (8.88)	4.48 (9.88)	3.83 (8.44)	4.28 (9.44)		
32 (104'12")	4.17 (9.19)	4.59 (10.12)	3.98 (8.77)	4.40 (9.7)	3.66 (8.07)	4.08 (8.99)	3.46 (7.63)	3.88 (8.55)	3.27 (7.21)	3.69 (8.13)		
34 (111'7")			3.48 (7.67)	3.88 (8.55)	3.17 (6.99)	3.56 (7.85)	2.97 (6.55)	3.36 (7.41)	2.77 (6.11)	3.16 (6.97)		
36 (118'1")					2.73 (6.02)	3.10 (6.83)	2.53 (5.58)	2.90 (6.39)	2.33 (5.14)	2.70 (5.95)		
38 (124'8")					2.34 (5.16)	2.69 (5.93)	2.14 (4.72)	2.49 (5.49)	1.94 (4.28)	2.29 (5.05)		
Counterweight kg(lb)×1000	27 (59.5)	27+2.5 (59.5+5.5)	27 (59.5)	27+2.5 (59.5+5.5)	27 (59.5)	27+2.5 (59.5+5.5)	27 (59.5)	27+2.5 (59.5+5.5)	27 (59.5)	27+2.5 (59.5+5.5)		

Note: Cells 40% grayed and italicized indicate that the operating condition is with both the standard counterweight and additional counterweight; and cells framed and grayed indicate that the lifting capacity depends on strength of boom system.

Load Charts of H Operating Condition

Main Boom Load Charts 3/3							kg(lb)×1000	
Boom m(ft) Radius m(ft)	52 (170'7")		55 (180'5")		58 (180'5")			
11 (36'1")								
12 (39'4")	18.11 (39.93)	19.08 (42.06)						
13 (42'8")	16.13 (35.56)	17.02 (37.52)	15.94 (35.14)	16.83 (37.1)	15.66 (34.52)	16.55 (36.49)		
14 (45'11")	14.46 (31.88)	15.28 (33.69)	14.28 (31.48)	15.10 (33.29)	13.99 (30.84)	14.81 (32.65)		
15 (49'3")	13.04 (28.75)	13.81 (30.45)	12.86 (28.35)	13.62 (30.03)	12.57 (27.71)	13.34 (29.41)		
16 (52'6")	11.82 (26.06)	12.53 (27.62)	11.63 (25.64)	12.35 (27.23)	11.35 (25.02)	12.06 (26.59)		
18 (59'1")	9.82 (21.65)	10.45 (23.04)	9.63 (21.23)	10.27 (22.64)	9.32 (20.55)	9.98 (22)		
20 (65'7")	8.20 (18.1)	8.80 (19.44)	8.00 (17.66)	8.60 (19.05)	7.70 (16.95)	8.40 (18.41)		
22 (72'2")	6.90 (15.21)	7.50 (16.56)	6.70 (14.77)	7.30 (16.14)	6.40 (14.09)	7.00 (15.45)		
24 (78'9")	5.80 (12.85)	6.40 (14.18)	5.60 (12.41)	6.20 (13.65)	5.30 (11.71)	5.90 (12.96)		
26 (85'4")	4.90 (10.87)	5.50 (12.13)	4.70 (10.43)	5.30 (11.57)	4.40 (9.74)	4.90 (10.89)		
28 (91'10")	4.20 (9.19)	4.70 (10.36)	4.00 (8.75)	4.50 (9.81)	3.70 (8.07)	4.10 (9.13)		
30 (98'5")	3.52 (7.76)	4.01 (8.84)	3.32 (7.32)	3.77 (8.31)	3.00 (6.61)	3.45 (7.61)		
32 (104'12")	2.95 (6.5)	3.41 (7.52)	2.75 (6.06)	3.17 (6.99)	2.44 (5.38)	2.85 (6.28)		
34 (111'7")	2.46 (5.42)	2.88 (6.35)	2.25 (4.96)	2.65 (5.84)	1.94 (4.28)	2.33 (5.14)		
36 (118'1")	2.02 (4.45)	2.42 (5.34)	1.81 (3.99)	2.18 (4.81)	1.50 (3.31)	1.87 (4.12)		
38 (124'8")	1.63 (3.59)	2.01 (4.43)	1.42 (3.13)	1.77 (3.9)	1.11 (2.45)	1.46 (3.22)		
Counterweight kg(lb)×1000	27 (59.5)	27+2.5 (59.5+5.5)	27 (59.5)	27+2.5 (59.5+5.5)	27 (59.5)	27+2.5 (59.5+5.5)		

Note: Cells 40% grayed and italicized indicate that the operating condition is with both the standard counterweight and additional counterweight; and cells framed and grayed indicate that the lifting capacity depends on strength of boom system.

Load Charts of H Operating Condition

Notes--Rated Load of the Crane

1. Rated loads in the load charts are calculated in the condition that the crane is on hard, horizontal and evenly-supported ground to hoist load slowly and evenly at non-traveling state.
2. Rated loads in the load charts are calculated as 75% of the tipping load.
3. The actual lifting capacity is the value that rated lifting capacity in the load charts deducting the weight of hook block and other lifting tools (80t (88USt) hook block weighted at 1,250kg (2,760lb), 50t(55USt) hook block weighted at 750kg(1,650lb), 25t(27.6USt) hook block weighted at 550kg(1,210lb), 9t(10USt) hook block weighted at 250kg (550lb).
4. When jib or extension jib is installed, the rated load includes the weight of main and auxiliary hook, and weight listed in the following table. The actual lifting capacity is the value that rated lifting capacity in the load charts deducting the weight listed in the following table, weight of main and auxiliary hook, and equivalent weight of wire ropes and other lifting tools to the boom head, but the crane is not allowed to operate when the deducted value is less than 800kg (1,800lb).

Jib Length m(ft)	9 (29'6")	13.5 (44'3")	18 (59'1")	Extension jib
Weight to deduct (kg) (lb)	1,000 (2,200)	1,300 (2,900)	1,650 (3,630)	200 (440)

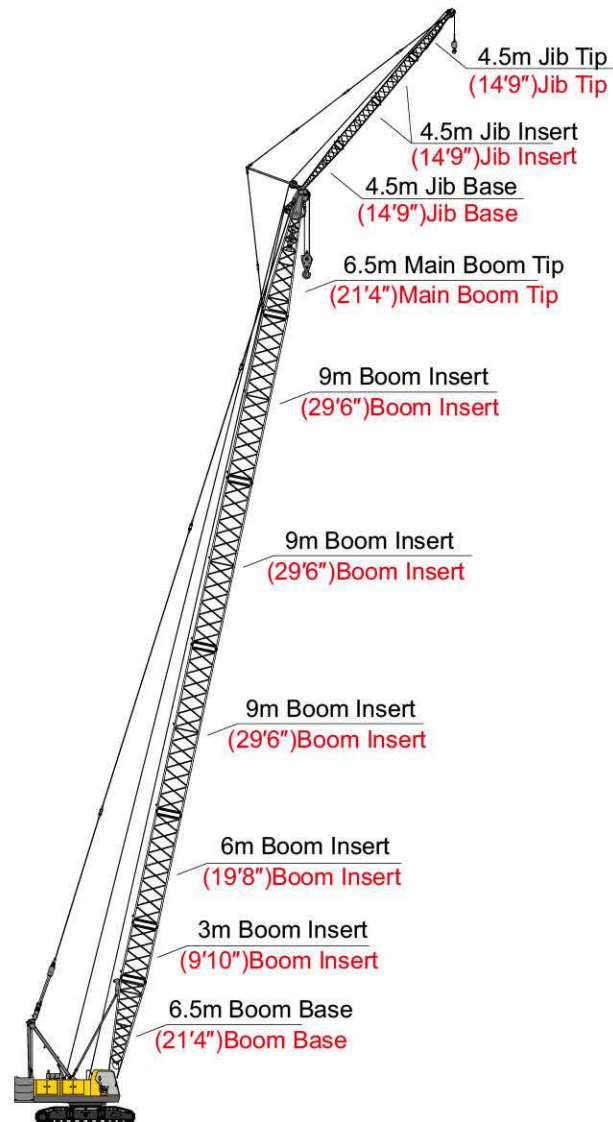
5. Booms that are allowed to install with fixed jib range from 37m(121'5") to 52m(170'7").
6. Crawler frames must be extended out when the crane is hoisting load.
7. Relations between the multiplying factor (M.F.) of wire ropes and maximum rated load as well as weight of hook block are as follows:

Hook Block Type t (USt)	Weight of Hook Block kg(lb)	Maximum Rated Load t (USt)											
		12 M.F.	11 M.F.	10 M.F.	9 M.F.	8 M.F.	7 M.F.	6 M.F.	5 M.F.	4 M.F.	3 M.F.	2 M.F.	1 M.F.
80 (88)	1,250 (2,760)	80 (88)	73.3 (81)	66.7 (73.5)	60 (66)	53.3 (59)	46.7 (51.5)	40 (44)	33.3 (36.7)	26.7 (29.4)	20 (22)	13.3 (14.7)	6.7 (7.4)
50 (55)	750 (1,650)						47.2 (52)	40.5 (44.6)	33.8 (37.3)	27.2 (30)	20.5 (22.6)	13.8 (15.2)	7.2 (7.9)
25 (27.6)	550 (1,210)										20.7 (22.8)	14 (15.4)	7.4 (8.2)
9 (10)	250 (550)												9.0 (10)

8. All rated loads listed in the load charts are all applicable to the whole 360° rotation.
9. Operating condition with additional counterweight (27,000kg+2,500kg) (59,520lb+5,510lb) is optional, not standard. Booms that are allowed to install with additional counterweight range from 31m (101'8") to 58m (190'3").

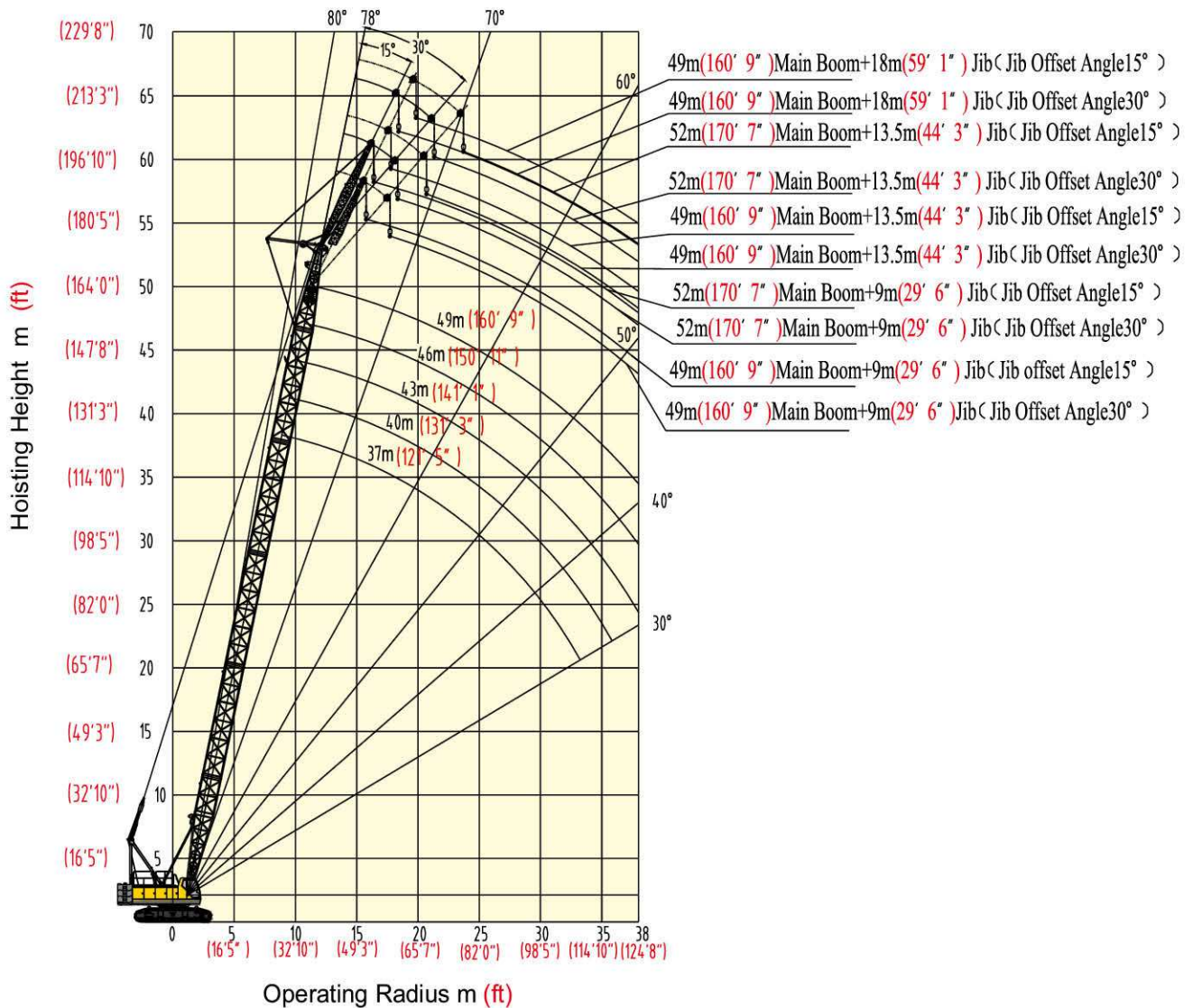
FJ Operating Condition/Combination of Jib

Jib Length (m) (ft)	Jib Insert 4.5m(14'9")
9 (29' 6")	-
13.5 (44' 3")	1
18 (59' 1")	2



Full Extensional Boom+ Full Extensional Jib:
49m+18m (160'9" + 59'1")

Operating Range Diagram



Hoisting Height and Operating Range Diagram

Load Charts of FJ Operating Condition

Fixed jib load charts 1/6													kg(lb)× 1000	
Boom length m(ft)	37m (121'5")													
	9m (29'6")				13.5m (44'3")				18m (59'1")					
Jib angle Boom angle	15°		30°		15°		30°		15°		30°			
	58°	4.78 <i>(10.54)</i>	5.16 <i>(11.38)</i>	4.51 <i>(9.94)</i>	4.87 <i>(10.74)</i>	4.06 <i>(8.95)</i>	4.40 <i>(9.7)</i>	3.60 <i>(7.94)</i>	3.60 <i>(7.94)</i>	3.48 <i>(7.67)</i>	3.50 <i>(7.72)</i>	2.40 <i>(5.29)</i>	2.40 <i>(5.29)</i>	
59°	5.00 <i>(11.02)</i>	5.39 <i>(11.88)</i>	4.71 <i>(10.38)</i>	5.00 <i>(11.02)</i>	4.25 <i>(9.37)</i>	4.60 <i>(10.14)</i>	3.60 <i>(7.94)</i>	3.60 <i>(7.94)</i>	3.50 <i>(7.72)</i>	3.50 <i>(7.72)</i>	2.40 <i>(5.29)</i>	2.40 <i>(5.29)</i>		
60°	5.24 <i>(11.55)</i>	5.64 <i>(12.43)</i>	4.91 <i>(10.82)</i>	5.00 <i>(11.02)</i>	4.46 <i>(9.83)</i>	4.82 <i>(10.63)</i>	3.60 <i>(7.94)</i>	3.60 <i>(7.94)</i>	3.50 <i>(7.72)</i>	3.50 <i>(7.72)</i>	2.40 <i>(5.29)</i>	2.40 <i>(5.29)</i>		
61°	5.49 <i>(12.1)</i>	5.90 <i>(13.01)</i>	5.00 <i>(11.02)</i>	5.00 <i>(11.02)</i>	4.67 <i>(10.3)</i>	5.04 <i>(11.11)</i>	3.60 <i>(7.94)</i>	3.60 <i>(7.94)</i>	3.50 <i>(7.72)</i>	3.50 <i>(7.72)</i>	2.40 <i>(5.29)</i>	2.40 <i>(5.29)</i>		
62°	5.76 <i>(12.7)</i>	6.00 <i>(13.23)</i>	5.00 <i>(11.02)</i>	5.00 <i>(11.02)</i>	4.90 <i>(10.8)</i>	5.27 <i>(11.62)</i>	3.60 <i>(7.94)</i>	3.60 <i>(7.94)</i>	3.50 <i>(7.72)</i>	3.50 <i>(7.72)</i>	2.40 <i>(5.29)</i>	2.40 <i>(5.29)</i>		
63°	6.00 <i>(13.23)</i>	6.00 <i>(13.23)</i>	5.00 <i>(11.02)</i>	5.00 <i>(11.02)</i>	5.15 <i>(11.35)</i>	5.53 <i>(12.19)</i>	3.60 <i>(7.94)</i>	3.60 <i>(7.94)</i>	3.50 <i>(7.72)</i>	3.50 <i>(7.72)</i>	2.40 <i>(5.29)</i>	2.40 <i>(5.29)</i>		
64°	6.00 <i>(13.23)</i>	6.00 <i>(13.23)</i>	5.00 <i>(11.02)</i>	5.00 <i>(11.02)</i>	5.41 <i>(11.93)</i>	5.81 <i>(12.81)</i>	3.60 <i>(7.94)</i>	3.60 <i>(7.94)</i>	3.50 <i>(7.72)</i>	3.50 <i>(7.72)</i>	2.40 <i>(5.29)</i>	2.40 <i>(5.29)</i>		
65°	6.00 <i>(13.23)</i>	6.00 <i>(13.23)</i>	5.00 <i>(11.02)</i>	5.00 <i>(11.02)</i>	5.70 <i>(12.57)</i>	6.00 <i>(13.23)</i>	3.60 <i>(7.94)</i>	3.60 <i>(7.94)</i>	3.50 <i>(7.72)</i>	3.50 <i>(7.72)</i>	2.40 <i>(5.29)</i>	2.40 <i>(5.29)</i>		
66°	6.00 <i>(13.23)</i>	6.00 <i>(13.23)</i>	5.00 <i>(11.02)</i>	5.00 <i>(11.02)</i>	6.00 <i>(13.23)</i>	6.00 <i>(13.23)</i>	3.60 <i>(7.94)</i>	3.60 <i>(7.94)</i>	3.50 <i>(7.72)</i>	3.50 <i>(7.72)</i>	2.40 <i>(5.29)</i>	2.40 <i>(5.29)</i>		
67°	6.00 <i>(13.23)</i>	6.00 <i>(13.23)</i>	5.00 <i>(11.02)</i>	5.00 <i>(11.02)</i>	6.00 <i>(13.23)</i>	6.00 <i>(13.23)</i>	3.60 <i>(7.94)</i>	3.60 <i>(7.94)</i>	3.50 <i>(7.72)</i>	3.50 <i>(7.72)</i>	2.40 <i>(5.29)</i>	2.40 <i>(5.29)</i>		
68°	6.00 <i>(13.23)</i>	6.00 <i>(13.23)</i>	5.00 <i>(11.02)</i>	5.00 <i>(11.02)</i>	6.00 <i>(13.23)</i>	6.00 <i>(13.23)</i>	3.60 <i>(7.94)</i>	3.60 <i>(7.94)</i>	3.50 <i>(7.72)</i>	3.50 <i>(7.72)</i>	2.40 <i>(5.29)</i>	2.40 <i>(5.29)</i>		
69°	6.00 <i>(13.23)</i>	6.00 <i>(13.23)</i>	5.00 <i>(11.02)</i>	5.00 <i>(11.02)</i>	6.00 <i>(13.23)</i>	6.00 <i>(13.23)</i>	3.60 <i>(7.94)</i>	3.60 <i>(7.94)</i>	3.50 <i>(7.72)</i>	3.50 <i>(7.72)</i>	2.40 <i>(5.29)</i>	2.40 <i>(5.29)</i>		
70°	6.00 <i>(13.23)</i>	6.00 <i>(13.23)</i>	5.00 <i>(11.02)</i>	5.00 <i>(11.02)</i>	6.00 <i>(13.23)</i>	6.00 <i>(13.23)</i>	3.60 <i>(7.94)</i>	3.60 <i>(7.94)</i>	3.50 <i>(7.72)</i>	3.50 <i>(7.72)</i>	2.40 <i>(5.29)</i>	2.40 <i>(5.29)</i>		
71°	6.00 <i>(13.23)</i>	6.00 <i>(13.23)</i>	5.00 <i>(11.02)</i>	5.00 <i>(11.02)</i>	6.00 <i>(13.23)</i>	6.00 <i>(13.23)</i>	3.60 <i>(7.94)</i>	3.60 <i>(7.94)</i>	3.50 <i>(7.72)</i>	3.50 <i>(7.72)</i>	2.40 <i>(5.29)</i>	2.40 <i>(5.29)</i>		
72°	6.00 <i>(13.23)</i>	6.00 <i>(13.23)</i>	5.00 <i>(11.02)</i>	5.00 <i>(11.02)</i>	6.00 <i>(13.23)</i>	6.00 <i>(13.23)</i>	3.60 <i>(7.94)</i>	3.60 <i>(7.94)</i>	3.50 <i>(7.72)</i>	3.50 <i>(7.72)</i>	2.40 <i>(5.29)</i>	2.40 <i>(5.29)</i>		
73°	6.00 <i>(13.23)</i>	6.00 <i>(13.23)</i>	5.00 <i>(11.02)</i>	5.00 <i>(11.02)</i>	6.00 <i>(13.23)</i>	6.00 <i>(13.23)</i>	3.60 <i>(7.94)</i>	3.60 <i>(7.94)</i>	3.50 <i>(7.72)</i>	3.50 <i>(7.72)</i>	2.40 <i>(5.29)</i>	2.40 <i>(5.29)</i>		
74°	6.00 <i>(13.23)</i>	6.00 <i>(13.23)</i>	5.00 <i>(11.02)</i>	5.00 <i>(11.02)</i>	6.00 <i>(13.23)</i>	6.00 <i>(13.23)</i>	3.60 <i>(7.94)</i>	3.60 <i>(7.94)</i>	3.50 <i>(7.72)</i>	3.50 <i>(7.72)</i>	2.40 <i>(5.29)</i>	2.40 <i>(5.29)</i>		
75°	6.00 <i>(13.23)</i>	6.00 <i>(13.23)</i>	5.00 <i>(11.02)</i>	5.00 <i>(11.02)</i>	6.00 <i>(13.23)</i>	6.00 <i>(13.23)</i>	3.60 <i>(7.94)</i>	3.60 <i>(7.94)</i>	3.50 <i>(7.72)</i>	3.50 <i>(7.72)</i>	2.40 <i>(5.29)</i>	2.40 <i>(5.29)</i>		
76°	6.00 <i>(13.23)</i>	6.00 <i>(13.23)</i>	5.00 <i>(11.02)</i>	5.00 <i>(11.02)</i>	6.00 <i>(13.23)</i>	6.00 <i>(13.23)</i>	3.60 <i>(7.94)</i>	3.60 <i>(7.94)</i>	3.50 <i>(7.72)</i>	3.50 <i>(7.72)</i>	2.40 <i>(5.29)</i>	2.40 <i>(5.29)</i>		
77°	6.00 <i>(13.23)</i>	6.00 <i>(13.23)</i>	5.00 <i>(11.02)</i>	5.00 <i>(11.02)</i>	6.00 <i>(13.23)</i>	6.00 <i>(13.23)</i>	3.60 <i>(7.94)</i>	3.60 <i>(7.94)</i>	3.50 <i>(7.72)</i>	3.50 <i>(7.72)</i>	2.40 <i>(5.29)</i>	2.40 <i>(5.29)</i>		
78°	6.00 <i>(13.23)</i>	6.00 <i>(13.23)</i>	5.00 <i>(11.02)</i>	5.00 <i>(11.02)</i>	6.00 <i>(13.23)</i>	6.00 <i>(13.23)</i>	3.60 <i>(7.94)</i>	3.60 <i>(7.94)</i>	3.50 <i>(7.72)</i>	3.50 <i>(7.72)</i>	2.40 <i>(5.29)</i>	2.40 <i>(5.29)</i>		
Counterweight kg(lb)×1000	27 <i>(59.5)</i>	27+2.5 <i>(59.5+ 5.5)</i>	27 <i>(59.5)</i>	27+2.5 <i>(59.5+ 5.5)</i>	27 <i>(59.5)</i>	27+2.5 <i>(59.5+ 5.5)</i>	27 <i>(59.5)</i>	27+2.5 <i>(59.5+ 5.5)</i>	27 <i>(59.5)</i>	27+2.5 <i>(59.5+ 5.5)</i>	27 <i>(59.5)</i>	27+2.5 <i>(59.5+ 5.5)</i>		

Note: Cells grayed and italicized indicate that the operating condition is with both the standard counterweight and additional counterweight.



Load Charts of FJ Operating Condition

Fixed jib load charts 2/6													kg(lb)× 1000
Boom length m(ft)	40m (131'3")												
	9m (29'6")				13.5m (44'3")				18m (59'1")				
Jib angle Boom angle	15°		30°		15°		30°		15°		30°		
	58°	4.13 (9.1)	4.49 (9.9)	3.91 (8.62)	4.25 (9.37)	3.52 (7.76)	3.84 (8.47)	3.26 (7.19)	3.56 (7.85)	3.01 (6.64)	3.30 (7.28)	2.40 (5.29)	2.40 (5.29)
59°	4.34 (9.57)	4.71 (10.38)	4.10 (9.04)	4.45 (9.81)	3.70 (8.16)	4.03 (8.88)	3.41 (7.52)	3.60 (7.94)	3.17 (6.99)	3.47 (7.65)	2.40 (5.29)	2.40 (5.29)	
60°	4.57 (10.07)	4.95 (10.91)	4.30 (9.48)	4.66 (10.27)	3.89 (8.58)	4.23 (9.33)	3.50 (7.72)	3.60 (7.94)	3.34 (7.36)	3.50 (7.72)	2.40 (5.29)	2.40 (5.29)	
61°	4.81 (10.6)	5.20 (11.46)	4.51 (9.94)	4.88 (10.76)	4.10 (9.04)	4.45 (9.81)	3.60 (7.94)	3.60 (7.94)	3.50 (7.72)	3.50 (7.72)	2.40 (5.29)	2.40 (5.29)	
62°	5.06 (11.16)	5.46 (12.04)	4.74 (10.45)	5.00 (11.02)	4.32 (9.52)	4.68 (10.32)	3.60 (7.94)	3.60 (7.94)	3.50 (7.72)	3.50 (7.72)	2.40 (5.29)	2.40 (5.29)	
63°	5.34 (11.77)	5.75 (12.68)	4.98 (10.98)	5.00 (11.02)	4.56 (10.05)	4.93 (10.87)	3.60 (7.94)	3.60 (7.94)	3.50 (7.72)	3.50 (7.72)	2.40 (5.29)	2.40 (5.29)	
64°	5.63 (12.41)	6.00 (13.23)	5.00 (11.02)	5.00 (11.02)	4.71 (10.38)	5.09 (11.22)	3.60 (7.94)	3.60 (7.94)	3.50 (7.72)	3.50 (7.72)	2.40 (5.29)	2.40 (5.29)	
65°	6.00 (13.12)	6.00 (13.23)	5.00 (11.02)	5.00 (11.02)	5.10 (11.22)	5.50 (12.08)	3.60 (7.94)	3.60 (7.94)	3.50 (7.72)	3.50 (7.72)	2.40 (5.29)	2.40 (5.29)	
66°	6.00 (13.23)	6.00 (13.23)	5.00 (11.02)	5.00 (11.02)	5.40 (11.86)	5.80 (12.74)	3.60 (7.94)	3.60 (7.94)	3.50 (7.72)	3.50 (7.72)	2.40 (5.29)	2.40 (5.29)	
67°	6.00 (13.23)	6.00 (13.23)	5.00 (11.02)	5.00 (11.02)	5.70 (12.57)	6.00 (13.23)	3.60 (7.94)	3.60 (7.94)	3.50 (7.72)	3.50 (7.72)	2.40 (5.29)	2.40 (5.29)	
68°	6.00 (13.23)	6.00 (13.23)	5.00 (11.02)	5.00 (11.02)	6.00 (13.23)	6.00 (13.23)	3.60 (7.94)	3.60 (7.94)	3.50 (7.72)	3.50 (7.72)	2.40 (5.29)	2.40 (5.29)	
69°	6.00 (13.23)	6.00 (13.23)	5.00 (11.02)	5.00 (11.02)	6.00 (13.23)	6.00 (13.23)	3.60 (7.94)	3.60 (7.94)	3.50 (7.72)	3.50 (7.72)	2.40 (5.29)	2.40 (5.29)	
70°	6.00 (13.23)	6.00 (13.23)	5.00 (11.02)	5.00 (11.02)	6.00 (13.23)	6.00 (13.23)	3.60 (7.94)	3.60 (7.94)	3.50 (7.72)	3.50 (7.72)	2.40 (5.29)	2.40 (5.29)	
71°	6.00 (13.23)	6.00 (13.23)	5.00 (11.02)	5.00 (11.02)	6.00 (13.23)	6.00 (13.23)	3.60 (7.94)	3.60 (7.94)	3.50 (7.72)	3.50 (7.72)	2.40 (5.29)	2.40 (5.29)	
72°	6.00 (13.23)	6.00 (13.23)	5.00 (11.02)	5.00 (11.02)	6.00 (13.23)	6.00 (13.23)	3.60 (7.94)	3.60 (7.94)	3.50 (7.72)	3.50 (7.72)	2.40 (5.29)	2.40 (5.29)	
73°	6.00 (13.23)	6.00 (13.23)	5.00 (11.02)	5.00 (11.02)	6.00 (13.23)	6.00 (13.23)	3.60 (7.94)	3.60 (7.94)	3.50 (7.72)	3.50 (7.72)	2.40 (5.29)	2.40 (5.29)	
74°	6.00 (13.23)	6.00 (13.23)	5.00 (11.02)	5.00 (11.02)	6.00 (13.23)	6.00 (13.23)	3.60 (7.94)	3.60 (7.94)	3.50 (7.72)	3.50 (7.72)	2.40 (5.29)	2.40 (5.29)	
75°	6.00 (13.23)	6.00 (13.23)	5.00 (11.02)	5.00 (11.02)	6.00 (13.23)	6.00 (13.23)	3.60 (7.94)	3.60 (7.94)	3.50 (7.72)	3.50 (7.72)	2.40 (5.29)	2.40 (5.29)	
76°	6.00 (13.23)	6.00 (13.23)	5.00 (11.02)	5.00 (11.02)	6.00 (13.23)	6.00 (13.23)	3.60 (7.94)	3.60 (7.94)	3.50 (7.72)	3.50 (7.72)	2.40 (5.29)	2.40 (5.29)	
77°	6.00 (13.23)	6.00 (13.23)	5.00 (11.02)	5.00 (11.02)	6.00 (13.23)	6.00 (13.23)	3.60 (7.94)	3.60 (7.94)	3.50 (7.72)	3.50 (7.72)	2.40 (5.29)	2.40 (5.29)	
78°	6.00 (13.23)	6.00 (13.23)	5.00 (11.02)	5.00 (11.02)	6.00 (13.23)	6.00 (13.23)	3.60 (7.94)	3.60 (7.94)	3.50 (7.72)	3.50 (7.72)	2.40 (5.29)	2.40 (5.29)	
Counterweight kg(lb)×1000	27 (59.5)	27+2.5 (59.5+ 5.5)	27 (59.5)	27+2.5 (59.5+ 5.5)	27 (59.5)	27+2.5 (59.5+ 5.5)	27 (59.5)	27+2.5 (59.5+ 5.5)	27 (59.5)	27+2.5 (59.5+ 5.5)	27 (59.5)	27+2.5 (59.5+ 5.5)	

Note: Cells grayed and italicized indicate that the operating condition is with both the standard counterweight and additional counterweight.

Load Charts of FJ Operating Condition

Fixed jib load charts 3/6													kg(lb)× 1000	
Boom length m(ft)	43m (141'1")													
	9m (29'6")				13.5m (44'3")				18m (59'1")					
Jib angle Boom angle	15°		30°		15°		30°		15°		30°			
	58°	3.59 (7.91)	3.93 (8.66)	3.40 (7.5)	3.73 (8.22)	3.05 (6.72)	3.36 (7.41)	2.83 (6.24)	3.12 (6.88)	2.60 (5.73)	2.88 (6.35)	2.37 (5.22)	2.40 (5.29)	
59°	3.78 (8.33)	4.13 (9.1)	3.58 (7.89)	3.91 (8.62)	3.22 (7.1)	3.54 (7.8)	2.98 (6.57)	3.28 (7.23)	2.76 (6.08)	3.05 (6.72)	2.40 (5.29)	2.40 (5.29)		
60°	4.00 (8.82)	4.36 (9.61)	3.77 (8.31)	4.11 (9.06)	3.41 (7.52)	3.73 (8.22)	3.14 (6.92)	3.44 (7.58)	2.92 (6.44)	3.21 (7.08)	2.40 (5.29)	2.40 (5.29)		
61°	4.22 (9.3)	4.59 (10.12)	3.97 (8.75)	4.32 (9.52)	3.61 (7.96)	3.94 (8.69)	3.32 (7.32)	3.60 (7.94)	3.18 (7.01)	3.48 (7.67)	2.40 (5.29)	2.40 (5.29)		
62°	4.47 (9.85)	4.85 (10.69)	4.19 (9.24)	4.55 (10.03)	3.82 (8.42)	4.16 (9.17)	3.50 (7.72)	3.60 (7.94)	3.29 (7.25)	3.50 (7.72)	2.40 (5.29)	2.40 (5.29)		
63°	4.73 (10.43)	5.12 (11.29)	4.42 (9.74)	4.79 (10.56)	4.05 (8.93)	4.40 (9.7)	3.60 (7.94)	3.60 (7.94)	3.49 (7.69)	3.50 (7.72)	2.40 (5.29)	2.40 (5.29)		
64°	5.01 (11.04)	5.41 (11.93)	4.64 (10.23)	5.00 (11.02)	4.29 (9.46)	4.65 (10.25)	3.60 (7.94)	3.60 (7.94)	3.50 (7.72)	3.50 (7.72)	2.40 (5.29)	2.40 (5.29)		
65°	5.30 (11.71)	5.70 (12.61)	4.90 (10.89)	5.00 (11.02)	4.60 (10.03)	4.90 (10.85)	3.60 (7.94)	3.60 (7.94)	3.50 (7.72)	3.50 (7.72)	2.40 (5.29)	2.40 (5.29)		
66°	5.60 (12.43)	6.00 (13.23)	5.00 (11.02)	5.00 (11.02)	4.80 (10.67)	5.20 (11.51)	3.60 (7.94)	3.60 (7.94)	3.50 (7.72)	3.50 (7.72)	2.40 (5.29)	2.40 (5.29)		
67°	6.00 (13.23)	6.00 (13.23)	5.00 (11.02)	5.00 (11.02)	5.10 (11.33)	5.50 (12.21)	3.60 (7.94)	3.60 (7.94)	3.50 (7.72)	3.50 (7.72)	2.40 (5.29)	2.40 (5.29)		
68°	6.00 (13.23)	6.00 (13.23)	5.00 (11.02)	5.00 (11.02)	5.50 (12.06)	5.90 (12.96)	3.60 (7.94)	3.60 (7.94)	3.50 (7.72)	3.50 (7.72)	2.40 (5.29)	2.40 (5.29)		
69°	6.00 (13.23)	6.00 (13.23)	5.00 (11.02)	5.00 (11.02)	5.80 (12.85)	6.00 (13.23)	3.60 (7.94)	3.60 (7.94)	3.50 (7.72)	3.50 (7.72)	2.40 (5.29)	2.40 (5.29)		
70°	6.00 (13.23)	6.00 (13.23)	5.00 (11.02)	5.00 (11.02)	6.00 (13.23)	6.00 (13.23)	3.60 (7.94)	3.60 (7.94)	3.50 (7.72)	3.50 (7.72)	2.40 (5.29)	2.40 (5.29)		
71°	6.00 (13.23)	6.00 (13.23)	5.00 (11.02)	5.00 (11.02)	6.00 (13.23)	6.00 (13.23)	3.60 (7.94)	3.60 (7.94)	3.50 (7.72)	3.50 (7.72)	2.40 (5.29)	2.40 (5.29)		
72°	6.00 (13.23)	6.00 (13.23)	5.00 (11.02)	5.00 (11.02)	6.00 (13.23)	6.00 (13.23)	3.60 (7.94)	3.60 (7.94)	3.50 (7.72)	3.50 (7.72)	2.40 (5.29)	2.40 (5.29)		
73°	6.00 (13.23)	6.00 (13.23)	5.00 (11.02)	5.00 (11.02)	6.00 (13.23)	6.00 (13.23)	3.60 (7.94)	3.60 (7.94)	3.50 (7.72)	3.50 (7.72)	2.40 (5.29)	2.40 (5.29)		
74°	6.00 (13.23)	6.00 (13.23)	5.00 (11.02)	5.00 (11.02)	6.00 (13.23)	6.00 (13.23)	3.60 (7.94)	3.60 (7.94)	3.50 (7.72)	3.50 (7.72)	2.40 (5.29)	2.40 (5.29)		
75°	6.00 (13.23)	6.00 (13.23)	5.00 (11.02)	5.00 (11.02)	6.00 (13.23)	6.00 (13.23)	3.60 (7.94)	3.60 (7.94)	3.50 (7.72)	3.50 (7.72)	2.40 (5.29)	2.40 (5.29)		
76°	6.00 (13.23)	6.00 (13.23)	5.00 (11.02)	5.00 (11.02)	6.00 (13.23)	6.00 (13.23)	3.60 (7.94)	3.60 (7.94)	3.50 (7.72)	3.50 (7.72)	2.40 (5.29)	2.40 (5.29)		
77°	6.00 (13.23)	6.00 (13.23)	5.00 (11.02)	5.00 (11.02)	6.00 (13.23)	6.00 (13.23)	3.60 (7.94)	3.60 (7.94)	3.50 (7.72)	3.50 (7.72)	2.40 (5.29)	2.40 (5.29)		
78°	6.00 (13.23)	6.00 (13.23)	5.00 (11.02)	5.00 (11.02)	6.00 (13.23)	6.00 (13.23)	3.60 (7.94)	3.60 (7.94)	3.50 (7.72)	3.50 (7.72)	2.40 (5.29)	2.40 (5.29)		
Counterweight kg(lb)×1000	27 (59.5)	27+2.5 (59.5+ 5.5)	27 (59.5)	27+2.5 (59.5+ 5.5)	27 (59.5)	27+2.5 (59.5+ 5.5)	27 (59.5)	27+2.5 (59.5+ 5.5)	27 (59.5)	27+2.5 (59.5+ 5.5)	27 (59.5)	27+2.5 (59.5+ 5.5)		

Note: Cells grayed and italicized indicate that the operating condition is with both the standard counterweight and additional counterweight.

Load Charts of FJ Operating Condition

Fixed jib load charts 4/6													kg(lb) × 1000	
Boom length m(ft)	46m (150'11")													
	9m (29'6")				13.5m (44'3")				18m (59'1")					
Jib angle Boom angle	15°		30°		15°		30°		15°		30°			
	58°	3.04 (6.7)	3.36 (7.41)	2.88 (6.35)	3.36 (7.41)	2.58 (5.69)	2.87 (6.33)	2.39 (5.27)	2.67 (5.89)	2.19 (4.83)	2.46 (5.42)	1.99 (4.39)	2.24 (4.94)	
59°	3.23 (7.12)	3.56 (7.85)	3.06 (6.75)	3.56 (7.85)	2.74 (6.04)	3.04 (6.7)	2.54 (5.6)	2.82 (6.22)	2.34 (5.16)	2.62 (5.78)	2.12 (4.67)	2.38 (5.25)		
60°	3.43 (7.56)	3.77 (8.31)	3.24 (7.14)	3.77 (8.31)	2.92 (6.44)	3.23 (7.12)	2.70 (5.95)	2.99 (6.59)	2.50 (5.51)	2.78 (6.13)	2.26 (4.98)	2.40 (5.29)		
61°	3.65 (8.05)	4.00 (8.82)	3.44 (7.58)	4.00 (8.82)	3.11 (6.86)	3.43 (7.56)	2.87 (6.33)	3.17 (6.99)	2.67 (5.89)	2.96 (6.53)	2.38 (5.25)	2.40 (5.29)		
62°	3.88 (8.55)	4.24 (9.35)	3.65 (8.05)	4.24 (9.35)	3.32 (7.32)	3.65 (8.05)	3.04 (6.7)	3.34 (7.36)	2.85 (6.28)	3.15 (6.94)	2.40 (5.29)	2.40 (5.29)		
63°	4.13 (9.1)	4.50 (9.92)	3.87 (8.53)	4.50 (9.92)	3.53 (7.78)	3.86 (8.51)	3.23 (7.12)	3.54 (7.8)	3.04 (6.7)	3.35 (7.39)	2.40 (5.29)	2.40 (5.29)		
64°	4.39 (9.68)	4.77 (10.52)	4.11 (9.06)	4.77 (10.52)	3.77 (8.31)	4.11 (9.06)	3.43 (7.56)	3.60 (7.94)	3.25 (7.16)	3.50 (7.72)	2.40 (5.29)	2.40 (5.29)		
65°	4.70 (10.32)	5.10 (11.18)	4.40 (9.61)	5.10 (11.18)	4.00 (8.86)	4.40 (9.66)	3.60 (7.94)	3.60 (7.94)	3.50 (7.65)	3.50 (7.72)	2.40 (5.29)	2.40 (5.29)		
66°	5.00 (11.02)	5.40 (11.93)	4.60 (10.23)	5.40 (11.93)	4.30 (9.46)	4.70 (10.27)	3.60 (7.94)	3.60 (7.94)	3.50 (7.72)	3.50 (7.72)	2.40 (5.29)	2.40 (5.29)		
67°	5.34 (11.77)	5.80 (12.7)	4.90 (10.89)	5.80 (12.7)	4.60 (10.12)	5.00 (10.96)	3.60 (7.94)	3.60 (7.94)	3.50 (7.72)	3.50 (7.72)	2.40 (5.29)	2.40 (5.29)		
68°	5.70 (12.57)	6.00 (13.23)	5.00 (11.02)	6.00 (13.23)	4.90 (10.82)	5.30 (11.68)	3.60 (7.94)	3.60 (7.94)	3.50 (7.72)	3.50 (7.72)	2.40 (5.29)	2.40 (5.29)		
69°	6.00 (13.23)	6.00 (13.23)	5.00 (11.02)	6.00 (13.23)	5.30 (11.57)	5.70 (12.48)	3.60 (7.94)	3.60 (7.94)	3.50 (7.72)	3.50 (7.72)	2.40 (5.29)	2.40 (5.29)		
70°	6.00 (13.23)	6.00 (13.23)	5.00 (11.02)	6.00 (13.23)	5.63 (12.41)	6.00 (13.23)	3.60 (7.94)	3.60 (7.94)	3.50 (7.72)	3.50 (7.72)	2.40 (5.29)	2.40 (5.29)		
71°	6.00 (13.23)	6.00 (13.23)	5.00 (11.02)	6.00 (13.23)	6.00 (13.23)	6.00 (13.23)	3.60 (7.94)	3.60 (7.94)	3.50 (7.72)	3.50 (7.72)	2.40 (5.29)	2.40 (5.29)		
72°	6.00 (13.23)	6.00 (13.23)	5.00 (11.02)	6.00 (13.23)	6.00 (13.23)	6.00 (13.23)	3.60 (7.94)	3.60 (7.94)	3.50 (7.72)	3.50 (7.72)	2.40 (5.29)	2.40 (5.29)		
73°	6.00 (13.23)	6.00 (13.23)	5.00 (11.02)	6.00 (13.23)	6.00 (13.23)	6.00 (13.23)	3.60 (7.94)	3.60 (7.94)	3.50 (7.72)	3.50 (7.72)	2.40 (5.29)	2.40 (5.29)		
74°	6.00 (13.23)	6.00 (13.23)	5.00 (11.02)	6.00 (13.23)	6.00 (13.23)	6.00 (13.23)	3.60 (7.94)	3.60 (7.94)	3.50 (7.72)	3.50 (7.72)	2.40 (5.29)	2.40 (5.29)		
75°	6.00 (13.23)	6.00 (13.23)	5.00 (11.02)	6.00 (13.23)	6.00 (13.23)	6.00 (13.23)	3.60 (7.94)	3.60 (7.94)	3.50 (7.72)	3.50 (7.72)	2.40 (5.29)	2.40 (5.29)		
76°	6.00 (13.23)	6.00 (13.23)	5.00 (11.02)	6.00 (13.23)	6.00 (13.23)	6.00 (13.23)	3.60 (7.94)	3.60 (7.94)	3.50 (7.72)	3.50 (7.72)	2.40 (5.29)	2.40 (5.29)		
77°	6.00 (13.23)	6.00 (13.23)	5.00 (11.02)	6.00 (13.23)	6.00 (13.23)	6.00 (13.23)	3.60 (7.94)	3.60 (7.94)	3.50 (7.72)	3.50 (7.72)	2.40 (5.29)	2.40 (5.29)		
78°	6.00 (13.23)	6.00 (13.23)	5.00 (11.02)	6.00 (13.23)	6.00 (13.23)	6.00 (13.23)	3.60 (7.94)	3.60 (7.94)	3.50 (7.72)	3.50 (7.72)	2.40 (5.29)	2.40 (5.29)		
Counterweight kg(lb) × 1000	27 (59.5)	27+2.5 (59.5+ 5.5)	27 (59.5)	27+2.5 (59.5+ 5.5)	27 (59.5)	27+2.5 (59.5+ 5.5)	27 (59.5)	27+2.5 (59.5+ 5.5)	27 (59.5)	27+2.5 (59.5+ 5.5)	27 (59.5)	27+2.5 (59.5+ 5.5)		

Note: Cells grayed and italicized indicate that the operating condition is with both the standard counterweight and additional counterweight.

Load Charts of FJ Operating Condition

Fixed jib load charts 5/6													kg(lb)× 1000
Boom length m(ft)	49m (160'9")												
	9m (29'6")				13.5m (44'3")				18m (59'1")				
Jib length m(ft)	15°		30°		15°		30°		15°		30°		
	Radius m(ft)		Radius m(ft)		Radius m(ft)		Radius m(ft)		Radius m(ft)		Radius m(ft)		
58°	2.56	2.87	2.43	2.73	2.18	2.46	2.02	2.29	1.83	2.09	1.67	1.91	
	(5.64)	(6.33)	(5.36)	(6.02)	(4.81)	(5.42)	(4.45)	(5.05)	(4.03)	(4.61)	(3.68)	(4.21)	
59°	2.74	3.06	2.60	2.90	2.34	2.63	2.17	2.44	1.98	2.24	1.79	2.04	
	(6.04)	(6.75)	(5.73)	(6.39)	(5.16)	(5.8)	(4.78)	(5.38)	(4.37)	(4.94)	(3.95)	(4.5)	
60°	2.93	3.25	2.78	3.09	2.51	2.81	2.32	2.60	2.13	2.40	1.93	2.18	
	(6.46)	(7.16)	(6.13)	(6.81)	(5.53)	(6.19)	(5.11)	(5.73)	(4.7)	(5.29)	(4.25)	(4.81)	
61°	3.14	3.47	2.96	3.28	2.69	2.99	2.48	2.77	2.29	2.57	2.07	2.33	
	(6.92)	(7.65)	(6.53)	(7.23)	(5.93)	(6.59)	(5.47)	(6.11)	(5.05)	(5.67)	(4.56)	(5.14)	
62°	3.36	3.70	3.17	3.50	2.80	3.11	2.65	2.94	2.47	2.76	2.22	2.40	
	(7.41)	(8.16)	(6.99)	(7.72)	(6.17)	(6.86)	(5.84)	(6.48)	(5.45)	(6.08)	(4.89)	(5.29)	
63°	3.60	3.95	3.30	3.64	3.09	3.41	2.84	3.14	2.66	2.95	2.38	2.40	
	(7.94)	(8.71)	(7.28)	(8.02)	(6.81)	(7.52)	(6.26)	(6.92)	(5.86)	(6.5)	(5.25)	(5.29)	
64°	3.85	4.21	3.61	3.96	3.32	3.65	3.03	3.34	2.86	3.16	2.40	2.40	
	(8.49)	(9.28)	(7.96)	(8.73)	(7.32)	(8.05)	(6.68)	(7.36)	(6.31)	(6.97)	(5.29)	(5.29)	
65°	4.10	4.50	3.90	4.20	3.60	3.90	3.20	3.60	3.10	3.40	2.40	2.40	
	(9.1)	(9.94)	(8.51)	(9.3)	(7.85)	(8.6)	(7.14)	(7.85)	(6.77)	(7.45)	(5.29)	(5.29)	
66°	4.40	4.80	4.10	4.50	3.70	4.10	3.50	3.60	3.30	3.50	2.40	2.40	
	(9.77)	(10.63)	(9.08)	(9.9)	(8.2)	(8.97)	(7.65)	(7.94)	(7.3)	(7.72)	(5.29)	(5.29)	
67°	4.75	5.20	4.40	4.80	4.10	4.50	3.60	3.60	3.50	3.50	2.40	2.40	
	(10.47)	(11.35)	(9.72)	(10.56)	(9.06)	(9.85)	(7.94)	(7.94)	(7.72)	(7.72)	(5.29)	(5.29)	
68°	5.11	5.50	4.70	5.00	4.40	4.80	3.60	3.60	3.50	3.50	2.40	2.40	
	(11.27)	(12.19)	(10.41)	(11.02)	(9.72)	(10.56)	(7.94)	(7.94)	(7.72)	(7.72)	(5.29)	(5.29)	
69°	5.49	5.92	5.00	5.00	4.80	5.10	3.60	3.60	3.50	3.50	2.40	2.40	
	(12.1)	(13.05)	(11.02)	(11.02)	(10.47)	(11.33)	(7.94)	(7.94)	(7.72)	(7.72)	(5.29)	(5.29)	
70°	5.91	6.00	5.00	5.00	5.11	5.51	3.60	3.60	3.50	3.50	2.40	2.40	
	(13.03)	(13.23)	(11.02)	(11.02)	(11.27)	(12.15)	(7.94)	(7.94)	(7.72)	(7.72)	(5.29)	(5.29)	
71°	6.00	6.00	5.00	5.00	5.52	5.94	3.60	3.60	3.50	3.50	2.40	2.40	
	(13.23)	(13.23)	(11.02)	(11.02)	(12.17)	(13.1)	(7.94)	(7.94)	(7.72)	(7.72)	(5.29)	(5.29)	
72°	6.00	6.00	5.00	5.00	5.96	6.00	3.60	3.60	3.50	3.50	2.40	2.40	
	(13.23)	(13.23)	(11.02)	(11.02)	(13.14)	(13.23)	(7.94)	(7.94)	(7.72)	(7.72)	(5.29)	(5.29)	
73°	6.00	6.00	5.00	5.00	6.00	6.00	3.60	3.60	3.50	3.50	2.40	2.40	
	(13.23)	(13.23)	(11.02)	(11.02)	(13.23)	(13.23)	(7.94)	(7.94)	(7.72)	(7.72)	(5.29)	(5.29)	
74°	6.00	6.00	5.00	5.00	6.00	6.00	3.60	3.60	3.50	3.50	2.40	2.40	
	(13.23)	(13.23)	(11.02)	(11.02)	(13.23)	(13.23)	(7.94)	(7.94)	(7.72)	(7.72)	(5.29)	(5.29)	
75°	6.00	6.00	5.00	5.00	6.00	6.00	3.60	3.60	3.50	3.50	2.40	2.40	
	(13.23)	(13.23)	(11.02)	(11.02)	(13.23)	(13.23)	(7.94)	(7.94)	(7.72)	(7.72)	(5.29)	(5.29)	
76°	6.00	6.00	5.00	5.00	6.00	6.00	3.60	3.60	3.50	3.50	2.40	2.40	
	(13.23)	(13.23)	(11.02)	(11.02)	(13.23)	(13.23)	(7.94)	(7.94)	(7.72)	(7.72)	(5.29)	(5.29)	
77°	6.00	6.00	5.00	5.00	6.00	6.00	3.60	3.60	3.50	3.50	2.40	2.40	
	(13.23)	(13.23)	(11.02)	(11.02)	(13.23)	(13.23)	(7.94)	(7.94)	(7.72)	(7.72)	(5.29)	(5.29)	
78°	6.00	6.00	5.00	5.00	6.00	6.00	3.60	3.60	3.50	3.50	2.40	2.40	
	(13.23)	(13.23)	(11.02)	(11.02)	(13.23)	(13.23)	(7.94)	(7.94)	(7.72)	(7.72)	(5.29)	(5.29)	
Counterweight kg(lb)×1000	27	27+2.5	27	27+2.5	27	27+2.5	27	27+2.5	27	27+2.5	27	27+2.5	
	(59.5)	(59.5+ 5.5)	(59.5)	(59.5+ 5.5)	(59.5)	(59.5+ 5.5)	(59.5)	(59.5+ 5.5)	(59.5)	(59.5+ 5.5)	(59.5)	(59.5+ 5.5)	

Note: Cells grayed and italicized indicate that the operating condition is with both the standard counterweight and additional counterweight.



Load Charts of FJ Operating Condition

Fixed jib load charts 6/6									kg(lb)×1000
Boom length m(ft)	52m (170'7")								
	9m (29'6")				13.5m (44'3")				
Jib angle Boom angle	15°		30°		15°		30°		
58°	2.05 <i>(4.52)</i>	2.35 <i>(5.18)</i>	1.94 <i>(4.28)</i>	2.22 <i>(4.89)</i>	1.74 <i>(3.84)</i>	2.01 <i>(4.43)</i>	1.62 <i>(3.57)</i>	1.88 <i>(4.14)</i>	
59°	2.19 <i>(4.83)</i>	2.49 <i>(5.49)</i>	2.08 <i>(4.59)</i>	2.37 <i>(5.22)</i>	1.90 <i>(4.19)</i>	2.18 <i>(4.81)</i>	1.76 <i>(3.88)</i>	2.02 <i>(4.45)</i>	
60°	2.34 <i>(5.16)</i>	2.65 <i>(5.84)</i>	2.22 <i>(4.89)</i>	2.52 <i>(5.56)</i>	2.06 <i>(4.54)</i>	2.34 <i>(5.16)</i>	1.91 <i>(4.21)</i>	2.18 <i>(4.81)</i>	
61°	2.51 <i>(5.53)</i>	2.83 <i>(6.24)</i>	2.37 <i>(5.22)</i>	2.68 <i>(5.91)</i>	2.24 <i>(4.94)</i>	2.53 <i>(5.58)</i>	2.06 <i>(4.54)</i>	2.33 <i>(5.14)</i>	
62°	2.69 <i>(5.93)</i>	3.02 <i>(6.66)</i>	2.54 <i>(5.6)</i>	2.85 <i>(6.28)</i>	2.42 <i>(5.34)</i>	2.72 <i>(6)</i>	2.23 <i>(4.92)</i>	2.51 <i>(5.53)</i>	
63°	2.88 <i>(6.35)</i>	3.22 <i>(7.1)</i>	2.64 <i>(5.82)</i>	2.96 <i>(6.53)</i>	2.63 <i>(5.8)</i>	2.94 <i>(6.48)</i>	2.41 <i>(5.31)</i>	2.70 <i>(5.95)</i>	
64°	3.08 <i>(6.79)</i>	3.43 <i>(7.56)</i>	2.89 <i>(6.37)</i>	3.22 <i>(7.1)</i>	2.84 <i>(6.26)</i>	3.16 <i>(6.97)</i>	2.60 <i>(5.73)</i>	2.90 <i>(6.39)</i>	
65°	3.30 <i>(7.28)</i>	3.70 <i>(8.07)</i>	3.10 <i>(6.81)</i>	3.40 <i>(7.56)</i>	3.10 <i>(6.79)</i>	3.40 <i>(7.52)</i>	2.90 <i>(6.35)</i>	3.20 <i>(7.01)</i>	
66°	3.50 <i>(7.8)</i>	3.90 <i>(8.62)</i>	3.30 <i>(7.28)</i>	3.70 <i>(8.05)</i>	3.30 <i>(7.34)</i>	3.70 <i>(8.09)</i>	3.00 <i>(6.66)</i>	3.30 <i>(7.34)</i>	
67°	3.80 <i>(8.38)</i>	4.20 <i>(9.22)</i>	3.50 <i>(7.78)</i>	3.90 <i>(8.58)</i>	3.60 <i>(7.94)</i>	4.00 <i>(8.71)</i>	3.30 <i>(7.19)</i>	3.60 <i>(7.89)</i>	
68°	4.09 <i>(9.02)</i>	4.50 <i>(9.9)</i>	3.80 <i>(8.33)</i>	4.00 <i>(8.82)</i>	3.90 <i>(8.6)</i>	4.30 <i>(9.39)</i>	3.50 <i>(7.74)</i>	3.60 <i>(7.94)</i>	
69°	4.39 <i>(9.68)</i>	4.80 <i>(10.58)</i>	4.00 <i>(8.82)</i>	4.00 <i>(8.82)</i>	4.20 <i>(9.3)</i>	4.60 <i>(10.12)</i>	3.60 <i>(7.94)</i>	3.60 <i>(7.94)</i>	
70°	4.73 <i>(10.43)</i>	4.80 <i>(10.58)</i>	4.00 <i>(8.82)</i>	4.00 <i>(8.82)</i>	4.50 <i>(9.92)</i>	4.80 <i>(10.58)</i>	3.60 <i>(7.94)</i>	3.60 <i>(7.94)</i>	
71°	4.80 <i>(10.58)</i>	4.80 <i>(10.58)</i>	4.00 <i>(8.82)</i>	4.00 <i>(8.82)</i>	4.66 <i>(10.27)</i>	4.80 <i>(10.58)</i>	3.60 <i>(7.94)</i>	3.60 <i>(7.94)</i>	
72°	4.80 <i>(10.58)</i>	4.80 <i>(10.58)</i>	4.00 <i>(8.82)</i>	4.00 <i>(8.82)</i>	4.80 <i>(10.58)</i>	4.80 <i>(10.58)</i>	3.60 <i>(7.94)</i>	3.60 <i>(7.94)</i>	
73°	4.80 <i>(10.58)</i>	4.80 <i>(10.58)</i>	4.00 <i>(8.82)</i>	4.00 <i>(8.82)</i>	4.80 <i>(10.58)</i>	4.80 <i>(10.58)</i>	3.60 <i>(7.94)</i>	3.60 <i>(7.94)</i>	
74°	4.80 <i>(10.58)</i>	4.80 <i>(10.58)</i>	4.00 <i>(8.82)</i>	4.00 <i>(8.82)</i>	4.80 <i>(10.58)</i>	4.80 <i>(10.58)</i>	3.60 <i>(7.94)</i>	3.60 <i>(7.94)</i>	
75°	4.80 <i>(10.58)</i>	4.80 <i>(10.58)</i>	4.00 <i>(8.82)</i>	4.00 <i>(8.82)</i>	4.80 <i>(10.58)</i>	4.80 <i>(10.58)</i>	3.60 <i>(7.94)</i>	3.60 <i>(7.94)</i>	
76°	4.80 <i>(10.58)</i>	4.80 <i>(10.58)</i>	4.00 <i>(8.82)</i>	4.00 <i>(8.82)</i>	4.80 <i>(10.58)</i>	4.80 <i>(10.58)</i>	3.60 <i>(7.94)</i>	3.60 <i>(7.94)</i>	
77°	4.80 <i>(10.58)</i>	4.80 <i>(10.58)</i>	4.00 <i>(8.82)</i>	4.00 <i>(8.82)</i>	4.80 <i>(10.58)</i>	4.80 <i>(10.58)</i>	3.60 <i>(7.94)</i>	3.60 <i>(7.94)</i>	
78°	4.80 <i>(10.58)</i>	4.80 <i>(10.58)</i>	4.00 <i>(8.82)</i>	4.00 <i>(8.82)</i>	4.80 <i>(10.58)</i>	4.80 <i>(10.58)</i>	3.60 <i>(7.94)</i>	3.60 <i>(7.94)</i>	
Counterweight kg(lb)×1000	27 <i>(59.5)</i>	27+2.5 <i>(59.5+5.5)</i>	27 <i>(59.5)</i>	27+2.5 <i>(59.5+5.5)</i>	27 <i>(59.5)</i>	27+2.5 <i>(59.5+5.5)</i>	27 <i>(59.5)</i>	27+2.5 <i>(59.5+5.5)</i>	

Note: Cells grayed and italicized indicate that the operating condition is with both the standard counterweight and additional counterweight.



SAN

Note ▶ SCC800C Hydraulic Crawler Crane

A series of horizontal dashed lines spanning the width of the page, intended as a template for additional text or notes.

★We reserve the right to modify information of the brochure without any prior notice.