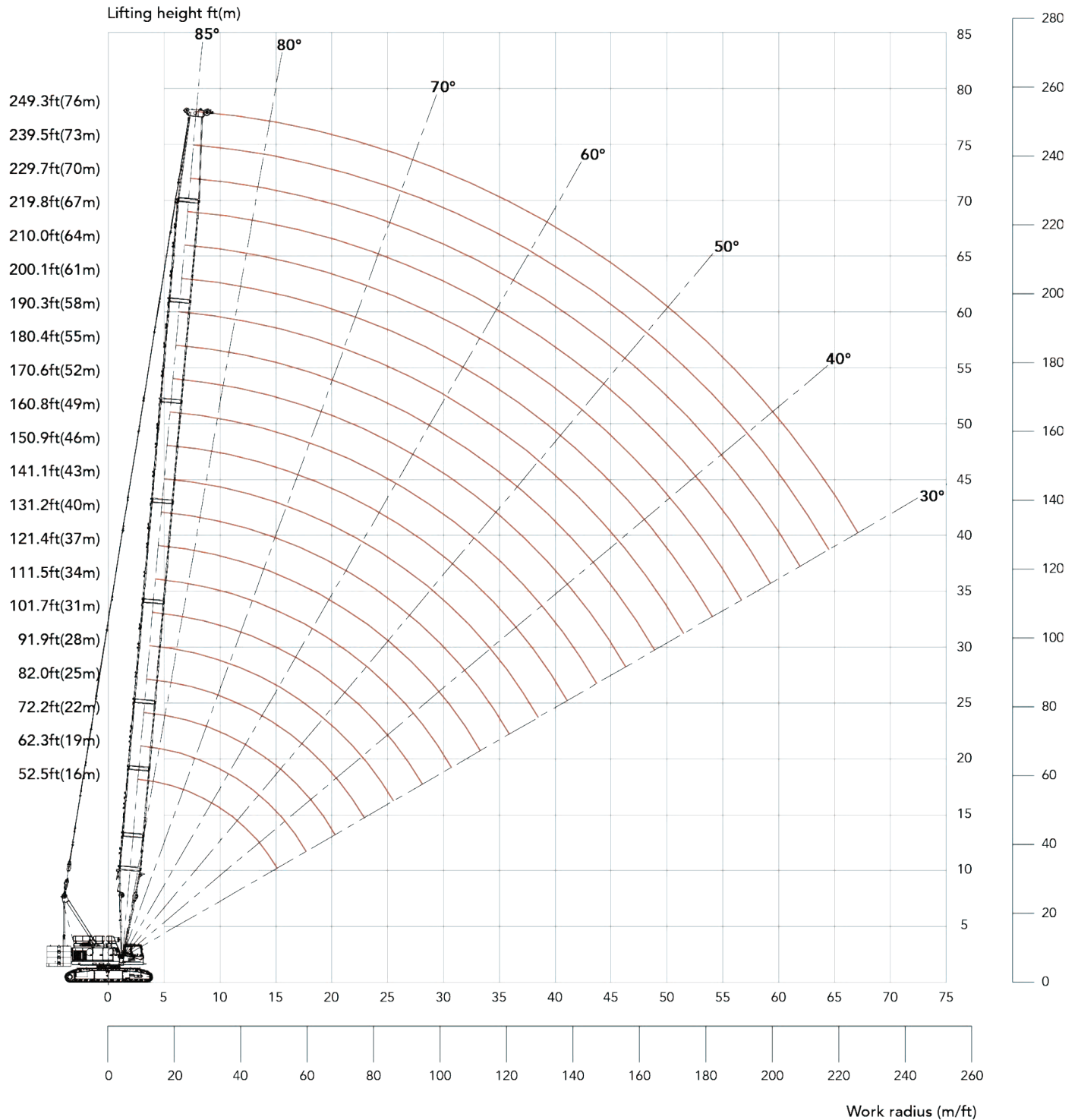


# SCA1350A | WORKING RADIUS IN H CONFIGURATION



In the interest of continual equipment development, SANY America, Inc. reserves the right to change these specifications at any time without prior notification.

# SCA1350A | LOAD CHART OF H CONFIGURATION

Main hook, Boom 52~249ft, without extension boom											
Boom length (ft) Radius (ft)	52	62	72	82	92	102	112	121	131	141	Boom length (ft) Radius (ft)
15	300										15
16	291.4										16
17	279.0	277.0									17
18	264.9	263.2									18
19	250.7	249.4									19
20	238.4	236.7	235.2	233.5							20
22	218.8	214.0	212.6	211.1							22
24	199.3	194.8	193.4	192.1	188.9	182.6	176.9				24
26	180.0	178.2	176.7	175.6	173.3	167.5	162.4				26
28	166.6	165.2	163.8	162.5	161.1	155.8	151.0	147.1	137.2		28
30	154.5	153.2	151.9	150.6	149.7	145.1	140.6	136.9	132.8	119.1	30
32	144.3	143.1	142.0	140.6	139.6	135.9	131.8	128.4	124.6	113.7	32
34	135.5	134.5	133.4	132.2	131.2	128.4	124.5	121.4	117.7	109.2	34
36	127.6	126.6	125.7	124.6	123.7	121.6	118.0	115.0	111.5	105.1	36
38	119.7	118.7	118.0	117.0	116.3	114.9	111.5	108.7	105.3	101.1	38
40	112.3	111.4	110.8	109.9	109.3	108.5	105.5	103.0	99.8	97.0	40
45	96.3	95.6	95.2	94.5	94.0	93.5	92.5	91.4	88.7	86.4	45
50		83.6	83.2	82.5	82.1	81.7	81.1	80.8	79.3	77.4	50
55		73.9	73.4	72.9	72.4	72.0	71.5	71.5	70.7	69.4	55
60			65.5	65.0	64.6	64.1	63.7	63.7	62.8	62.4	60
65			59.1	58.6	58.2	57.7	57.3	57.3	56.4	56.0	65
70				53.5	53.0	52.6	52.1	52.1	51.4	50.8	70
75					48.6	48.1	47.7	47.7	46.9	46.4	75
80						44.3	43.8	43.8	43.0	42.5	80
85						40.9	40.3	40.3	39.6	39.1	85
90						37.9	37.4	37.4	36.7	36.3	90
95							34.8	34.8	34.1	33.6	95
100								32.6	31.7	31.3	100
105									29.7	29.3	105
110									27.9	27.4	110
115									26.1	25.7	115
120										24.1	120
Parts of line	12	11	10	9	8	8	7	6	6	5	Parts of line

In the interest of continual equipment development, SANY America, Inc. reserves the right to change these specifications at any time without prior notification. Refer to machine's load chart.  
Capacities are in Klb.



# SCA1350A | LOAD CHART OF H CONFIGURATION

Main hook, Boom 52~249ft, without extension boom												
Boom length Radius (ft)	151	161	171	180	190	200	210	220	230	239	249	Boom length Radius (ft)
30	116.2	112.8										30
32	111.5	105.5										32
34	107.1	100.7	98.8	96.8	86.7							34
36	102.9	97.2	96.0	94.0	84.0							36
38	98.8	93.7	93.2	91.3	81.3							38
40	94.6	90.2	90.0	88.1	79.0	77.3	71.9	66.0	60.4	52.9	49.7	40
45	84.2	81.7	79.9	78.1	75.2	73.6	69.0	63.5	58.9	52.7	49.1	45
50	75.6	73.7	72.0	70.2	68.5	66.9	64.4	60.3	56.8	51.9	48.4	50
55	68.1	66.5	65.0	63.4	61.9	60.4	59.0	56.5	54.2	50.8	47.5	55
60	61.6	60.2	58.9	57.6	56.1	54.8	53.5	52.1	50.9	49.0	46.1	60
65	55.5	55.0	53.7	52.5	51.2	49.9	48.8	47.4	46.3	45.1	43.9	65
70	50.5	49.9	49.4	48.3	46.9	45.8	44.7	43.5	42.4	41.4	40.3	70
75	46.0	45.5	45.2	44.4	43.2	42.1	41.0	40.0	38.9	38.0	36.9	75
80	42.1	41.6	41.2	40.7	40.0	38.9	37.8	36.9	35.9	34.9	33.9	80
85	38.7	38.3	37.8	37.4	36.9	36.0	34.9	34.1	33.2	32.1	31.2	85
90	35.8	35.4	35.0	34.5	34.1	33.5	32.4	31.5	30.6	29.7	28.8	90
95	33.3	32.8	32.4	32.0	31.5	31.1	30.1	29.2	28.3	27.6	26.7	95
100	31.0	30.4	30.1	29.7	29.2	28.9	28.0	27.2	26.3	25.6	24.7	100
105	28.8	28.4	28.0	27.5	27.1	26.8	26.2	25.3	24.4	23.8	22.9	105
110	27.0	26.5	26.1	25.7	25.2	25.0	24.5	23.6	22.7	22.1	21.2	110
115	25.3	24.8	24.5	24.1	23.6	23.3	22.8	22.1	21.2	20.5	19.6	115
120	23.7	23.3	23.0	22.5	22.1	21.7	21.3	20.6	19.7	19.1	18.2	120
125	22.4	21.9	21.5	21.0	20.6	20.2	19.9	19.1	18.4	17.8	16.9	125
130	21.0	20.6	20.1	19.7	19.3	19.0	18.6	17.9	17.2	16.6	15.7	130
135		19.4	18.9	18.6	18.2	17.8	17.4	16.7	16.1	15.4	14.5	135
140		18.3	17.8	17.5	17.1	16.7	16.3	15.6	15.0	14.3	13.4	140
145			16.8	16.4	16.0	15.7	15.3	14.6	14.0	13.3	12.4	145
150			15.8	15.6	15.1	14.7	14.3	13.6	12.9	12.3	11.6	150
155				14.6	14.1	13.8	13.4	12.7	12.1	11.4	10.8	155
160					13.3	13.0	12.6	11.9	11.2	10.6	9.9	160
165						12.2	11.8	11.1	10.4	9.8	9.1	165
170						11.5	11.1	10.4	9.8	9.1	8.4	170
175						10.7	10.4	9.8	9.1	8.4	7.8	175
180							9.7	9.1	8.4	7.8	7.1	180
185								8.5	7.8	7.1	6.3	185
190								8.0	7.3	6.6	5.3	190
195									6.6	6.0		195
200									6.1			200
Parts of line	5	5	4	4	4	3	3	3	3	2	2	Parts of line

In the interest of continual equipment development, SANY America, Inc. reserves the right to change these specifications at any time without prior notification. Refer to machine's load chart.  
Capacities are in Klb.

# SCA1350A | LOAD CHART OF H CONFIGURATION

Aux. hook, Boom 52~249ft, with main hook												
Boom length Radius (ft)	52	62	72	82	92	102	112	121	131	141	151	Boom length Radius (ft)
20	44.8	44.7	44.7									20
22	44.7	44.7	44.7									22
24	44.7	44.7	44.7	44.7	44.7	44.7						24
26	44.7	44.7	44.7	44.7	44.7	44.7						26
28	44.7	44.7	44.7	44.7	44.7	44.7	44.7	44.7	44.7			28
30	44.7	44.7	44.7	44.7	44.7	44.7	44.7	44.7	44.7	44.7	44.7	30
32	44.7	44.7	44.7	44.7	44.7	44.7	44.7	44.7	44.7	44.7	44.7	32
34	44.7	44.7	44.7	44.7	44.7	44.7	44.7	44.7	44.7	44.7	44.7	34
36	44.7	44.7	44.7	44.7	44.7	44.7	44.7	44.7	44.7	44.7	44.7	36
38	44.7	44.7	44.7	44.7	44.7	44.7	44.7	44.7	44.7	44.7	44.7	38
40	44.7	44.7	44.7	44.7	44.7	44.7	44.7	44.7	44.7	44.7	44.7	40
45	44.7	44.7	44.7	44.7	44.7	44.7	44.7	44.7	44.7	44.7	44.7	45
50	44.7	44.7	44.7	44.7	44.7	44.7	44.7	44.7	44.7	44.7	44.7	50
55		44.7	44.7	44.7	44.7	44.7	44.7	44.7	44.7	44.7	44.7	55
60			44.7	44.7	44.7	44.7	44.7	44.7	44.7	44.7	44.7	60
65			44.7	44.7	44.7	44.7	44.7	44.7	44.7	44.7	44.7	65
70				44.7	44.7	44.7	44.4	42.9	42.6	42.5	42.2	70
75				42.7	42.5	42.4	42.0	40.5	40.2	39.9	39.4	75
80					38.8	38.6	38.1	37.7	37.5	37.0	36.6	80
85					35.4	35.2	34.8	34.3	34.1	33.7	33.2	85
90						32.3	31.9	31.6	31.2	30.8	30.5	90
95							29.3	29.0	28.7	28.2	27.9	95
100							27.0	26.7	26.4	25.9	25.6	100
105								24.6	24.2	23.8	23.5	105
110								22.8	22.3	21.9	21.7	110
115									20.7	20.3	20.0	115
120										18.8	18.4	120
125											17.1	125
130											15.7	130
135											14.5	135
140												140
145												145
150												150
155												155
160												160
165												165
170												170
175												175
Parts of line	2	2	2	2	2	2	2	2	2	2	2	Parts of line

In the interest of continual equipment development, SANY America, Inc. reserves the right to change these specifications at any time without prior notification. Refer to machine's load chart.  
Capacities are in Klb.



# SCA1350A | LOAD CHART OF H CONFIGURATION

Aux. hook, Boom 52~249ft, with main hook											
Boom length Radius (ft)	161	171	180	190	200	210	220	230	239	249	Boom length Radius (ft)
20											20
22											22
24											24
26											26
28											28
30	44.7										30
32	44.7										32
34	44.7	44.7	44.7	44.7							34
36	44.7	44.7	44.7	44.7							36
38	44.7	44.7	44.7	44.7							38
40	44.7	44.7	44.7	44.7	44.7	44.7	44.7				40
45	44.7	44.7	44.7	44.7	44.7	44.7	44.7				45
50	44.7	44.7	44.7	44.7	44.7	44.7	43.6	42.9	42.2	41.6	50
55	44.7	44.7	44.7	44.7	43.8	43.5	42.0	40.7	39.4	37.4	55
60	44.3	44.3	44.2	44.1	41.7	41.1	39.9	38.3	36.8	33.4	60
65	42.3	41.9	41.5	40.7	38.9	38.2	36.9	35.8	34.8	30.5	65
70	40.0	39.4	38.4	37.3	35.9	34.9	33.7	32.6	31.8	28.2	70
75	37.6	36.7	35.4	34.3	33.0	31.9	30.8	29.7	28.8	26.2	75
80	35.0	33.9	32.6	31.5	30.4	29.3	28.2	27.1	26.1	24.4	80
85	32.3	31.4	30.1	29.0	27.9	27.0	25.9	24.8	23.9	22.8	85
90	29.9	29.4	28.0	26.8	25.8	24.8	23.9	22.7	21.9	20.9	90
95	27.5	27.1	26.2	24.8	24.0	22.8	21.9	20.9	20.1	19.1	95
100	25.1	24.8	24.4	23.0	22.4	21.2	20.3	19.3	18.4	17.3	100
105	23.1	22.7	22.4	21.3	20.9	20.0	18.9	17.6	16.7	15.8	105
110	21.2	20.8	20.6	20.0	19.5	19.0	18.1	16.6	15.4	14.5	110
115	19.5	19.2	18.9	18.4	18.1	17.6	16.8	15.7	14.4	13.5	115
120	18.0	17.7	17.3	16.9	16.6	16.2	15.3	14.7	13.5	12.6	120
125	16.6	16.2	16.0	15.5	15.1	14.9	14.0	13.3	12.6	11.8	125
130	15.3	15.0	14.6	14.2	13.9	13.5	12.8	12.1	11.3	10.6	130
135	14.1	13.8	13.4	13.0	12.7	12.3	11.6	11.0	10.2	9.4	135
140	13.0	12.7	12.3	11.9	11.6	11.2	10.5	9.9	9.2	8.3	140
145		11.7	11.3	10.8	10.4	10.2	9.5	8.9	8.2	7.3	145
150		10.7	10.3	9.8	9.6	9.2	8.5	7.9	7.2	6.5	150
155			9.4	9.0	8.7	8.3	7.6	7.0	6.3	5.7	155
160			8.6	8.1	7.9	7.5	6.8	6.1	5.5		160
165				7.3	7.1	6.7	6.0	5.3			165
170				6.6	6.2	6.0	5.1	4.7			170
175					5.5	5.3					175
Parts of line	2	2	2	2	2	2	2	2	2	2	Parts of line

In the interest of continual equipment development, SANY America, Inc. reserves the right to change these specifications at any time without prior notification. Refer to machine's load chart.  
Capacities are in Klb.