

## Telescopic Crawler Crane

# MODEL ECT80



Eco-friendly



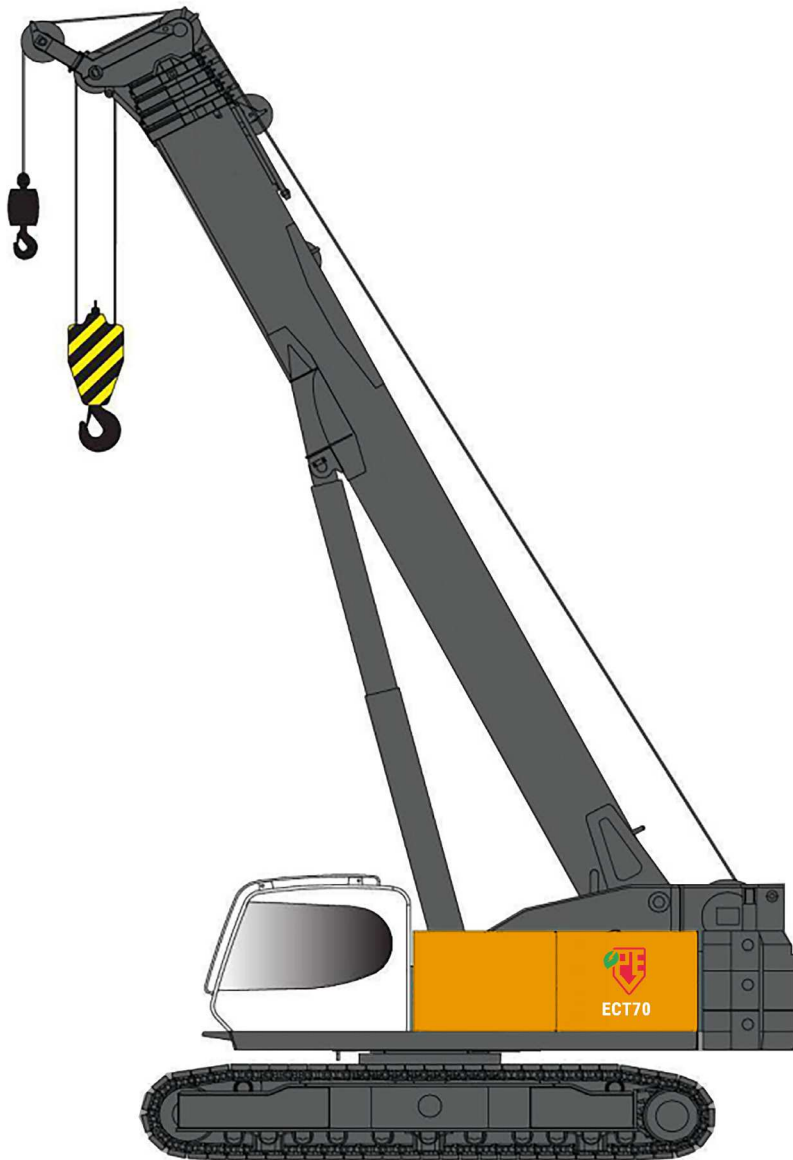
100% electric



Less noise



Zero emission



**PV-E Crane B.V.**  
Everdenberg 17  
4902 TT Oosterhout

+31 (0)184 - 425 949  
[www.pv-ecrane.com](http://www.pv-ecrane.com)  
[info@pv-ecrane.com](mailto:info@pv-ecrane.com)



**PV-E CRANE**

*Courtesy of CraneMarket.com*

# CONTENTS

---

<b>1 Features &amp; technical data</b>	<b>Pagina 3 t/m 4</b>
<b>2 Overall dimension</b>	<b>Pagina 5</b>
<b>3 Machine Configuration</b>	<b>Pagina 6</b>
<b>5 Notes for Load chart</b>	<b>Pagina 7</b>
<b>6 Working range-boom</b>	<b>Pagina 8</b>
<b>7 Boom load chart</b>	<b>Pagina 9</b>
<b>8 Working Range-Fixed fly jib</b>	<b>Pagina 10</b>
<b>9 Fixed fly jib load chart</b>	<b>Pagina 11 t/m 12</b>
<b>10 Transport, dimensions and weights</b>	<b>Pagina 13 t/m 16</b>

# FEATURES & TECHNICAL DATA

---



## Power system

150-200kW Elektromotor  
260kWh/650 volt battery pack  
(2 x 130kWh interchangeable)  
Lithium-iron-phosphate (LiFeP04)  
100% maintenance free and recycleble  
Work hours: 8 hours  
Fully recharged: 6 hour (63A)  
Active cooling system



## Hydraulic system

The hydraulic system is load sensor valve control system, the main pump is double variable pump, and main valve is 5 series M7 valve. The hoist mechanism, undercarriage adopt the variable system, and can realize stepless shift gears. Hydraulic oil tank capacity: 1350L.



## Boom device

Use the imported high strength steel plate, the U-type section lifting boom with fine designed and manufactured, the dynamics performance is much better. The telescopic mechanism is composed of cylinder and rope blocks, with better telescopic performance



## Self-assembly device

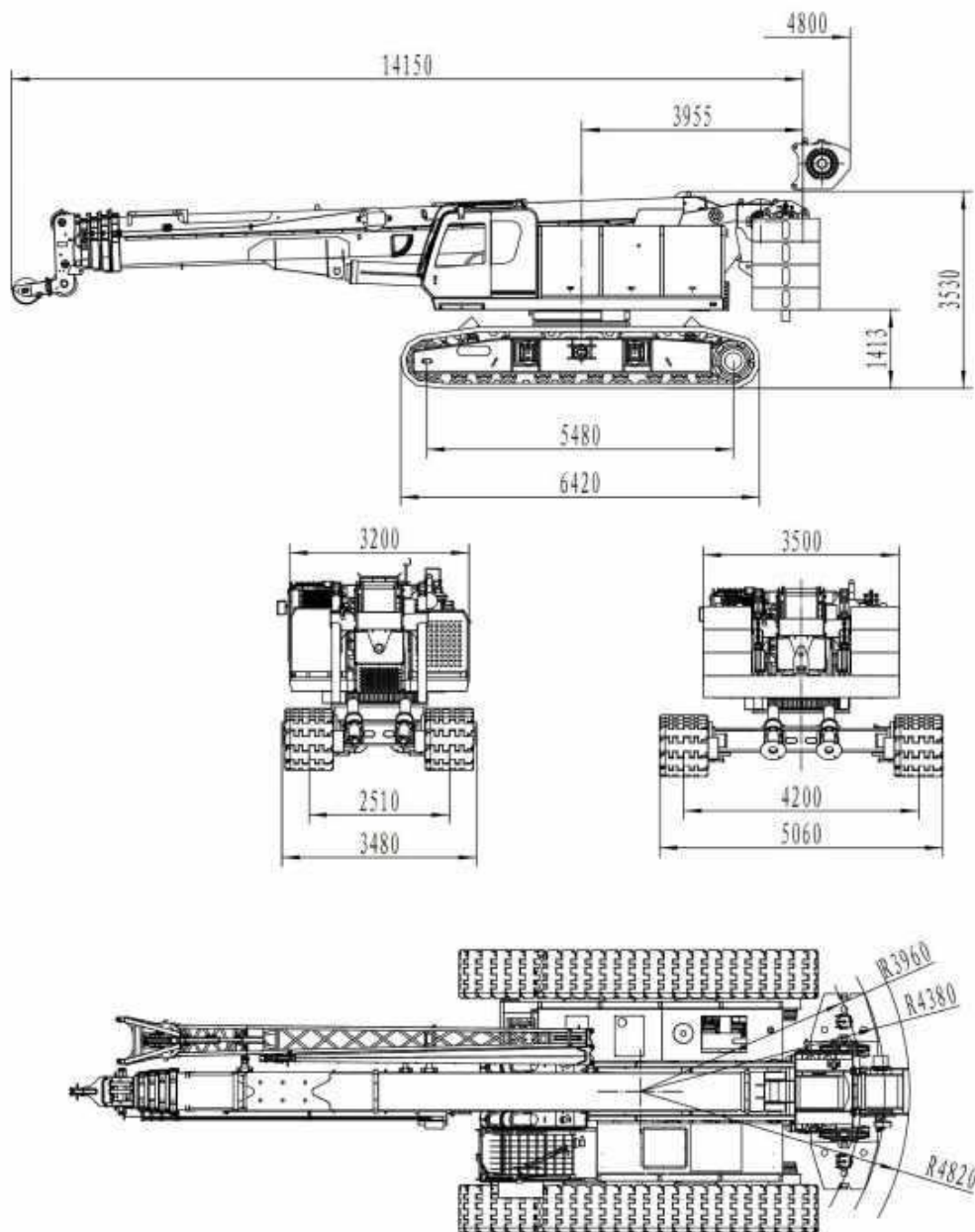
The superstructure is equipped with self-assembly cylinder and undercarriage is equipped with outrigger cylinder; The counterweight, track and extension frame can be realized with self-assembly function; High efficiency, safety and fast self-assembly function can fulfill the quick assembly/disassembly of whole crane.

# TECHNICAL DATA

Items	Unit	Data
Max. rated lifting capacity	t	80t
Boom length	m	11,68~44
Boom dericking angle	°	-2~80
Jib length	m	8/14
Angle between jib and boom	°	5/15/30
Rope speed	m/min	110
Slewing speed	r/min	0~1,8
Travel speed	Km/h	0~1,96
Rope diameter	mm	22
Main/aux.winch rope length	m/m	240/130
Rated single line pull	T(kN)	7,5(73,5)
Gradeability (boom retract, cabin at rear)	%	30
Crane mass	t	88t
Overall dimension	mm	15355 X 6050 X 3500
Ground bearing pressure	Mpa	0,09



# OVERALL DIMENSIONS



# MACHINE CONFIGURATION



Short runner	Long runner	Fixed jib
Max. lifting capacity: 80t x 3m	Max. lifting capacity: 7.5t x 3m	Max. lifting capacity: 7.5t x 3m
Max. boom combination: 44m	Max. boom combination: 44 + 0.68m	Max. boom combination: 44 + 14m

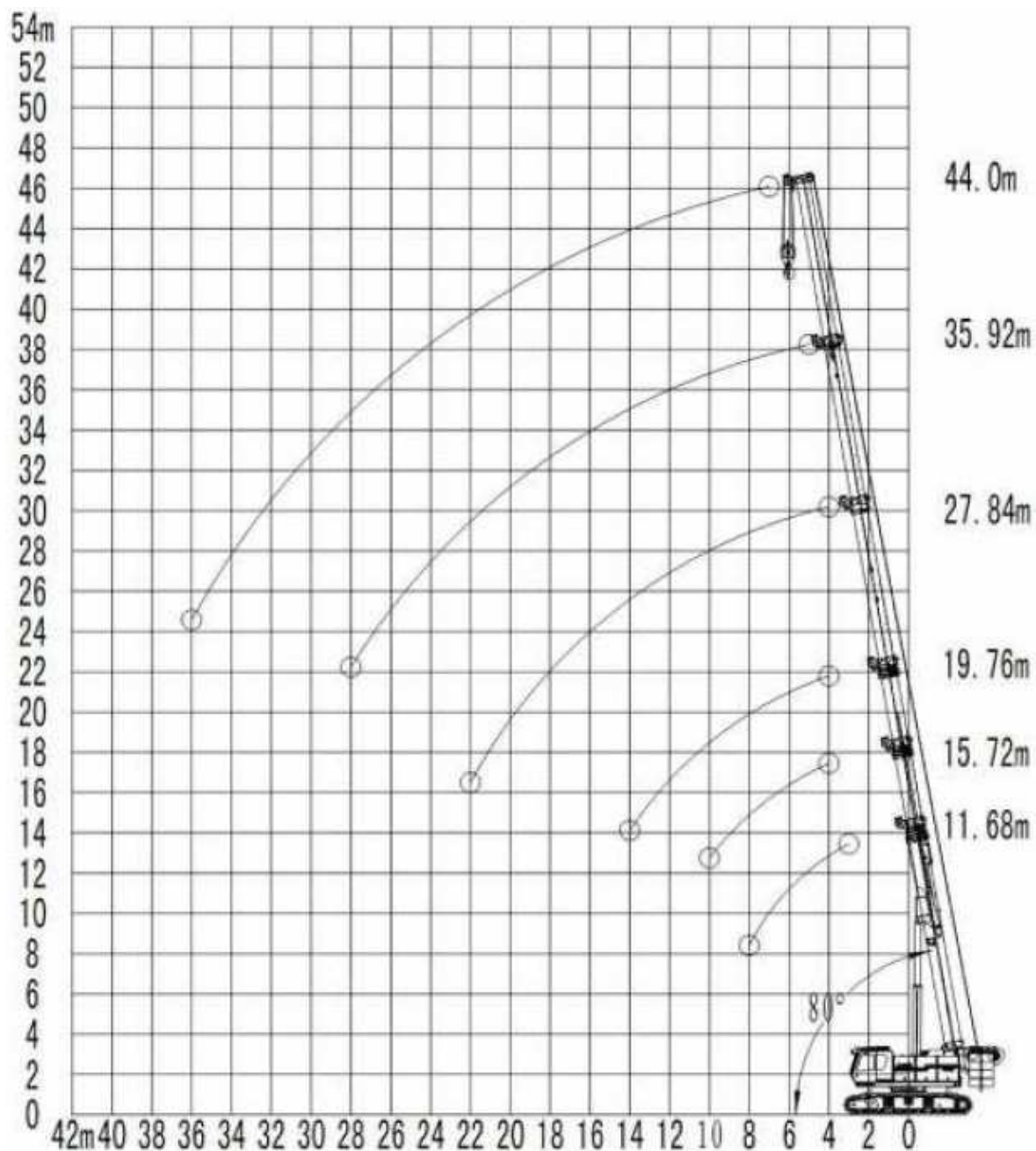
# NOTES FOR LOAD CHART

- 1** This crane is calculated according to EN13000 standard;
- 2** The lifting capacities are for reference only. For actual lifting capacities please refer to the load chart in the cabin or operation manual. The lifting capacities as stated are only valid for lifting activities.
- 3** The unit in the load chart is (t), working radius is (m), the value in the load chart should be deduct the self-weight of hooks, slings, etc.;
- 4** Only installed with boom, the max. allowed working speed is 13.8m/s, other working conditions max. allowed working wind speed <9.8m/s;
- 5** Only installed with boom, wind speed >21m/s (other working conditions >15m/s), and the boom should be placed flatly;
- 6** Use the auxiliary pulley block when the lifting capacity is more than 74.3t;
- 7** The value in load chart is calculated based on balance load, not including impact load under sudden stop, ground conditions, wind force load, operation speed and other effect, if under such conditions, and the operator must reduce the load;
- 8** Counterweight combination, hook selection, crane operation please refer to Operation Manual strictly;
- 9** When the undercarriage width is less than 4600mm, and it needs to slew, please operate according to Operation Manual.

Load	No. of sheaves	No. lines	Weight
80t	6	12	1180kg
9t	0	1	250kg



# WORKING RANGE-BOOM





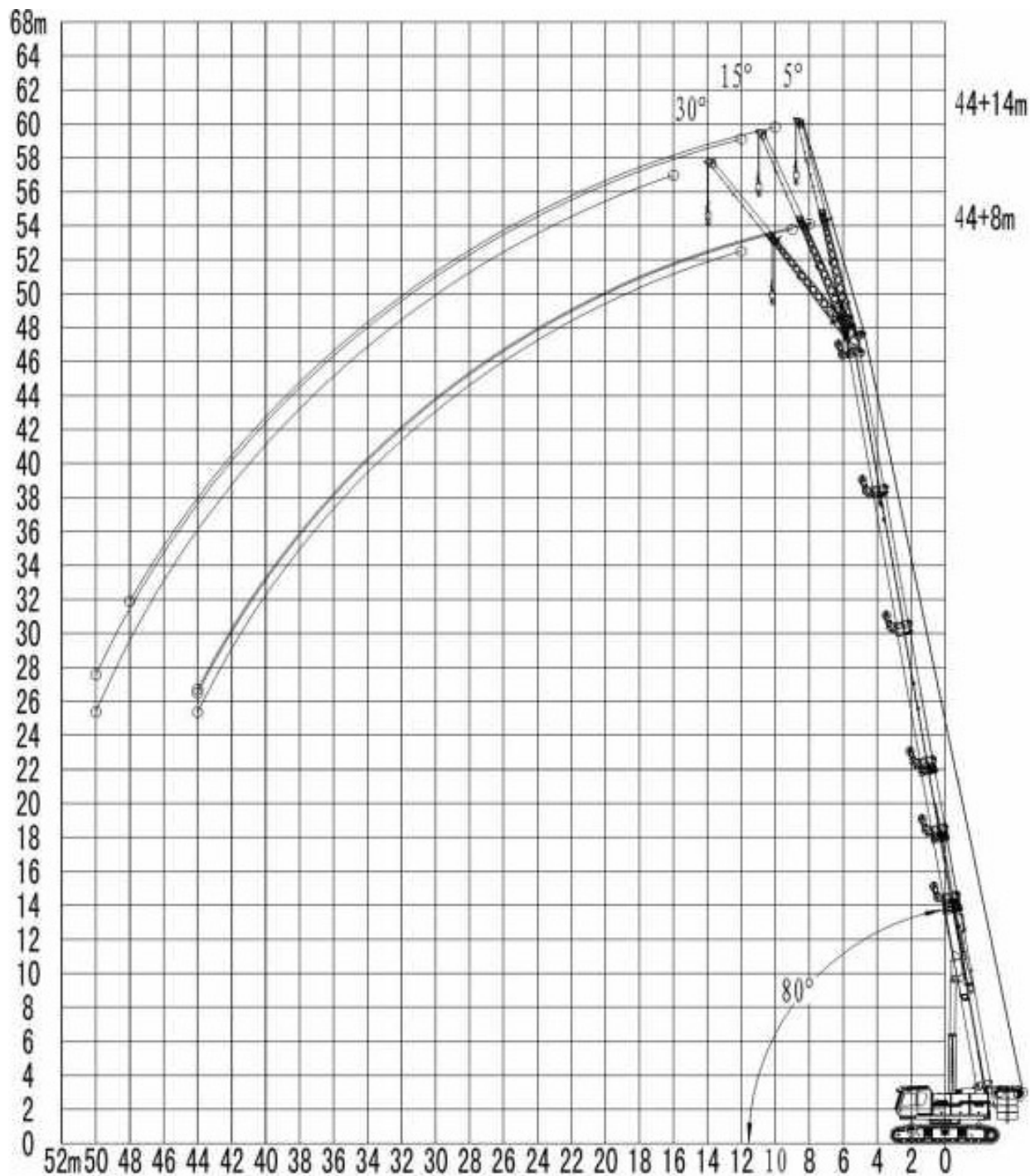
# BOOM LOAD CHART

Mainboom	Counterweights					
	24,5 ton					
Lengte/radius	11,68 m	15,72 m	19,76 m	27,84 m	35,92 m	44 m
3 m	80,00					
4 m	73,70	60,10	39,50	24,30		
5 m	62,50	54,10	35,10	24,30	18,60	
6 m	51,20	48,20	31,10	24,30	18,60	
7 m	39,60	37,50	27,70	22,60	18,60	10,50
8 m	31,90	30,50	24,60	20,90	17,10	10,50
9 m		25,60	21,80	19,30	15,70	10,50
10 m		21,90	19,40	17,80	14,50	10,50
12 m			15,30	14,90	12,50	9,80
14 m			12,20	12,30	10,90	9,50
16 m				9,80	9,60	9,20
18 m				8,20	8,00	7,70
20 m				7,00	6,80	6,50
22 m				6,10	5,80	5,60
24 m					5,10	4,80
26 m					4,40	4,20
28 m					4,00	3,70
30 m						3,30
32 m						2,90
34 m						2,60
36 m						2,40

\* Preliminary lifting table, may deviate after calculations / adjustments



# WORKING RANGE-FIXED FLY JIB



# FIXED FLY JIB LOAD CHART

Fixed JIB		Counterweights														
8 m		24,5 ton														
Length/radius	11,68 m			19,76 m			27,84 m			35,92 m			44 m			
	5°	15°	30°	5°	15°	30°	5°	15°	30°	5°	15°	30°	5°	15°	30°	
3 m	7,5															
4 m	7,5	7,5		7,5												
5 m	7,5	7,0		7,5	7,5		7,5									
6 m	7,0	6,4	5,4	7,5	7,5		7,5									
7 m	6,3	5,9	5,1	7,5	7,0	5,6	7,5	7,5		4,8						
8 m	5,7	5,5	4,8	7,5	6,6	5,3	7,5	7,4	5,7	4,8	4,8		4,8			
9 m	5,3	5,1	4,6	7,0	6,2	5,1	7,5	7,0	5,5	4,7	4,8		4,8	4,8		
10 m	4,9	4,8	4,4	6,5	5,9	4,9	6,9	6,7	5,3	4,7	4,8	4,8	4,8	4,8		
12 m	4,2	4,3	4,1	5,7	5,3	4,6	6,2	6,1	5,0	4,7	4,7	4,8	4,7	4,8	4,8	
14 m	3,7	3,9	3,8	5,0	4,8	4,3	5,6	5,6	4,7	4,7	4,7	4,7	4,7	4,8	4,8	
16 m	3,4	3,6	3,7	4,5	4,5	4,1	5,1	5,2	4,5	4,6	4,7	4,7	4,7	4,8	4,8	
18 m				4,1	4,2	3,9	4,7	4,9	4,3	4,6	4,7	4,6	4,7	4,8	4,7	
20 m				3,8	3,9	3,8	4,3	4,6	4,1	4,6	4,6	4,4	4,7	4,7	4,7	
22 m				3,5	3,7	3,7	4,0	4,3	4,0	4,6	4,6	4,3	4,7	4,7	4,5	
24 m							3,8	4,1	3,9	4,5	4,6	4,2	4,6	4,7	4,4	
26 m							3,6	3,9	3,8	4,5	4,4	4,0	4,6	4,7	4,3	
28 m							3,4	3,7	3,7	4,2	4,2	3,9	4,6	4,7	4,2	
30 m								3,6	3,7	3,8	3,9	3,8	3,9	4,1	4,1	
32 m										3,3	3,3	3,4	3,4	3,5	3,6	
34 m										2,8	2,9	2,9	2,9	3,0	3,1	
35 m										2,4	2,4	2,5	2,5	2,6	2,7	
38 m													2,2	2,2	2,3	
40 m													1,8	1,9	1,9	
42 m													1,5	1,6	1,6	
													1,3	1,3	1,3	

\* Preliminary lifting table, may deviate after calculations / adjustments



# FIXED FLY JIB LOAD CHART

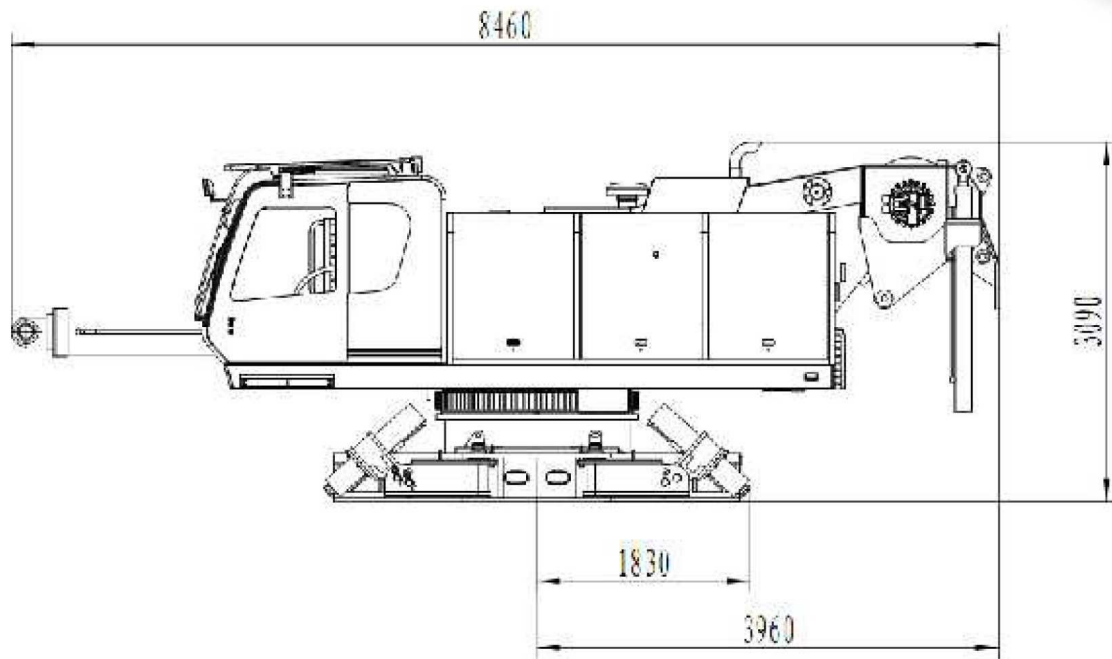
Fixed JIB		Counterweights														
14 m		24,5 ton														
Lengte/radius		11,68 m			19,76 m			27,84 m			35,92 m			44 m		
		5°	15°	30°	5°	15°	30°	5°	15°	30°	5°	15°	30°	5°	15°	30°
3 m																
4 m	6,1															
5 m	5,3				6,5											
6 m	4,7	4,3			5,8											
7 m	4,2	3,9			5,3			6,2								
8 m	3,8	3,6			4,8	4,1		5,7			4,8					
9 m	3,5	3,4	2,9		4,4	3,9		5,2	4,3		4,7					
10 m	3,2	3,1	2,7		4,1	3,6		4,9	4,0		4,6	4,4		4,8		
12 m	2,8	2,7	2,5		3,5	3,3	2,7	4,2	3,7	2,9	4,5	4,0		4,7	4,3	
14 m	2,4	2,4	2,3		3,1	2,9	2,5	3,8	3,3	2,7	4,4	3,7	2,8	4,5	3,9	
16 m	2,1	2,2	2,1		2,8	2,7	2,3	3,4	3,1	2,5	3,9	3,4	2,7	4,4	3,7	2,8
18 m	1,9	2,0	1,9		2,5	2,5	2,2	3,0	2,6	2,4	3,6	3,2	2,6	4,1	3,4	2,7
20 m	1,7	1,8	1,8		2,2	2,3	2,1	2,8	2,6	2,3	3,3	2,9	2,4	3,7	3,2	2,6
22 m		1,7	1,8		2,0	2,1	2,0	2,5	2,5	2,2	3,0	2,8	2,3	3,4	3,0	2,5
24 m					1,9	2,0	1,9	2,3	2,3	2,1	2,8	2,6	2,2	3,2	2,9	2,4
26 m					1,7	1,8	1,8	2,2	2,2	2,0	2,6	2,5	2,2	3,0	2,7	2,3
28 m					1,6	1,7	1,8	2,0	2,0	1,9	2,4	2,3	2,1	2,8	2,6	2,2
30 m								1,9	1,9	1,9	2,2	2,2	2,0	2,6	2,5	2,1
32 m								1,8	1,8	1,8	2,1	2,1	1,9	2,4	2,3	2,1
34 m								1,6	1,8	1,8	2,0	2,0	1,9	2,3	2,2	2,0
35 m									1,7	1,7	1,9	1,9	1,8	2,2	2,2	2,0
38 m											1,8	1,8	1,8	2,1	2,1	1,9
40 m											1,7	1,8	1,8	1,9	2,0	1,9
42 m											1,5	1,6	1,6	1,6	1,7	1,8
44 m														1,3	1,4	1,5
46 m														1,1	1,1	1,2
48 m														0,8	0,9	1,0
50 m															0,7	0,7

\* Preliminary lifting table, may deviate after calculations / adjustments

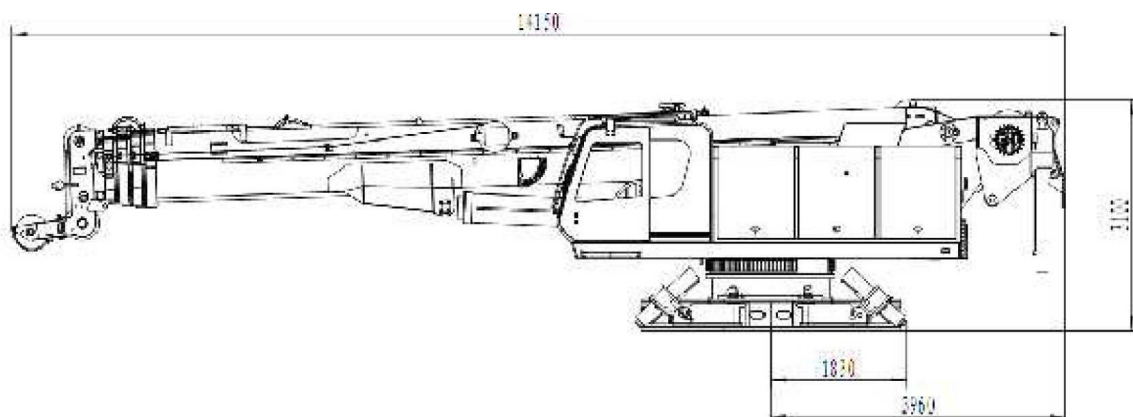


# TRANSPORT, DIMENSIONS & WEIGHTS

Without counterweight, track frame, winch 2, main boom



Without counterweight, track frame, winch 2

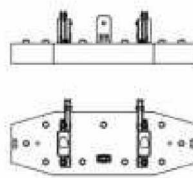


# TRANSPORT, DIMENSIONS & WEIGHTS



## Part A

Length: 880mm  
Width: 1200mm  
Height: 470mm  
Weight: 2,3t



## Part B

Length: 3500mm  
Width: 1440mm  
Height: 1000mm  
Weight: 10,7t



## Winch 2

Length: 1050mm  
Width: 1360mm  
Height: 900mm  
Weight: 1,6t

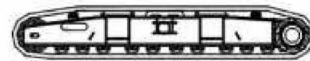


	Part A	Part B
0	0x	0x
24,5	6x	1x



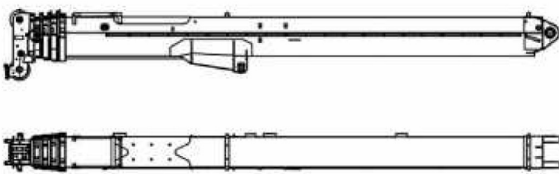
## Short runner

Length: 690mm  
Width: 540mm  
Height: 480mm  
Weight: 0,1t



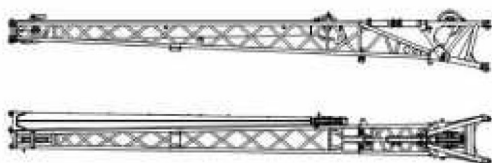
## Crawler

Length: 6420mm  
Width: 1270mm  
Height: 1105mm  
Weight: 11t



## Main boom

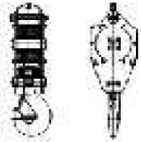
Length: 12220mm  
Width: 840mm  
Height: 1570mm  
Weight: 10,8t



## Fixed jib

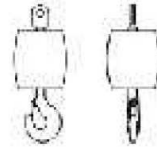
Length: 8510mm  
Width: 920mm  
Height: 1100mm  
Weight: 1,2t

# TRANSPORT, DIMENSIONS & WEIGHTS



## 80t Hock

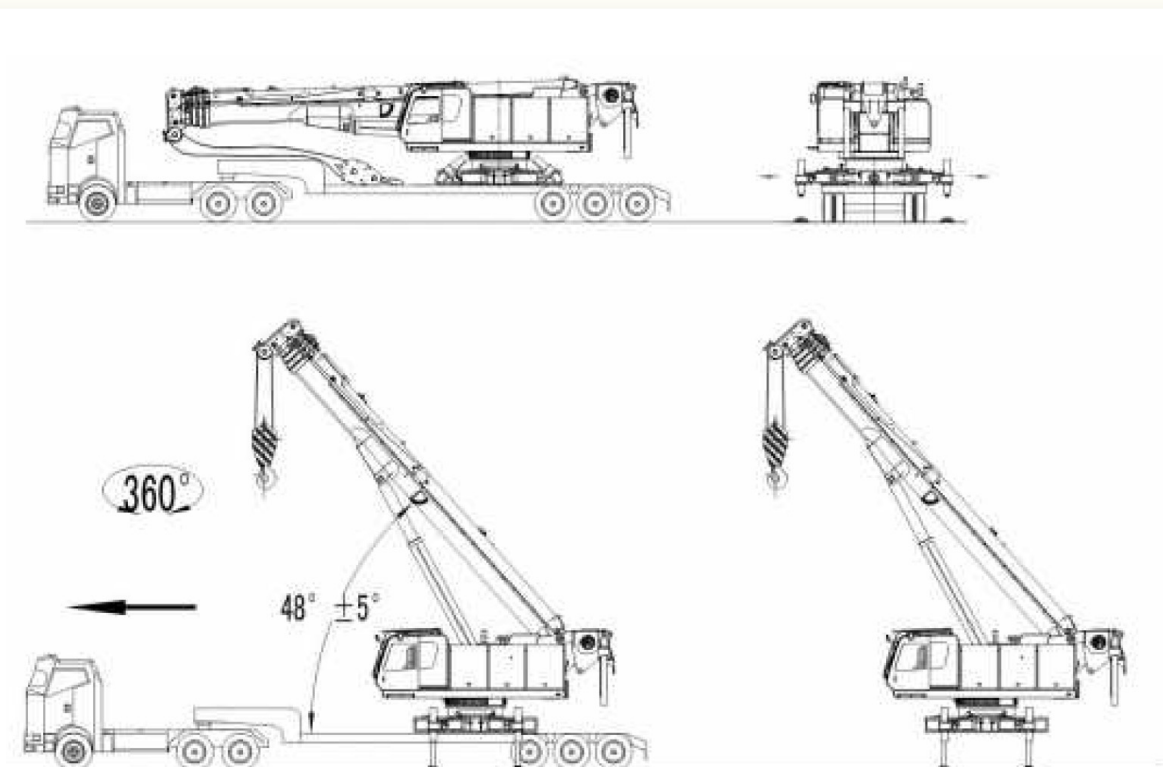
Length: 3500mm  
Width: 1440mm  
Height: 1000mm  
Weight: 10,7t



## 9t Hock

Length: 3500mm  
Width: 1440mm  
Height: 1000mm  
Weight: 10,7t

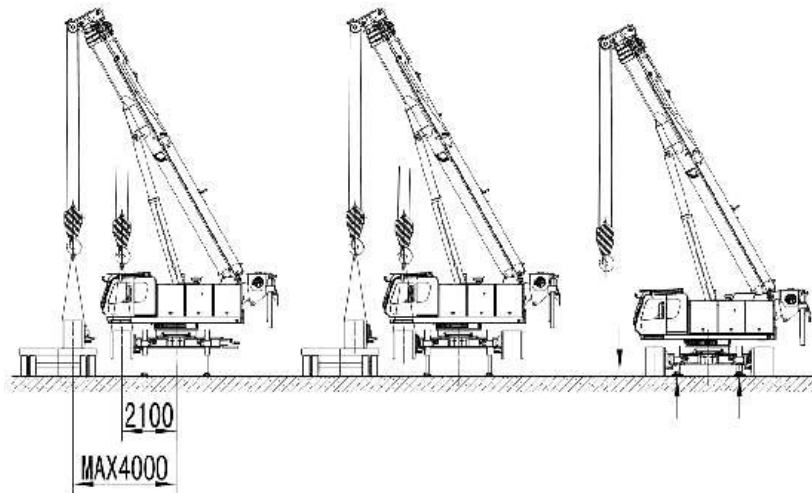
**Under the trailer, transportation width: 3200mm,  
transportation weight: 40.5t. Width:3200mm, Weight:40.5t**



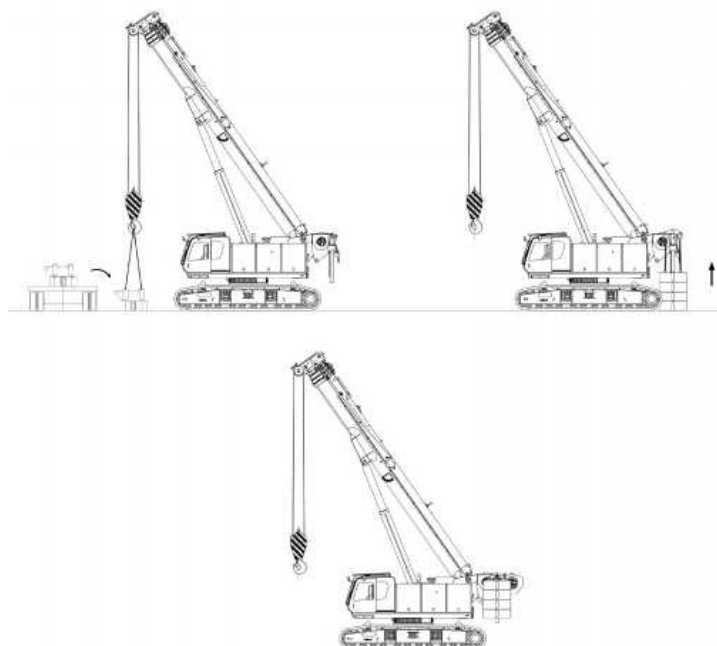


# TRANSPORT, DIMENSIONS & WEIGHTS

## Crane assembly



## Counterweight Assembly







# PV-E CRANE

**PV-E Crane B.V.**

Everdenberg 17

4902 TT Oosterhout

The Netherlands

+31 (0)184 - 425 949

[www.pv-ecrane.com](http://www.pv-ecrane.com)

[info@pvecrane.com](mailto:info@pvecrane.com)

## THE NEW STANDARD IN ELECTRIC CRAWLER CRANES

