

Electric Crawler Crane

# MODEL EC135



Eco-friendly



100% electric



Less noise



Zero emission



**PV-E Crane B.V.**  
Everdenberg 17  
4902 TT Oosterhout

+31 (0)184 - 425 949  
[www.pv-ecrane.com](http://www.pv-ecrane.com)  
[info@pv-ecrane.com](mailto:info@pv-ecrane.com)



**PV-E CRANE**

*Courtesy of CraneMarket.com*

# PV-E CRANE

We, PV-E Crane B.V., are pleased to offer you our electric crawler crane EC Series. All models from the crane PV-E Crane EC series are equipped with an electric motor with a power of 150KW or 200kW and exchangeable battery packs with a total capacity of 260kWh.

With the standard version, you can work for 8 hours without a plug. If extra working hours are required, this can easily be done by renting or buying an extra battery pack.

The two battery packs are based on lithium iron phosphate batteries (LiFePO4) and are built according to the latest developments in traction cell technology and have many advantages:

- Safe
- Chemically stable
- Long lifespan
- Can be charged from any charge level without shortening lifespan
- Not subject to memory problems
- Efficient

Charging with 45kWh per hour from a 63 Amp connection means less than 3 hours per battery (130kWh) of full charging from empty to full.

Moreover, (LiFePO4) batteries are 100% maintenance-free and do not need to be topped up with demineralized water like conventional lead-acid batteries, for example. They are 100% recyclable because they do not contain any acids or heavy metals.

An external diagnostic system gives you access to the crane's electronics to read the required data of the crane from your office.



## Battery pack

PV-E Crane Battery Powered



## Electric motor

PV-E Crane Battery Powered



## Electronic control system

PV-E Crane Battery Powered

# CONTENTS

---

<b>1 Technical data</b>	<b>Pagina 4</b>
<b>2 Notes</b>	<b>Pagina 5</b>
<b>3 Specifications</b>	<b>Pagina 6</b>
<b>4 Features</b>	<b>Pagina 7</b>
<b>5 Dimensions</b>	<b>Pagina 8</b>
<b>6 Basic configuration</b>	<b>Pagina 9</b>
<b>7 Machine configuration</b>	<b>Pagina 10</b>
<b>8 Dimensions</b>	<b>Pagina 11 t/m 12</b>
<b>9 Working radius   Main boom</b>	<b>Pagina 13</b>
<b>10 Load chart   Main boom</b>	<b>Pagina 14</b>
<b>11 Working radius   Runner</b>	<b>Pagina 15</b>
<b>12 Load chart   Runner</b>	<b>Pagina 16</b>
<b>13 Working radius- Fixed Jib</b>	<b>Pagina 17</b>
<b>14 Load Chart - Fixed Jib</b>	<b>Pagina 18 t/m 22</b>
<b>15 Working Radius   Luffing Jib</b>	<b>Pagina 20</b>
<b>16 Load Chart   Luffing Jib</b>	<b>Pagina 24 t/m 35</b>
<b>17 Main boom configurations</b>	<b>Pagina 36</b>
<b>18 Fixed jib and luffing jib configurations</b>	<b>Pagina 37</b>
<b>19 Transport   Dimensions and weights</b>	<b>Pagina 38 t/m 42</b>
<b>20 Self-assembly</b>	<b>Pagina 43</b>



# TECHNICAL DATA

Items	Unit	Data
Max. rated lifting capacity	t	135@5m
Mainboom length	m	18-75
Fixed jib Length	m	13-31
Mainboom + fly jib max. lenght	m	63+31
Mainboom + luffing jib max. lenght	m	48,5+49
Runner jib	t	12,5
Boom dericking angle	°	30-84
Hook blocks	t	135/80/25/12,5
Main winch hoist, lower (rope dia 26mm)	m/min	120
Aux. winch hoist lower (rope dia 26mm)	m/min	120
Boom hoist lower (rope dia 26mm)	m/min	48
Swing speed	r/min	2,7
Travel speed	Km/h	0-0, 78/0-1,15
Reevings		12
Single line pull	t	12,5
Electro motor	kW	200
Accu (lithium iron phosphate)	kWh	260
Swing radius	mm	5530
Transport dimension	mm	13680x3300x3300
Crane mass (with basic boom, 135t hook)	t	130
Ground bearing pressure	Mpa	0,08
Counterweight	t	54



# NOTES | LOAD

- 1** The load charts are calculated according to EN13000.
- 2** The lifting capacities are for reference only. For actual lifting capacities please refer to the load chart in the cabin or operation manual. The lifting capacities as stated are only valid for lifting activities.
- 3** The rated loads shown are based on the machine on firm horizontal ground level.
- 4** The weights of the lifting accessoires (Hook Blocks, ropes, chains etc.) have to be deducted from the load capacities mentioned.
- 5** The maximum windspeed allowed can be selected within the software of the momentlimiter.
- 6** The radius will be calculated from the center of the machine to the position under the load.
- 7** The lifting capacities apply to 360 degree working.
- 8** Weights mentioned can vary depending on the scope of supply of the specific machine delivered, the content of the tank and the general acceptable tolerances.
- 9** The images in this brochure can show options which are not standard.

Jib length (m)	13	19	25	31	Runner
Weight (t)	1,5	1,7	1,9	2,1	0,2

Hook	Reevings Self-Weight (t)	Reevings and max. lifting capacities (t)											
		12	11	10	9	8	7	6	5	4	3	2	1
135t	2.809	120	110	100	90	80	70	60	50	40	30	20	10
80t	1.030					80	70	60	50	40	30	20	10
25t	0,435											20	10
12,5t	0,328												10



# SPECIFICATIONS

---



## ENGINE

200kWh electro motor



## HYDRAULIC SYSTEM

Rextroth main pump

ISO standard

Capacity oil tank: 540L



## BATTERY PACK

2 x 130 kWh = total 260kWh / 650 volt

Standard 8 working hours disconnected from the grid

Interchangeable battery pack

Rechargeable in 3 hours (63A) per battery (130kWh)

Active Cooling



## CERTIFICATIONS

CE - product complies with the European requirements in the field of safety, health and the environment

EMC - Electromagnetic compatibility



## MOMENT LIMITER

Hirschmann



## ADVANTAGES

100% Fuel saving

100% NOX free

100% CO2 free

100% Electric

100% SSSST....

# FEATURES

---

## SWING SYSTEM

Inner gearing swing drive, independent closing system 360 rotation. Swing lock: hydraulic swing locking, ensure to lock the upper structure when finish the operation and during transportation. Swing float: make sure the boom center and gravity of load be in the same plane. To avoid wiggle happens after lifting the load. Brake: automatic brake mode; spring applied, hydraulically released disc brakes.

## SWING SYSTEM

Extreme durable and lean design, fully computer aided designed and optimized.

Made of high grade steel for long life time. All components are well organized mounted.

In the spacious engine and hydraulic compartments.

Excellent access by large doors for easy maintenance. Cover top plates made of aluminum to offer anti-skid safety and resist sun and rain.

Counterweight: 54t

## ELECTRIC SYSTEM

24Volt system with comprehensive layout and high grade wiring.

Premium quality connectors and switches for best safety and reliability. Well organized electric switch board in sliding box for easy maintenance.

## MAIN WINCH 1&2

Each winch is driven independently by a hydraulic piston motor. Each motor is equipped with counterbalance valves to provide controlled load lowering and prevent accidental load drop if the hydraulic pressure is suddenly lost.

Automatic brake mode, spring applied, hydraulically released, multiple-disc type brake. Drum: line type drum, to ensure no rope disorder even when more layers.

### Winch 1 & 2

Single line pull: 12,54t

Rope diameter: 26 mm

Line speed: 0-120m/min

## DERRICKING WINCH

Driven independently by a hydraulic piston motor provided with counterbalance valves.

Automatic brake made, spring applied, hydraulically released, disc type brake.

Mechanical drum pawl lock supplies full orientation brake.

### Derricking winch

Single line pull: 10t

Rope diameter: 22 mm

Line speed: 48m/min

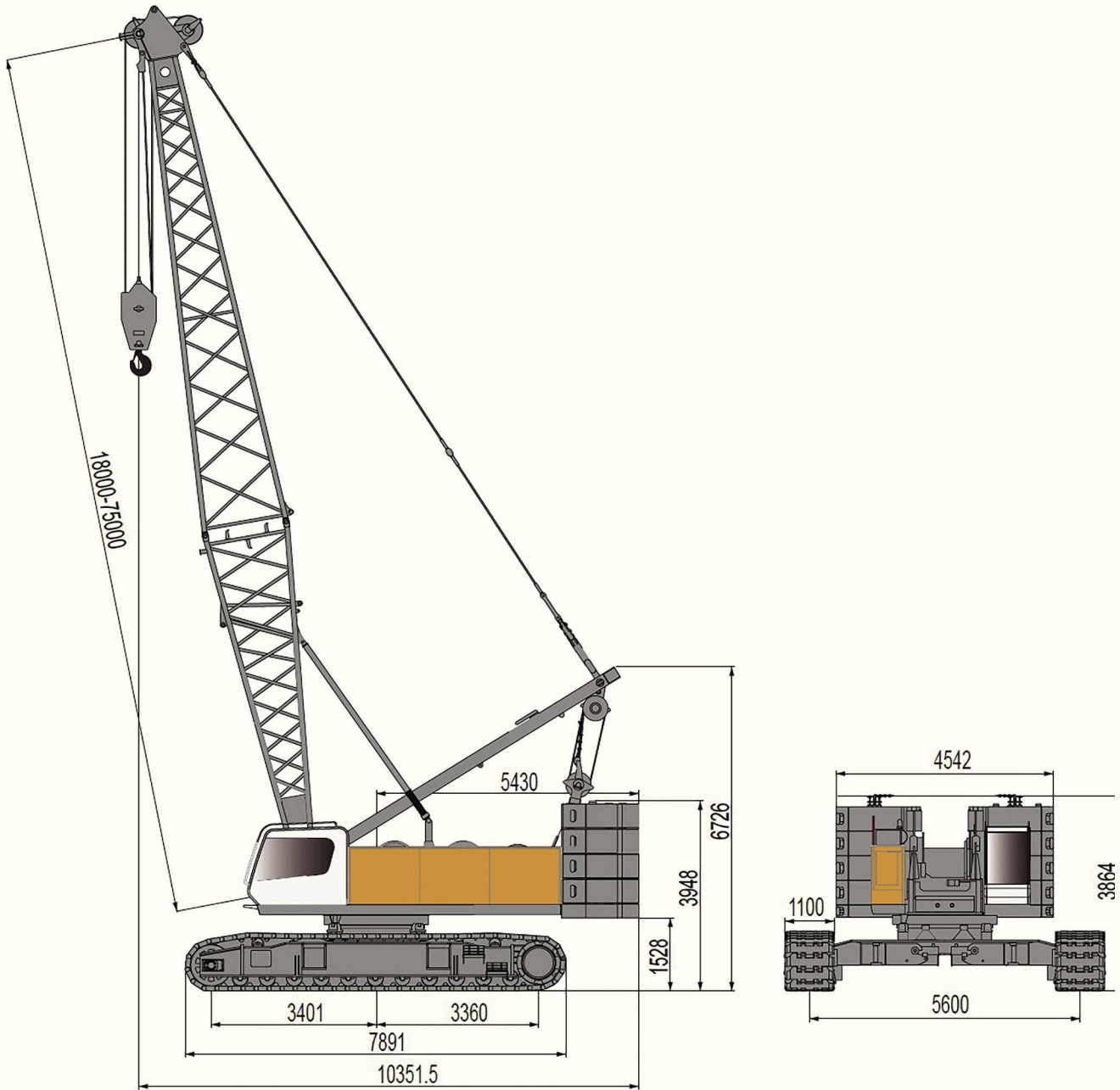
## UNDERCARRIAGE

Each track is independently driven by a hydraulic piston motor. Spring loaded hydraulically releasable automatic type, disc brake.

Traveling speed: 0-1,33km/h



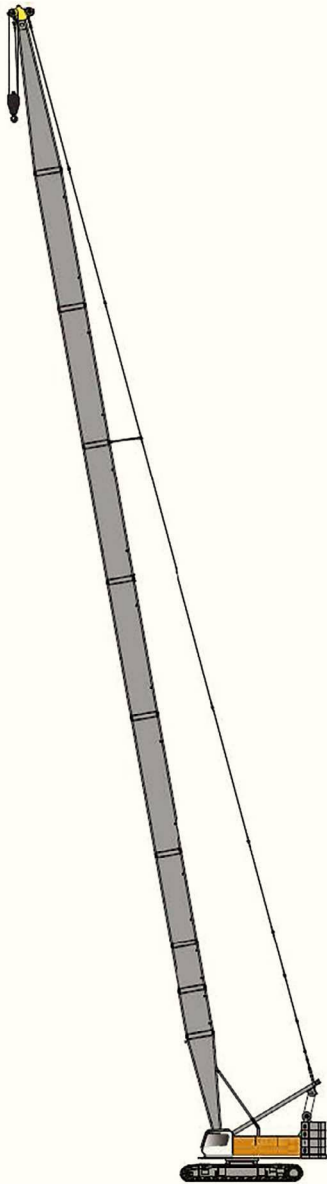
# DIMENSIONS





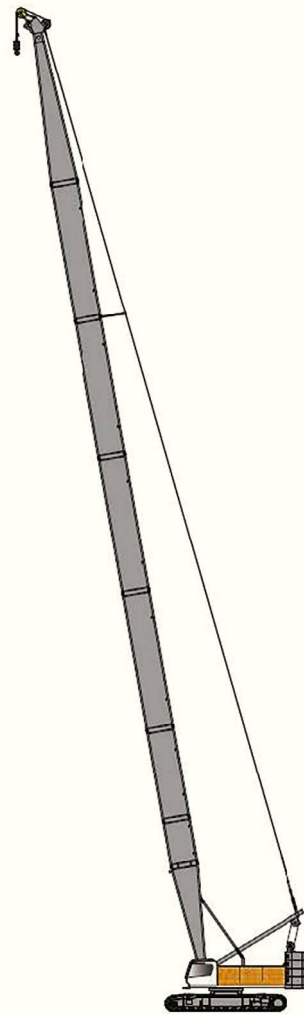
# MAIN BOOM & RUNNER CONFIGURATION

---



## MAIN BOOM

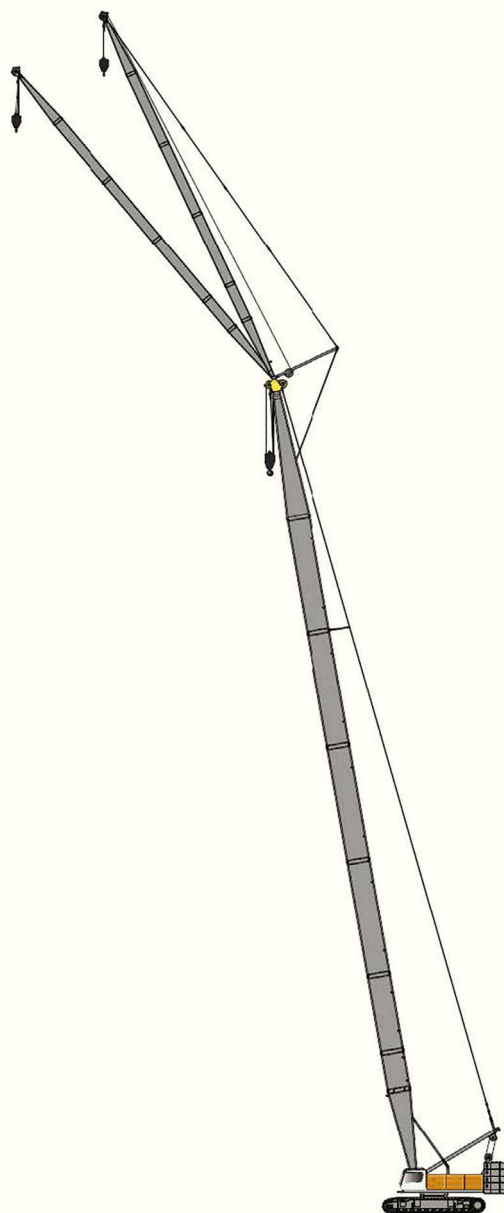
Max. lifting capacity: 135t x 5m  
Max. Boom length: 75m



## RUNNER

Max. lifting capacity: 12t x 16m  
Max. boom length: 63m

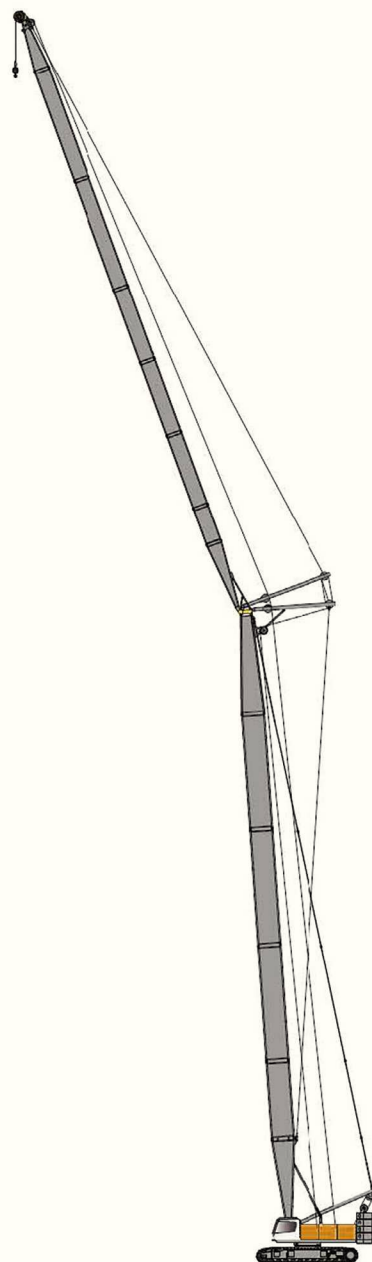
# FIXED JIB AND LIFFING JIB CONFIGURATION



## FIXED JIB

Max. lifting capacity : 14.6t x 14m

Max. boom length : 63m + 31m

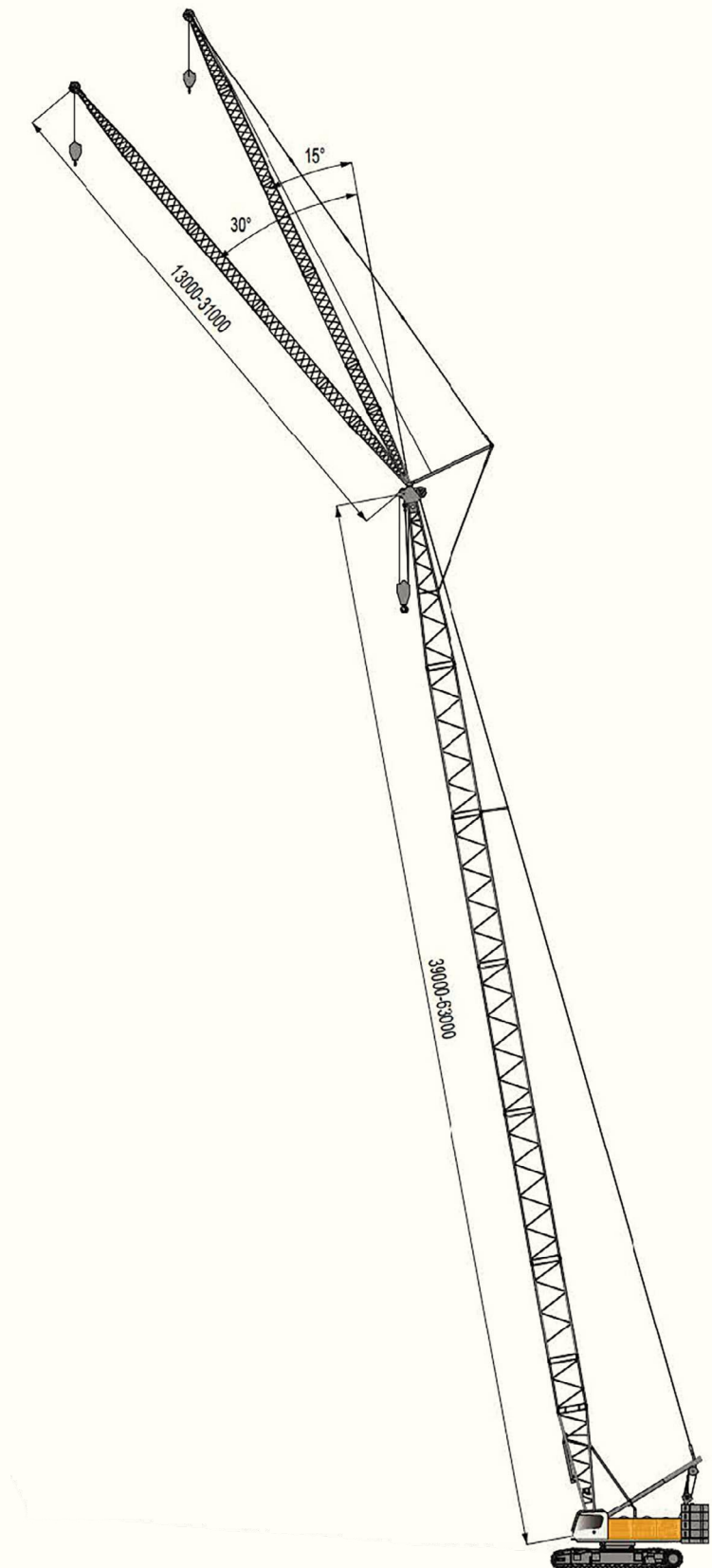


## LUFFING JIB

Max.lifting capacity : 34t x 12m

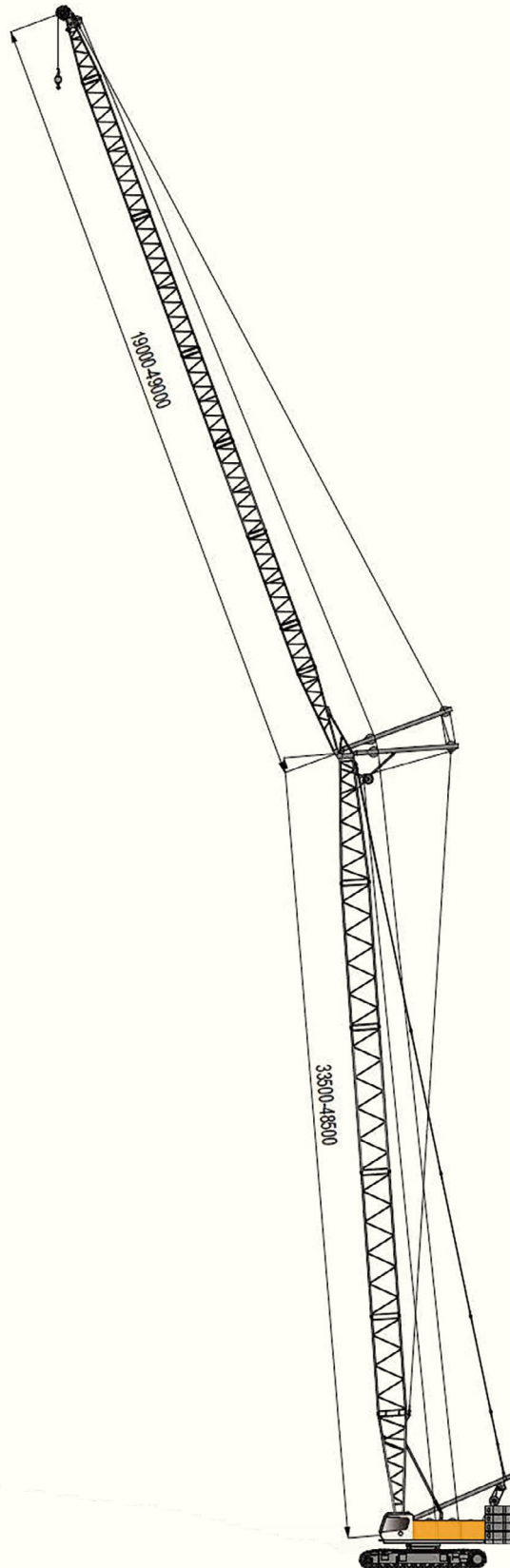
Max. boom length : 48.5m + 49m

# FIXED JIB DIMENSIONS

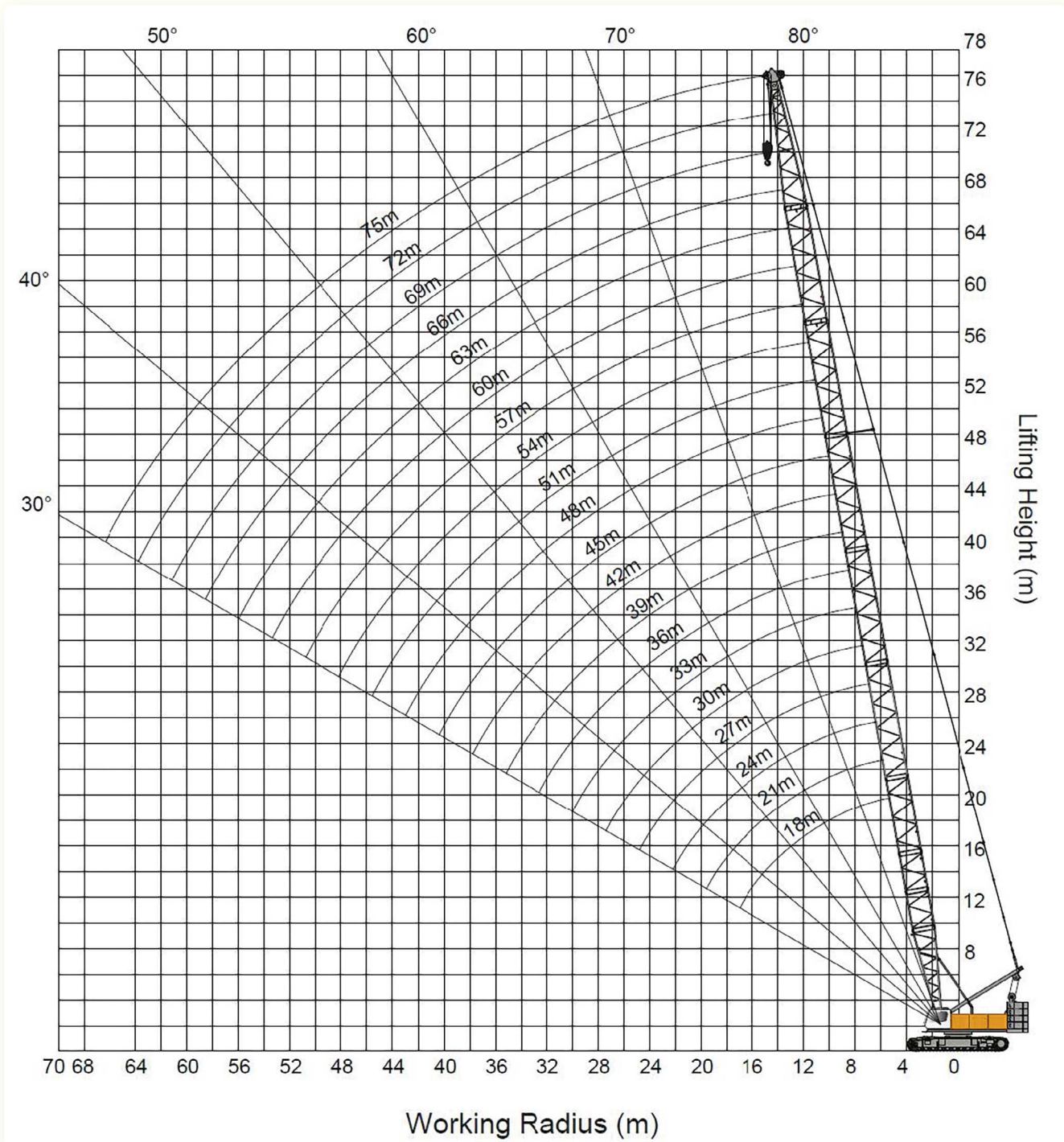


# LUFFING JIB DIMENSIONS

---



# WORKING RADIUS | MAIN BOOM



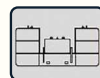
# LOAD CHART | MAIN BOOM



18m - 75m



360°



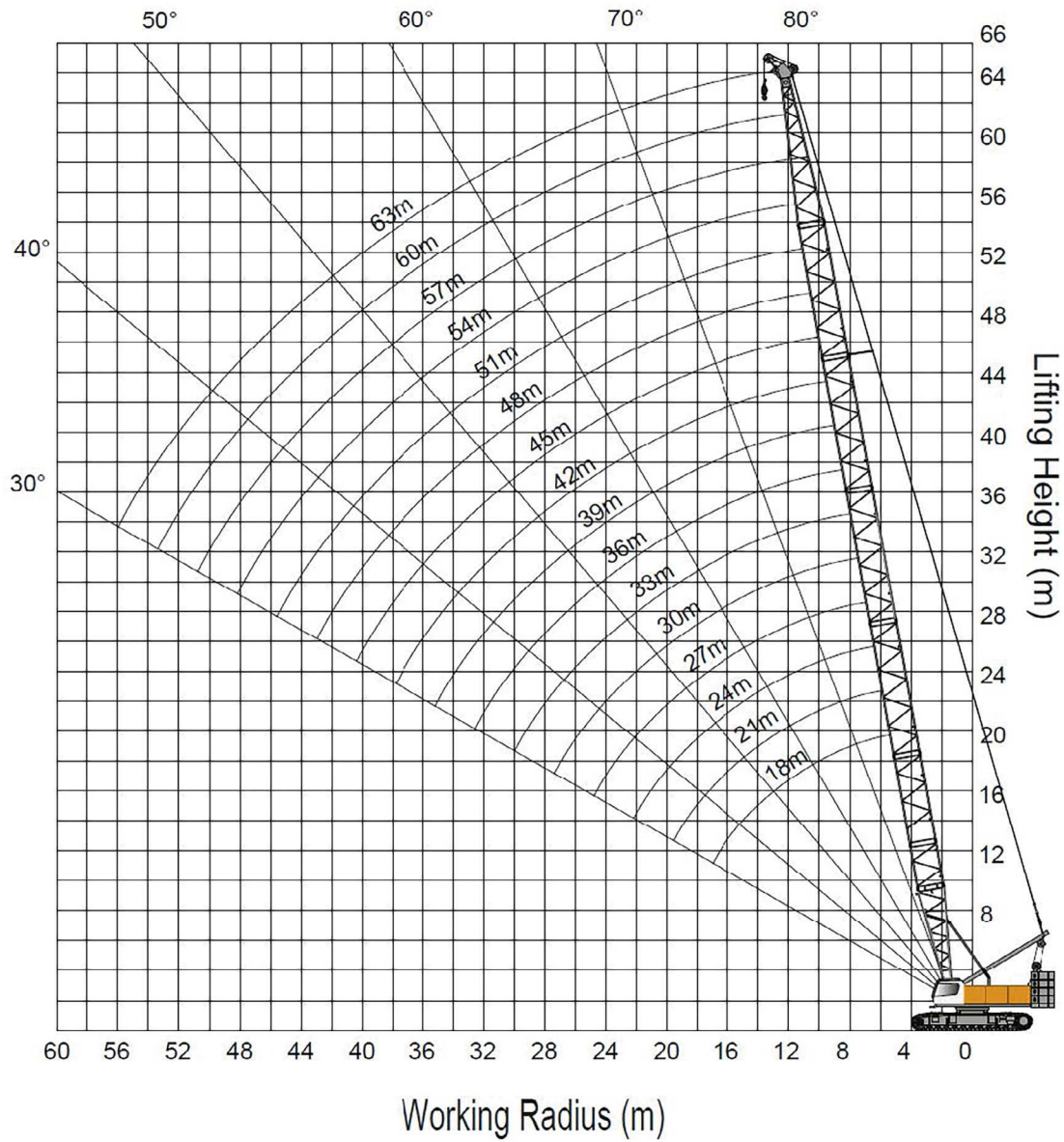
54t

Length(m) Radius(m)	18.0m	24.0m	30.0m	36.0m	42.0m	48.0m	54.0m	60.0m	66.0m	72.0m	75.0m
4.0m	135/4.92										
5.0m	135.0	120/5.96									
6.0m	120.0	120.0									
7.0m	110.0	109.0	90.0								
8.0m	88.9	89.0	90.0	78/8.05							
9.0m	78.0	75.6	88.6	72.6	66.5/9.09						
10.0m	67.5	65.5	63.2	63.1	61.8	56/10.1	45/11.2				
12.0m	51.8	51.7	50.3	48.6	48.4	48.1	45.0	36/12.2	29/13.3		
14.0m	41.7	41.9	41.5	40.2	39.1	38.8	38.6	36.0	29.0	21.4/14.3	
16.0m	34.8	34.9	34.8	33.9	33.1	33.0	32.7	31.8	29.0	20.6	18.2
18.0m	30.16/17.2	29.8	29.7	29.3	28.6	28.4	28.3	27.0	26.8	19.6	17.4
20.0m		25.9	25.8	25.4	25.0	24.8	24.6	23.7	23.0	18.7	16.5
22.0m		22.8	22.7	22.3	22.2	21.8	21.6	21.0	20.6	18.0	15.8
24.0m		21.25/22.4	20.2	19.8	19.6	19.3	19.0	18.5	18.2	17.5	15.1
26.0m			18.0	17.7	17.6	17.2	16.9	16.4	16.2	15.6	14.4
28.0m			15.83/27.6	15.9	15.8	15.4	15.2	14.7	14.6	14.0	13.5
30.0m				14.4	14.3	13.9	13.5	13.0	13.0	12.6	12.2
32.0m				13.0	12.9	12.5	12.4	12.0	11.7	11.4	11.0
34.0m				12.32/32.8	11.8	11.4	11.2	10.8	10.6	10.3	9.9
36.0m					10.8	10.5	10.3	9.8	9.5	9.2	8.8
38.0m					9.9	9.5	9.4	9.0	8.7	8.3	8.0
40.0m						8.7	8.6	8.2	7.9	7.5	7.3
42.0m						8.0	7.9	7.4	7.3	7.0	6.5
44.0m						7.587/43.2	7.3	6.9	6.5	6.2	6.0
46.0m							6.5	6.3	6.0	5.7	5.4
48.0m							6.0	5.8	5.6	5.2	4.9
50.0m							5.954/48.4	5.3	5.0	4.8	4.5
52.0m								4.9	4.6	4.4	4.1
54.0m								4.575/53.6	4.3	4.0	3.7
56.0m									3.9	3.6	3.3
58.0m									3.6	3.3	3.1
60.0m									3.3/58.8	2.9	2.7
62.0m										2.7	2.4
64.0m										2.4	2.1





# WORKING RADIUS | RUNNER



\* Preliminary lifting table, may deviate after calculations / adjustments



# LOAD CHART | RUNNER



25m - 61m



360°



54t

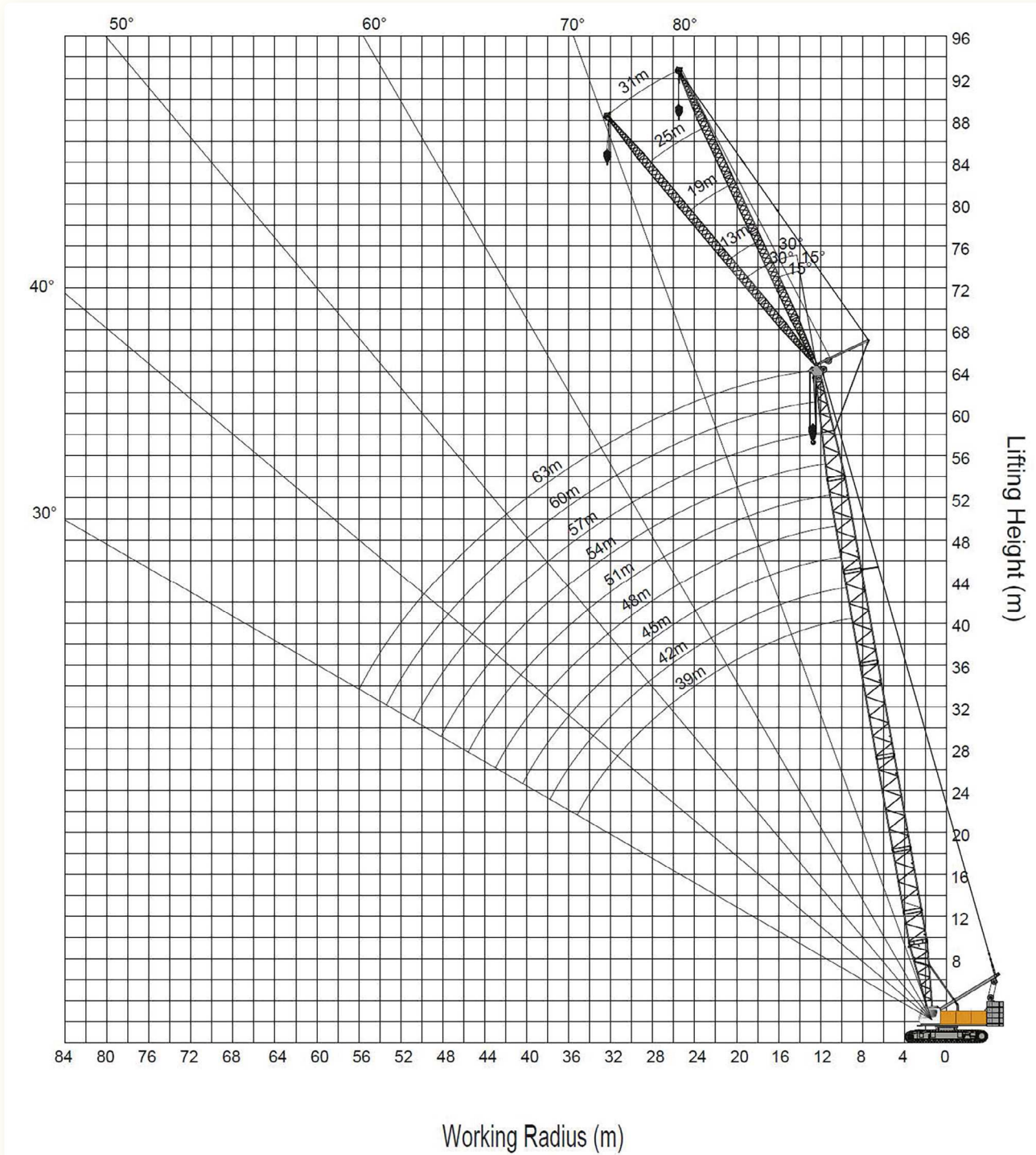
Length(m) Radius(m)	25.0m	28.0m	31.0m	34.0m	37.0m	40.0m	43.0m	46.0m	49.0m	52.0m	55.0m	58.0m	61.0m
6.0m	6.7×9.0												
7.0m	9.0	7.3×9.0	7.9×9.0										
8.0m	9.0	9.0	9.0	8.4×9.0	8.9×9.0								
9.0m	9.0	9.0	9.0	9.0	9.0	9.7×9.0	9.9×9.0						
10.0m	9.0	9.0	9.0	9.0	9.0	9.0	9.0	10.4×9.0	11.0×9.0	11.7×9.0			
12.0m	9.0	9.0	9.0	9.0	9.0	9.0	9.0	9.0	9.0	9.0	12.2×9.0	12.7×9.0	13.0×9.0
14.0m	9.0	9.0	9.0	9.0	9.0	9.0	9.0	9.0	9.0	9.0	9.0	9.0	9.0
16.0m	9.0	9.0	9.0	9.0	9.0	9.0	9.0	9.0	9.0	9.0	9.0	9.0	9.0
18.0m	9.0	9.0	9.0	9.0	9.0	9.0	9.0	9.0	9.0	9.0	9.0	9.0	9.0
20.0m	9.0	9.0	9.0	9.0	9.0	9.0	9.0	9.0	9.0	9.0	9.0	9.0	9.0
22.0m	9.0	9.0	9.0	9.0	9.0	9.0	9.0	9.0	9.0	9.0	9.0	9.0	9.0
24.0m	9.0	9.0	9.0	9.0	9.0	9.0	9.0	9.0	9.0	9.0	9.0	9.0	9.0
26.0m	24.6×9.0	9.0	9.0	9.0	9.0	9.0	9.0	25.8×9.0	25.6×9.0	25.3×9.0	25.1×9.0	25.1×9.0	24.8×9.0
28.0m		27.2×8.7	26.8×9.0	26.7×9.0	26.3×9.0	26.2×9.0	8.0	7.9	7.7	7.6	7.5	7.5	7.4
30.0m			29.8×7.7	7.6	7.3	7.2	7.2	7.0	6.9	6.8	6.6	6.6	6.5
32.0m				6.7	6.6	6.5	6.4	6.3	6.2	6.1	5.9	5.9	5.8
34.0m				32.4×6.6	6.0	5.9	5.8	5.7	5.5	5.5	5.3	5.3	5.2
36.0m					35.0×5.7	5.4	5.3	5.2	5.0	4.9	4.7	4.7	4.6
38.0m						37.6×5.0	4.8	4.7	4.5	4.4	4.2	4.2	4.1
40.0m							4.3	4.2	4.1	4.0	3.8	3.8	3.6
42.0m							40.2×4.2	3.8	3.7	3.6	3.4	3.3	3.2
44.0m								42.8×3.7	3.4	3.2	3.0	2.9	2.8
46.0m									45.6×3.2	2.9	2.6	2.5	2.4
48.0m										2.4	2.3	2.2	2.1
50.0m											2.0	1.9	1.8
52.0m											50.6×1.8	1.6	1.5

\* Preliminary lifting table, may deviate after calculations / adjustments





# WORKING RADIUS | FIXED JIB



# LOAD CHART | FIXED JIB



39m - 63m



360°

15° 30°  
13m - 31m

54t

Main boom length	39.0m								42.0m							
Fly jib length	13.0m		19.0m		25.0m		31.0m		13.0m		19.0m		25.0m		31.0m	
Fly jib angle	15°	30°	15°	30°	15°	30°	15°	30°	15°	30°	15°	30°	15°	30°	15°	30°
14.0m	14.6								14.4							
16.0m	14.3															
18.0m	14.1	11.5	9.0						14.2	11.6	9.1					
20.0m	13.9	10.9	8.9		5.5				14.0	11.1	8.9		5.6			
22.0m	13.7	10.5	8.7	7.5	5.4		3.2		13.8	10.6	8.8	7.6	5.5		3.2	
24.0m	13.6	10.0	8.6	7.2	5.4		3.1		13.7	10.2	8.7	7.3	5.4		3.2	
26.0m	13.4	9.7	8.5	6.9	5.3	5.0	3.1		13.5	9.8	8.6	7.0	5.3	5.0	3.1	
28.0m	13.3	9.3	8.4	6.6	5.2	4.9	3.0		13.4	9.5	8.5	6.7	5.2	4.9	3.0	
30.0m	12.9	9.0	8.3	6.4	5.1	4.9	3.0	2.7	13.2	9.2	8.4	6.5	5.2	4.9	3.0	2.7
32.0m	12.3	8.7	8.2	6.2	5.1	4.8	2.9	2.6	12.3	8.9	8.3	6.3	5.1	4.8	3.0	2.6
34.0m	11.4	8.5	8.1	5.9	5.0	4.6	2.9	2.5	11.3	8.7	8.2	6.1	5.0	4.7	2.9	2.5
36.0m	10.5	8.2	8.0	5.8	5.0	4.4	2.8	2.4	10.4	8.4	8.1	5.9	5.0	4.5	2.9	2.4
38.0m	9.7	8.0	7.8	5.6	4.9	4.3	2.8	2.3	9.6	8.2	8.0	5.7	4.9	4.4	2.8	2.3
40.0m	9.0	7.9	7.5	5.4	4.8	4.1	2.7	2.2	8.8	8.0	7.8	5.5	4.9	4.2	2.8	2.2
42.0m	8.3	7.7	7.2	5.3	4.8	4.0	2.6	2.1	8.2	7.9	7.5	5.4	4.8	4.1	2.7	2.2
44.0m	7.7	7.6	7.0	5.2	4.7	3.9	2.5	2.0	7.6	7.7	7.2	5.3	4.8	4.0	2.5	2.1
46.0m	7.2	7.3	6.7	5.1	4.5	3.8	2.3	2.0	7.1	7.2	7.0	5.2	4.7	3.9	2.4	2.0
48.0m	6.7	6.7	6.5	5.0	4.4	3.7	2.2	1.9	6.6	6.7	6.7	5.1	4.5	3.8	2.3	1.9
50.0m			6.3	4.9	4.3	3.6	2.2	1.8	6.1	6.2	6.4	5.0	4.4	3.7	2.2	1.9
52.0m			6.1	4.8	4.2	3.5	2.1	1.8			6.0	4.9	4.3	3.6	2.1	1.8
54.0m				4.8	4.1	3.5	2.0	1.7			5.6	4.8	4.2	3.5	2.1	1.8
56.0m					4.0	3.4	1.9	1.7			5.3	4.8	4.1	3.5	2.0	1.7
58.0m					3.9	3.4	1.8	1.6					4.0	3.4	1.9	1.7
60.0m						3.3	1.8	1.6					4.0	3.4	1.8	1.6
62.0m							1.7	1.6					3.9	3.3	1.8	1.6
64.0m							1.7	1.6							1.7	1.6
66.0m								1.6							1.7	1.6
70.0m																

\* Preliminary lifting table, may deviate after calculations / adjustments



# LOAD CHART | FIXED JIB



39m - 63m



360°

15° 30°  
13m - 31m

54t

Main boom length	45.0m								48.0m							
Fly jib length	13.0m		19.0m		25.0m		31.0m		13.0m		19.0m		25.0m		31.0m	
Fly jib angle	15°	30°	15°	30°	15°	30°	15°	30°	15°	30°	15°	30°	15°	30°	15°	30°
14.0m																
16.0m	14.5								14.5							
18.0m	14.3	11.8	9.1						14.3		9.1					
20.0m	14.1	11.3	9.0		5.6				14.2	11.4	9.0					
22.0m	13.9	10.8	8.8	7.7	5.5				14.0	11.0	8.9		5.5			
24.0m	13.7	10.4	8.7	7.4	5.4		3.2		13.8	10.6	8.8	7.5	5.4		3.2	
26.0m	13.6	10.0	8.6	7.1	5.3	5.0	3.1		13.7	10.2	8.7	7.2	5.4	5.0	3.1	
28.0m	13.5	9.7	8.5	6.9	5.3	4.9	3.1		13.5	9.9	8.6	7.0	5.3	5.0	3.1	
30.0m	13.2	9.4	8.4	6.6	5.2	4.9	3.0	2.8	12.9	9.5	8.5	6.7	5.2	4.9	3.0	2.8
32.0m	12.1	9.1	8.3	6.4	5.1	4.9	3.0	2.7	11.9	9.3	8.4	6.5	5.2	4.9	3.0	2.7
34.0m	11.1	8.8	8.2	6.2	5.1	4.8	2.9	2.6	10.9	9.0	8.3	6.3	5.1	4.8	3.0	2.6
36.0m	10.2	8.6	8.2	6.0	5.0	4.6	2.9	2.5	10.0	8.8	8.2	6.1	5.1	4.7	2.9	2.5
38.0m	9.3	8.4	8.1	5.8	5.0	4.4	2.9	2.4	9.1	8.5	8.1	5.9	5.0	4.5	2.9	2.4
40.0m	8.6	8.2	8.0	5.7	4.9	4.3	2.8	2.3	8.4	8.3	8.1	5.8	5.0	4.4	2.8	2.3
42.0m	8.0	8.0	7.7	5.5	4.9	4.2	2.7	2.2	7.8	8.0	8.0	5.6	4.9	4.3	2.8	2.2
44.0m	7.4	7.6	7.4	5.4	4.8	4.1	2.6	2.1	7.2	7.4	7.5	5.5	4.9	4.1	2.7	2.2
46.0m	6.8	7.0	7.2	5.3	4.8	4.0	2.5	2.1	6.6	6.9	7.0	5.4	4.8	4.0	2.6	2.1
48.0m	6.3	6.5	6.7	5.2	4.6	3.9	2.4	2.0	6.1	6.3	6.5	5.3	4.8	3.9	2.5	2.0
50.0m	5.9	6.0	6.2	5.1	4.5	3.8	2.3	1.9	5.7	5.8	6.0	5.1	4.6	3.8	2.4	2.0
52.0m	5.5	5.6	5.8	5.0	4.4	3.7	2.2	1.9	5.3	5.4	5.6	5.1	4.5	3.7	2.3	1.9
54.0m			5.4	4.9	4.3	3.6	2.1	1.8	4.9	5.0	5.2	5.0	4.4	3.7	2.2	1.9
56.0m			5.0	4.8	4.2	3.5	2.1	1.8		4.6	4.8	4.9	4.3	3.6	2.1	1.8
58.0m			4.7	4.8	4.1	3.5	2.0	1.7			4.5	4.7	4.2	3.5	2.1	1.8
60.0m					4.0	3.4	1.9	1.7			4.2	4.3	4.1	3.5	2.0	1.7
62.0m					4.0	3.4	1.8	1.6			4.0		4.1	3.4	1.9	1.7
64.0m					3.9	3.3	1.8	1.6					3.9	3.4	1.8	1.6
66.0m							1.7	1.6					3.6	3.3	1.8	1.6
70.0m							1.6	1.6							1.7	1.6
74.0m																1.6
78.0m																

\* Preliminary lifting table, may deviate after calculations / adjustments



# LOAD CHART | FIXED JIB



39m - 63m



360°



15° 30°

13m - 31m



54t

Main boom length	51.0m								54.0m							
Fly jib length	13.0m		19.0m		25.0m		31.0m		13.0m		19.0m		25.0m		31.0m	
Fly jib angle	15°	30°	15°	30°	15°	30°	15°	30°	15°	30°	15°	30°	15°	30°	15°	30°
14.0m																
16.0m	14.6															
18.0m	14.4								14.5							
20.0m	14.2	11.6	9.0						14.3	11.7	9.1					
22.0m	14.1	11.1	8.9		5.5				14.1	11.3	9.0		5.6			
24.0m	13.9	10.7	8.8	7.6	5.5		3.2		14.0	10.9	8.9	7.7	5.5		3.2	
26.0m	13.8	10.4	8.7	7.3	5.4		3.1		13.8	10.5	8.8	7.4	5.4		3.2	
28.0m	13.6	10.0	8.6	7.1	5.3	5.0	3.1		13.7	10.2	8.7	7.1	5.4	5.0	3.1	
30.0m	12.8	9.7	8.5	6.8	5.3	4.9	3.1		12.6	9.9	8.6	6.9	5.3	4.9	3.1	
32.0m	11.7	9.4	8.4	6.6	5.2	4.9	3.0	2.7	11.5	9.6	8.5	6.7	5.2	4.9	3.0	2.8
34.0m	10.7	9.2	8.3	6.4	5.1	4.8	3.0	2.6	10.5	9.3	8.4	6.5	5.2	4.9	3.0	2.7
36.0m	9.8	8.9	8.3	6.2	5.1	4.7	2.9	2.5	9.6	9.1	8.3	6.3	5.1	4.8	2.9	2.6
38.0m	9.0	8.7	8.2	6.0	5.0	4.6	2.9	2.4	8.8	8.9	8.2	6.1	5.1	4.7	2.9	2.5
40.0m	8.3	8.5	8.1	5.9	5.0	4.5	2.9	2.4	8.1	8.3	8.2	6.0	5.0	4.5	2.9	2.4
42.0m	7.6	7.9	7.9	5.7	4.9	4.3	2.8	2.3	7.4	7.7	7.7	5.8	5.0	4.4	2.8	2.3
44.0m	7.0	7.3	7.4	5.6	4.9	4.2	2.8	2.2	6.8	7.2	7.2	5.7	4.9	4.3	2.8	2.2
46.0m	6.5	6.8	6.8	5.5	4.9	4.1	2.7	2.1	6.3	6.6	6.6	5.6	4.9	4.2	2.7	2.2
48.0m	6.0	6.2	6.3	5.3	4.8	4.0	2.6	2.1	5.8	6.1	6.1	5.4	4.8	4.1	2.6	2.1
50.0m	5.6	5.8	5.9	5.2	4.7	3.9	2.5	2.0	5.4	5.6	5.7	5.3	4.8	4.0	2.5	2.0
52.0m	5.1	5.3	5.5	5.1	4.6	3.8	2.4	2.0	4.9	5.1	5.3	5.2	4.7	3.9	2.4	2.0
54.0m	4.8	4.9	5.1	5.1	4.5	3.7	2.3	1.9	4.6	4.7	4.9	5.1	4.6	3.8	2.4	1.9
56.0m	4.4	4.5	4.7	5.0	4.4	3.7	2.2	1.8	4.2	4.3	4.5	4.8	4.5	3.7	2.3	1.9
58.0m	4.1	4.1	4.4	4.6	4.3	3.6	2.1	1.8	3.9	4.0	4.2	4.4	4.4	3.7	2.2	1.8
60.0m			4.1	4.2	4.2	3.5	2.1	1.8	3.5	3.6	3.9	4.1	4.1	3.6	2.1	1.8
62.0m			3.8	3.9	4.0	3.5	2.0	1.7			3.6	3.7	3.8	3.5	2.0	1.7
64.0m			3.5	3.6	3.8	3.4	1.9	1.7			3.3	3.4	3.6	3.5	2.0	1.7
66.0m					3.5	3.4	1.9	1.6			3.0	3.1	3.3	3.4	1.9	1.7
70.0m					3.0	3.1	1.7	1.6					2.8	3.0	1.8	1.6
74.0m							1.7	1.6							1.7	1.6
78.0m															1.6	1.6

\* Preliminary lifting table, may deviate after calculations / adjustments





# LOAD CHART | FIXED JIB



39m - 63m



360°



13m - 31m



54t

Main boom length	57.0m								60.0m							
Fly jib length	13.0m		19.0m		25.0m		31.0m		13.0m		19.0m		25.0m		31.0m	
Fly jib angle	15°	30°	15°	30°	15°	30°	15°	30°	15°	30°	15°	30°	15°	30°	15°	30°
14.0m																
16.0m																
18.0m	14.5								14.6							
20.0m	14.3	11.8	9.1						14.4	9.1						
22.0m	14.2	11.4	9.0		5.6				14.2	11.5	9.0					
24.0m	14.0	11.0	8.9	7.8	5.5				14.1	11.1	8.9		5.5			
26.0m	13.9	10.6	8.8	7.5	5.4		3.2		13.9	10.8	8.8	7.6	5.5		3.2	
28.0m	13.6	10.3	8.7	7.2	5.4	5.0	3.1		13.4	10.5	8.7	7.3	5.4	5.0	3.1	
30.0m	12.4	10.0	8.6	7.0	5.3	5.0	3.1		12.2	10.2	8.6	7.1	5.3	5.0	3.1	
32.0m	11.3	9.7	8.5	6.8	5.3	4.9	3.0	2.8	11.1	9.9	8.6	6.9	5.3	4.9	3.1	2.8
34.0m	10.3	9.5	8.4	6.6	5.2	4.9	3.0	2.7	10.2	9.6	8.5	6.7	5.2	4.9	3.0	2.7
36.0m	9.4	9.2	8.4	6.4	5.1	4.8	3.0	2.6	9.3	9.4	8.4	6.5	5.2	4.9	3.0	2.6
38.0m	8.6	8.8	8.3	6.2	5.1	4.7	2.9	2.5	8.5	8.7	8.3	6.3	5.1	4.8	2.9	2.5
40.0m	7.9	8.1	8.2	6.1	5.0	4.6	2.9	2.4	7.7	8.0	8.1	6.2	5.1	4.7	2.9	2.5
42.0m	7.2	7.5	7.5	5.9	5.0	4.5	2.9	2.4	7.1	7.4	7.4	6.0	5.0	4.5	2.9	2.4
44.0m	6.6	7.0	7.0	5.8	5.0	4.4	2.8	2.3	6.5	6.9	6.8	5.9	5.0	4.4	2.8	2.3
46.0m	6.1	6.4	6.4	5.7	4.9	4.2	2.8	2.2	6.0	6.3	6.3	5.7	4.9	4.3	2.8	2.3
48.0m	5.6	5.9	5.9	5.5	4.9	4.1	2.7	2.1	5.5	5.8	5.8	5.6	4.9	4.2	2.8	2.2
50.0m	5.1	5.4	5.5	5.4	4.8	4.0	2.6	2.1	5.0	5.3	5.3	5.5	4.9	4.1	2.7	2.1
52.0m	4.7	4.9	5.0	5.3	4.8	4.0	2.5	2.0	4.6	4.8	4.9	5.3	4.8	4.0	2.6	2.1
54.0m	4.3	4.5	4.7	5.0	4.7	3.9	2.4	2.0	4.2	4.4	4.5	4.9	4.8	3.9	2.5	2.0
56.0m	4.0	4.1	4.3	4.6	4.6	3.8	2.3	1.9	3.9	4.0	4.2	4.5	4.4	3.9	2.4	2.0
58.0m	3.7	3.8	4.0	4.3	4.2	3.7	2.3	1.9	3.5	3.7	3.8	4.2	4.1	3.8	2.3	1.9
60.0m	3.3	3.4	3.7	3.9	3.9	3.6	2.2	1.8	3.2	3.3	3.5	3.8	3.8	3.7	2.2	1.9
62.0m	3.0	3.1	3.4	3.6	3.6	3.6	2.1	1.8	2.9	3.0	3.2	3.5	3.5	3.6	2.2	1.8
64.0m		2.8	3.1	3.3	3.3	3.5	2.0	1.7	2.6	2.7	2.9	3.2	3.2	3.6	2.1	1.8
66.0m			2.8	3.0	3.1	3.4	2.0	1.7	2.4	2.4	2.7	2.9	3.0	3.3	2.0	1.7
70.0m				2.4	2.6	2.8	1.9	1.6			2.2	2.3	2.5	2.7	1.9	1.7
74.0m					2.2	2.3	1.8	1.6					2.1	2.2	1.8	1.6
78.0m							1.7	1.6						1.8	1.7	1.6
82.0m								1.6							1.6	1.6
86.0m																

\* Preliminary lifting table, may deviate after calculations / adjustments

# LOAD CHART | FIXED JIB



39m - 63m



360°



15° 30°  
13m - 31m

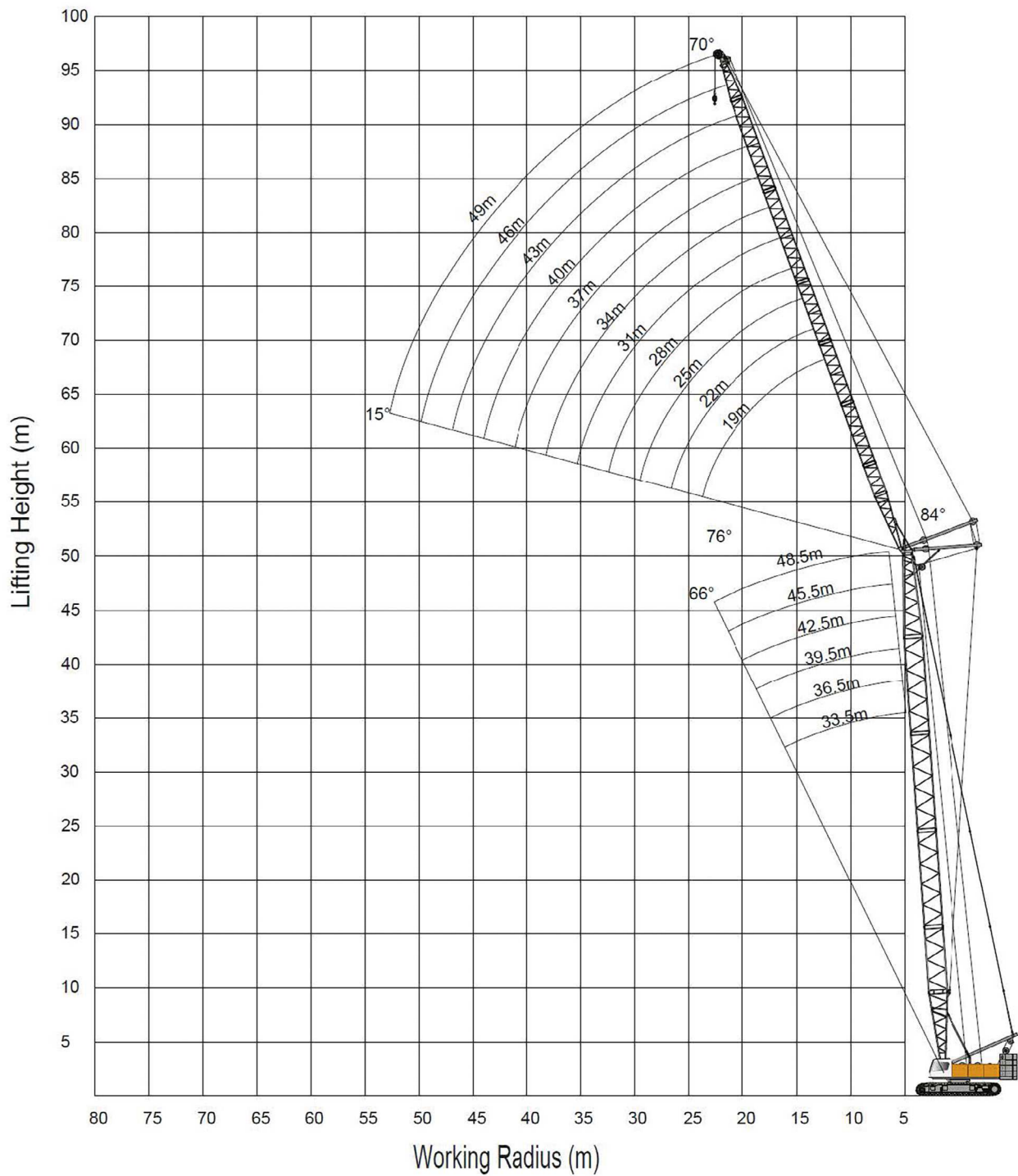


54t

Main boom length	63.0m											
Fly jib length	13.0m		19.0m		25.0m		31.0m					
Fly jib angle	15°	30°	15°	30°	15°	30°	15°	30°				
14.0m												
16.0m												
18.0m	14.6											
20.0m	14.4											
22.0m	14.3	11.6	9.1									
24.0m	14.1	11.2	9.0		5.5							
26.0m	14.0	10.9	8.9	7.6	5.5		3.2					
28.0m	13.2	10.6	8.8	7.4	5.4		3.2					
30.0m	12.0	10.3	8.7	7.2	5.4	5.0	3.1					
32.0m	10.9	10.0	8.6	7.0	5.3	4.9	3.1					
34.0m	10.0	9.8	8.5	6.8	5.3	4.9	3.0	2.7				
36.0m	9.1	9.3	8.4	6.6	5.2	4.9	3.0	2.7				
38.0m	8.3	8.5	8.4	6.4	5.2	4.8	3.0	2.6				
40.0m	7.5	7.8	7.9	6.3	5.1	4.7	2.9	2.5				
42.0m	6.9	7.2	7.2	6.1	5.1	4.6	2.9	2.4				
44.0m	6.3	6.7	6.6	6.0	5.0	4.5	2.9	2.4				
46.0m	5.7	6.1	6.1	5.8	5.0	4.4	2.8	2.3				
48.0m	5.3	5.6	5.6	5.7	4.9	4.3	2.8	2.2				
50.0m	4.8	5.1	5.1	5.6	4.9	4.2	2.7	2.2				
52.0m	4.4	4.7	4.7	5.2	4.9	4.1	2.6	2.1				
54.0m	4.0	4.2	4.3	4.7	4.6	4.0	2.6	2.0				
56.0m	3.6	3.9	4.0	4.4	4.2	3.9	2.5	2.0				
58.0m	3.3	3.5	3.6	4.0	3.9	3.8	2.4	1.9				
60.0m	3.0	3.2	3.3	3.6	3.6	3.8	2.3	1.9				
62.0m	2.7	2.8	3.0	3.3	3.3	3.7	2.2	1.9				
64.0m	2.4	2.5	2.7	3.0	3.0	3.4	2.2	1.8				
66.0m	2.2	2.3	2.5	2.7	2.8	3.1	2.1	1.8				
70.0m			2.0	2.2	2.3	2.6	2.0	1.7				
74.0m			1.6	1.7	1.9	2.1	1.9	1.6				
78.0m					1.5	1.6	1.7	1.6				
82.0m							1.4	1.6				
86.0m							1.0	1.2				

\* Preliminary lifting table, may deviate after calculations / adjustments

# WORKING RADIUS | LUFFING JIB



# LOAD CHART | LUFFING JIB



33,5m - 48,5m



360°



19m - 49m



54t

Mainboom Lenght	33,5m																	
Luffing JIB lenght	19,0m			22,0m			25,0m			28,0m			31,0m			34,0m		
Luffing JIB angle	84.0	76.0	66.0	84.0	76.0	66.0	84.0	76.0	66.0	84.0	76.0	66.0	84.0	76.0	66.0	84.0	76.0	66.0
10.0m																		
12.0m																		
14.0m	30,6			30,6														
16.0m	27,4			27,0			26,6											
18.0m	24,0			23,7			23,4			20,7			20,7					
20.0m	21,4	19,9		21,2			28,9			20,5			20,3			20,0		
22.0m	19,3	17,9		19,0	17,6		18,8			18,5			18,3			18,0		
24.0m		16,3		17,3	16,1		17,0	15,8		16,8			16,6			16,3		
26.0m		14,9		15,8	14,7		15,6	14,5		15,4	14,2		15,1	14,0		14,9		
28.0m		13,7	12,4		13,5		14,4	13,3		14,1	13,1		14,0	12,9		13,8	12,7	
30.0m			11,4		12,4	11,3		12,2		13,1	12,1		12,9	11,9		12,7	11,7	
32.0m			10,5			10,4		11,3	10,2	12,1	12,1		12,0	11,0		11,8	10,8	
34.0m						9,6		10,5	9,5		11,2		11,1	10,2		10,9	10,0	
36.0m						9,0			8,8		10,4	9,2		9,5	8,4	10,2	9,3	
38.0m								8,2			8,6			8,8	7,8	9,4	8,6	7,7
40.0m											8,0			8,3	7,3		8,1	7,1
42.0m											7,5				6,8		7,6	6,7
44.0m											7,0				6,5		0,0	6,3
46.0m																		5,9
48.0m																		5,6

\* Preliminary lifting table, may deviate after calculations / adjustments



# LOAD CHART | LUFFING JIB



33,5m - 48,5m



360°



19m - 49m



54t

Mainboom Lenght	33,5m														
Luffing JIB lenght	37.0m			40.0m			43.0m			46.0m			49.0m		
Luffing JIB angle	84.0	76.0	66.0	84.0	76.0	66.0	84.0	76.0	66.0	84.0	76.0	66.0	84.0	76.0	66.0
10.0m															
12.0m															
14.0m															
16.0m															
18.0m															
20.0m	18,2														
22.0m	17,7			15,4			12,7								
24.0m	16,1			15,4			12,9			10,7					
26.0m	14,7			14,5			12,9			10,8			8,9		
28.0m	13,5			13,3			12,7			10,8			9,0		
30.0m	12,5	11,4		12,3			12,1			10,6			8,9		
32.0m	11,6	10,6		11,2	10,4		11,2	10,2		10,1			8,7		
34.0m	10,7	9,8		9,3	9,6		9,1	9,5		9,2	9,3		8,3		
36.0m	10,0	9,1		9,1	8,9		7,4	8,7		7,3	8,6		7,5	8,4	
38.0m	9,3	8,5		8,6	8,3		7,1	8,1		5,8	7,9		5,9	7,7	
40.0m	8,6	7,9	6,9	8,1	7,7		6,7	7,6		5,5	7,4		4,4	7,2	
42.0m		7,4	6,5	7,7	7,2	6,3	6,2	7,0		5,1	6,8		4,1	6,7	
44.0m		6,9	6,0	7,2	6,8	5,9	5,9	6,6	5,7	4,8	6,5		3,8	6,2	
46.0m			5,7		6,4	5,5	5,5	6,2	5,3	4,4	5,2	5,1	3,5	5,9	
48.0m			5,3		6,0	5,2		5,8	5,0	4,1	4,9	4,8	3,2	4,5	4,6
50.0m			5,0			4,9		5,5	4,7		4,5	4,5	3,0	3,6	4,3
52.0m						4,6			4,4		4,2	4,2	2,7	3,2	4,1
54.0m						4,3			4,1		4,0	4,0		3,1	3,8
56.0m									3,9			3,7		2,8	3,5
58.0m												3,5			3,3
60.0m												3,2			3,0
62.0m															2,8
64.0m															

\* Preliminary lifting table, may deviate after calculations / adjustments



# LOAD CHART | LUFFING JIB



33,5m - 48,5m



360°



19m - 49m



54t

Mainboom Length	36,5m																	
Luffing JIB length	19,0m			22,0m			25,0m			28,0m			31,0m			34,0m		
Luffing JIB angle	84.0	76.0	66.0	84.0	76.0	66.0	84.0	76.0	66.0	84.0	76.0	66.0	84.0	76.0	66.0	84.0	76.0	66.0
10.0m																		
12.0m																		
14.0m	31,2																	
16.0m	27,0			26,6			20,7											
18.0m	23,8			23,5			20,7			20,7			20,7					
20.0m	21,2			20,9			20,6			20,3			20,0			19,8		
22.0m	19,1	17,6		20,7			20,3			20,1			18,0			17,8		
24.0m	17,5	16,0		17,2	15,8		16,8	15,5		16,7			16,4			16,1		
26.0m		14,7		15,7	14,7		15,5	14,2		15,2	14,0		15,0			14,9		
28.0m		13,5			13,3		14,2	13,1		14,0	12,8		13,8	12,6		13,7		
30.0m			11,1		12,2		13,1	12,1		13,0	11,9		12,8	11,6		12,6	11,4	
32.0m			10,3		11,3	10,1		11,2		12,0	11,0		11,9	10,8		11,7	10,6	
34.0m			10,4			10,3		10,4	10,1		10,2		11,0	10,7		11,3	10,7	
36.0m						8,7			8,6		10,4	8,4		10,2		10,1	10,0	
38.0m						8,5			7,9			7,7		8,6	7,6	10,4	8,5	
40.0m									7,5			7,6		8,1	7,0		7,9	6,8
42.0m												6,8			6,7		7,5	6,5
44.0m															6,3			6,0
46.0m															5,9			5,7
48.0m																		5,3

\* Preliminary lifting table, may deviate after calculations / adjustments

# LOAD CHART | LUFFING JIB



33,5m - 48,5m



360°



19m - 49m



54t

Mainboom Lenght	36,5m														
Luffing JIB lenght	37.0m			40.0m			43.0m			46.0m			49.0m		
Luffing JIB angle	84.0	76.0	66.0	84.0	76.0	66.0	84.0	76.0	66.0	84.0	76.0	66.0	84.0	76.0	66.0
10.0m															
12.0m															
14.0m															
16.0m															
18.0m															
20.0m	20,0														
22.0m	17,6			15,6											
24.0m	15,9			16,2			12,9			10,7					
26.0m	14,5			14,4			12,9			11,7			8,9		
28.0m	13,3			13,1			12,8			11,0			9,0		
30.0m	12,3	11,3		12,2			12,0			10,6			8,9		
32.0m	11,4	10,4		11,3	10,2		11,1			10,2			8,8		
34.0m	10,6	9,6		10,3	9,5		9,5	9,2		9,4			8,4		
36.0m	10,4	9,0		10,1	8,7		7,4	8,6		7,7	8,4		7,7	8,8	
38.0m	10,2	8,3		8,7	8,4		7,2	8,0		5,8	7,7		6,1	7,6	
40.0m	8,6	7,7		8,5	7,6		6,8	7,5		5,6	7,4		4,4	7,0	
42.0m		7,7	6,2	7,7	7,1		6,4	6,9		5,1	6,8		4,1	6,6	
44.0m		6,8	5,9	8,1	6,7	5,7	5,9	6,5		4,8	6,3		3,8	6,1	
46.0m		7,2	6,0		6,2	5,3	5,6	6,0	5,0	4,5	5,9		3,6	5,7	
48.0m			5,2		5,9	5,0		5,8	4,8	4,1	5,0	5,3	3,2	5,3	
50.0m			4,9			4,7		5,3	4,5	3,9	4,7	4,3	3,1	4,3	4,1
52.0m			5,0			4,4		5,0	4,1		4,3	4,1	3,2	3,4	3,8
54.0m						4,1			4,0		4,1	3,8		3,2	3,6
56.0m									3,7			3,5		2,9	3,3
58.0m									3,5			3,3		2,7	3,2
60.0m												3,2			2,9
62.0m															3,0
64.0m															

\* Preliminary lifting table, may deviate after calculations / adjustments



# LOAD CHART | LUFFING JIB



33,5m - 48,5m



360°



19m - 49m



54t

Mainboom Length	39,5m																	
Luffing JIB length	19,0m			22,0m			25,0m			28,0m			31,0m			34,0m		
Luffing JIB angle	84.0	76.0	66.0	84.0	76.0	66.0	84.0	76.0	66.0	84.0	76.0	66.0	84.0	76.0	66.0	84.0	76.0	66.0
10.0m																		
12.0m																		
14.0m	30,8																	
16.0m	26,6			20,7														
18.0m	23,7			20,7			20,7			20,1			20,7					
20.0m	20,9			20,6			20,3			20,1			19,8			19,5		
22.0m	18,8			20,4			18,4			18,5			17,8			17,6		
24.0m	17,8	17,2		16,9	15,4		16,7			16,4			16,2			15,9		
26.0m		15,7		15,5	14,1		15,3	13,9		15,0	13,6		14,9			14,6		
28.0m		14,3			13,1		14,0	12,9		13,9	12,5		13,7	12,3		13,4		
30.0m		13,2			12,1		13,1	11,9		12,8	11,6		12,8	11,4		12,5	11,2	
32.0m					11,1			11,0		11,9	10,7		12,1	10,5		11,5	10,4	
34.0m			10,8			10,8		10,2			10,4		10,9	9,8		10,8	9,6	
36.0m			9,2			8,4					9,3		10,2	9,2		10,0	8,9	
38.0m			8,6			7,8		8,2		8,6	7,5			8,5	0,0	9,4	8,3	
40.0m								7,7			6,9			7,9	6,8		7,7	
42.0m								7,2			6,5				6,8		8,0	6,2
44.0m								6,8			6,2				5,9		6,8	5,8
46.0m															5,6			5,7
48.0m															5,3			5,1
50.0m																		5,3
52.0m																		

\* Preliminary lifting table, may deviate after calculations / adjustments

# LOAD CHART | LUFFING JIB



33,5m - 48,5m



360°



19m - 49m



54t

Mainboom Lenght	39,5m														
Luffing JIB lenght	37.0m			40.0m			43.0m			46.0m			49.0m		
Luffing JIB angle	84.0	76.0	66.0	84.0	76.0	66.0	84.0	76.0	66.0	84.0	76.0	66.0	84.0	76.0	66.0
10.0m															
12.0m															
14.0m															
16.0m															
18.0m															
20.0m															
22.0m	17,3			15,3											
24.0m	15,7			16,0			10,4			10,4					
26.0m	14,3			14,1			10,4			10,4			8,9		
28.0m	13,2			13,0			10,4			10,4			8,9		
30.0m	12,2			12,0			10,4			10,4			9,0		
32.0m	11,3	10,2		11,2	10,4		10,4			10,3			8,8		
34.0m	10,5	9,4		9,4	9,2		10,8	9,1		9,5			8,6		
36.0m	9,8	8,7		9,2	8,6		7,4	8,4		8,0	8,7		7,7		
38.0m	9,2	8,3		8,7	7,9		7,9	7,7		5,9	7,6		6,5	7,4	
40.0m	8,6	7,6		8,2	7,4		6,8	8,0		5,7	7,0		4,4	6,8	
42.0m		7,1	5,9	7,7	6,9		6,9	6,8		5,3	6,6		4,2	6,9	
44.0m		6,7	5,6	7,4	6,6	5,4	5,9	6,3		4,9	6,1		3,9	5,9	
46.0m		6,2	5,2		6,1	5,0	5,6	5,9	4,9	4,8	5,8		3,6	5,6	
48.0m			4,9		5,8	4,7		5,5	5,0	4,2	5,1	4,3	3,2	5,2	
50.0m			4,6		5,4	4,4		5,2	4,2	4,0	4,8	4,1	3,1	3,8	3,9
52.0m			4,3			4,1		4,9	4,0		4,4	3,8	3,5	3,5	3,6
54.0m						4,0			3,7		4,1	3,5		3,2	3,3
56.0m						4,4			3,5		3,9	3,3		3,0	3,2
58.0m									3,2			3,2		3,0	2,9
60.0m												2,9			2,8
62.0m												3,0			2,5
64.0m															

\* Preliminary lifting table, may deviate after calculations / adjustments



# LOAD CHART | LUFFING JIB



33,5m - 48,5m



360°



19m - 49m



54t

Mainboom Length	42,5m																	
Luffing JIB length	19,0m			22,0m			25,0m			28,0m			31,0m			34,0m		
Luffing JIB angle	84.0	76.0	66.0	84.0	76.0	66.0	84.0	76.0	66.0	84.0	76.0	66.0	84.0	76.0	66.0	84.0	76.0	66.0
10.0m																		
12.0m																		
14.0m	20,7																	
16.0m	20,7			20,7														
18.0m	20,7			20,7			20,7			20,7								
20.0m	20,3			20,3			20,1			19,8			19,5			19,3		
22.0m	18,5	16,8		18,1			18,1			17,8			17,6			17,4		
24.0m	16,9	15,5		16,7	15,0		16,1			16,2			15,9			15,8		
26.0m		14,0		15,5	13,8		14,9	14,1		14,5			14,6			14,8		
28.0m		13,0			12,7		14,0	12,5		13,5	12,2		13,2	12,1		13,2		
30.0m		12,0			12,6		12,9	11,6		12,8	11,3		12,2	11,1		12,0	10,9	
32.0m					11,7			10,7		12,5	10,5		11,5	10,4		11,2	10,1	
34.0m			8,8			8,6		10,4			9,7		11,0	9,5		10,5	9,4	
36.0m			8,3			8,1		9,3	7,8		9,5		10,1	8,9		10,1	8,7	
38.0m						7,6			7,4		8,5	7,1		8,3		9,3	8,4	
40.0m						7,0			6,8			6,7		7,7	6,5		7,6	
42.0m									6,5			6,2		7,8	6,0		7,1	5,9
44.0m												5,9			5,7		6,7	5,5
46.0m												5,5			5,3			5,1
48.0m															5,0			4,9
50.0m																		5,3
52.0m																		5,3

\* Preliminary lifting table, may deviate after calculations / adjustments

# LOAD CHART | LUFFING JIB



33,5m - 48,5m



360°



19m - 49m



54t

Mainboom Lenght	42,5m														
Luffing JIB lenght	37.0m			40.0m			43.0m			46.0m			49.0m		
Luffing JIB angle	84.0	76.0	66.0	84.0	76.0	66.0	84.0	76.0	66.0	84.0	76.0	66.0	84.0	76.0	66.0
10.0m															
12.0m															
14.0m															
16.0m															
18.0m															
20.0m															
22.0m	17,1			10,4											
24.0m	15,5			10,4			10,4			10,4					
26.0m	14,1			10,4			10,4			10,4			8,8		
28.0m	13,1			10,4			10,4			10,4			8,9		
30.0m	12,1			10,4			10,4			10,4			9,0		
32.0m	11,0	10,8		10,4			10,4			10,4			8,9		
34.0m	10,2	9,2		9,4	9,0		10,1	8,8		9,7			8,6		
36.0m	9,6	8,6		9,2	8,4		7,5	8,4		8,4	7,9		7,9		
38.0m	9,8	7,9		8,7	7,8		7,3	7,6		5,9	7,4		6,8	7,2	
40.0m	8,5	7,4		8,3	7,5		6,8	7,0		5,7	6,8		4,5	6,7	
42.0m	7,9	6,9		7,8	6,8		6,4	6,6		5,3	7,1		4,2	6,2	
44.0m		6,5	5,3	7,3	6,5		6,0	6,1		5,0	5,9		4,0	5,8	
46.0m		6,1	5,0		5,9	4,8	5,7	5,8		5,3	5,6		4,5	5,4	
48.0m		5,8	4,7		5,6	4,5	5,4	5,4	4,2	4,2	5,2		3,3	5,0	
50.0m			4,3		5,2	4,1		5,0	4,1	4,0	4,9	3,8	3,1	4,7	
52.0m			4,1			4,0		4,8	3,7		5,1	3,5	2,8	3,6	3,3
54.0m			3,9			4,5			3,5		4,2	3,3		3,3	3,1
56.0m						3,5			3,2		4,0	3,1		3,1	2,9
58.0m									3,1			2,9		2,8	2,7
60.0m									2,9			3,1			2,5
62.0m												2,5			2,3
64.0m															

\* Preliminary lifting table, may deviate after calculations / adjustments



# LOAD CHART | LUFFING JIB



33,5m - 48,5m



360°



19m - 49m



54t

Mainboom Length	45,5m																	
Luffing JIB length	19,0m			22,0m			25,0m			28,0m			31,0m			34,0m		
Luffing JIB angle	84.0	76.0	66.0	84.0	76.0	66.0	84.0	76.0	66.0	84.0	76.0	66.0	84.0	76.0	66.0	84.0	76.0	66.0
10.0m																		
12.0m																		
14.0m																		
16.0m	20,7			20,7														
18.0m	20,7			20,7			20,7			20,7			19,3			19,0		
20.0m	18,5			20,1			20,0			19,5								
22.0m	16,5			16,0			17,9			17,6			17,4			17,3		
24.0m	15,1	15,0		14,7			14,3			16,0			15,8			15,6		
26.0m		13,8		13,6	13,8		13,3	13,3		12,9			14,9			14,2		
28.0m		12,8		12,8	12,5		12,3	12,2		12,0	12,0		11,6			13,1		
30.0m		12,3			11,6		11,5	11,3		11,2	11,1		10,9	11,7		10,5		
32.0m					10,7			10,5		10,4	10,4		10,1	10,1		9,8	10,6	
34.0m			8,6		10,4			9,8			9,5		9,5	9,4		9,2	9,2	
36.0m			8,0		7,8			9,1			8,9		9,1	8,7		8,7	8,6	
38.0m			7,5		7,3			7,2			8,3			8,6		8,2	8,0	
40.0m					6,8			6,7			7,7	6,4		7,7			7,5	
42.0m								6,3			6,0			7,1	5,9		7,0	
44.0m								5,9			5,7				6,1		6,6	5,3
46.0m											5,3				5,1			5,0
48.0m															4,9			4,7
50.0m															5,0			5,3
52.0m																		5,3

\* Preliminary lifting table, may deviate after calculations / adjustments



# LOAD CHART | LUFFING JIB



33,5m - 48,5m



360°



19m - 49m



54t

Mainboom Length	45,5m														
Luffing JIB length	37.0m			40.0m			43.0m			46.0m			49.0m		
Luffing JIB angle	84.0	76.0	66.0	84.0	76.0	66.0	84.0	76.0	66.0	84.0	76.0	66.0	84.0	76.0	66.0
10.0m															
12.0m															
14.0m															
16.0m															
18.0m															
20.0m															
22.0m	10,4			10,4											
24.0m	10,4			10,4			10,4								
26.0m	10,4			10,4			10,4			10,4			8,8		
28.0m	10,4			10,4			10,4			10,4			8,9		
30.0m	10,4			10,4			10,4			10,4			9,0		
32.0m	9,5	9,6		10,4			10,4			10,4			8,9		
34.0m	8,9	9,1		8,7	8,8		10,1			9,7			8,6		
36.0m	8,4	8,4		8,1	8,8		7,8	7,9		8,6			8,0		
38.0m	7,9	7,7		7,7	7,6		7,3	7,5		6,2	7,4		6,9	7,0	
40.0m	7,5	7,7		7,7	7,1		6,9	6,8		5,8	6,7		4,9	6,5	
42.0m	7,1	6,8		6,8	6,6		6,5	6,4		5,3	6,2		4,3	6,1	
44.0m		6,8		6,6	6,2		6,1	6,0		5,0	5,9		4,0	5,6	
46.0m		5,9	4,8		5,9		5,8	5,6		4,6	5,9		4,1	5,2	
48.0m		5,6	4,4		5,9	4,2	5,6	5,2		4,3	5,1		3,3	4,9	
50.0m			4,1		5,1	4,0		5,0	3,8	4,1	4,9		3,1	5,4	
52.0m			4,0			3,8		4,7	3,5		4,5	3,3	2,9	3,8	
54.0m			4,5			3,6		4,3	3,3		4,2	3,2	2,6	3,4	2,9
56.0m			3,4			3,3			3,1		4,0	2,9		3,2	3,6
58.0m						3,1			2,9			3,0		2,9	2,5
60.0m									2,9			2,5		2,7	2,3
62.0m									2,5			2,3			2,2
64.0m															

\* Preliminary lifting table, may deviate after calculations / adjustments



# LOAD CHART | LUFFING JIB



33,5m - 48,5m



360°



19m - 49m



54t

Mainboom Lenght	48,5m																	
Luffing JIB lenght	19,0m			22,0m			25,0m			28,0m			31,0m			34,0m		
Luffing JIB angle	84.0	76.0	66.0	84.0	76.0	66.0	84.0	76.0	66.0	84.0	76.0	66.0	84.0	76.0	66.0	84.0	76.0	66.0
10.0m																		
12.0m																		
14.0m																		
16.0m	20,7			20,7														
18.0m	20,3			20,7			20,7			20,7								
20.0m	16,0			18,2			18,9			19,0			19,0					
22.0m	14,6			14,3			16,3			16,9			17,1			10,4		
24.0m	13,3	15,0		13,1			12,9			14,7			15,4			10,4		
26.0m		13,4		12,0	13,1		11,7			11,6			13,3			10,4		
28.0m		12,3		11,2	12,2		10,8	11,9		10,5	11,6		10,5			10,4		
30.0m		11,4			11,3		10,1	11,0		9,7	10,8		9,5	10,5		9,6		
32.0m		10,6			10,4			10,3		9,1	10,0		8,8	9,8		8,6	9,6	
34.0m					9,7			9,5		8,6	9,3		8,3	9,1		8,0	8,9	
36.0m			7,6					8,8			8,6		7,8	8,5		7,6	8,3	
38.0m			7,1			6,9			6,7		8,1			7,9		7,1	8,0	
40.0m			6,7			6,5			6,3		7,6	6,0		7,4			7,2	
42.0m						6,0			5,9			5,7		6,9	5,5		6,8	
44.0m									5,5			5,3			5,1		6,3	5,0
46.0m												5,0			4,8		5,9	4,6
48.0m												4,7			4,5			4,3
50.0m															4,2			5,3
52.0m																		5,3
54.0m																		4,0
56.0m																		

\* Preliminary lifting table, may deviate after calculations / adjustments

# LOAD CHART | LUFFING JIB



33,5m - 48,5m



360°



19m - 49m



54t

Mainboom Length	48,5m														
Luffing JIB length	37.0m			40.0m			43.0m			46.0m			49.0m		
Luffing JIB angle	84.0	76.0	66.0	84.0	76.0	66.0	84.0	76.0	66.0	84.0	76.0	66.0	84.0	76.0	66.0
10.0m															
12.0m															
14.0m															
16.0m															
18.0m															
20.0m															
22.0m	10,4														
24.0m	10,4			10,4			10,4								
26.0m	10,4			10,4			10,4			10,4			8,8		
28.0m	10,4			10,4			10,4			10,4			8,9		
30.0m	10,4			10,4			10,4			10,4			9,0		
32.0m	8,7			10,1			10,4			10,4			8,9		
34.0m	7,7	8,7		8,0	8,6		9,2			9,6			8,6		
36.0m	7,2	8,1		7,0	7,9		7,3	7,7		8,4			8,2		
38.0m	6,8	7,6		6,6	7,4		6,3	7,1		6,6	6,9		7,2		
40.0m	6,5	7,0		6,2	6,8		5,9	6,7		5,7	6,5		5,3	6,2	
42.0m	6,1	6,6		5,9	6,4		5,6	6,2		5,3	6,0		4,4	5,9	
44.0m		6,1		5,6	5,9		5,3	5,8		5,0	5,6		4,1	5,4	
46.0m		5,8	4,4		5,6		5,0	5,4		4,7	5,2		3,7	5,0	
48.0m		5,4	4,1		5,2	4,0	4,8	5,0		4,3	4,9		3,4	4,7	
50.0m			3,9		5,0	3,7		4,8	3,4	4,1	4,6		3,2	4,4	
52.0m			3,6		4,7	3,4		4,5	3,2		4,3	3,1	2,9	3,8	
54.0m			3,4			3,2		4,2	3,0		4,1	2,8	2,7	3,5	2,6
56.0m			3,2			3,1			2,8		3,8	2,6		3,2	2,4
58.0m						2,8			2,6		3,6	2,4		3,0	2,3
60.0m						2,6			2,4			2,3		2,8	2,1
62.0m									2,3			2,1			1,9
64.0m															

\* Preliminary lifting table, may deviate after calculations / adjustments



# MAIN BOOM CONFIGURATIONS

Boom length	Boom insert		
	3m	6m	9m
18	-	-	-
21	1	-	-
24	-	1	-
27	1	1	-
30	1	-	1
33	-	1	1
36	1	1	1
39	2	1	1
42	-	1	2
45	1	1	2
48	2	1	2
51	-	1	3
54	1	1	3
57	2	2	3
60	-	1	4
63	1	1	4
66	2	1	4
69	-	1	5
72	1	1	5
75	2	1	5

# FIXED JIB & LUFFING JIB CONFIGURATIONS

## FIXED JIB

Jib Length	Insert		Boom length	Boom & jib angle
	3m	6m		
13	1	-	39-63	15°, 30°
19	1	1	39-63	15°, 30°
25	1	2	39-63	15°, 30°
31	1	3	39-63	15°, 30°

## LUFFING JIB

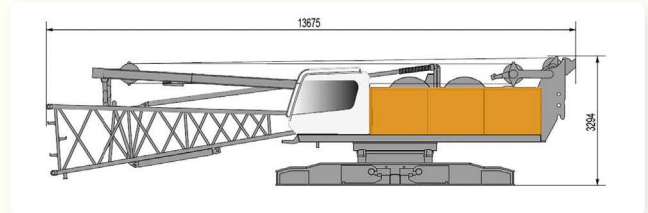
Jib Length	Insert			Boom length	Boom angle
	3m	6m	9m		
19	1	1	-	33,5 ~ 48,5	66° - 84°
22	1	-	1	33,5 ~ 48,5	66° - 84°
25	-	1	1	33,5 ~ 48,5	66° - 84°
28	1	1	1	33,5 ~ 48,5	66° - 84°
31	1	-	2	33,5 ~ 48,5	66° - 84°
34	-	1	2	33,5 ~ 48,5	66° - 84°
37	1	1	2	33,5 ~ 48,5	66° - 84°
40	-	2	2	33,5 ~ 48,5	66° - 84°
43	1	2	2	33,5 ~ 48,5	66° - 84°
46	-	3	2	33,5 ~ 48,5	66° - 84°
49	1	3	2	33,5 ~ 48,5	66° - 84°



# TRANSPORT | DIMENSIONS AND WEIGHTS

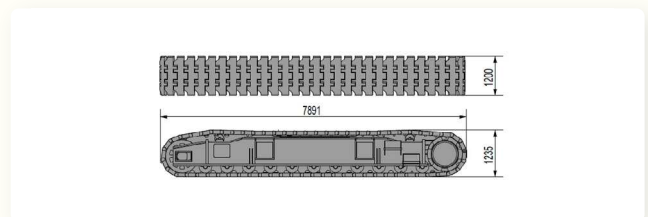
## BASIC MACHINE X1

Length: 13.675m  
Width: 3.294m  
Height: 3.300m  
Weight: 36000 kg



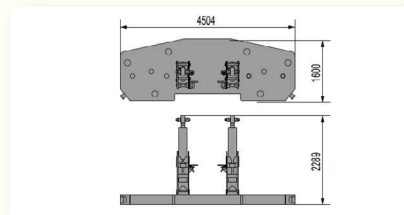
## CRAWLERS X2

Length: 7.891m  
Width: 1.235m  
Height: 1.200m  
Weight: 18500 kg



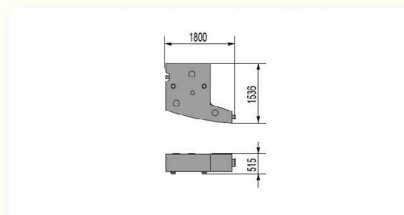
## BASE COUNTERWEIGHT X1

Length: 4.504m  
Width: 2.289m  
Height: 16000m  
Weight: 7000 kg



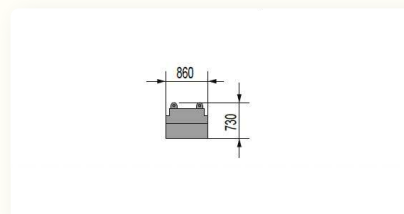
## COUNTERWEIGHT A X8

Length: 1.844m  
Width: 1.616m  
Height: 0.565m  
Weight: 5470 kg



## COUNTERWEIGHT B X1

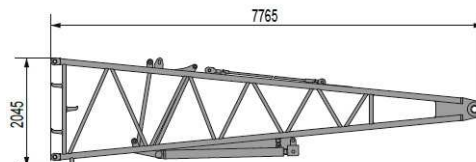
Length: 0,86m  
Width: 0,86m  
Height: 0.73m  
Weight: 2152 kg



# TRANSPORT | DIMENSIONS AND WEIGHTS

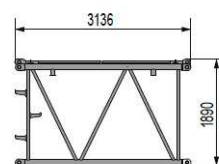
## LOWER BOOM X1

Length: 7.765m  
Width: 1830m  
Height: 2.045m  
Weight: 2012 kg



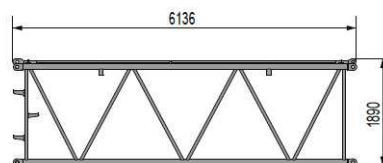
## BOOM SECTION 3M X2

Length: 3.136m  
Width: 1.700m  
Height: 1890m  
Weight: 663 kg



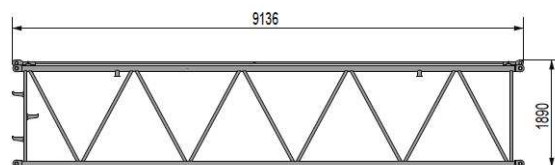
## BOOM SECTION 6M X1

Length: 6.136m  
Width: 1.700m  
Height: 1.890m  
Weight: 1086 kg



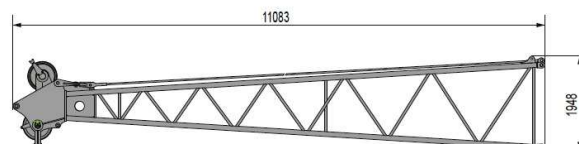
## BOOM SECTION 9M X5

Length: 9.136m  
Width: 1.700m  
Height: 1.89m  
Weight: 1361 kg



## BOOM HEAD X1

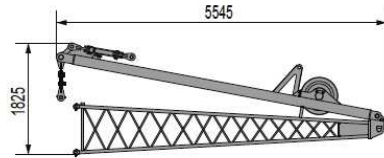
Length: 11.083m  
Width: 1.810m  
Height: 1948m  
Weight: 2460 kg



# TRANSPORT | DIMENSIONS AND WEIGHTS

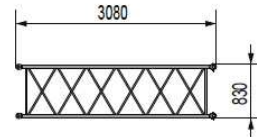
## FIX JIB LOWER BOOM

Length: 5.545m  
Width: 1.808m  
Height: 1.825m  
Weight: 919 kg



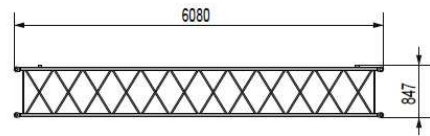
## FIX JIB EXTENSION 3M

Length: 3.080m  
Width: 1.006m  
Height: 0.83m  
Weight: 118.5g



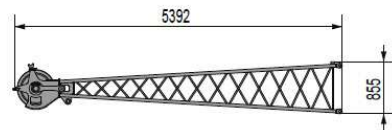
## FIX JIB EXTENSION 6M

Length: 6.060m  
Width: 1.006m  
Height: 0.847m  
Weight: 225g



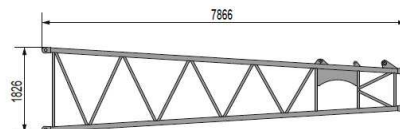
## FIX JIB HEAD X1

Length: 5.392m  
Width: 0.991m  
Height: 0.855m  
Weight: 314 kg



## ADAPTER PIECE X1

Length: 7.866m  
Width: 1.810m  
Height: 1.825m  
Weight: 1496g

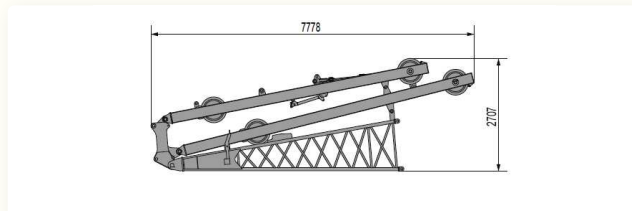




# TRANSPORT | DIMENSIONS AND WEIGHTS

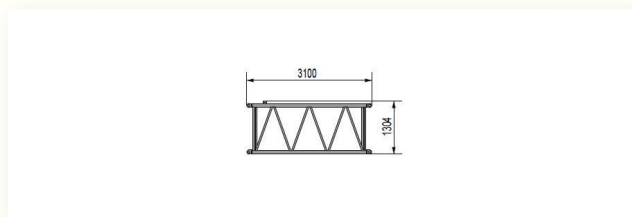
## LUFFING JIB LOWER BOOM X1

Length: 7.778m  
Width: 1.420m  
Height: 2.707m  
Weight: 3051 kg



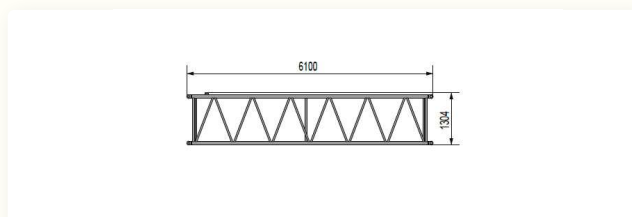
## LUFFING JIB EXTENSION 3M X1

Length: 3.100m  
Width: 1.250m  
Height: 1.304m  
Weight: 280 kg



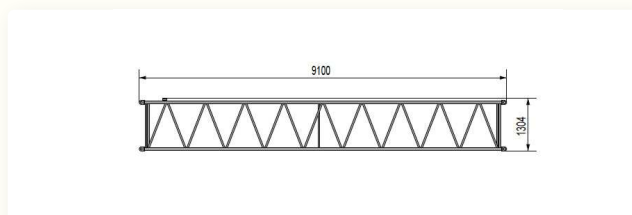
## LUFFING JIB EXTENSION 6M X3

Length: 6.100m  
Width: 1.250m  
Height: 1.304m  
Weight: 495 kg



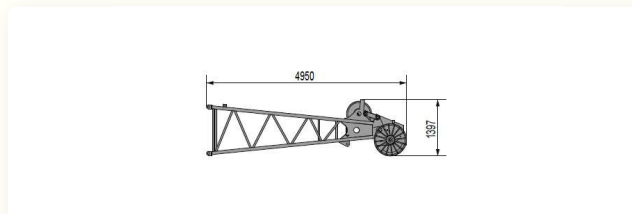
## LUFFING JIB EXTENSION 9M X2

Length: 9.100m  
Width: 1.250m  
Height: 1.404m  
Weight: 709 kg

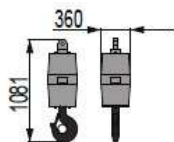


## LUFFING JIB HEAD X1

Length: 7.866m  
Width: 1.810m  
Height: 1.825m  
Weight: 1496g

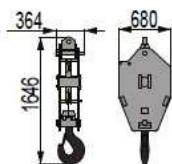


# TRANSPORT | DIMENSIONS AND WEIGHTS



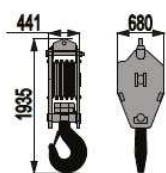
## 15T HOOK X1

Length: 0.360m  
Width: 0.360m  
Height: 1.081m  
Weight: 328 kg



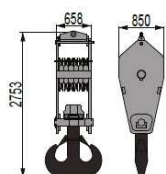
## 40T HOOK X1

Length: 0.680m  
Width: 0.364m  
Height: 1.646m  
Weight: 550 kg



## 80T HOOK X1

Length: 0.680m  
Width: 0.441m  
Height: 1.935m  
Weight: 1030 kg

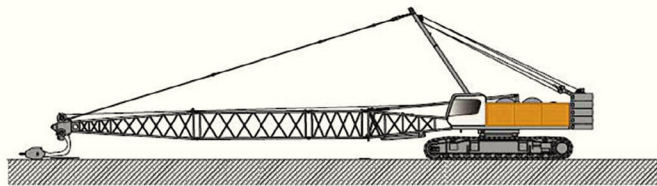
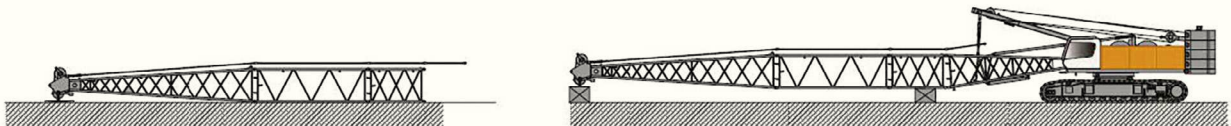
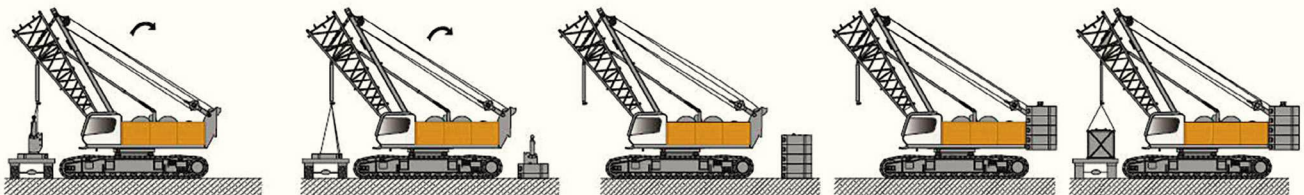
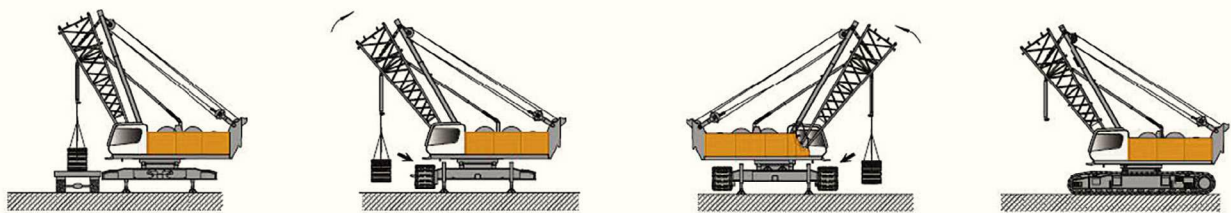
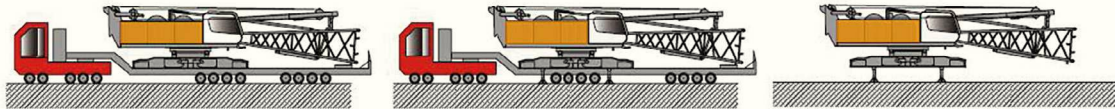


## 135T HOOK X1

Length: 0.850m  
Width: 0.658m  
Height: 2.753m  
Weight: 2809 kg



# TRANSPORT | DIMENSIONS AND WEIGHTS





# PV-E CRANE

**PV-E Crane B.V.**

Everdenberg 17

4902 TT Oosterhout

The Netherlands

+31 (0)184 - 425 949

[www.pv-ecrane.com](http://www.pv-ecrane.com)

[info@pvecrane.com](mailto:info@pvecrane.com)

## THE NEW STANDARD IN ELECTRIC CRAWLER CRANES



*Courtesy of CraneMarket.com*