

Electric Crawler Crane

# MODEL ECT120



Eco-friendly



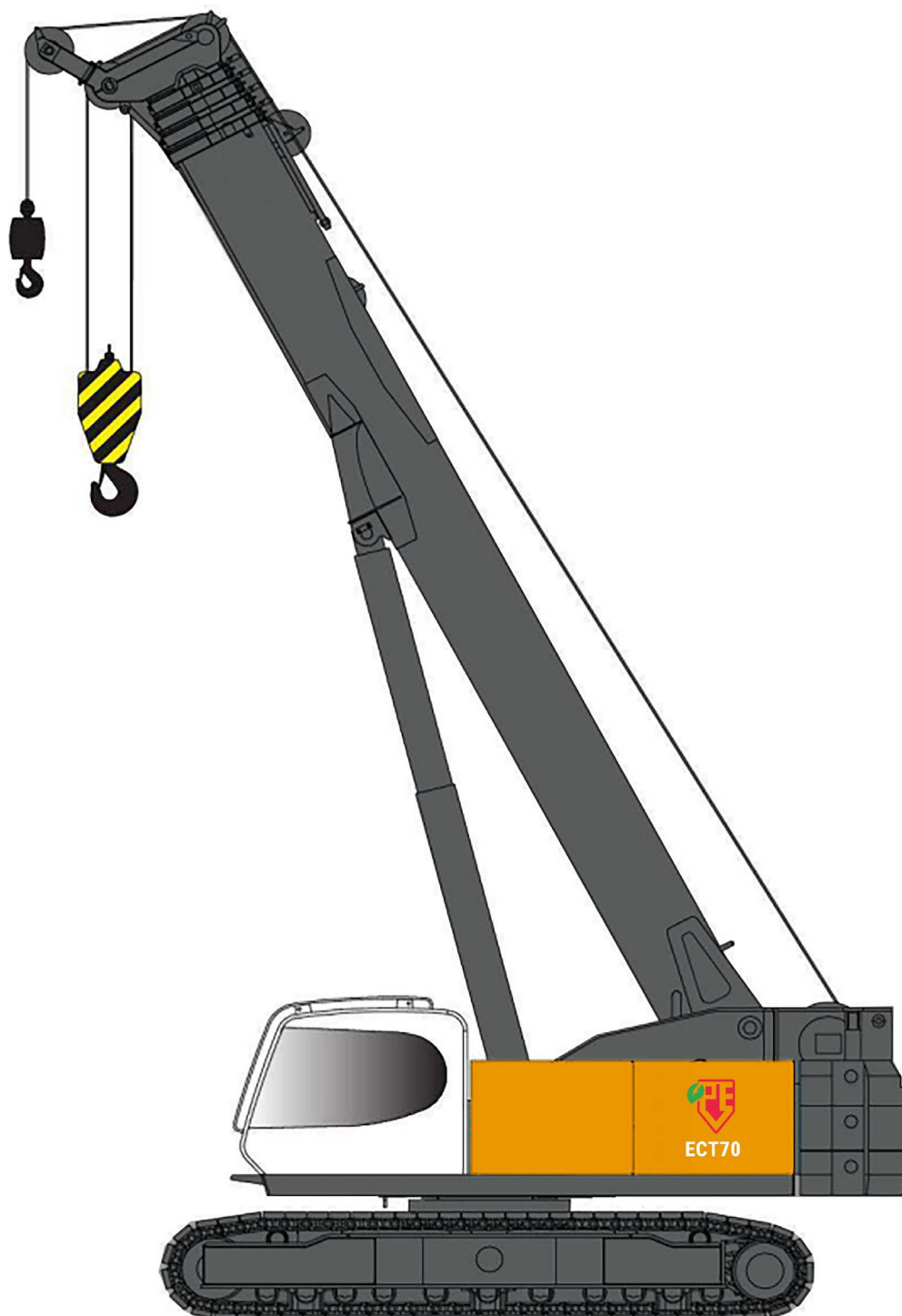
100% electric



Less noise



Zero emission



**PV-E Crane B.V.**  
Everdenberg 17  
4902 TT Oosterhout

+31 (0)184 - 425 949  
[www.pv-ecrane.com](http://www.pv-ecrane.com)  
[info@pv-ecrane.com](mailto:info@pv-ecrane.com)



**PV-E CRANE**

*Courtesy of CraneMarket.com*

# CONTENTS

---

<b>1 Features &amp; technical data</b>	<b>Pagina 3</b>
<b>2 Safety device</b>	<b>Pagina 3</b>
<b>3 Overall dimension</b>	<b>Pagina 4</b>
<b>4 Machine configuration</b>	<b>Pagina 5</b>
<b>5 Notes for load chart</b>	<b>Pagina 6</b>
<b>6 Working range-boom</b>	<b>Pagina 7</b>
<b>7 Boom load chart</b>	<b>Pagina 8</b>
<b>8 Short runner load chart</b>	<b>Pagina 9 t/m 12</b>
<b>9 Working range-fixed jib A</b>	<b>Pagina 13</b>
<b>10 Boom load chart</b>	<b>Pagina 14</b>
<b>11 Working range-fixed jib B</b>	<b>Pagina 15</b>
<b>12 Transportation dimensions and weights</b>	<b>Pagina 16 t/m 23</b>



# FEATURES & TECHNICAL DATA

---



## Power system

200kW Eletromotor  
260kWh/650 volt battery pack  
( 2 x 130kWh interchangeable)  
Lithium-iron-phosphate (LiFeP04)  
Interchangeable  
100% maintenance free and recycleble  
Work hours: 7,5-8 hours  
Fully recharged: 6,5 hour (63A)  
Active cooling system



## Hydraulic system

The hydraulic system is load sensor valve controle system, the main pump is double variable pump, main valve is 6 series M7 valve. The hoist mechanism, undercarriage adopt the variable system, and van realize stepless shift gears.  
Hydraulic oil tank capacity: 1750L



## Boom device

Use the imported high strenght steel plate, the U-type section lifting boom with fine designed and manufactured, the dynamic performance is much better. The telescopic mechanism is composed of cylinder and rope blocks, with better telescopic performance.



## Self-assembly device

The superstructure is equipped with self-assembly cylinder and undercarriage is equipped with outrigger cylinder. The counterweight, central ballast track and extension frame can be realized with self-assembly fuction; High efficiency, safety and fast self-assembly fuction can fulfill the quick assembly

# SAFETY DEVICE

---

## Moment limiter

Import moment limiter system, monitor the base machine's status at real-time, and limit to the overload operation.

Display current rated load, actual load, working radius, boom elevation, wind speed, pilot pressure, engine parameter (Rev., engine oil pressure, water temperature) etc. at the real-time, and provide sound light alarm and limit.

## Hoisting Height Limiter

Avoid hook pulley block bump with boom head extrusion.

## Lowering Dept Limiter

When the hook is under max. allowed lowering dept. prevent the wire rope coming off the hoist.

## Caution Light

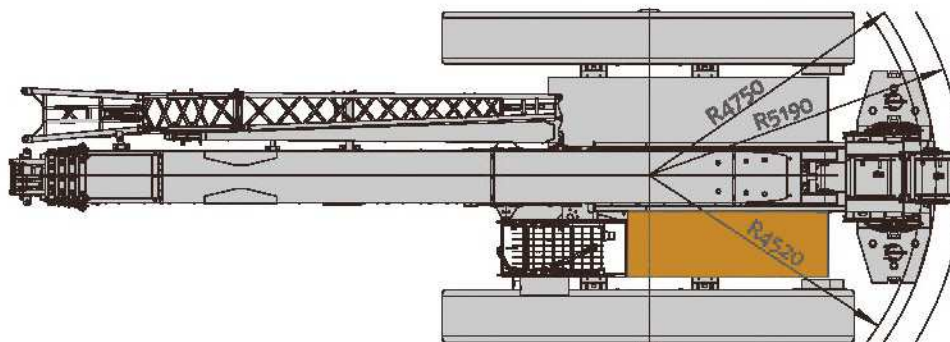
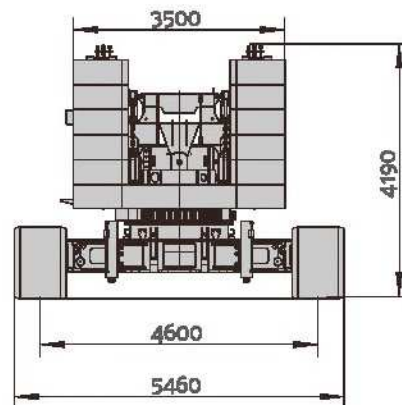
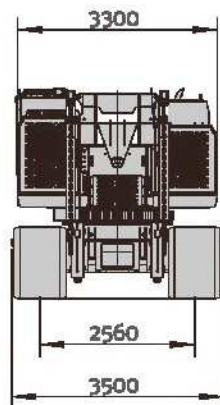
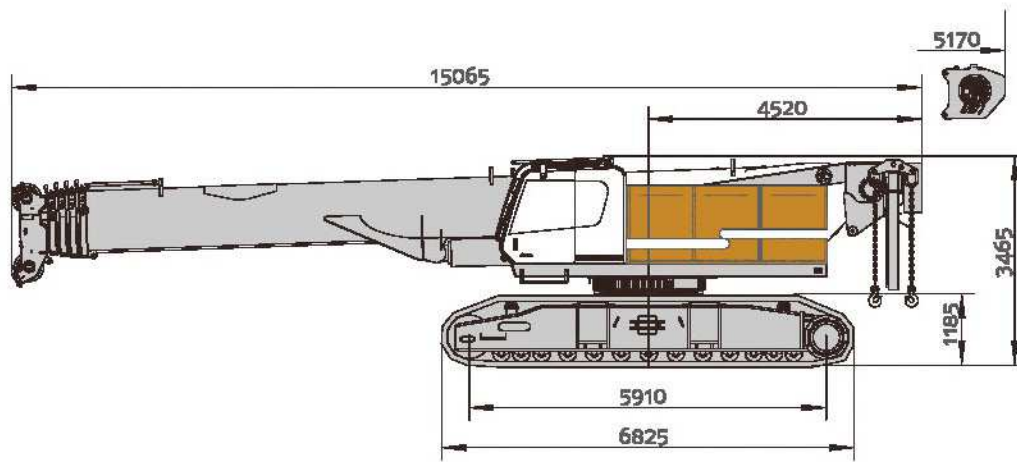
The boom head has caution light, and outside cab installs with tri-color light.

Tri-color light (red. yellow, green) display the current load status of crane

## Brake

The main aux.hoist mechanism, slewing mechanism, undercarriage are equipped with brake, to realize the brake with slow-down, and make the operation mechanism keep still during operating when the crane stops.

# OVERALL DIMENSIONS



# MACHINE CONFIGURATION



Boom	Short runner	Long runner	Fixed jib A	Fixed jib B
Max. lifting capacity: 100tx4m	Max. lifting capacity: 8tx4m	Max. lifting capacity: 11tx4m	Max. lifting capacity: 13.6tx5t	Max. lifting capacity: 6.6tx5m
Max. boom combination: 50m	Max. boom combination: 50+0.6m	Max. boom combination: 50+3.2m	Max. boom combination: 50+15m	Max. boom combination: 50+21m



# NOTES FOR LOAD CHART

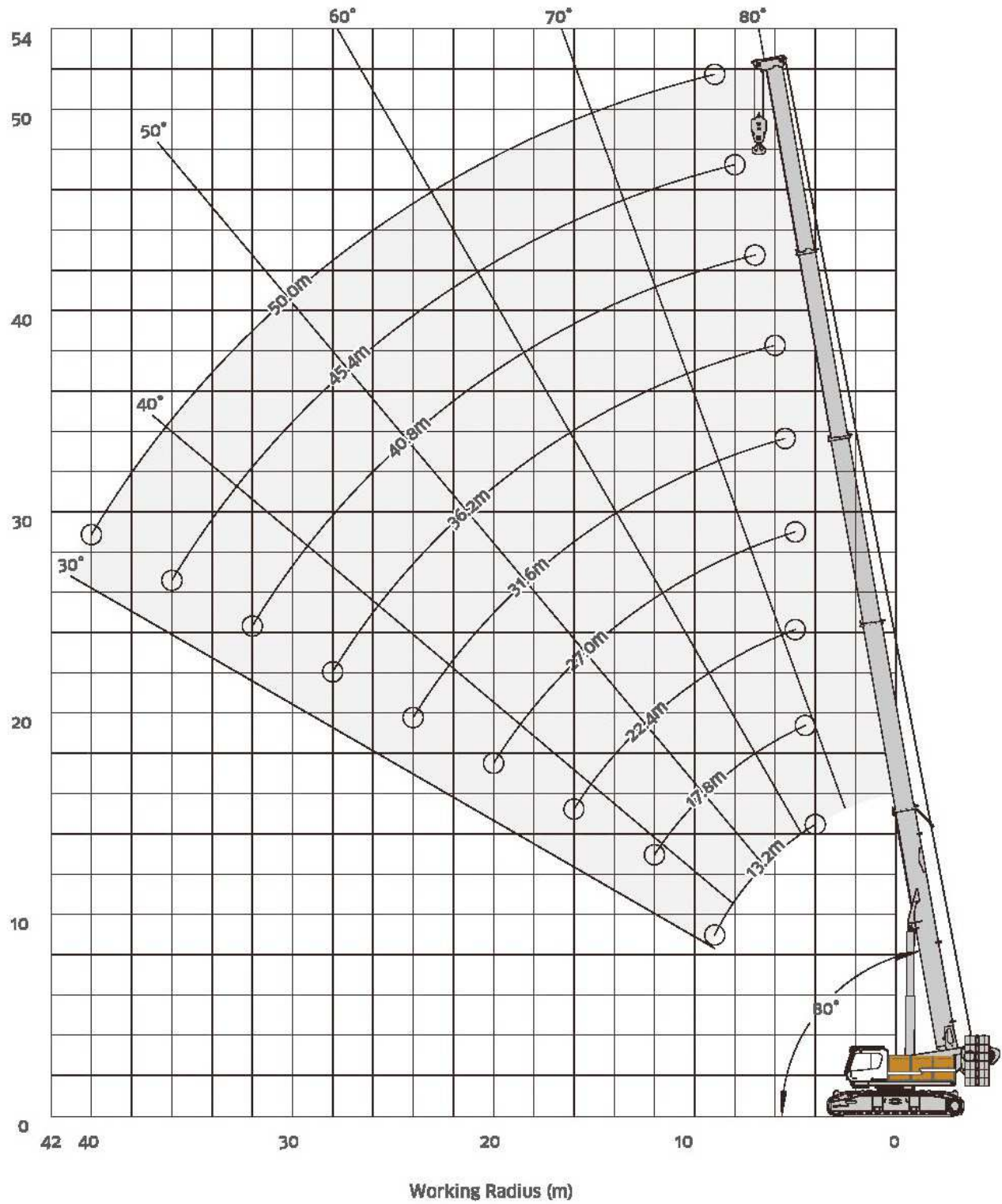
- 1** This crane is calculated according to EN13000 standard;
- 2** The lifting capacities are for reference only. For actual lifting capacities please refer to the load chart in the cabin or operation manual. The lifting capacities as stated are only valid for lifting activities.
- 3** The unit in the load chart is (t), working radius is (m), the value in the load chart should be deduct the self-weight of hooks, slings, etc.;
- 4** Only installed with boom, the max. allowed working speed is 13.8m/s, other working conditions max. allowed working wind speed <9.8m/s;
- 5** Only installed with boom, wind speed >21m/s (other working conditions >15m/s), and the boom should be placed flatly;
- 6** Use the auxiliary pulley block when the lifting capacity is more than 74.3t;
- 7** The value in load chart is calculated based on balance load, not including impact load under sudden stop, ground conditions, wind force load, operation speed and other effect, if under such conditions, and the operator must reduce the load;
- 8** Counterweight combination, hook selection, crane operation please refer to Operation Manual strictly;
- 9** When the undercarriage width is less than 4600mm, and it needs to slew, please operate according to Operation Manual.

Load	No. of sheaves	No. lines	Weight
120T*	9	17	1450kg
75T*	5	10	1100kg
25T	1	3	435kg
9T	0	1	250kg

120T\*, 75T\*, its's either -or



# WORKING RANGE-BOOM





# BOOM LOAD CHART

Unit: t

Radius	Boom Length									Radius
	13.2m	17.8m	22.4m	27.0m	31.6m	36.2m	40.8m	45.4m	50.0m	
2.5m	120°									
3.0m	100°									
4.0m	100°									4.0m
4.5m	74.3	74.3								4.5m
5.0m	74.3	72.2	49.0	30.0						5.0m
5.5m	68.6	68.5	49.0	30.0	29.4					5.5m
6.0m	65.2	65.2	49.0	30.0	29.4	28.5				6.0m
7.0m	56.5	56.5	48.8	30.0	29.4	26.6	22.3			7.0m
8.0m	49.3	48.9	45.0	30.0	29.4	25.0	21.0	17.7		8.0m
9.0m	41.3	40.5	39.0	30.0	27.5	23.5	19.9	16.9	13.5	9.0m
10.0m		34.1	33.6	30.0	25.8	22.2	18.9	16.2	13.1	10.0m
12.0m		25.2	24.8	26.1	23.1	20.0	17.2	14.8	12.2	12.0m
14.0m			19.0	20.2	20.9	18.2	15.7	13.6	11.4	14.0m
16.0m			14.9	16.0	16.9	16.7	14.5	12.7	10.8	16.0m
18.0m				12.9	13.7	14.3	13.5	11.8	10.2	18.0m
20.0m				10.5	11.3	11.9	12.3	11.1	9.6	20.0m
22.0m					9.4	10.0	10.4	10.4	9.1	22.0m
24.0m					7.8	8.4	8.8	9.2	8.6	24.0m
26.0m						7.1	7.5	7.8	8.1	26.0m
28.0m						6.0	6.4	6.7	7.0	28.0m
30.0m							5.4	5.8	6.0	30.0m
32.0m							4.6	4.9	5.2	32.0m
34.0m								4.2	4.5	34.0m
36.0m								3.6	3.8	36.0m
38.0m									3.3	38.0m
40.0m									2.8	40.0m
Parts	10	10	7	4	4	4	3	3	2	Parts

\*Need Auxiliart Pulley

Unit: t

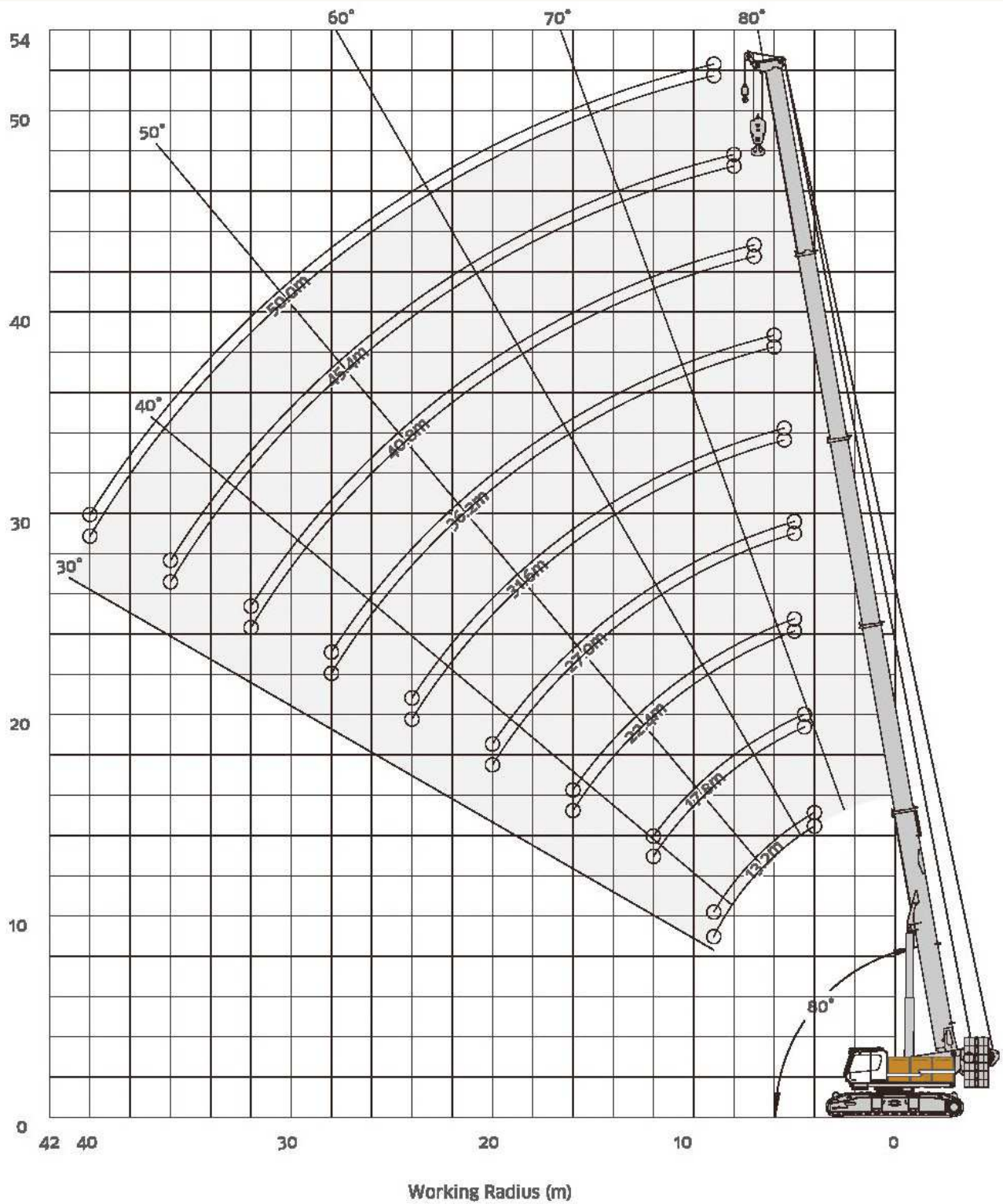
Radius	Boom Length									Radius
	13.2m	17.8m	22.4m	27.0m	31.6m	36.2m	40.8m	45.4m	50.0m	
4.0m	71.2									4.0m
4.5m	59.7	52.3								4.5m
5.0m	48.3	42.8	38.7	30.0						5.0m
5.5m	41.9	37.3	33.8	30.0	29.4					5.5m
6.0m	35.1	31.8	28.9	28.8	28.2	27.5				6.0m
7.0m	25.9	24.6	22.4	22.7	22.6	22.3	21.8			7.0m
8.0m	19.8	19.0	17.8	18.3	18.5	18.4	18.1	17.7		8.0m
9.0m	15.6	14.8	14.3	15.0	15.3	15.4	15.3	15.1	13.5	9.0m
10.0m		11.7	11.	12.4	12.8	13.0	13.3	12.9	12.8	10.0m
12.0m		7.5	7.1	8.3	9.1	9.4	9.6	9.6	9.6	12.0m
14.0m			4.3	5.5	6.3	6.9	7.1	7.3	7.3	14.0m
16.0m			2.3	3.5	4.3	4.9	5.3	5.5	5.6	16.0m
18.0m				2.0	2.8	3.3	3.8	4.1	4.2	18.0m
20.0m						2.2	2.6	3.0	3.2	20.0m
22.0m							1.7	2.0	2.3	22.0m
24.0m										24.0m
26.0m										26.0m
28.0m										28.0m
30.0m										30.0m
32.0m										32.0m
34.0m										34.0m
36.0m										36.0m
38.0m										38.0m
40.0m										40.0m
Parts	10	10	7	4	4	4	3	3	2	Parts

\*Need Auxiliart Pulley

\* Preliminary lifting table, may deviate after calculations / adjustments



# SHORT RUNNER LOAD CHART



# SHORT RUNNER LOAD CHART

										Unit
Radius	Boom Length									Radius
	13.2m	17.8m	22.4m	27.0m	31.6m	36.2m	40.8m	45.4m	50.0m	
4.0m	74.3									4.0m
4.5m	74.2	74.2								4.5m
5.0m	74.2	72.1	48.9	29.9						5.0m
5.5m	68.5	68.4	48.9	29.9	29.3					5.5m
6.0m	65.1	65.1	48.9	29.9	29.3	28.4				6.0m
7.0m	56.4	56.4	48.7	29.9	29.3	26.5	22.2			7.0m
8.0m	49.2	48.8	44.9	29.9	29.3	24.9	20.9	17.6		8.0m
9.0m	41.2	40.4	38.9	29.9	27.4	23.4	19.8	16.8	13.4	9.0m
10.0m		34.0	33.5	29.9	25.7	22.1	18.8	16.1	13.0	10.0m
12.0m		25.1	24.7	26.0	23.0	19.9	17.1	14.7	12.1	12.0m
14.0m			18.9	20.1	20.8	18.1	15.6	13.5	11.3	14.0m
16.0m			14.8	15.9	16.8	16.6	14.4	12.6	10.7	16.0m
18.0m				12.8	13.6	14.2	13.4	11.7	10.1	18.0m
20.0m				10.4	11.2	11.8	12.2	11.0	9.5	20.0m
22.0m					9.3	9.9	10.3	10.3	9.0	22.0m
24.0m					7.7	8.3	8.7	9.1	8.5	24.0m
26.0m						7.0	7.4	7.7	8.0	26.0m
28.0m						5.9	6.3	6.6	6.9	28.0m
30.0m							5.3	5.7	5.9	30.0m
32.0m							4.5	4.8	5.1	32.0m
34.0m								4.1	4.4	34.0m
36.0m								3.5	3.7	36.0m
38.0m									3.2	38.0m
40.0m									2.7	40.0m
Parts	10	10	7	4	4	4	3	3	2	Parts

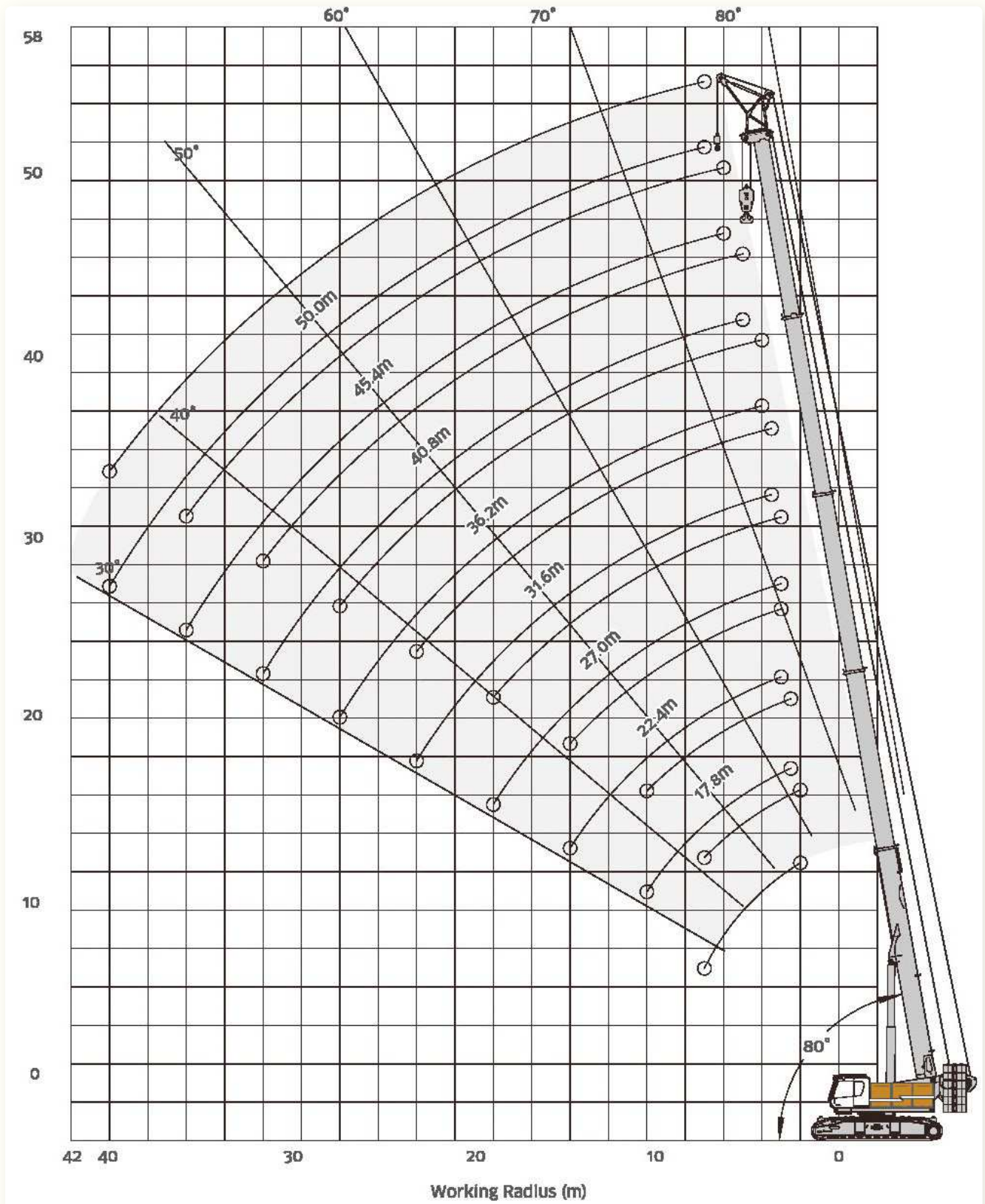
										Unit
Radius	Boom Length									Radius
	13.2m	17.8m	22.4m	27.0m	31.6m	36.2m	40.8m	45.4m	50.0m	
4.0m	8.0									4.0m
4.5m	8.0	8.0								4.5m
5.0m	8.0	8.0	8.0	8.0						5.0m
5.5m	8.0	8.0	8.0	8.0	8.0					5.5m
6.0m	8.0	8.0	8.0	8.0	8.0	8.0				6.0m
7.0m	8.0	8.0	8.0	8.0	8.0	8.0	8.0			7.0m
8.0m	8.0	8.0	8.0	8.0	8.0	8.0	8.0	8.0		8.0m
9.0m	8.0	8.0	8.0	8.0	8.0	8.0	8.0	8.0	8.0	9.0m
10.0m		8.0	8.0	8.0	8.0	8.0	8.0	8.0	8.0	10.0m
12.0m		8.0	8.0	8.0	8.0	8.0	8.0	8.0	8.0	12.0m
14.0m			8.0	8.0	8.0	8.0	8.0	8.0	8.0	14.0m
16.0m			8.0	8.0	8.0	8.0	8.0	8.0	8.0	16.0m
18.0m				8.0	8.0	8.0	8.0	8.0	8.0	18.0m
20.0m					8.0	8.0	8.0	8.0	8.0	20.0m
22.0m					8.0	8.0	8.0	8.0	8.0	22.0m
24.0m					7.8	8.0	8.0	8.0	8.0	24.0m
26.0m						7.1	7.5	7.8	8.0	26.0m
28.0m						6.0	6.4	6.7	7.0	28.0m
30.0m								5.8	6.0	30.0m
32.0m								4.9	5.2	32.0m
34.0m								4.2	4.5	34.0m
36.0m								3.6	3.8	36.0m
38.0m									3.3	38.0m
40.0m									2.8	40.0m
Parts	1	1	1	1	1	1	1	1	1	Parts

\* Preliminary lifting table, may deviate after calculations / adjustments





# SHORT RUNNER LOAD CHART



# SHORT RUNNER LOAD CHART

Unit:t

Long Runner	Main Boom	360°	4500	36.6t	15t	0.3°	Main Hook			
Radius	Boom Length									Radius
	13.2m	17.8m	22.4m	27.0m	31.6m	36.2m	40.8m	45.4m	50.0m	
4.0m	74.3									4.0m
4.5m	72.8	72.8								4.5m
5.0m	72.8	70.7	47.5	28.5						5.0m
5.5m	67.1	67.0	47.5	28.5	27.9					5.5m
6.0m	63.7	63.7	47.5	28.5	27.9	27.0				6.0m
7.0m	55.0	55.0	47.3	28.5	27.9	25.1	20.8			7.0m
8.0m	47.8	47.4	43.5	28.5	27.9	23.5	19.5	16.2		8.0m
9.0m	39.8	39.0	37.5	28.5	26.0	22.0	18.4	15.4	12.0	9.0m
10.0m		32.6	32.1	28.5	24.3	20.7	17.4	14.7	11.6	10.0m
12.0m		23.7	23.3	24.6	21.6	18.5	15.7	13.3	10.7	12.0m
14.0m			17.5	17.3	17.0	16.7	14.2	12.1	9.9	14.0m
16.0m			13.4	13.3	13.2	13.1	13.0	11.2	9.3	16.0m
18.0m				11.4	11.2	11.0	10.6	10.3	8.7	18.0m
20.0m				9.0	8.8	8.6	8.5	8.3	8.1	20.0m
22.0m					7.9	7.7	7.5	7.3	7.1	22.0m
24.0m					6.3	6.1	5.9	5.7	5.5	24.0m
26.0m						5.6	5.3	5.	4.9	26.0m
28.0m						4.5	4.3	4.1	3.9	28.0m
30.0m							3.9	3.7	3.5	30.0m
32.0m							3.1	2.9	2.7	32.0m
34.0m								2.7	2.5	34.0m
36.0m								2.1	1.9	36.0m
38.0m									1.5	38.0m
40.0m									1.0	40.0m
Parts	10	10	7	4	4	4	3	3	2	Parts

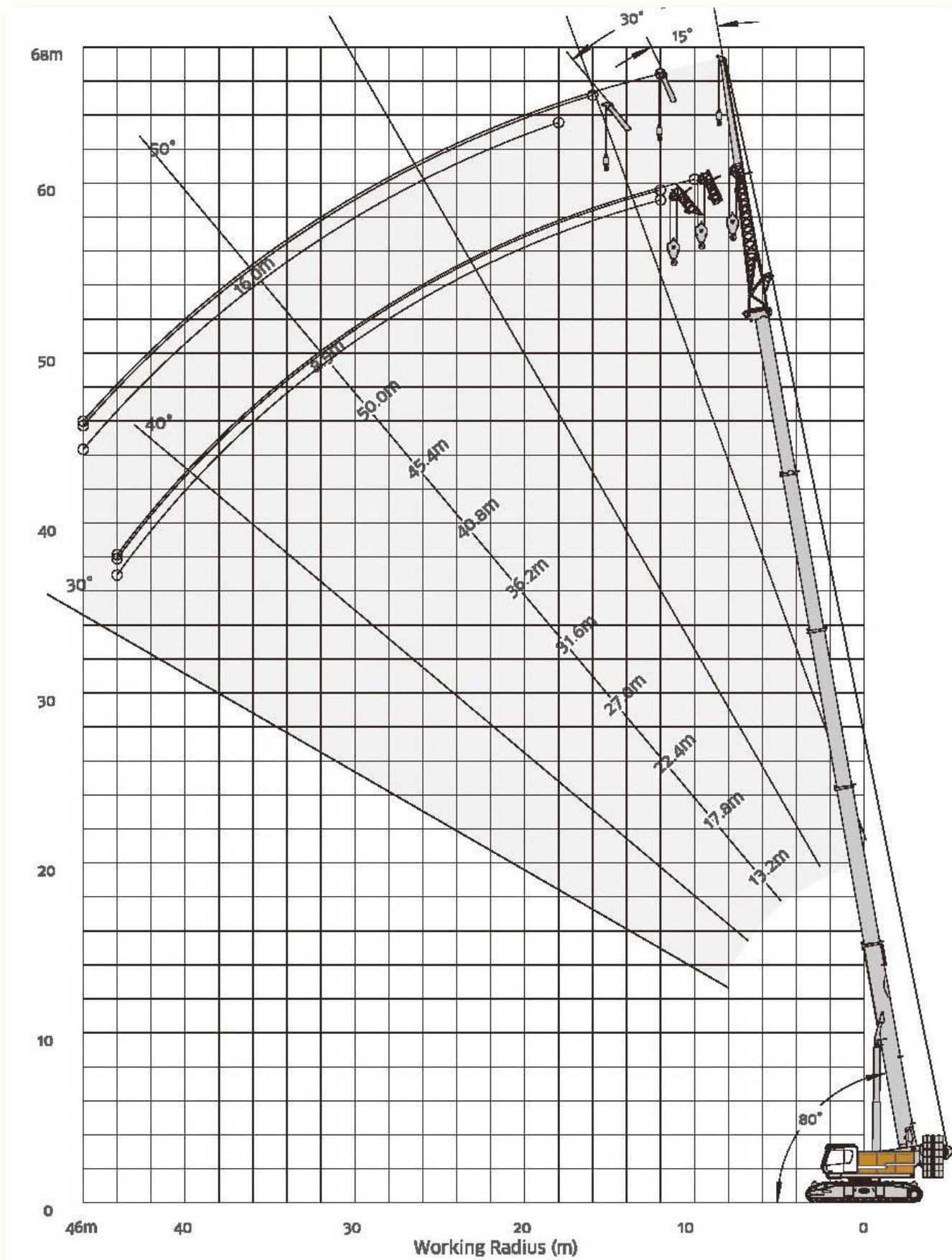
Unit:t

Long Runner	Main Boom	360°	4500	36.6t	15t	0.3°	Aux. Hook			
Radius	Boom Length									Radius
	13.2m	17.8m	22.4m	27.0m	31.6m	36.2m	40.8m	45.4m	50.0m	
4.0m	11.0									4.0m
4.5m	11.0	11.0								4.5m
5.0m	11.0	11.0	11.0							5.0m
5.5m	11.0	11.0	11.0	11.0						5.5m
6.0m	11.0	11.0	11.0	11.0						6.0m
7.0m	11.0	11.0	11.0	11.0	11.0					7.0m
8.0m	11.0	11.0	11.0	11.0	11.0	11.0				8.0m
9.0m	11.0	11.0	11.0	11.0	11.0	11.0	11.0			9.0m
10.0m		11.0	11.0	11.0	11.0	11.0	11.0	11.0		10.0m
12.0m		11.0	11.0	11.0	11.0	11.0	11.0	11.0	11.0	12.0m
14.0m			11.0	11.0	11.0	11.0	11.0	11.0	11.0	14.0m
16.0m			11.0	11.0	11.0	11.0	11.0	11.0	10.8	16.0m
18.0m				11.0	11.0	11.0	11.0	11.0	10.2	18.0m
20.0m				10.5	10.5	10.5	10.5	10.5	9.6	20.0m
22.0m					9.4	9.3	9.2	9.1	9.1	22.0m
24.0m					7.8	7.7	7.6	7.5	7.3	24.0m
26.0m						7.1	7.0	6.9	6.8	26.0m
28.0m						6.0	5.9	5.8	5.7	28.0m
30.0m							5.4	5.3	5.2	30.0m
32.0m							4.6	4.5	4.3	32.0m
34.0m								4.2	4.1	34.0m
36.0m								3.6	3.5	36.0m
38.0m									3.2	38.0m
40.0m									2.8	40.0m
Parts	2	2	2	2	2	2	2	2	2	Parts

\* Preliminary lifting table, may deviate after calculations / adjustments






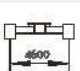

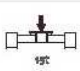
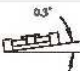

# WORKING RANGE-FIXED JIB A






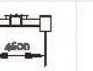






# SHORT RUNNER

Unit:t

Fixed Jib	Main Boom															
																
	Boom Length															
Radius	13.2m			36.2m			40.8m			45.4m			50.0m			Radius
	0°	15°	30°	0°	15°	30°	0°	15°	30°	0°	15°	30°	0°	15°	30°	
5.0m	13.6	11.0														5.0m
6.0m	12.9	10.5	8.0													6.0m
7.0m	12.1	10.0	7.8	13.6												7.0m
8.0m	11.4	9.5	7.6	13.2			12.1									8.0m
9.0m	10.7	9.0	7.4	12.8	11.0		11.8			9.7						9.0m
10.0m	9.9	8.5	7.2	12.5	10.7		11.5	10.2		9.5			6.3			10.0m
12.0m	8.4	7.5	6.8	11.7	10.0	8.0	10.8	9.6	8.0	9.0	8.0		6.0	5.5		12.0m
14.0m	7.0	6.5	6.4	10.9	9.3	7.5	10.2	9.0	7.5	8.5	7.6	7.3	5.7	5.2	4.6	14.0m
16.0m	5.5	5.5	6.0	10.2	8.7	7.0	9.5	8.5	7.1	8.0	7.1	6.9	5.4	5.0	4.4	16.0m
18.0m				9.4	8.0	6.5	8.9	7.9	6.6	7.5	6.7	6.4	5.1	4.7	4.1	18.0m
20.0m				8.6	7.3	6.0	8.2	7.3	6.1	7.0	6.3	6.0	4.8	4.4	3.9	20.0m
22.0m				7.9	6.7	5.5	7.6	6.7	5.7	6.5	5.8	5.6	4.5	4.1	3.6	22.0m
24.0m				7.1	6.0	5.0	6.9	6.1	5.2	6.0	5.4	5.1	4.2	3.9	3.4	24.0m
26.0m				6.2	5.3	4.5	6.3	5.6	4.8	5.5	4.9	4.7	3.9	3.6	3.2	26.0m
28.0m				5.2	4.7	4.0	5.4	5.0	4.3	5.0	4.5	4.3	3.6	3.3	2.9	28.0m
30.0m				4.4	4.0	3.5	4.5	4.4	3.8	4.5	4.1	3.8	3.3	3.0	2.7	30.0m
32.0m				3.6	3.3	3.0	3.8	3.8	3.4	4.0	3.6	3.4	3.0	2.8	2.4	32.0m
34.0m				3.0	2.7	2.5	3.2	3.2	2.9	3.3	3.2	2.9	2.7	2.5	2.2	34.0m
36.0m				2.5	2.0	2.0	2.6	2.7	2.4	2.8	2.8	2.5	2.4	2.2	2.0	36.0m
38.0m							2.1	2.1	2.0	2.3	2.3	2.1	2.1	1.9	1.7	38.0m
40.0m							1.7	1.5	1.5	1.8	1.9	1.6	1.8	1.7	1.5	40.0m
42.0m										1.4	1.4	1.2	1.5	1.4	1.2	42.0m
44.0m										1.0	1.0		1.2	1.1	1.0	44.0m
Parts	2	2	1	2	2	1	2	2	1	1	1	1	1	1	1	Parts

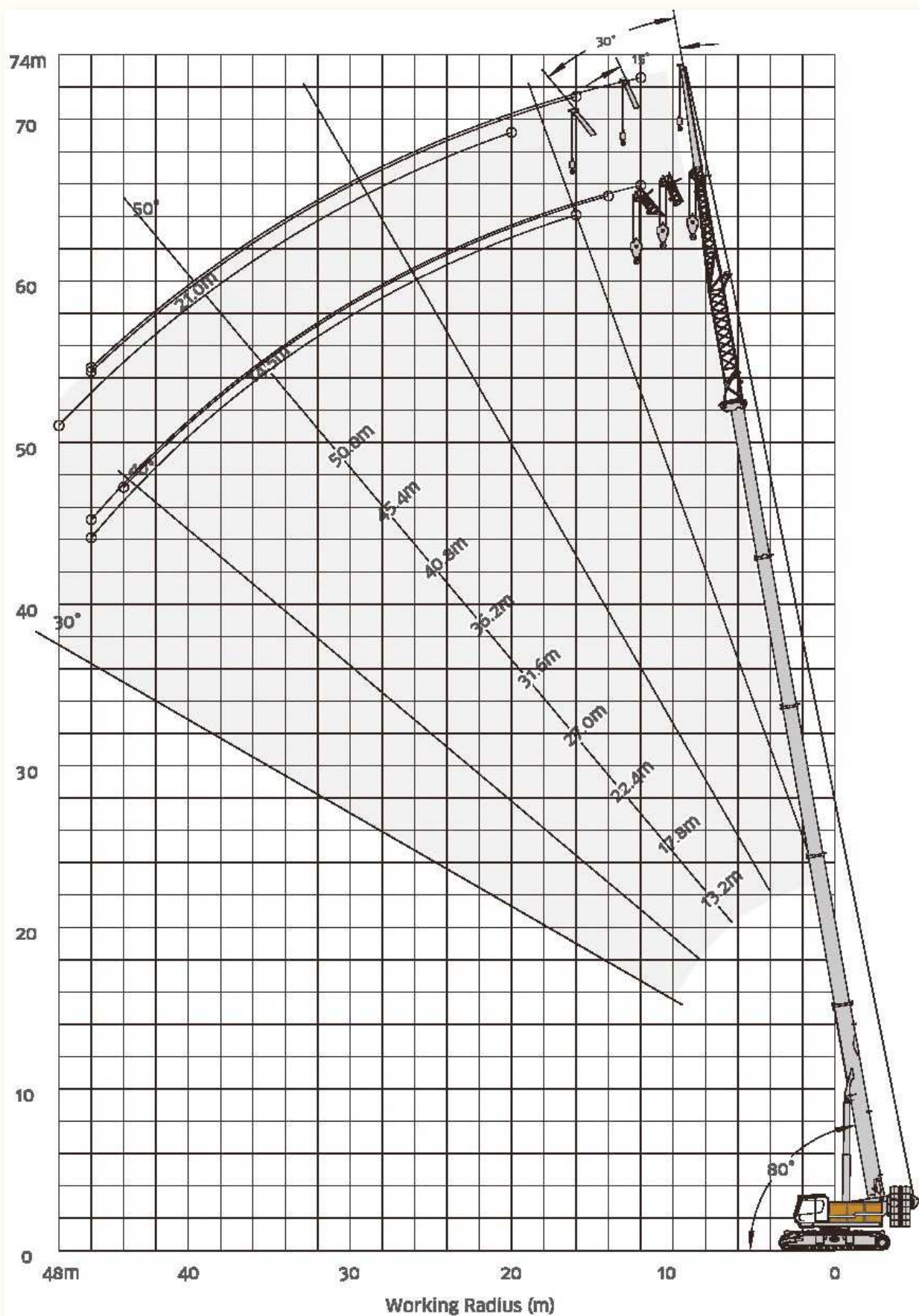
Unit:t

																		
Radius	Boom Length															Radius		
	13.2m			36.2m			40.8m			45.4m			50.0m					
	0°	15°	30°	0°	15°	30°	0°	15°	30°	0°	15°	30°	0°	15°	30°			
5.0m	5.5																5.0m	
6.0m	5.3																6.0m	
7.0m	5.1	3.6															7.0m	
8.0m	5.0	3.5		5.5													8.0m	
9.0m	4.8	3.4		5.4			4.6										9.0m	
10.0m	4.6	3.2	2.8	5.2			4.5			4.1							10.0m	
12.0m	4.2	3.0	2.7	5.0	3.6		4.3			3.9			3.7				12.0m	
14.0m	3.9	2.7	2.6	4.7	3.4		4.1	3.3		3.8	3.2		3.5				14.0m	
16.0m	3.5	2.5	2.5	4.4	3.3	2.8	3.9	3.1	2.6	3.6	3.1		3.4	3.0			16.0m	
18.0m				4.1	3.1	2.7	3.7	3.0	2.5	3.4	2.9	2.5	3.2	2.9	2.3		18.0m	
20.0m				3.9	2.9	2.5	3.5	2.8	2.4	3.2	2.8	2.4	3.1	2.7	2.2		20.0m	
22.0m				3.6	2.7	2.4	3.3	2.7	2.3	3.1	2.6	2.3	2.9	2.3	2.1		22.0m	
24.0m				3.3	2.6	2.3	3.1	2.5	2.2	2.9	2.5	2.2	2.8	2.5	2.0		24.0m	
26.0m				3.1	2.4	2.2	2.9	2.4	2.1	2.7	2.4	2.1	2.6	2.3	1.9		26.0m	
28.0m				2.8	2.2	2.0	2.7	2.2	2.0	2.6	2.2	2.0	2.5	2.2	1.8		28.0m	
30.0m				2.5	2.0	1.9	2.5	2.1	1.8	2.4	2.1	1.9	2.3	2.1	1.7		30.0m	
32.0m				2.2	1.9	1.8	2.3	1.9	1.7	2.2	1.9	1.7	2.2	1.9	1.7		32.0m	
34.0m				2.0	1.7	1.6	2.1	1.8	1.6	2.1	1.8	1.6	2.0	1.8	1.6		34.0m	
36.0m				1.7	1.5	1.5	1.9	1.6	1.5	1.9	1.7	1.5	1.8	1.7	1.5		36.0m	
38.0m							1.7	1.5	1.4	1.7	1.5	1.4	1.7	1.5	1.4		38.0m	
40.0m							1.5	1.3	1.3	1.5	1.4	1.3	1.5	1.4	1.3		40.0m	
42.0m										1.4	1.2	1.2	1.4	1.3	1.2		42.0m	
44.0m										1.2	1.1	1.1	1.2	1.1	1.1		44.0m	
46.0m													1.1	1.0	1.0		46.0m	
Parts	1	1	1	1	1	1	1	1	1	1	1	1	1	1	1	1	Parts	

\* Preliminary lifting table, may deviate after calculations / adjustments






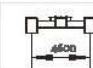


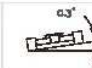

# WORKING RANGE-FIXED JIB B






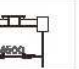


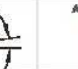



# SHORT RUNNER CHART

Unit:t

																		
Radius	13.2m			36.2m			40.8m			45.4m			50.0m			Radius		
	0°	15°	30°	0°	15°	30°	0°	15°	30°	0°	15°	30°	0°	15°	30°			
5.0m	6.6															5.0m		
6.0m	6.4	5.2														6.0m		
7.0m	6.1	5.0	4.3													7.0m		
8.0m	5.9	4.9	4.2													8.0m		
9.0m	5.6	4.7	4.1	6.6												9.0m		
10.0m	5.4	4.5	4.0	6.4	5.2		5.6									10.0m		
12.0m	4.9	4.2	3.7	6.1	5.0	4.3	5.3	4.6		5.1	4.5		4.1			12.0m		
14.0m	4.4	3.9	3.5	5.7	4.7	4.1	5.1	4.4	4.1	4.9	4.3	3.8	3.9	3.5		14.0m		
16.0m	4.0	3.5	3.3	5.4	4.5	3.9	4.8	4.2	3.9	4.6	4.1	3.6	3.7	3.3	3.3	16.0m		
18.0m	3.5	3.2	3.1	5.1	4.2	3.7	4.5	3.9	3.7	4.4	3.9	3.4	3.6	3.2	3.1	18.0m		
20.0m	3.0	2.8	2.8	4.7	4.0	3.5	4.3	3.7	3.5	4.1	3.7	3.3	3.4	3.0	3.0	20.0m		
22.0m		2.5	2.6	4.4	3.7	3.3	4.0	3.5	3.3	3.9	3.4	3.1	3.2	2.9	2.8	22.0m		
24.0m				4.0	3.5	3.1	3.7	3.3	3.1	3.7	3.2	2.9	3.0	2.7	2.7	24.0m		
26.0m				3.7	3.2	2.9	3.5	3.0	2.9	3.4	3.0	2.7	2.8	2.6	2.5	26.0m		
28.0m				3.4	3.0	2.6	3.2	2.8	2.7	3.2	2.8	2.5	2.6	2.4	2.4	28.0m		
30.0m				3.0	2.7	2.4	3.0	2.6	2.4	2.9	2.6	2.4	2.5	2.3	2.2	30.0m		
32.0m				5.7	2.5	2.2	2.7	2.4	2.2	2.7	2.4	2.2	2.3	2.1	2.1	32.0m		
34.0m				2.3	2.2	2.0	2.4	2.1	2.0	2.4	2.2	2.0	2.1	2.0	1.9	34.0m		
36.0m				2.0	2.0	1.8	2.2	1.9	1.8	2.2	2.0	1.8	1.9	1.8	1.8	36.0m		
38.0m				1.6	1.7	1.6	1.9	1.7	1.6	2.0	1.7	1.6	1.7	1.7	1.6	38.0m		
40.0m				1.3	1.5	1.4	1.6	1.5	1.4	1.7	1.5	1.5	1.5	1.5	1.5	40.0m		
42.0m					1.2	1.2	1.4	1.2	1.2	1.5	1.3	1.3	1.4	1.4	1.3	42.0m		
44.0m							1.1	1.0	1.0	1.2	1.1	1.1	1.2	1.2	1.2	44.0m		
46.0m										1.0			1.0		1.0	46.0m		
Parts	2	2	1	2	2	1	2	2	1	1	1	1	1	1	1	Parts		

Unit:t

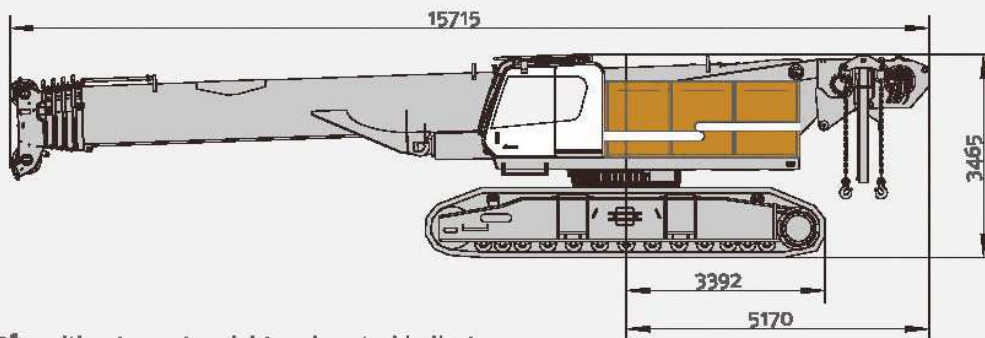
																								
21ft	13.2-50m																							
Radius	Boom Length																		Radius					
	13.2m			36.2m			40.8m			45.4m			50.0m											
	0°	15°	30°	0°	15°	30°	0°	15°	30°	0°	15°	30°	0°	15°	30°									
5.0m	3.9															5.0m								
6.0m	3.8															6.0m								
7.0m	3.7															7.0m								
8.0m	3.6	3.2														8.0m								
9.0m	3.5	3.1		3.9												9.0m								
10.0m	3.1	3.0		3.8			3.7									10.0m								
12.0m	3.2	2.9	2.6	3.6			3.5			3.5			2.9			12.0m								
14.0m	3.1	2.7	2.6	3.5	3.2		3.4	3.1		2.4			2.8			14.0m								
16.0m	2.9	2.5	2.6	3.3	3.1	2.6	3.2	3.0		3.2	2.9		2.7	2.5		16.0m								
18.0m	2.7	2.3	2.6	3.1	2.9	2.5	3.1	2.8	2.6	3.1	2.8	2.3	2.6	2.4		18.0m								
20.0m	2.5	2.2	2.6	2.9	2.8	2.4	2.9	2.7	2.5	2.9	2.7	2.2	2.5	2.3	2.1	20.0m								
22.0m		2.0	2.6	2.8	2.6	2.3	2.8	2.6	2.4	2.8	2.5	2.1	2.3	2.2	2.0	22.0m								
24.0m				2.6	2.5	2.3	2.6	2.4	2.3	2.6	2.4	2.0	2.2	2.1	2.0	24.0m								
26.0m				2.4	2.3	2.2	2.5	2.3	2.2	2.5	2.3	2.0	2.1	2.0	1.9	26.0m								
28.0m				2.2	2.2	2.1	2.3	2.2	2.1	2.3	2.2	1.9	2.0	1.9	1.8	28.0m								
30.0m				2.1	2.1	2.0	2.2	2.1	2.0	2.2	2.1	1.8	1.9	1.8	1.7	30.0m								
32.0m				1.9	1.9	1.9	2.0	1.9	1.9	2.0	1.9	1.7	1.8	1.8	1.7	32.0m								
34.0m				1.7	1.8	1.8	1.9	1.8	1.8	1.9	1.8	1.6	1.7	1.7	1.6	34.0m								
36.0m				1.5	1.6	1.8	1.7	1.7	1.7	1.7	1.7	1.5	1.6	1.6	1.5	36.0m								
38.0m				1.4	1.5	1.7	1.6	1.5	1.6	1.6	1.6	1.4	1.4	1.5	1.5	38.0m								
40.0m				1.2	1.3	1.6	1.4	1.4	1.5	1.4	1.5	1.3	1.3	1.4	1.4	40.0m								
42.0m					1.2	1.5	1.3	1.3	1.4	1.3	1.3	1.3	1.2	1.3	1.3	42.0m								
44.0m							1.1	1.1	1.3	1.1	1.2	1.2	1.1	1.2	1.2	44.0m								
46.0m								1.0	1.2	1.0	1.1	1.1	1.0	1.1	1.2	46.0m								
48.0m															1.1	48.0m								
Parts	1	1	1	1	1	1	1	1	1	1	1	1	1	1	1	Parts								

\* Preliminary lifting table, may deviate after calculations / adjustments

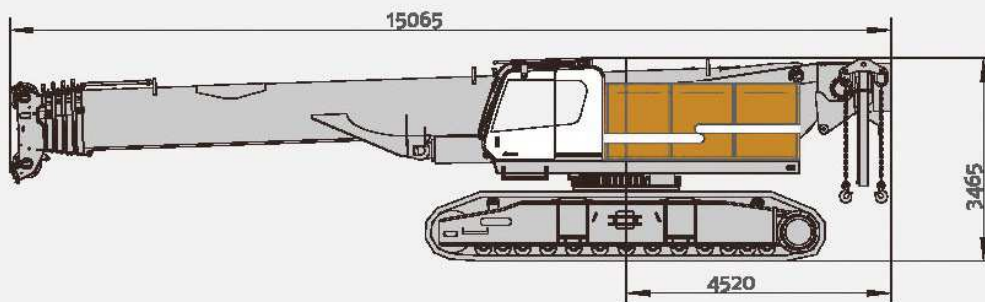


# TRANSPORT DIMENSIONS & WEIGHTS

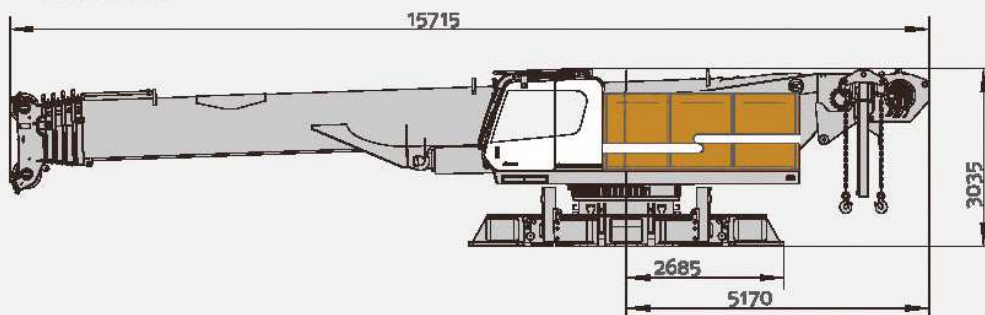
**70.0t** without counterweight and central ballast  
without extension frame, outrigger cylinder



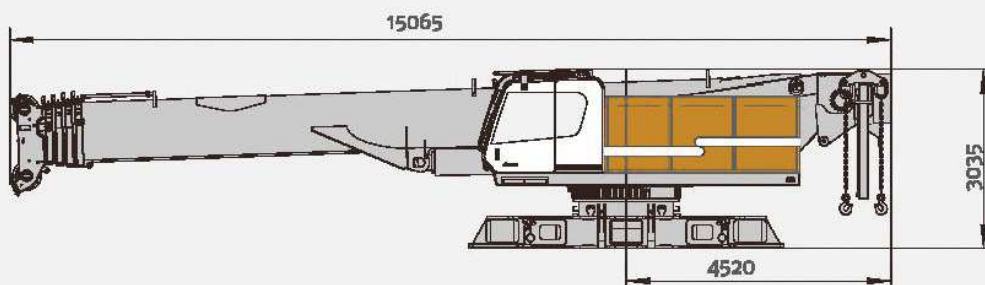
**63.2t** without counterweight and central ballast  
without extension frame, outrigger cylinder, winch 2



**50t** without counterweight and central ballast  
track frame,



**46.7t** without counterweight and central ballast, track frame , winch 2 and outrigger cylinder



# TRANSPORT, DIMENSIONS & WEIGHTS



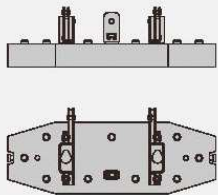
## Part A

Length: 880mm  
Width: 1200mm  
Height: 470mm  
Weight: 2,3t



## Part B

Length: 1200mm  
Width: 1200mm  
Height: 240mm  
Weight: 2,2t



## Part C

Length: 3500mm  
Width: 1440mm  
Height: 1000mm  
Weight: 10,7t

	Part A	Part B	Part C
0	0x	0x	0x
17,8	2x	1x	1x
27,2	6x	1x	1x
36,6	10x	1x	1x



## Center counterweight

Length: 1880mm  
Width: 1000mm  
Height: 840mm  
Weight: 7500 kg



## Extended frame

Length: 1160mm  
Width: 450mm  
Height: 540mm  
Weight: 0,56t



## Short runner

Length: 650mm  
Width: 570mm  
Height: 500mm  
Weight: 0,1t



## Longer runner

Length: 2650mm  
Width: 750mm  
Height: 600mm  
Weight: 0,15t



## Winch 2

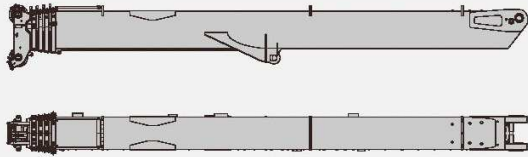
Length: 650mm  
Width: 570mm  
Height: 500mm  
Weight: 0,1t



## Replacement ballast for winch 2

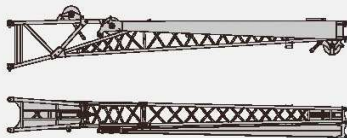
Length: 1350mm  
Width: 820mm  
Height: 380mm  
Weight: 2,2t

# TRANSPORT, DIMENSIONS & WEIGHTS



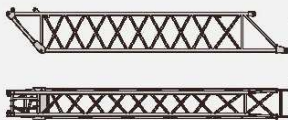
## Main boom

Length: 13720mm  
Width: 1380mm  
Height: 1760mm  
Weight: 17t



## Fixed jib

Length: 8950mm  
Width: 1075mm  
Height: 1650mm  
Weight: 1,65t



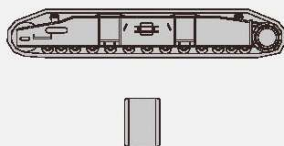
## 6m extended jib

Length: 6920mm  
Width: 775mm  
Height: 1105mm  
Weight: 0,5t



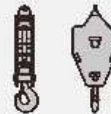
## 9t hock

Length: 950mm  
Width: 360mm  
Height: 360mm  
Weight: 0,3t



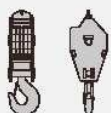
## Crawler

Length: 6830mm  
Width: 860mm  
Height: 1190mm  
Weight: 13t



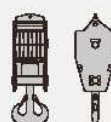
## 25t hock

Length: 1650mm  
Width: 680mm  
Height: 350mm  
Weight: 0,5t



## 75t hock

Length: 1950mm  
Width: 680mm  
Height: 530mm  
Weight: 1,1t



## 120t hock

Length: 2050mm  
Width: 740mm  
Height: 705mm  
Weight: 1,5t



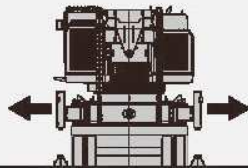
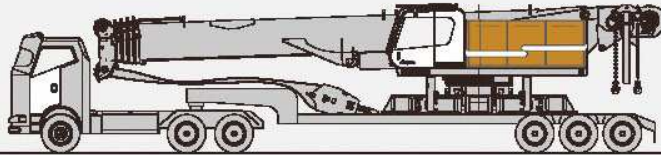


# TRANSPORT, DIMENSIONS & WEIGHTS

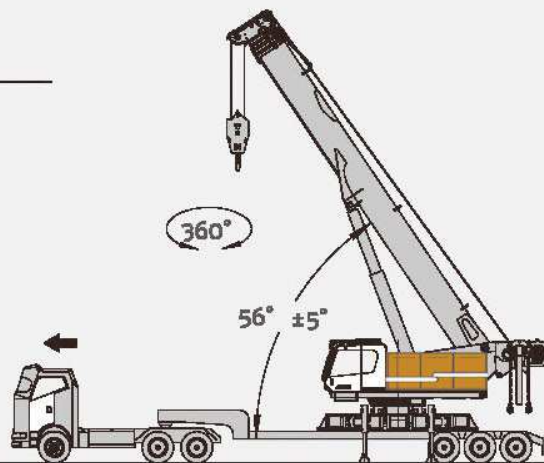
## Transportation Plan A

Width: 3000mm

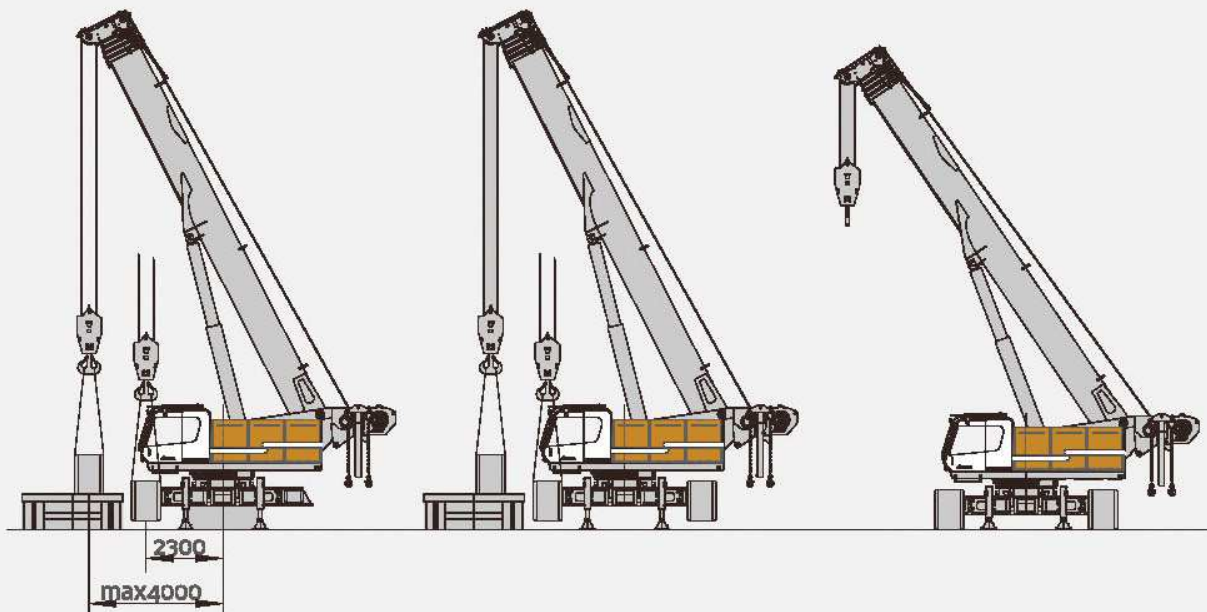
Weight: 50t



Hock	No. of Sheaves	No. Of Line	Weight
100t	7	15	1.5t
75t	5	11	1.1t
25t	1	3	0.5t
9t	0	1	0.3t

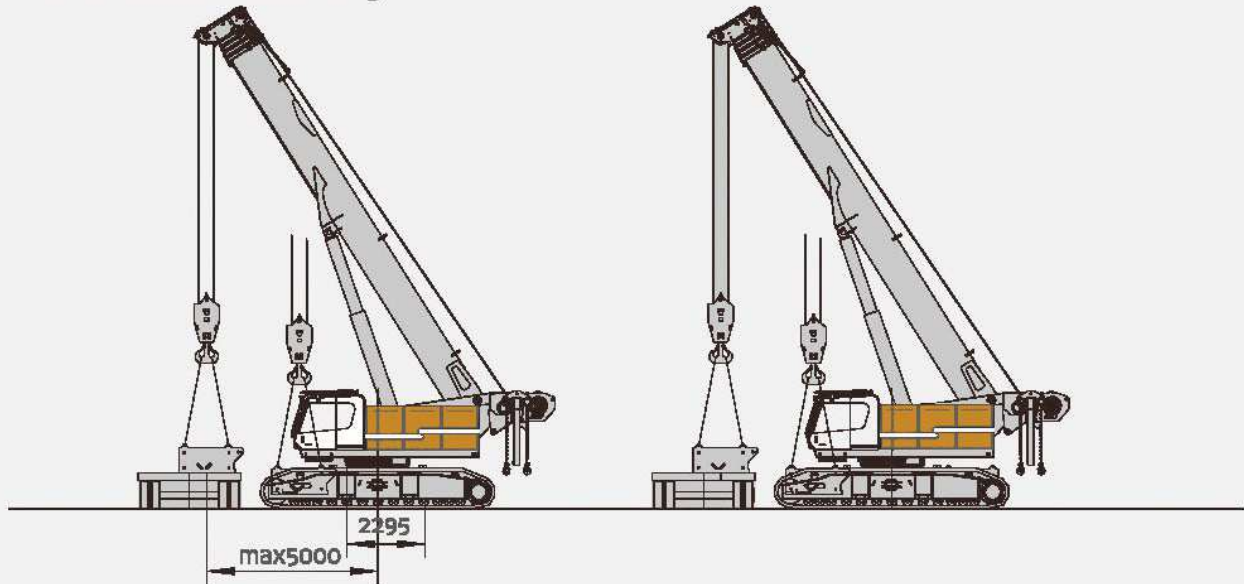


## Crawler Assembly

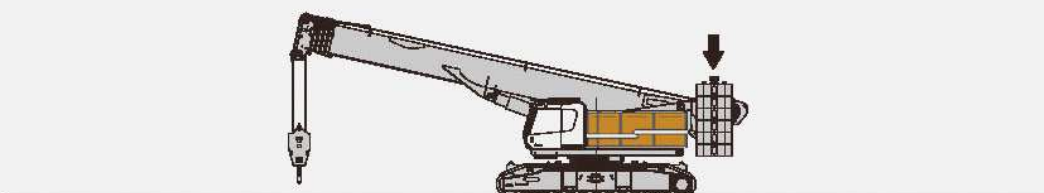
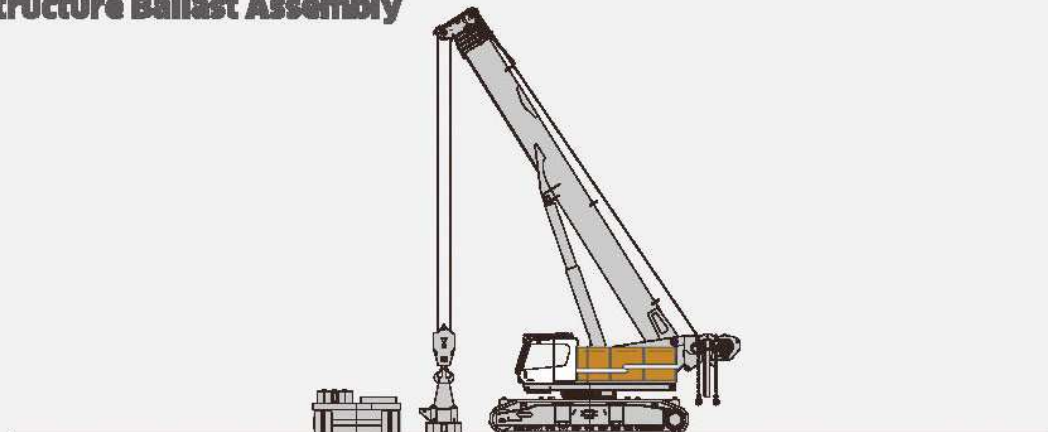


# TRANSPORT, DIMENSIONS & WEIGHTS

## Central Ballast Assembly



## Superstructure Ballast Assembly

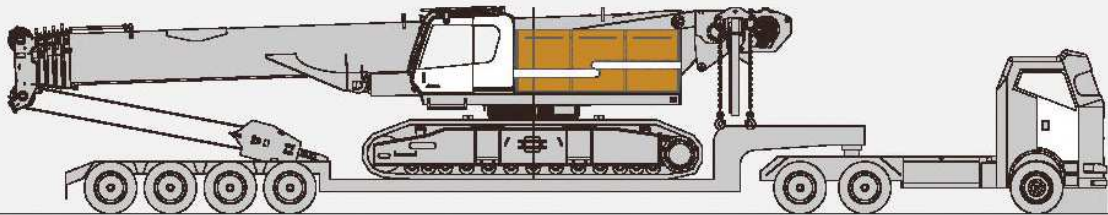


# TRANSPORT, DIMENSIONS & WEIGHTS

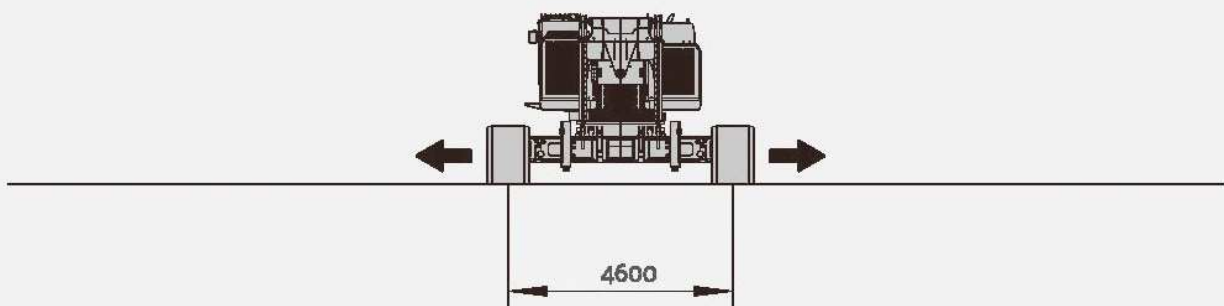
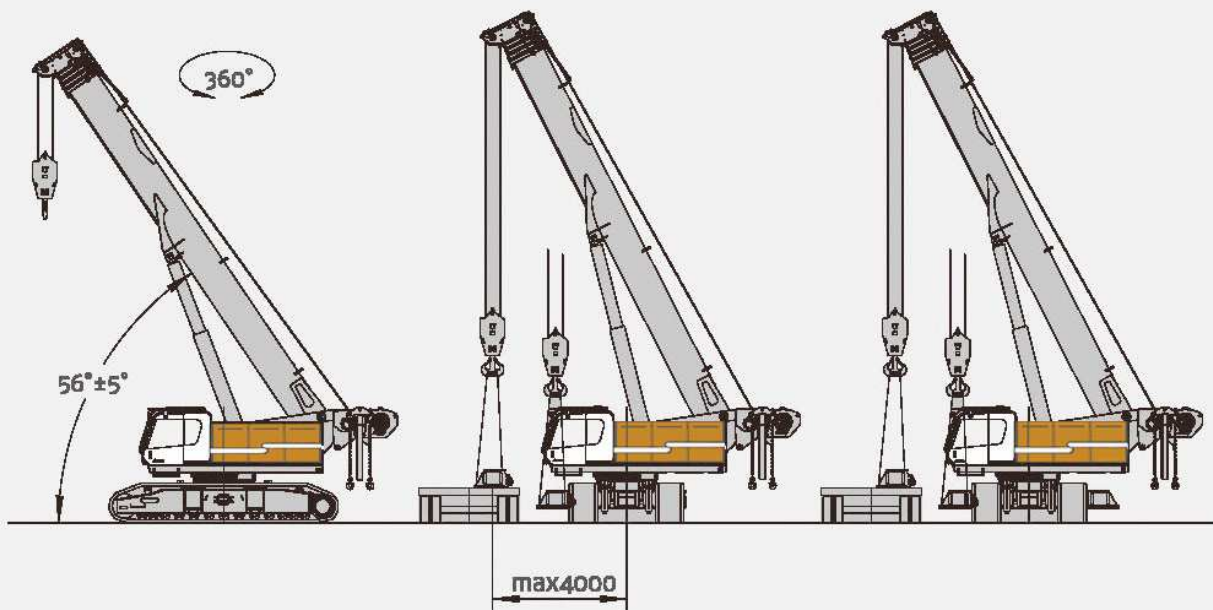
## Transportation Plan B

Width: 3500mm

Weight: 70t



## Extended Frame Assembly





# PV-E CRANE

**PV-E Crane B.V.**

Everdenberg 17

4902 TT Oosterhout

The Netherlands

+31 (0)184 - 425 949

[www.pv-ecrane.com](http://www.pv-ecrane.com)

[info@pvecrane.com](mailto:info@pvecrane.com)

## THE NEW STANDARD IN ELECTRIC CRAWLER CRANES



*Courtesy of CraneMarket.com*