

# TOPKIT MC 180

LJA 1

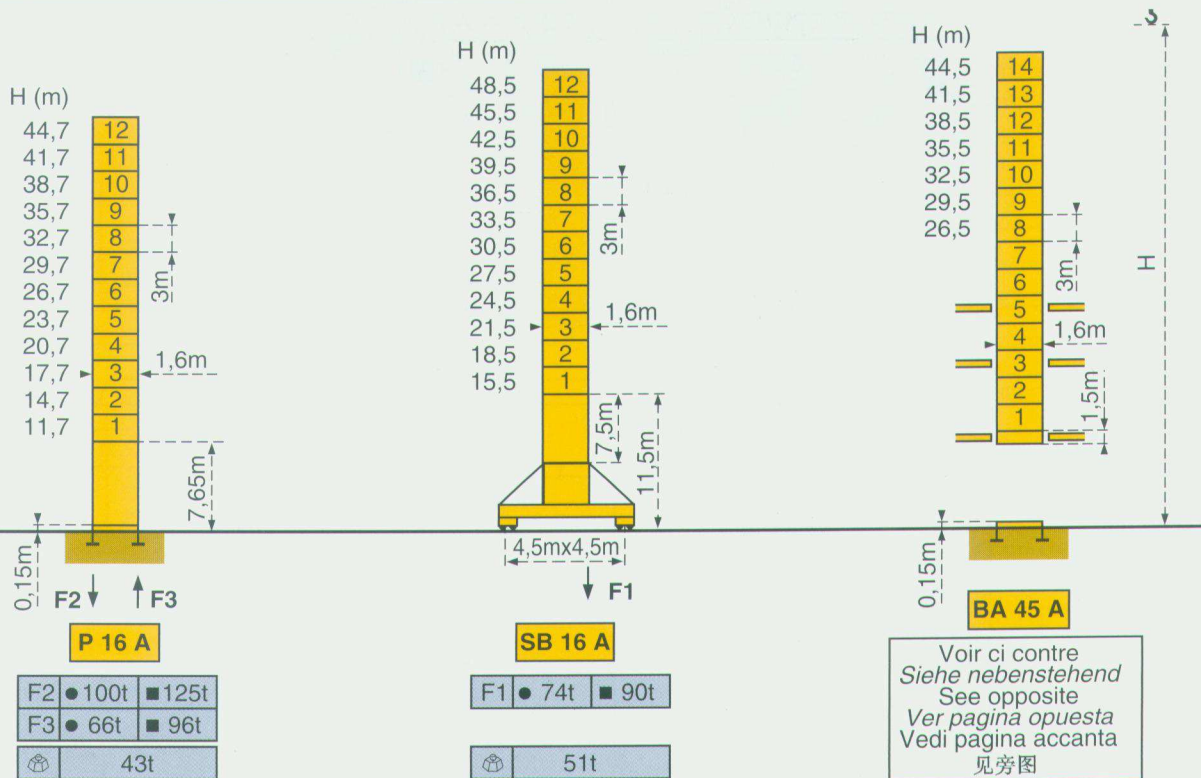


Mats - Maste - Masts  
Mástil - Torre - 塔身



□ 1,6m

Fèche - Ausleger - Jib  
Flecha - Braccio - 起重臂  
40m → 55m

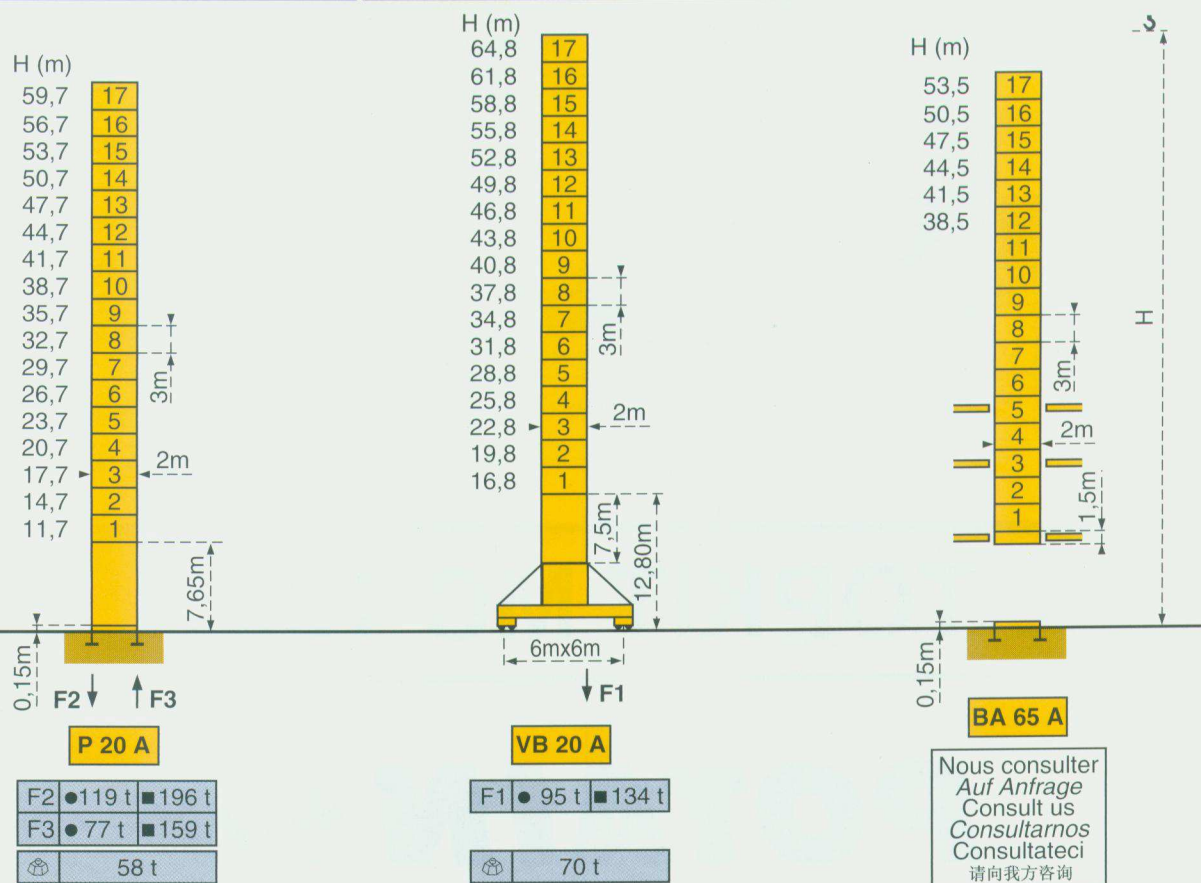


Mats - Maste - Masts  
Mástil - Torre - 塔身



□ 2m

Fèche - Ausleger - Jib  
Flecha - Braccio - 起重臂  
40m → 60m



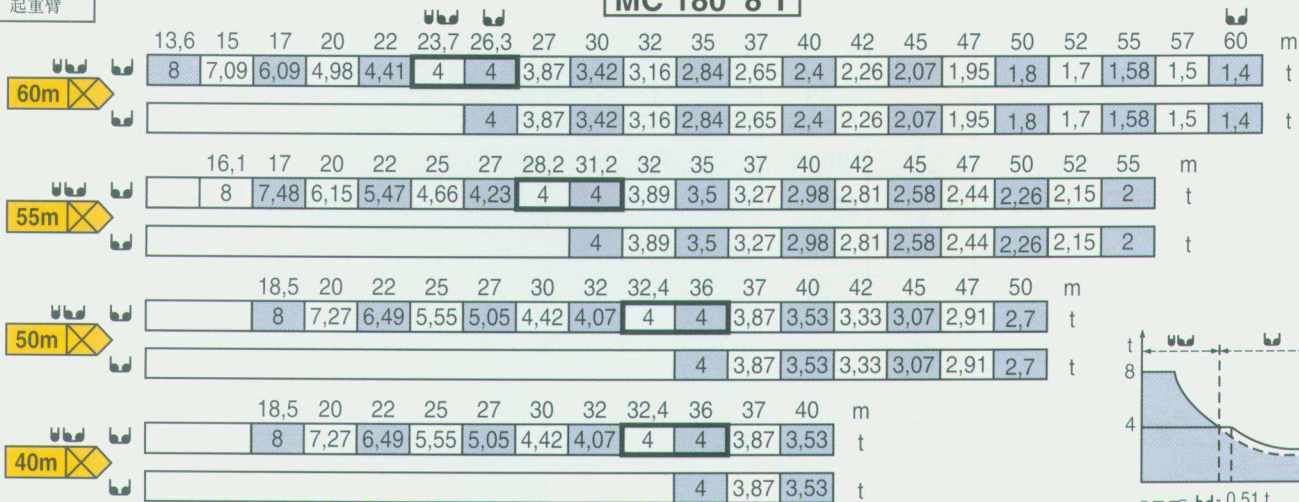
F = Réactions - Eckdrücke - Reactions - Reacciones - Reazioni - 反力



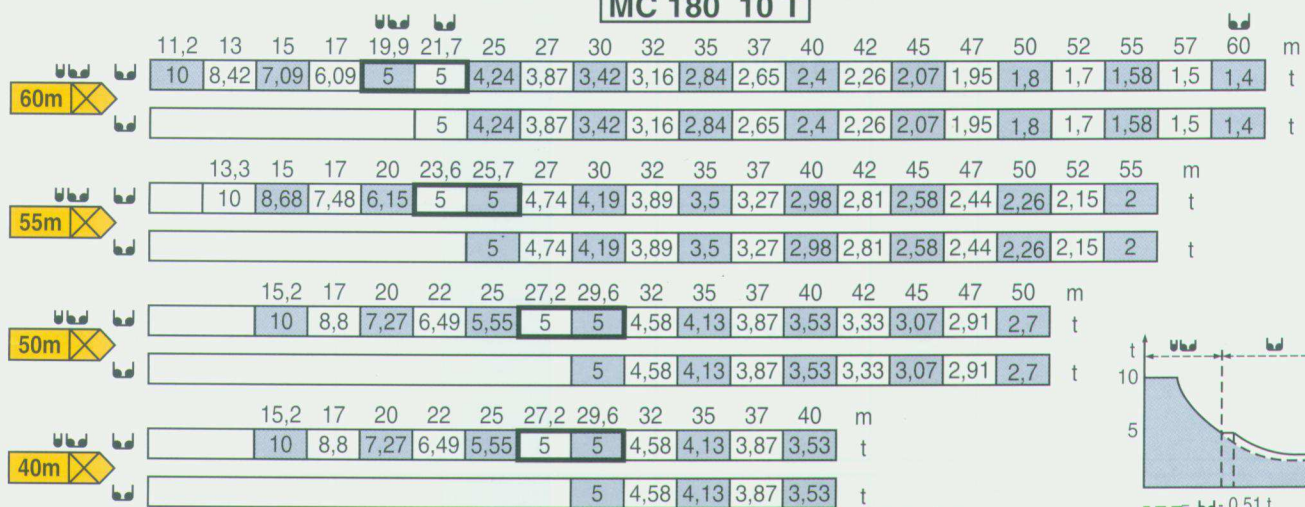
Flèche  
Ausleger  
Jib  
Flecha  
Braccio  
起重臂

## Courbes de charges - Lastkurven - Load diagrams Curvas de cargas - Curve di carico - 负荷曲线

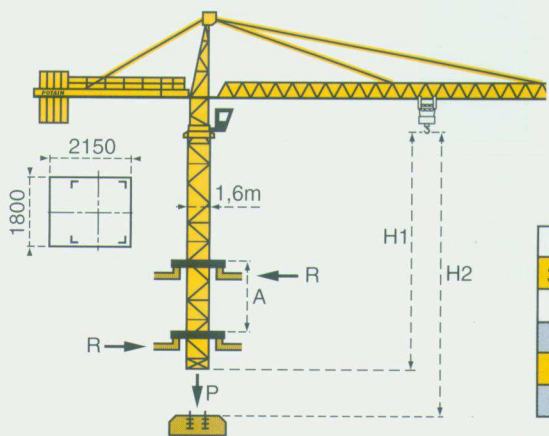
### MC 180 8 T



### MC 180 10 T

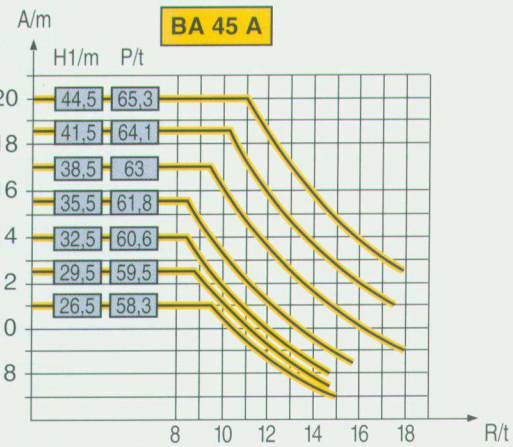


## Télescopage sur dalles - Kletterkrane im Gebäude - Climbing crane Telescopage gruas trepadoras - Gru in cavedio - 楼板上顶升



Mât de 2m : nous consulter  
Mast von 2m : Auf Anfrage  
2 m mast : consult us  
Mástil de 2m : consultarnos  
Torre 2m : consultateci  
2米标准节: 请向我方咨询

H2			
33 PC 20 -1	55 RCS 20D		
90m	180m	141m	283m
33 PC 25	55 RCS 25/13		
90m	180m	140m	280m


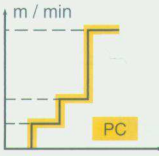
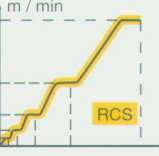

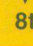


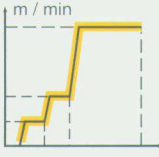

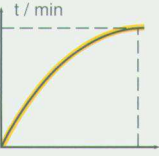




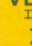


A Distance entre cadres	A Abstand zwischen den Rahmen	A Distance between collars	A Distancia entre marcos	A Distanza fra i telai
H1 Hauteur grue	H1 Kranhöhe	H1 Crane height	H1 Altura grúa	H1 Altezza gru
P Poids de la grue (en service)	P Krangewicht (in Betrieb)	P Crane weight (in service)	P Peso de la grúa (en servicio)	P Peso della gru (in servizio)
R Réaction horizontale	R Horizontalkräfte	R Horizontal reaction	R Reaccion horizontal	R Reazione orizzontale
A 各附着框之间距离	A 各附着框之间距离	P 工作状态下塔机重量	P 工作状态下塔机重量	R 水平反力
H1 工作状态下塔机高度	H1 工作状态下塔机高度	R 水平反力	R 水平反力	

- En service
- In Betrieb
- In service
- En servicio
- In servizio
- 工作状态
- Hors service
- Ausser Betrieb
- Out of service
- Fuera de servicio
- Fuori servizio
- 非工作状态
- ⊗ A vide sans lest avec flèche et hauteur maximum.
- ⊗ Ohne Last und Ballast mit Maximalausleger und Maximalhöhe.
- ⊗ Without load and ballast with longest jib and maximum height.
- ⊗ Sin carga, sin lastre con flecha y altura máxima.
- ⊗ A vuoto senza zavorra e con braccio massimo e altezza massima.
- ⊗ 空载, 无配重, 起重臂和高度均为最大值



Mécanismes - Antriebe - Mechanisms - Mecanismos - Meccanismi - 机构

			m/min	t	m/min	t		ch -PS hp	kW	
<b>Levage</b> <b>Heben</b> <b>Hoisting</b> <b>Elevación</b> <b>Sollevamento</b> 起升	 	  8t					360m >360m*	33	24	
			33 PC	4,6	4	2,3				8
			20 - 1	28	4	14				8
				56	2	28				4
			55 RCS	0→52	4	0→26				8
			20D	0→104	2	0→52				4
33 PC	4,6	5	2,3	10						
	23	5	11,5	10						
25	46	2,5	23	5						
55 RCS	0→42	5	0→21	10						
25/13	0→84	2,6	0→42	5,2						
566m >566m*							55	40,5		
<b>Distribution</b> <b>Katzfahren</b> <b>Trolleying</b> <b>Distribución</b> <b>Ditribuzione</b> 变幅			5 D3 V4 - 1		15-30-58			5	3,7	
<b>Orientation</b> <b>Schwenken</b> <b>Slewing</b> <b>Orientación</b> <b>Rotazione</b> 回转			RCV 145		0→0,8 tr/min rpm			2x6	2x4,4	
<b>Translation</b> <b>Kranfahren</b> <b>Travelling</b> <b>Traslación</b> <b>Traslazione</b> 行走	 1,6 m	 SB 16A R ≥ 10m	RT 324		12,5 - 25		2x7	2x5,2		
			TCV 449 ARC H ≤ 35,2m		10 - 50		4x6,8	4x5		
	 2 m	 VB 20A R ≥ 13m	RT 544 A1 2V		13,5 - 27		4x7	4x5,2		
			TCV 649 ARC H ≤ 43,4m		10 - 50		4x6,8	4x5		
Réseau - Netzstrom - Mains supply - Red - Rete elettrica - 电网							CEI 38 IEC 38	400V(+6%-10%) 50 Hz		
Puissance électrique nécessaire - Anschlusswert - Necessary electric power Potencia eléctrica necesaria - Potenza elettrica necessaria - 所需功率								33 PC : 50 KVA 55 RCS : 80 KVA		
Groupe électrogène - Stromaggregat - Generator set - Grupo electrogeno - Gruppo elettrogeno - 发电机组								*		

\*Nous consulter - Auf Anfrage - Consult us - Consultarnos - Consultateci - 请向我方咨询

Conforme aux directives CEE 84/534 et 87/405 sur le niveau acoustique - Gemäss EWG-Richtlinien 84/534 und 87/405 für den Schall- Leistungspegel  
 In compliance with the EEC 84/534 and 87/405 Instructions on noise level - Conforme con las directivas CEE 84/534 y 87/405 sobre el nivel acustico  
 Conforme alle direttive CEE 84/534 e 87/405 sul livello acustico - 符合 CEE 84/534 - CEE 87/405 声响应规定



Copyright.Reproduction interdite © POTAIN 1995

**POTAIN** 

GRUPE LEGRIS INDUSTRIES

18.Rue de Charbonnières, B.P. 173-F 69132 ECULLY Cedex  
 Tél. (33)04.72.20.20.20 - Fax (33)04.72.20.20.00  
 http://www.potain.fr - E-mail : mkt@potain.fr

POTAIN GmbH Deutschland Tel : 06.105.704.0  
 SIMMAPOTAIN Italia Tel : 039.65.631  
 Zhangjiagang POTAIN China Tel : 520.877.1451

TOPKIT MC 180

Réf. 1995.24 LJA 2

Courtesy of Crane.Market

修改权在我方

Modifiche riservate

Modificaciones reservadas

Subject to modification

Änderungen vorbehalten

Modifications réservées

Printed in France

Réalisation SODIPE