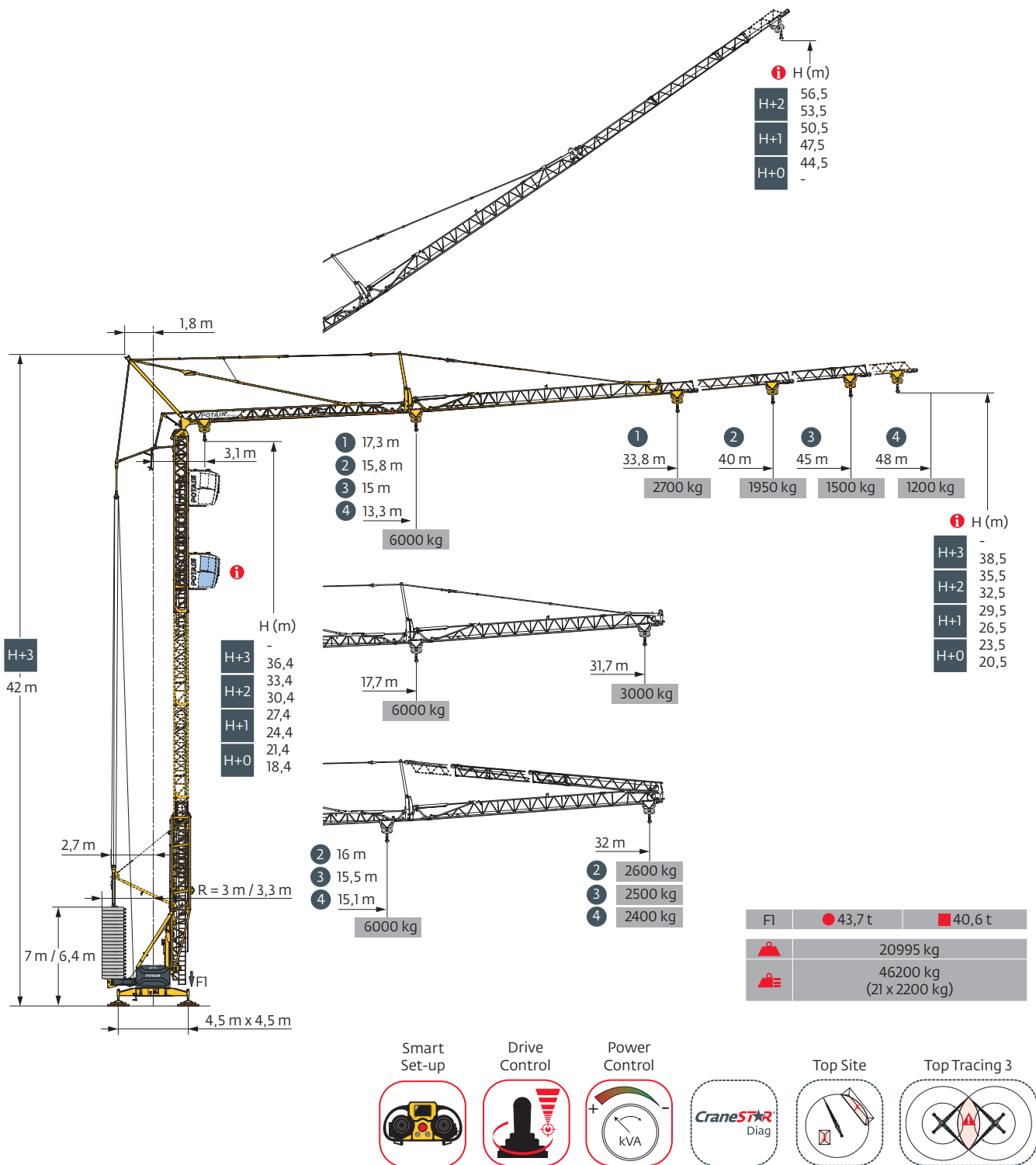
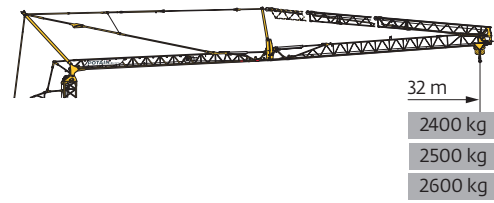
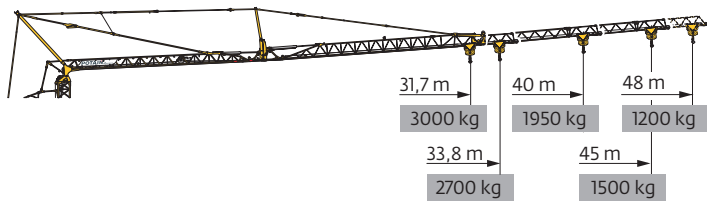


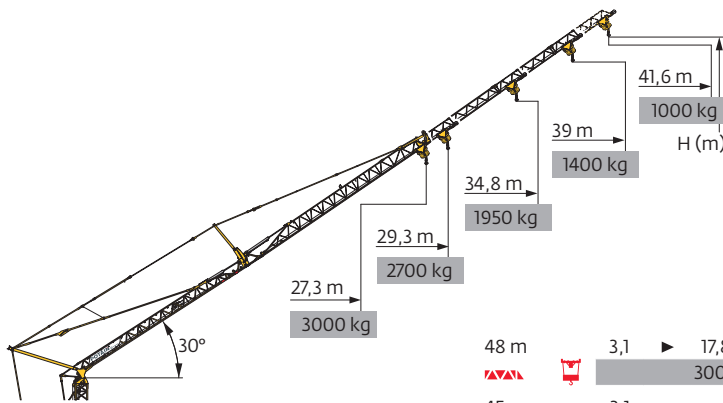
Igo T 99



Courbes de charges / Lastkurven / Load curves / Curvas de cargas / Curve di carico
Curvas de carga / Кривые нагрузок

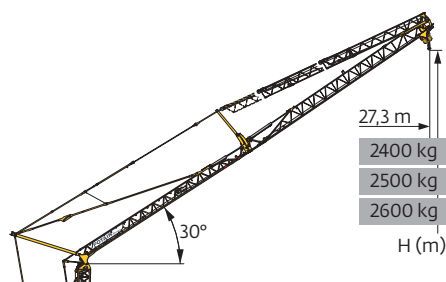


48 m	3,1	▶	13,3	14	16	18	20	22	24	26	28	30	32	34	36	38	40	42	44	46	48	m
▲▲▲▲	▲		6000	5600	4800	4100	3600	3200	2900	2650	2400	2200	2050	1900	1750	1650	1550	1450	1350	1250	1200	kg
45 m	3,1	▶	15	16	18	20	22	24	26	28	30	32	34	36	38	40	42	44	45			m
▲▲▲▲	▲		6000	5500	4800	4200	3700	3300	3000	2750	2500	2300	2150	2000	1850	1750	1650	1550	1500			kg
40 m	3,1	▶	15,8	16	18	20	22	24	26	28	30	32	34	36	38	40						m
▲▲▲▲	▲		6000	5900	5100	4500	4000	3600	3300	3000	2800	2550	2400	2200	2100	1950						kg
33,8 m	3,1	▶	17,3	18	20	22	24	26	28	30	32	33,8										m
▲▲▲▲	▲		6000	5700	5100	4500	4100	3700	3400	3100	2900	2700										kg
31,7 m	3,1	▶	17,7	18	20	22	24	26	28	30	31,7											m
▲▲▲▲	▲		6000	5900	5200	4600	4200	3800	3500	3200	3000											kg
48 m	3,1	▶	15,1	16	18	20	22	24	26	28	30	32										m
▲▲▲▲	▲		6000	5600	4800	4200	3800	3400	3100	2850	2600	2400										kg
45 m	3,1	▶	15,5	16	18	20	22	24	26	28	30	32										m
▲▲▲▲	▲		6000	5800	5000	4400	3900	3500	3200	2950	2700	2500										kg
40 m	3,1	▶	16	18	20	22	24	26	28	30	32											m
▲▲▲▲	▲		6000	5200	4600	4100	3700	3300	3100	2800	2600											kg



▲▲▲▲		48 m	45 m	40 m	33,8 m	31,7 m
H (m)	H+2	56,5	55	52,5	-	-
		53,5	52	49,5	-	-
	H+1	50,5	49	46,5	43,4	42,2
		47,5	46	43,5	40,4	39,2
H+0	44,5	43	40,5	37,4	36,2	
		-	-	-	-	-




48 m	3,1	▶	17,8	20	22	24	26	28	30	32	34	36	38	40	41,6	m
▲▲▲▲	▲		3000	2600	2300	2050	1850	1700	1550	1450	1300	1200	1150	1050	1000	kg
45 m	3,1	▶	21,2	22	24	26	28	30	32	34	36	38	39			m
▲▲▲▲	▲		3000	2850	2600	2350	2150	1950	1800	1650	1550	1450	1400			kg
40 m	3,1	▶	24,5	26	28	30	32	34,8								m
▲▲▲▲	▲		3000	2800	2550	2350	2150	1950								kg
33,8 m	3,1	▶	27	28	29,3											m
▲▲▲▲	▲		3000	2850	2700											kg
31,7 m	3,1	▶	27,3													m
▲▲▲▲	▲		3000													kg



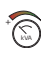




48 m	3,1	▶	22,7	24	26	27,3	m
▲▲▲▲	▲		3000	2800	2550	2400	kg
45 m	3,1	▶	23,5	24	26	27,3	m
▲▲▲▲	▲		3000	2900	2650	2500	kg
40 m	3,1	▶	24,3	26	27,3	m	
▲▲▲▲	▲		3000	2750	2600	kg	

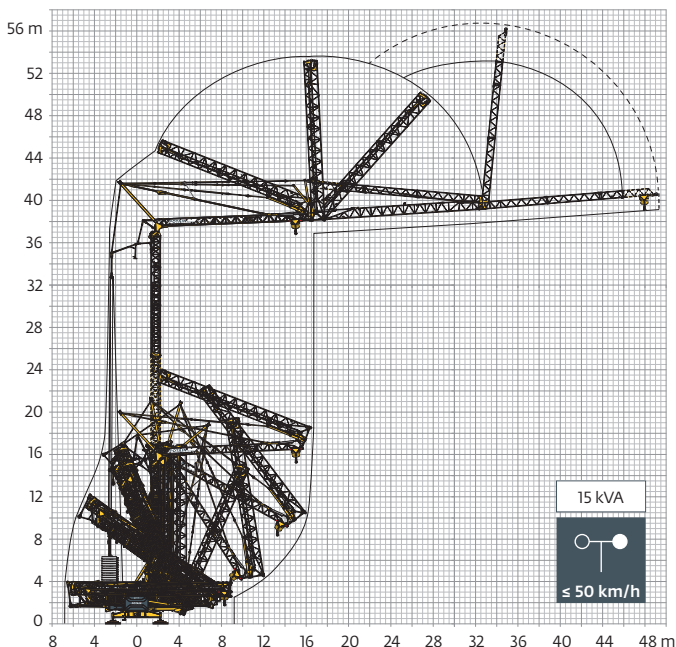
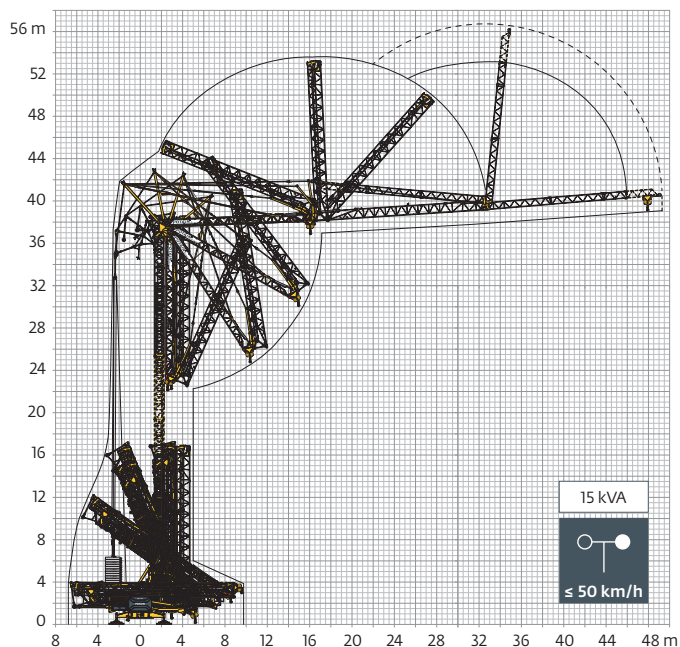
▲▲▲▲		48 m	45 m	40 m
H (m)	H+1		42,2	
			39,2	
	H+0		36,2	
		-		

Mécanismes / Triebwerke / Mechanisms / Mecanismos / Meccanismi
 Mecanismos / Механизмы

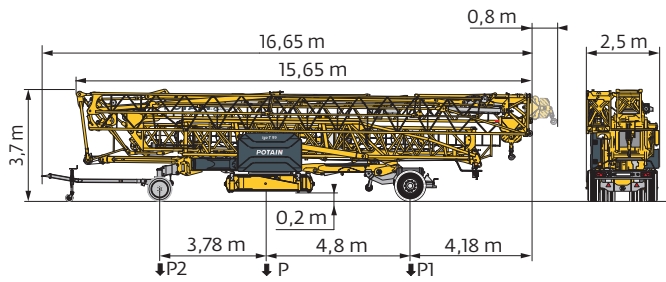
400 V - 50 Hz 480 V - 60 Hz							ch - PS hp	kW	
	25 HPL™ 15	m/min	2,1	16	30	46	54	25	19
		kg	6000	6000	3000	1500	1200		
	5 DVF 5 Optima	m/min	14,7	39	55	70		5,5	4
		kg	6000	6000	2000	200			
	HPS 152	tr/min U/min rpm	0 → 0,8					2 x 5,5	2 x 4

 IEC 60204-32	 kVA	
400 V (+10% -10%) 50 Hz / 480 V (+6% -10%) 60 Hz	 29 → 21 kVA  34 → 24 kVA	

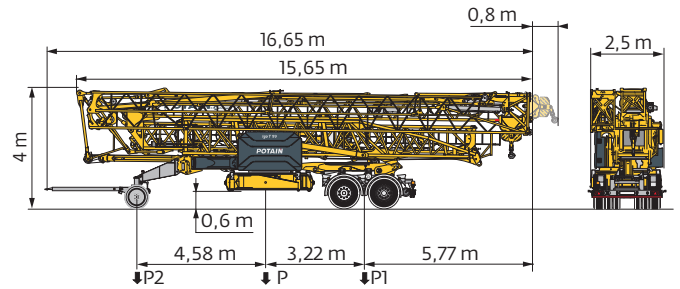
Montage / Montage / Erection / Montaje / Montaggio
 Montagem / Монтаж



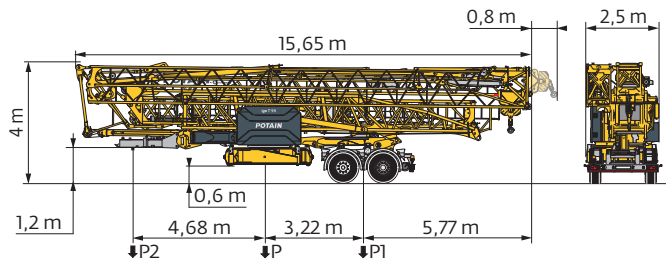
Transport / Transport / Transport / Transporte / Trasporto
Transporte / Транспортировка



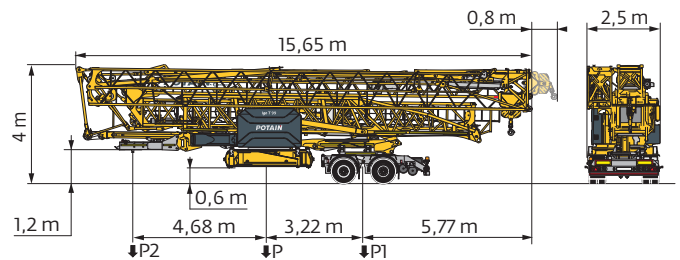
	km/h	P (kg)	P1 (kg)	P2 (kg)
DJ126M/S125	25	22985	12000	10985



	km/h	P (kg)	P1 (kg)	P2 (kg)
DJ126M/S215M	25	24625	16825	7800



	km/h	P (kg)	P1 (kg)	P2 (kg)
SL121/S215M	25	24025	16910	7115



	km/h	P (kg)	P1 (kg)	P2 (kg)
SL122/J215M (EBS)	80	23945	16810	7135

→ J215M: RCE e2*2007/46*0493*02 - WVTA e2*2007/46*0493*02

FR

DE

EN

ES

IT

PT

RU

	Rayon de giration	Schwenk radius	Rear slewing radius	Radio de giro	Raggio di rotazione	Raio de rotação	Задний габарит
	Nous consulter	Auf Anfrage	Consult us	Consultarnos	Consultateci	Consultar-nos	Проконсультируйтесь у нас
	Réactions en service	Reaktionskräfte in Betrieb	Reactions in service	Reacciones en servicio	Reazioni in servizio	Reacções em serviço	Реакция при работе
	Réactions hors service	Reaktionskräfte außer Betrieb	Reactions out of service	Reacciones fuera de servicio	Reazioni fuori servizio	Reacções fora de serviço	Реакция в покое
	Poids à vide, sans lest, sans trains de transport, avec flèche maxi. et hauteur standard.	Gewicht ohne Last, ohne Ballast, ohne Transportachsen mit max. Auslager und Standardhöhe	Weight without load, without ballast, without transport axes, with max. jib and standard height	Peso en vacío, sin lastre, sin trenes de transporte con flecha y altura estándar	Peso a vuoto, senza lastre, senza assali di trasporto, con braccio max e altezza standard.	Peso em vazio, sem lastro, sem eixos de transporte com lança máxima e altura standard.	Вес без груза, без балласта, без осей для транспортировки, с максимальным вылетом стрелы и стандартной высотой
	Poids total du lest	Ballast-Gesamtgewicht	Total ballast weight	Peso total del lastre	Peso totale della zavorra	Peso total do lastro	Общий вес балласта
	Équipements standards	Standardausrüstungen	Standard equipment	Equipamiento de serie	Equipaggiamento standard	Equipamento de série	Стандартное оборудование
	Équipements optionnels	Sonderausrüstungen	Options	Equipamiento opcional	Equipaggiamento in opzione	Equipamento opcional	Дополнительное оборудование (опция)
	Levage	Heben	Hoisting	Elevación	Sollevamento	Elevação	Подъем
	Distribution	Katzfahren	Trolleying	Distribución	Distribuzione	Distribuição	Перемещение по стреле
	Orientation	Schwenken	Slewing	Orientación	Rotazione	Rotação	Поворот
	Puissance requise	Erforderliche Leistung	Required power	Potencia Necesaria	Potenza richiesta	Potência Necessária	Потребляемая мощность
	Fonction Power Control : vitesses treuils adaptées à la puissance disponible	Funktion Power Control: Geschwindigkeiten der Triebwerke werden an die verfügbare Leistung angepasst	Power Control Function: winch speeds adapted to the available power	Función Power Control: marchas de los cabrestantes adaptadas a la potencia disponible	Funzione Power Control: velocità degli organi adattate alla potenza disponibile	Função Power Control: velocidades de guincho adaptadas à potência disponível	Функция контроля мощности Power Control: регулировка скорости лебедок в зависимости от доступной мощности

	Hauteurs sous crochet données moufle plaquée	Hakenhöhen werden mit plattiertem Haken angegeben	Hook heights given with plated pulley block	Altura bajo gancho con pasteca bloqueada	Altezza sotto gancio con bozzello in contatto con carrello	Altura ao gancho com o cadernal em contacto com o carrinho	высота под крюком дана при условии, что крюковая подвеска соприкасается с кареткой
	Document commercial non contractuel	Unverbindliches Vertriebsdokument	This commercial document is not legally binding	Documento comercial no contractual	Documento commerciale non vincolante	Documento comercial não contratual	Этот коммерческий документ не является юридически обязательным
	Pour toute information technique se référer à la notice correspondante	Für technische Informationen, siehe die entsprechenden Anweisungen	For any technical information, please refer to the corresponding instructions	Para cualquier información técnica, ver la noticia correspondiente	Per tutte le informazioni tecniche fare riferimento al catalogo istruzioni	Para qualquer informação técnica complementar consultar as respectivas instruções	Для получения технической информации, см. соответствующие инструкции

