

# MR 618

**Maximum capacity:** 32 t

**Maximum operating hook radius:** 60 m

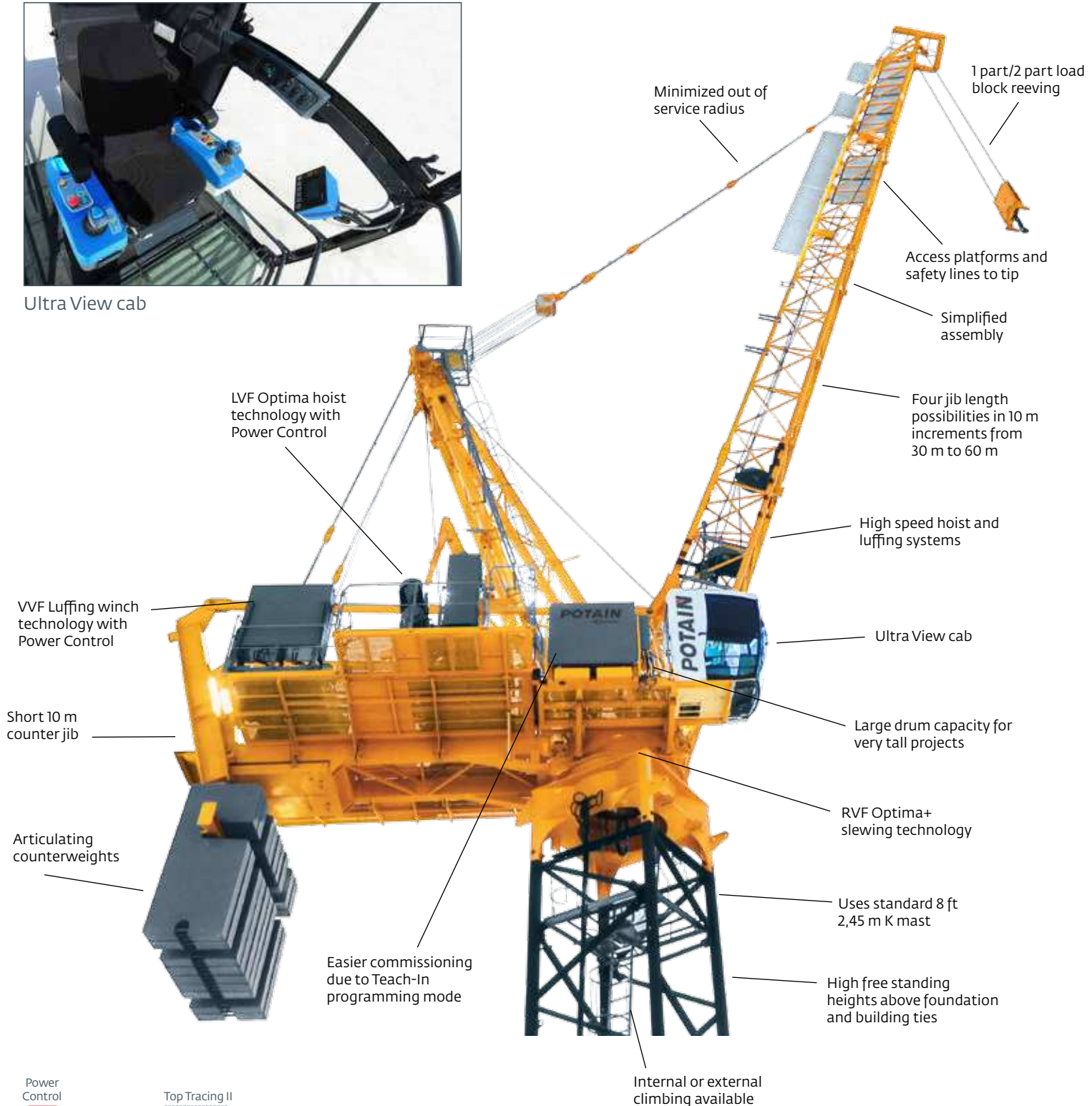
**Maximum capacity at 60 m:** 8,25 t

**Maximum line speed:** 216 m/min

**1 part / 2 part load block reeving**



Ultra View cab



## Benefits

### New mechanisms

- 270 LVF 160 hoist
- 1 part / 2 part load block reeving
- Smooth movements due to frequency control technology
- Extremely accurate and reactive luffing movements through VVF technology
- Very high speed, high capacity hoist winches maximize productivity at very tall working heights
- Ultra View cab provides outstanding visibility with first-rate comfort

### Smart design

- Improved technician access to mechanisms and electrical panels
- Optimized counter jib length, 10 m and articulating counterweight minimize out of service radius
- Standard service derrick allows handling of mechanism components on machinery deck
- Simplified assembly, commissioning and maintenance phases maximize uptime
- One type of counterweight 6 t used with all jib combinations
- Minimized weights for transportation and assembly of components



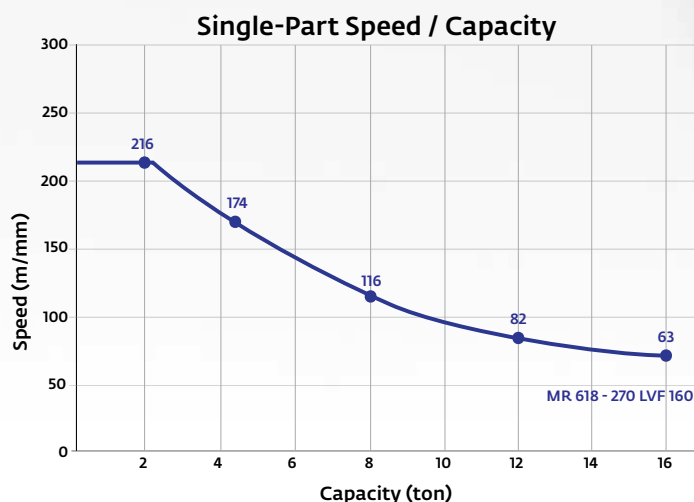
## On-board computer

- Easier commissioning with Teach-In programming mode
- Improved man to machine interface through modern control system
- Simplified maintenance through fault stack readout
- Secured sensors and switches ensure a high level of safety
- Optional Top Tracing II (WADS + crane interface control) that informs the operator of obstructions and obstacles within the working area

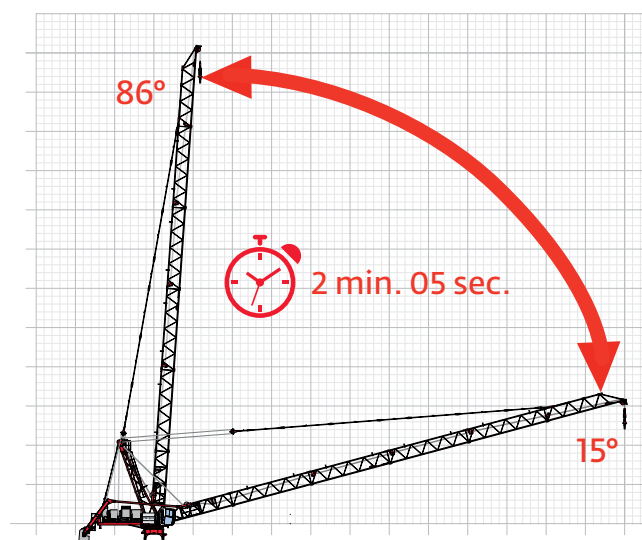
## LVF Optima hoist system



- 270 LVF 160
  - ▶ 216 m/min with 2.0 t
  - ▶ 541 m drum spooling capacity
- Power Control function for reduced electrical demand
- Optimized speed depending on the load
- No gearbox



## VVF luffing system



## RVF Optima+ slewing system

- Slewing speeds up to 1 rpm

