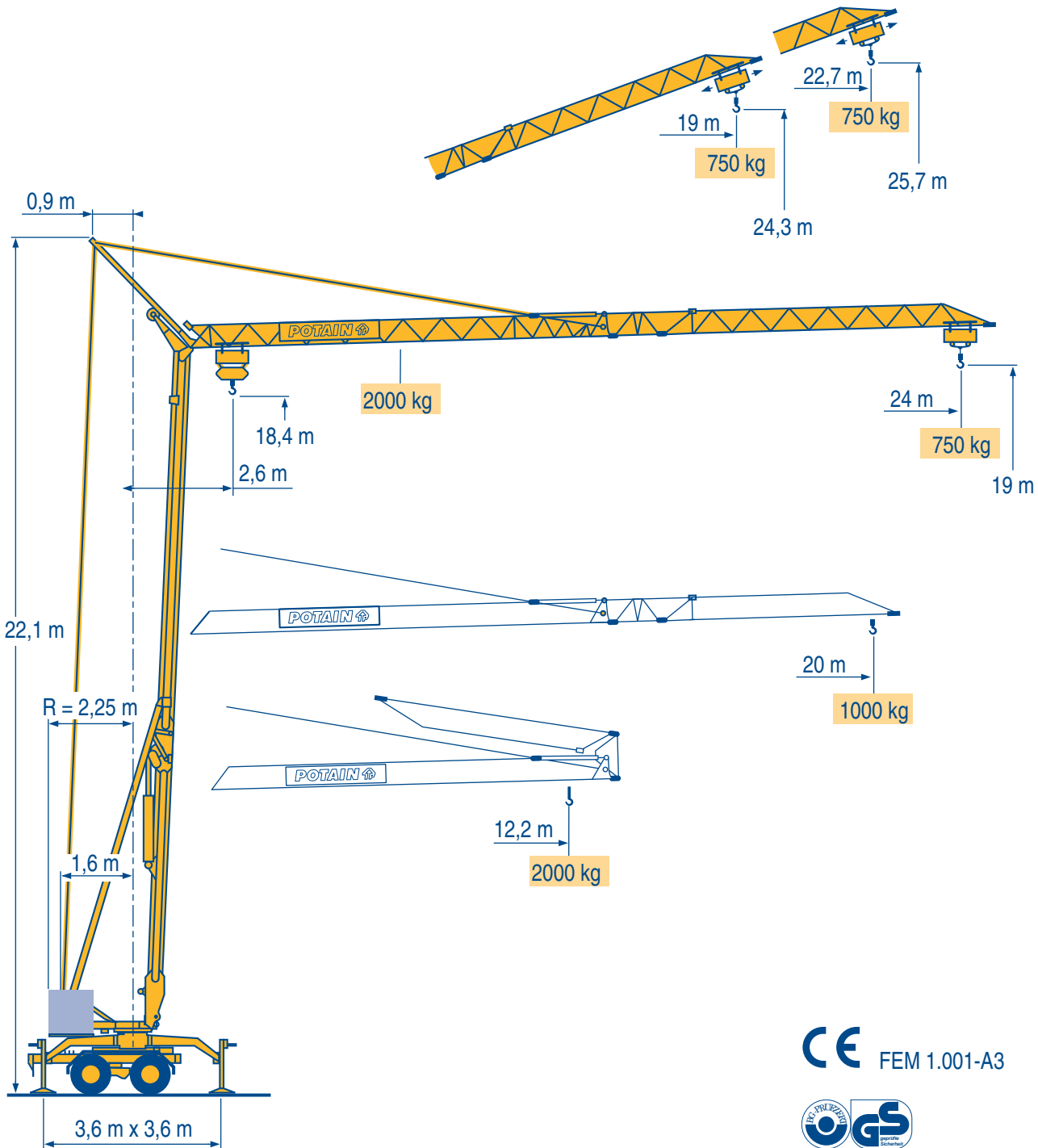


# HDM 20



LTN 2

CE FEM 1.001-A3



- I go  
HD  
HDM
- HDT
- GTMR
- CITY CRANE
- TOPKIT MD  
MAXI MD
- MAXI TOPKIT
- Topless MDT
- MR

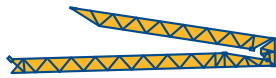
Courbes de charges  
Lastkurven



Load diagrams  
Curvas de cargas



Curve di carico  
负荷曲线



24 m	2,6	▶	12,2	m	11,1	12	13	14	15	16	17	18	19	20	21	22	23	24	m
			2000	kg	2000	1815	1640	1490	1365	1260	1165	1085	1015	950	890	840	795	750	kg
20 m	2,6	▶	12,2	m	11,5	12	13	14	15	16	17	18	19	20					
			2000	kg	2000	1905	1720	1570	1440	1325	1230	1145	1065	1000					

LTN 2

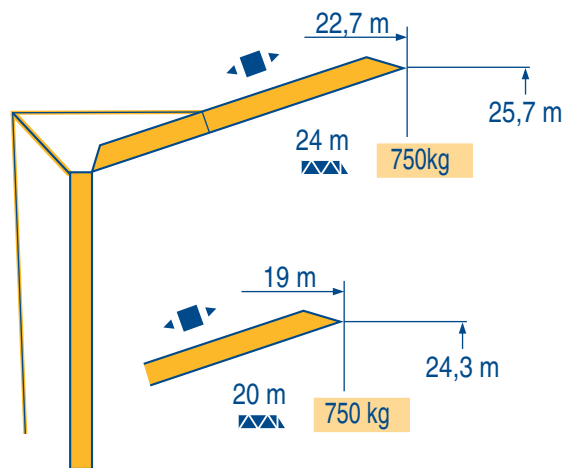
Fèche relevée  
Ausleger in Steilstellung



Luffing jib  
Flecha izada



Braccio impennato  
起升吊臂



LTN 2



Chariot distributeur



Traversing trolley



Carrellino distributore



Verfahrbare laufkatze



Carro distribuidor



变幅小车



HDM 20

POTAIN

Courtesy of Crane.Market

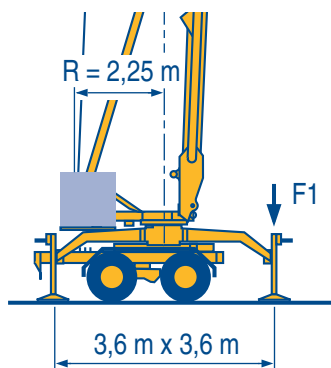
**Réactions**  
**Eckdrücke**



**Reactions**  
**Reacciones**



**Reazioni**  
**反力**



F1 ● 12,6 t ■ 7,5 t

▲ 21,4 t

LTN 1

- Réactions en service
- Réactions hors service
- ▲ A vide avec lest et train de transport avec flèche maximum



- Reactions in service
- Reactions out of service
- ▲ Without load, with ballast and transport axles, with maximum jib.



- Reazioni in servizio
- Reazioni fuori servizio
- ▲ A vuoto, con zavorra con assali di trasporto con braccio massima.



- Reaktionskräfte in Betrieb
- Reaktionskräfte außer Betrieb
- ▲ Ohne Last, mit Ballast mit Transportachse, mit Maximalausleger.



- Reacciones en servicio
- Reacciones fuera de servicio
- ▲ Sin carga, con lastre, y tren de transporte, flecha máxima.



- 工作状态下的反应
- 非工作状态下的反应



**Mécanismes**  
**Antriebe**



**Mechanisms**  
**Mecanismos**



**Meccanismi**  
**机构**



								ch - PS hp	kW
▲	9 PC 10	m/min	6,6	20	40		8,2	6	
		kg	2000	2000	1000				
◀ ▶	2 D2 V4	m/min	18 - 36				2	1,5	
⦿	RVF 30	tr/min U/min rpm	0 → 1				1,5	1,1	
CEI 38		IEC 38	kVA						
400 V(+6% -10%) 50 Hz			9 PC : 12 kVA			84/534 - 87/405			

LTN 2

- ▲ Levage
- ◀ ▶ Distribution
- ⦿ Orientation
- Conforme aux directives CEE 84/534 et 87/405 sur le niveau acoustique



- ▲ Hoisting
- ◀ ▶ Trolleying
- ⦿ Slewing
- In compliance with the EEC 84/534 and 87/405 Instructions on noise level



- ▲ Sollevamento
- ◀ ▶ Diritribuzione
- ⦿ Rotazione
- Conforme alle direttive CEE 84/534 e 87/405 sul livello acustico



- ▲ Heben
- ◀ ▶ Katzfahren
- ⦿ Schwenken
- Gemäss EWG-Richtlinien 84/534 und 87/405 für den Schall-Leistungspegel

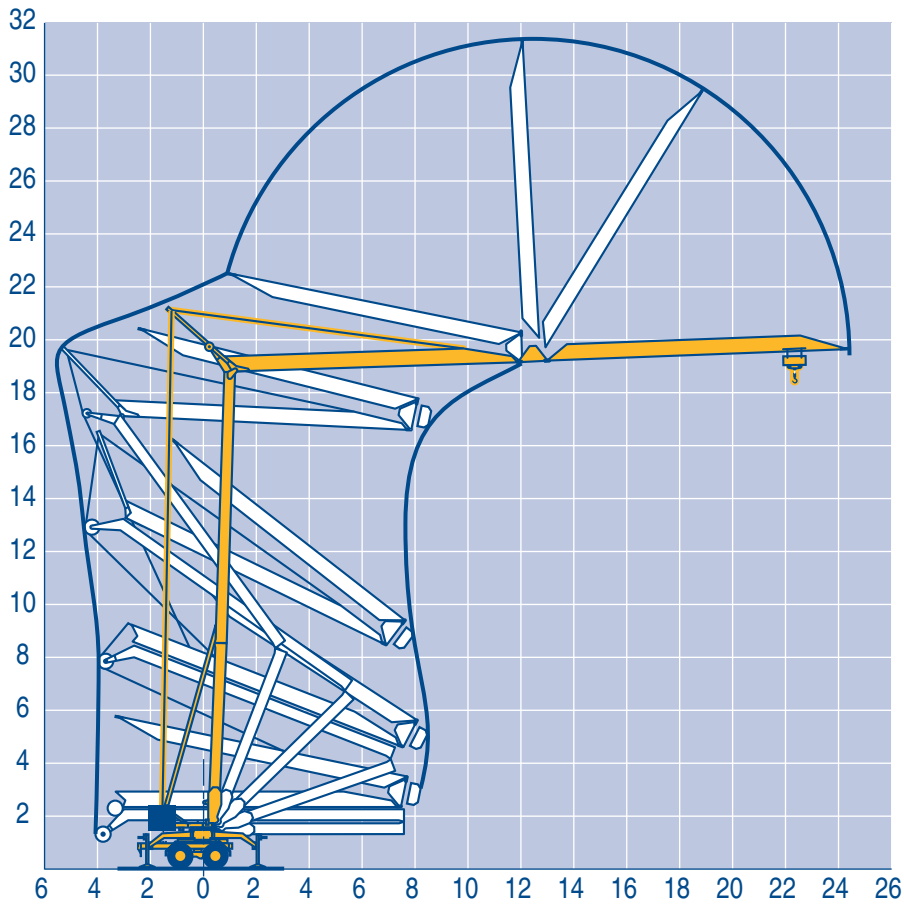


- ▲ Elevación
- ◀ ▶ Distribución
- ⦿ Orientación
- Conforme con las directivas CEE 84/534 y 87/405 sobre el nivel acustico



- ▲ 起升
- ◀ ▶ 变幅
- ⦿ 回转
- 符合 CEE 84/534 - CEE 87/405 声晌度规定





LMN 1

Version semi-portée lestée

F Tractor towed version  
with ballast

GB Versione semi rimorchio  
con zavorra

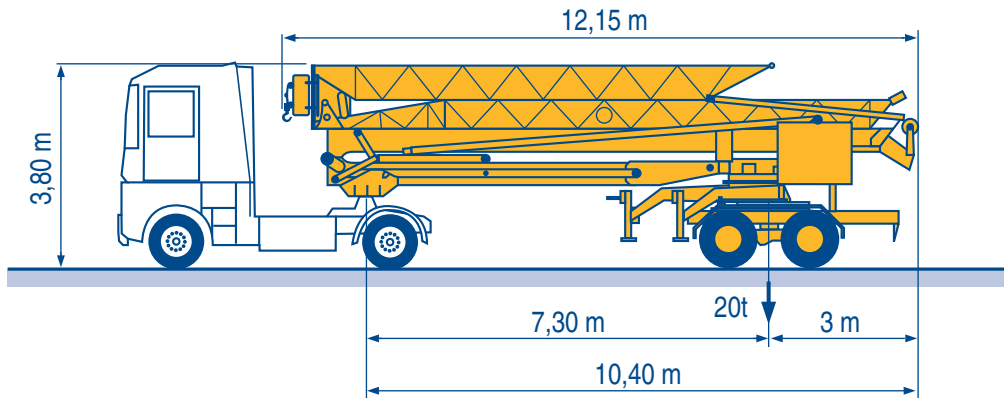
I

Ausführung als Sattelaufleger  
mit ballast

D Version en semi-remorque  
con lastre

E 带压重半拖挂

C



LTN 1

**POTAIN**   
 GROUPE LEGRIS INDUSTRIES

18.Rue de Charbonnières, B.P. 173  
 F-69132 ECULLY Cedex  
 Tél. (33)04.72.18.20.20  
 Fax (33)04.72.18.20.00  
 http://www.potain.com  
 E-mail : mkt@potain.fr

**HDM 20**

Copyright.Reproduction interdite © POTAIN 2000

Deutschland  
 POTAIN GmbH  
 Italia  
 POTAIN S.p.A.  
 Singapore  
 POTAIN PTE LTD

Tel : 06.105.704.0

Tel : 0.331.49.33.11

Tel : (00.65) 227.1550

Réf. 2000.07 LTN 2