

# MR 618

**Maximum capacity:** 35.2 USt (32 t)

**Maximum operating hook radius:** 197 ft (60 m)

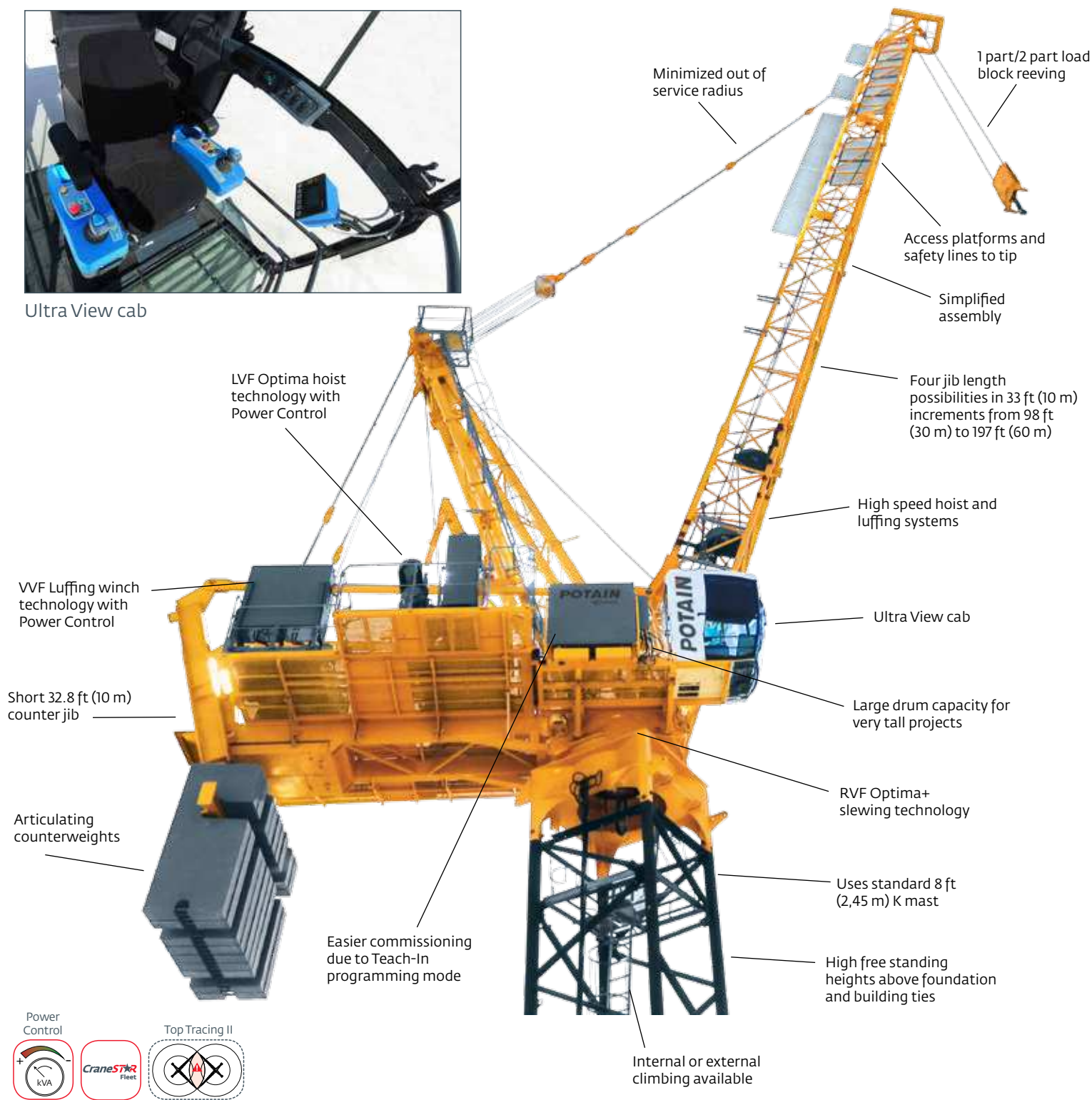
**Maximum capacity at 197 ft (60 m):** 9.1 USt (8,25 t)

**Maximum line speed:** 709 fpm (216 m/min)

**1 part / 2 part load block reeving**



Ultra View cab



## Benefits

### New mechanisms

- 320 LVF 160 hoist
- 1 part / 2 part load block reeving
- Smooth movements due to frequency control technology
- Extremely accurate and reactive luffing movements through VVF technology
- Very high speed, high capacity hoist winches maximize productivity at very tall working heights
- Ultra View cab provides outstanding visibility with first-rate comfort

### Smart design

- Improved technician access to mechanisms and electrical panels
- Optimized counter jib length, 32.8 ft (10 m) and articulating counterweight minimize out of service radius
- Standard service derrick allows handling of mechanism components on machinery deck
- Simplified assembly, commissioning and maintenance phases maximize uptime
- One type of counterweight 6.6 USt (6 t) used with all jib combinations
- Minimized weights for transportation and assembly of components



### On-board computer

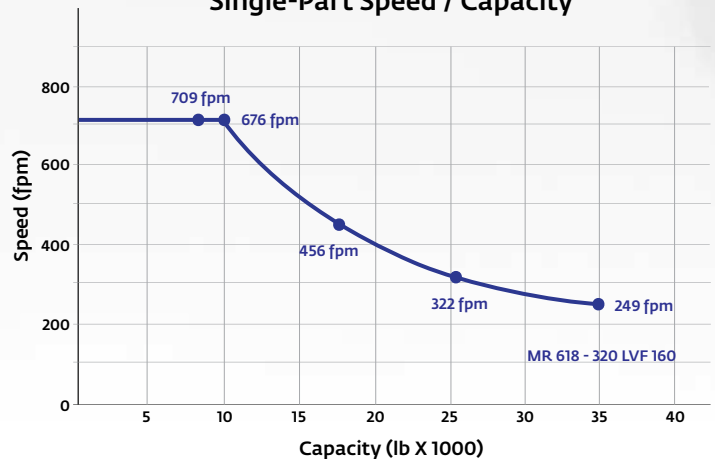
- Easier commissioning with Teach-In programming mode
- Improved man to machine interface through modern control system
- Simplified maintenance through fault stack readout
- Secured sensors and switches ensure a high level of safety
- Optional Top Tracing II (WADS + crane interface control) that informs the operator of obstructions and obstacles within the working area

## LVF Optima hoist system

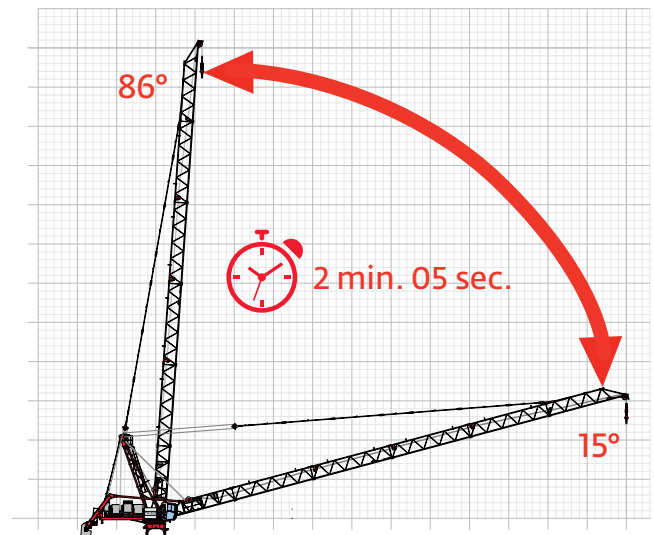


- 320 LVF 160
  - ▶ 709 fpm (216 m/min) with 4409 lb (2.0 t)
  - ▶ 1775 ft (541 m) drum spooling capacity
- Power Control function for reduced electrical demand
- Optimized speed depending on the load
- No gearbox

Single-Part Speed / Capacity



## VVF luffing system



## RVF Optima+ slewing system

- Slewing speeds up to 1 rpm

