

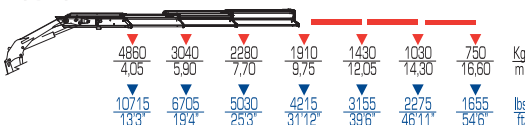
Plus



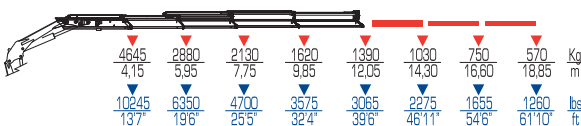
23022 P



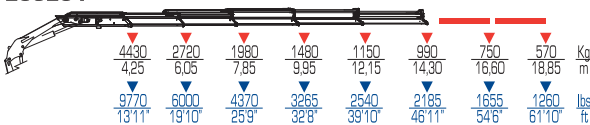
23023 P



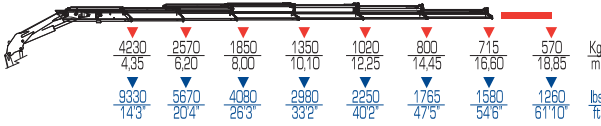
23024 P



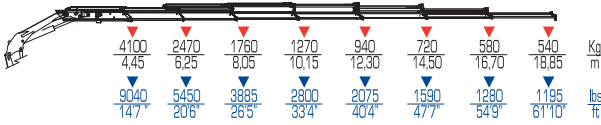
23025 P



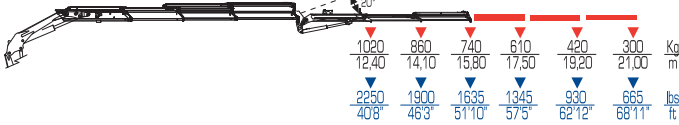
23026 P



23027 P

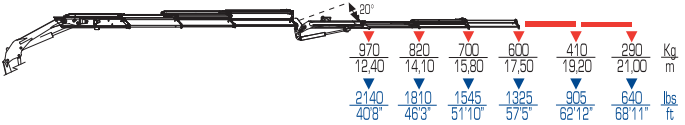


23023 P + J512.20

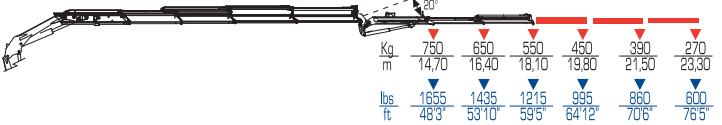


	tm	ft lbs	l/min	gals/min	Mpa	Psi
23022 P	20,5	148420	80	21	30,5	4420
23023 P	19,7	142400	80	21	30,5	4420
23024 P	19,3	142780	80	21	30,5	4420
23025 P	18,8	136100	80	21	30,5	4420
23026 P	18,4	133260	80	21	30,5	4420
23027 P	18,2	132000	80	21	30,5	4420
23023 P + J512.20	-	-	80	21	30,5	4420
23023 P + J513.20	-	-	80	21	30,5	4420
23024 P + J512.20	-	-	80	21	30,5	4420
23024 P + J513.20	-	-	80	21	30,5	4420
23024 P + J514.20	-	-	80	21	30,5	4420

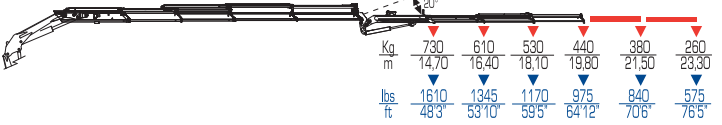
23023 P + J513.20



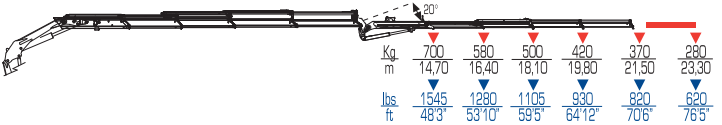
23024 P + J512.20



23024 P + J513.20



23024 P + J514.20



°	kg		kg		ft		ft		ft	
	ST	ST	LC	LC	mm	ft	mm	ft	mm	ft
400	2070	4565	2190	4830	2460	8'1"	2250	7'5"	965	3'1"
400	2205	4865	3225	5130	2460	8'1"	2250	7'5"	965	3'1"
400	2360	5205	2480	5470	2460	8'1"	2250	7'5"	965	3'1"
400	2495	5505	2615	5770	2460	8'1"	2250	7'5"	1025	3'3"
400	2615	5770	2735	6030	2460	8'1"	2250	7'5"	1045	3'4"
400	2710	5975	2855	6295	2460	8'1"	2270	7'5"	1080	3'5"
400	2705	5965	2825	6230	2500	8'2"	2505	8'2"	1250	4'10"
400	2760	6085	2880	6350	2500	8'2"	2505	8'2"	1250	4'10"
400	2875	6340	2995	6605	2500	8'2"	2520	8'3"	1250	4'10"
400	2930	6460	3050	6725	2500	8'2"	2520	8'3"	1250	4'10"
400	2980	6570	3100	6835	2500	8'2"	2520	8'3"	1250	4'10"