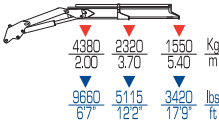
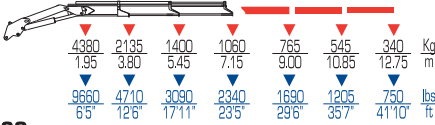




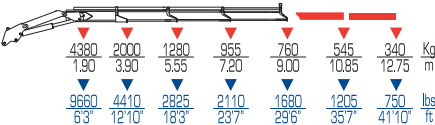
9021



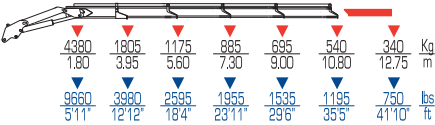
9022



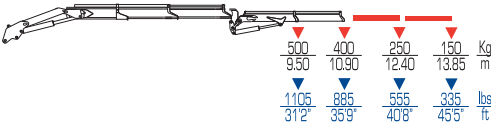
9023



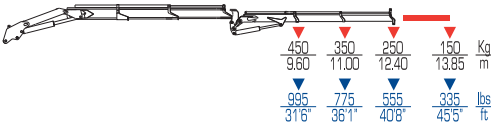
9024



9022+J11



9022+J12



	cm	ft lbs	l/min	gals/min	Mpa	Psi	°	ST	ST	LC	LC	mm	ft	mm	ft	mm	ft	
9021	8.8	63360	30	8	26.5	3840	400	1054	2325	-	-	2390	9'10"	1985	6'6"	680	2'3"	
9022	8.5	61780	30	8	26.5	3840	400	1138	2510	1188	2620	2390	9'10"	1985	6'6"	680	2'3"	
9023	8.3	60190	30	8	26.5	3840	400	1192	2630	1252	2760	2390	9'10"	1985	6'6"	680	2'3"	
9024	7.9	57030	30	8	26.5	3840	400	1256	2770	-	-	2390	9'10"	1985	6'6"	680	2'3"	
9022+J11	-	-	30	8	26.5	3840		1365	3010	-	-	2350	7'10"	1985	6'6"	830	2'3"	
9022+J12	-	-	30	8	26.5	3840		1404	3095	-	-	2350	7'10"	1985	6'6"	830	2'3"	