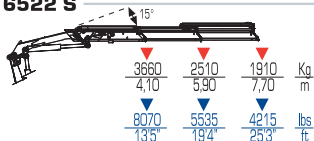
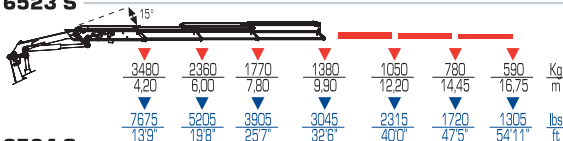




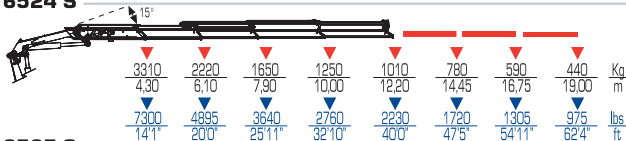
16522 S



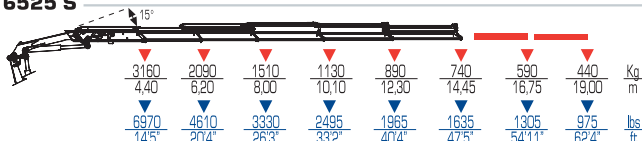
16523 S



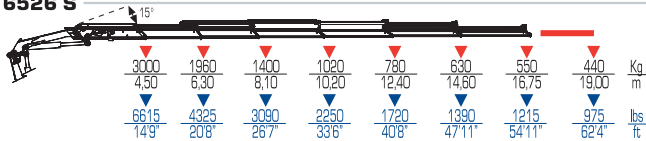
16524 S



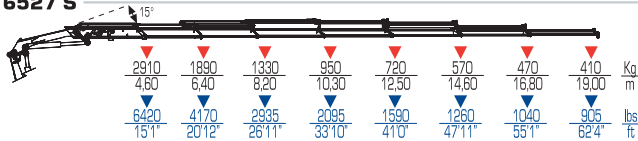
16525 S



16526 S












16527 S



	tm	ft lbs	l/min	gals/min	Mpa	Psi
16522 S	15	108540	40	11	29,5	4280
16523 S	14,6	105720	40	11	29,5	4280
16524 S	14,2	102950	40	11	29,5	4280
16525 S	13,9	100570	40	11	29,5	4280
16526 S	13,5	97650	40	11	29,5	4280
16527 S	13,4	96820	40	11	29,5	4280



																	
		ST	ST	LC	LC	mm	ft	mm	ft	mm	ft	mm	ft				
400		1935	4270	2055	4530	2455	8'0"	2250	7'4"	965	3'2"						
400		2075	4575	2195	4840	2455	8'0"	2250	7'4"	965	3'2"						
400		2200	4855	2320	5115	2455	8'0"	2250	7'5"	965	3'2"						
400		2325	5130	2445	5395	2455	8'0"	2305	7'6"	1025	3'4"						
400		2435	5370	2555	5635	2455	8'0"	2365	7'8"	1045	3'4"						
400		2530	5580	2650	5845	2455	8'0"	2405	7'9"	1085	3'5"						