

[45 SP]^{PM}

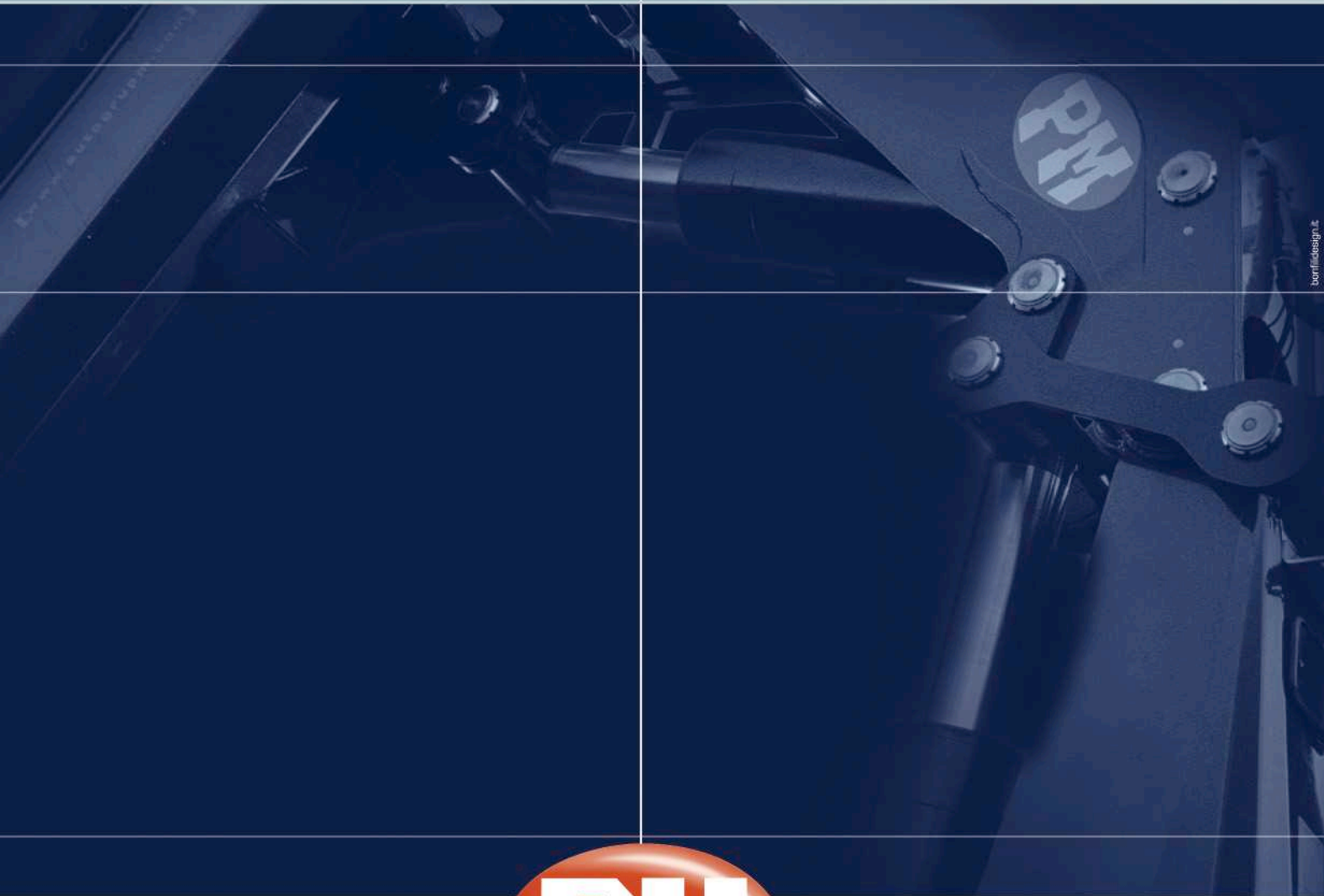
[45 SP]^{PM}

[it] [en]

SILVER

[it] [en]

SILVER



[elevate to the highest power]^{PM}



Via Giuseppe Verdi 22
41018 San Cesario sul Panaro
MO - Italy

ph. +39 059 936811
fax +39 059 936804
info@pm-group.eu
www.pm-group.eu

Cod. 834.896 ED. 07



[elevate to the highest power]^{PM}



POTENTE ED AFFIDABILE PER OGNI IMPIEGO - POWERFUL AND RELIABLE FOR EVERY USE

Optional

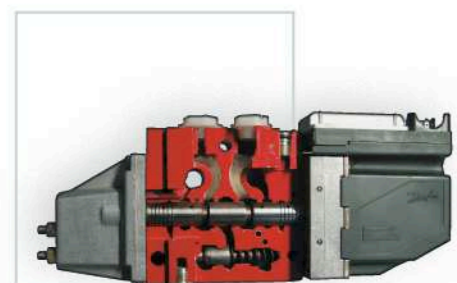
- Radiocomando multifunzione di serie Scanreco/Hetronic.
- Scanreco/Hetronic multifunction radio remote control.



**SISTEMA DI VERNICIATURA DI QUALITÀ CERTIFICATA
CERTIFIED PAINTING QUALITY SYSTEM**



**DICHIARAZIONE DI CONFORMITÀ DEL PRODUTTORE
DECLARATION OF CONFORMITY OF THE MANUFACTURER**



- Distributore proporzionale DANFOSS.
- DANFOSS proportional hydraulic control valve block.



- Scambiatore di calore
- Heat exchanger



- Verricello idraulico da 800 kg su antenna, fino a 1500 su gru.
- Hydraulic winches with a capacity ranging from 800 kg on jibs, up to 1500 kg on crane.

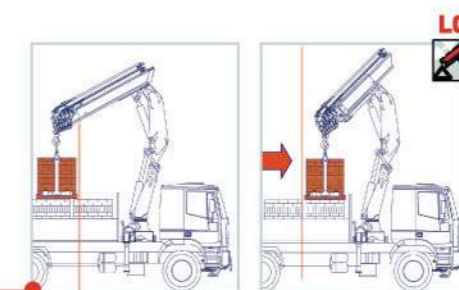


- Attivazioni alimentate con avvolgitubi
- Activations powered by means of hose winder.



**3 ANNI DI GARANZIA SULLE PARTI STRUTTURALI
3 YEARS OF WARRANTY ON THE STRUCTURAL PARTS**

- DOPPIE BIELLE SUGLI SNODI PER MOVIMENTI COSTANTI E DI PRECISIONE.
- DOUBLE CONNECTING RODS ON THE POINTS OF ARTICULATION TO ENSURE CONSTANT AND ACCURATE MOVEMENTS.



- DISPONIBILE FINO A 8 ESTENSIONI IDRAULICHE con dispositivo di uscita sfilo sequenziale garantita per massima velocità e tutela dell'integrità del braccio stesso.
- UP TO 8 HYDRAULIC EXTENSIONS AVAILABLE with sequential extension exit device guaranteed for maximum speed and protection of integrity of the boom itself.

- Gru PM, versione LC, con primo braccio retraibile idraulicamente, agevola le movimentazioni ingombranti e gravose a corto raggio, ottimizzando anche le posizioni di carico sotto colonna.
- PM crane in LC version, with first hydraulic retractable boom, optimizes the load positioning close to the column, and makes easy the placement of heavy and bulky loads.

- Sistema PLUS: una riserva di energia per incrementare la potenza fino al 10%.
- PLUS system: extra energy to increase power by up to 10%.



**CONFORME ALLE NORME DI SICUREZZA EU
IN ACCORDANCE TO THE EU SAFETY STANDARDS**

- Bracci stabilizzatori a sfilo idraulico
- Hydraulically extended outrigger booms

Cremagliera
Slewing by rack

Bracci stabilizzatori a sfilo idraulico
Hydraulic outrigger booms

Uscita sequenziale sfilo bracci
Extension sequence boom

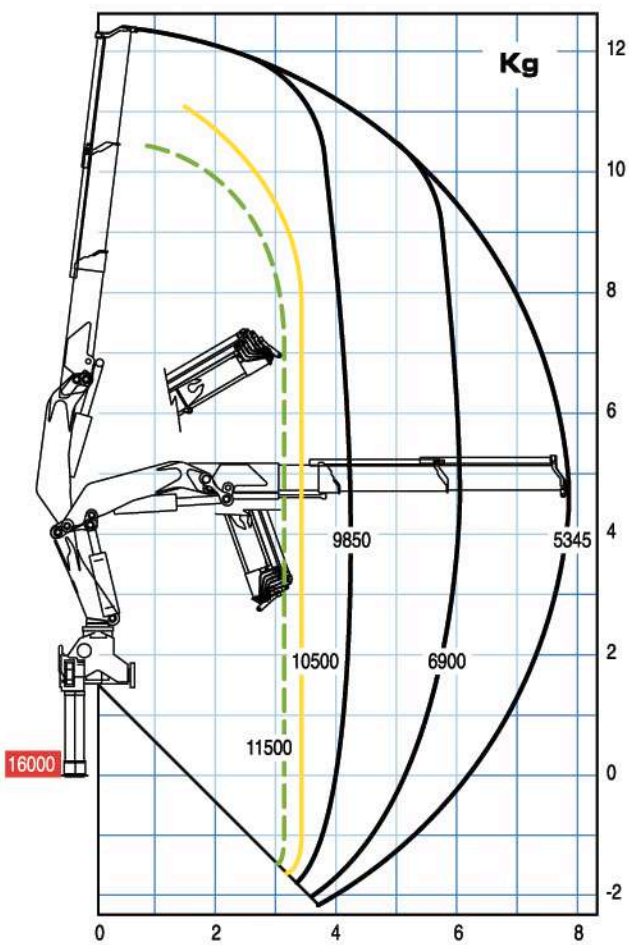
Kit valvola di blocco rotazione
Slewing valve

Doppia biella
Double connecting rods

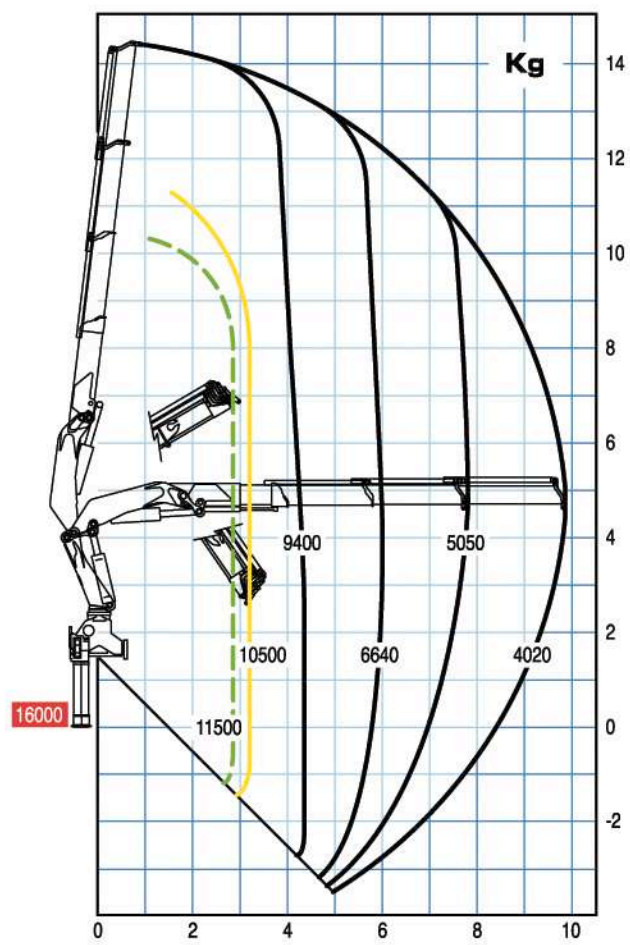
Configurazione LC
LC execution



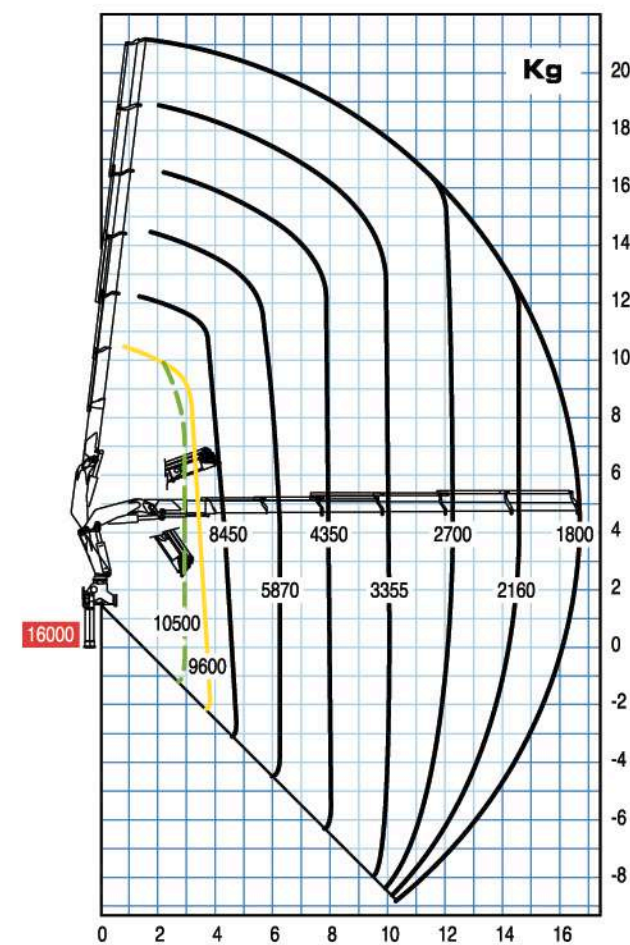
45022 SP - 45022 SP LC



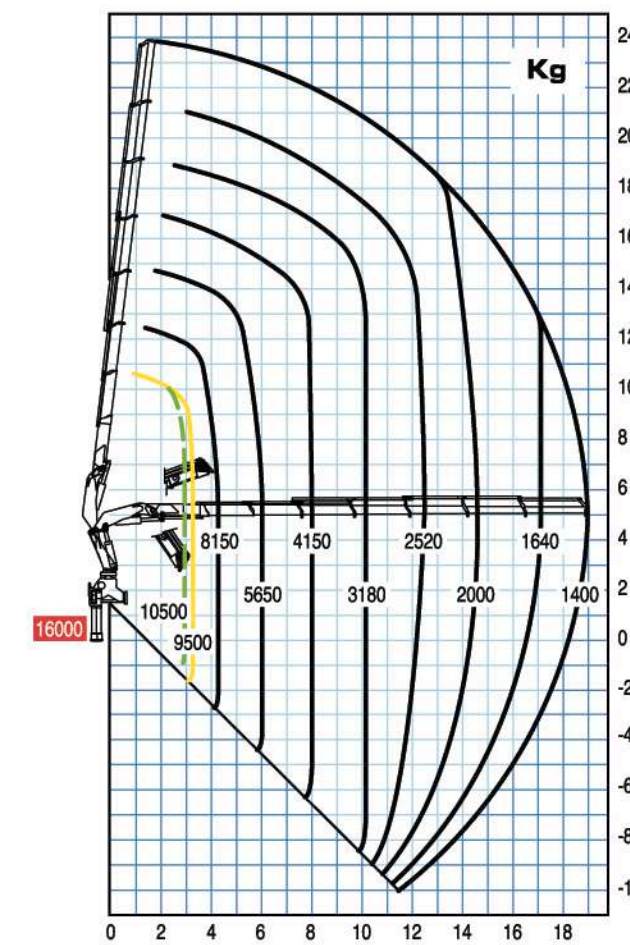
45023 SP - 45023 SP LC



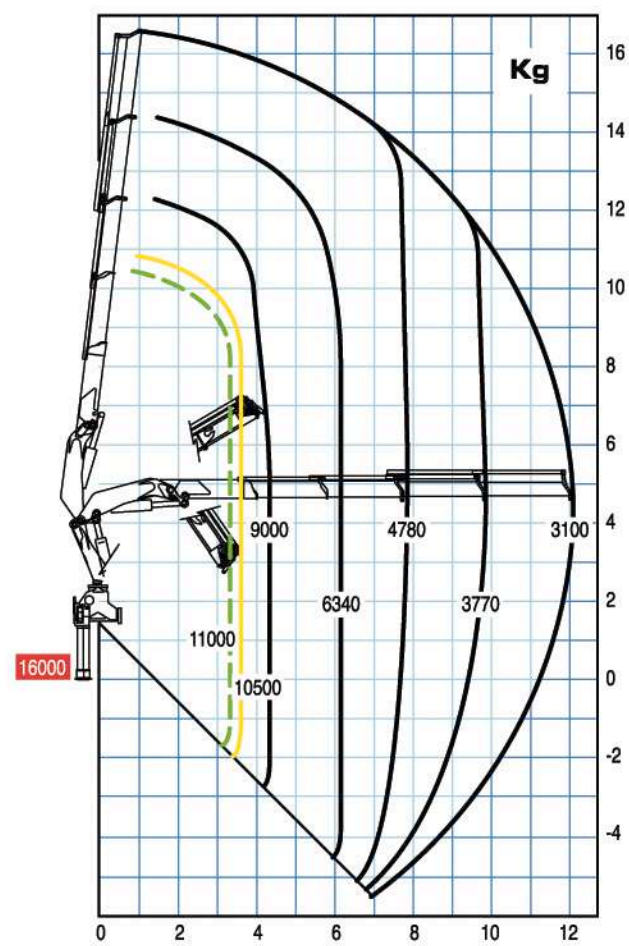
45026 SP - 45026 SP LC



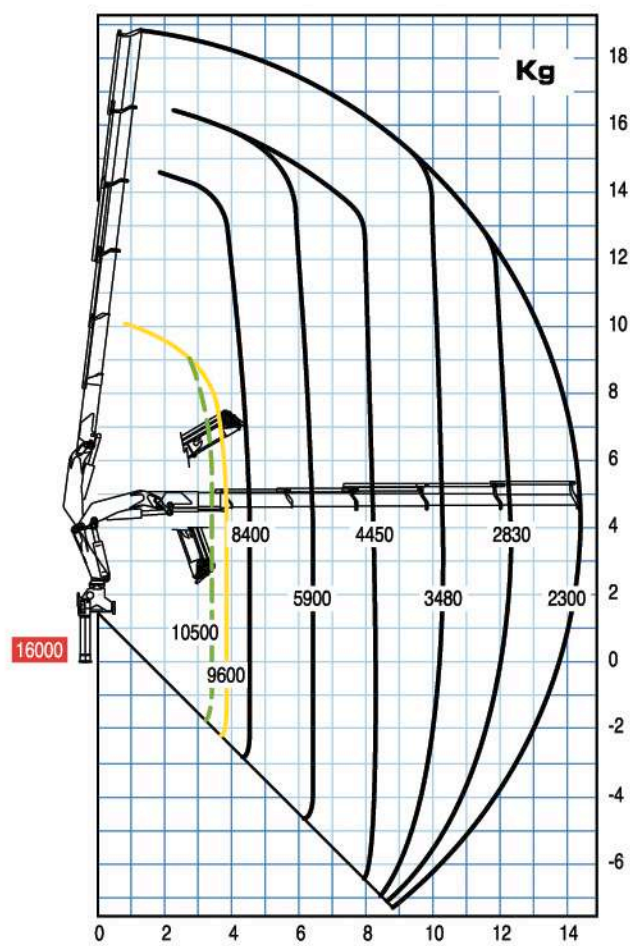
45027 SP - 45027 SP LC



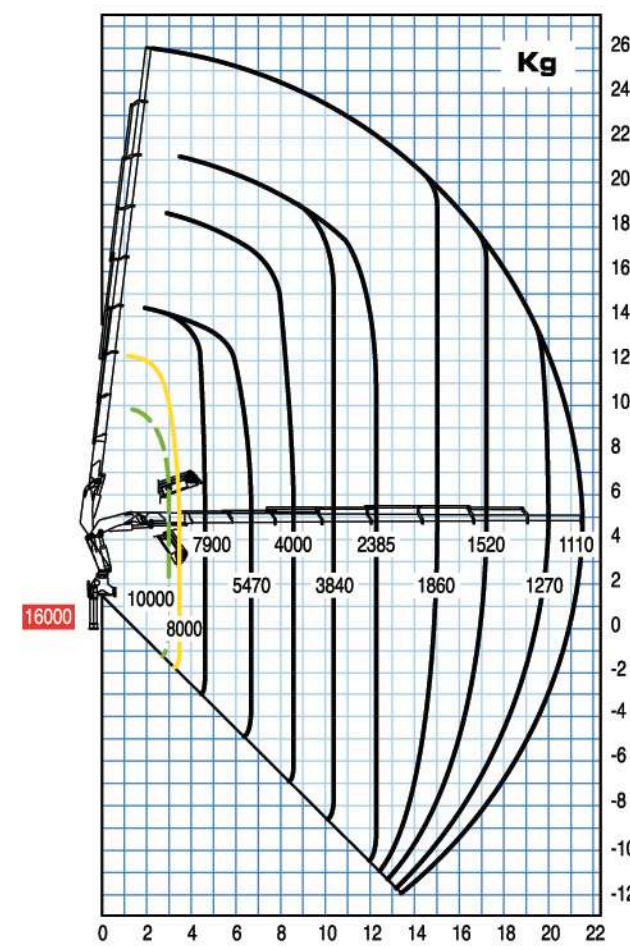
45024 SP - 45024 SP LC



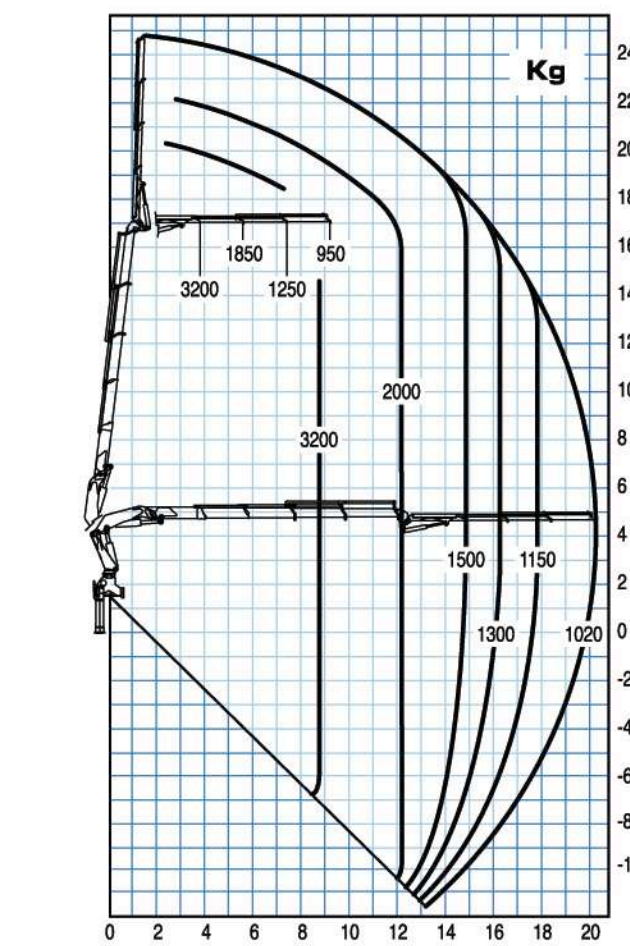
45025 SP - 45025 SP LC



45028 SP - 45028 SP LC



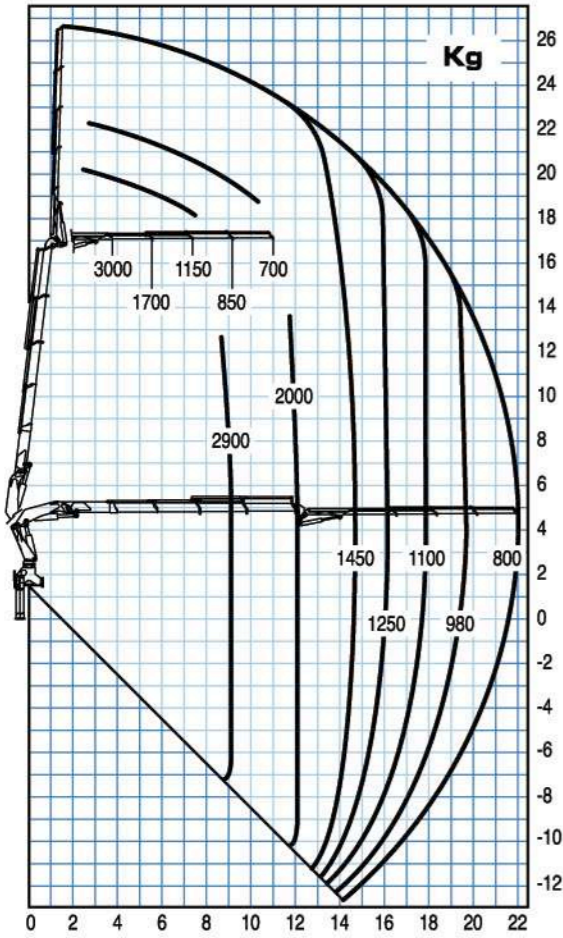
45024 SP + J903



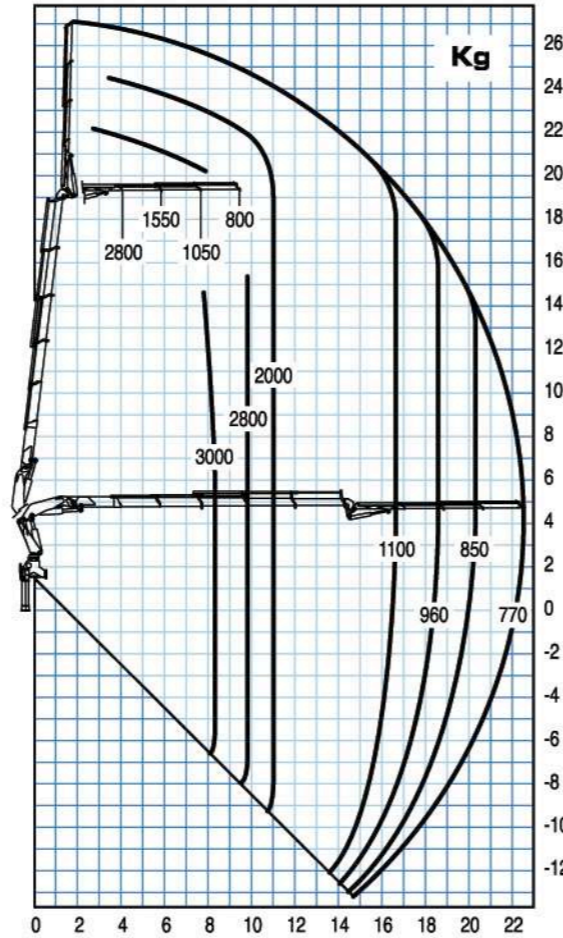
--- Portata massima passante per l'orizzontale - Max. capacity from horizontal to vertical
--- Portata massima nominale al gancio fisso - Max. nominal capacity with fixed hook

--- Solo con gru in versione LC
 Only LC crane version

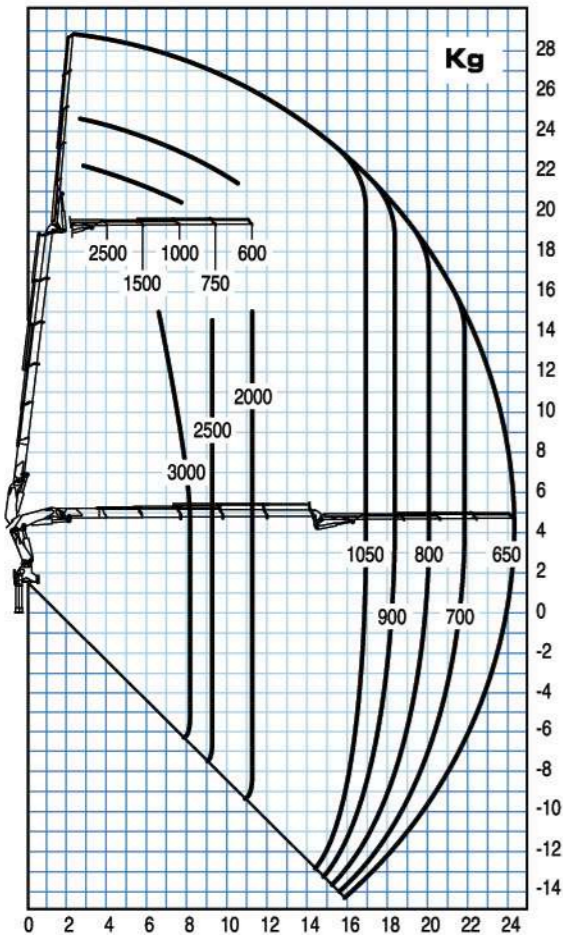
45024 SP + J904



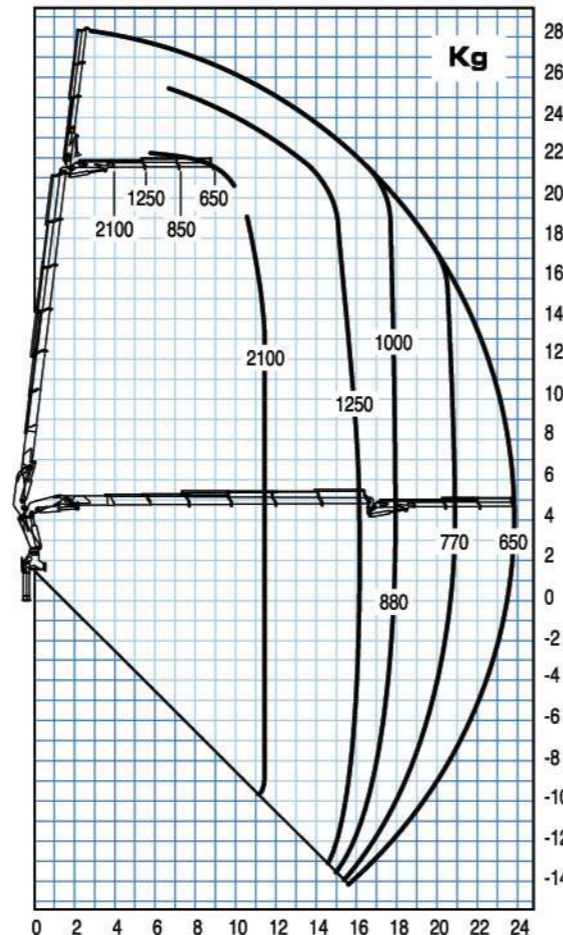
45025 SP + J903



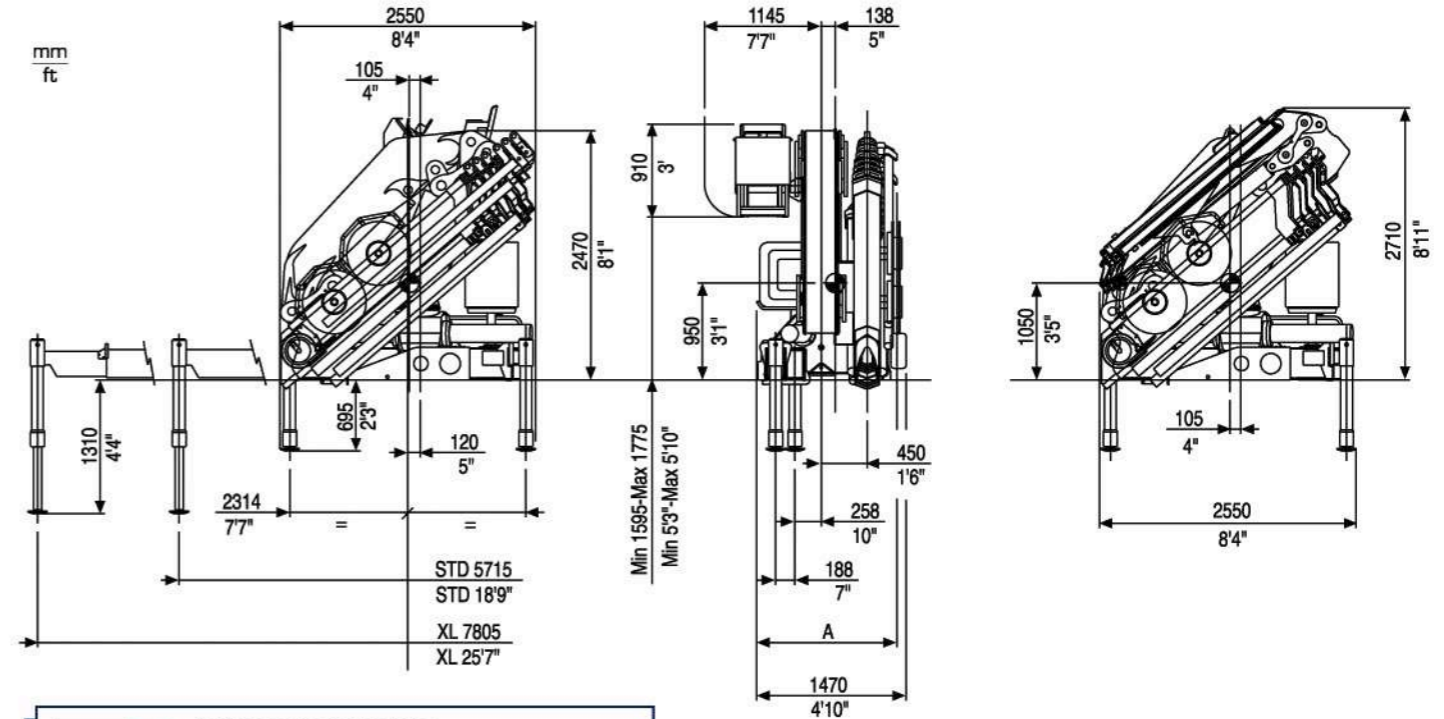
45025 SP + J904



45026 SP + J703



[45 SP] PM



PTT/GVV 45SP
26,0 ton
32,0 ton
44,0 ton

Abbinamento gru/veicolo
Trucking crane combination

4 stabilizzatori
 4 outriggers

STD 5715
 STD 18'9"
 XL 7805
 XL 25'7"

PTT: Peso totale a terra - G.V.W.

	45022	45023	45024	45025	45026	45027	45028
A (m)	1320	1320	1320	1320	1420	1420	1420
A (ft)	4'4"	4'4"	4'4"	4'4"	4'8"	4'8"	4'8"

	45022	45023	45024	45025	45026	45027	45028	45024 +J903	45024 +J904	45025 +J903	45025 +J904	45026 +J703
Momento di sollevamento massimo Maximum lifting moment	kNm 404	386	380	379	369	364	360	-	-	-	-	-
	tn 41,2	39,4	38,7	38,6	37,6	37,1	36,7	-	-	-	-	-
Sbraccio oleodinamico Maximum hydraulic reach												
orizzontale - horizontal	m 7,80	9,90	12,10	14,60	16,65	19,10	21,45	20,20	22,00	22,45	24,25	24,25
verticale - vertical	m 11,45	13,55	15,70	18,00	20,20	22,50	24,90	23,95	25,75	26,20	27,95	27,95
Sbraccio con prolunghe Maximum reach with manual extensions												
orizzontale - horizontal	m 12,10	16,65	21,45	23,95	23,95	23,95	23,95	25,15	25,15	27,40	27,40	27,40
verticale - vertical	m 15,85	20,30	25,10	27,60	27,60	27,60	27,60	29,40	29,40	31,70	31,70	31,70
Impianto oleodinamico - Hydraulic system portata raccomandata - recommended oil flow	l/min 50	50	50	50	50	50	50	50	50	50	50	50
pressione massima - rated pressure	Mpa 31	31	31	31	31	31	31	31	31	31	31	31
capacità del serbatoio - tank capacity	l 200	200	200	200	200	200	200	200	200	200	200	200
Gruppo di rotazione - Slewing system angolo di rotazione - slewing angle	° 400	400	400	400	400	400	400	400	400	400	400	400
coppia di rotazione - slewing moment	kNm 40	40	40	40	40	40	40	40	40	40	40	40
pendenza massima di lavoro - max. working heel	%(°) 8,7(5)	8,7(5)	8,7(5)	8,7(5)	8,7(5)	8,7(5)	8,7(5)	0	0	0	0	0
Peso della gru standard - Standard crane weight Con serbatoio non rifornito - Empty oil tank	Kg 4355	4595	4840	5060	5260	5425	5570	5810	5890	6010	6080	6005
Versione LC - LC version Con serbatoio non rifornito - Empty oil tank	Kg 4510	4750	4995	5215	5415	5580	5725	5965	6045	6165	6245	6160

Tutte le gru PM sono coperte da polizza assicurativa internazionale per la responsabilità civile verso terzi
 All PM Cranes are covered by international insurance policy for civil liability third party
 I dati tecnici possono essere aggiornati senza preavviso - Technical data can be revised without prior notice