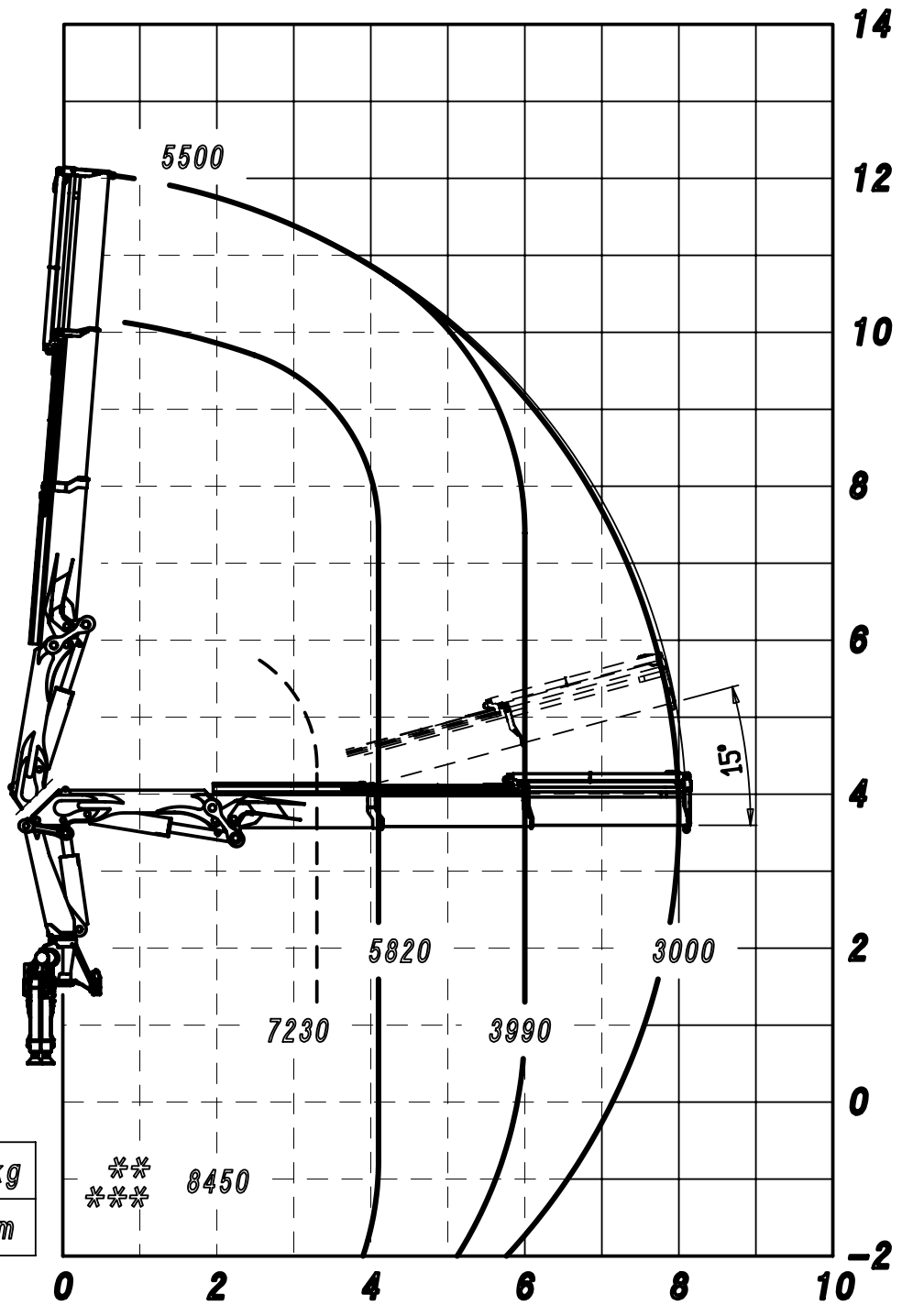


kg
m

A

B

C



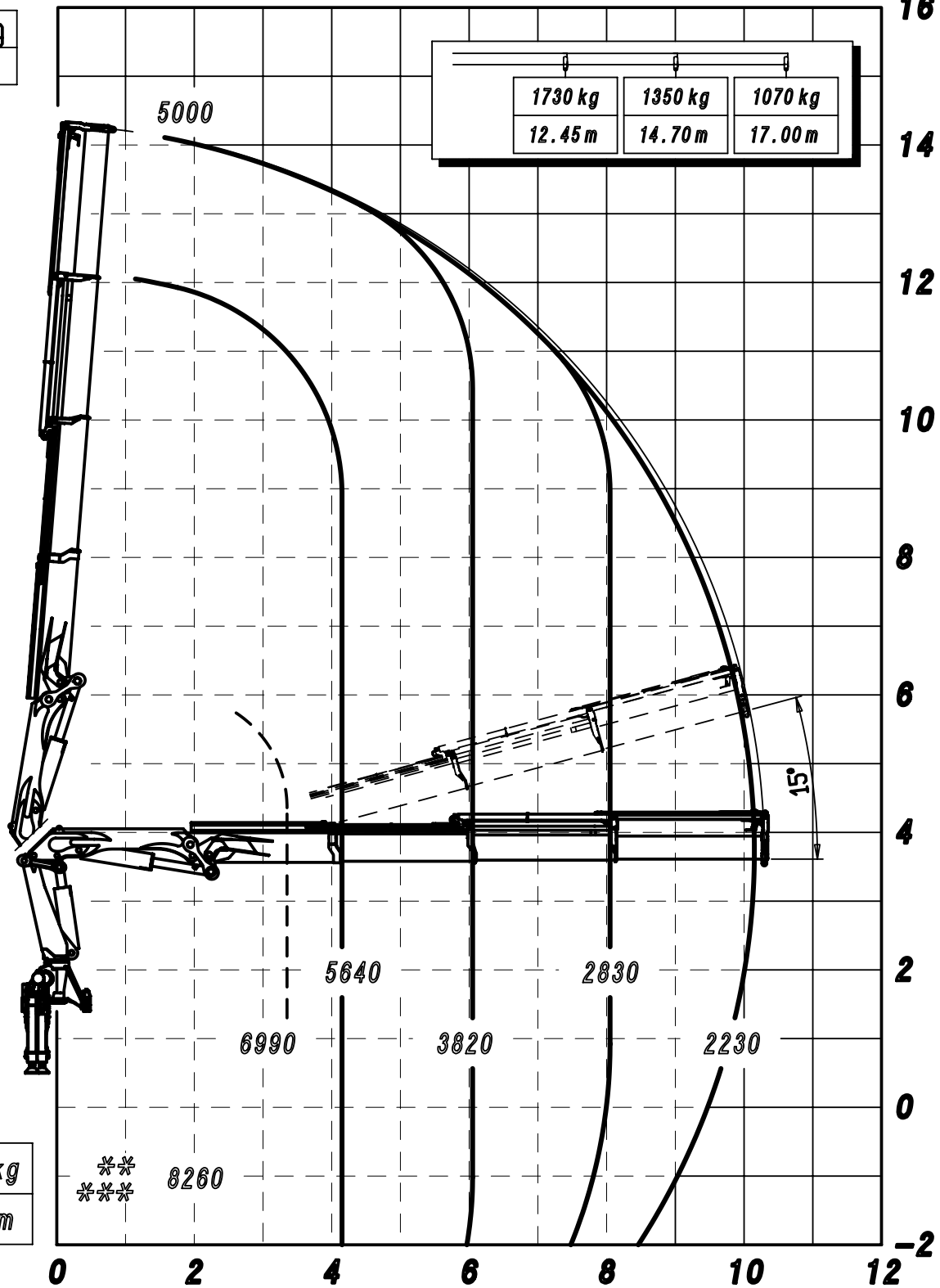
10850 kg
2.20 m

- - PORTATA VERSIONE LC
 ** PORTATA MASSIMA AL GANCIO MOBILE
 *** PORTATA MASSIMA PASSANTE PER L'ORIZZONTALE
 LE PRESTAZIONI INDICATE SI OTTENGONO CON
 ANGOLO DI TARGA A 20°

** 26522 S ** 188030

19/12/2013

kg
m



-- PORTATA VERSIONE LC

** PORTATA MASSIMA AL GANCIO MOBILE

*** PORTATA MASSIMA PASSANTE PER L'ORIZZONTALE

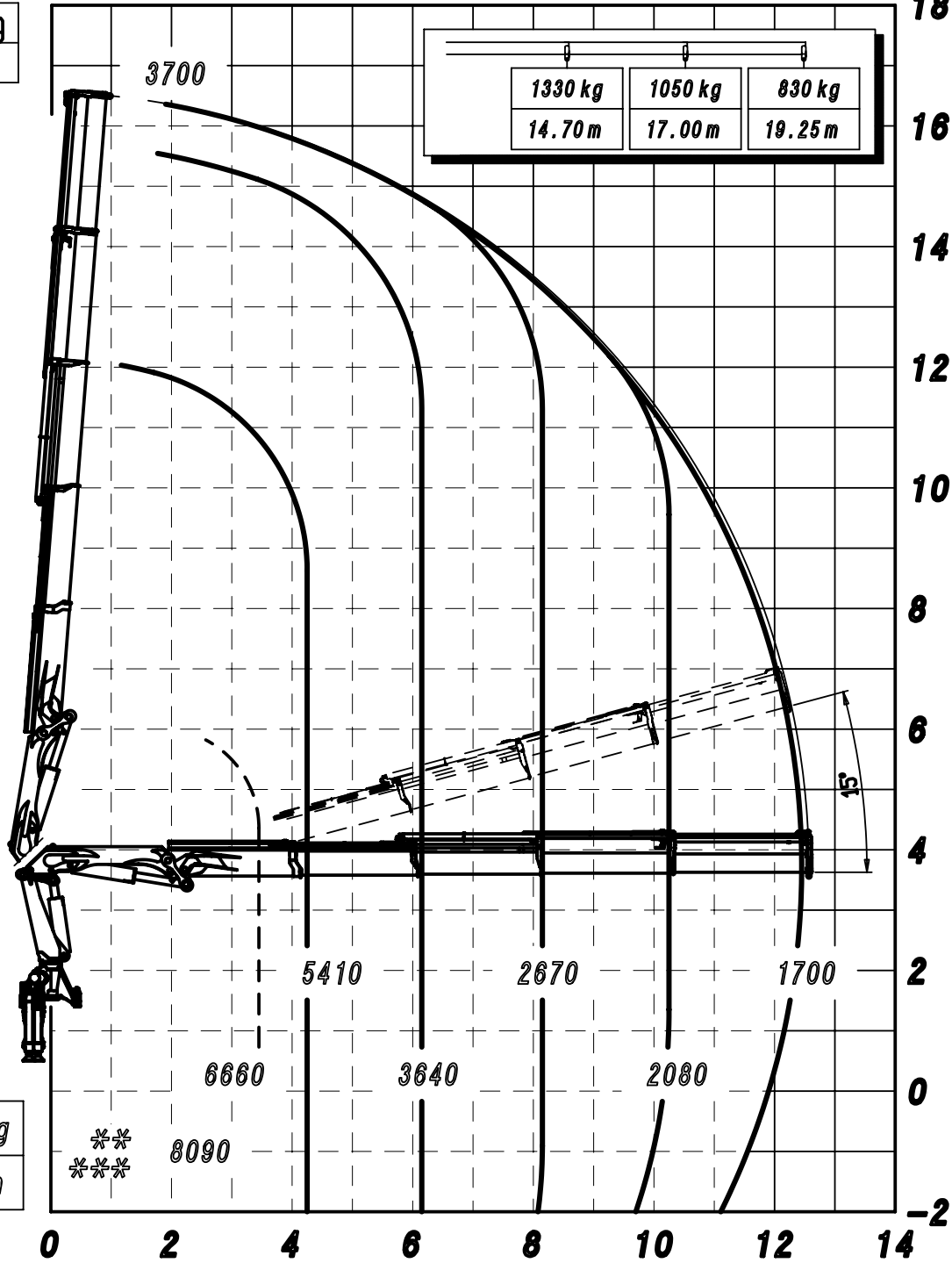
LE PRESTAZIONI INDICATE SI OTTENGONO CON

ANGOLO DI TARGA A 20°

** 26523 S ** 188031

19/12/2013

kg
m



-- PORTATA VERSIONE LC

** PORTATA MASSIMA AL GANCIO MOBILE

*** PORTATA MASSIMA PASSANTE PER L'ORIZZONTALE

LE PRESTAZIONI INDICATE SI OTTENGONO CON

ANGOLO DI TARGA A 20°

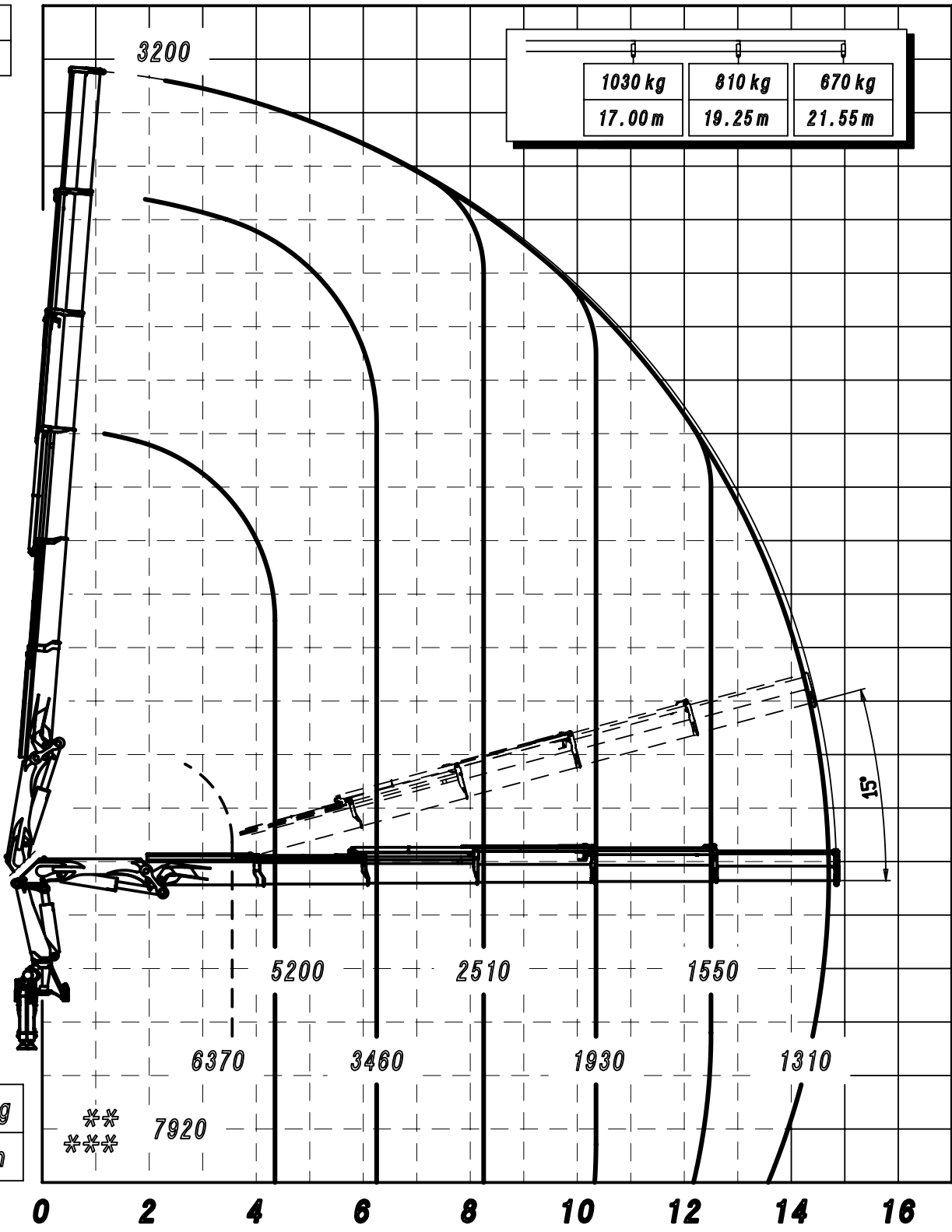
** 26524 S ** 188032

19/12/2013

20
18
16
14
12
10
8
6
4
2
0
-2

kg
m

1030 kg	810 kg	670 kg
17.00 m	19.25 m	21.55 m

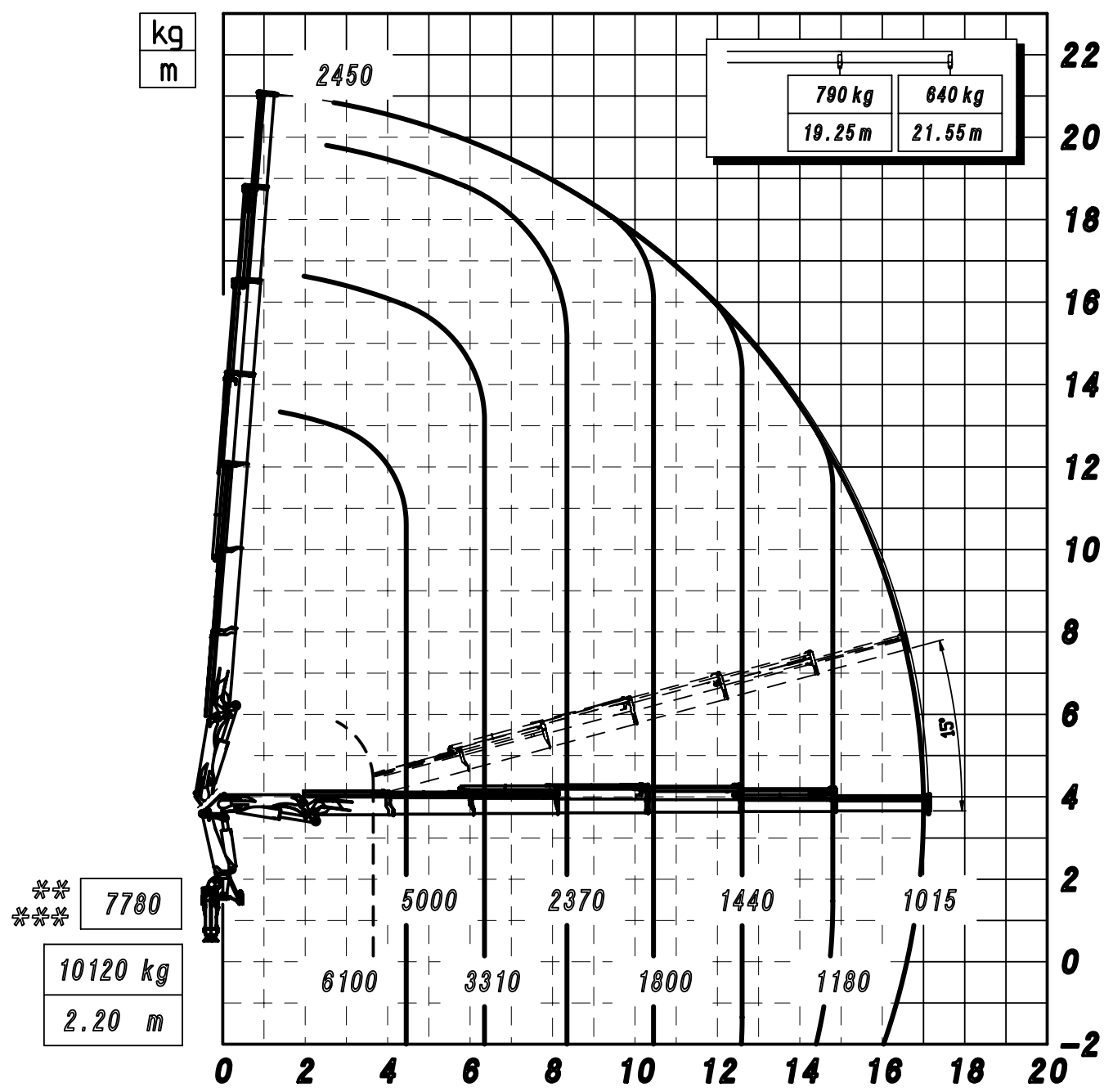


10280 kg
2.20 m

-- PORTATA VERSIONE LC
 ** PORTATA MASSIMA AL GANCI MOBILE
 *** PORTATA MASSIMA PASSANTE PER L'ORIZZONTALE
 LE PRESTAZIONI INDICATE SI OTTENGONO CON
 ANGOLO DI TARGA A 20°

** 26525 S ** 188033

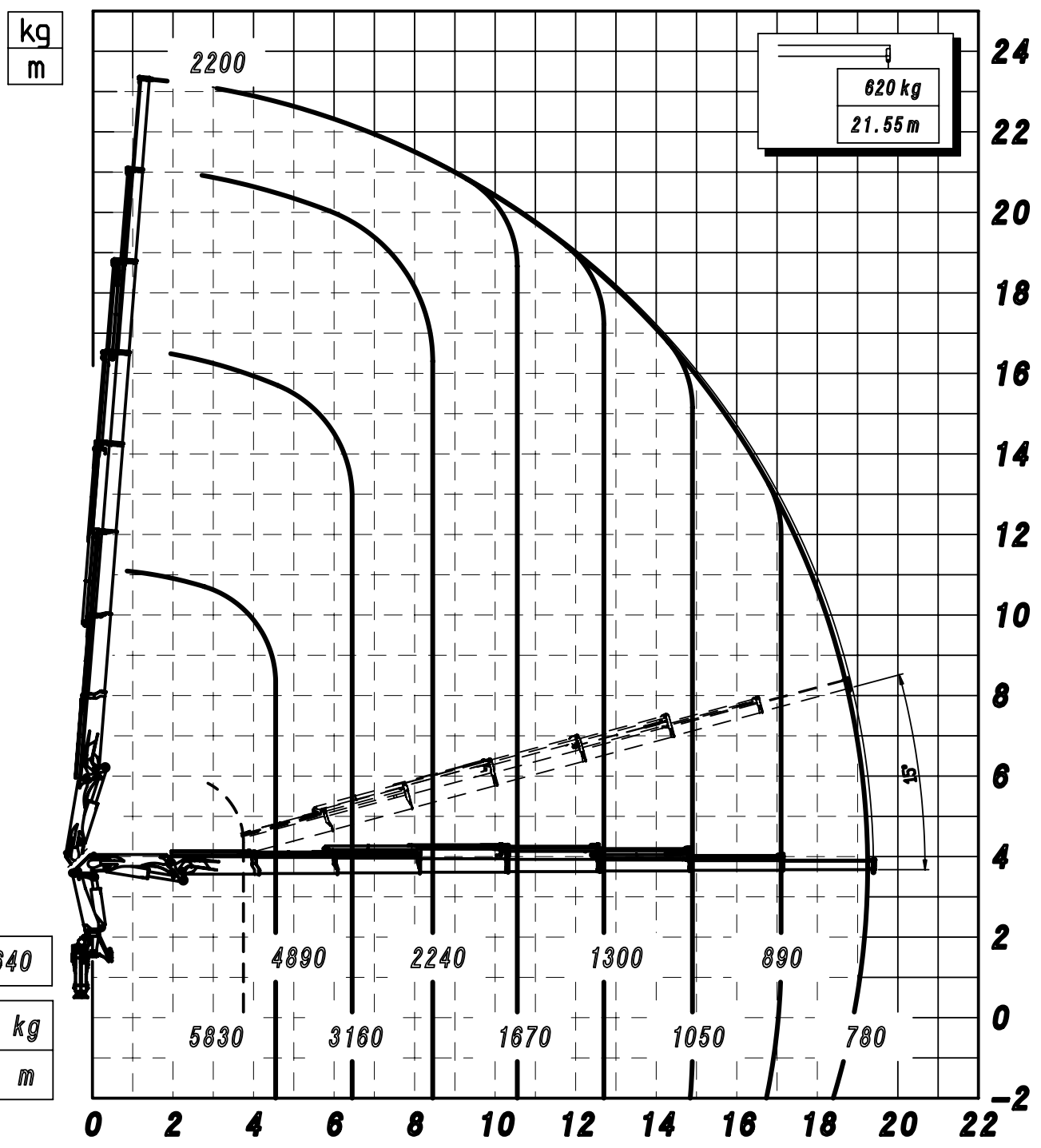
19/12/2013



-- PORTATA VERSIONE LC
 ** PORTATA MASSIMA AL GANCIO MOBILE
 *** PORTATA MASSIMA PASSANTE PER L'ORIZZONTALE
 LE PRESTAZIONI INDICATE SI OTTENGONO CON
 ANGOLO DI TARGA A 20°

** 26526 S ** 188034

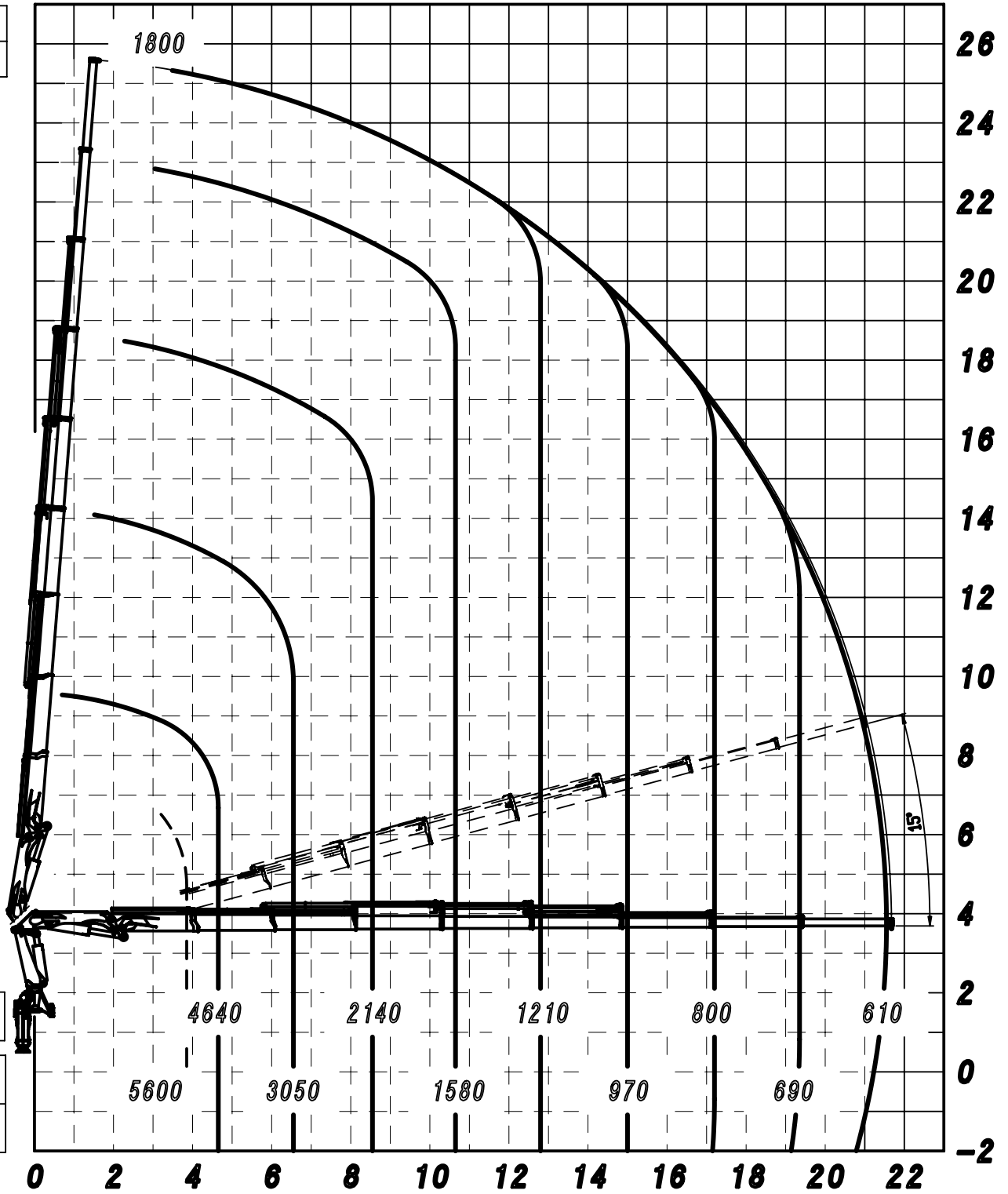
19/12/2013



- - PORTATA VERSIONE LC
 ** PORTATA MASSIMA AL GANCIO MOBILE
 *** PORTATA MASSIMA PASSANTE PER L'ORIZZONTALE
 LE PRESTAZIONI INDICATE SI OTTENGONO CON ANGOLO DI TARGA A 20°

** 26527 S ** 188035
 19/12/2013

kg
m



— — PORTATA VERSIONE LC
 ** PORTATA MASSIMA AL GANCIO MOBILE
 *** PORTATA MASSIMA PASSANTE PER L'ORIZZONTALE
 LE PRESTAZIONI INDICATE SI OTTENGONO CON
 ANGOLO DI TARGA A 20°

** 26528 S ** 188036

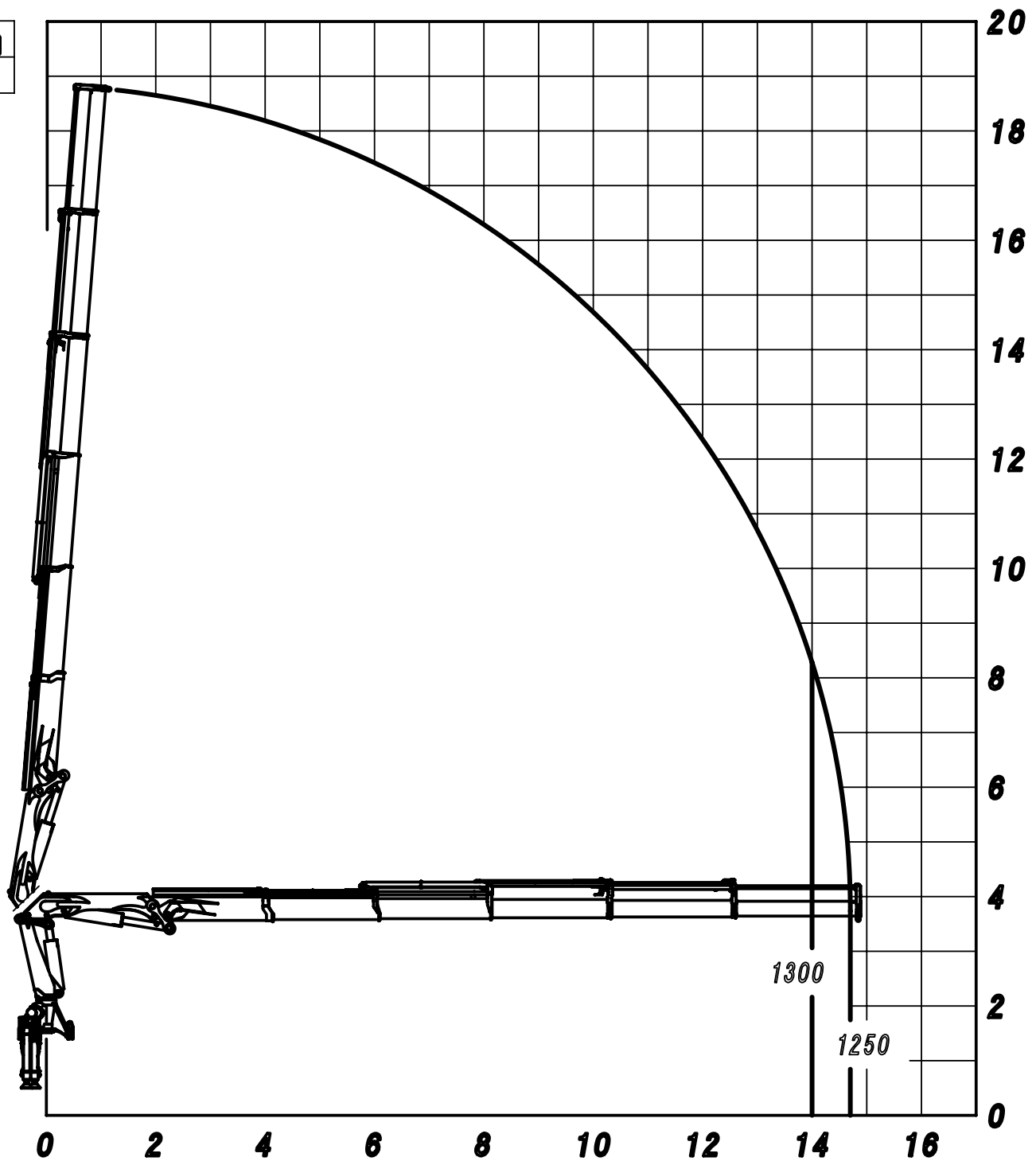
19/12/2013

kg
m

A

B

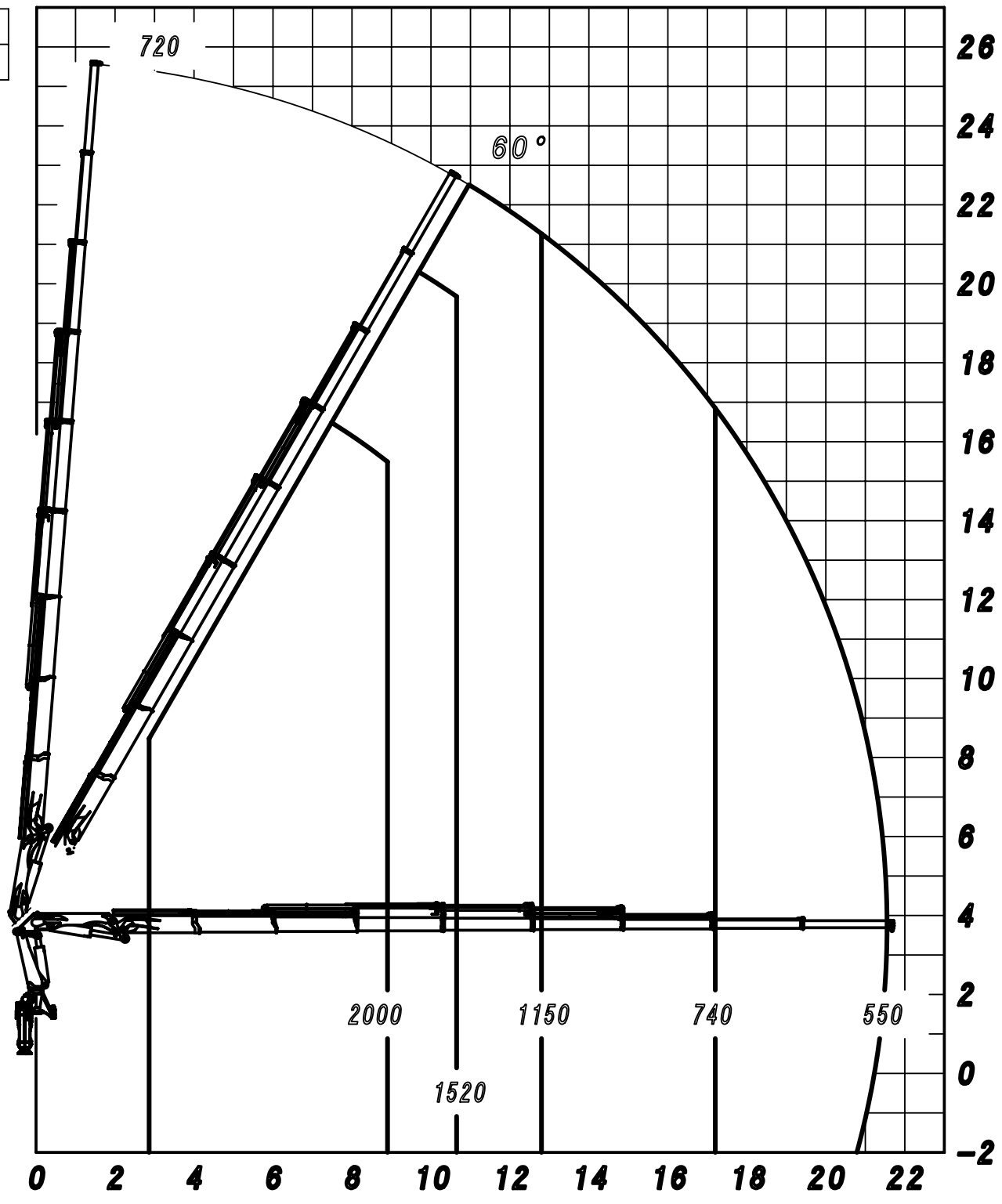
C



** 26525 S + P15 ** 188383

08/04/2014

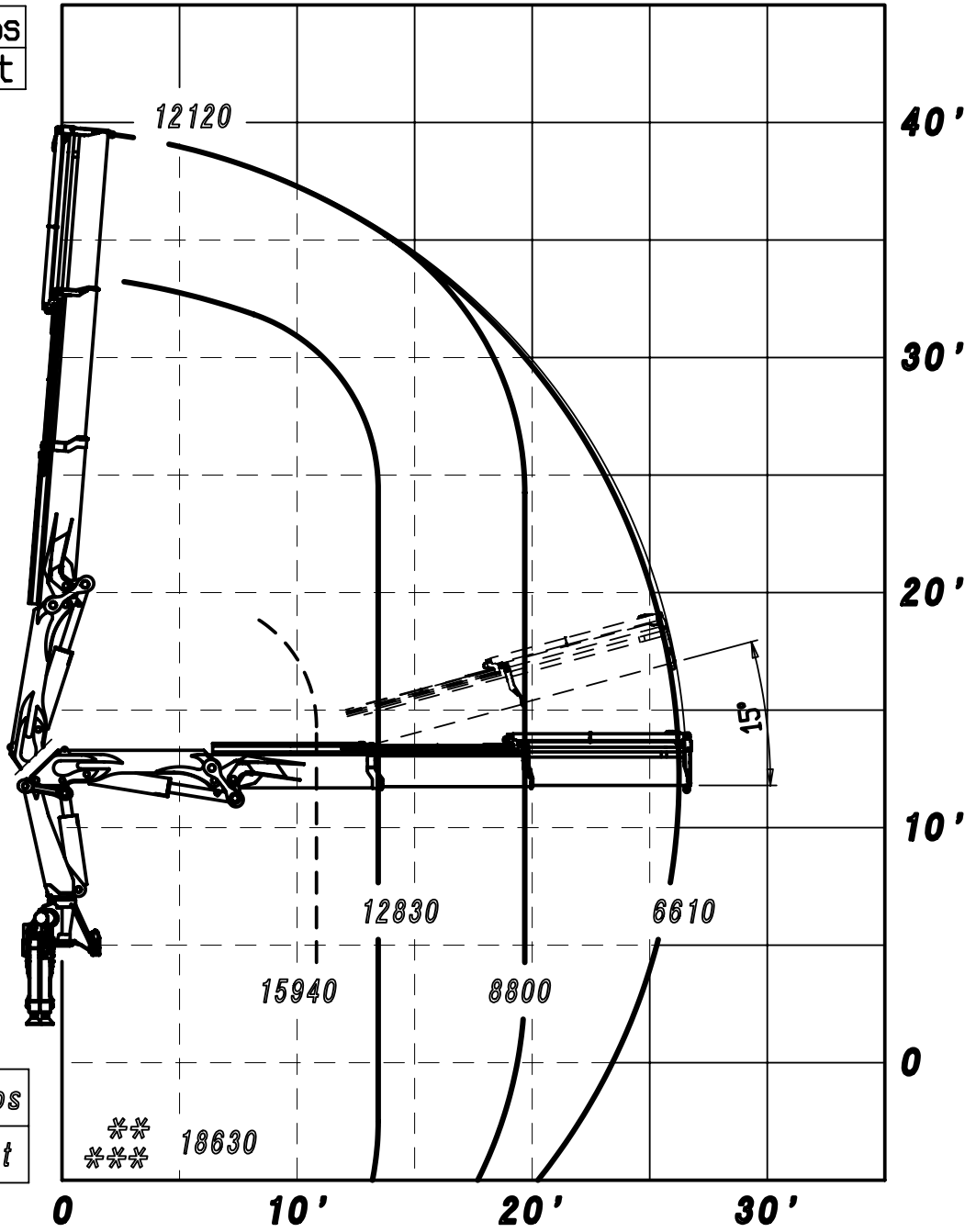
kg
m



** 26528 S + P15 ** 188467

17/11/2014

lbs
ft



23920 lbs
7'3" ft

— — MAX. CAPACITY LC
 ** MAX. CAPACITY WITH MOBILE HOOK
 *** MAX. CAPACITY FROM HORIZONTAL TO VERTIUCAL
 THE STATED PERFORMANCES CAM BE OBTAINED WITH
 20° INCLINATED MAIN BOOM

** 26522 S ** 188037
 19/12/2013

lbs
ft

3810 lbs	2980 lbs	2360 lbs
40'10" ft	48'3" ft	55'9" ft

50'

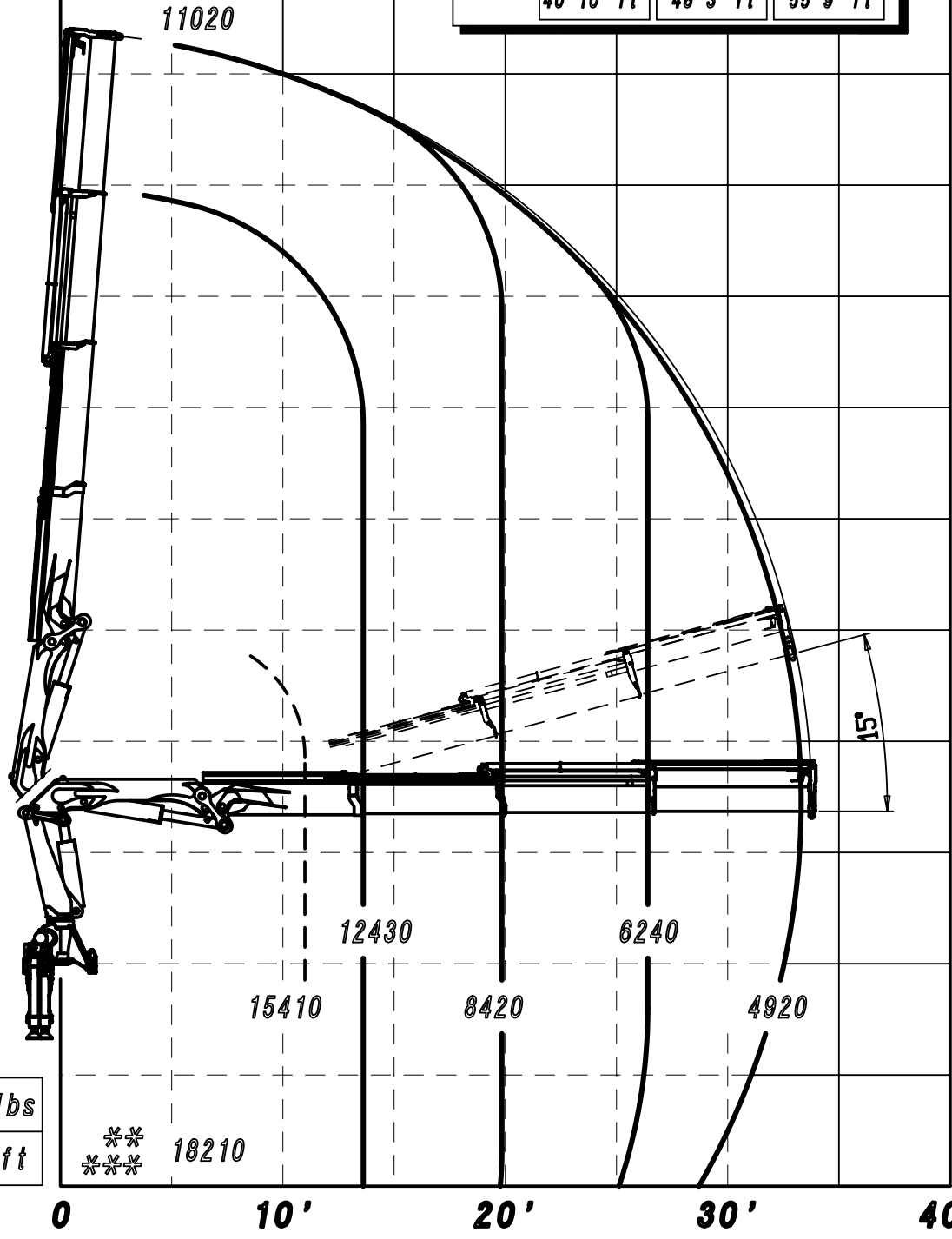
40'

30'

20'

10'

0



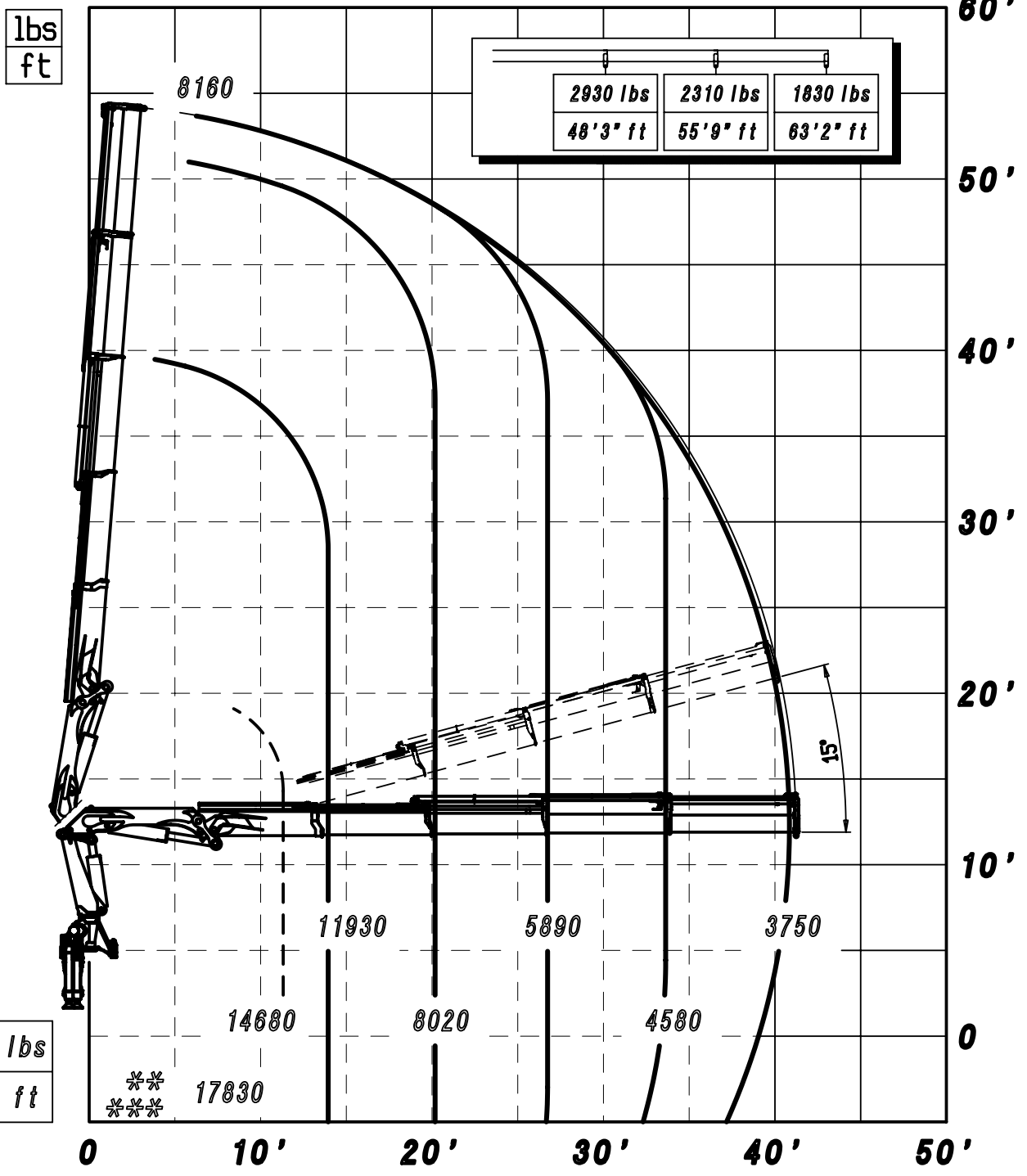
23480 lbs
7'3" ft

**
18210

-- MAX. CAPACITY LC
 ** MAX. CAPACITY WITH MOBILE HOOK
 *** MAX. CAPACITY FROM HORIZONTAL TO VERTIVCAL
 THE STATED PERFORMANCES CAM BE OBTAINED WITH
 20° INCLINATED MAIN BOOM

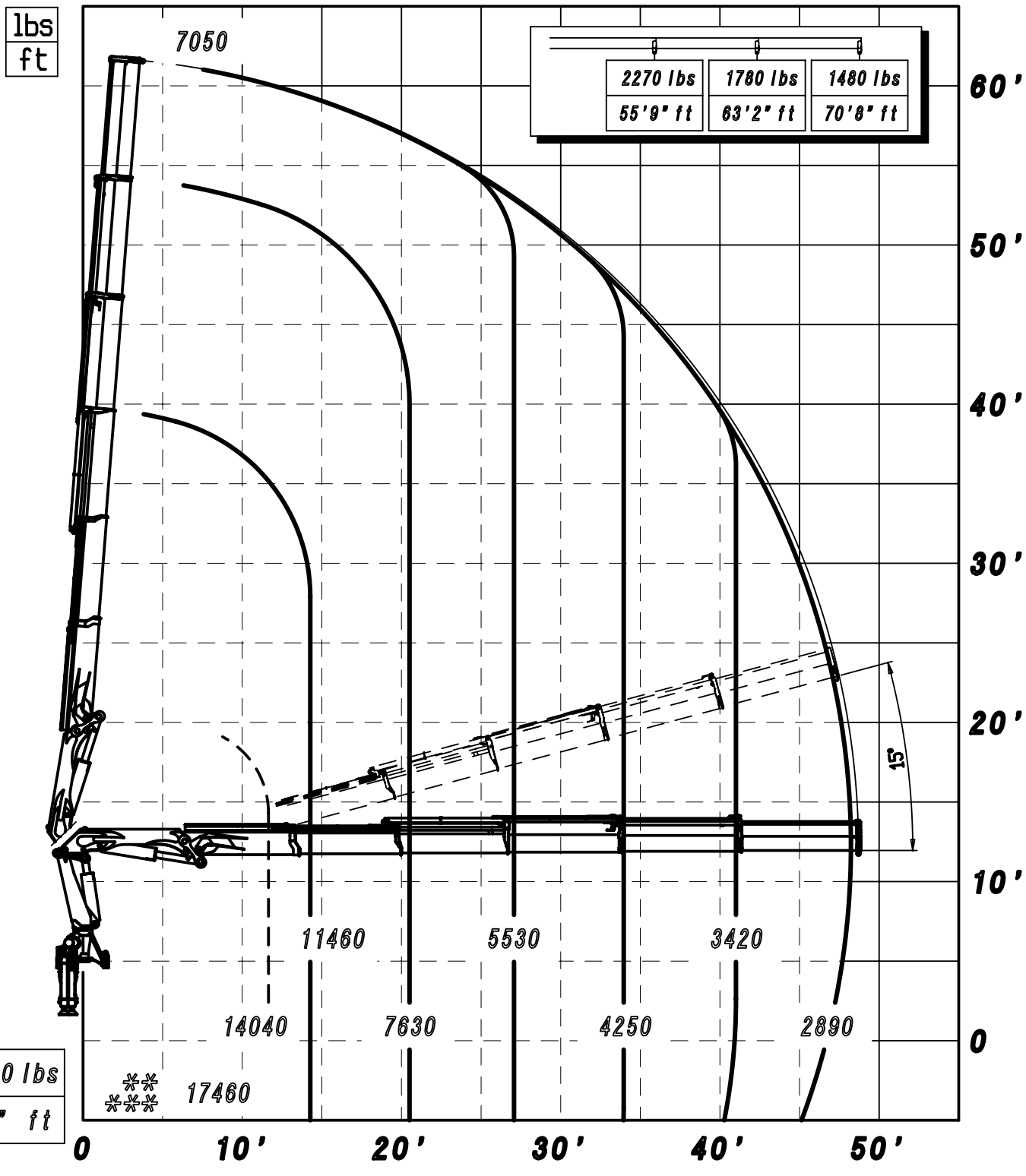
** 26523 S ** 188038

19/12/2013



— — MAX. CAPACITY LC
 ** MAX. CAPACITY WITH MOBILE HOOK
 *** MAX. CAPACITY FROM HORIZONTAL TO VERTIUCAL
 THE STATED PERFORMANCES CAN BE OBTAINED WITH
 20° INCLINATED MAIN BOOM

** 26524 S ** 188039
 19/12/2013



-- MAX. CAPACITY LC
 ** MAX. CAPACITY WITH MOBILE HOOK
 *** MAX. CAPACITY FROM HORIZONTAL TO VERTIVCAL
 THE STATED PERFORMANCES CAM BE OBTAINED WITH
 20° INCLINATED MAIN BOOM

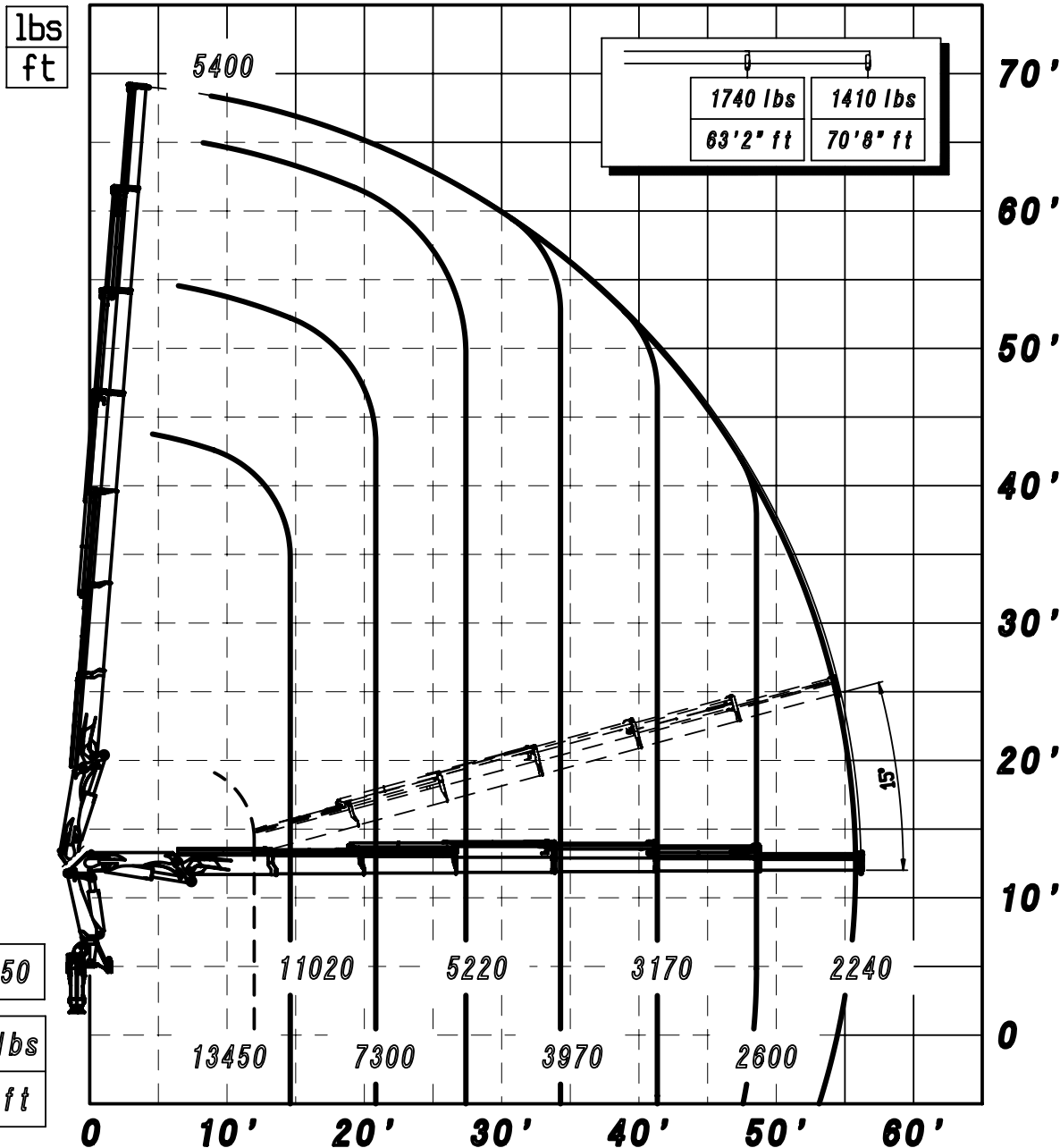
** 26525 S ** 188040

19/12/2013

A

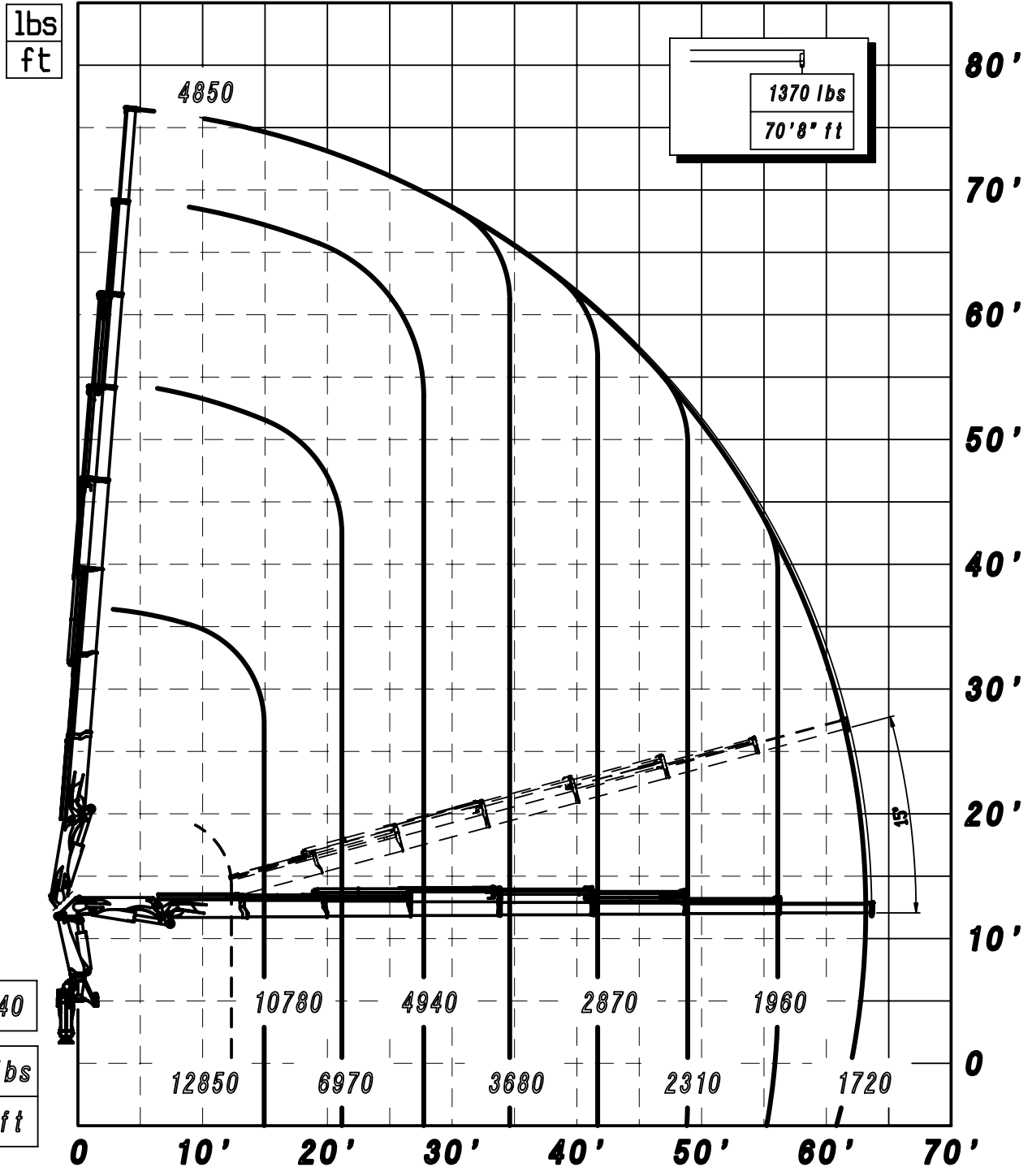
B

C



-- MAX. CAPACITY LC
 ** MAX. CAPACITY WITH MOBILE HOOK
 *** MAX. CAPACITY FROM HORIZONTAL TO VERTIUCAL
 THE STATED PERFORMANCES CAM BE OBTAINED WITH
 20° INCLINATED MAIN BOOM

** 26526 S ** 188041
 19/12/2013



** 16840

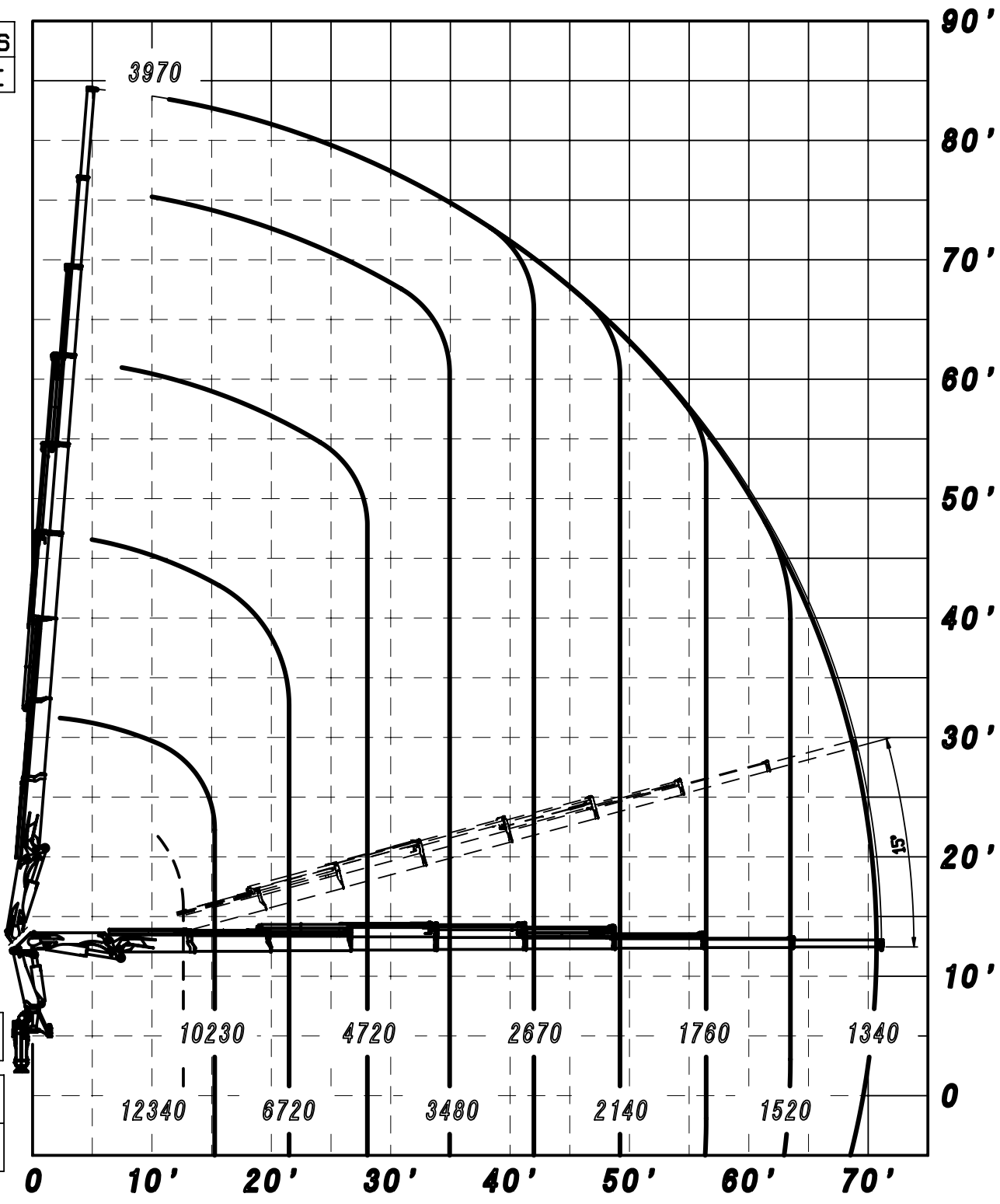
 21890 lbs
 7'3" ft

1370 lbs
 70'8" ft

-- MAX. CAPACITY LC
 ** MAX. CAPACITY WITH MOBILE HOOK
 *** MAX. CAPACITY FROM HORIZONTAL TO VERTIICAL
 THE STATED PERFORMANCES CAN BE OBTAINED WITH
 20° INCLINED MAIN BOOM

** 26527 S ** 188042
 19/12/2013

lbs
ft



** 16600

 21630 lbs
 7'3" ft

- - MAX. CAPACITY LC
 ** MAX. CAPACITY WITH MOBILE HOOK
 *** MAX. CAPACITY FROM HORIZONTAL TO VERTIICAL
 THE STATED PERFORMANCES CAN BE OBTAINED WITH
 20° INCLINATED MAIN BOOM

** 26528 S ** 188043

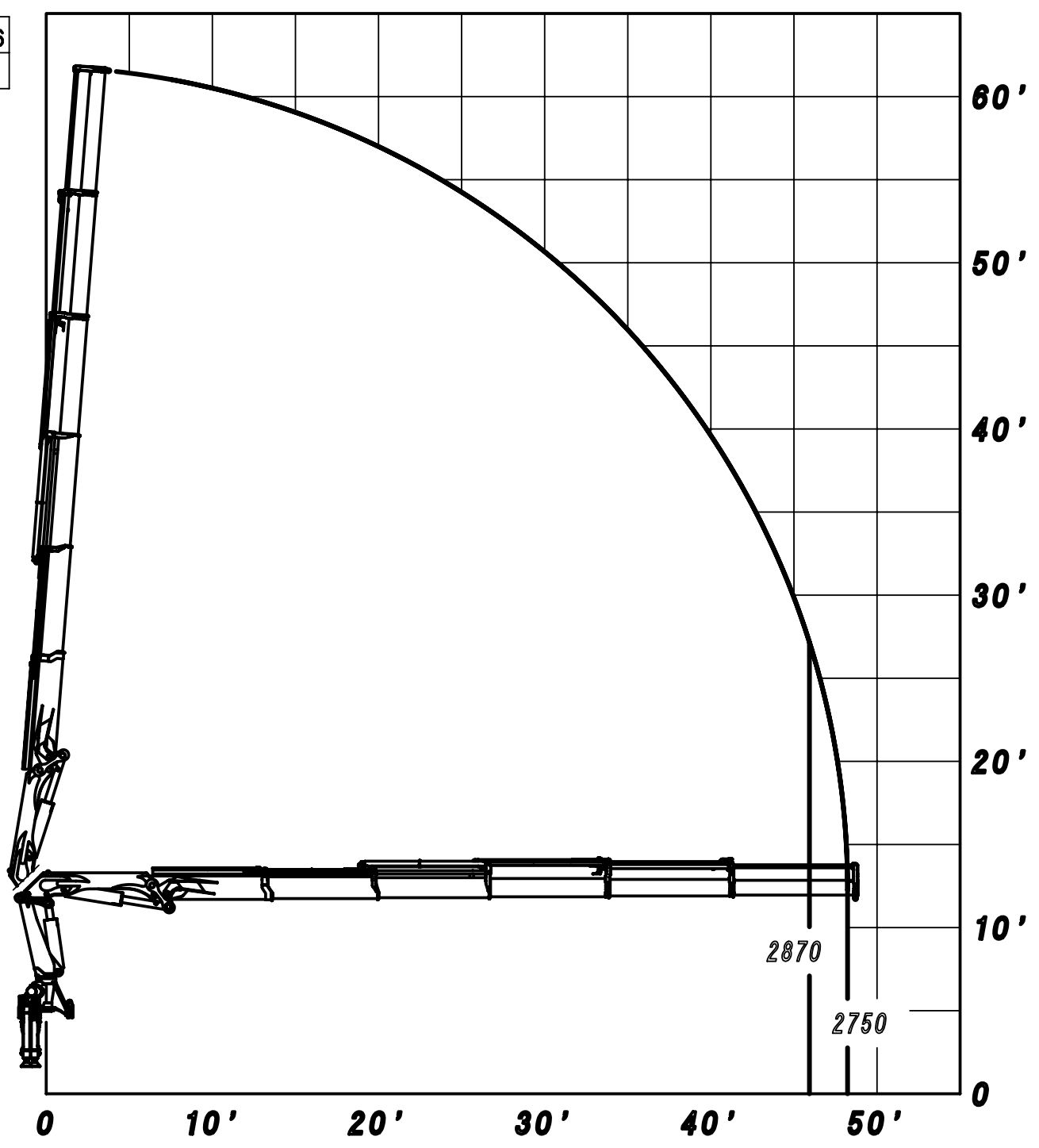
19/12/2013

lbs
ft

A

B

C



** 26525 S + P15 ** 188384

08/04/2014

A	mm	ft
Vers.22	2525	8'3"
Vers.23	2525	8'3"
Vers.24	2525	8'3"
Vers.25	2545	8'4"
Vers.26	2545	8'4"
Vers.27	2545	8'4"
Vers.28	2545	8'4"

F	mm	ft
Vers.22	1285	4'3"
Vers.23	1285	4'3"
Vers.24	1285	4'3"
Vers.25	1285	4'3"
Vers.26	1285	4'3"
Vers.27	1350	4'5"
Vers.28	1350	4'5"

B	mm	ft
Vers.22	2365	7'9"
Vers.23	2365	7'9"
Vers.24	2365	7'9"
Vers.25	2365	7'9"
Vers.26	2365	7'9"
Vers.27	2365	7'9"
Vers.28	2410	7'11"

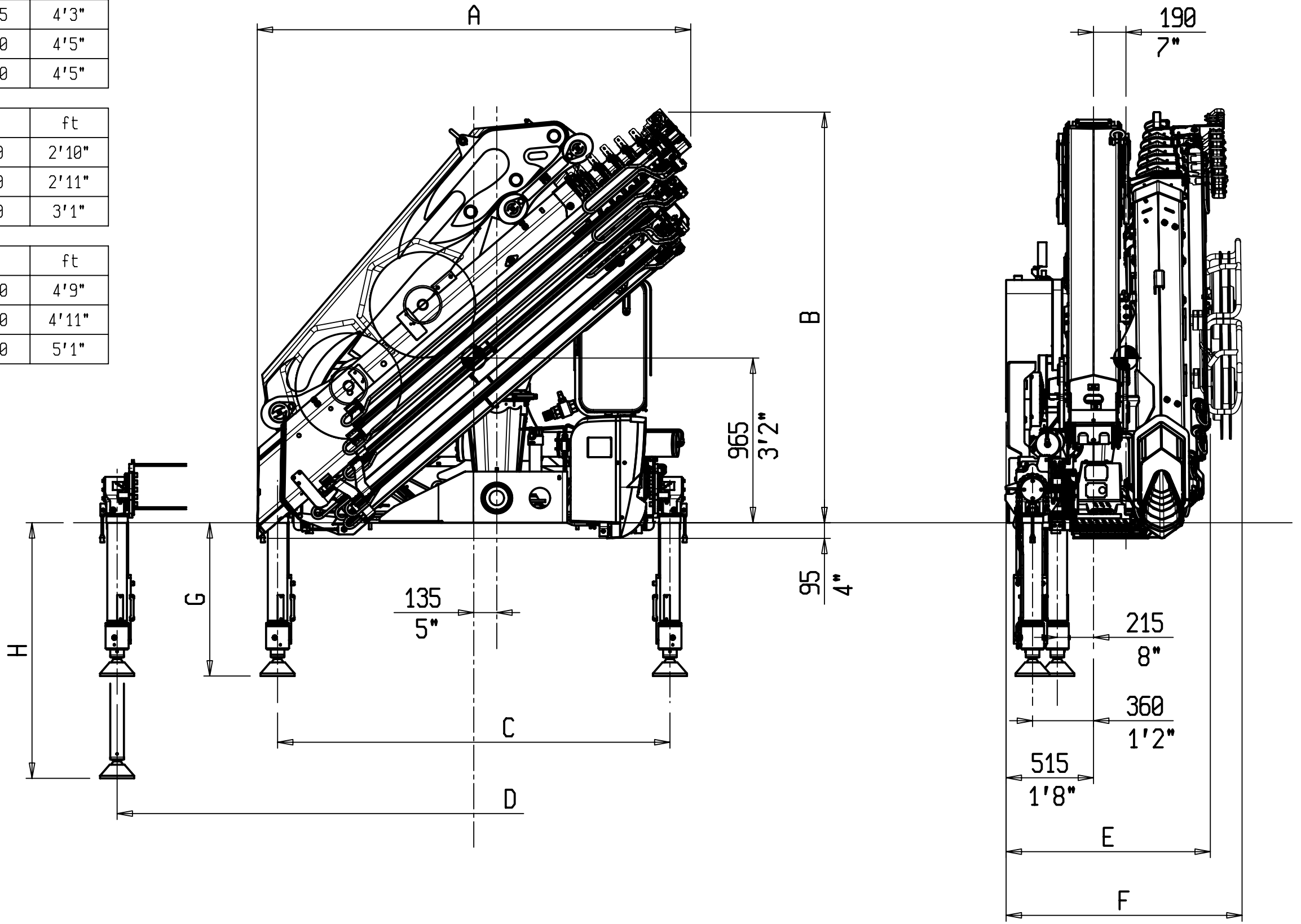
G	mm	ft
Fissi A	860	2'10"
Fissi B	900	2'11"
Rotanti	940	3'1"

H	mm	ft
Fissi A	1460	4'9"
Fissi B	1500	4'11"
Rotanti	1540	5'1"

C	mm	ft
Fissi	2250	7'5"
Rotanti	2300	7'7"

D	mm	ft
STD	5465	17'11"
STD+ROT	5520	18'1"
XL	6545	21'6"
XL+ROT	6600	21'8"
SXL	7345	24'1"
SXL+ROT	7400	24'3"

E	mm	ft
Vers.22	1075	3'6"
Vers.23	1075	3'6"
Vers.24	1075	3'6"
Vers.25	1135	3'9"
Vers.26	1160	3'10"
Vers.27	1185	3'11"
Vers.27	1200	3'11"



** PM 26.5 S - 28.5 SP ** 188072

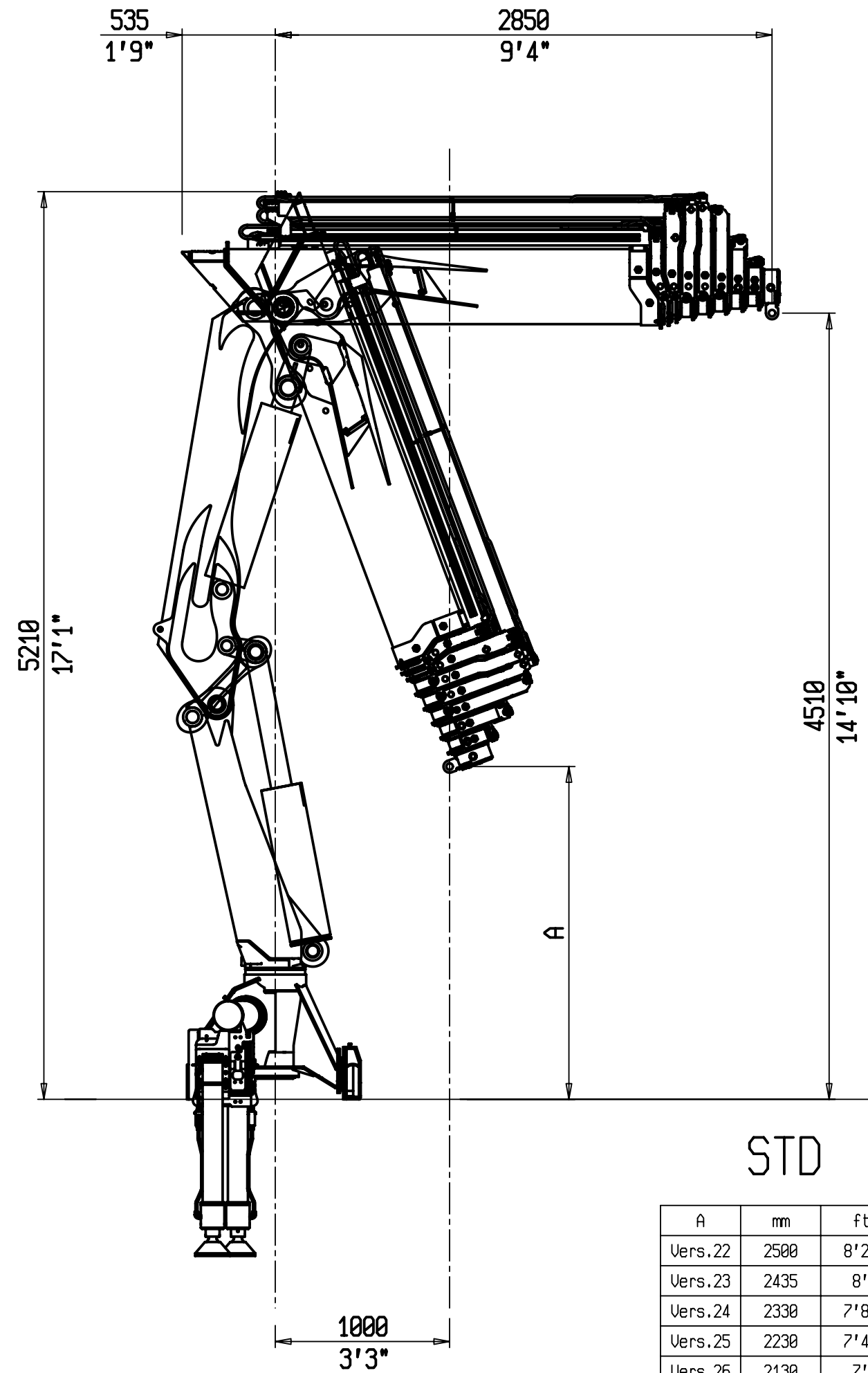
04/10/2013

1

2

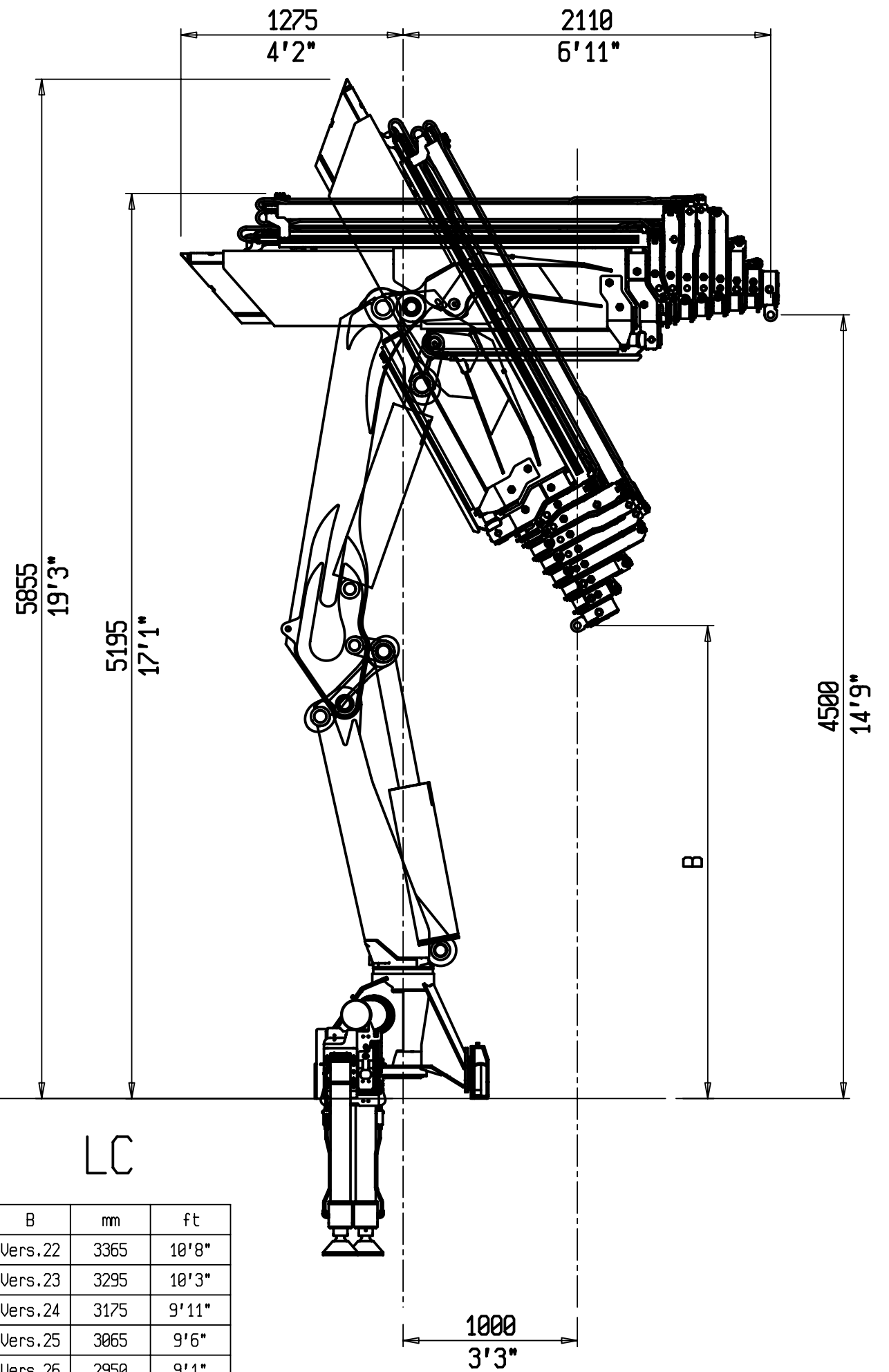
3

4



STD

A	mm	ft
Vers.22	2500	8'2"
Vers.23	2435	8'
Vers.24	2330	7'8"
Vers.25	2230	7'4"
Vers.26	2130	7'
Vers.27	2025	6'8"
Vers.28	1910	6'3"



LC

B	mm	ft
Vers.22	3365	10'8"
Vers.23	3295	10'3"
Vers.24	3175	9'11"
Vers.25	3065	9'6"
Vers.26	2950	9'1"
Vers.27	2840	8'9"
Vers.28	2715	8'9"

** 26.5 S - 28.5 SP ** 188074

16/04/2013