

**PETTIBONE®**

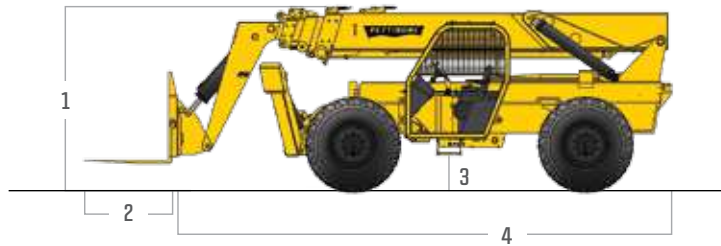
# » TRAVERSE T1157

SPECIFICATIONS



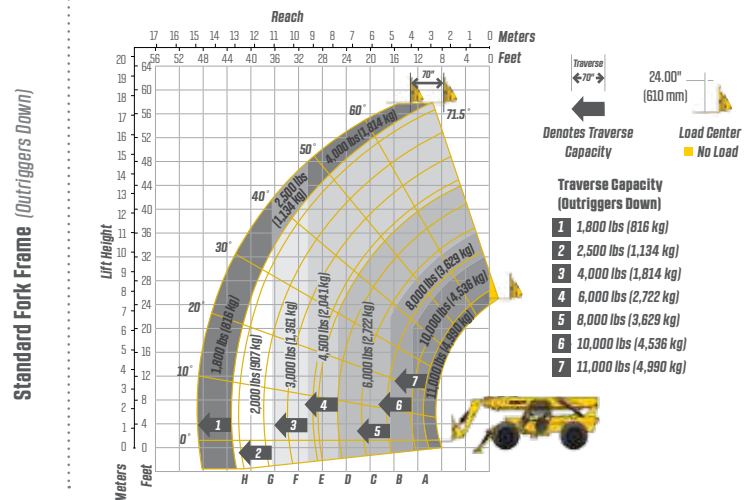
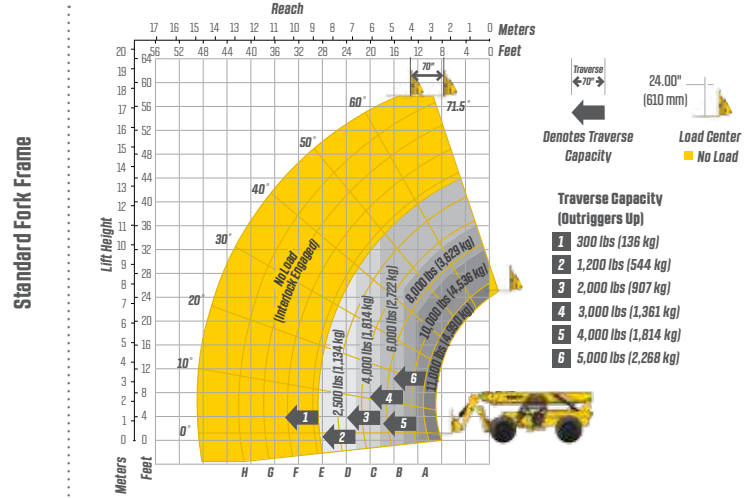
The Traverse™ T1157 from Pettibone® is ruggedly built and engineered to deliver results for the long haul. High lift capacity and reach, along with 70 inches of horizontal boom transfer, makes easy work of landing loads. The T1157 also offers exceptional operator visibility and superior maneuverability for enhanced efficiency. Responsive hydraulics ensure smooth operation for any job application.

# SPECIFICATIONS



DIMENSIONS	
1	<b>Height</b> 8' 4" (254 cm) boom down
2	<b>Fork Carriage</b> 48" (122 cm) standard
3	<b>Ground Clearance</b> 18.8" (48 cm)
4	<b>Length</b> 24' 5" (744 cm) to fork frame
	<b>Overall Width</b> 8' 6" (259 cm)
	<b>Pallet Forks</b> 2.25 x 4 x 48" standard
	<b>Total Operating Weight</b> 37,000 lbs (16,783 kg)
ENGINE	
	<b>Model/Power</b> 110 HP (82 kW) Cummins® Tier III turbo diesel with electronic control & protection
	<b>Fuel Tank</b> 32.6 gal. (123 L)
HYDRAULIC SYSTEM	
	<b>Features</b> Piston pump, auxiliary boom tip hydraulics, quick disconnect for attachments
PERFORMANCE	
	<b>Max Load Capacity</b> 11,000 lbs (4,990 kg)
	<b>Maximum Lift Height</b> 57' 6" (1,753 cm)
	<b>Maximum Forward Reach</b> 48' 9" (1,486 cm) at 24" LG
	<b>Below Grade Reach</b> 3' 11" (119 cm)
	<b>Maximum Travel Speed</b> 20 mph (32 km/h)
	<b>Turning Radius</b> 13' (396 cm)
	<b>Transfer</b> 5' 10" (178 cm) horizontal boom travel
	<b>Frame</b> 24° of leveling (12° right and left); rear axle stabilization system; mounted outriggers
	<b>Transmission</b> Fully modulated Carraro® Powershift, 4-speed forward & reverse; parking brake engaged transmission declutch
	<b>Axles</b> Carraro outboard planetary; 4-wheel drive
	<b>Steering</b> 4 wheel, 2 wheel, and crab steer
	<b>Brakes</b> Oil-immersed inboard disc service brakes, electronically actuated spring applied hydraulic release park brake
	<b>Tires</b> 14.00 x 24 16 ply
	<b>Boom</b> Automatic fork leveling without slave cylinders; 4 section roller boom

# LIFT PERFORMANCE



# FEATURES & OPTIONS

OPERATOR CAB	
Adjustable suspension seat with seat belt	Machine level indicator
Fully adjustable right-side armrest	Single multifunction hydraulic joystick
Cab step	ROPS/FOPS
AVAILABLE ATTACHMENTS	
Pallet, lumber and block forks	Truss boom
Side tilt carriages +/- 10°	Utility buckets
OPTIONS	
Light packages	Enclosed cab (HWD)
Foam-filled tires	

\* Specifications are subject to change.



**PETTIBONE, LLC**  
 1100 Superior Avenue  
 Baraga, MI 49908  
 P: 800.467.3884  
 info@gopettibone.com  
 www.gopettibone.com



<b>1 Year</b>	Full machine and attachment
<b>2 Years</b>	Powertrain and major hydraulic components
<b>3 Years</b>	Machine structure

# WARRANTY