

TRAVERSE T1258X

PETTIBONE

T1258X TRAVERSE

The Traverse™ T1258X is the farthest-reaching telehandler in the Pettibone® lineup. Featuring a unique traversing boom that moves loads by traveling horizontally, the Traverse provides up to 70 inches of horizontal boom transfer, allowing users to precisely place loads at full lift height without having to coordinate multiple boom functions.

X-SERIES



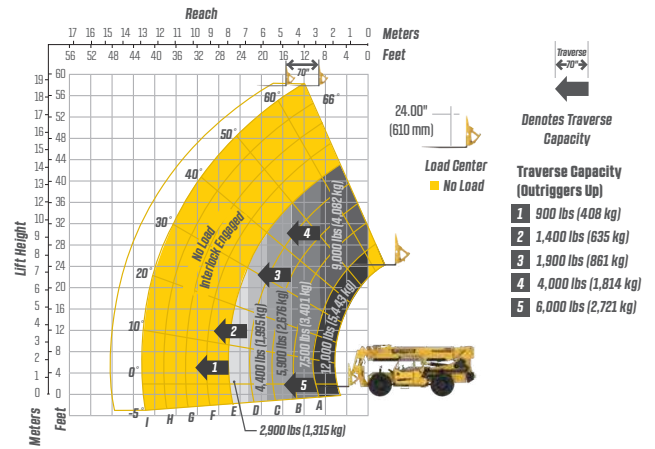
SPECIFICATIONS



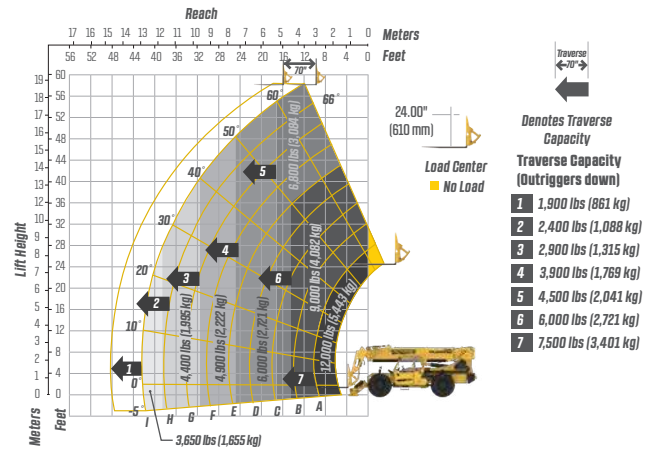
DIMENSIONS	
1 Overall Height	9' (274 cm) boom down
2 Fork Carriage	48" (122 cm) standard
3 Ground Clearance	19" (48 cm)
4 Overall Length	22' 11" (699 cm) to fork frame
Overall Width	8' 6" (259 cm)
Pallet Forks	2.25x4x48" standard
Approximate Operating Weight	32,500 lbs (14,742 kg) with outriggers
ENGINE	
Model/Power	117 HP (87 kW) Cummins® QSF3.8 Tier 4 turbo diesel with DEF and SCR aftertreatment
DEF Tank	5 gal. (19 L)
Fuel Tank	30 gal. (114 L)
HYDRAULICS	
System	Pressure comp, axial piston pump
Features	Fully proportional functions, auxiliary boom tip hydraulics, quick disconnect for attachments
Controls	Single joystick, pilot operated
PERFORMANCE	
Max Load Capacity	12,000 lbs (5,443 kg)
Maximum Lift Height	58' 6" (1,783 cm)
Landing Height	58' 6" (1,783 cm)
Maximum Forward Reach	47' 10" (1,458 cm) traversed 42' (1,280 cm) non-traversed
Below Grade Reach	3' 2" (97 cm)
Maximum Travel Speed	15.2 mph (24.5 km/h)
Turning Radius	14' 4" (437 cm)
Drawbar Pull (GVW)	31,800 lbs (14,424 kg)
Frame	20° of leveling (10° right and left), rear axle stabilization system
Transmission	Dana® VDT12000 Series, 3-speed Powershift, forward & reverse
Axles	Dana 223 Series: 4-wheel drive, 45% limited slip front differential
Steering	4 wheel, 2 wheel, and crab steer
Brakes	Oil-immersed inboard disc service brakes, integral front SAHR park brake
Tires	14.00 x 24, 16 ply, G2 tread air-fill standard
Boom	4-section, slide pad; automatic fork leveling without slave cylinder

LIFT PERFORMANCE

Standard Fork Frame (Outriggers Up)



Standard Fork Frame (Outriggers Down)



FEATURES & OPTIONS

OPERATOR CAB

Adjustable suspension seat with seat belt
Single multifunction hydraulic joystick
Analog/LCD gauge cluster

Split door design
Flat, bolt-in glass
Lockable storage area under seat

AVAILABLE ATTACHMENTS

Pallet, lumber or block forks
Utility bucket
Side tilt carriage (+/- 10°)
Truss boom

Standard carriage
Side-swing carriage (+/- 60°)
Hydraulic fork positioning carriage
10' tower w/ standard carriage

OPTIONS

Premium gauge cluster w/7" digital display
Rear-view camera system
High output LED lighting package
Solid or foam filled tires
Various tire tread options available

Enclosed cab, HWD (A/C available)
Sling hook
Electrical to boom tip
Bolt-on rear pintle hitch

* Specifications are subject to change.

PETTIBONE

PETTIBONE, LLC

1100 Superior Avenue
Baraga, MI 49908

P: 800.467.3884
info@gopettibone.com
www.gopettibone.com

**1-2-3
WARRANTY**

1 Year

Full machine and attachment

2 Years

Powertrain and major hydraulic components

3 Years

Machine structure

WARRANTY